

# FRANCESCA LEIBOWITZ

---

MASTERARBEIT  
THEMA C: RE-USE CIBA

---

FRÜHLING 2020

---

GASTDOZENTUR ROGER BOLTSHAUSER  
DEPARTEMENT ARCHITEKTUR

---

ETH ZÜRICH

# FRANCESCA LEIBOWITZ

## MASTERARBEIT FS20

THEMA C  
«RE-USE CIBA»

### INSIDE OUT; CONNECTION, INVERSION, ACTIVATION

A non-descript, large floorplate, labyrinthine laboratory building has been re-purposed as part of the www of the new Klybeck district. The building has been de-constructed and re-constructed, keeping enough of the original to remind us of its origins, but changing its character to suit its new function.

It is also intended that the building should now act as a link between the Rhein and this new neighbourhood, via a wide internal street that will draw people from the riverbank, through the heart of the building, a voluminous market hall, to the new 'town square'.

The heavy cores of the existing building have been removed, and a light-weight timber structure added, a counterpoint to the remaining concrete wings. In this way the building is given new life and spaces are activated through a variety of interlinked uses.

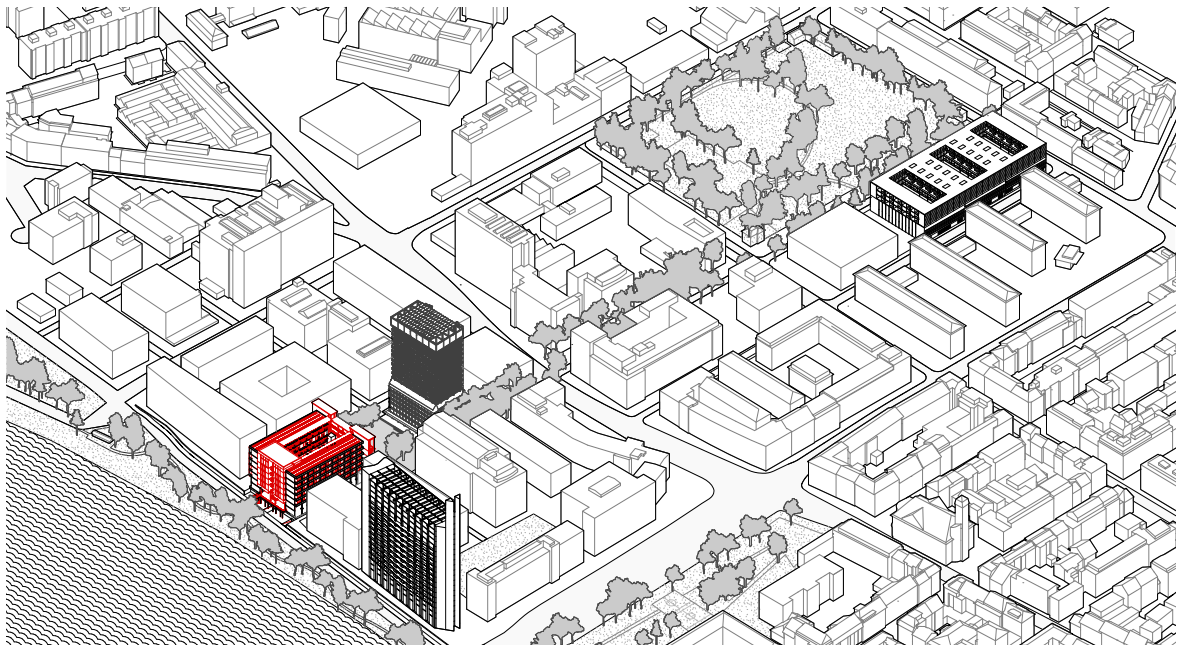
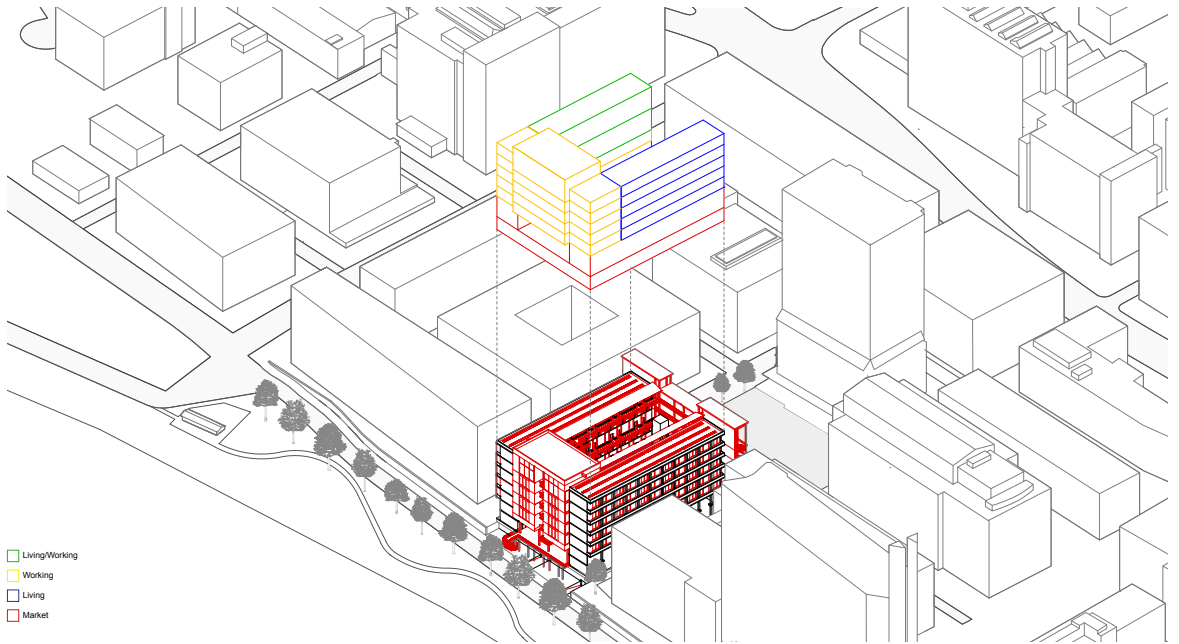
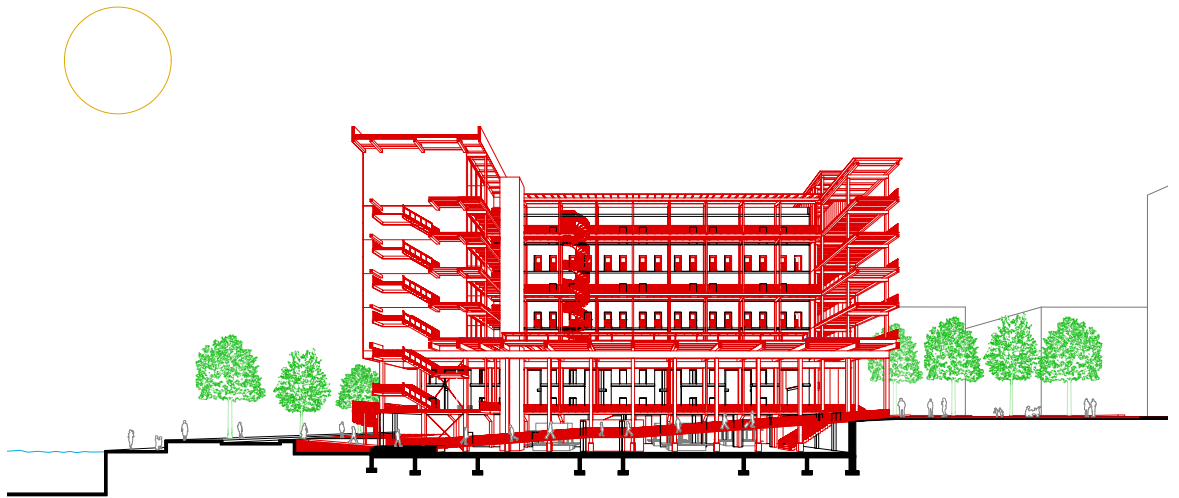
The timber infill provides the building's circulation system. While these external access ways are reminiscent of the previous intricate corridor system, they now expose, rather than conceal, activities and movement in the building, and make visible the new use of its structure. The original, blue glass facades are recycled as a terrazzo floor for the raised internal courtyard.

The busiest public space is the market hall on the lower floors, an accessible, permeable space to move through and around, where one meets for pleasure and commerce. The upper floors enclose a central courtyard, another public hub intended mainly for the building's occupiers: those living and working in the building, and their visitors.

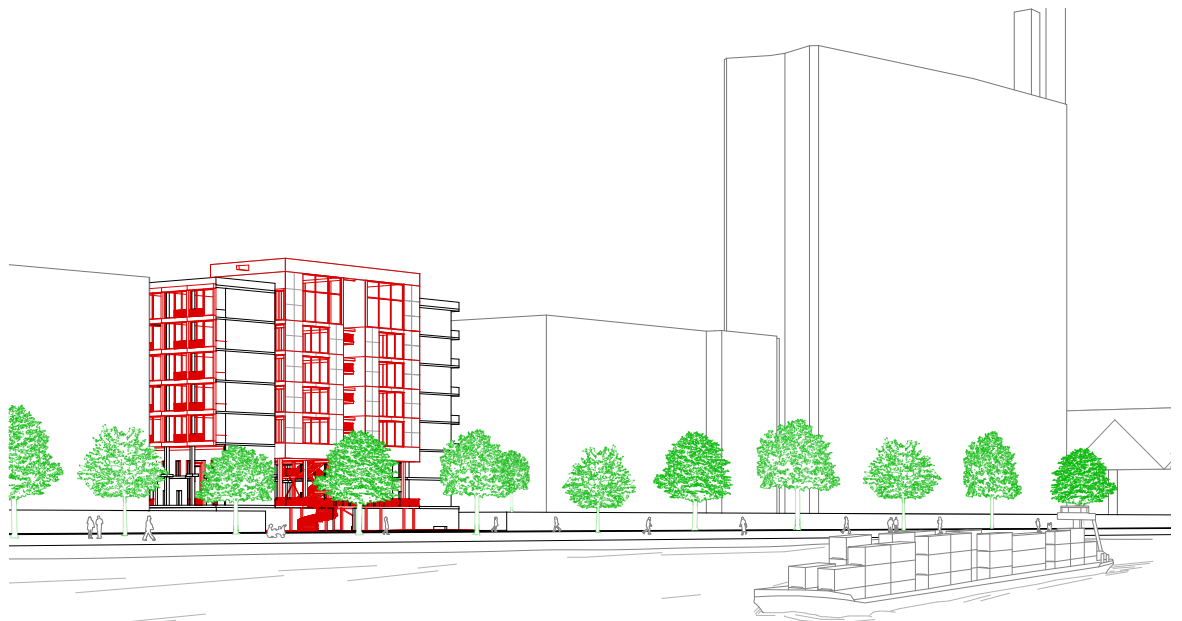
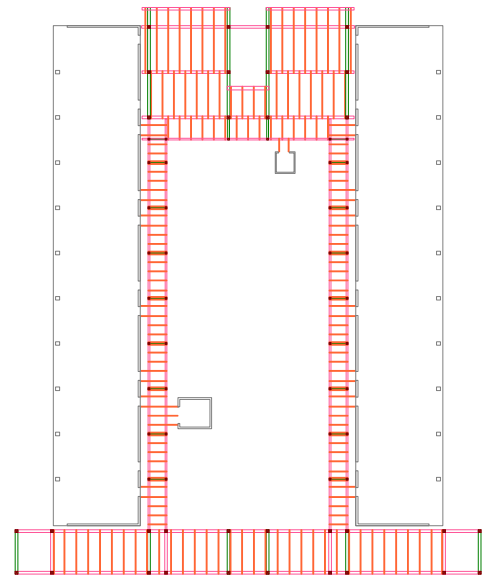
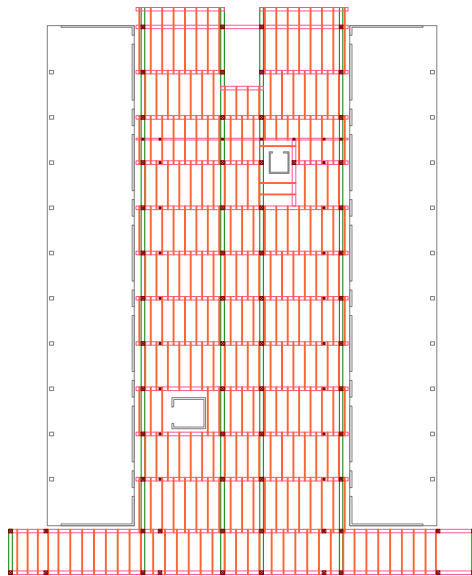
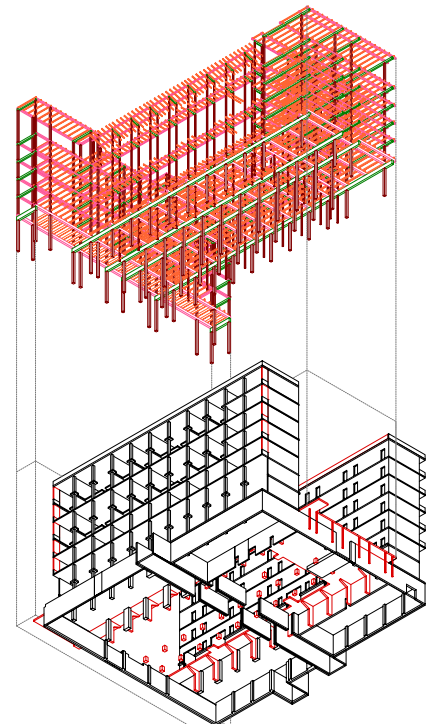
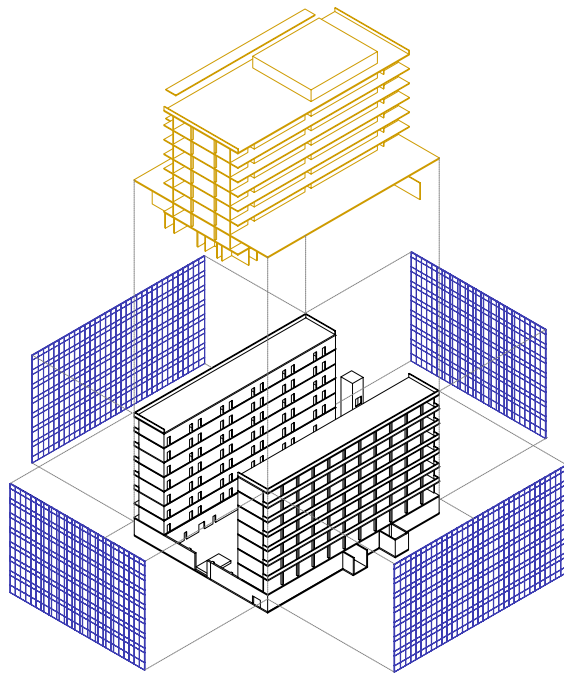
On one side, facing east, an open gallery looks on to the new town square, providing a relationship between the building and its neighbours. The external corridors within the building also allow for interaction - streets in the sky - while at the same time performing as viewing platforms for observing the building's many activities.

The residential units are located in the existing structure, replacing the old laboratories. The generous floor to ceiling heights offer lofty and spacious studios and two-bedroom apartments, some with double-height space. The offices and events areas are found in the west wing of the building, in a new addition that protrudes beyond the existing structure, with large openings providing views across the Rhein.

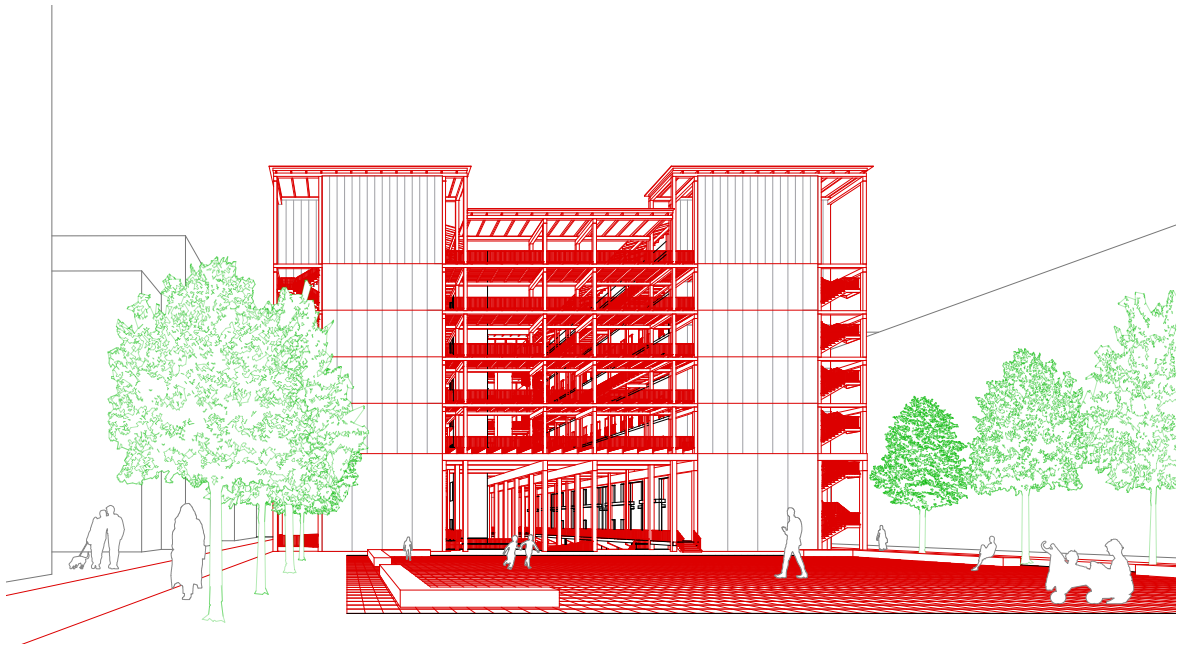
Once an impenetrable and somewhat monolithic urban block, the proposed reconfigured building will now attract many more users and passers-by; it will be transparent yet retain memories of what came before. Most importantly, it will connect activities and movements within Klybeck, and between it and the rest of the city.

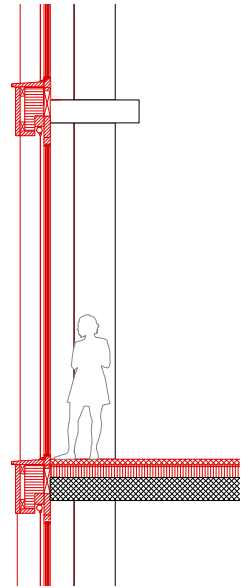
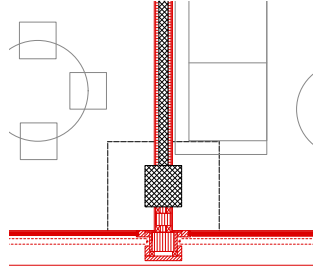
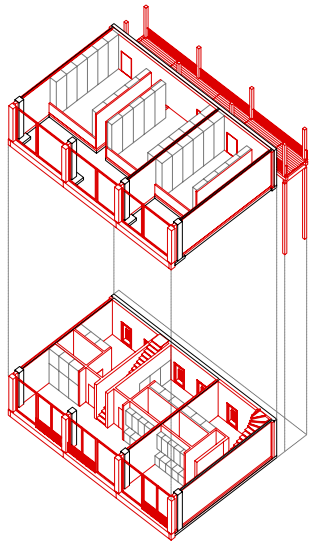




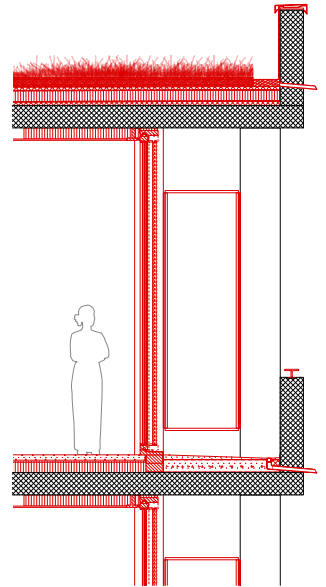
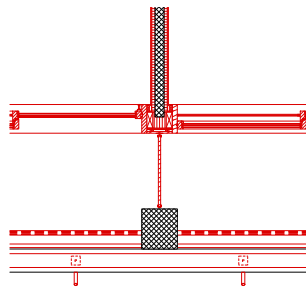
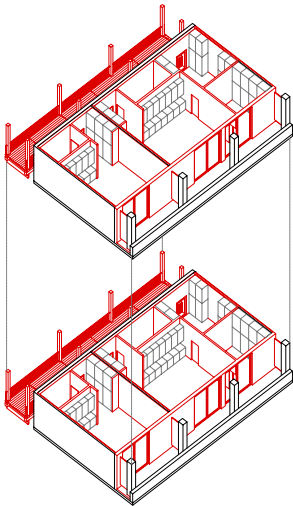




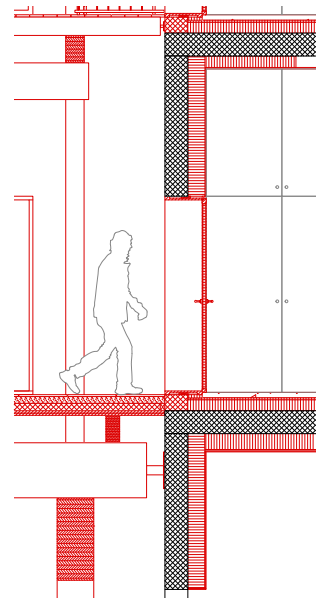
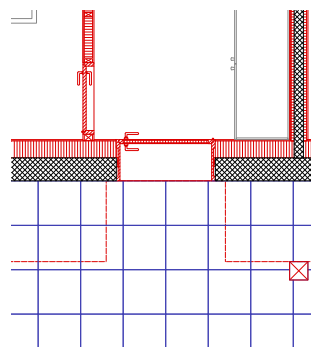
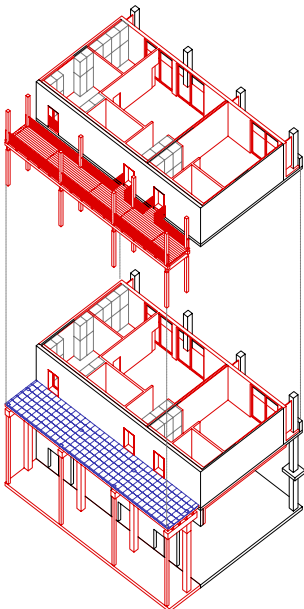




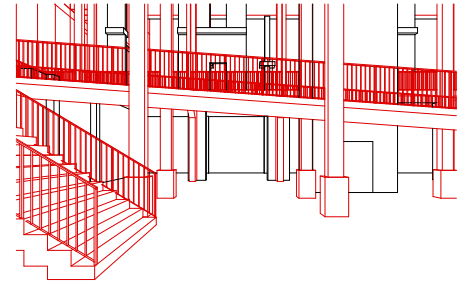
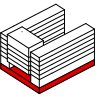
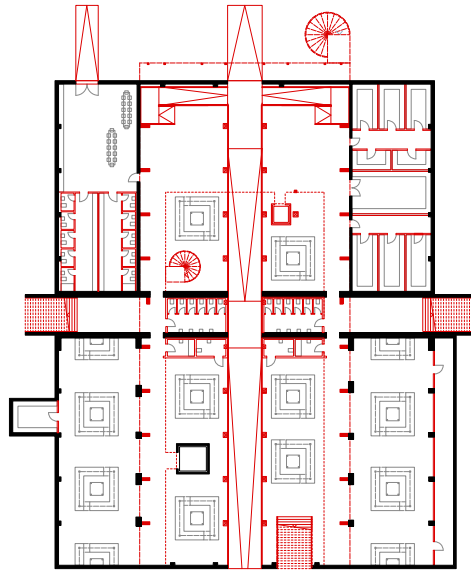
L: North Wing Axonometric View of Apartments / R: Facade Detail



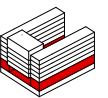
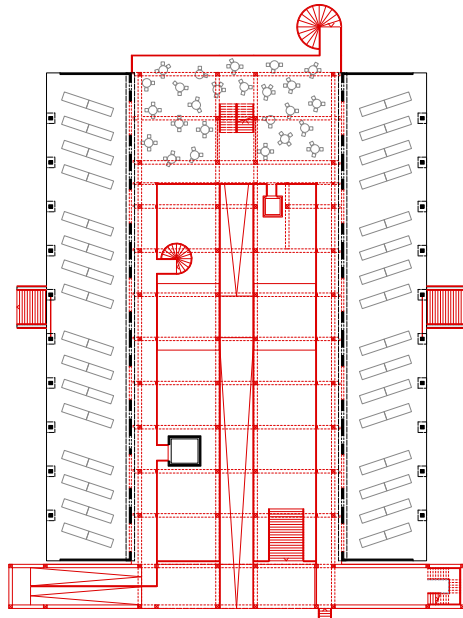
L: South Wing Axonometric View of Apartments / R: Balcony Facade Detail



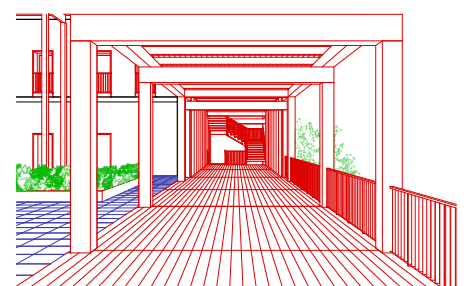
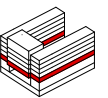
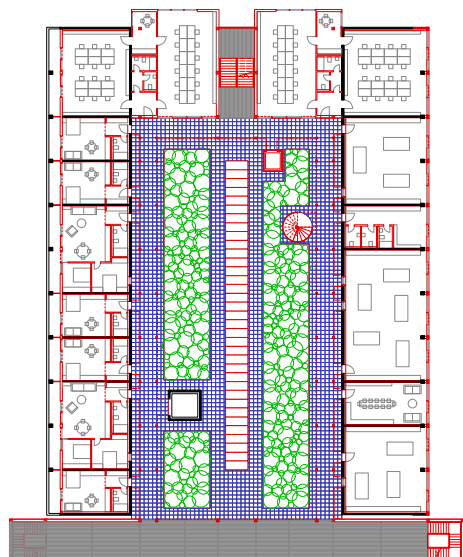
L: South Wing Axonometric View of Terrace / R: Terrace Facade Detail



Lower Ground Floor

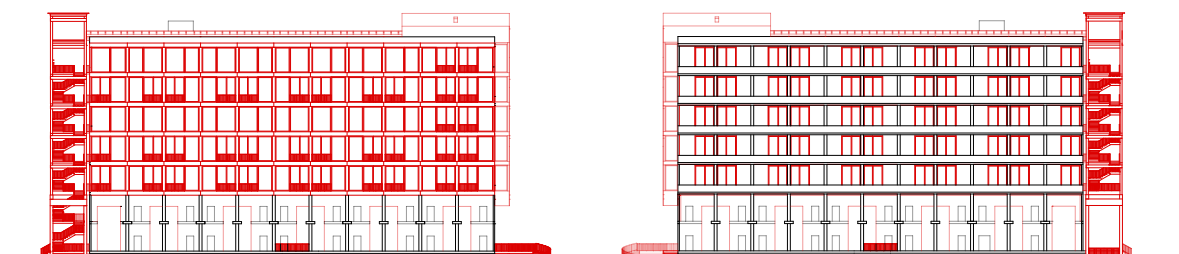
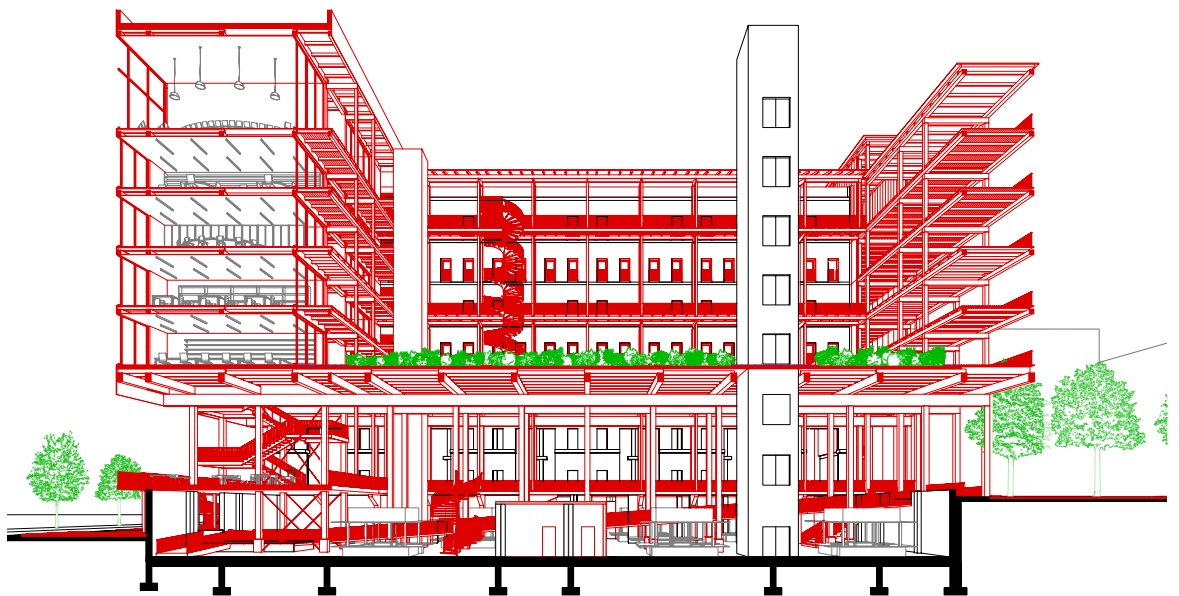
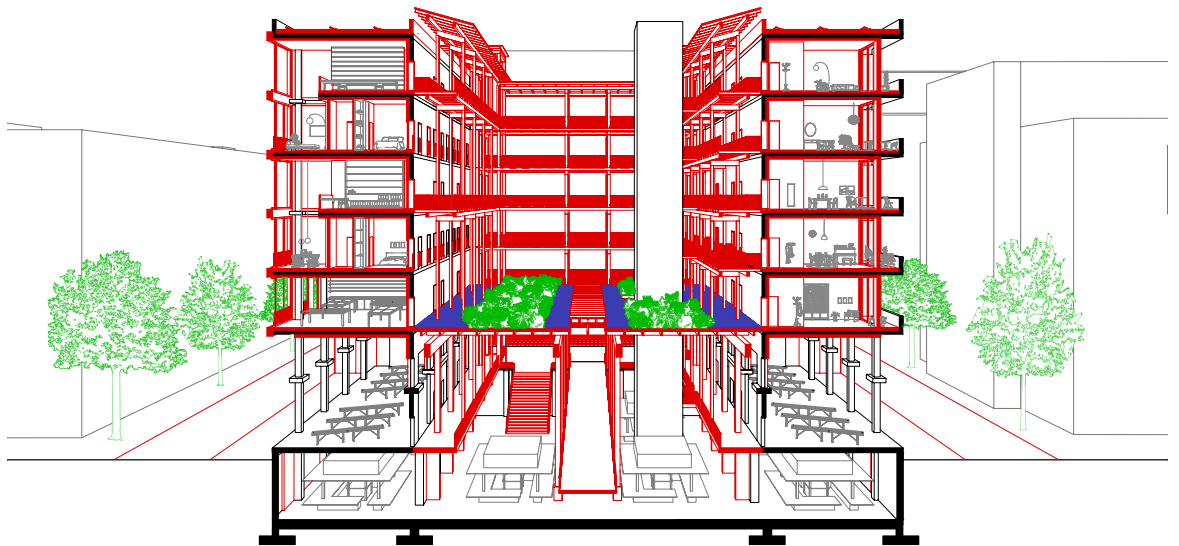


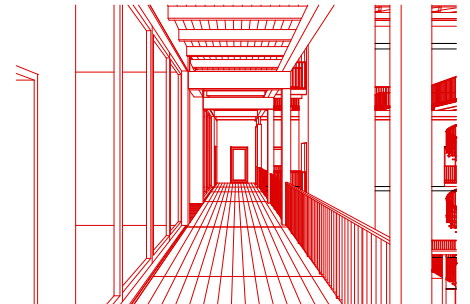
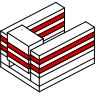
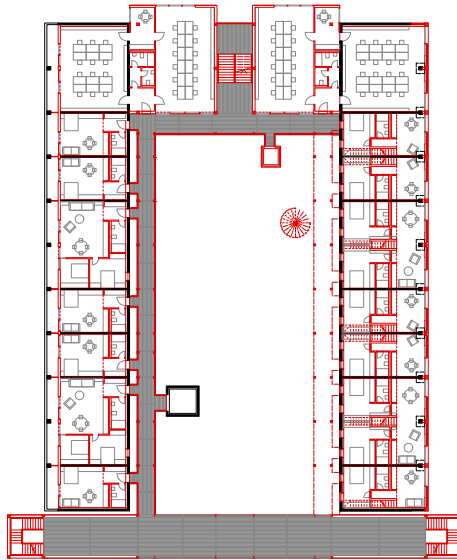
Ground Floor



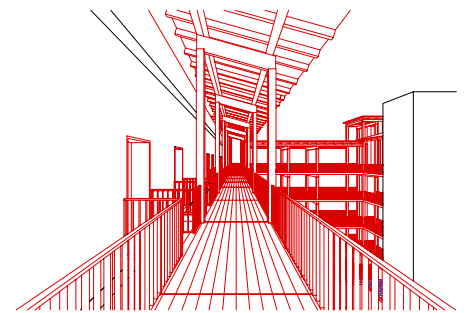
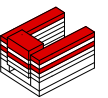
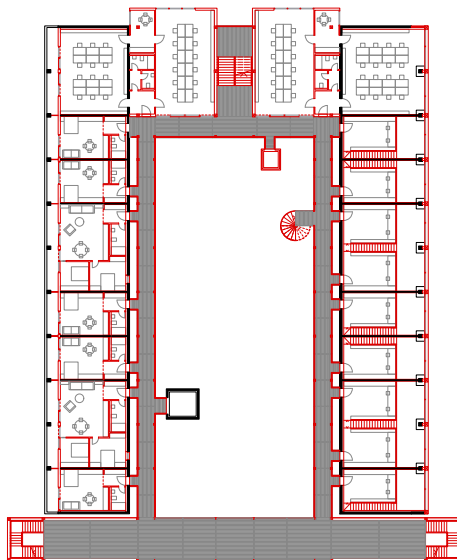
Second Floor







Third and Fifth Floor



Fourth and Sixth Floor

