



Master thesis theme A

FS 2021

Lorain Bernasconi

Chair Jan de Vylder



ALTERNATIVE DEVELOPMENT

The Gutstrasse is object to a recent masterplan by Peter Märkli Architekten, foreseeing the demolition of the existing after-war emergency housings ('Not-Siedlungen') built by Karl Egender and Wilhelm Müller between 1949 and 1955. The replacement buildings aim for a greater density (up to nearly three times the actual), diversity in terms of private and public uses, and more comfort for the inhabitants, notably by proposing modern apartments instead of the existing ones, among others.



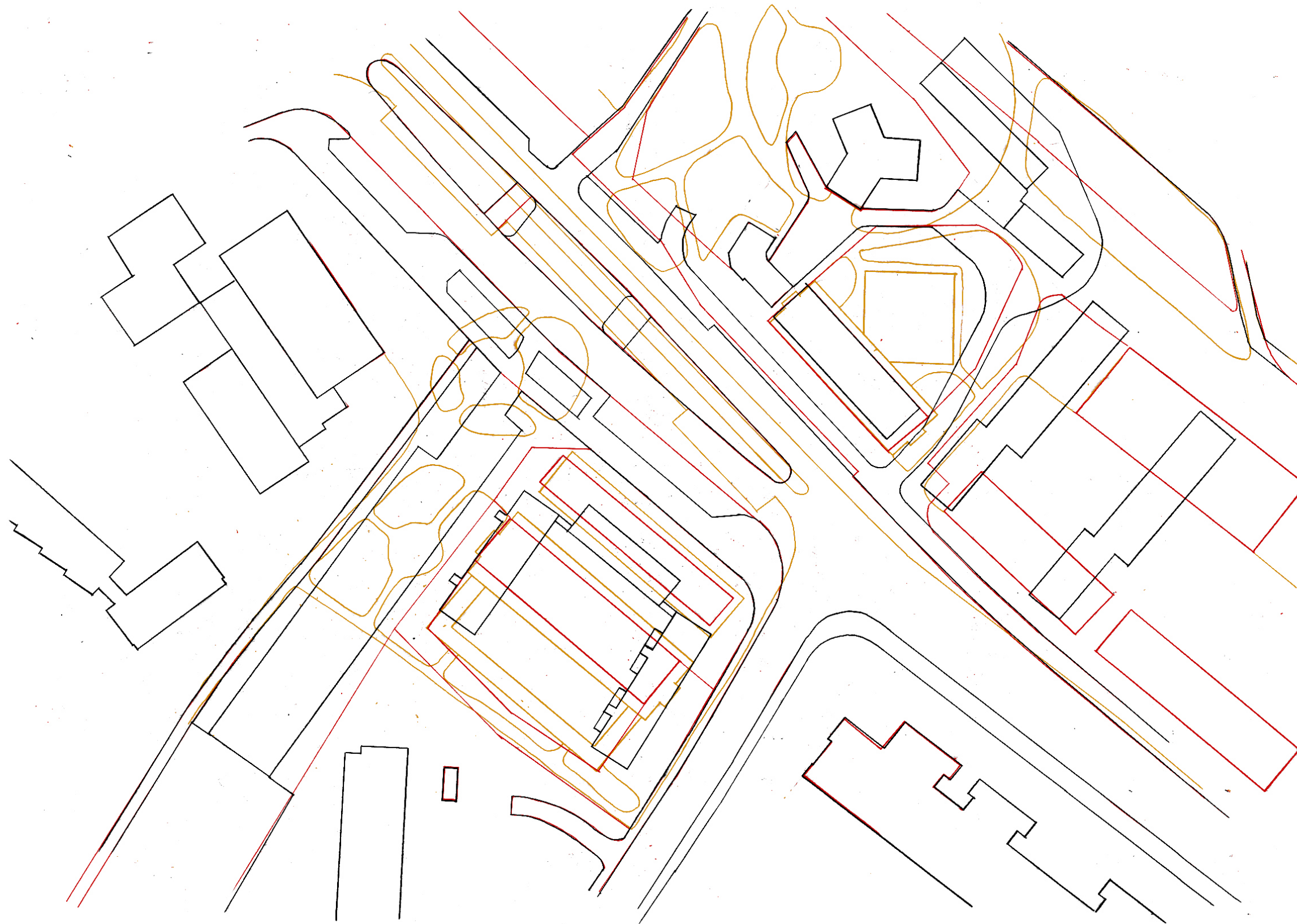
ALTERNATIVE DEVELOPMENT

The project investigates the parcel at the crossing of the Gutstrasse and the Triemlifussweg as a case study for the adaptation of the existing instead of its demolition.



EXISTING

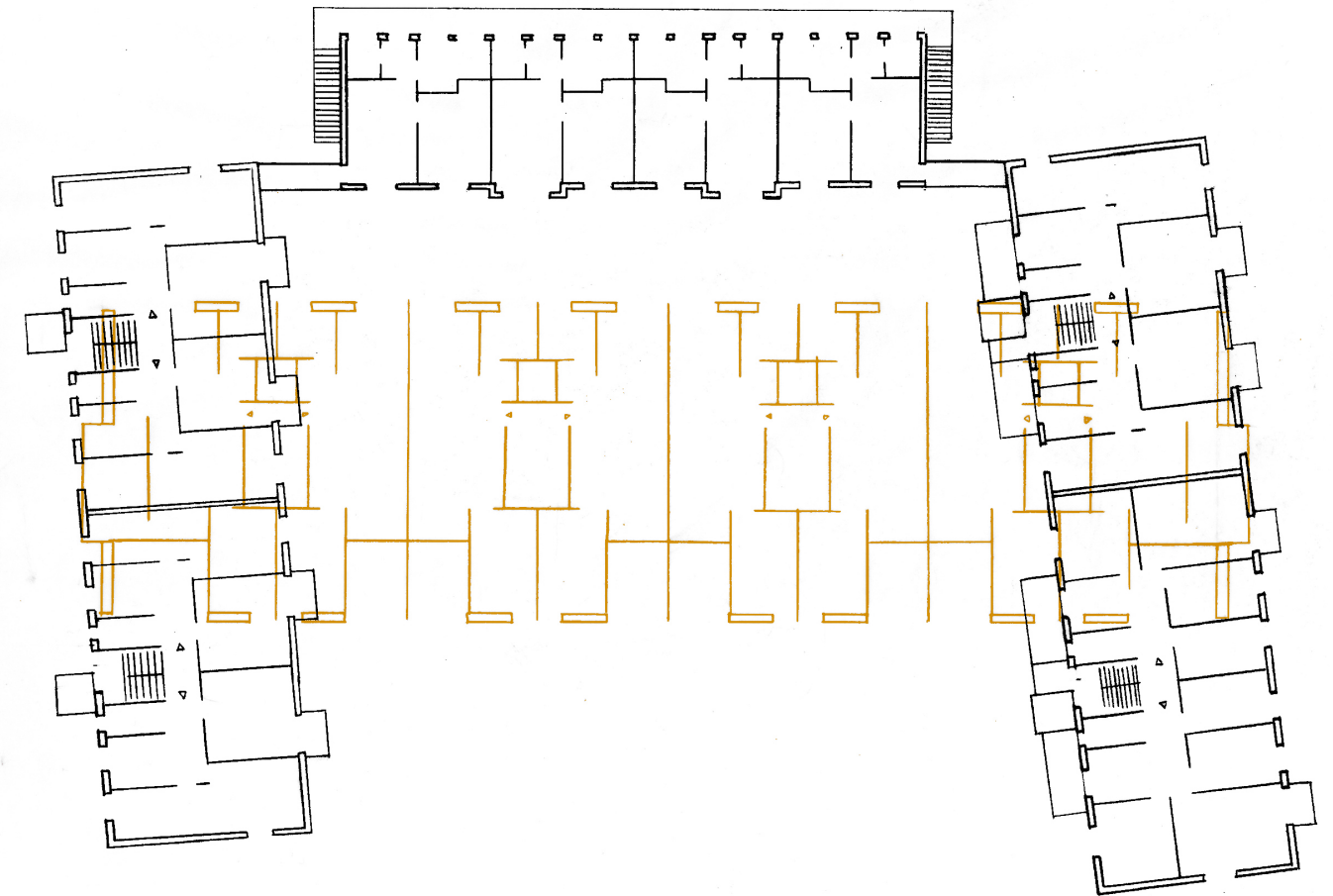
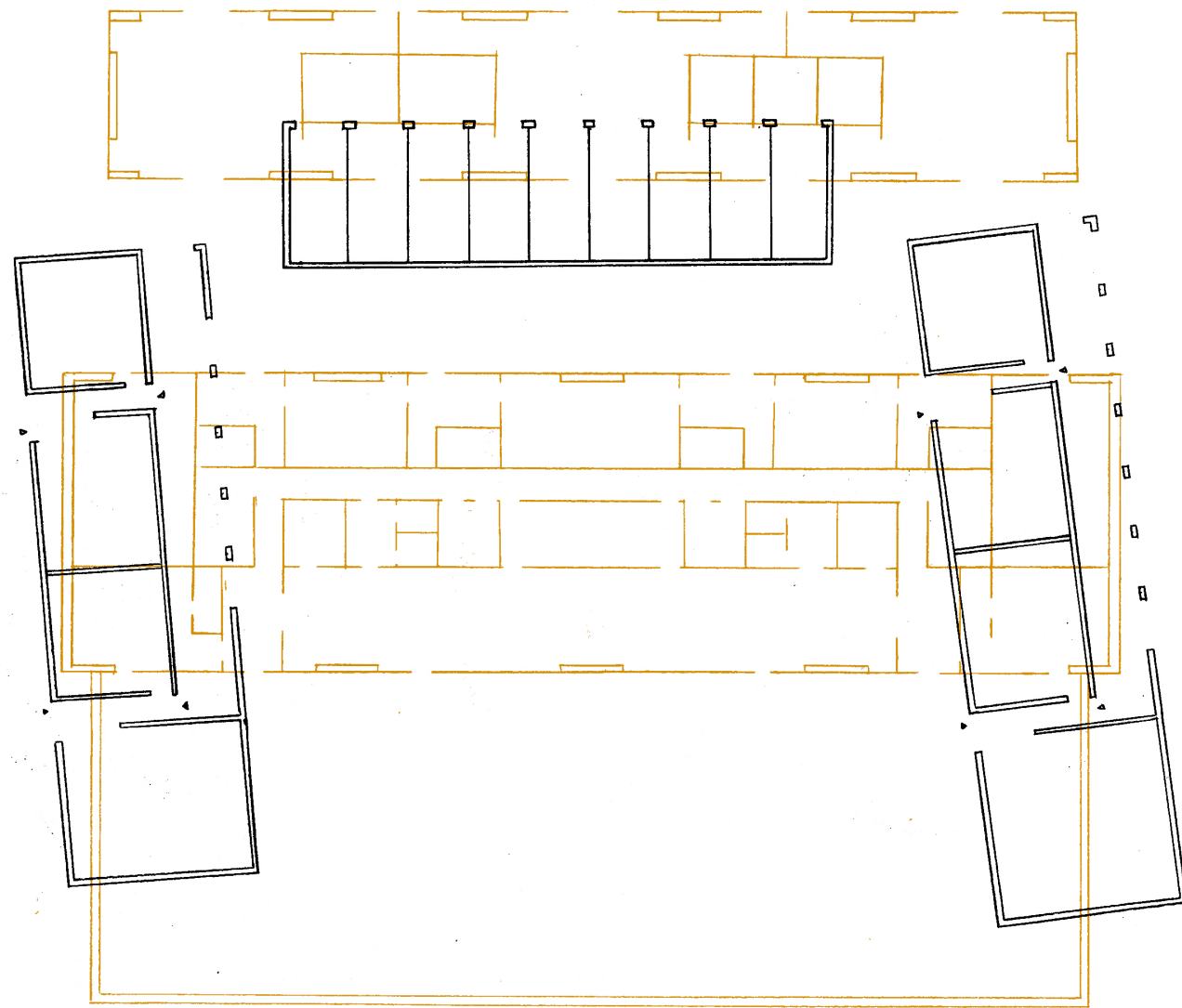
The days of the existing houses on the investigated parcel are now counted. A competition has been won for their replacement with bigger housing buildings. The winning project by ARGE Lütjens Padmanabhan Architekten and Caruso St John architects, 'Gilbert & George' sets the objectives for the intervention and serves as inspiration for its design.



OVERLAY

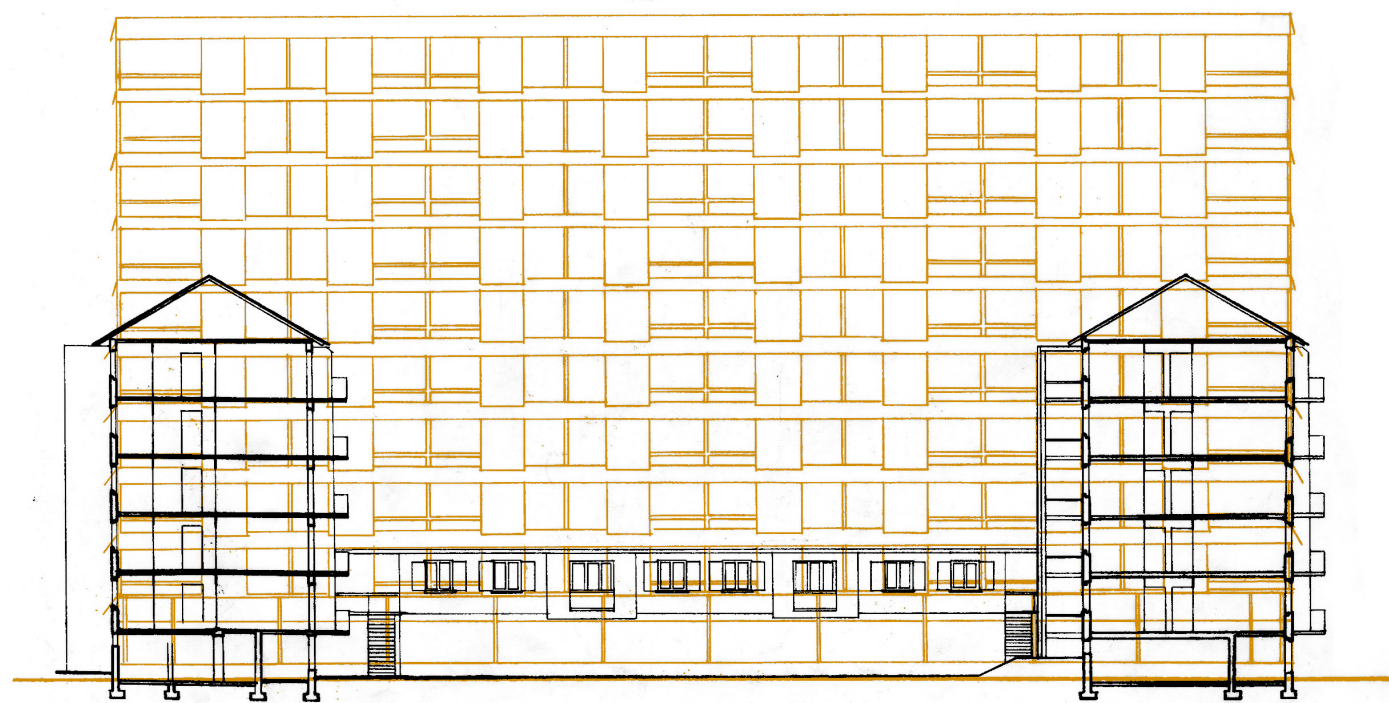
The proposal consists in the overlay of drawn possibilities for these houses.

Overlay with 'Gilbert & George' (orange) and Peter märkli's masterplan for the Gutstrasse (red)



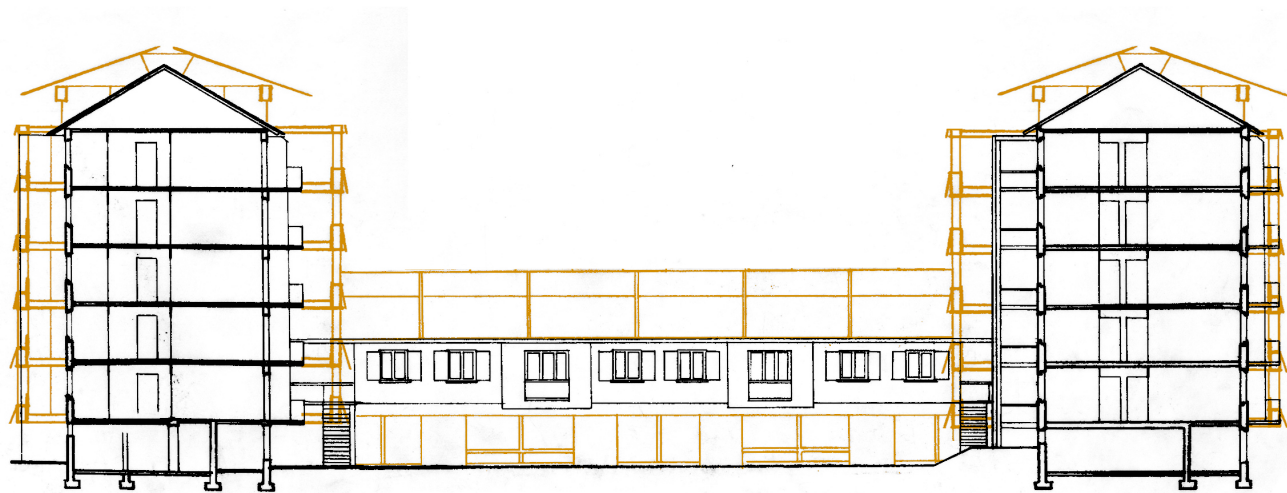
OVERLAY

Overlay with 'Gilbert & George' ground and first floors



OVERLAY

Overlay with 'Gilbert & George' sections



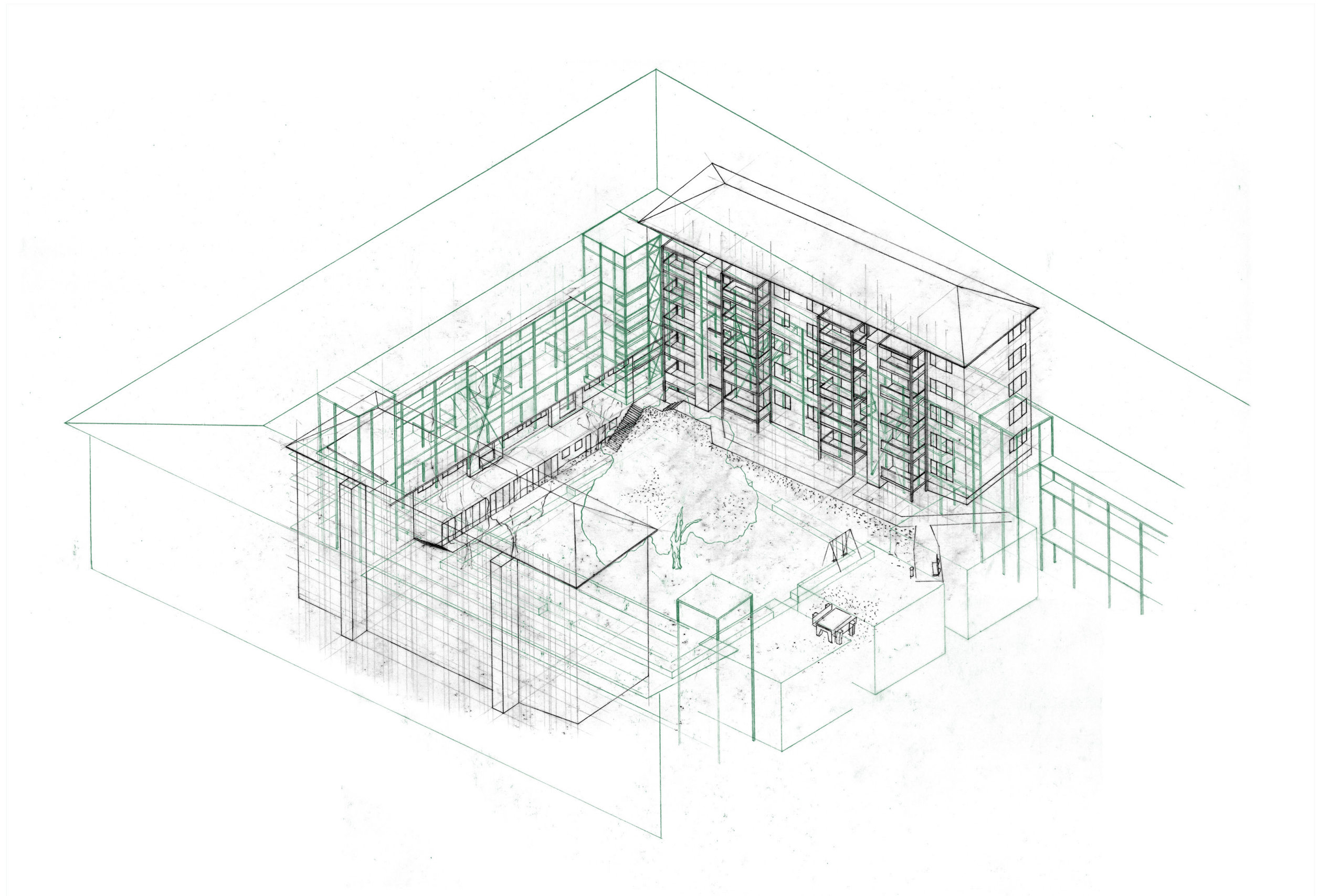
OVERLAY

Overlay with 'Gilbert & George' sections



OVERLAY

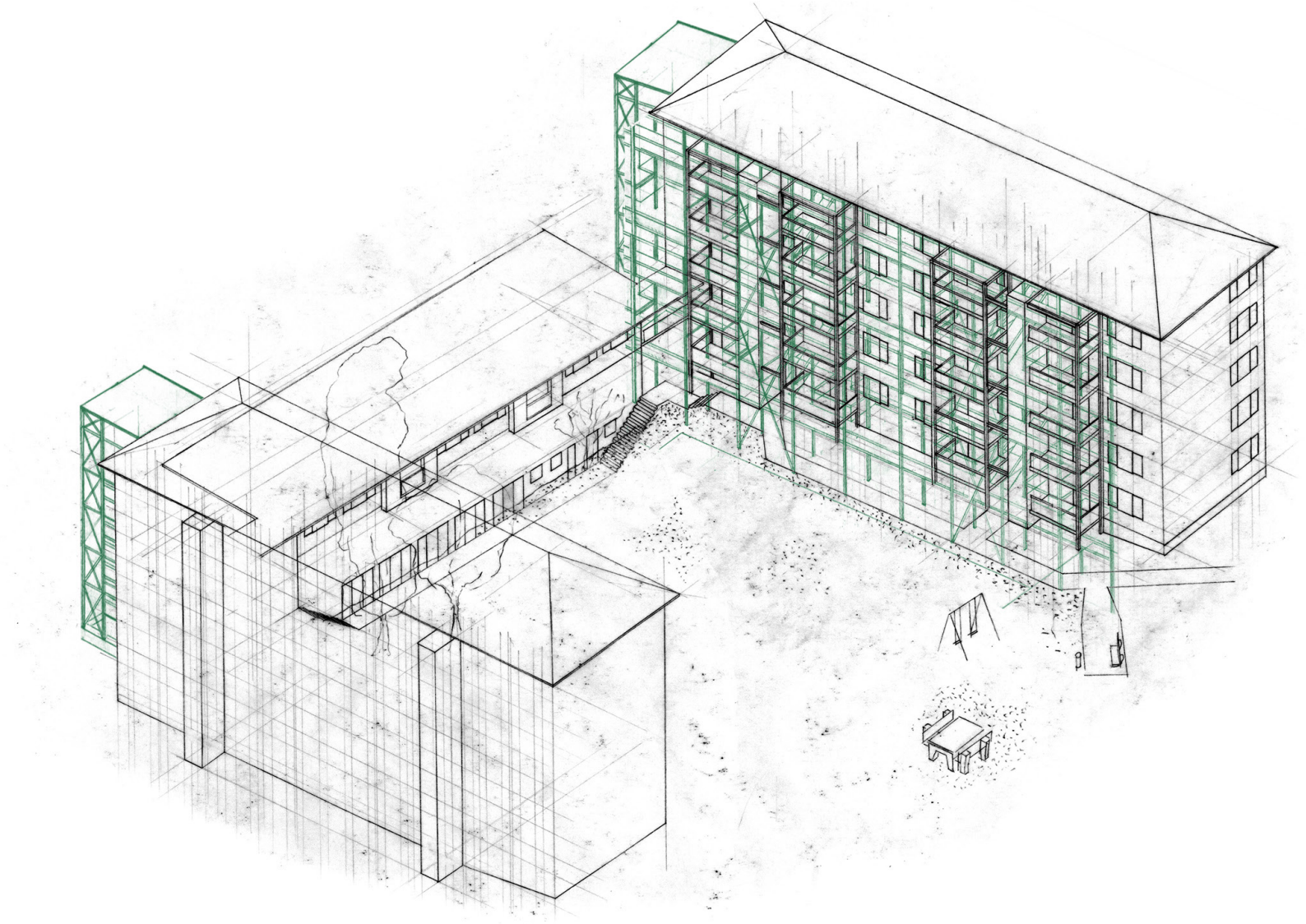
Overlay with 'Gilbert & George'



OVERLAY

The Brahmschhof building is used as a reference for its circulation consisting of stairs and lift towers at the angles of the courtyard and wide galleries.

Overlay with Brahmschhof



OVERLAY

Overlay with Brahmschhof



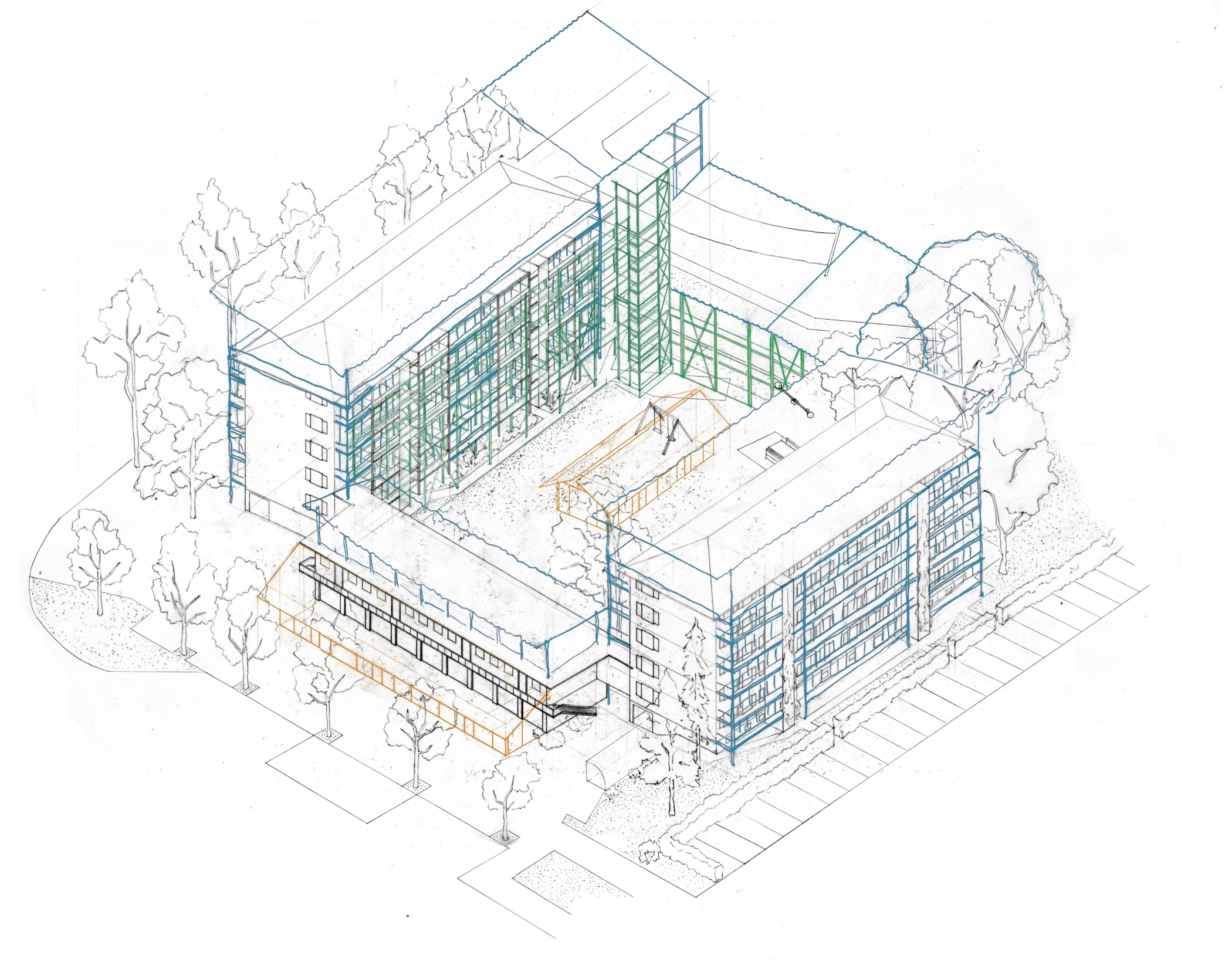
OVERLAY

Overlay with 'Gilbert & George'



OVERLAY

Overlay with 'Gilbert & George' and Brahmshof



OVERLAY

Overlay of Gilbert & Georges, Brahmshof and other possibilities



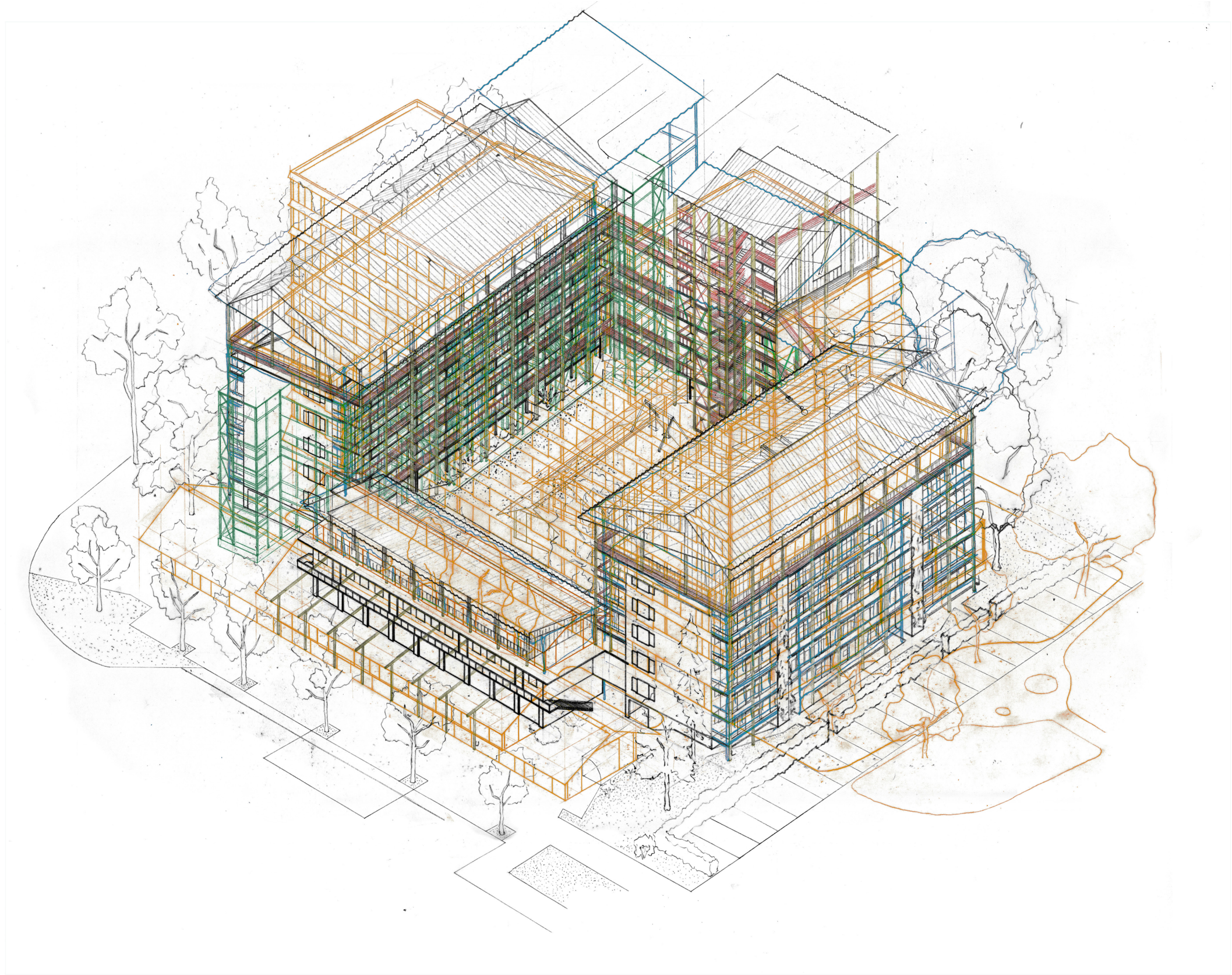
OVERLAY

Overlay of other possibilities



OVERLAY

Overlay of other possibilities



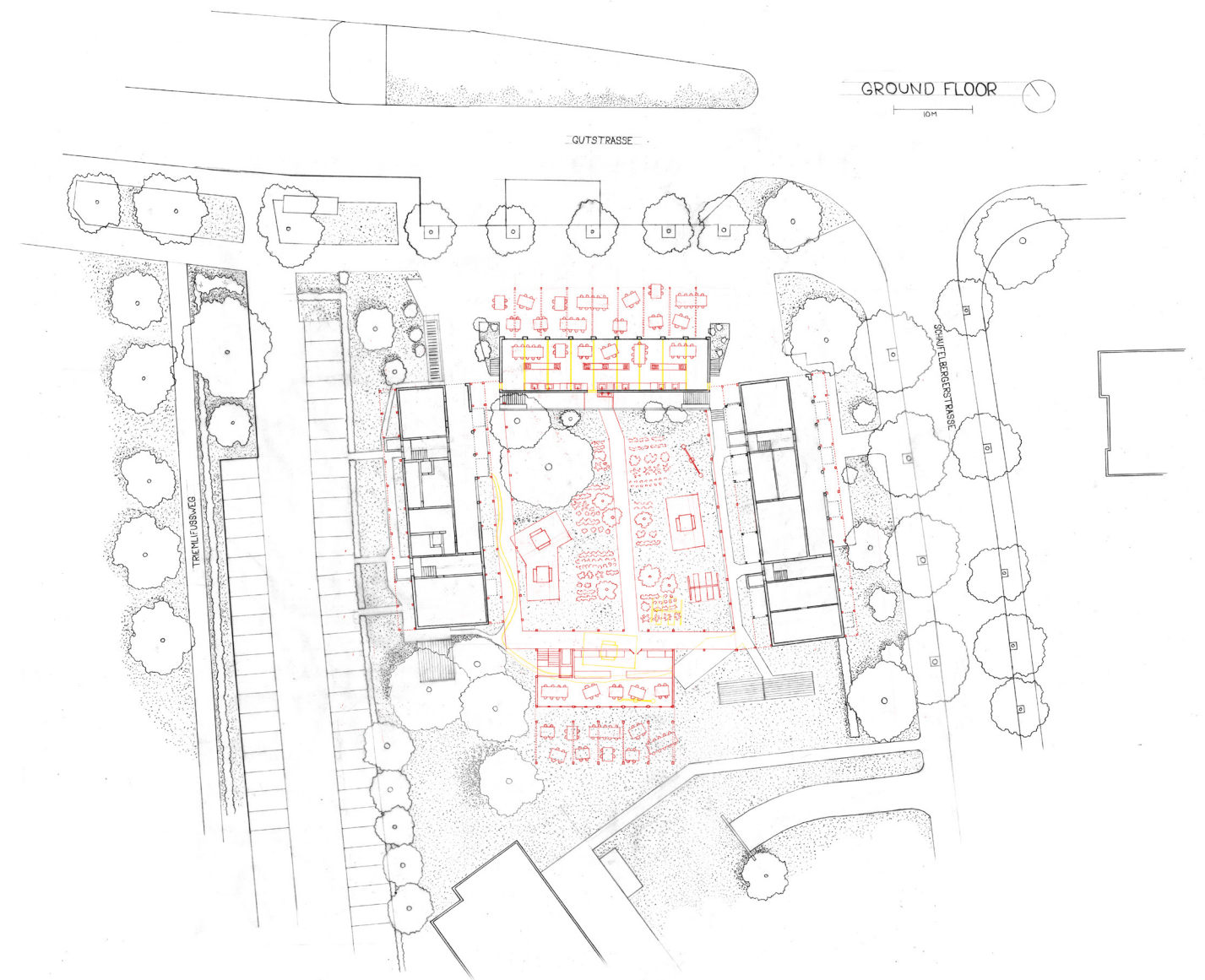
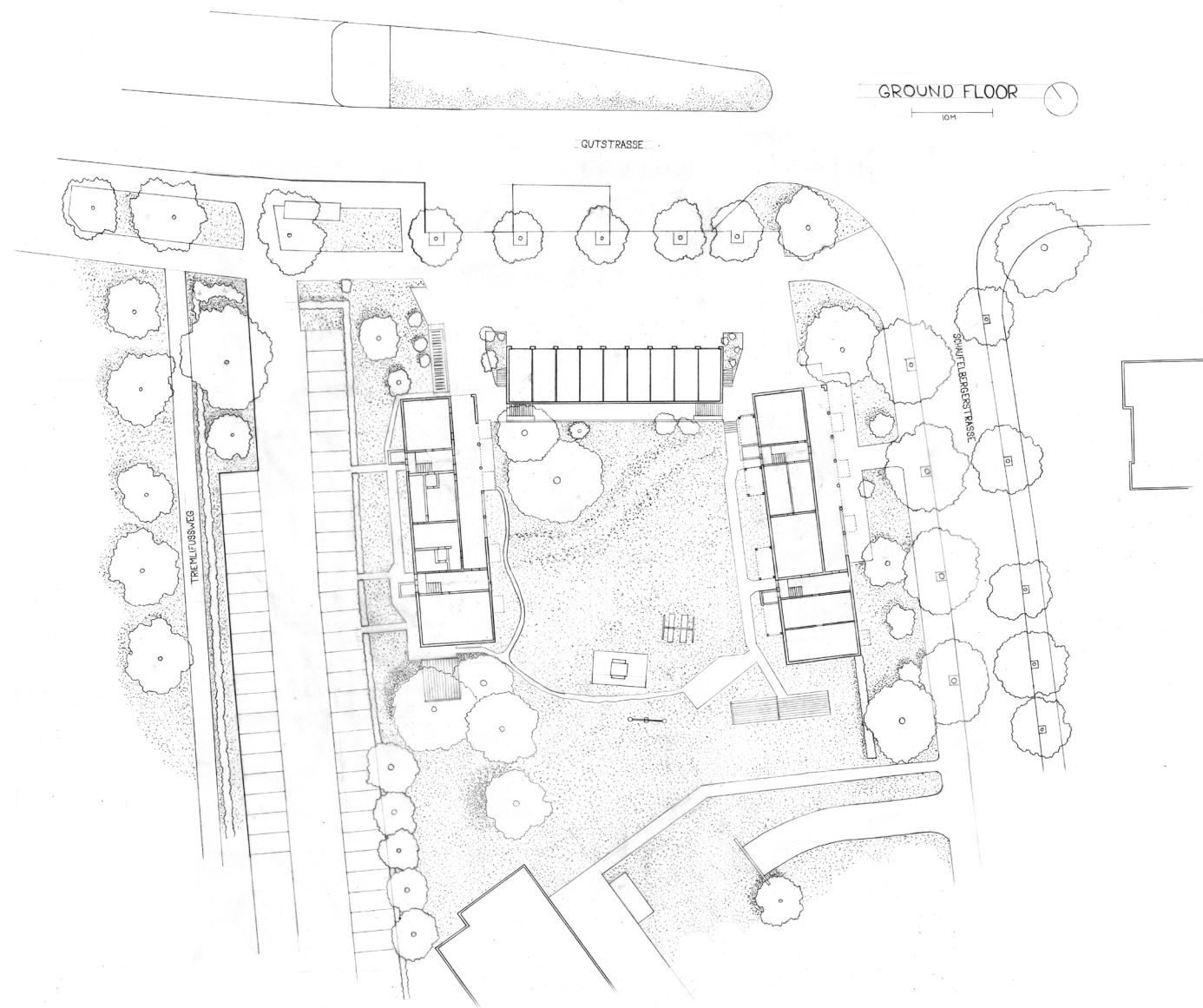
OVERLAY

Overlay of multiple possibilities



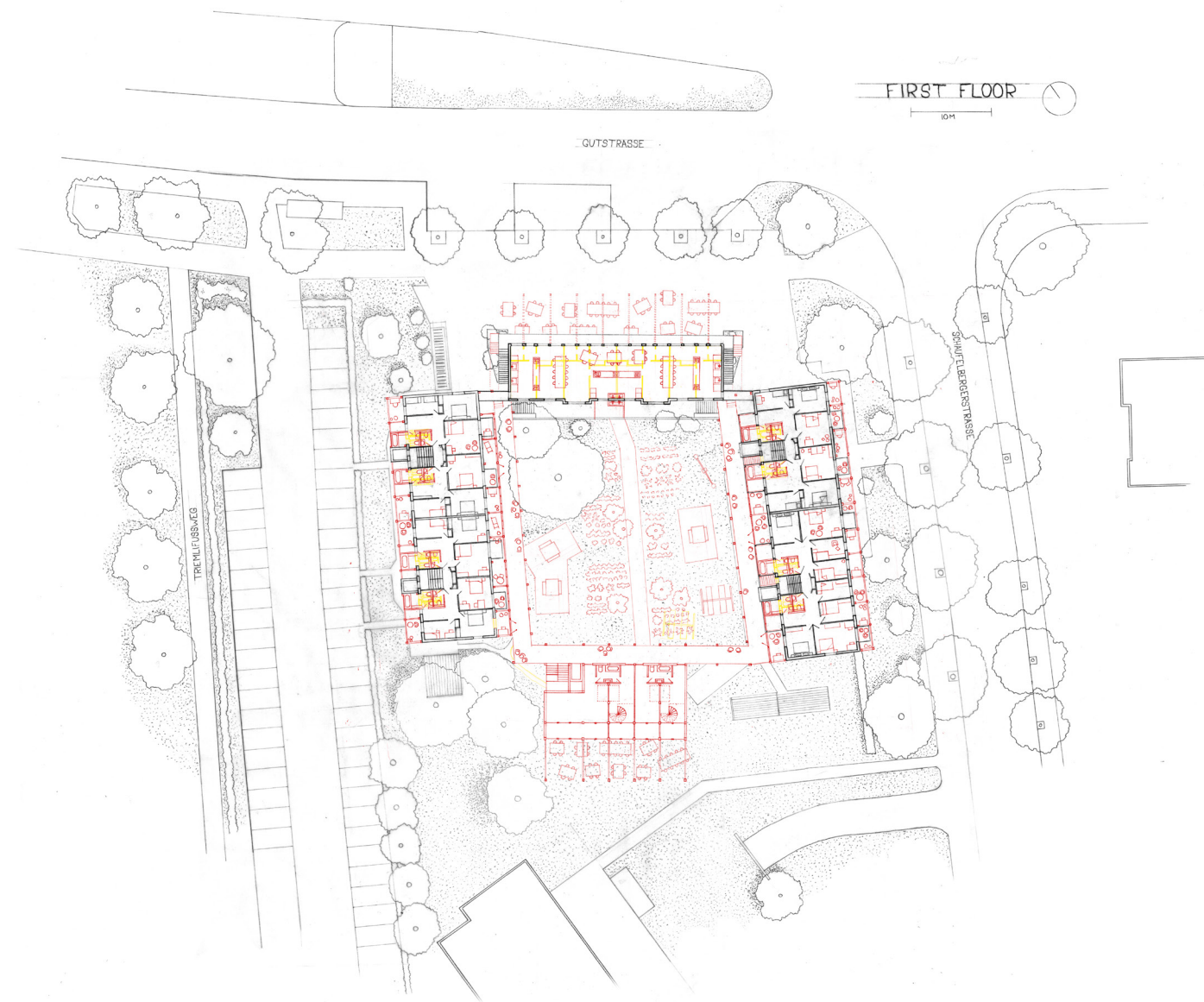
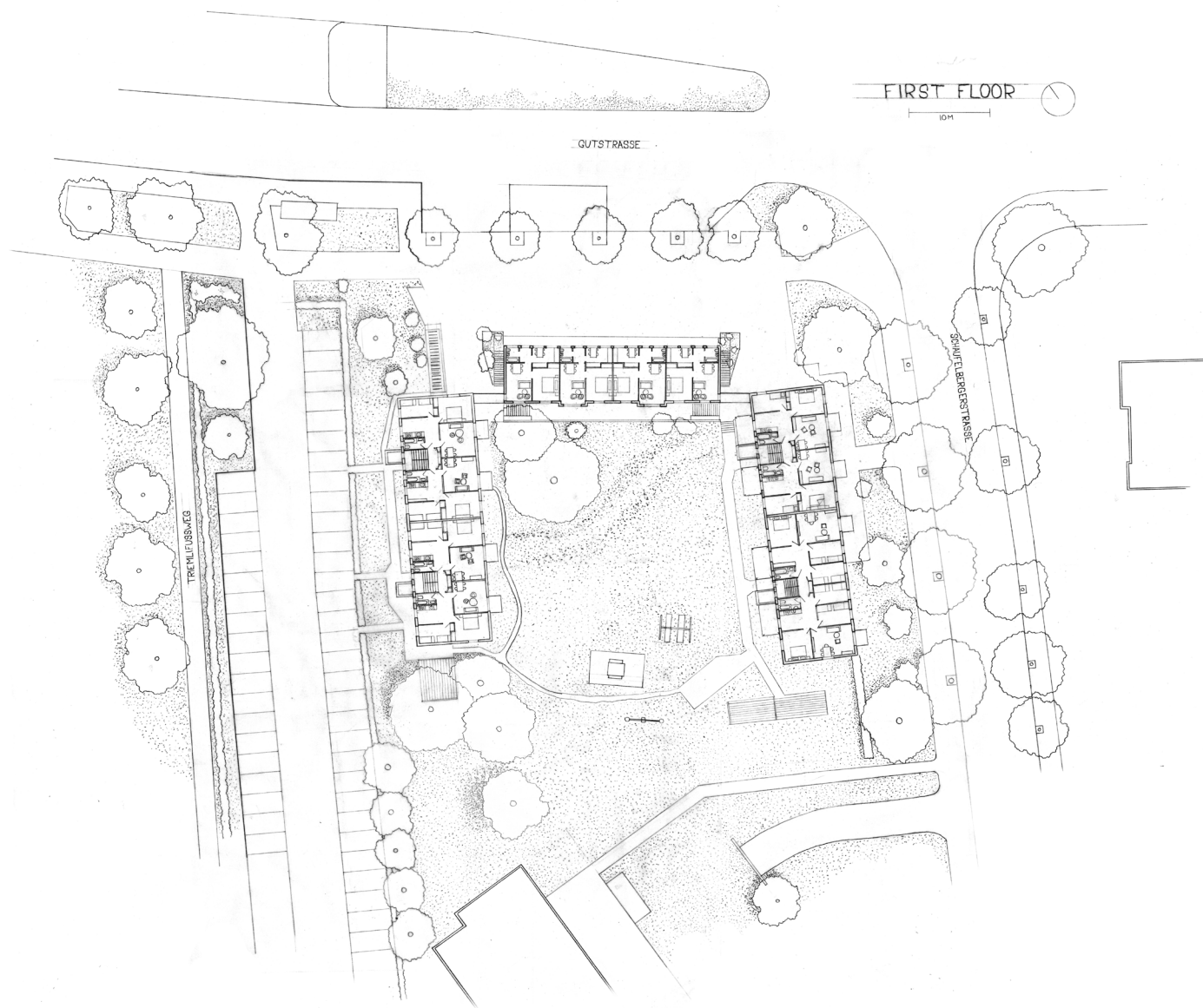
OVERLAY

The overlays eventually lead to the proposition of a wooden scaffolding built around and on the existing, as well as a new building enclosing the courtyard.

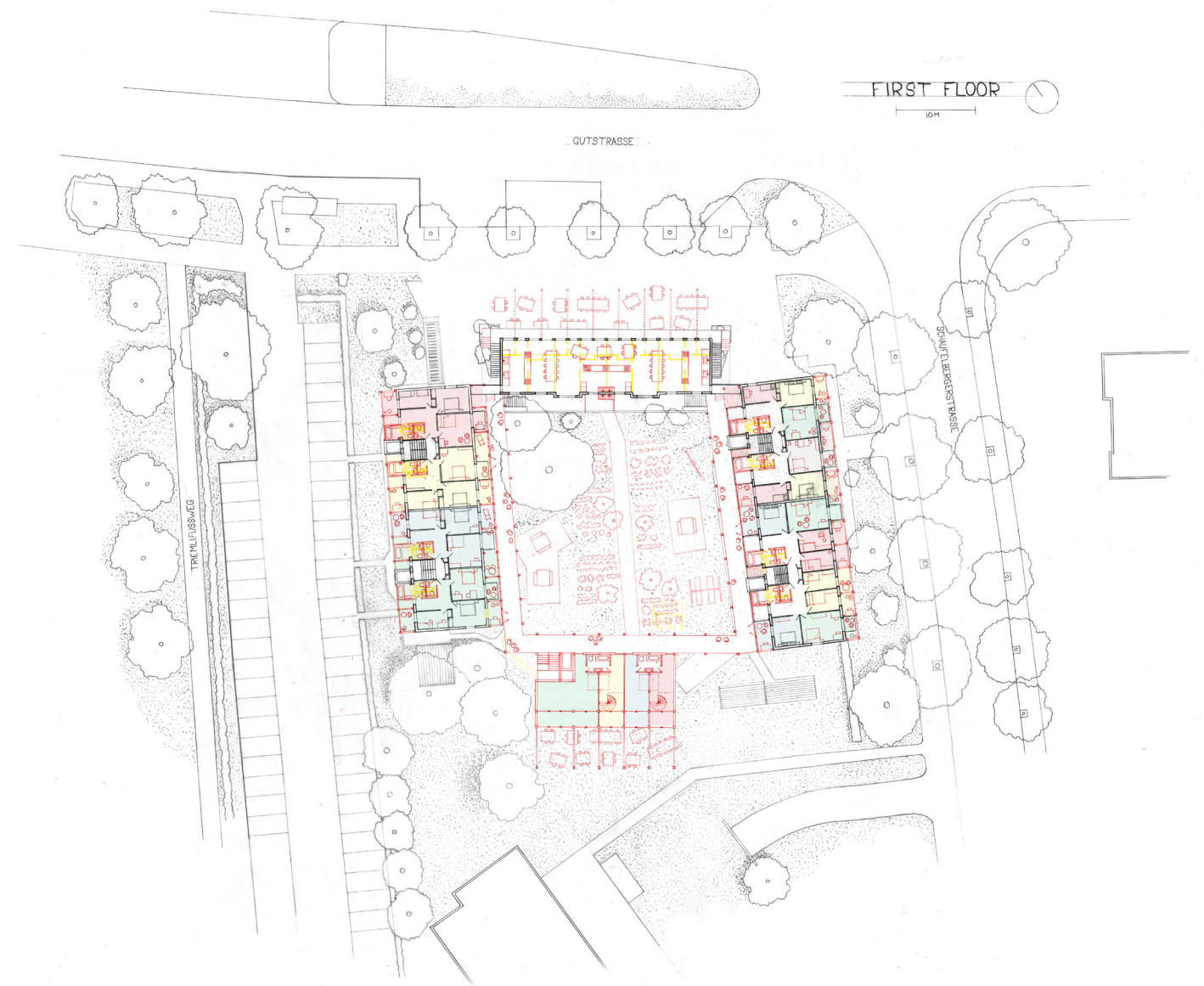
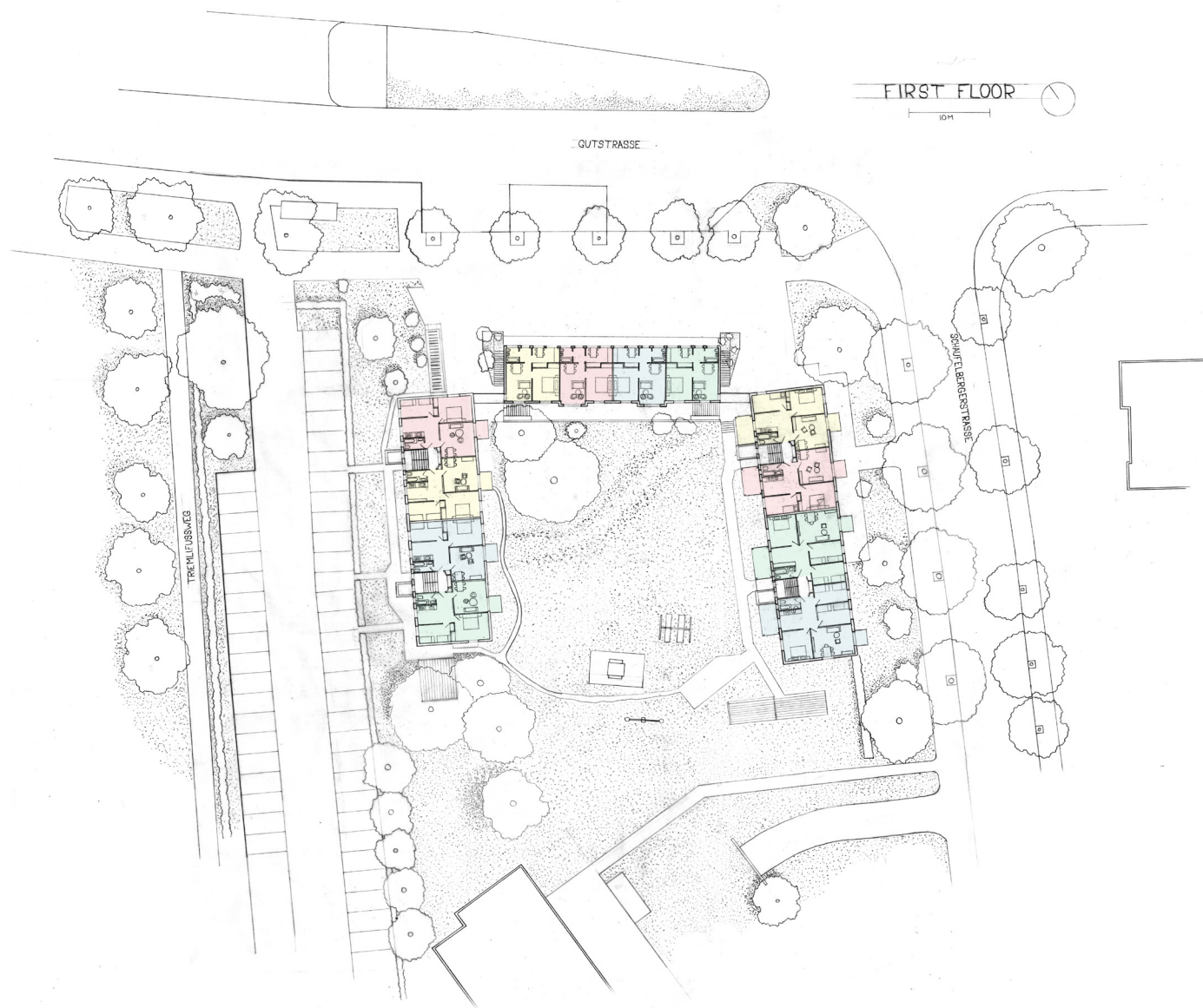


LIVING COMMUNALLY

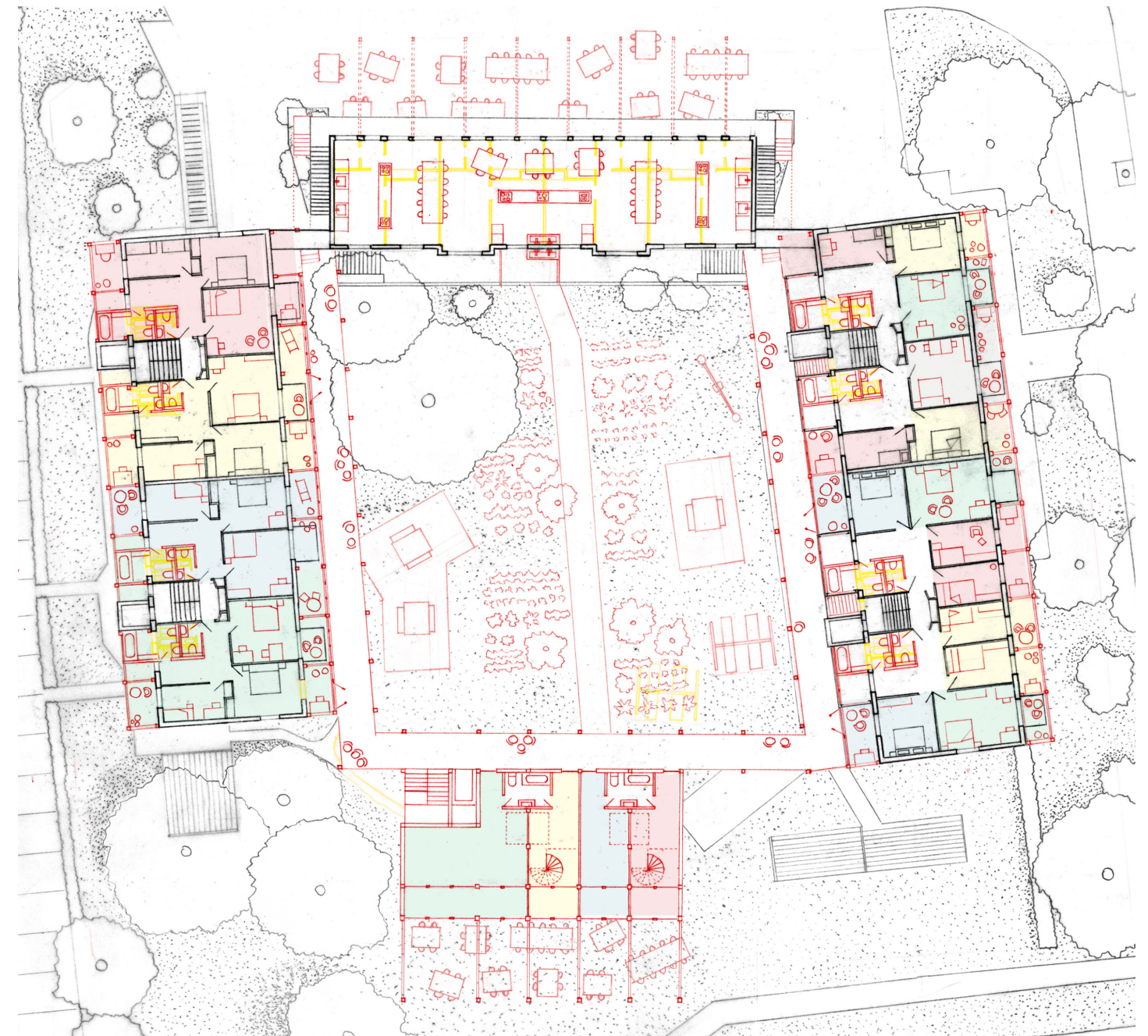
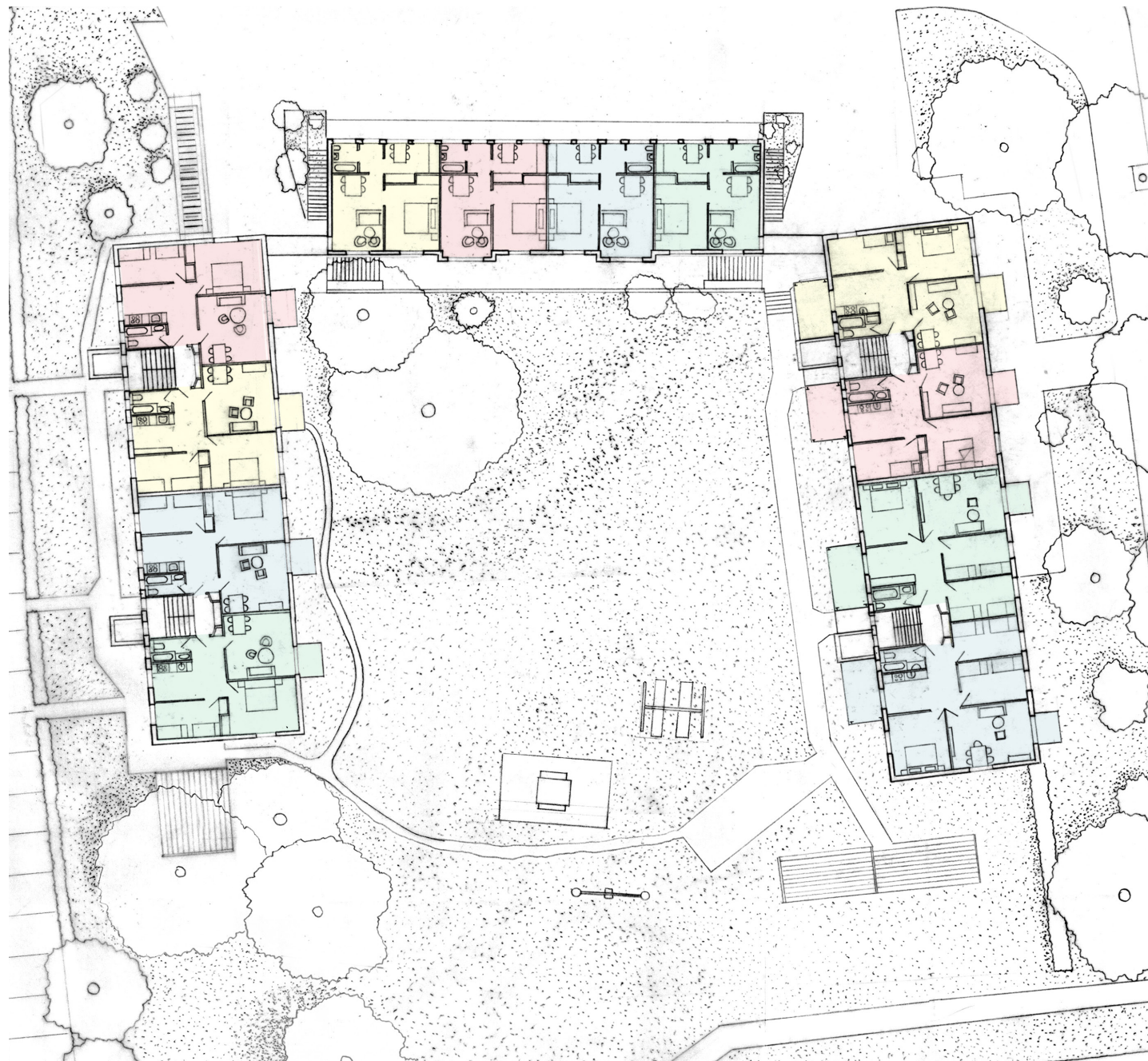
The interventions aim to change from an all-inclusive type of living with a relatively big private surface per inhabitant to smaller private rooms combined with big shared common spaces such as living rooms in the roofs, kitchens in the attached pavilion on the north side, and a laundry on its roof.



LIVING COMMUNALLY

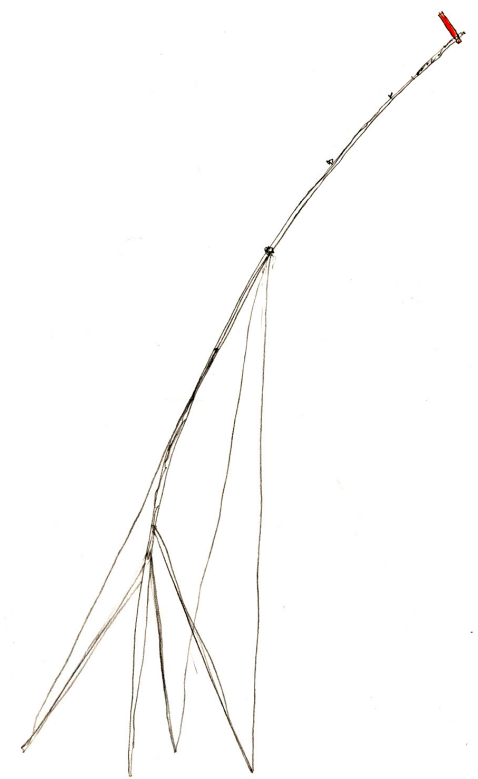
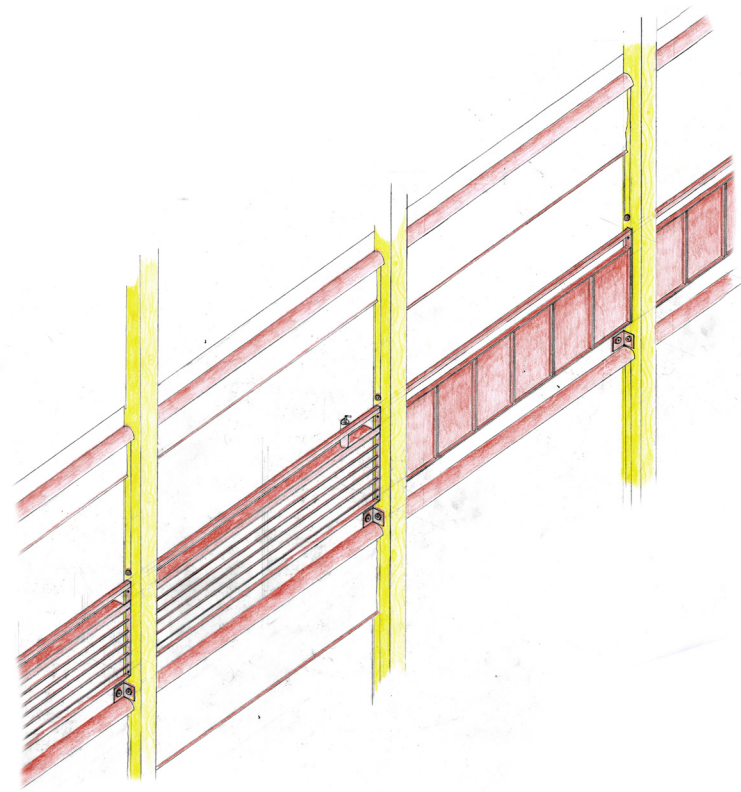
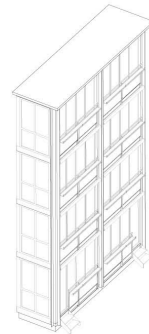
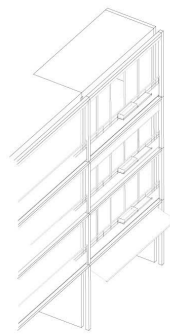
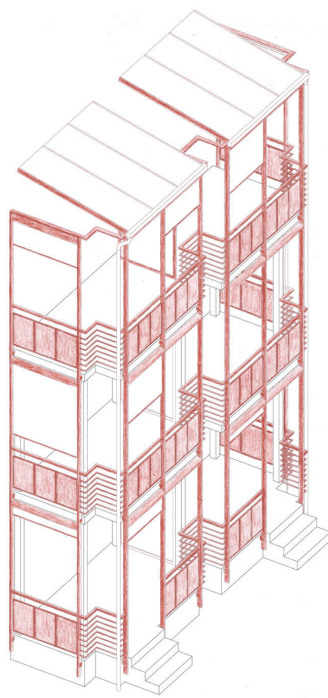
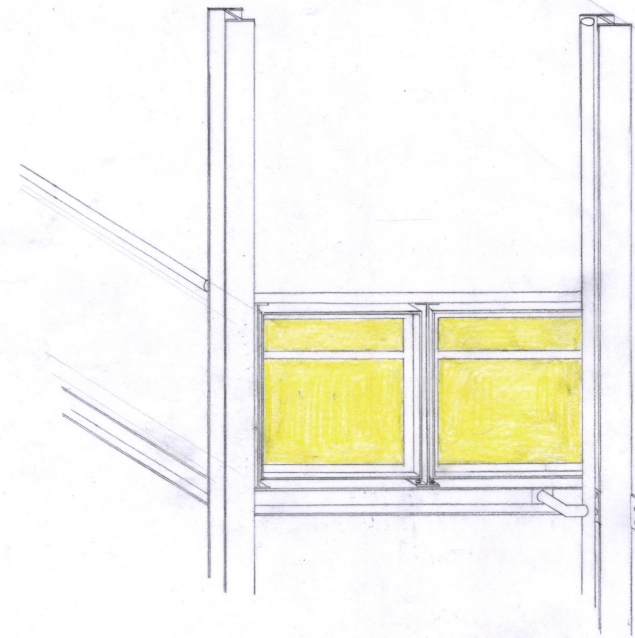
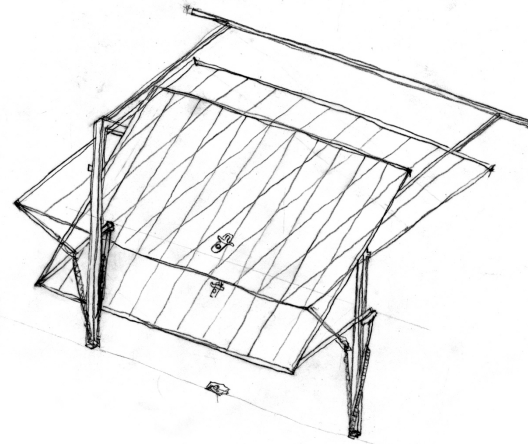
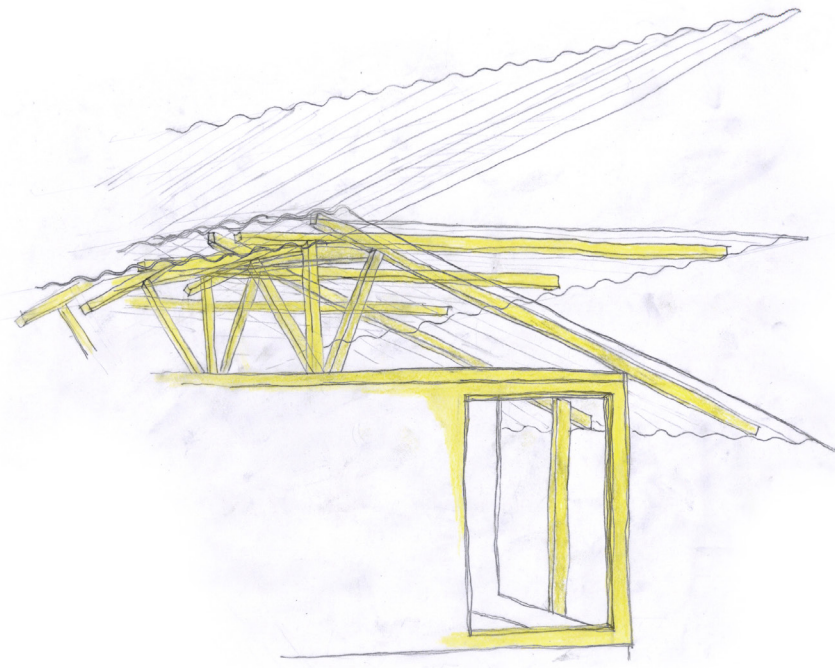


LIVING COMMUNALLY



LIVING COMMUNALLY

The typical nuclear family apartments are split into clusters of rooms without private living rooms or kitchens. By doing so, the number of inhabitants aimed by Gilbert & George is reached. However, some apartments can be used further as they are for bigger families, in order to avoid a lack of diversity of the inhabitants.



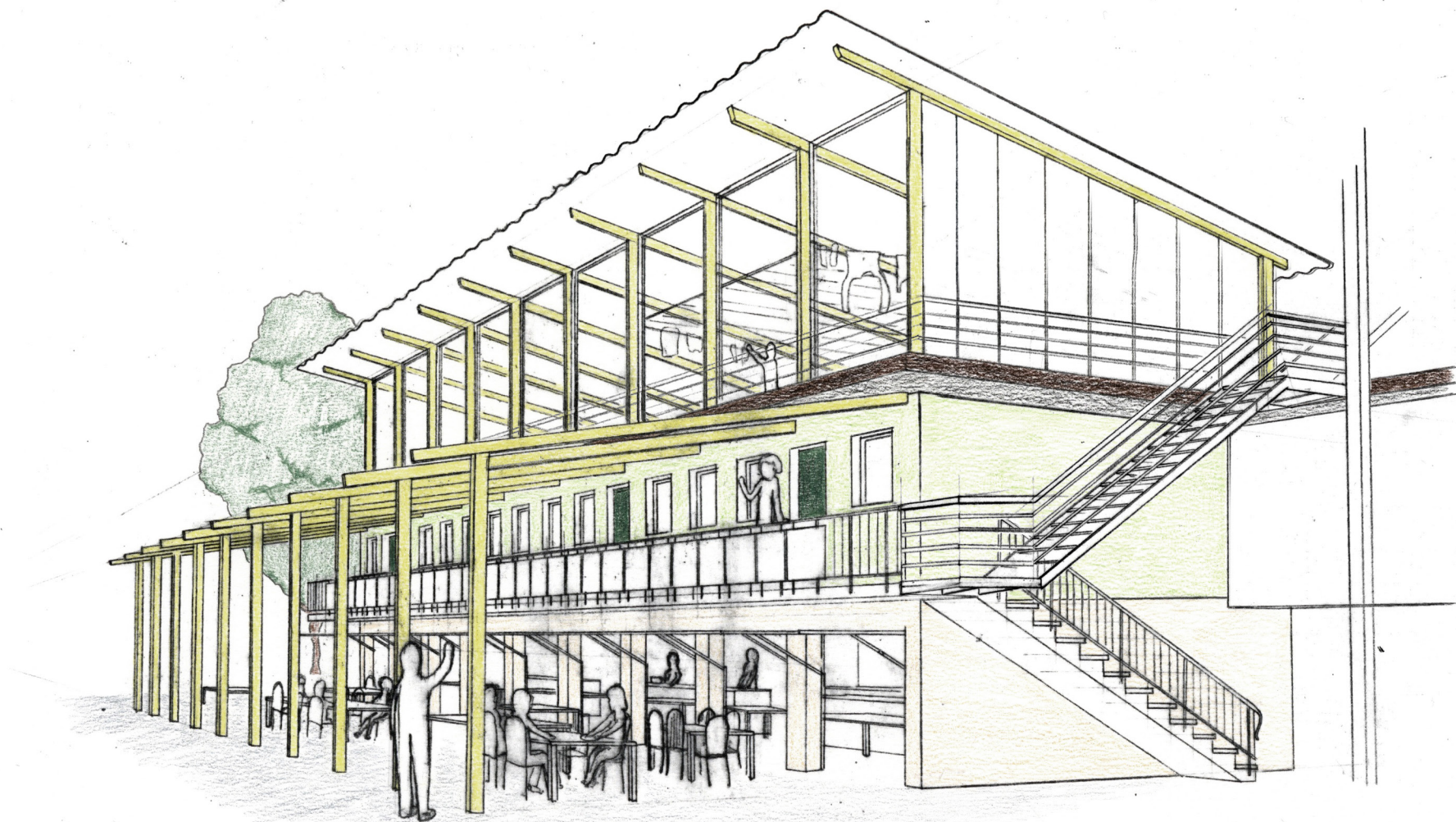
DETAILS

A collection of details found on site or in 'Gilbert & George' inspire the materiality of the proposition.



PAVILION

The attached pavilion on the side of the Gutstrasse is currently used as housing and garages.



PAVILION

It is opened and converted into a common kitchen for the community with a terrace on the sidewalk of the Gutstrasse, accessible by the public.



PAVILION



ROOMS

The existing apartments for nuclear families are partly converted into cluster apartments with shared toilets. A new facade extend the rooms with winter gardens.



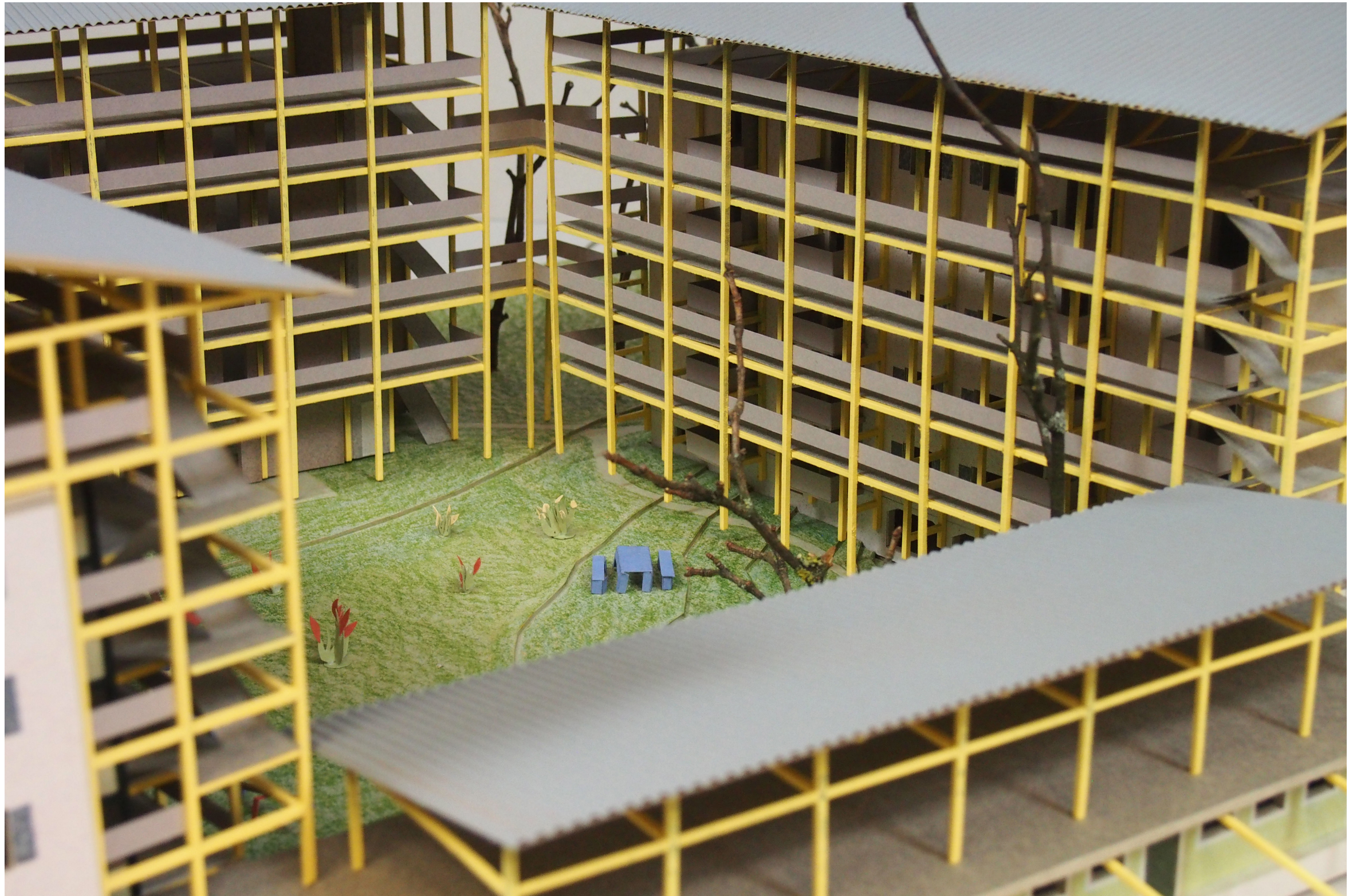
ROOMS

The existing apartments for nuclear families are partly converted into cluster apartments with shared toilets. A new facade extend the rooms with winter gardens.

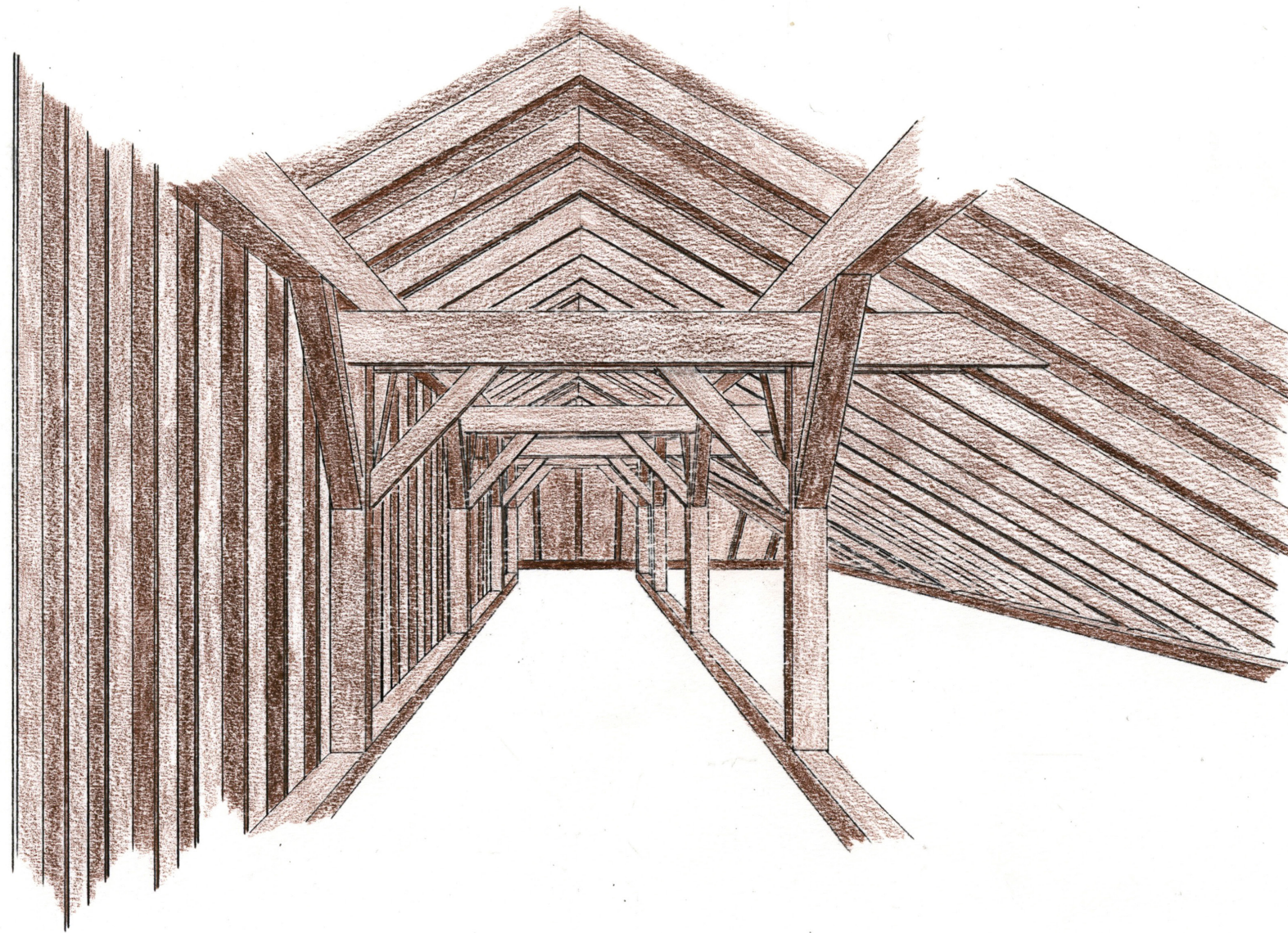


GALLERIES

The apartments are linked with circulation galleries on the side of the interior courtyard, wide enough to be the stage of social interaction between the community's neighbors.

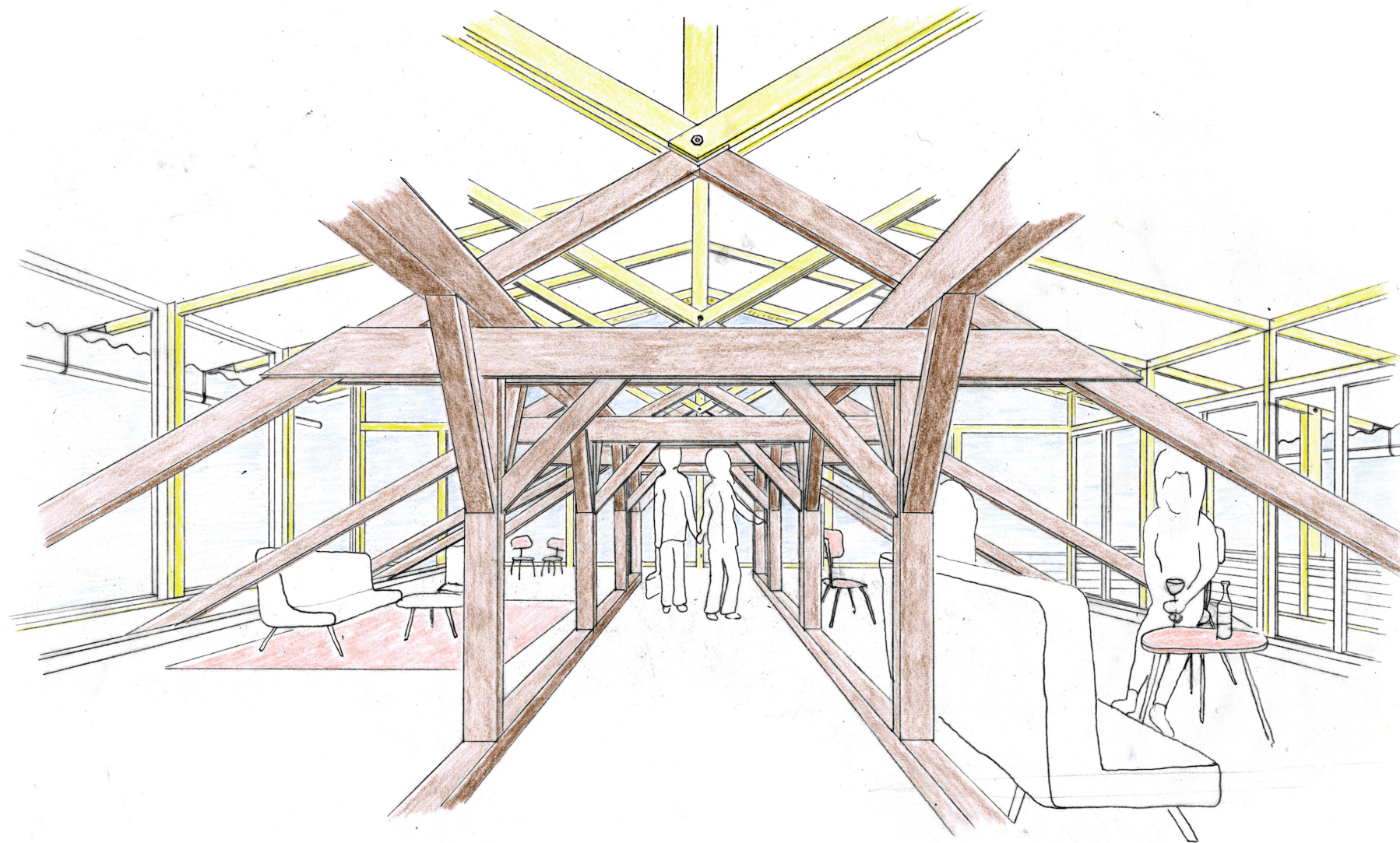


GALLERIES



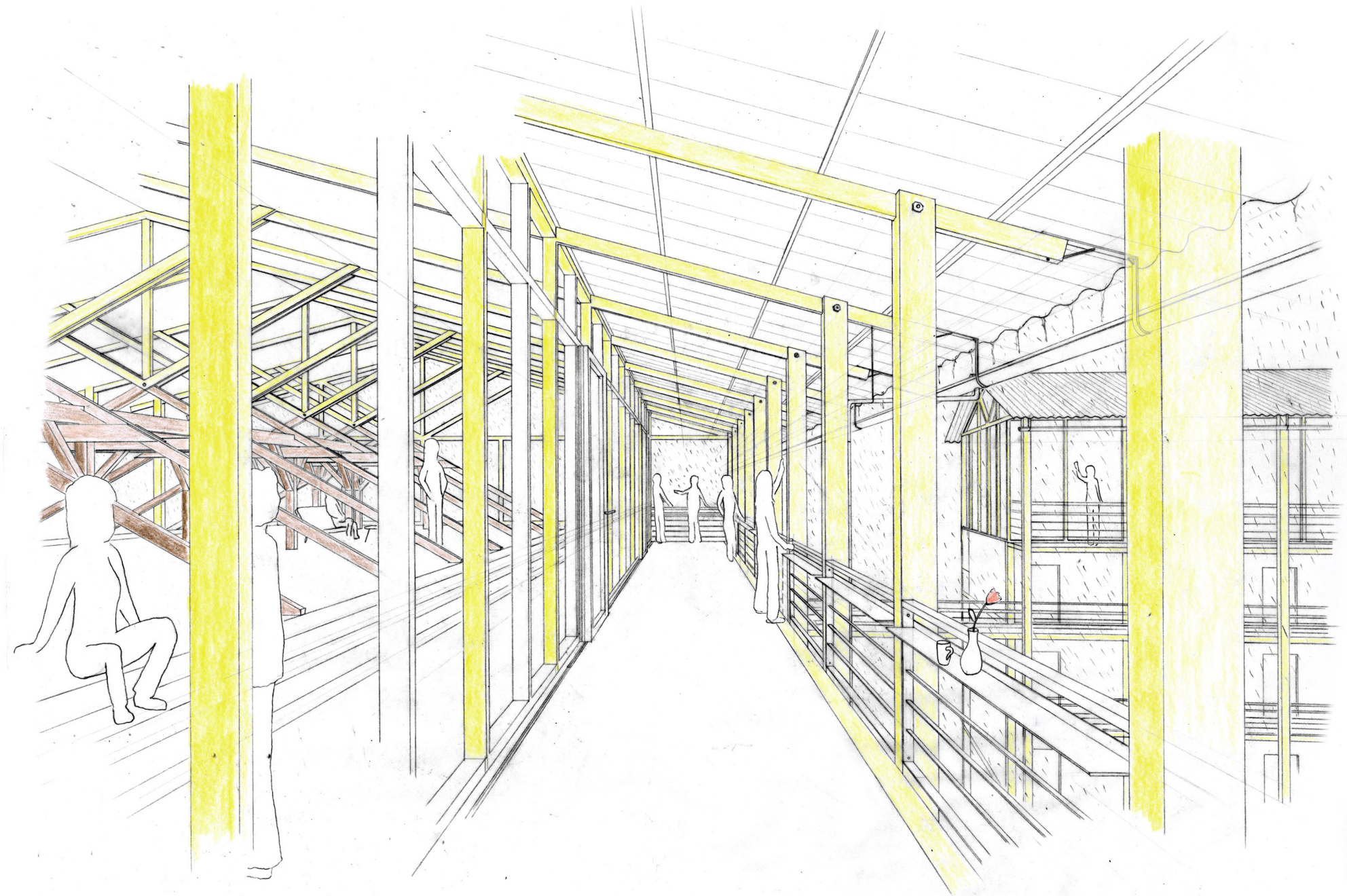
ROOFS

The attics, now used as storage, receive a new roof to house shared living spaces.



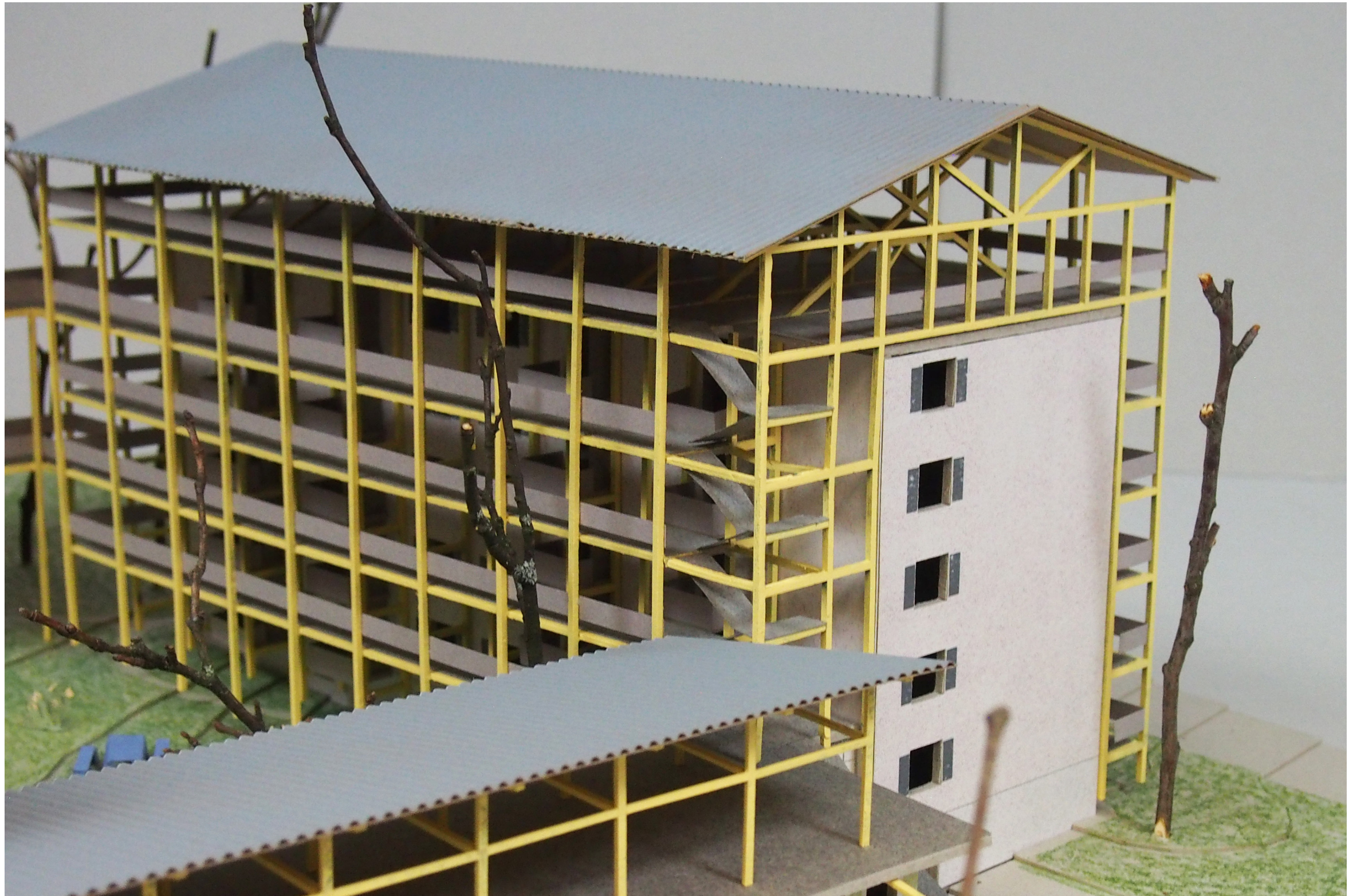
ROOFS

The attics, now used as storage, receive a new roof to house shared living spaces. The new structure is fixed upon the existing one.



ROOFS

The hanging gutter makes visible the path of the water flowing down to the garden.



ROOFS



ADDITIONAL BUILDING

The additional building works with the same characteristics than the rest of the proposal. It houses a shared kitchen on the ground-floor, with a terrace invading the neighboring building's lawn and a shared living room under the roof. It also features a lift that allows people with disabilities to access their apartments without the need to walk up stairs, as it is the case with the existing lifts.



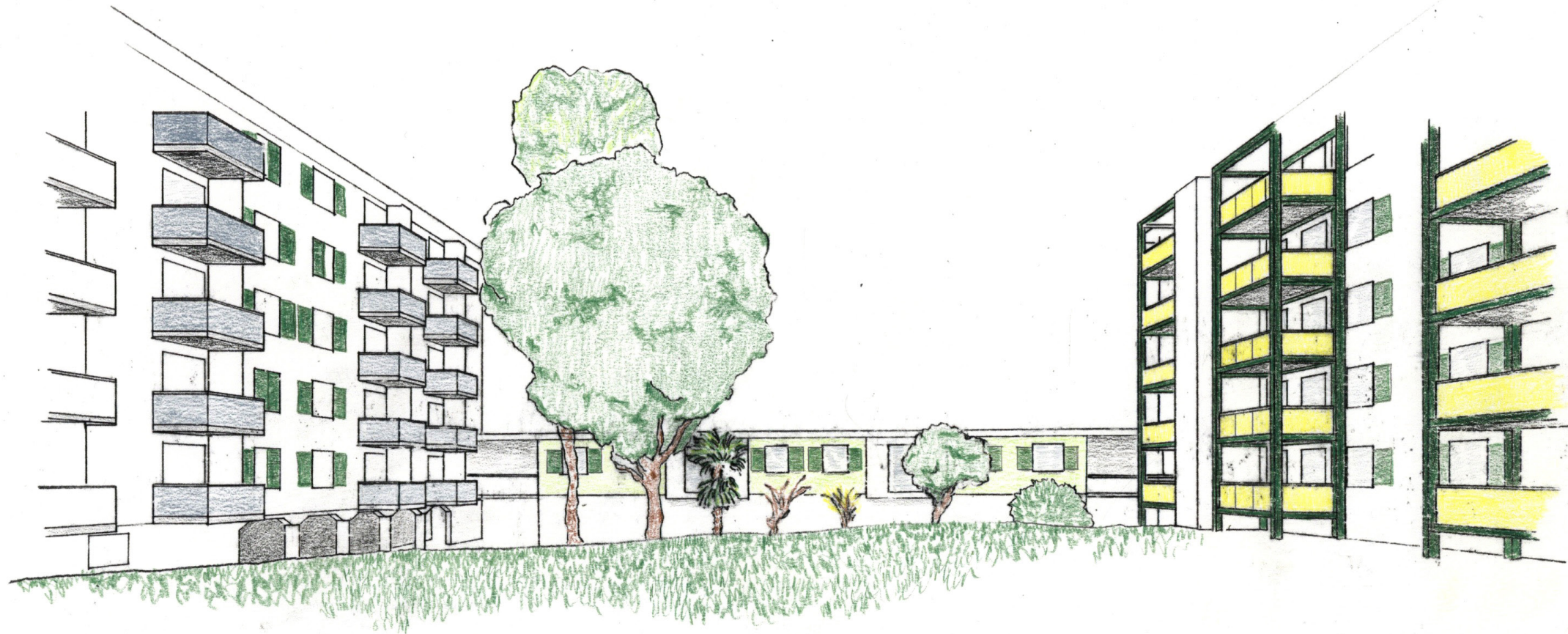
ADDITIONAL BUILDING

It features an apartment structure that diversifies the types of dwellings of the rest of housing, proposing double-height apartments to which minimal units can be annexed by opening a garage-door-like wall partition if needed.



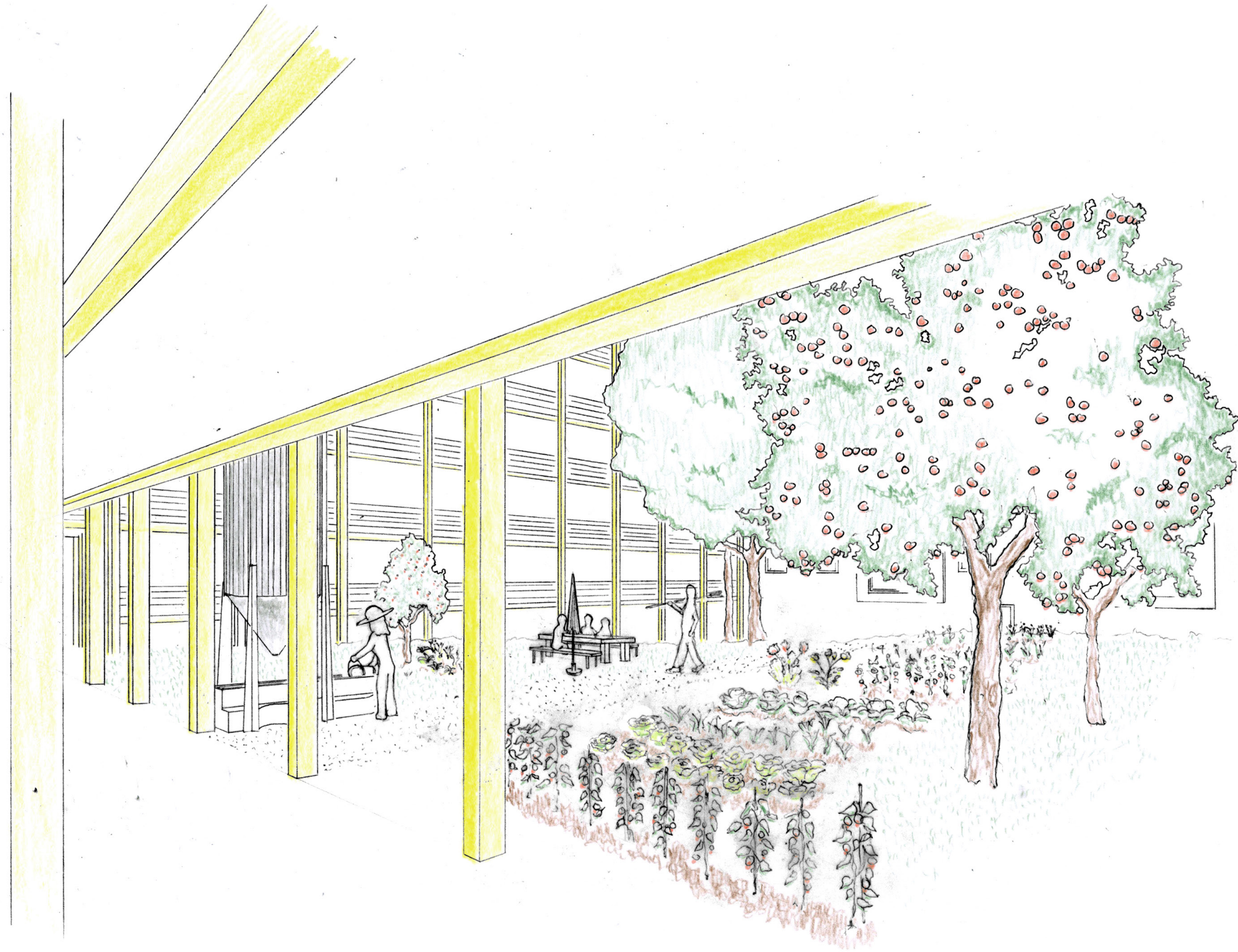
ADDITIONAL BUILDING

It features an apartment structure that diversifies the types of dwellings of the rest of housing, proposing double-height apartments to which minimal units can be annexed by opening a garage-door-like wall partition if needed.



COURTYARD

The interstitial green space, nowadays empty and unused.



COURTYARD

It is activated by the galleries and the community around it, and finds one of the purpose it was originally designed for, a community garden. For that use, water is collected from the roofs with hanging gutters that let it flow down to Justinas Zukly's water silos positioned at the side of the courtyard.

GUTSTRASSE



A POSSIBLE ALTERNATIVE