

Theme A: Triemlifussweg as Adaptive Infrastructure

APARTMENT - GARDEN - STREET - COURTYARD

Théophile Ray



Chair of Prof. Jan De Vylder

Assistants:

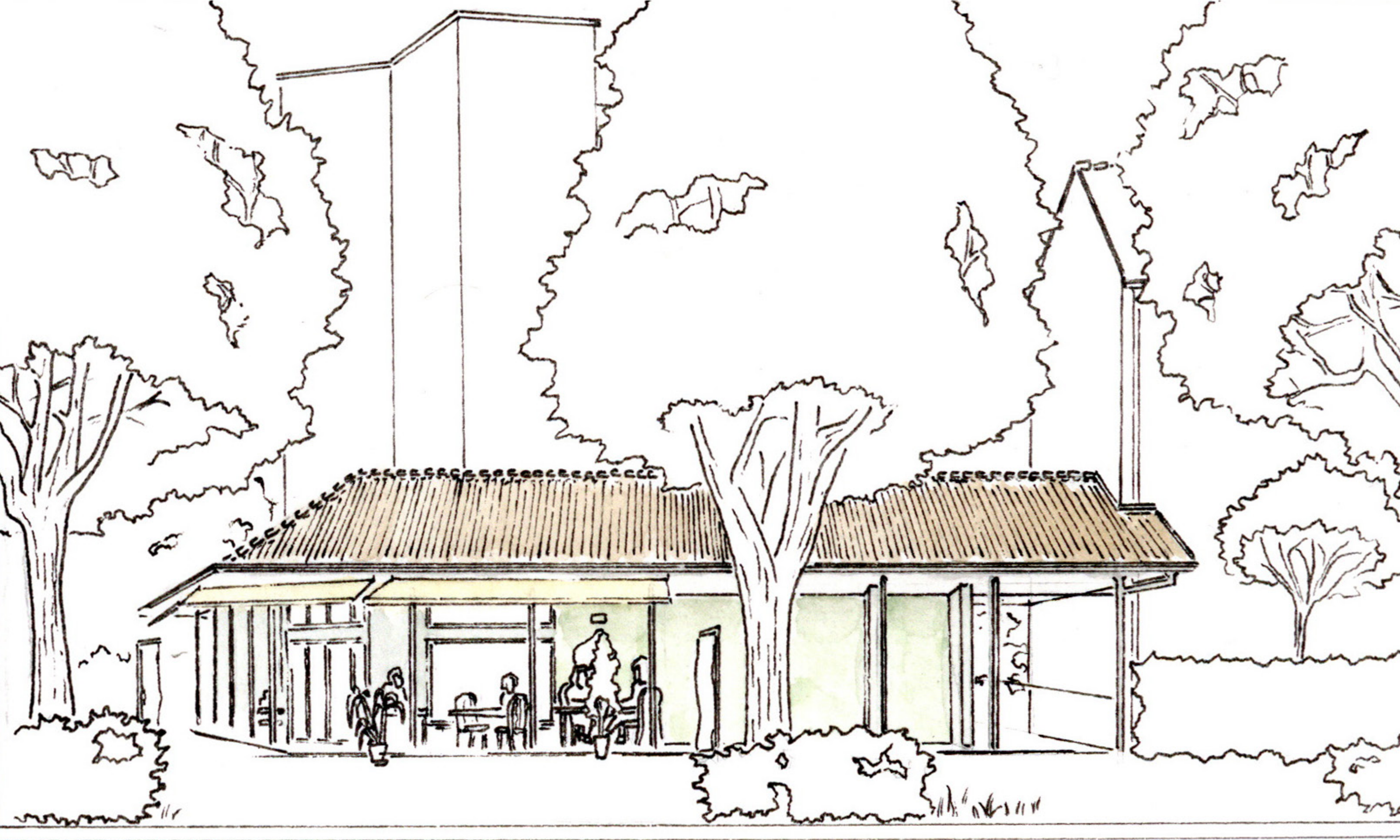
Annamaria Prandi and Luca Mostarda

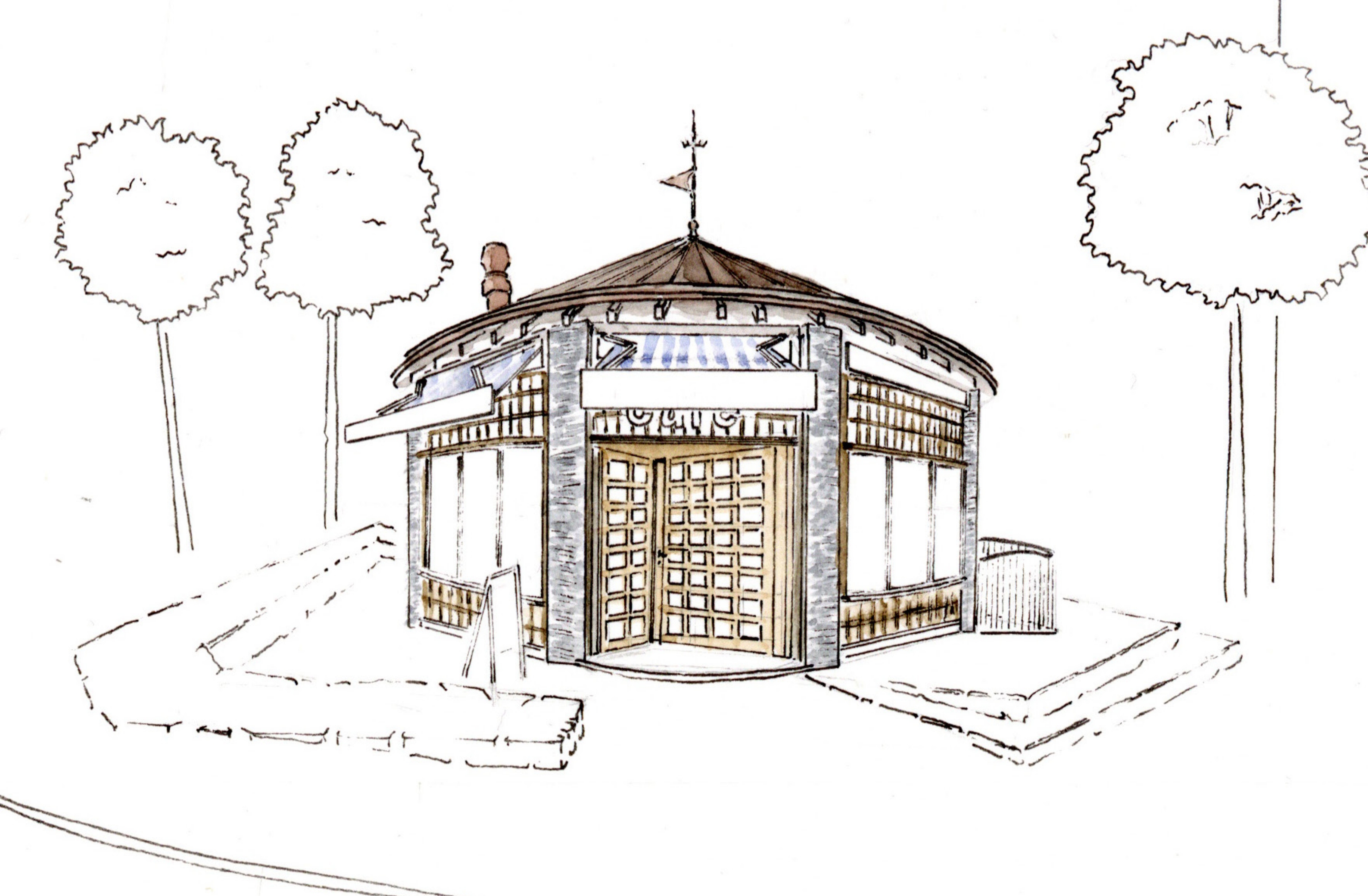
The Triemlifussweg and its surroundings as they can be seen today is the result of multiple urban projects of mass housing happening between the 1940s and the 1970s. The monocultural dimension of the planning and the large garden city spaces separating the buildings leave little place for interaction between inhabitants or with the outside world. Thus, rare buildings adopting nondomestic function, such as shops, bakeries and community rooms got an important social value. These elements are connected both to the isolated courtyards stretching between modernist apartments units and to the public realm of Zürich. Their small scale, the uniqueness of their detailing and the flexibility of their indoor spaces made them ideal elements for appropriation. Their functions evolved over time making social infrastructures able to adapt and sustain the change of the city.

Most of the buildings in the neighbourhood are reaching the end of their lifecycle. Plot by plot, the modernist dwellings around the Triemlifussweg are replaced by contemporary volumes. By taking advantage of the luxurious green environment of the garden cities and the flexibility of the simple slab structure in the buildings, four projects are designed with the aim to bring a diversity of functions and details within, around and between some of the most disconnected blocks. Taking inspiration in the existing social nodes of Triemli, they give hint of a process to increase the diversity and the number of appropriable spaces in the area. Instead of the unsustainable replacement constructions process and its resulting waste production and gentrification, these minor changes and additions are used to reveal qualities in the existing situation and promote a progressive transformation of the architecture.

PROMENADE ALONG THE TRIEMLIFUSSWEG - WALK THROUGH ZÜRICH

APARTMENT - GARDEN - STREET - COURTYARD





Theme A: Triemlifussweg as Adaptive Infrastructure

Promenade along the Triemlifussweg

Example of adaptive infrastructure: Thiwa's Café (previously event room of the cooperative Sonnengarten)

View from the Birmensdorferstrasse



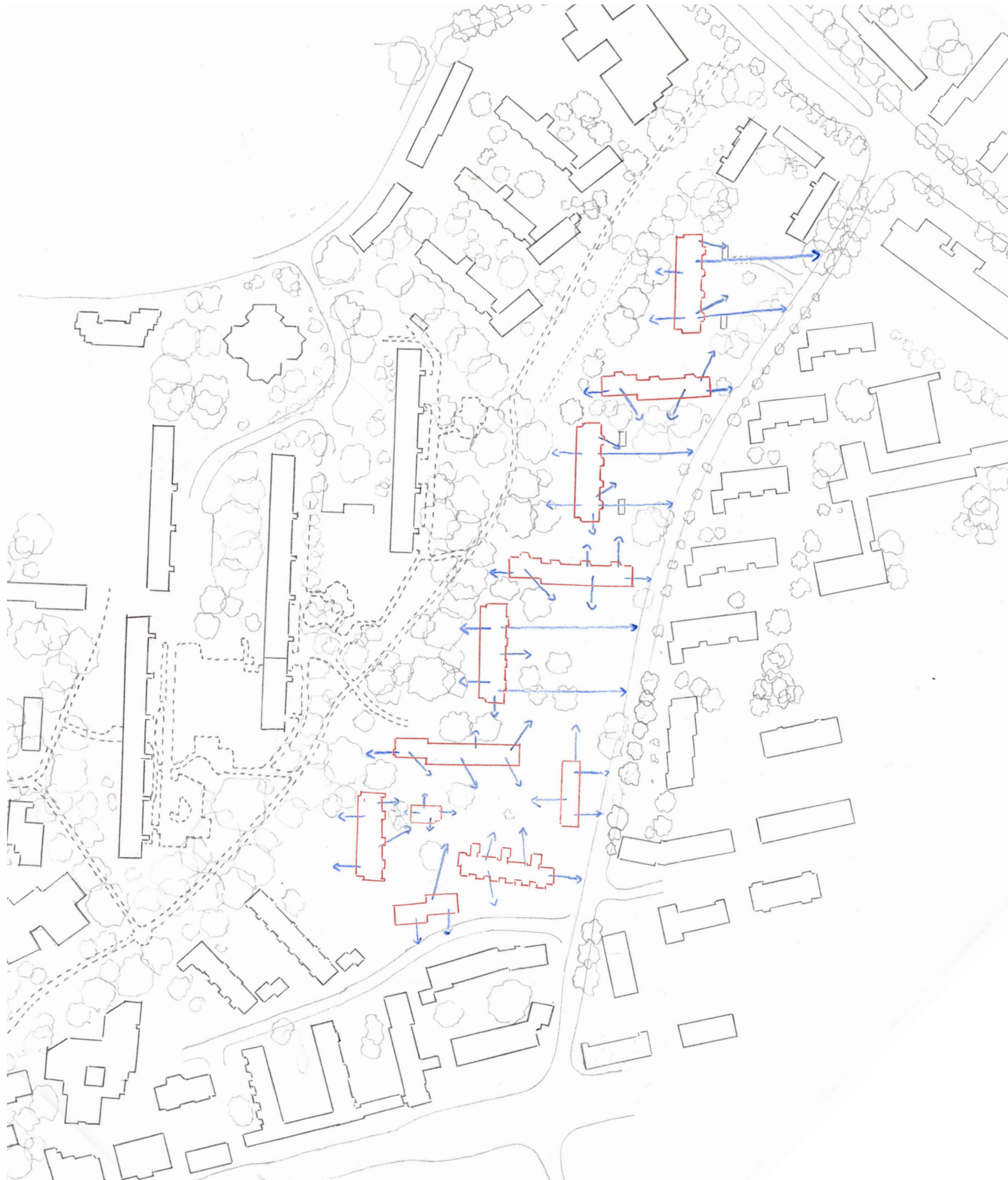
Theme A: Triemlifussweg as Adaptive Infrastructure

Promenade along the Triemlifussweg

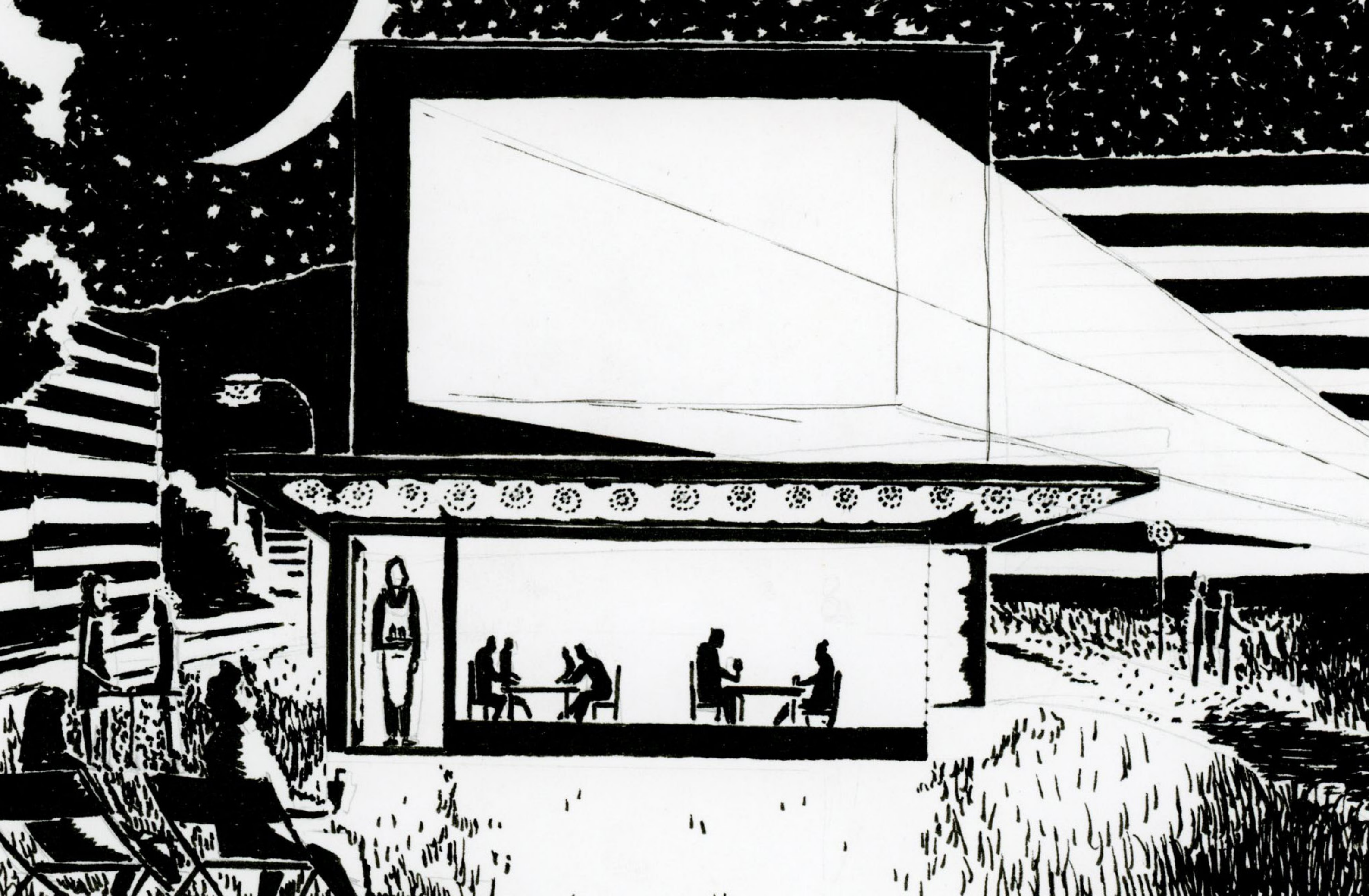
A room for a project: the modern slab buildings of the Schaufelbergerstrasse

View from a courtyard on street number 48-54







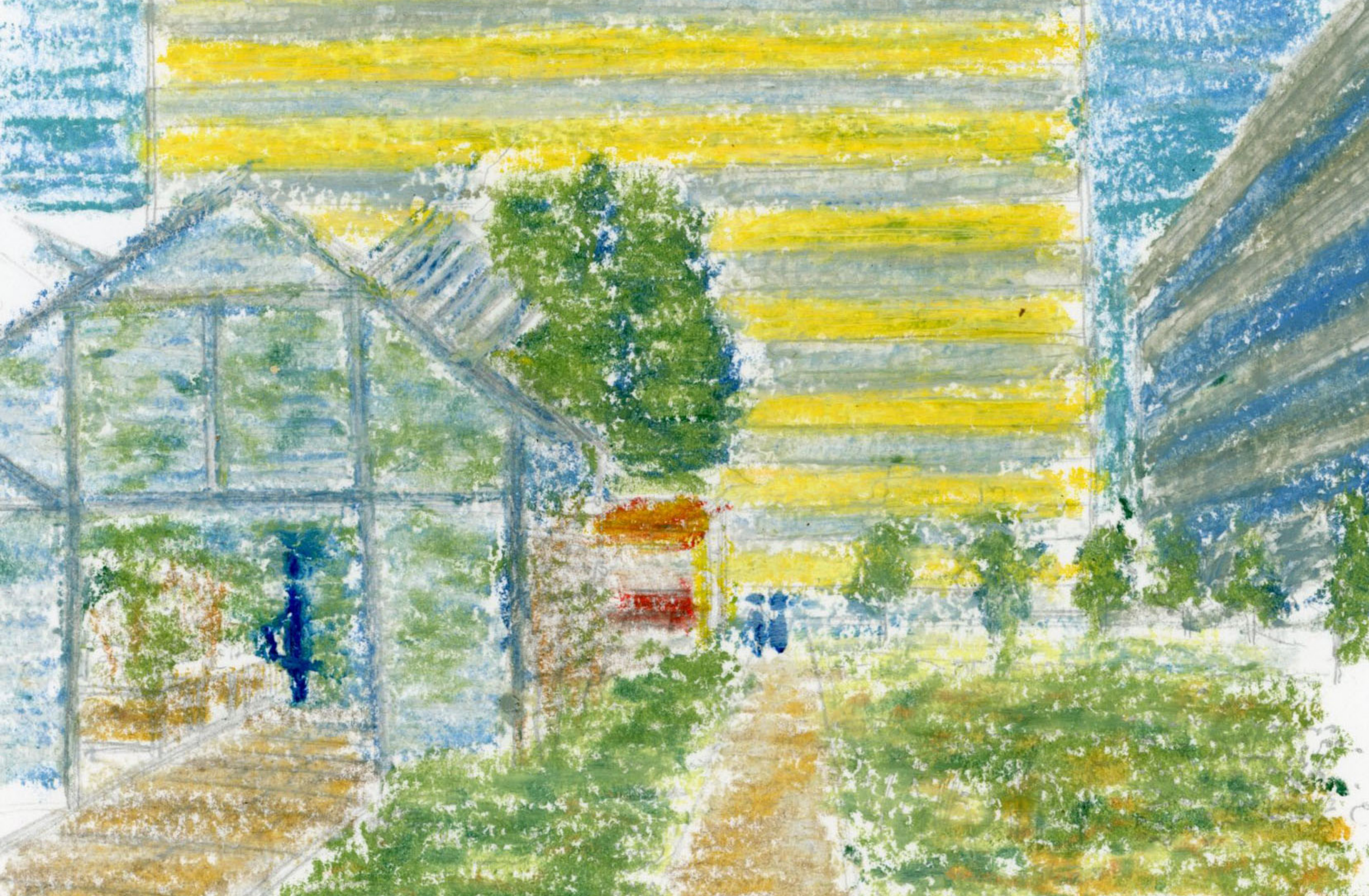


Theme A: Triemlifussweg as Adaptive Infrastructure

Promenade along the Triemlifussweg

First sketches

What could happen at night?



Theme A: Triemlifussweg as Adaptive Infrastructure

Promenade along the Triemlifussweg

First sketches

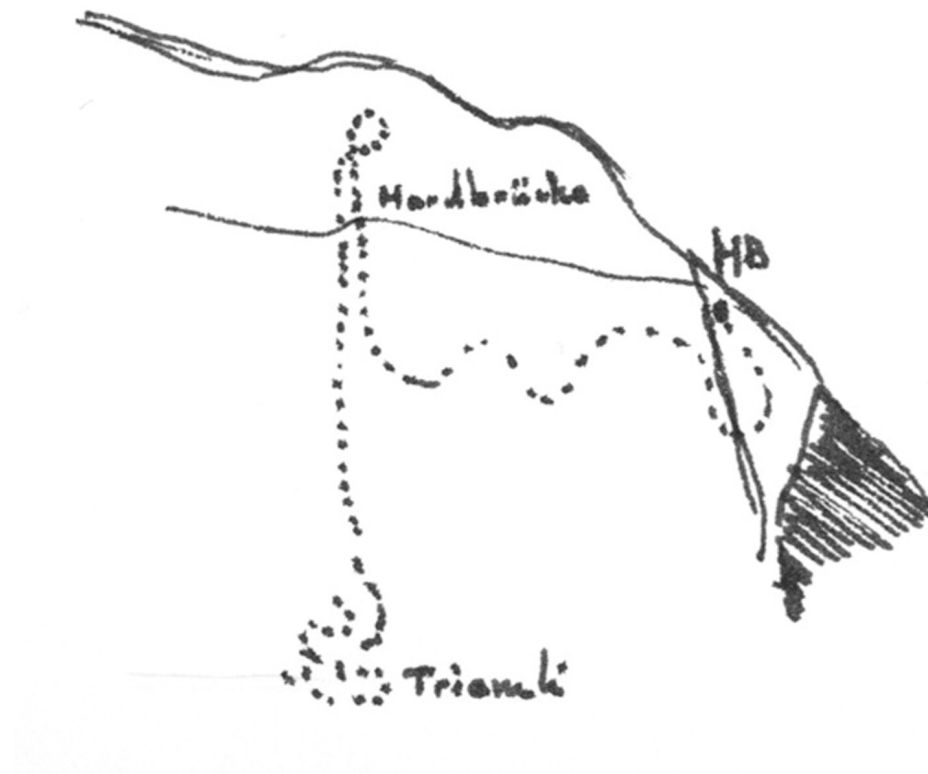
What could happen between the buildings?

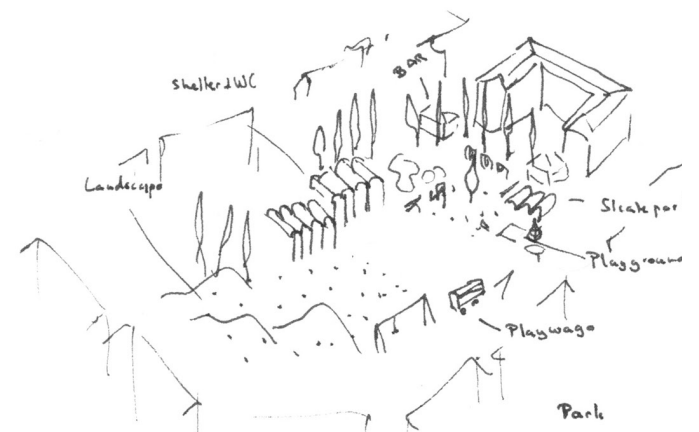
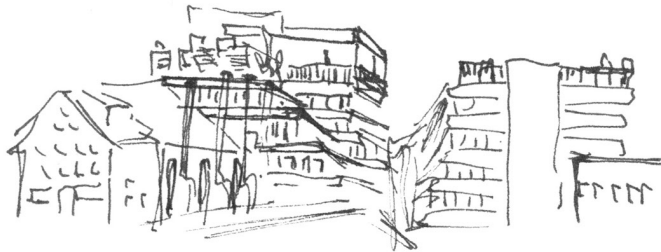
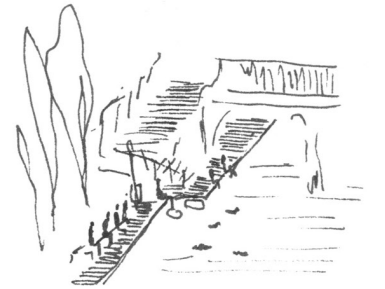
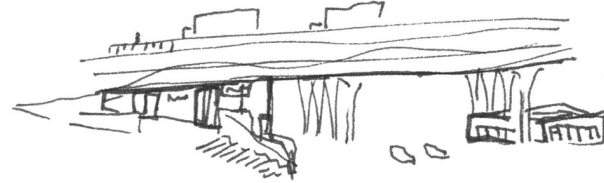
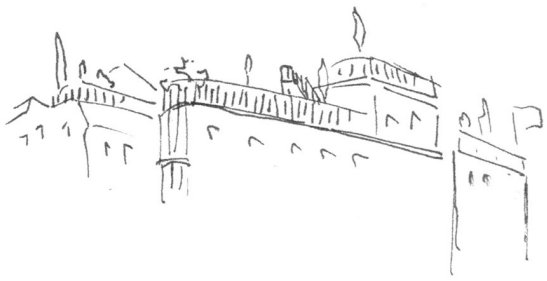


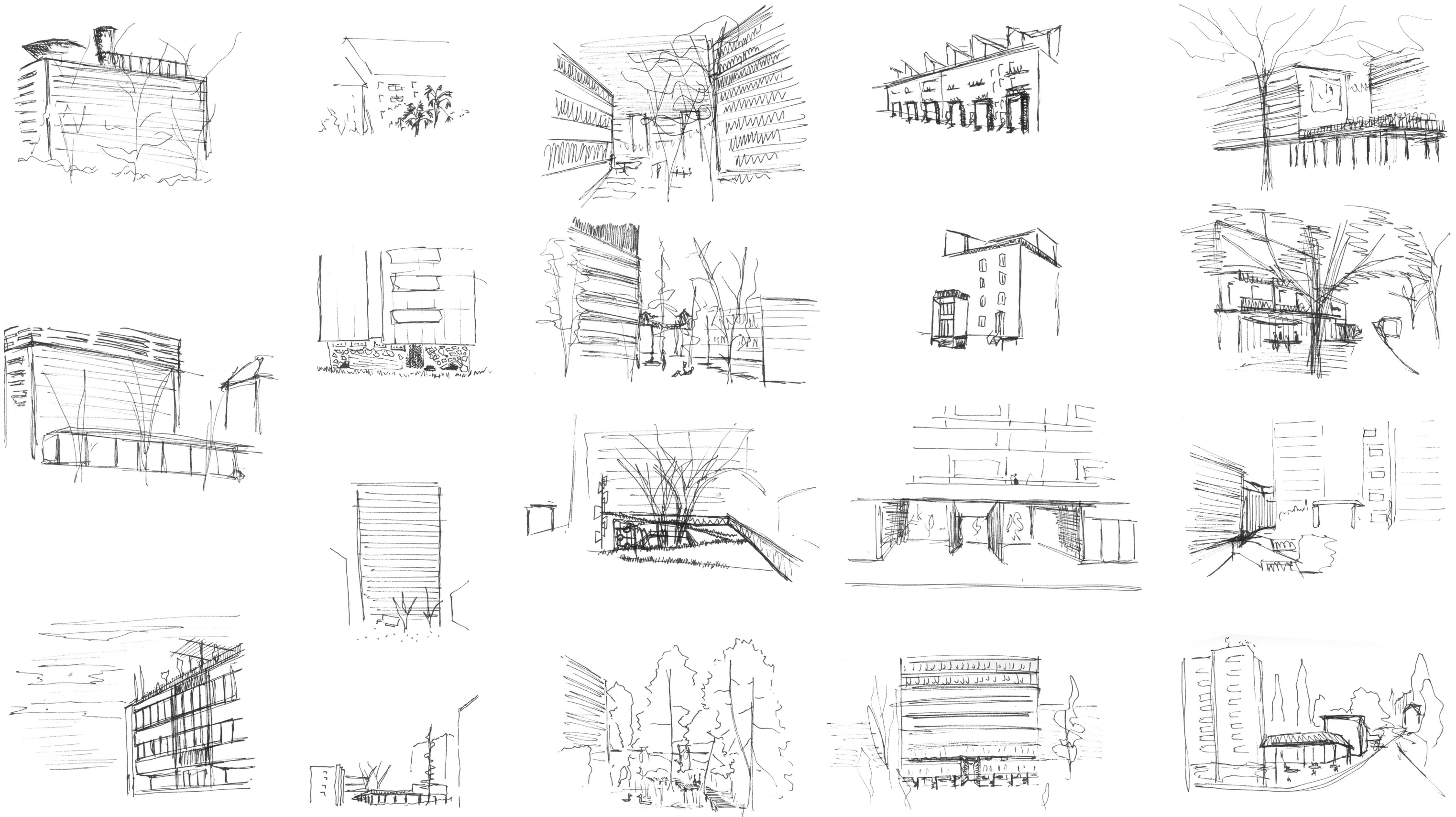
PROMENADE ALONG THE TRIEMLIFUSSWEG - WALK THROUGH ZÜRICH

APARTMENT - GARDEN - STREET - COURTYARD

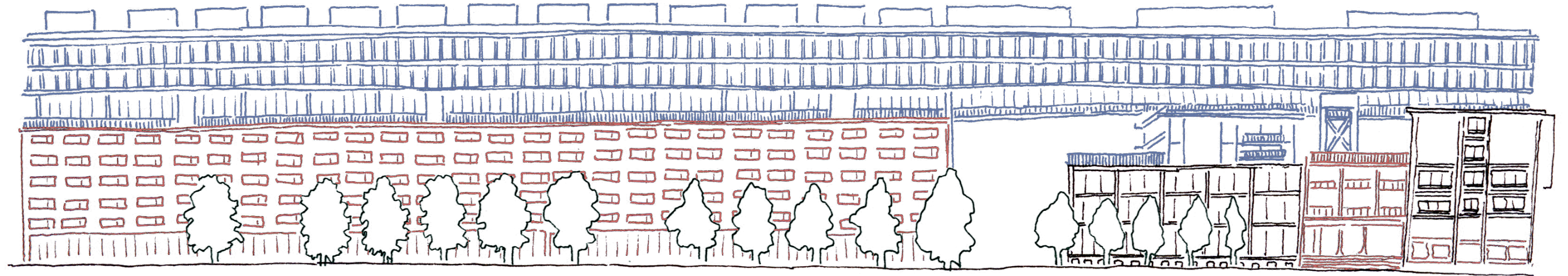
1 walk
36 sketches











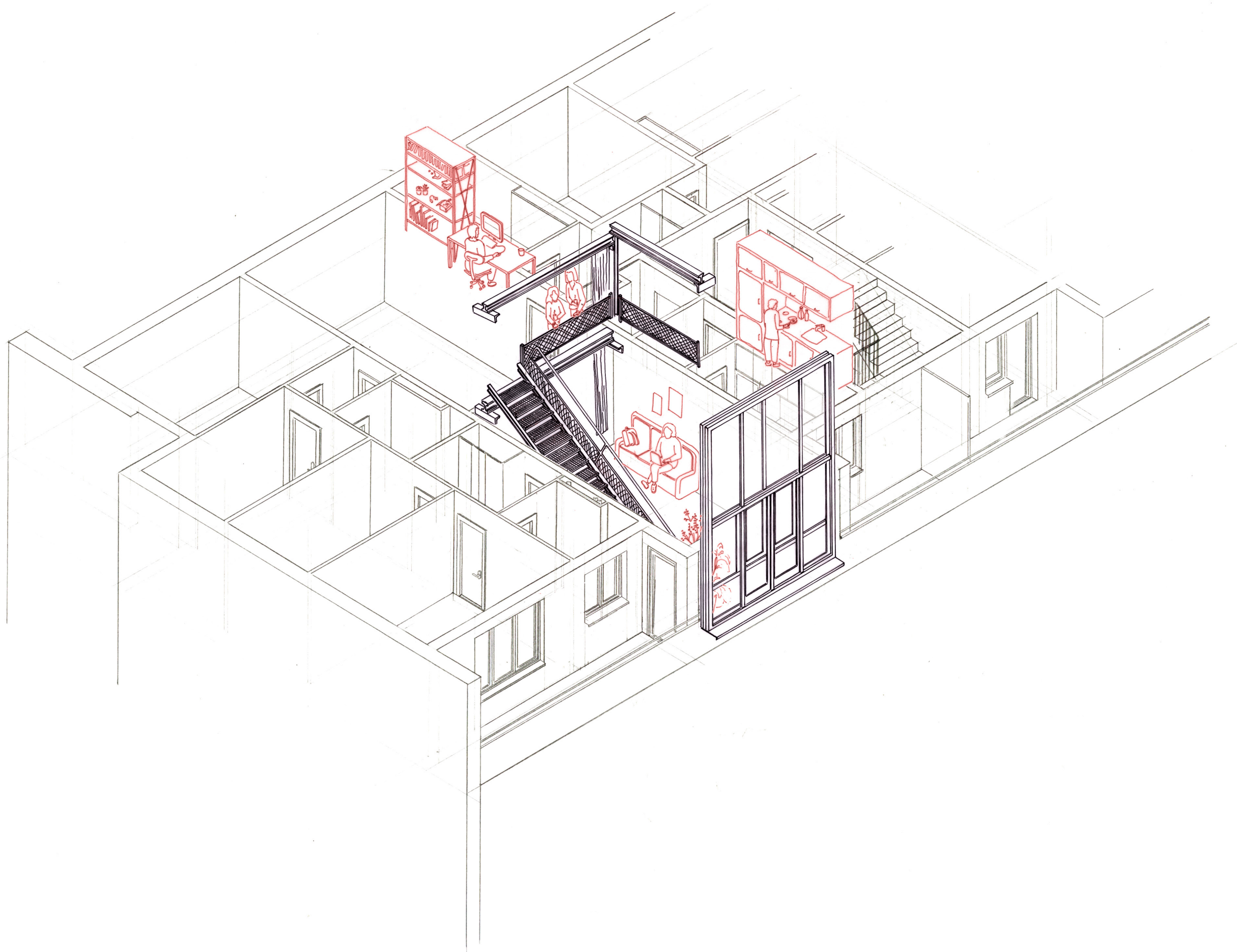


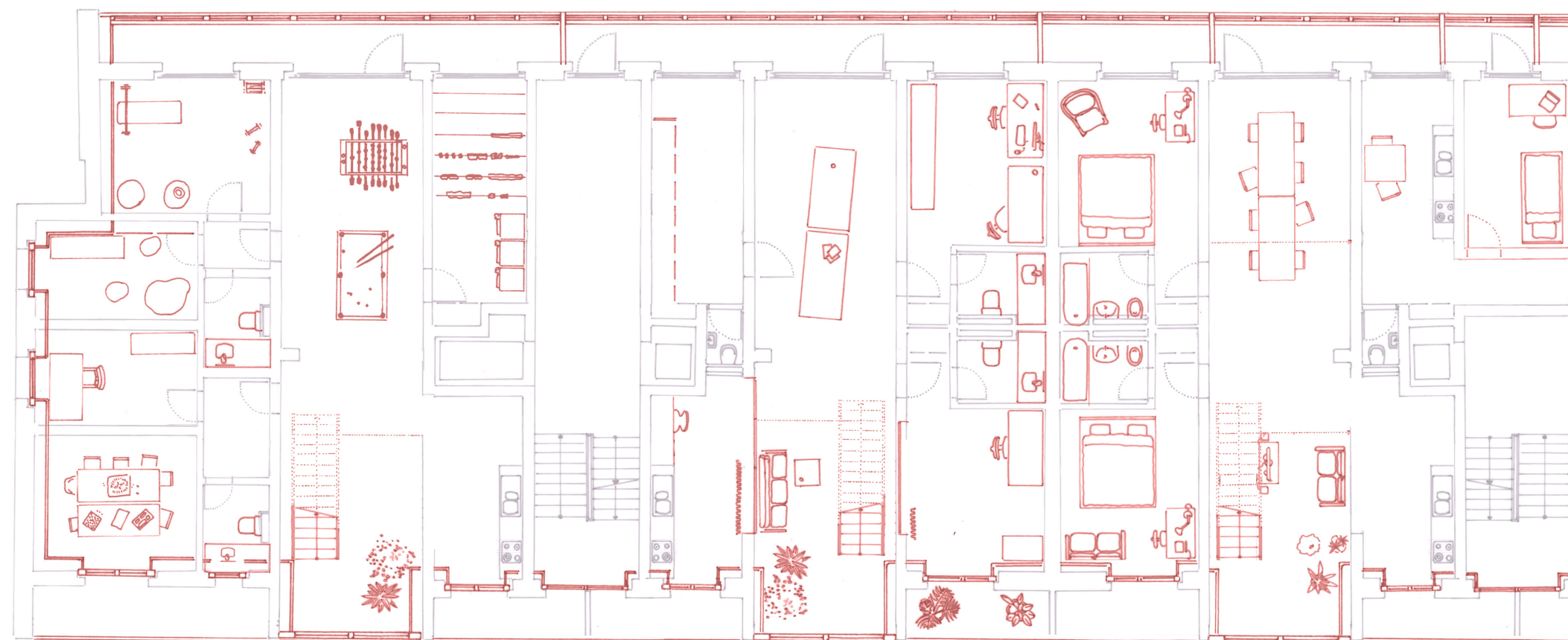
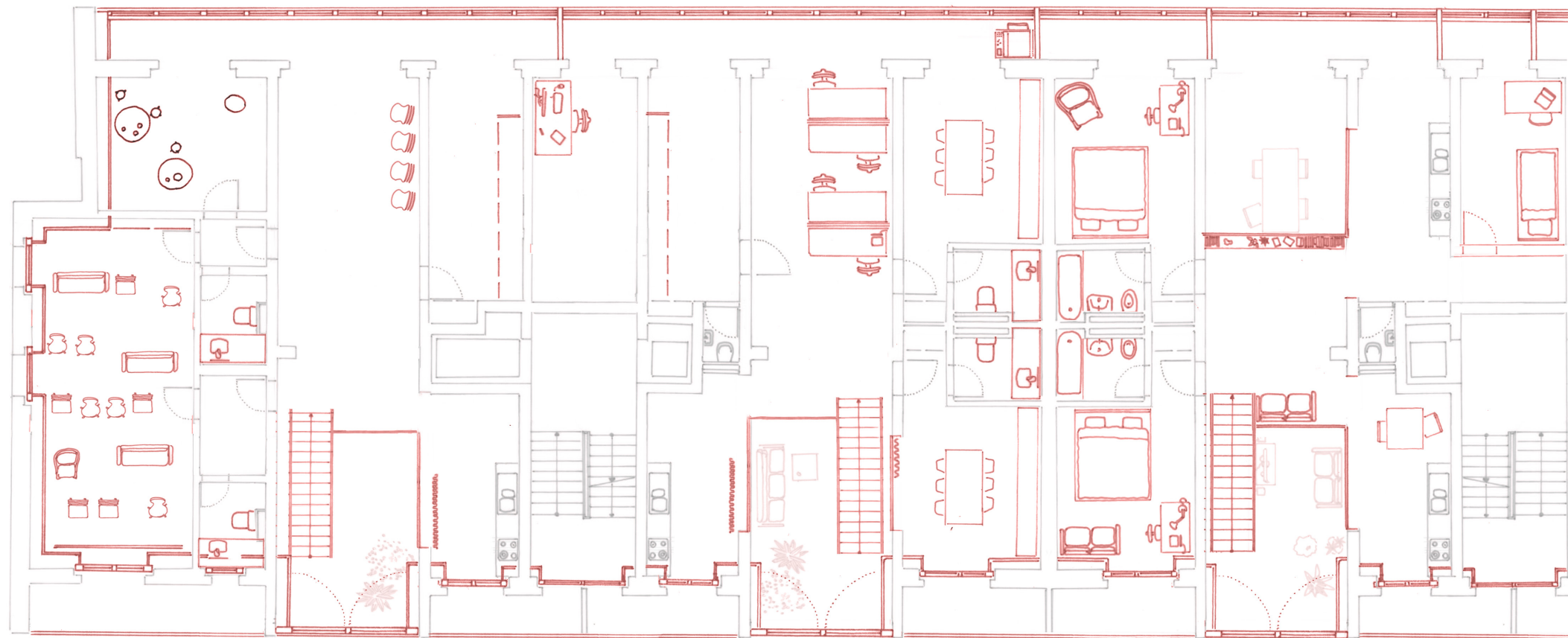


PROMENADE ALONG THE TRIEMLIFUSSWEG - WALK THROUGH ZÜRICH

APARTMENT - GARDEN - STREET - COURTYARD









Theme A: Triemlifussweg as Adaptive Infrastructure

Apartment

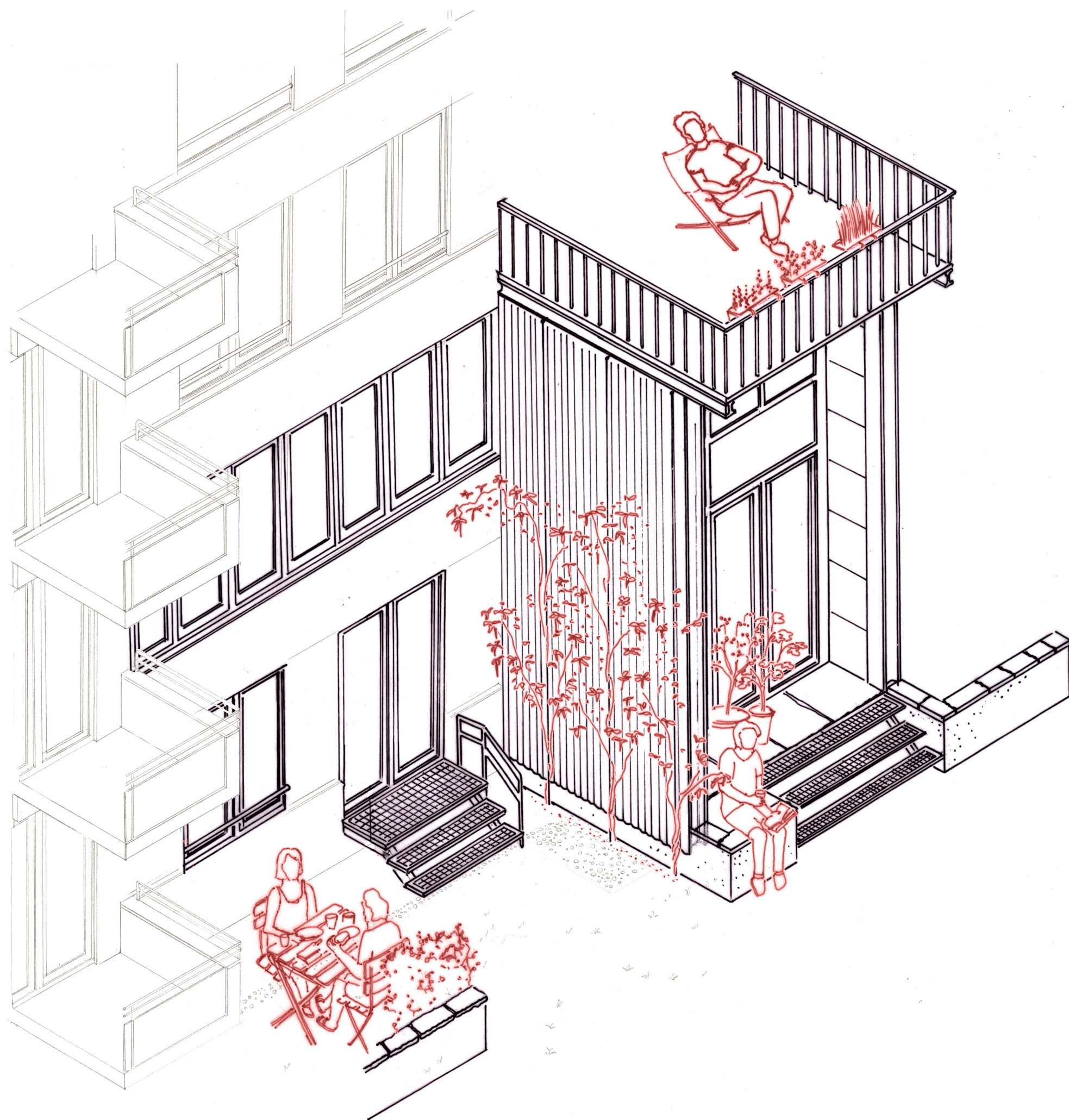
Office

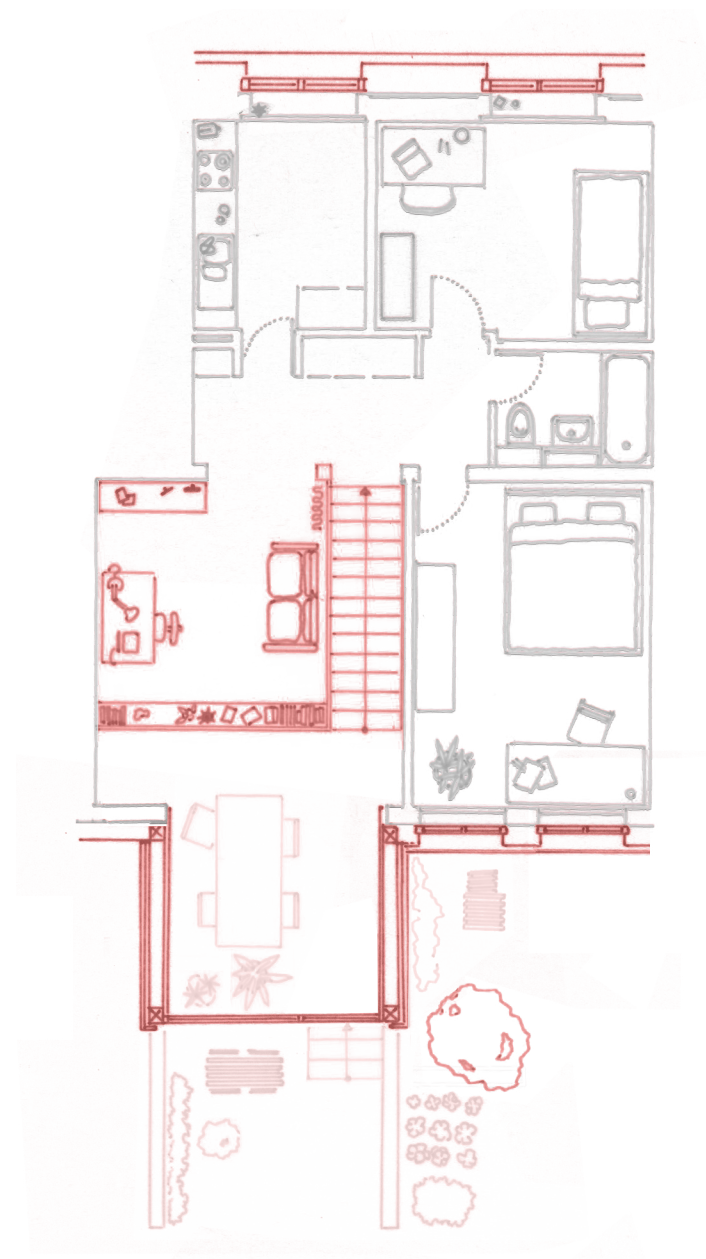
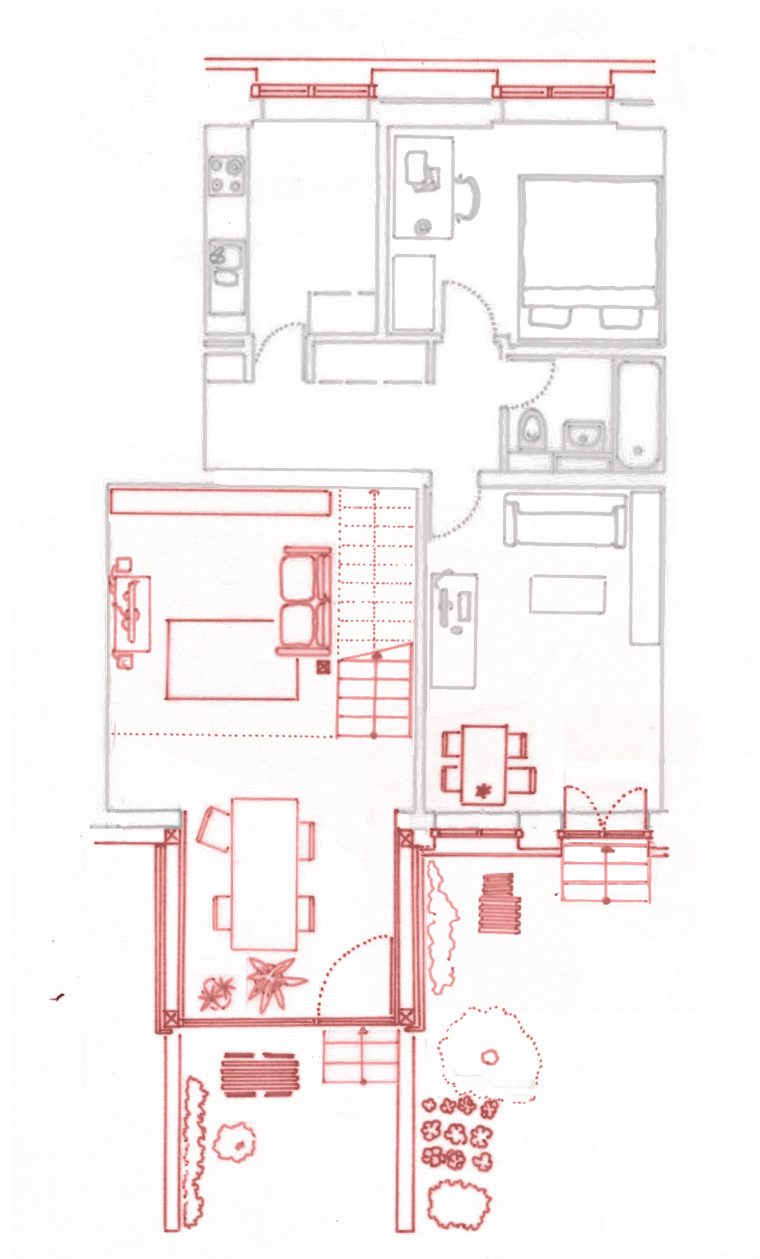
View on the East facade

PROMENADE ALONG THE TRIEMLIFUSSWEG - WALK THROUGH ZÜRICH

APARTMENT - GARDEN - STREET - COURTYARD









Theme A: Triemlifussweg as Adaptive Infrastructure

Garden

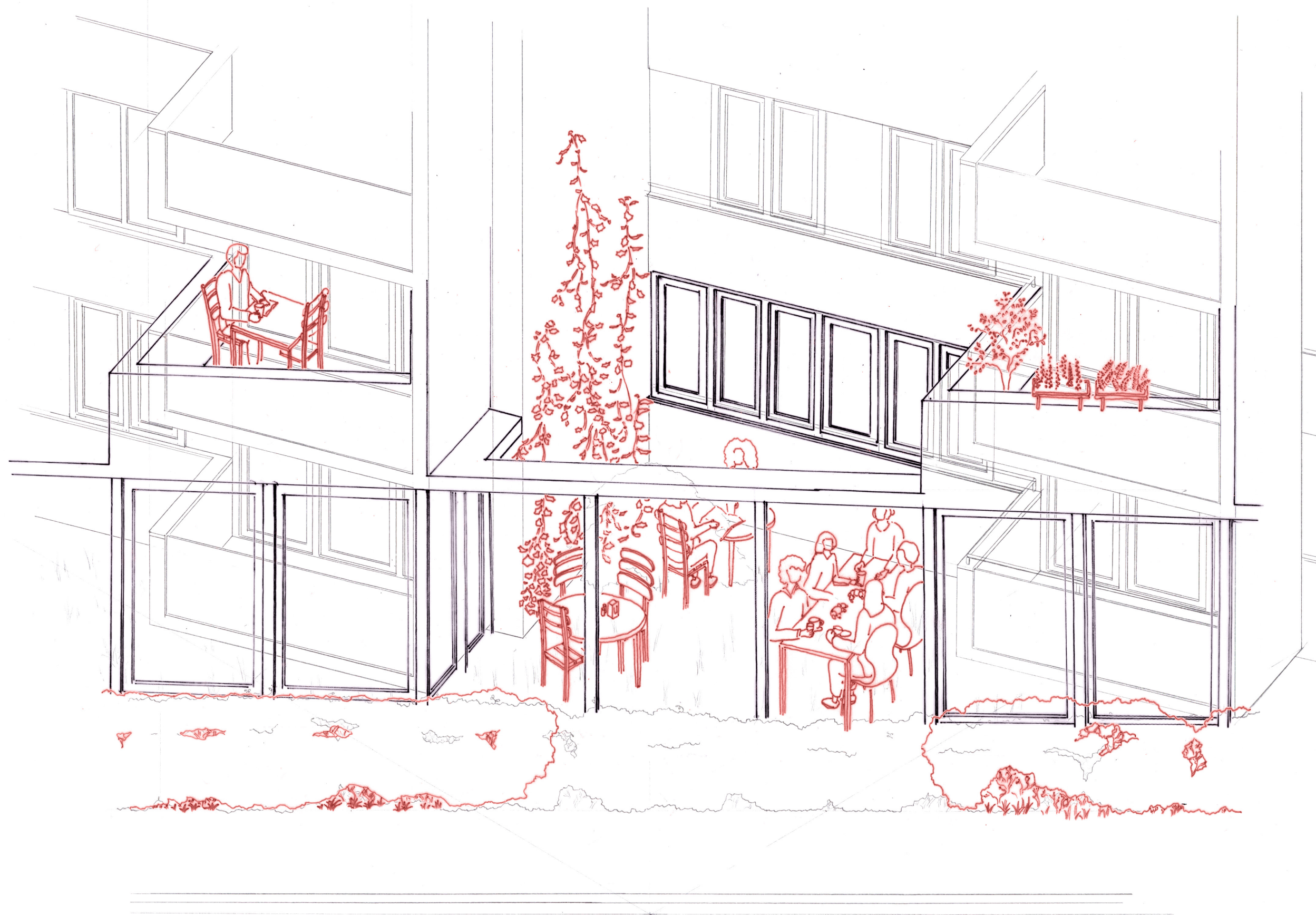
Outdoor space

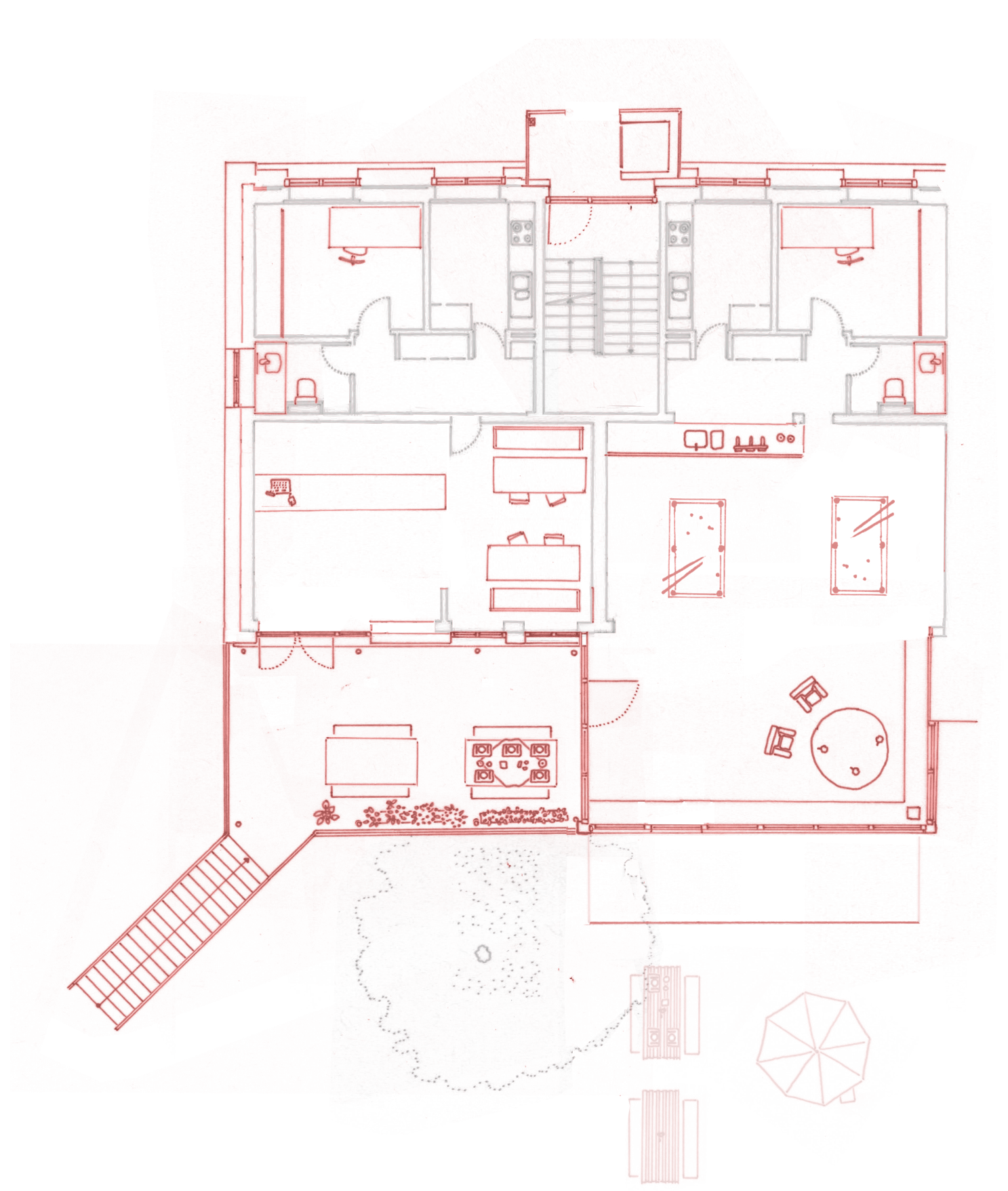
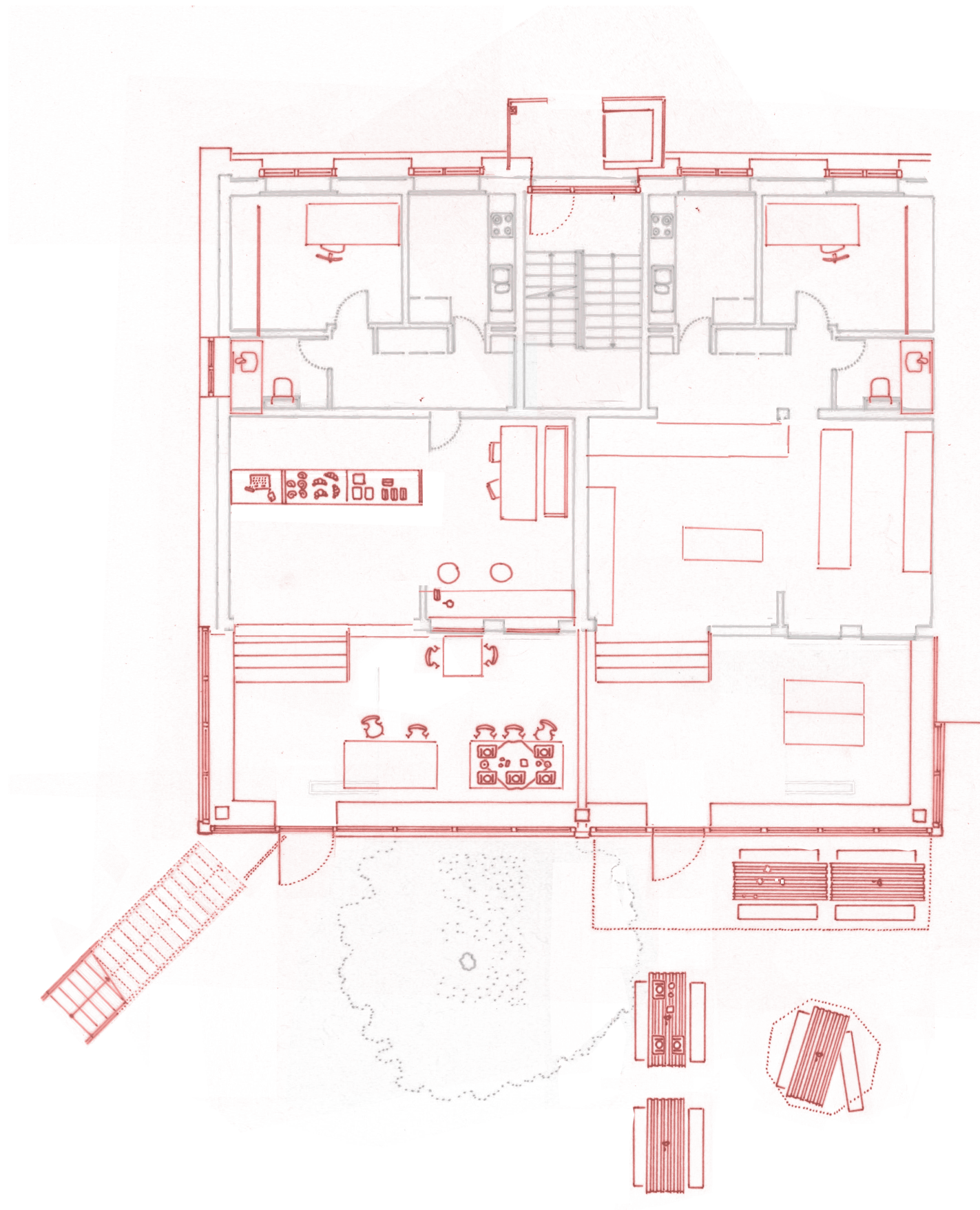
View on the south facade

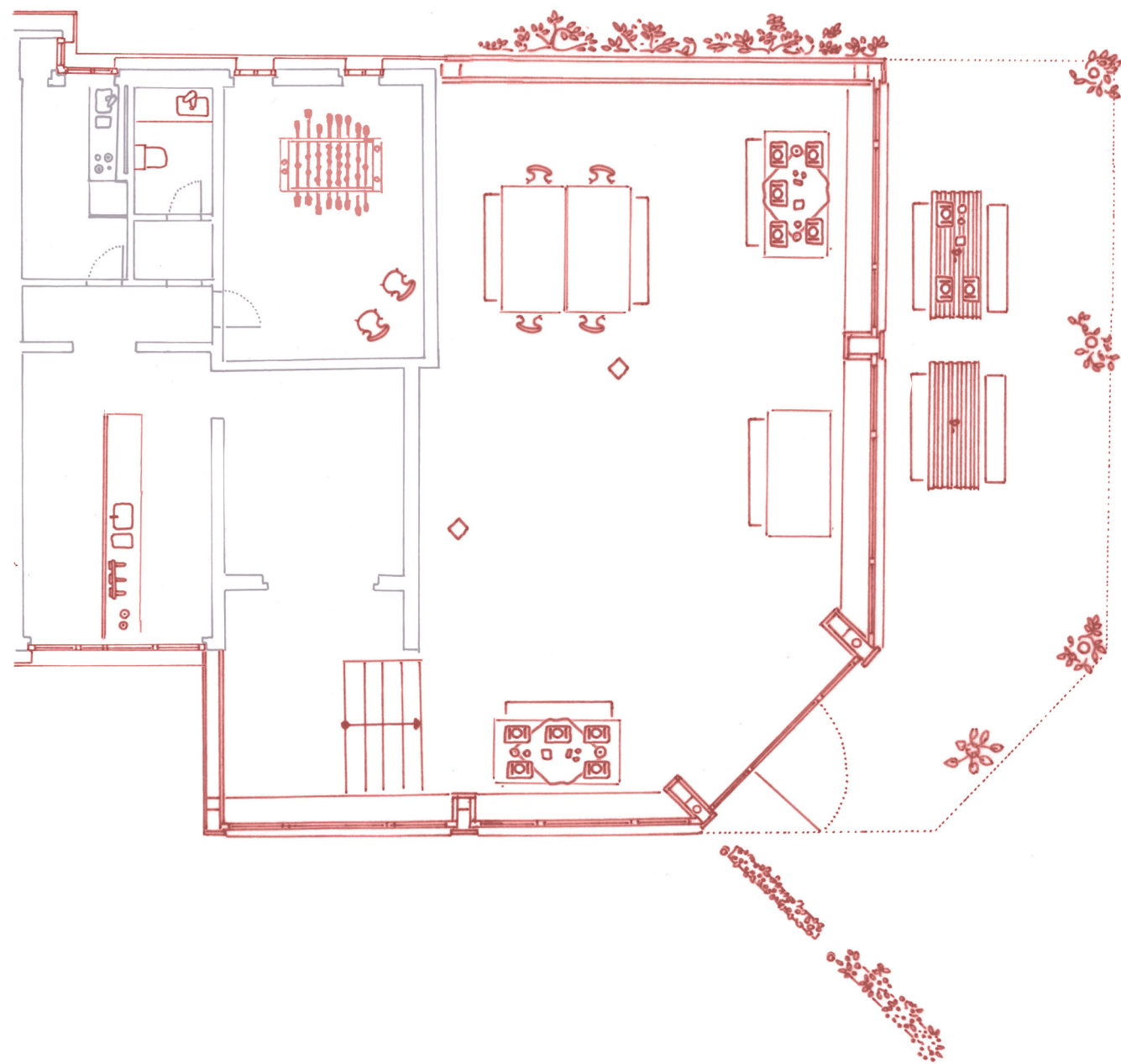
PROMENADE ALONG THE TRIEMLIFUSSWEG - WALK THROUGH ZÜRICH

APARTMENT - GARDEN - STREET - COURTYARD









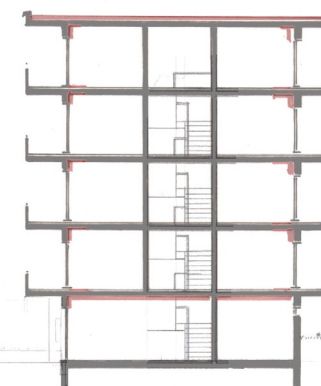
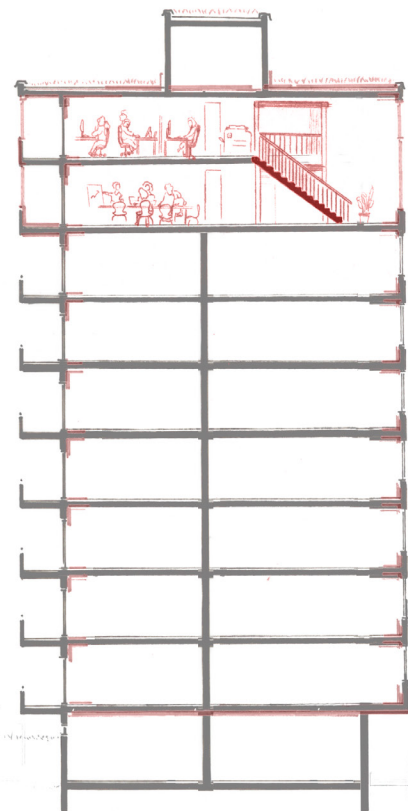


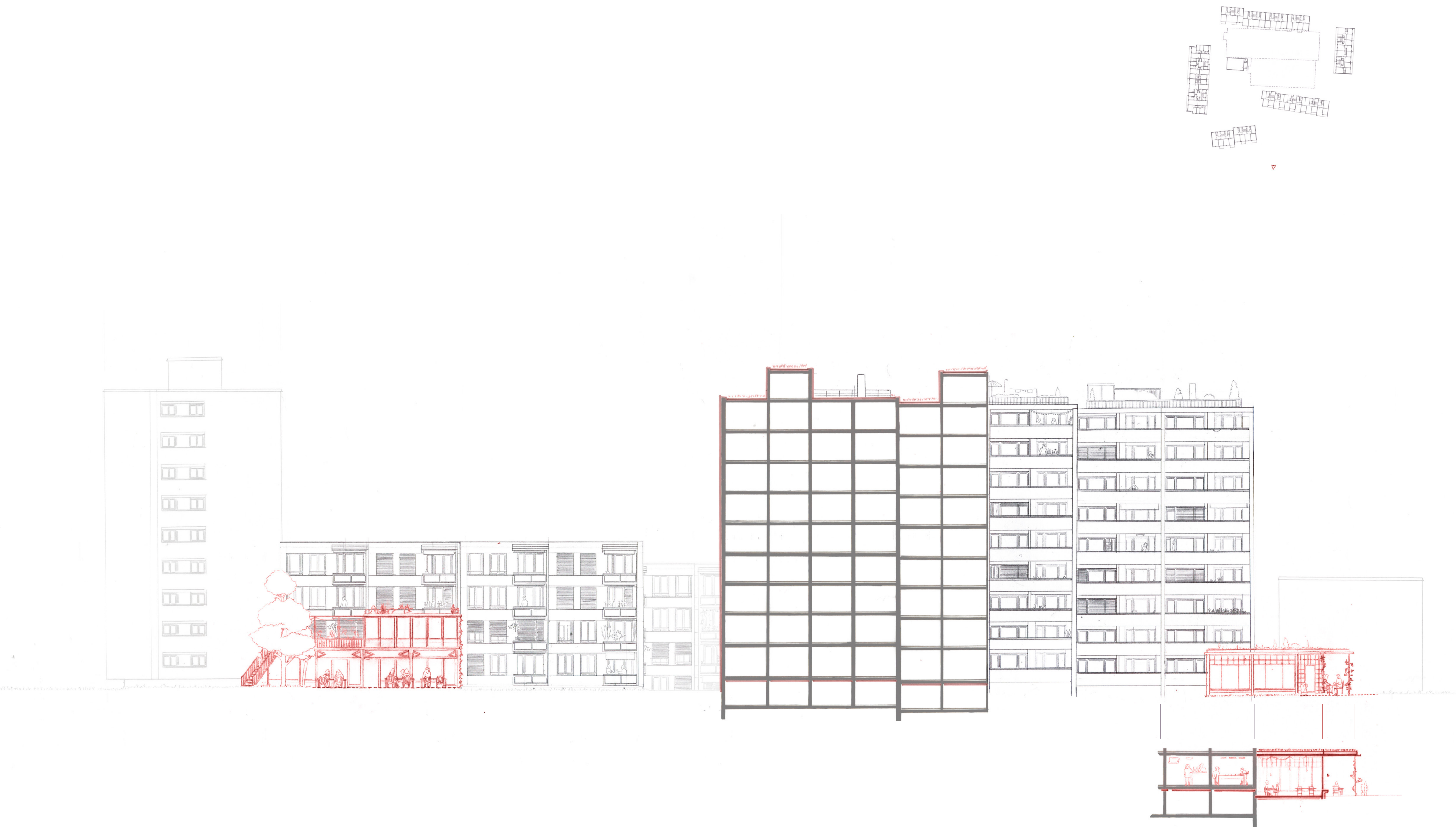
Theme A: Triemlifussweg as Adaptive Infrastructure

Street

Corner coffee shop

View on the south facade



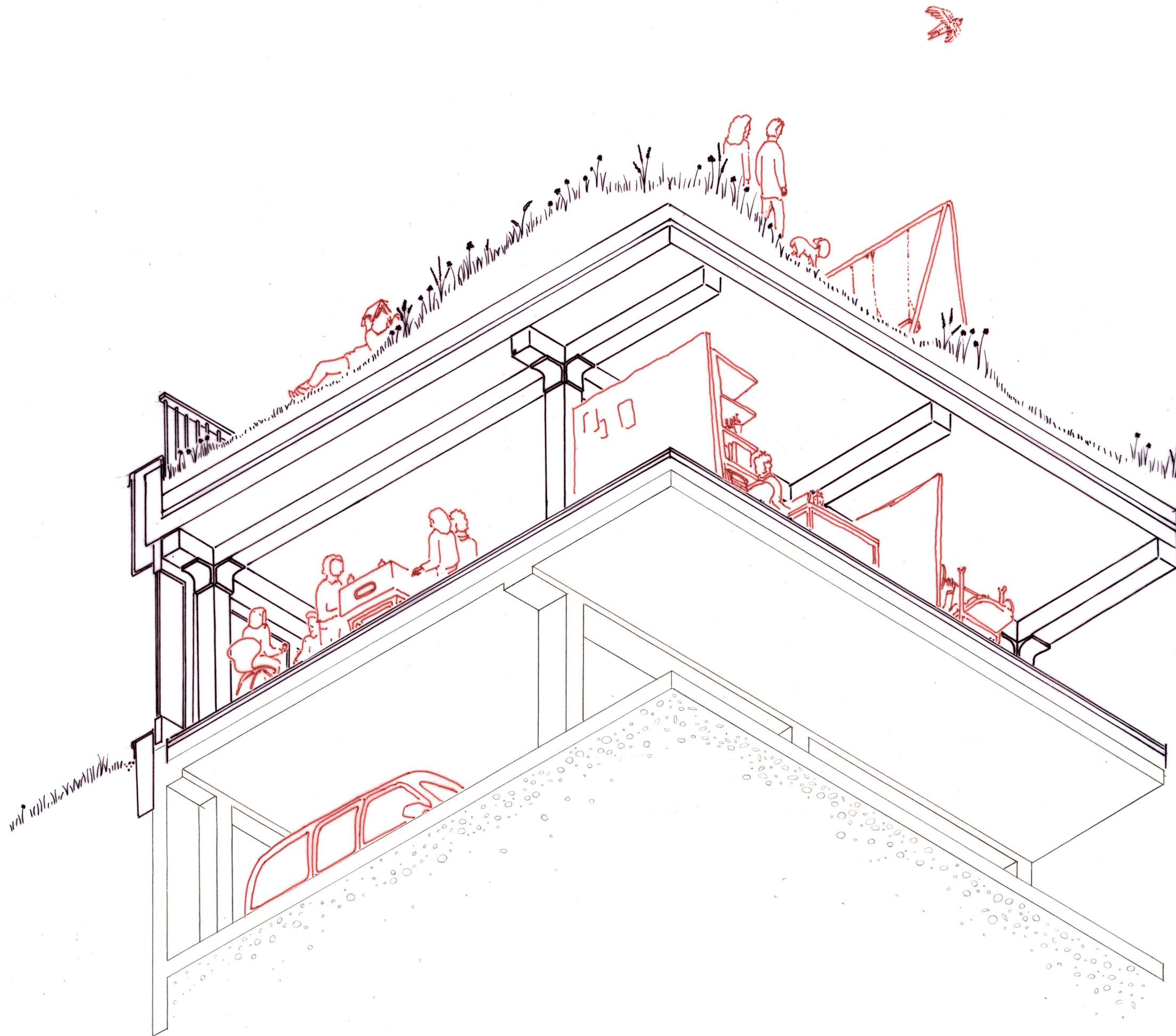


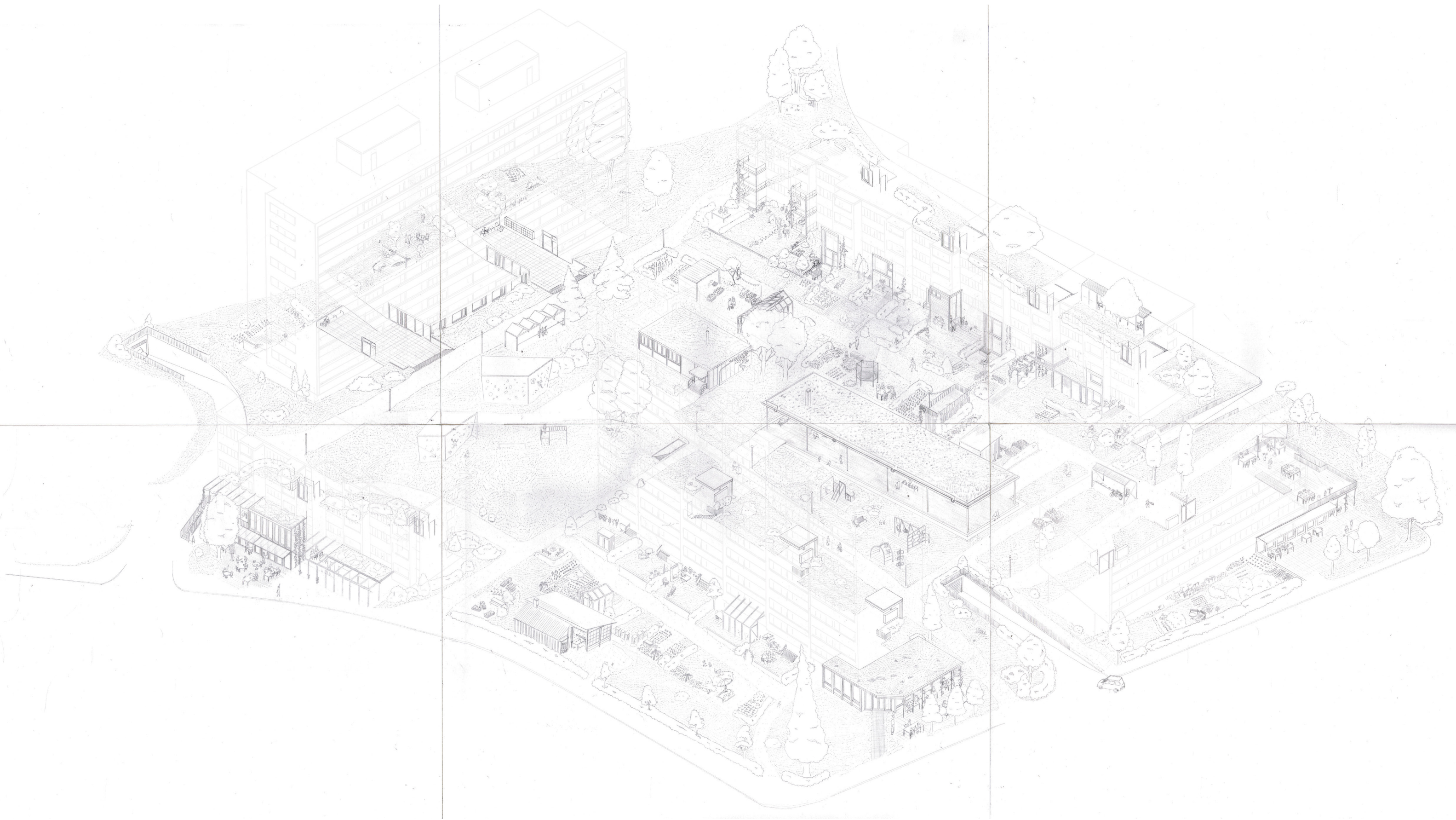


PROMENADE ALONG THE TRIEMLIFUSSWEG - WALK THROUGH ZÜRICH

APARTMENT - GARDEN - STREET - **COURTYARD**









Theme A: Triemlifussweg as Adaptive Infrastructure

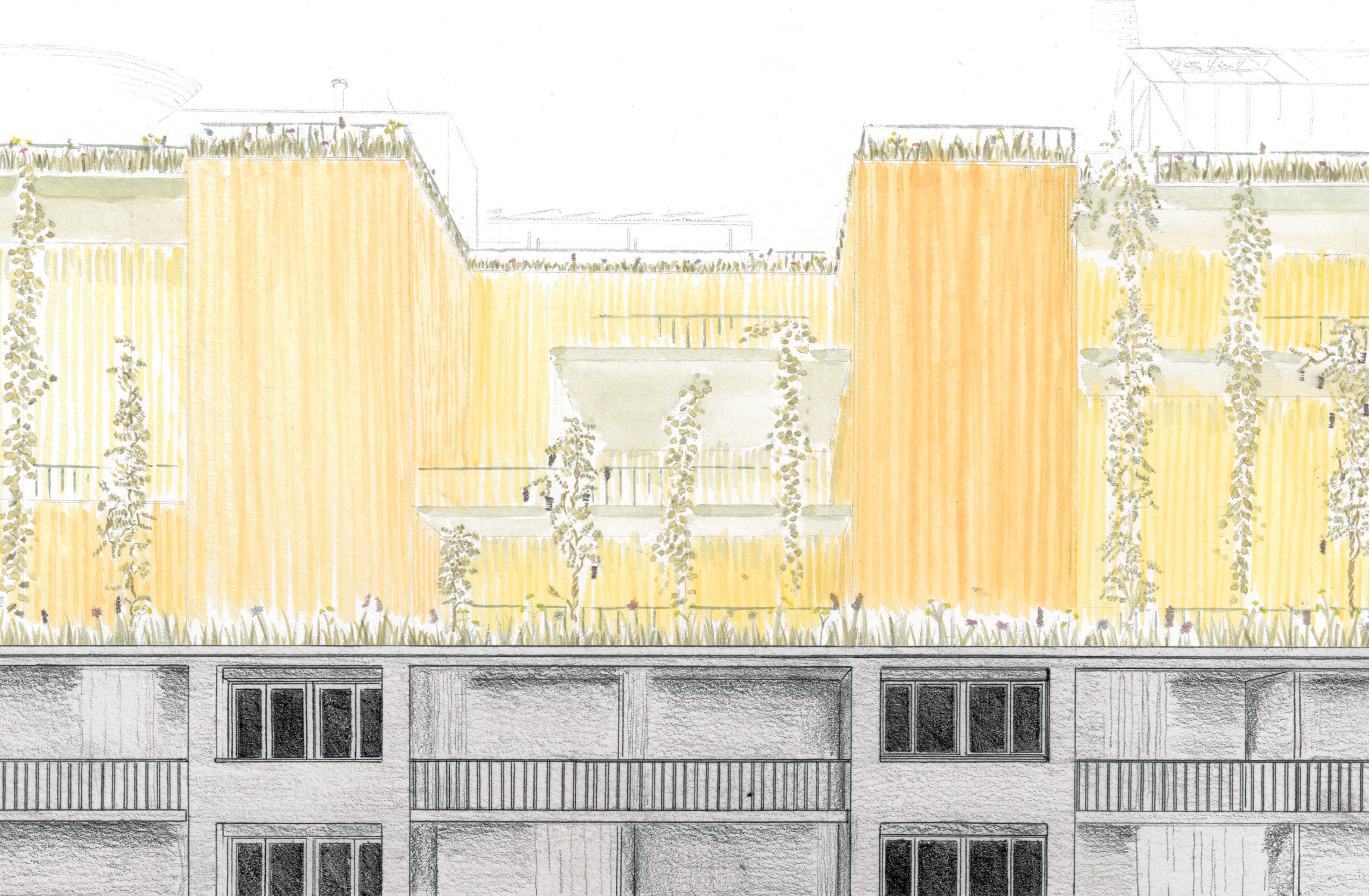
Courtyard

View inside the courtyard

Along the horizontal block, looking West

PROMENADE ALONG THE TRIEMLIFUSSWEG - WALK THROUGH ZÜRICH

APARTMENT - GARDEN - STREET - COURTYARD



Theme A: Triemlifussweg as Adaptive Infrastructure

Apartment - Garden - Street - Courtyard

Densification through additional floors on the vertical building

Suggestion: three floors of apartments



Theme A: Triemlifussweg as Adaptive Infrastructure

Apartment - Garden - Street - Courtyard

Densification through an additional floor on the horizontal building

Suggestion: One floor of villas

