

To build a more sustainable and greener city we need more bicycles and less cars. Yet connectivity spaces for people to cycle, walk, and meet are difficult to find, while cars seem to eat all the available spaces. As new areas are increasingly difficult to find, it is necessary to expand and transform existing structures, making them accessible to non-motorized vehicles. The Bicycle Experience is sending the message that every zone of the city no matter how industrial, can be reinvented and reconquered, made re-accessible to wheel-based movement: be skateboards, bicycles, wheelchairs.

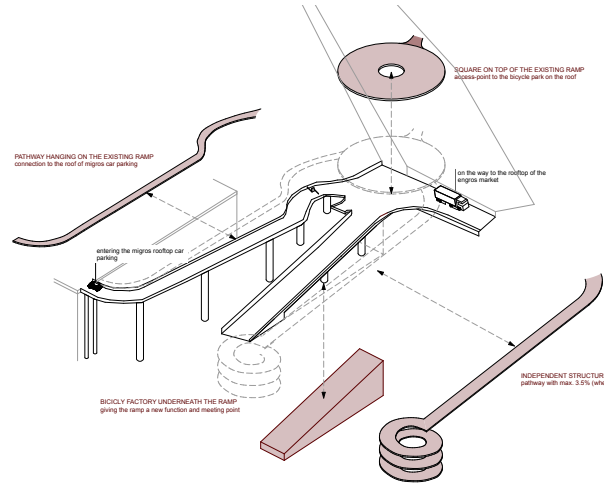
The project poses to transform the eastern side of the Engros market into a new urban ecosystem, the Bicycle Experience, establishing new points for people to practise sports, meet and socialize. The current location is dominated by a heavy and overburdening concrete ramp, which connects the street with the Migros' rooftop parking and the roof of the Engros Market. Despite covering a very large space, the ramp is monopolized by cars during the day and company trucks during the night. The idea is to preserve the current functions of the existing structure, while enhancing its accessibility and usability for pedestrians and bicycles. Under the project, the existing ramp still connects the main street with the rooftops, becoming however the load bearing structure to hang new elements, providing accessibility to new spaces.

More specifically, the entire area could host an urban ecosystem available to the entire citizenry and composed by a Bicycle Factory, an Urban Plaza and a Bicycle Park, with the three elements linked to one another by a new Urban Pathway. On the ground floor, the Bicycle Factory hangs underneath the existing ramp, offering an open workshop where people can build their own bike, or have it built to them. The Factory offers the tools and the space to fix old bicycles and assemble new ones. The Urban Plaza is an elevated and car-free square, a meeting point to enjoy lunch or take a break from cycling. Finally, the Bicycle Park is a new urban garden located on the roof of the south building, a spot currently unused, where bicycle aficionados can bike around, try different terrains, and even compete with one another.

Those three new areas are accessible via a new Urban Pathway, an elegant and swift bridge offering the same dynamism typical of the bicycle experience. The Pathway relies on a hanging structure, whose weight is sustained on one side by the existing ramp, on the other by new pylons. The hanging structure allows the Urban Pathway to connect the various spaces of the project without compromising the capacity of the underneath ramp to link the main road to the rooftops. As a consequence, the same area can be used by cars and trucks, which rely on the concrete ramp, as well as pedestrians and bicycles, who can use the Urban Pathway.

CONCEPT - DESCRIPTION

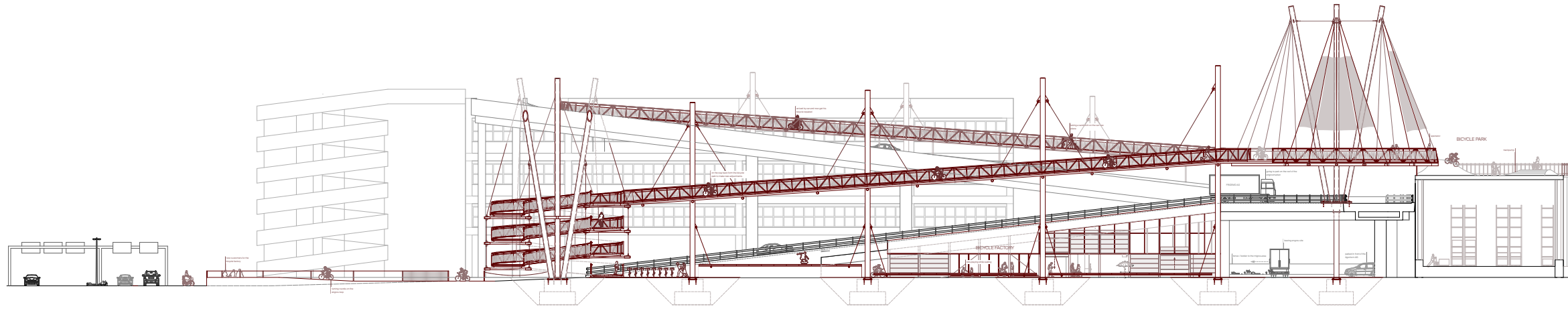
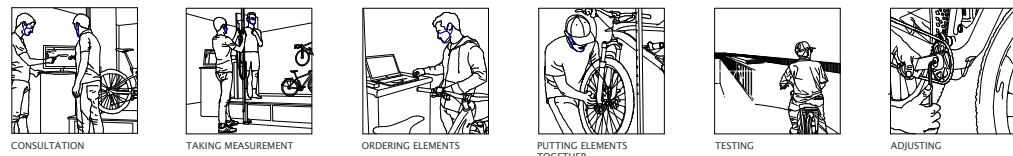
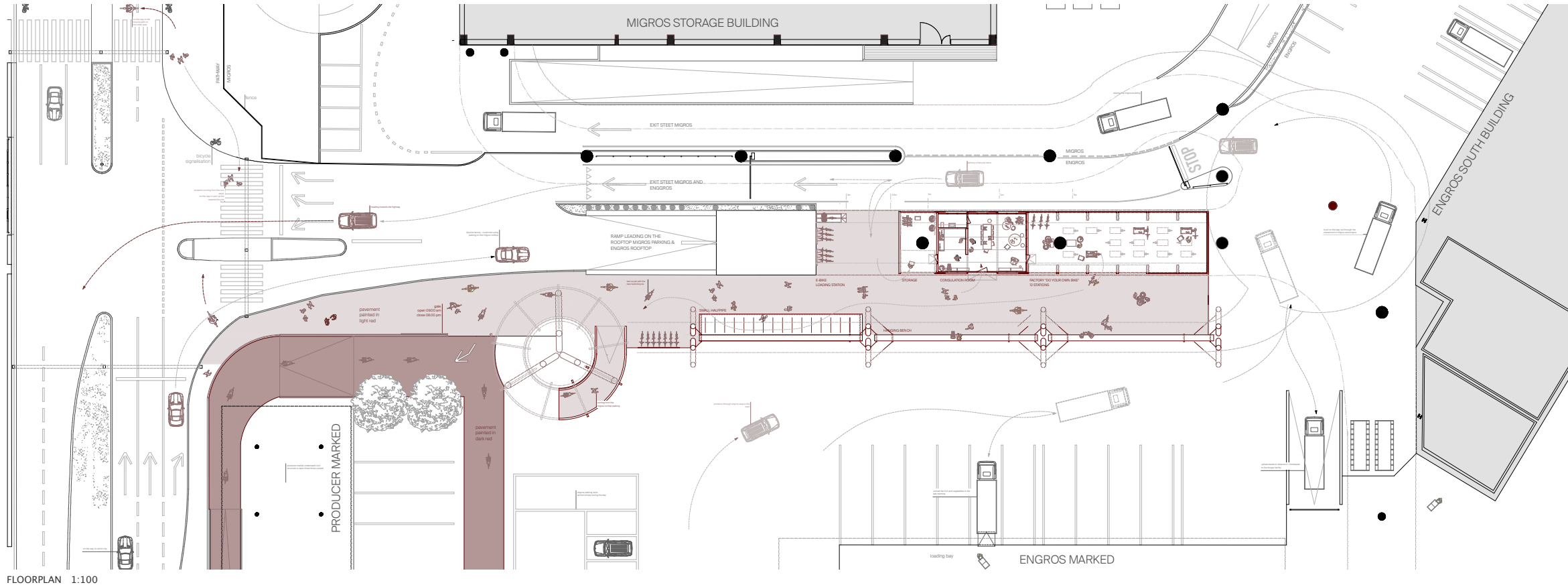
SCHEME - HOW TO EXPAND THE RAMP



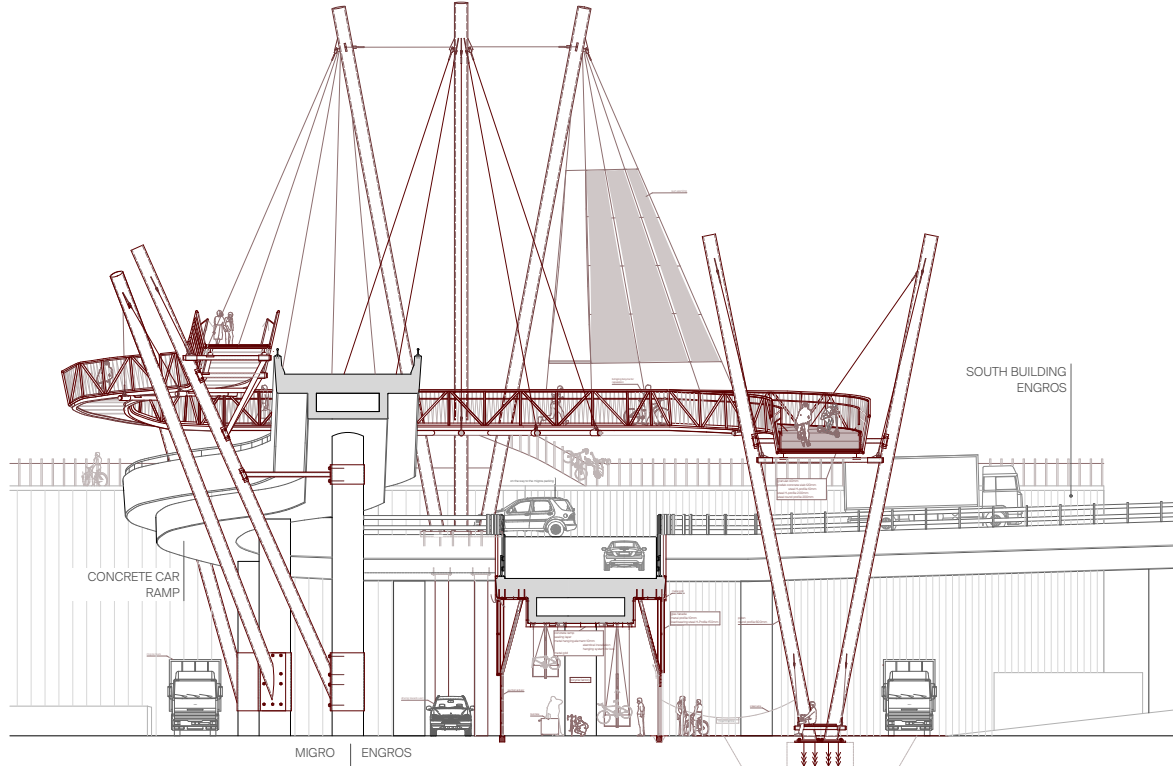
THE BICYCLE EXPERIENCE

Diplomarbeit FS21 / Thema C
Prof. Momoyo Kajima

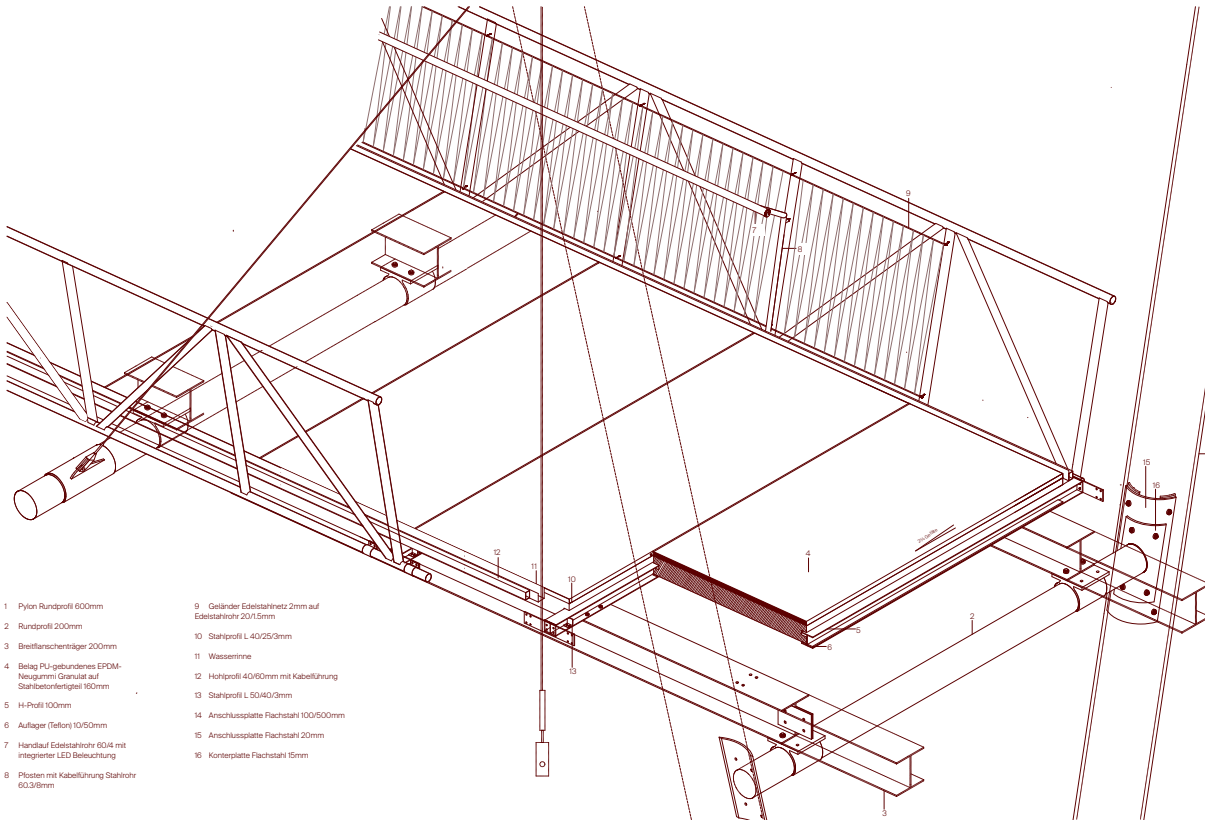
Leandra Krummenacher



ELEVATION 1:100



SECTION 1:50



CONSTRUCTION DETAIL 1:10