



**K** Escherhöhe



**A** graveyard



**B** zoo



**C** forest



**J** Hotel Sorell



**D** boy scouts



**I** Zurichbergstr.



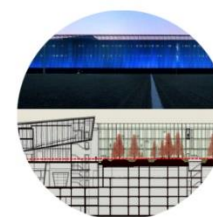
**H** family gardens



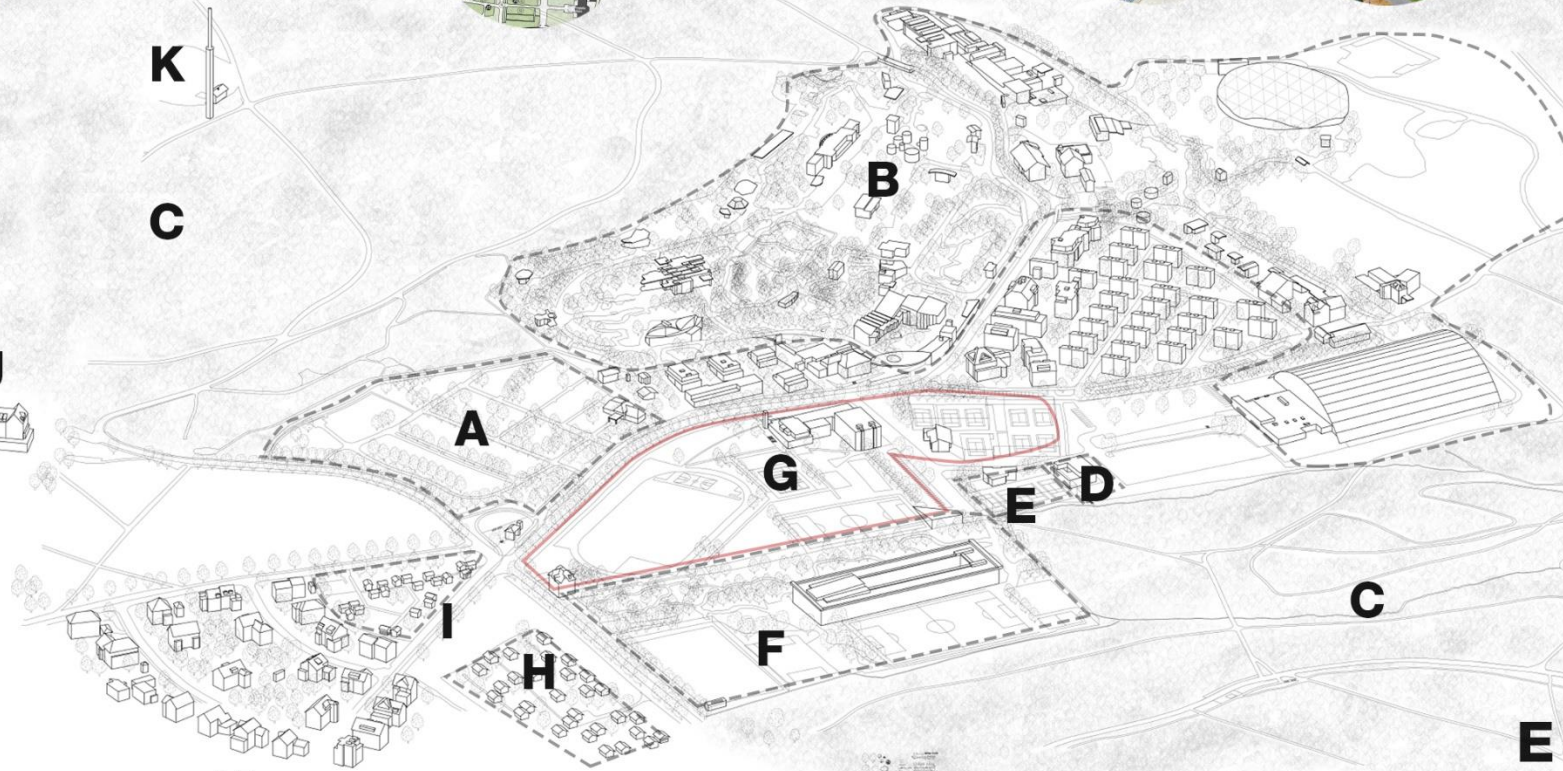
**G** ASVZ



**F** Fifa HQ



**E** tennis club







**SOCIAL COMMON SPIRIT**





HOCHSCHULSPORTANLAGE  
FLUNTERN

Das Betreten dieser Anlage ist nichtberechtigten  
Personen strikte verboten.  
Zuwerhandende werden verweigert.  
Benutzer haben sich auszuweisen.

Universität Zürich  
Rektorat

ETH Zürich  
Schulleitung



REALITY OF THE SITE



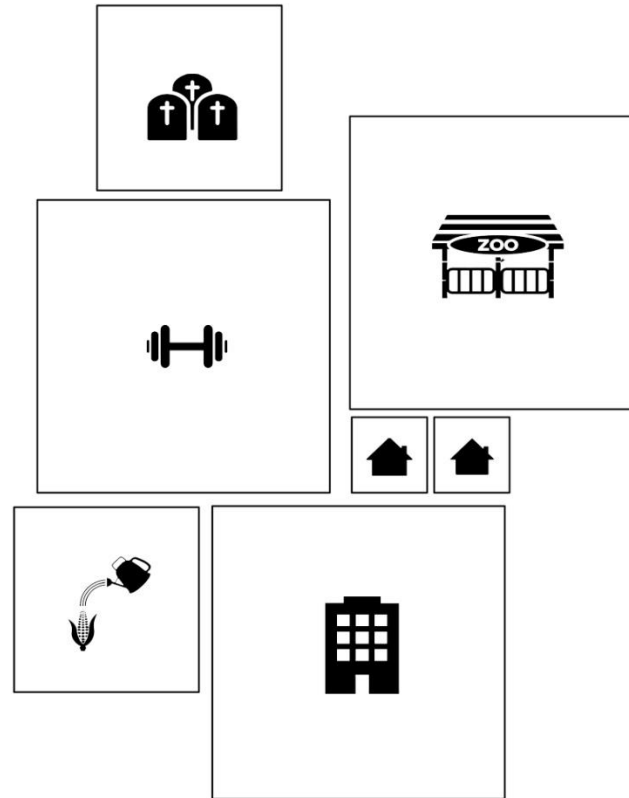
CONCEPT

**MAKE THIS AREA FEEL LIKE ONE**  
**COMMON**



# HOW

**The different actors form  
their bubbles  
(they are club goods mostly)**

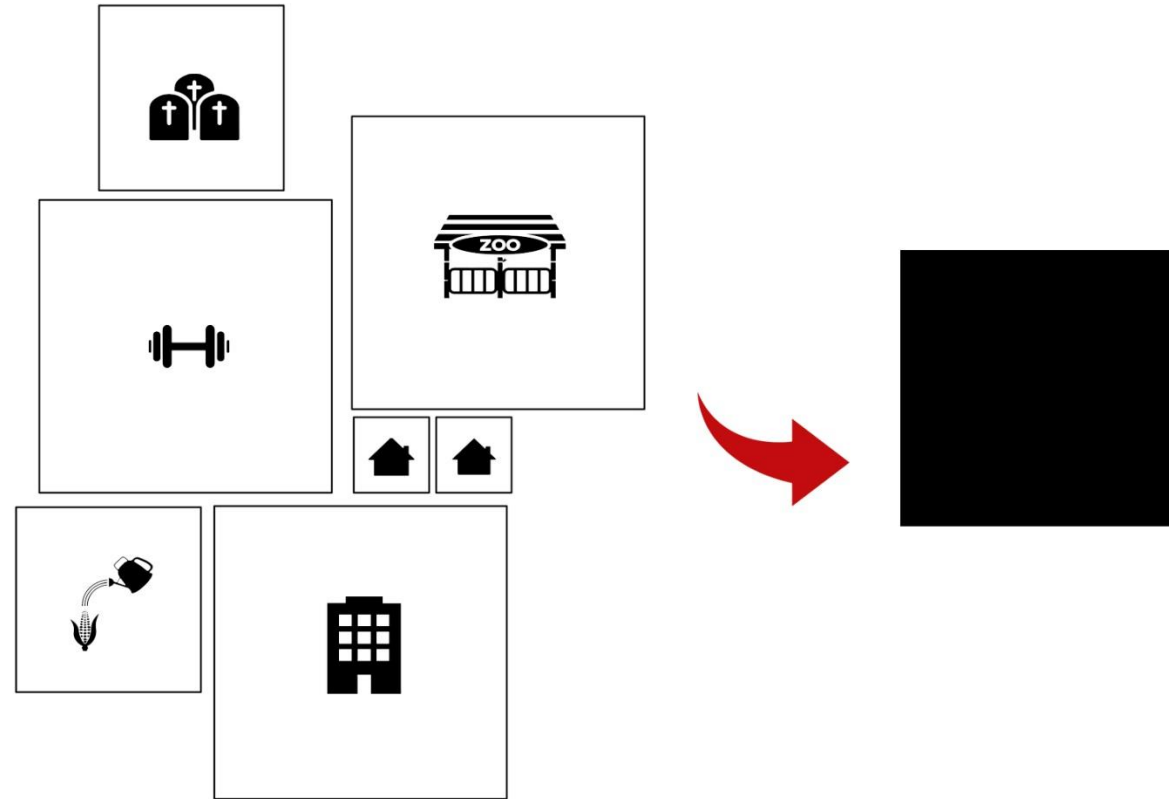


**They are needed and can't be  
opened to everyone**



# HOW

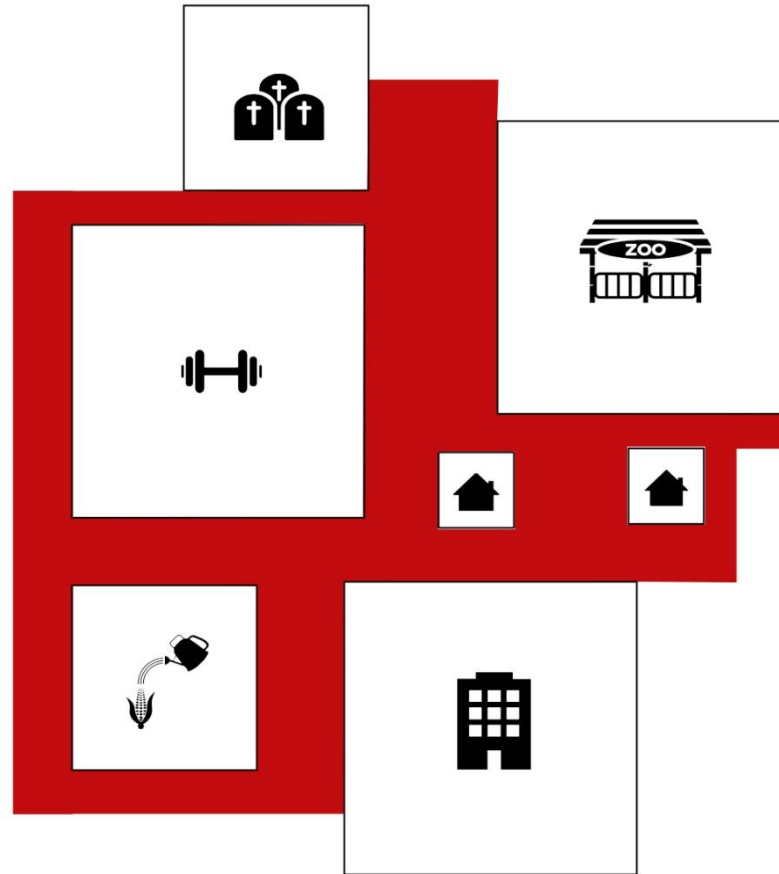
an **additional space**  
is needed to interact  
and meet





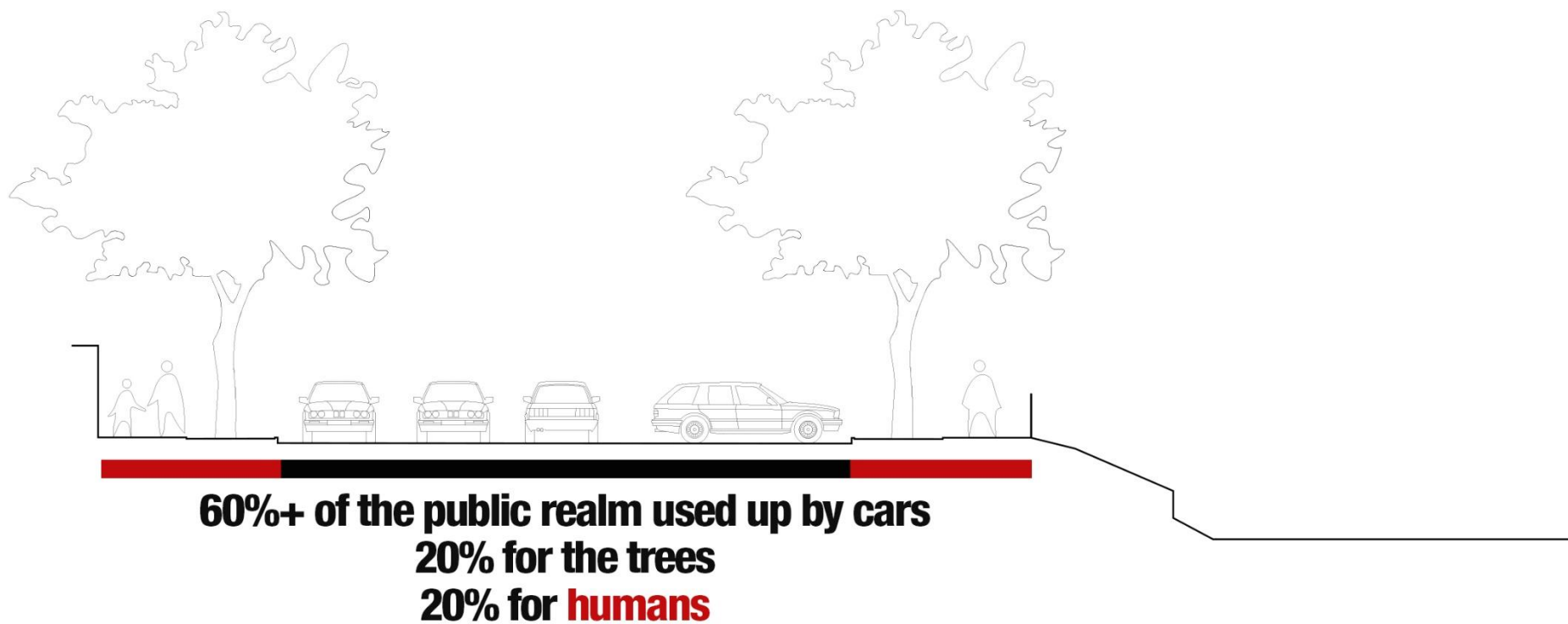
# HOW

maximize and focus on  
the **in between space**  
(public realm)





# HOW



**private good**  
**public realm**



# CONCEPT

stop private goods (cars, car parkings)  
from taking over the **public realm**

re-claim the street as a  
**common pool resource (ground)**

prepare for a  
**car free future**





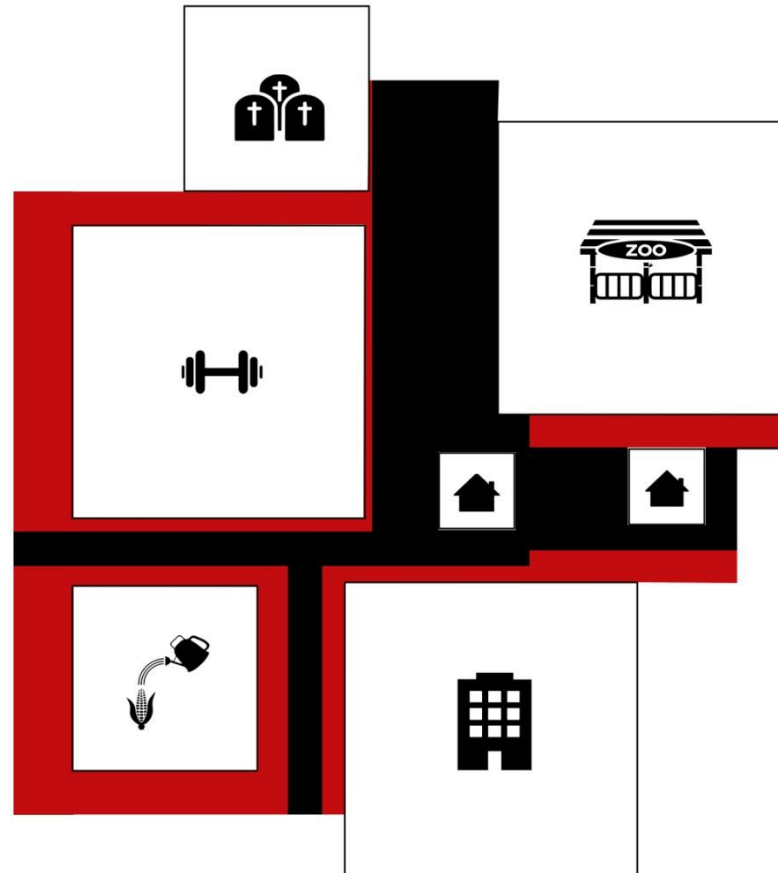
CONCEPT

**BUILD CITIES FOR**  
**HUMANS**  
**NOT FOR CARS**



to tackle the problem in the present...

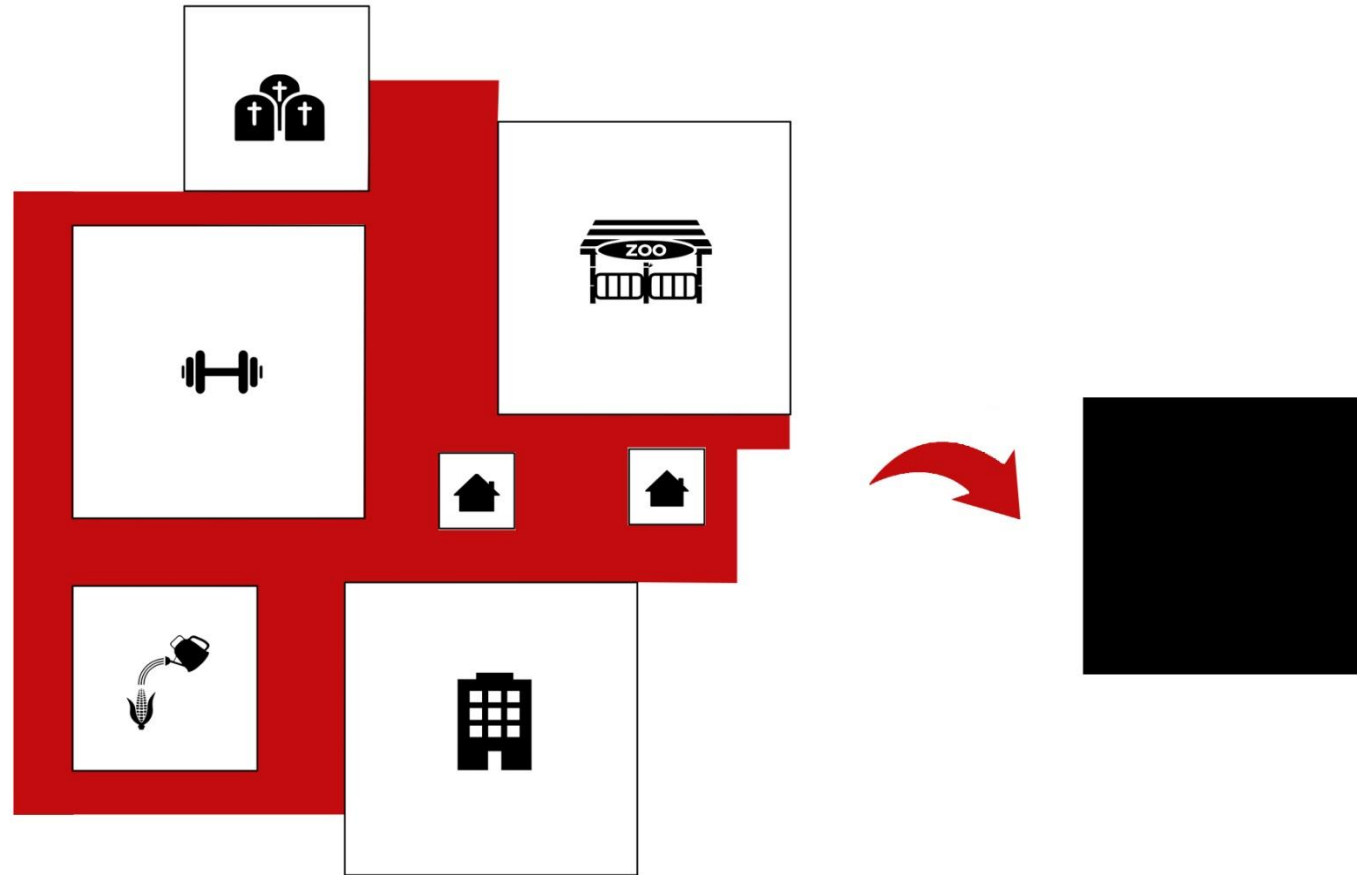
WHAT



we take the car parking...



# WHAT

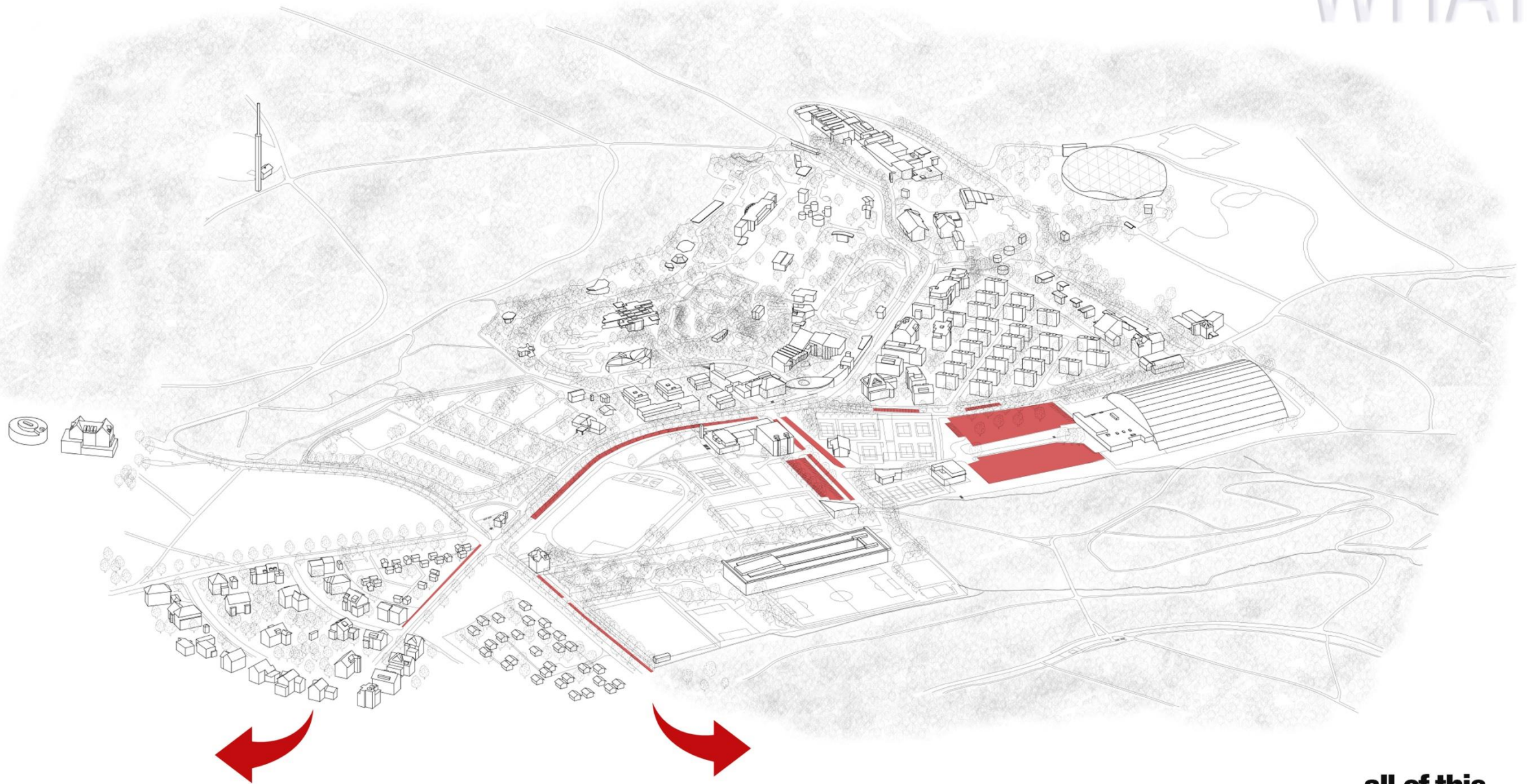


**private good**  
**public realm**

**...and put it in its own enclave**



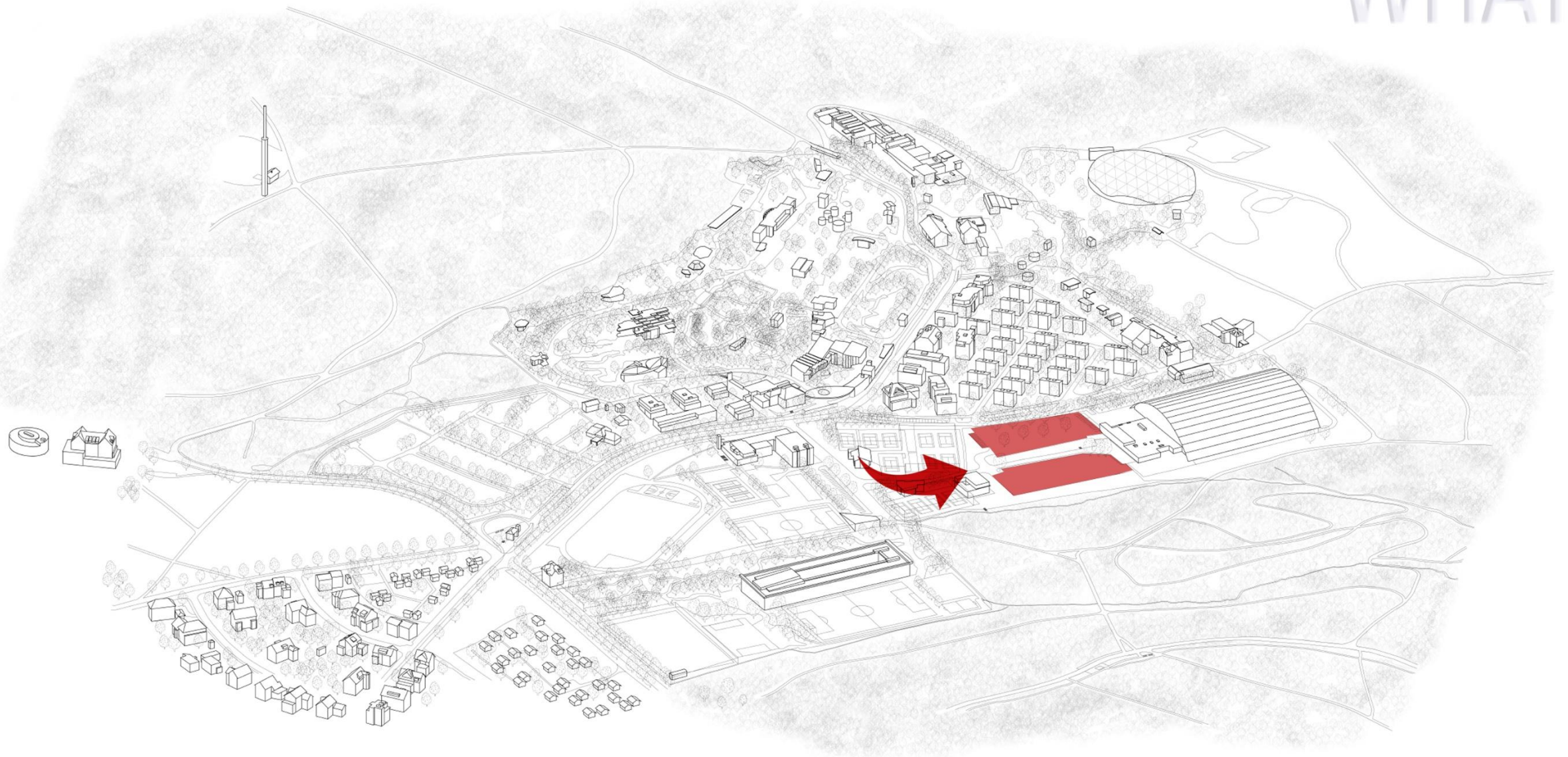
# WHAT



**all of this...**



# WHAT



**goes here**



CONCEPT

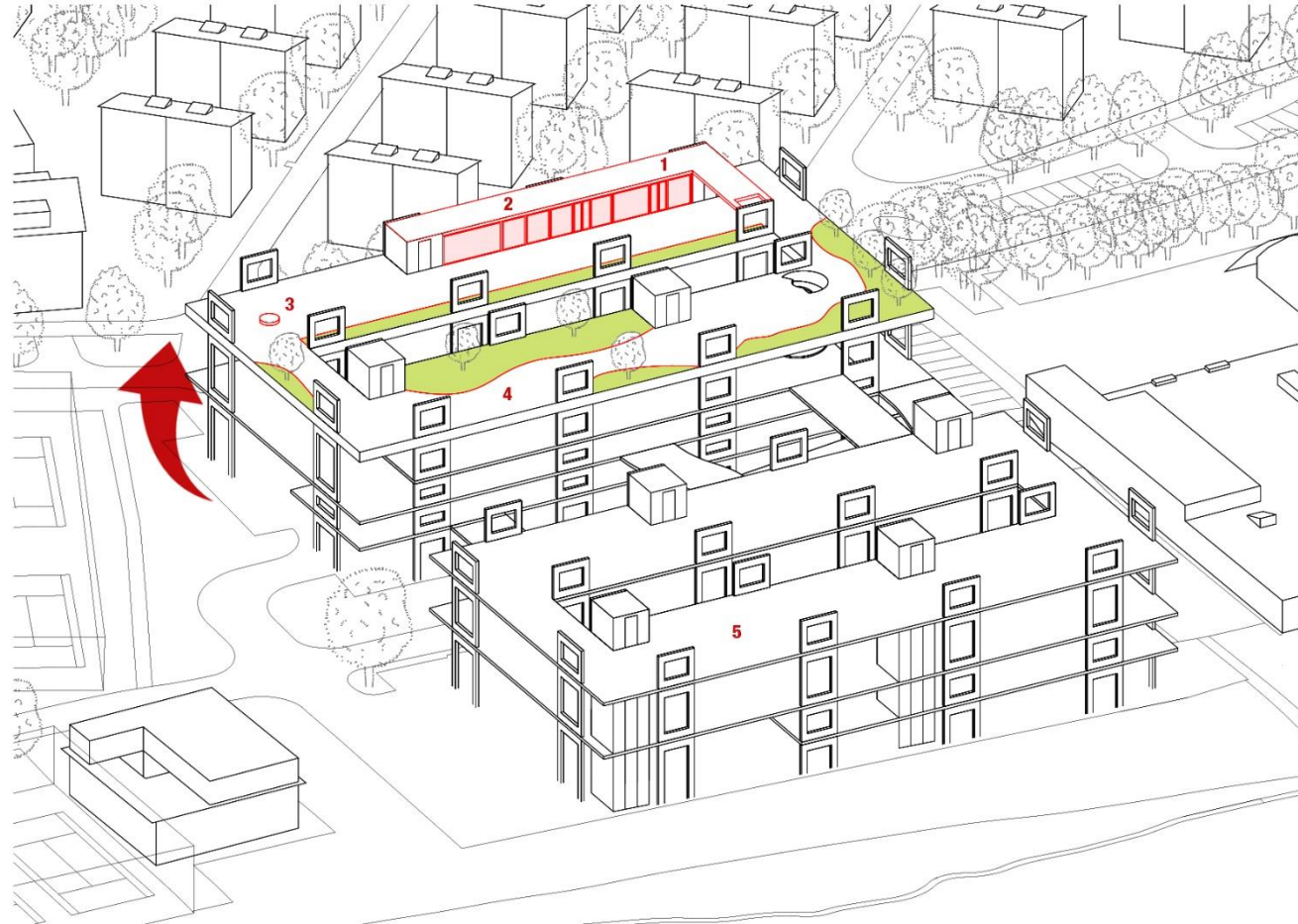
**THE ARCHITECTURE OF THE COMMON  
SHOULD ACCOMMODATE TO THE CHANGING  
NOTIONS OF PUBLIC LIFE**



CONCEPT

**BUILD A STRUCTURE THAT IS  
TEMPORARY USED BY CARS  
AND CAN EASILY BE  
REUSED BY THE COMMON**



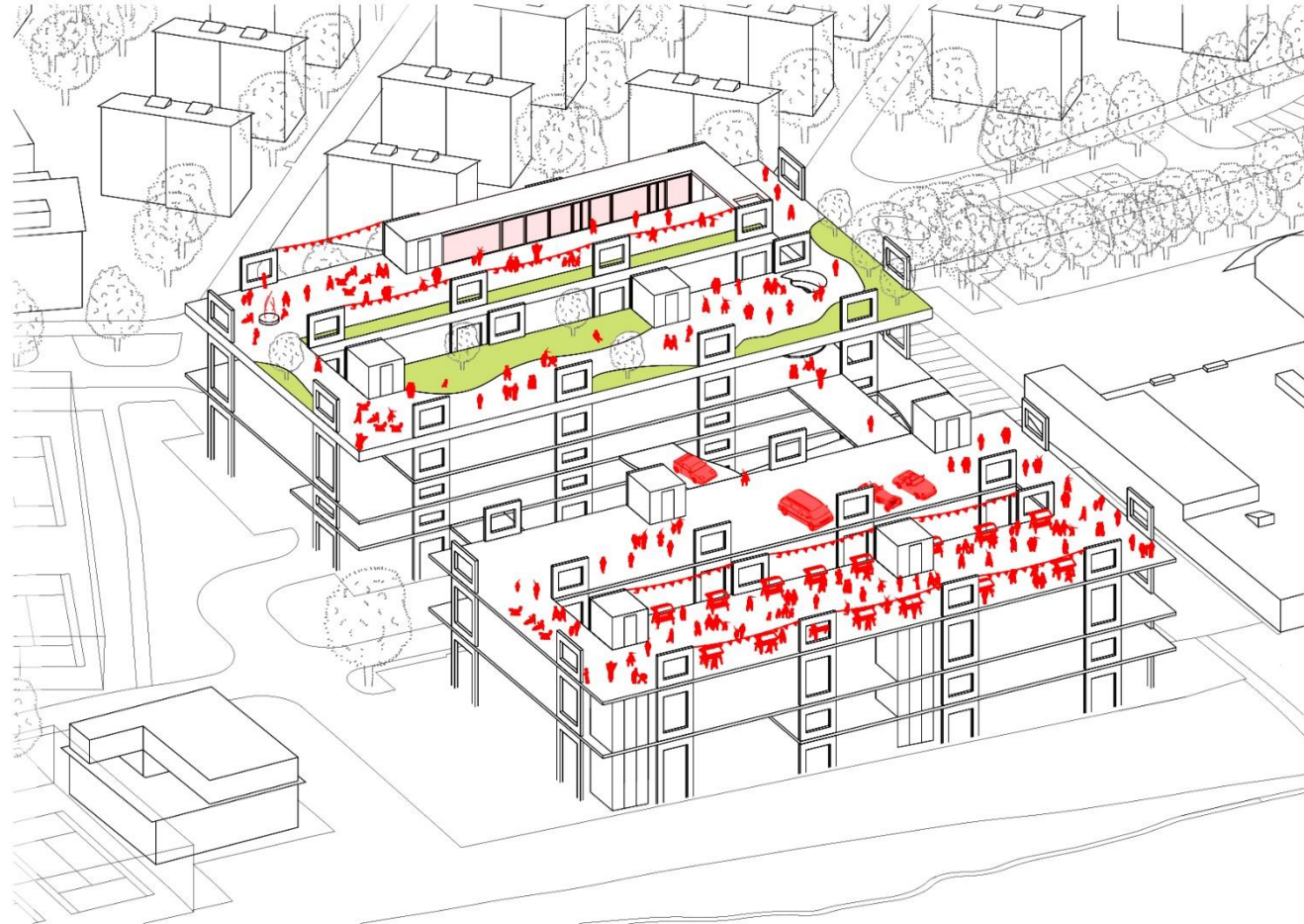


- 1. toilets
- 2. heated indoor
- 3. fireplace
- 4. rooftop park
- 5. market square

public roof gives back the space taken up by cars to humans

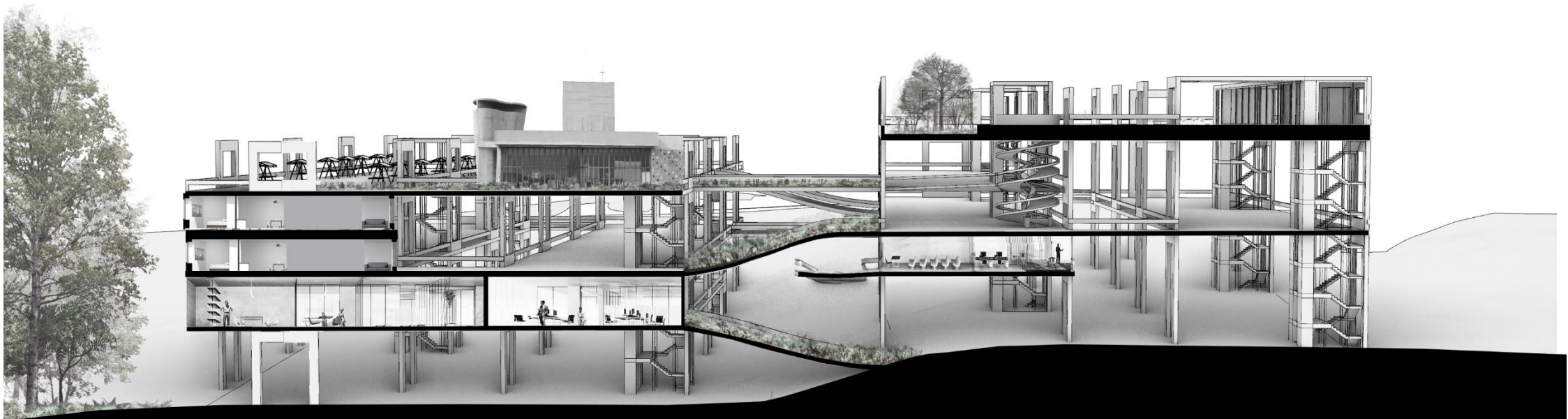
REvolve





REvolve





In the future the cars might go for good. Whatever the **common** needs can be built into or onto the structure.  
The ramps could become streets or extensions of the park.



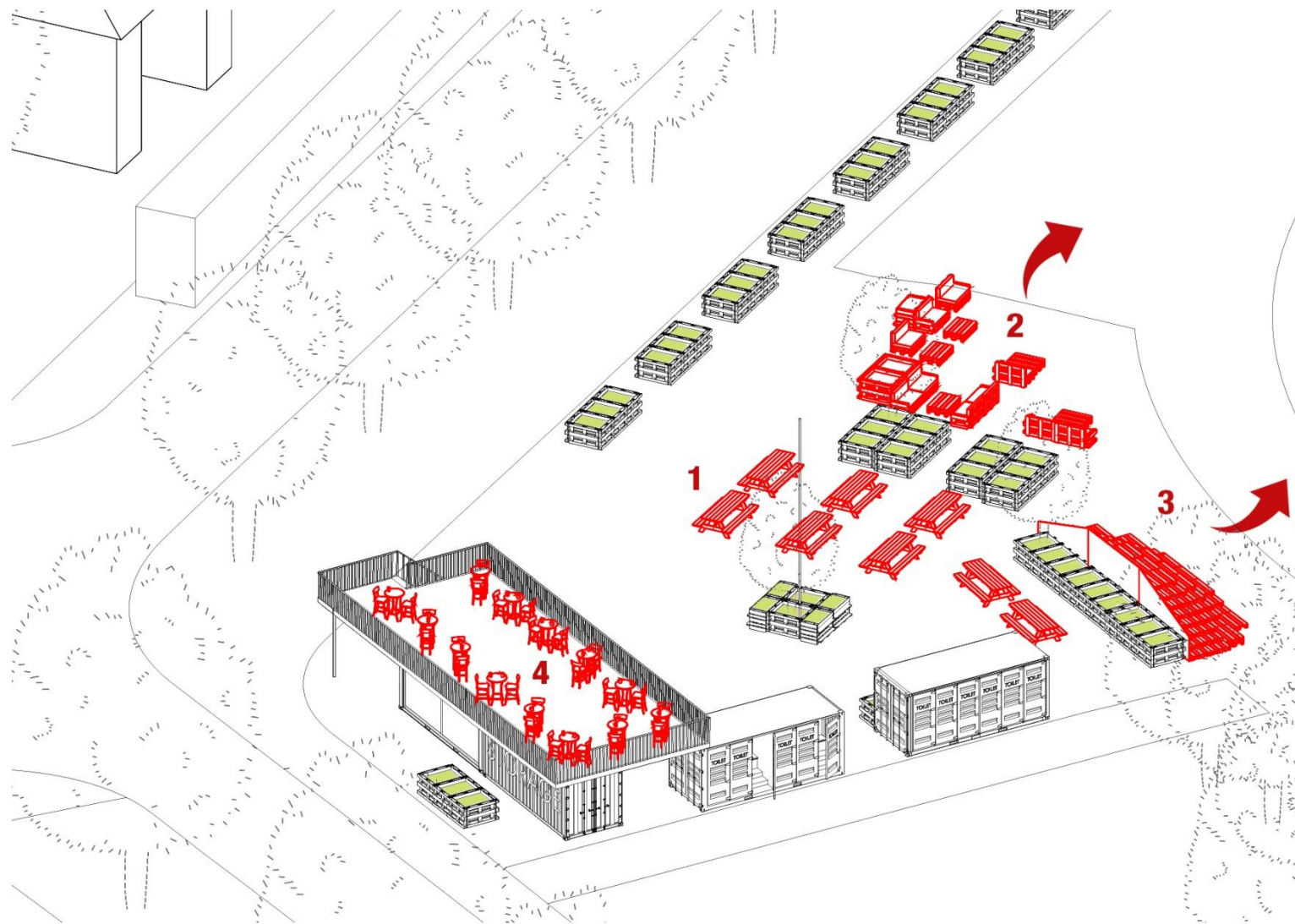
# WHAT



**the car parking is gone and the street is widened along the sport area**

**private good**  
**public realm**

# 2



- 1. tables
- 2. lounge
- 3. watch the sports
- 4. tables

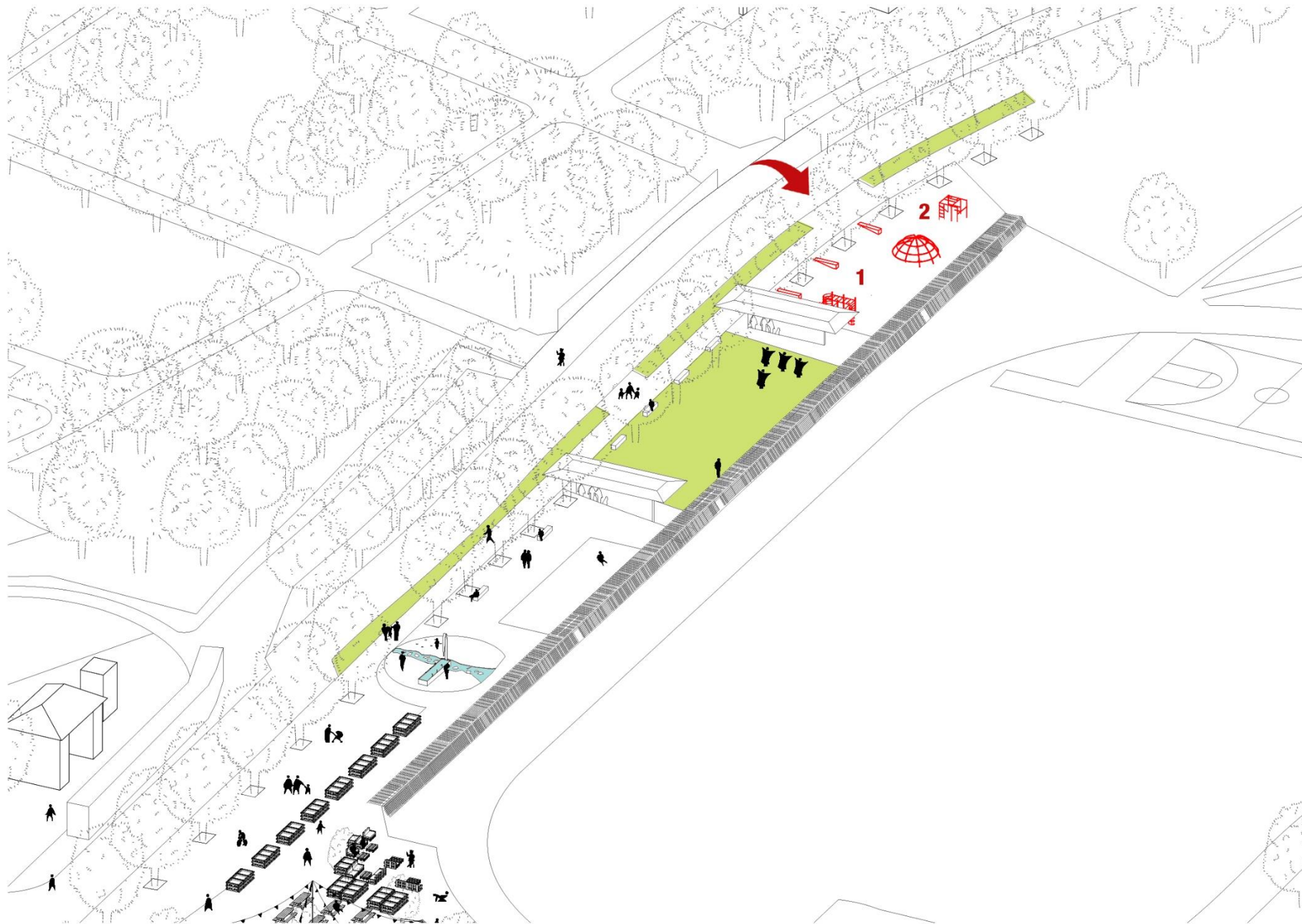
Susis Garten







# WHAT



the playground in the end of  
the axis of the graveyard  
as a celebration of life

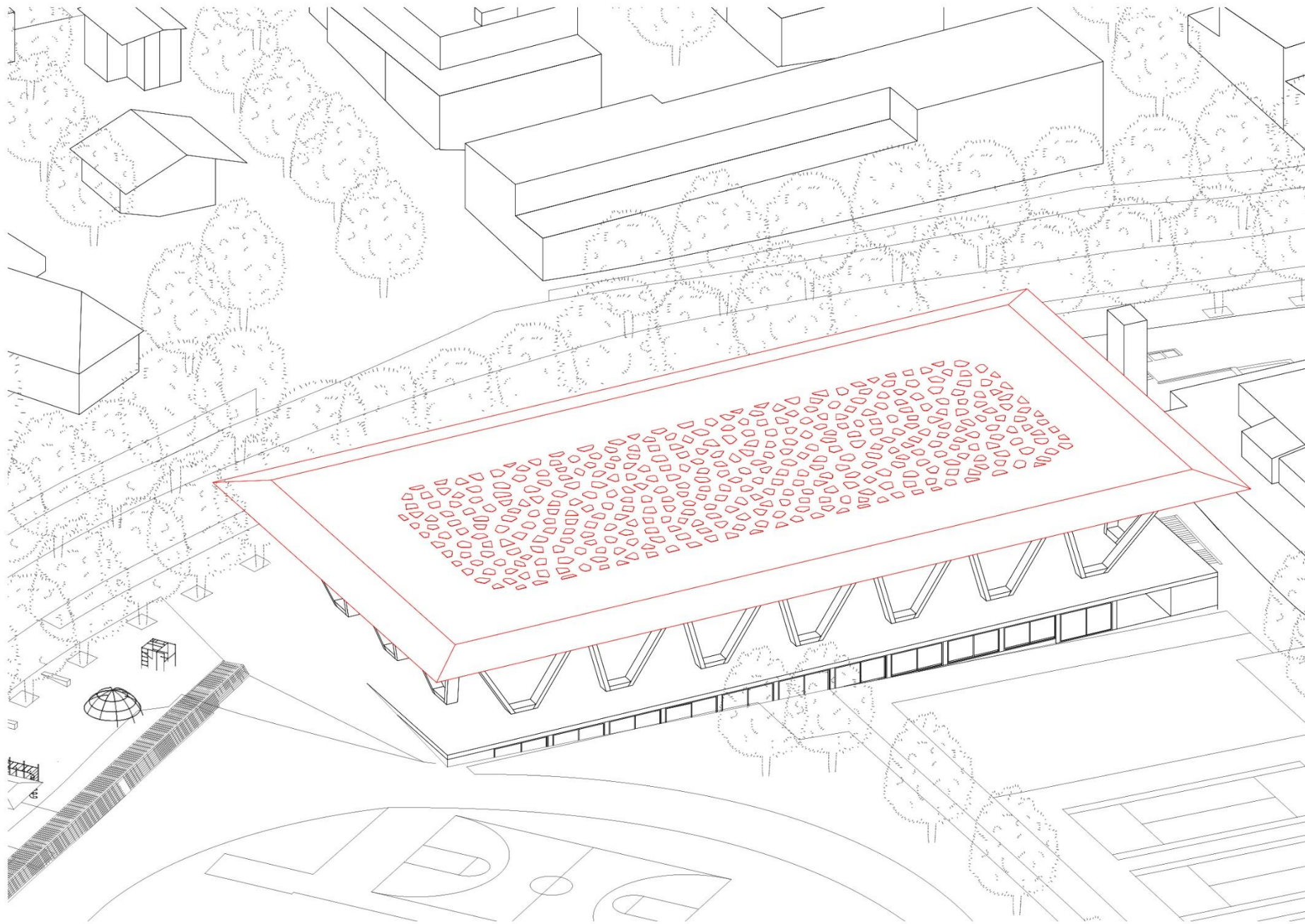
playground

1. playground climbing  
2. outside gym



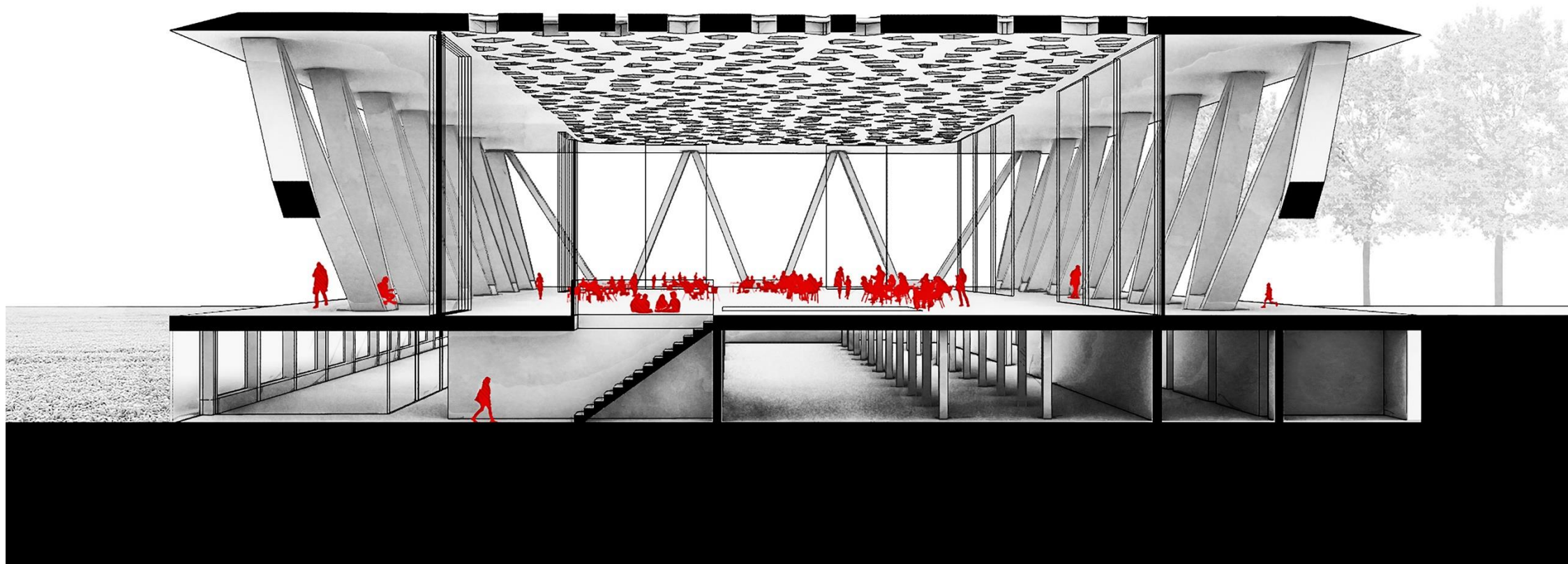


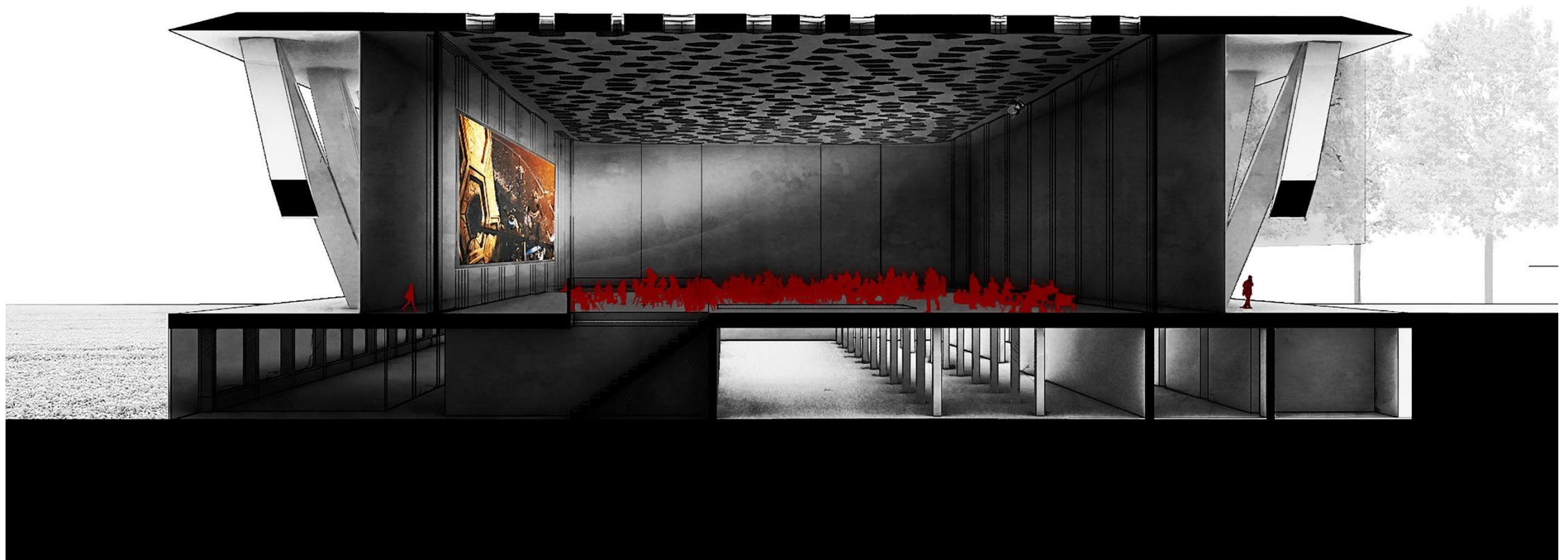




canopy





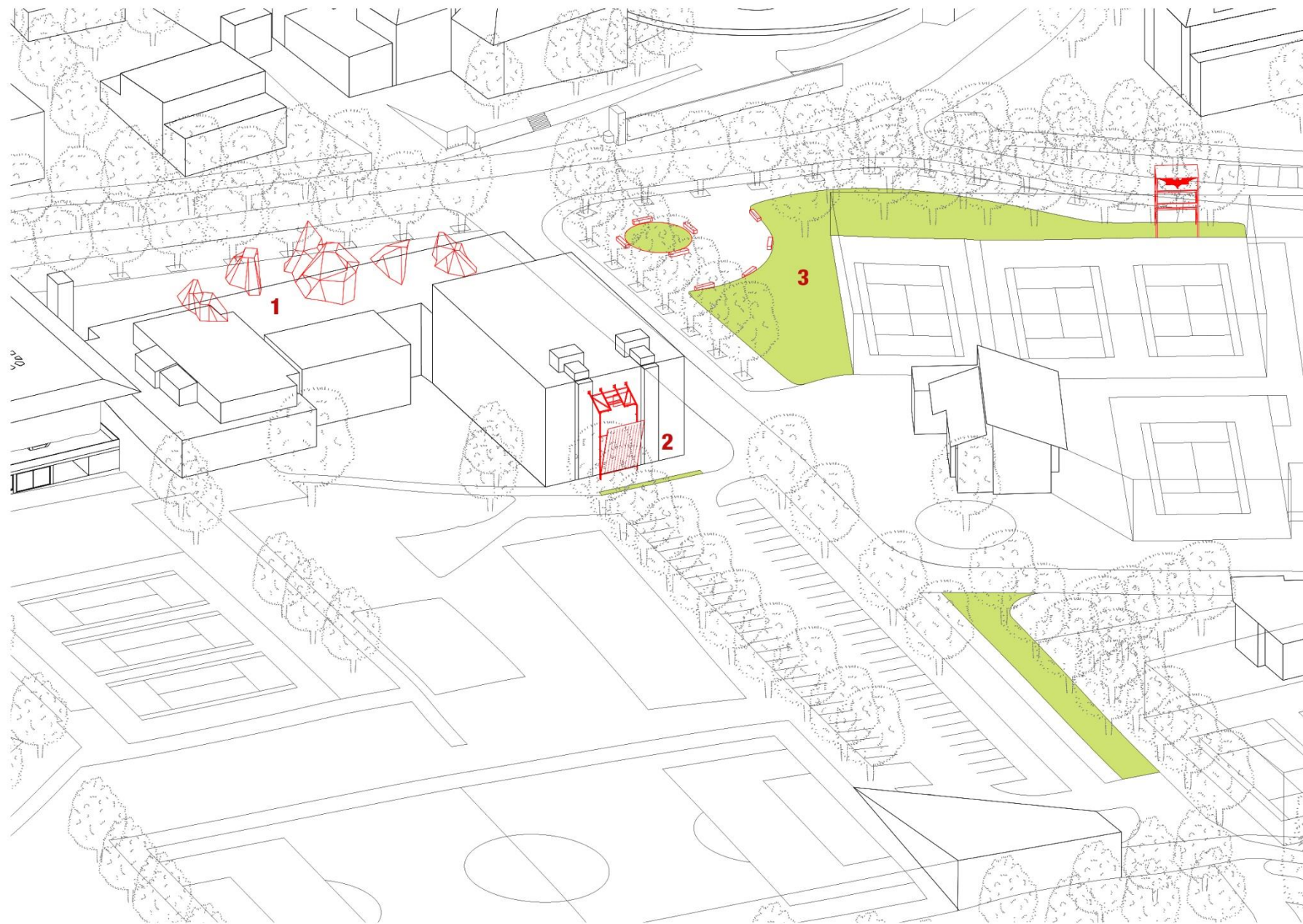








# WHAT



- 1. boulders for climbing
- 2. climbing wall
- 3. bees, bumblebees and bats preserve









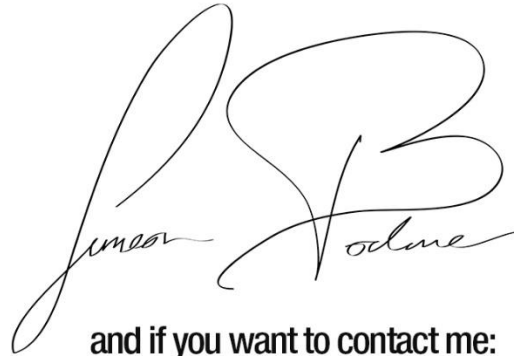


special thanks and hugs to my supporters and mentors:

**Prof. Anne Lacaton  
Michel Eigensatz  
Simon Durand**

**Prof. Christoph Küffer**

**Matthias Wermke**

A handwritten signature in black ink, appearing to read 'Simeon Bodmer', with a large, stylized 'S' and 'B' at the beginning.

and if you want to contact me:



**Simeon Bodmer**  
**@intricaciesofabeautifulmind**  
**[www.bodmer-partner.ch](http://www.bodmer-partner.ch)**