

FINAL REVIEWS
SPRING 2021:
Mon, May 31st
Tue, June 1st
Wed, June 2nd

THE STUDIOHOUSE IN THE CITY

Final Reviews - Design and Construction II - Spring Semester 2021

Prof. Andrea Deplazes | Architecture and Construction | Department of Architecture | ETH Zürich

Information

Contact ETH Zürich
Chair of Architecture and Construction
Prof. Andrea Deplazes
HIL G 47
Stefano-Franscini-Platz 5
8093 Zürich Hönggerberg

www.deplazes.arch.ethz.ch
Phone +41 44 633 7686

Chair Professor: Andrea Deplazes
Senior Assistant: Andrea Waeger
Office: Claudia Nussbaumer

Team Ateliers:

Thierry Aggeler, Urban Blaas, Julia Bohler, Christine Egli, Julian Fischer,
Annika Hoffmann, Lucia Gratz, Daniel Itten, Belinda Langåsdalen, Sandra Lentès, Juan Membrive,
Marceline Ruckstuhl, Korbinian Schneider, Cindy Schwenke, Peter Weeber

Team Lecture:

Christoph Ramisch, Anina Schuster

Modeling and Hybrid Model Making:

Jonathan Benhamu

The Studiohouse in the City

Program At the beginning of the semester, the students practiced dialectical design. As part of a preliminary exercise, they spent four weeks designing a house in which „living“ and „working“ meet dialectically. After a personal analysis of both topics, the students combined their findings into an architectural idea, which they subsequently sharpened and radicalized. In addition to the dialectical idea of the house, the students dealt with the issues of building mass, lighting and open spaces.

In the main exercise, the experiences of the preliminary exercise were applied to a city block in Poblenou, Barcelona. Unlike the neighborhoods near the center, the blocks in Poblenou are not maximally dense. A variety of traces from the past can be found and fractures are visible in various places. Former street courses can be guessed or are still present in various places. Chimneys, large halls as well as empty Brownfields refer to the former industry in today's trendy quarter of Barcelona.

In this heterogeneous context, the students worked on various blocks and developed their idea of living space from the neighborhood to the dialectical idea of the studio house. Starting with the question of contextualization, through the development of a plot structure and addressing, to the question of concrete house typology, open spaces and architectural expression, the idea was specified step by step.

Final Reviews Live-Stream **Monday, May 31st - Wednesday, June 2nd / 9 - 18 Uhr, via Zoom.**

On Monday, 15 final reviews of the ateliers with the assistants and various guests will take place in parallel. You can find more information on the following page.

On Tuesday and Wednesday we will discuss a selection of about 20 works each day. The following architects will discuss the projects together with Andrea Deplazes.

Guest Tuesday **Mónica Rivera**
Guest Wednesday **Pierre de Meuron**
Sofia von Ellrichshausen, Mauricio Pezo

Zoom Link: <https://ethz.zoom.us/j/96966392287>

Schedule Tuesday / Wednesday	Introduction/Group 1	09.00 - 10.45 Uhr
	Break	10.45 - 11.15 Uhr
	Group 2	11.15 - 12.30 Uhr
	Break	12.30 - 13.00 Uhr
	Group 3	13.00 - 14.15 Uhr
	Break	14.15 - 14.45 Uhr
	Group 4	14.45 - 16.00 Uhr
	Break	16.00 - 16.30 Uhr
	Group 5	16.30 - 17.45 Uhr

The studio house

Preliminary Assignment

Assignment

In the first four weeks you will design a house in which you can live and work. You will first question conventions on both activities in order to set your own priorities. You will then integrate your thoughts into the design of the studio house. Imagine that you live in it yourself.

First of all, identify important aspects of living and working in a house, and ask yourself the questions that seem relevant to you. What is most important to you? What do you really need? What can you do without? How would you like to live? Record important thoughts and make sketches.

In a second step, examine the possibilities of combining the two concepts and start to generate an architectural idea. Make your intention more specific by validating the spatial characteristics. What geometry, what dimensions do the rooms have? How do they relate to each other and what is their characteristic?

Work in the section as well as in the floor plan and check the spatial effect of your ideas with the help of physical or digital white models (Weissmodell) or 3D sketches. Make sure that a minimal context, such as a courtyard, a street or a garden, can be derived from the design. The context should be represented in your plans and models as well.

Input 1 Input 2

Drawing, Tues 23rd Feb.2021
Presentation, Tues 09th March 2021

Submission

Mon. 15.03.2021, 12.00, as a PDF on the server and on the white board
labelled with your name, exercise title, studio name to:

Studierendenserver > 01 Austausch mit Professur > 01 Abgaben > 2021_FS > Vorübung
(Ateliername)

All plans you consider necessary for the comprehensibility of your project, scale 1:100 and model pictures (physical or digital white model)
Presentation film, max. 3 minutes.

Final presentation

Mon 15th and Tues 16th March 2021, afternoon

Assessment criteria

- Development of a spatial concept
- Idea generation
- Elaboration / Coherence of content and presentation of entire submission

Monday, May 31st - Final Reviews Ateliers

Atelier Aggeler	Thierry Aggeler / Guest: Marlene Witry Zoom Aggeler
Atelier Blaas	Urban Blaas / Guest: Sebastian Ernst Zoom Blaas
Atelier Bohler	Julia Bohler / Guest: Tom Herre Zoom Bohler
Atelier Egli	Christine Egli / Guest: Daniel Sutovsky Zoom Egli
Atelier Fischer	Julian Fischer / Guest: Sébastien Ressnig Zoom Fischer
Atelier Hoffmann	Annika Hoffmann / Guest: Stephan Schürmann Zoom Hoffmann
Atelier Gratz	Lucia Gratz / Guest: Giulio Bettini Zoom Gratz
Atelier Itten	Daniel Itten / Guest: Lena Stäheli Zoom Itten
Atelier Langåsdaalen	Belinda Langåsdaalen / Guest: Matthew Dalziel Zoom Langåsdaalen
Atelier Lentès	Sandra Lentès / Guest: Lukas Podzuweit Zoom Lentès
Atelier Membrive	Juan Membrive / Guest: Cristina Gamboa Zoom Membrive
Atelier Ruckstuhl	Marceline Ruckstuhl / Guest: Arabella Masson Zoom Ruckstuhl
Atelier Schneider	Korbinian Schneider / Guest: Noémie Ernst-Sénéclauze Zoom Schneider
Atelier Schwenke	Cindy Schwenke / Guest: Ivo Piazza Zoom Schwenke
Atelier Weeber	Peter Weeber / Guest: Ania Tschenett Zoom Weeber

Virtual city walk through the Poblenou, Barcelona

Main Assignment, Part 1

Assignment

Our building site for the semester design project after the seminar week is located in Poblenou, Barcelona. The urban extension designed by Ildefons Cerdà in 1859 consists of a number of square-shaped city blocks arranged right angles and whose bevelled corners form small squares. This urban extension incorporates structures of the previously existing plots and streets. In an individual assignment you will develop a design for one of the urban blocks, working from the scale of the urban quarter to a studio house.

In preparation for the design process, we invite you to take a virtual walk through the Poublenou neighborhood. Start by observing and analysing: what types of outdoor spaces can you find and how do they relate to each other? Analyse the morphology of the buildings in the different blocks: What structure, grain and scale do they have? Can you identify a type of use on the basis of the observed attributes? What does all this say about the character of the neighbourhood?

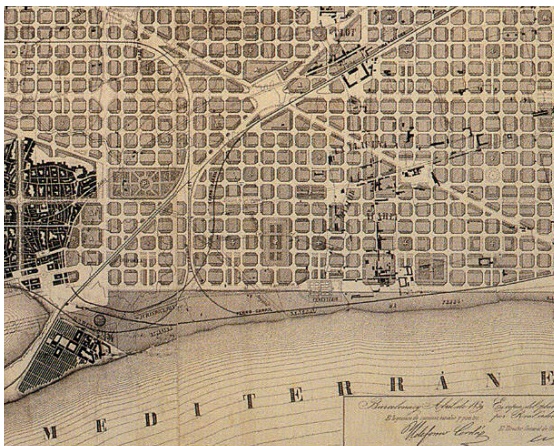
Make notes and sketches to record your discoveries and impressions. Document the spatial characteristics of the existing buildings, the open spaces and the path systems. Did you find any other aspects that are important to you? Choose what you are particularly interested in and investigate further. In doing so, point out the spatial aspects that are of architectural and urban relevance and make two or three expressive sketches.

Input 3

Drawings City Analysis, Mon 29th March 2021

Submission

Please upload your sketches as PDF files to the server and the white board by **Monday evening 29th March 2021**. Student server > 01 Exchange with professorship > 01 Submissions > 2021_FS > Main exercise> studio name



Ildefons Cerdà
City extension plan, Barcelona, 1859

An urban neighbourhood in Poblenou

Main Assignment, Part 2

Assignment

In the coming weeks, you will be designing an urban block in Poblenou, Barcelona. Your proposal will incorporate both the scale of an urban neighbourhood and that of a studio house. At the same time, you will define your conception of what ways of life could be fostered there, how it could feel to live there and how the public and private spaces will be used.

You have already made yourself familiar with the typology of the studio house in the preliminary exercise. This serves as the basis for the design of your neighbourhood, which now takes place in a specific context. You have already got to know the most important features of the Poblenou district in the first stage - the analysis. Now take a closer look at the urban context of your block and its surroundings. Begin to develop an idea for a specific neighbourhood in your block and relate it to the characteristics and qualities of the surrounding city. It is important that this is based on an architectural and urban idea. Which of the properties inspire you? Which urban, spatial qualities would you like to strengthen? Can you establish a good mix of properties within in the neighbourhood and even create a connection to the surrounding blocks?

Use the focal points of your urban analysis for your considerations and play through various scenarios. Consider the structure of the buildings and the open spaces, the urban grain and the scale of your urban planning considerations such as building depths and house sizes.

Designing the ground floor of the city, you must ask yourself the following questions: Where does the transition between public and private take place? Are there any threshold spaces? Does the ground floor accommodate public features and if so, how are they connected to the urban space?

Interim presentation

Mon 26th April 2021, full day

Submission

Mon 26th April 2021, 8.00 a.m., as PDF file on the server and the white board

Student server > 01 Exchange with professorship > 01 Submissions > 2021_FS > Main exercise> studio name

All plans you consider necessary for the comprehensibility of your project, scale 1:200

Assessment criteria

- Pictures of model studies of entire block and immediate surroundings
- City sections and/or ground or city floor plans
- Relevant context analysis (sketch), any scale



Georg Aerni, photographer
Typological study of blocks in Barcelona

Town House

Main Assignment, Part 3

Assignment

On your block in Poblenou, you have designed an urban quarter that follows an overriding architectural idea. You have used the volumetric formulation of your building structure and the combination of your housing units so that the outside spaces are structured and your city floor is formulated in such a way that there is a clear idea of the connection between your quarter and its surroundings. Now start working on your idea of the studio houses and develop it further on the inside (choose one of them, as a prototype).

By now you have probably developed an idea about the kind of people you have designed your neighbourhood for and how they will live there. We are looking for a mixed-use part of the city where people can live, work and dwell, and where different lifestyles and phases of life coexist. The private individual as well as communities and the public can be found there. Think about the social density of the neighbourhood and define the necessary spaces for it, both in the studio house and in the urban space.

What is a studio house? We have already discussed this question intensively in the preliminary assignment. Again, it is about the combination of living and working. Develop its concrete spatial characteristics and think about the geometry and the dimensions of the rooms. What is their relationship to each other and what are their inherent qualities? How do you define a housing unit or a group of houses and what is the spatial relationship to the neighbourhood?

As well as all of these questions you will have to think about the construction method as well. What are your studio houses made of? What is the relationship between the construction and the spatial proportions, between materiality and lighting? How exactly do you use the construction method to create a spatially coherent character? The façade as a face to the city is part of this design step.

Input 4

Submission Format Mon 10th May 2021

Final Submission

Fri. 21st May 2021, 1 p.m. one PDF file on the server and the white board

Student server > 01 Exchange with professorship > 01 Submission > 2021_FS > Main exercise > studio name

In the week leading up to the final critique, prepare your presentation as a film. This will graphically enhance your spoken text

Assessment criteria

- Development of a specific idea for the studio house and its spatial concept.
- Concretisation of the idea through the choice of construction / materialisation
- Development of an adequate facade and its expression
- Elaboration / Coherence of content and presentation of entire submission



Casa 1014 in Granollers, Spain
Harquitectes, 2014

Dialectical Design - Guide

Prof. Andrea Deplazes

Dialectical Design

Contrasts and counterpoints create tension. This is also true in architecture, and especially in its basic disposition: the layout and sequence of its rooms. You only notice that a room is small when you enter the next, larger room, or that it is low when you enter a higher one. In constant comparison, the human being is both measure and measurer. This comparison often happens unconsciously, yet perception is constantly shaped ("sensual intelligence perceives faster than the mind grasps" – Georg Franck, *Architektonische Qualität*). We call this comparative interrelationship "architectural dialectics". By sharpening one's perception and making it conscious to the mind, you gain a tool for designing such dialectical spatial dispositions.

Depending on their design, scale, proportions and sequence, spaces encourage certain perceptions, behaviours or activities in order to „live“ within them (so that life can unfold according to its will). Where this is not possible, we perceive it as an obstruction, a complication or a difficulty. In saying this, I also want to make it clear that I do not adhere to the modernist understanding of architecture as the result of „functions“ or „programmes“, or rather that this has only very limited significance in the emergence of dialectical spatial dispositions. In fact, the spaces themselves, with their specific characteristics, only open up options and possibilities for appropriation - they have so-called „potential“ and „harbour“ opportunities that are latent (i.e. hidden) but must be exposed in advance (see Peter Sloterdijk, *Sphären Vol. III*, for elaboration). Potential is also the term used to describe an electrical „field of tension“ between the positive and negative poles.

Motto

To create a field of tension, we set a „motto“, e.g. „living + working“. These two terms denote two fundamentally contradictory, yet complementary, alternating life situations: Italian „ozio“ and „negozio“. Ozio, from the Latin otium, means leisure, or „free time“ or, in Italian the even more beautiful „dolce far niente“ - sweet idleness. We associate this with dwelling/ living, which we are in control of ourselves. On the other hand, there is neg-ozio, which means „not being idle“, or, conversely, being active or busy. For many of us, negozio is necessarily externally determined. Negoziare means to trade, negotiate, handle etc. Negozio means „business“, but also business premises, shops, stores etc. So with negozio we are immediately dealing with concrete architectural spaces.

We associate different expectations and especially ideas of space with both living and working, which obviously determine our lives in a fundamental way. It is interesting to find out how the two dialectical opposites can be related to each other in the design - in concrete spatial terms.

„Atelierhaus“

For this we use the working title „Atelierhaus“, or studio house, which combines living + working in one title. The plus sign stands for „design“. It is not a simple addition process, but a much more demanding process of synthesis, that under the banner of the architectural idea or concept must lead to a holistic, „compact“ result, the architectural project. But how does one arrive at this guiding idea?

Analysis

The „analysis of the problem“ requires preparatory work. For our exercise no scientific or theoretical analysis is required but we must examine the two life situations: living and working. By analysis we mean looking more closely, better understanding (what seems obvious to us), questioning and testing („exploring the potential“), e.g. using quick hand sketches to test the floor plan or sectional arrangements.

- **What does living mean?** What are the activities, and what spaces do they require?
What sizes are these spaces (S, M, L)? What furniture is important for their function?

- **What does working mean?** What are the working situations and what spaces do they require?
Are the working spaces integrated, complementary or independent of the living space?
What are their sizes?

S = studio, M = office (room) or shop, L = hall (workshop, business, studio)?

Dispositions

Use quick hand sketches to test out the dispositions of living + working for the studio house to develop initial approaches for the design and recognise potentials (articulating hypotheses). Set a specific disposition - what does it achieve architecturally and spatially?

This process can be supported by highlighting specific dispositions with specific “mottos”: e.g. inside + outside, open + closed, extroverted + introverted, visible + invisible, above + below, small + large, front + back, convex + concave, void + mass, day + night, etc. etc. etc.

The **mottos** are thus helpful guidelines for not losing sight of the essentials in the ongoing design process. It is important that they address and characterise spatial relationships (and do not abstract the design, like mottos such as social + asocial, ecological + economic, formal + informal, political + apolitical, and so on).

With this, we are on the way to a **synthesis**, to the articulation of an architectural idea, which is embedded in the project as a concept (in Latin concipere: to hold together, to grasp), the plus sign in the equation of the motto.

The **design process** is therefore:

- Analysis process (understanding the problem, discovering potentials)
- Clarification process (formulate content, omit the superfluous)
- Synthesis process (bringing living + working „under one architectural roof“)
- Radicalisation process (formulate and sharpen the architectural idea of the project)

Final step: the „Atelierhaus as town house“ (the motto for Exercise 2).

We examine the dialectic of the town house and country house, what specifically characterises a town house, and how it motivates the creation of good residential neighbourhoods.

List of Mottos

which can be applied to architectural spatial dispositions, or form guidelines for the expression of dialectical spatial relationships.

Living + working
Inner + outer
Above + below
Stage + backstage
Convex + concave
Front + back
Void + mass
Inside + outside
House + courtyard
Open + closed
Level + above
Big + small
Show + conceal
Visible + invisible
frame + fit-out
Day + night
Dwelling + wind
Dwelling + sand
Dwelling + snow
Dwelling + water
Dwelling + sun
Earth + sky
Light + dark
Compact + dispersed
Dense + loose
Positive + negative
Extroverted + introverted
Formal + informal
Rich + poor
Small + big
Hold up + weigh down
...

Poblenou, Block 1

Entwurf & Konstruktion II Semesterübung



Poblenou, Block 2

Entwurf & Konstruktion II Semesterübung

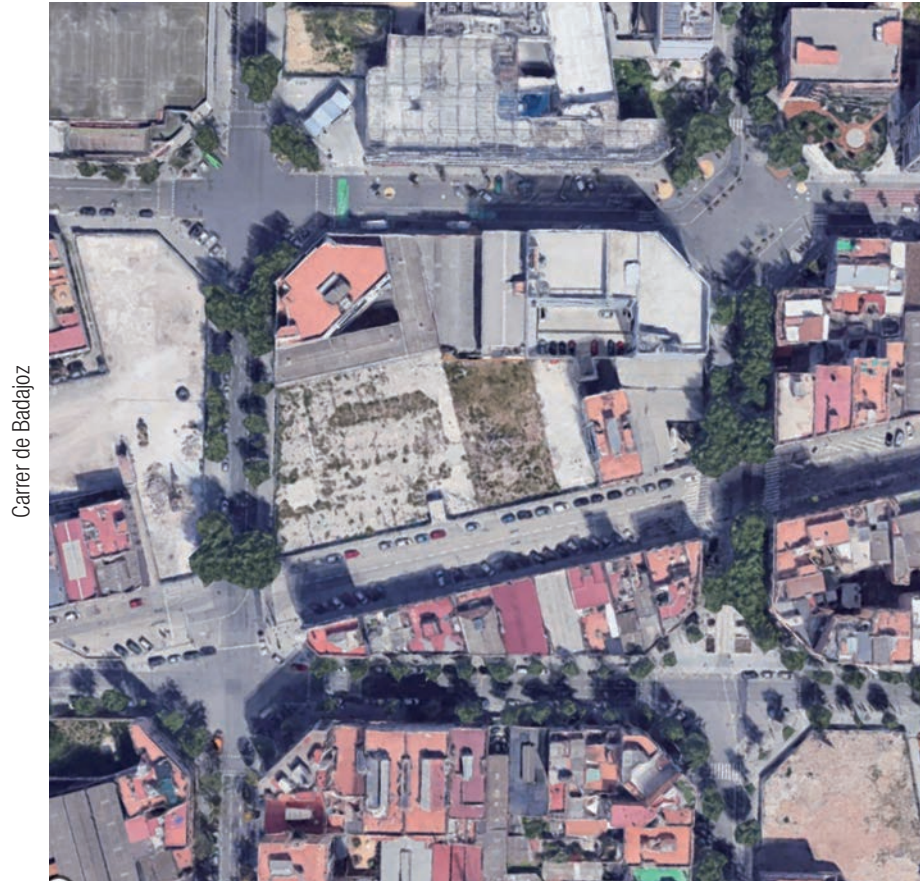


22./23.2	1./2.3	8./9.3 BUK?	15. 16.3	22. - 26.3 Seminarwoche	29./30.3	5. - 9.4 Osterferien	12./13.4	19./20.04	26./ 27.4	3. /4.5	4./5.05	10./11.5	17./18.5	28.05 Abgabe	31.5 - 2.6 Schlusskritik
Atelierhaus					Stadtanalyse		Quartieridee				Stadthaus				

Poblenou, Block 3

Entwurf & Konstruktion II Semesterübung

Carrer dels Almogàvers



Carrer de Pallars

22./23.2	1./2.3	8./9.3 BUK?	15. 16.3	22. - 26.3 Seminarwoche	29./30.3	5. - 9.4 Osterferien	12./13.4	19./20.04	26./ 27.4	3. /4.5	4./5.05	10./11.5	17./18.5	28.05 Abgabe	31.5 - 2.6 Schlusskritik
Atelierhaus					Stadtanalyse		Quartieridee			Stadthaus					

Poblenou, Block 4

Entwurf & Konstruktion II Semesterübung

Carrer de Pallars



Carrer de Pujades

Poblenou, Block 5

Entwurf & Konstruktion II Semesterübung



22./23.2	1./2.3	8./9.3 BUK?	15. 16.3	22. - 26.3 Seminarwoche	29./30.3	5. - 9.4 Osterferien	12./13.4	19./20.04	26./27.4	3./4.5	4./5.05	10./11.5	17./18.5	28.05 Abgabe	31.5 - 2.6 Schlusskritik
Atelierhaus					Stadtanalyse		Quartieridee				Stadthaus				

Poblenou, Block 6

Entwurf & Konstruktion II Semesterübung



Poblenou, Block 7

Entwurf & Konstruktion II Semesterübung



Poblenou, Block 8

Entwurf & Konstruktion II Semesterübung



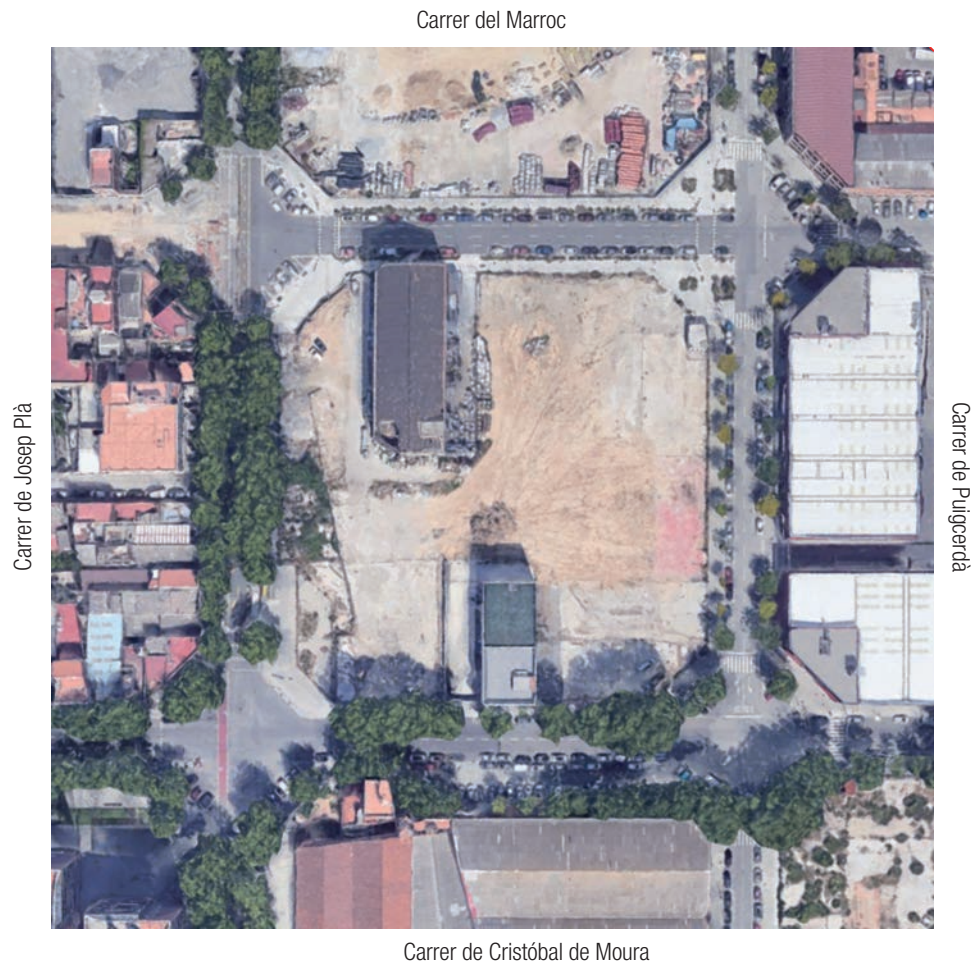
Poblenou, Block 9

Entwurf & Konstruktion II Semesterübung



Poblenou, Block 10

Entwurf & Konstruktion II Semesterübung



22./23.2	1./2.3	8./9.3 BUK?	15. 16.3	22. - 26.3 Seminarwoche	29./30.3	5. - 9.4 Osterferien	12./13.4	19./20.04	26./ 27.4	3. /4.5	4./5.05	10./11.5	17./18.5	28.05 Abgabe	31.5 - 2.6 Schlusskritik
Atelierhaus					Stadtanalyse		Quartieridee				Stadthaus				

Poblenou, Block 11

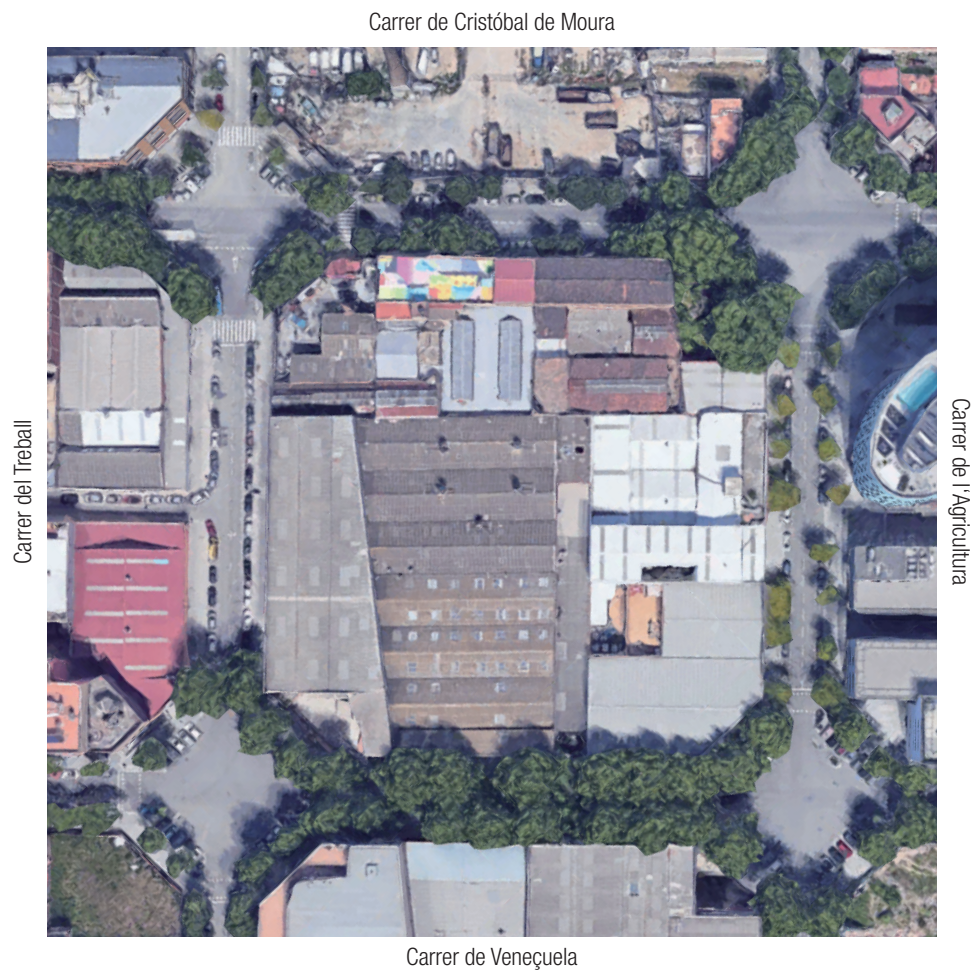
Entwurf & Konstruktion II Semesterübung



22./23.2	1./2.3	8./9.3 BUK?	15. 16.3	22. - 26.3 Seminarwoche	29./30.3	5. - 9.4 Osterferien	12./13.4	19./20.04	26./27.4	3./4.5	4./5.05	10./11.5	17./18.5	28.05 Abgabe	31.5 - 2.6 Schlusskritik
Atelierhaus					Stadtanalyse		Quartieridee				Stadthaus				

Poblenou, Block 12

Entwurf & Konstruktion II Semesterübung



Poblenou, Block 13

Entwurf & Konstruktion II Semesterübung



22./23.2	1./2.3	8./9.3 BUK?	15. 16.3	22. - 26.3 Seminarwoche	29./30.3	5. - 9.4 Osterferien	12./13.4	19./20.04	26./ 27.4	3./4.5	4./5.05	10./11.5	17./18.5	28.05 Abgabe	31.5 - 2.6 Schlusskritik
Atelierhaus					Stadtanalyse		Quartieridee				Stadthaus				

Poblenou, Block 14

Entwurf & Konstruktion II Semesterübung



22./23.2	1./2.3	8./9.3 BUK?	15. 16.3	22. - 26.3 Seminarwoche	29./30.3	5. - 9.4 Osterferien	12./13.4	19./20.04	26./ 27.4	3. /4.5	4./5.05	10./11.5	17./18.5	28.05 Abgabe	31.5 - 2.6 Schlusskritik
Atelierhaus					Stadtanalyse		Quartieridee			Stadthaus					

Poblenou, Block 15

Entwurf & Konstruktion II Semesterübung



Poblenou, Block

Entwurf & Konstruktion II Semesterübung

Zusätzliche kartographische Informationen unter:
<http://www.bcn.cat/geoportal/en/presentacio.html>

