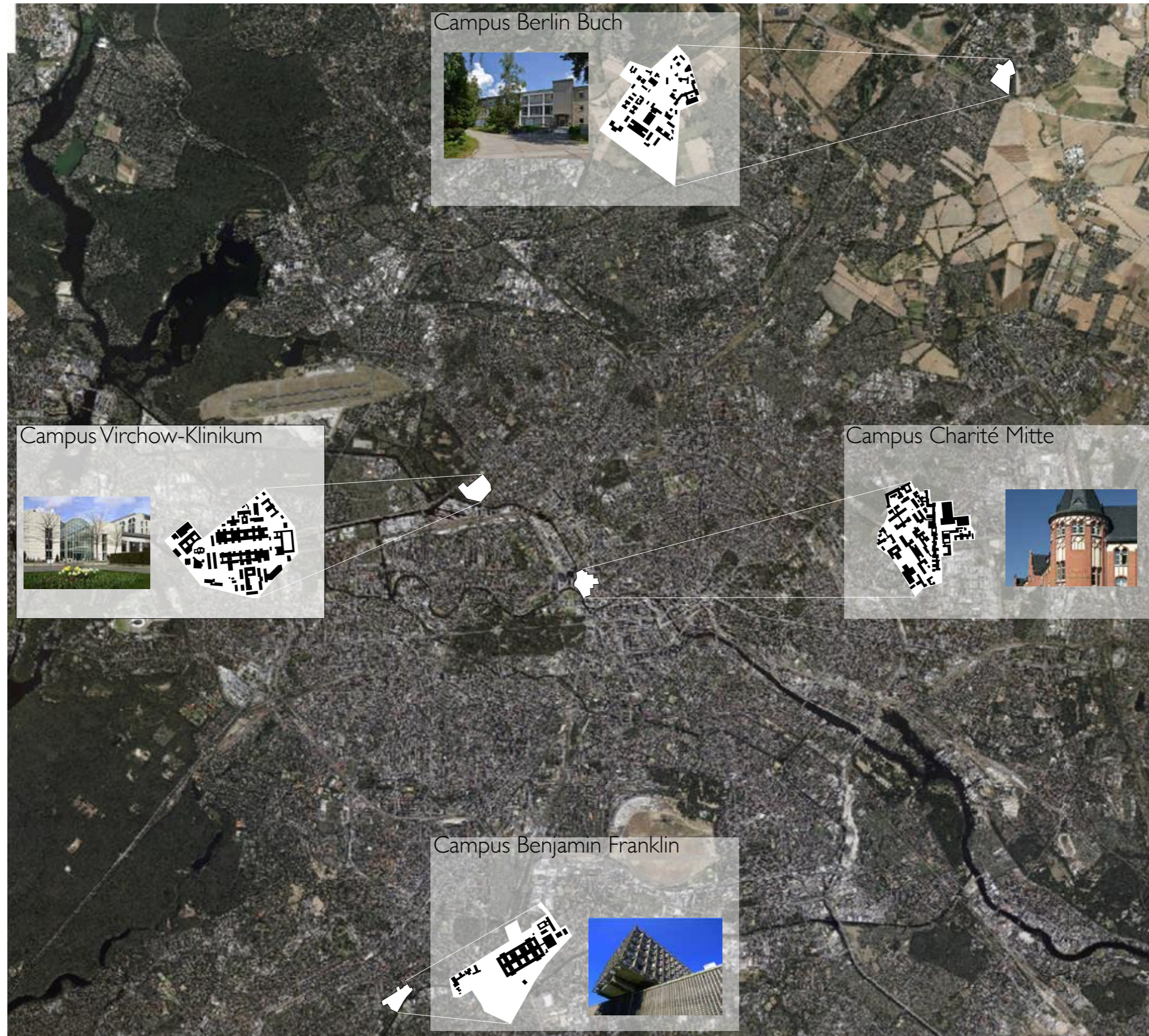


# Campus bio- and medical technology

Neubau Forschungsgebäude

„Simulierter Mensch“ - Charité Berlin

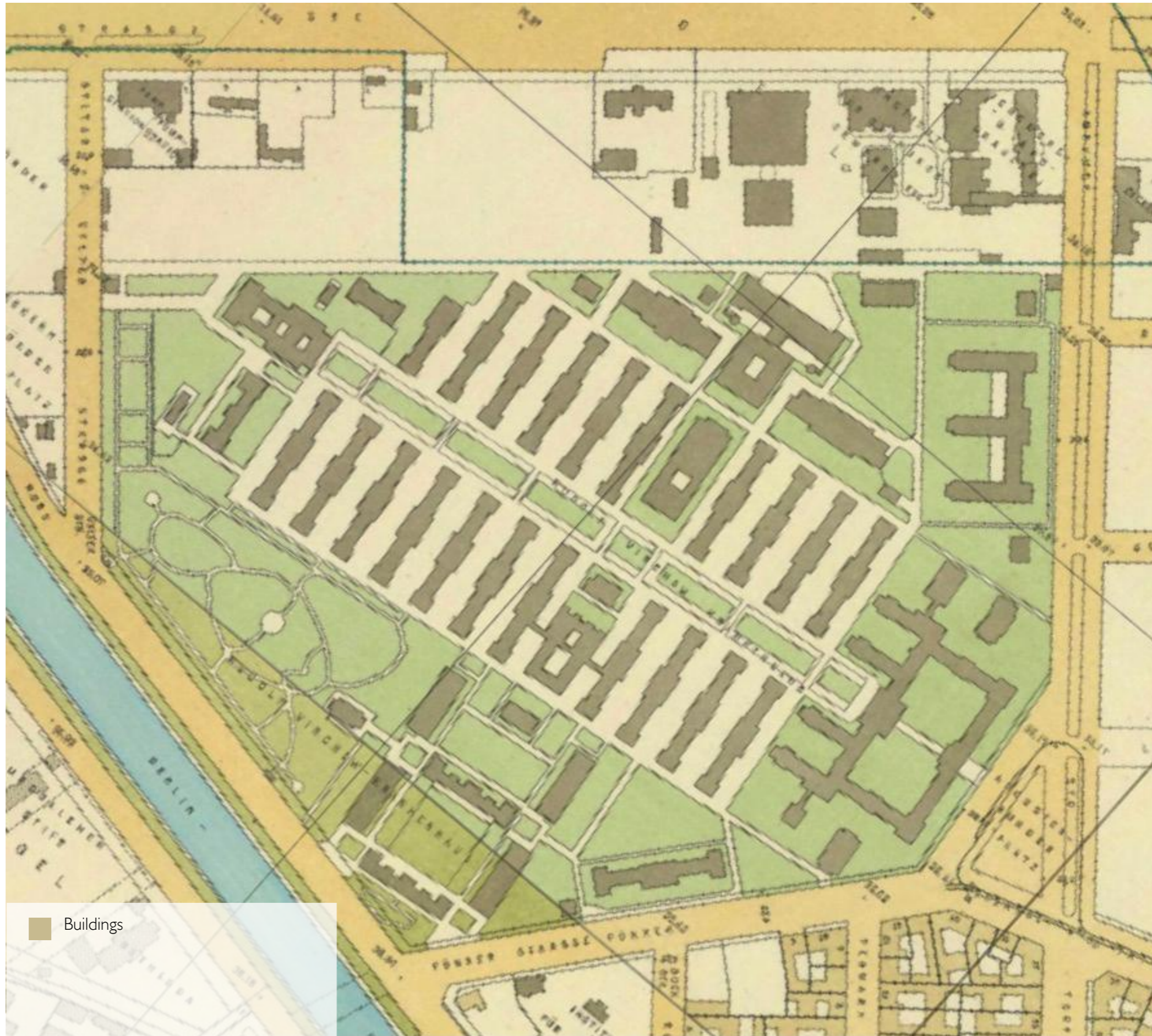
# Charité Locations



# The two grids



Fragmented garden city - 1906



Connected clinic Virchow - 1990



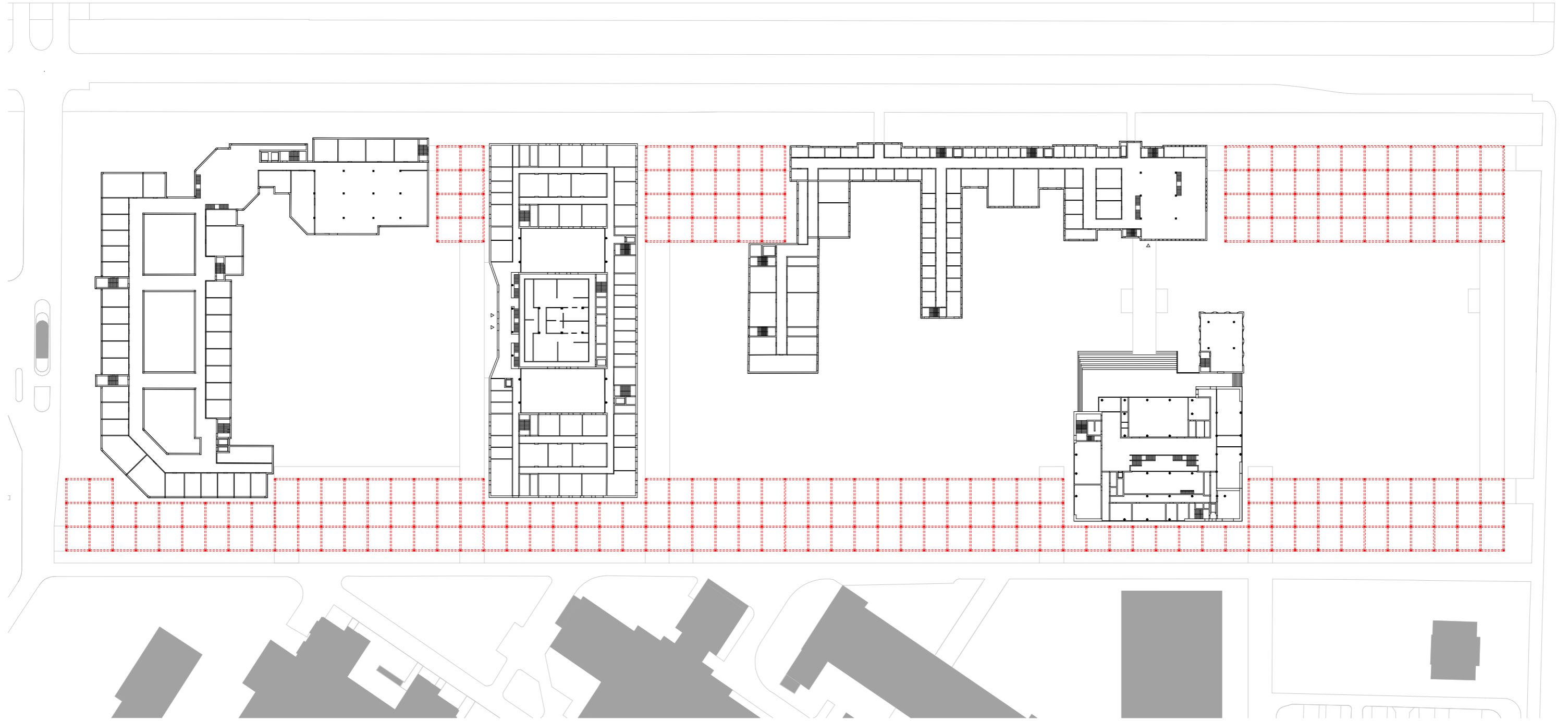
Connected campus - Future



Institutes



Construction system

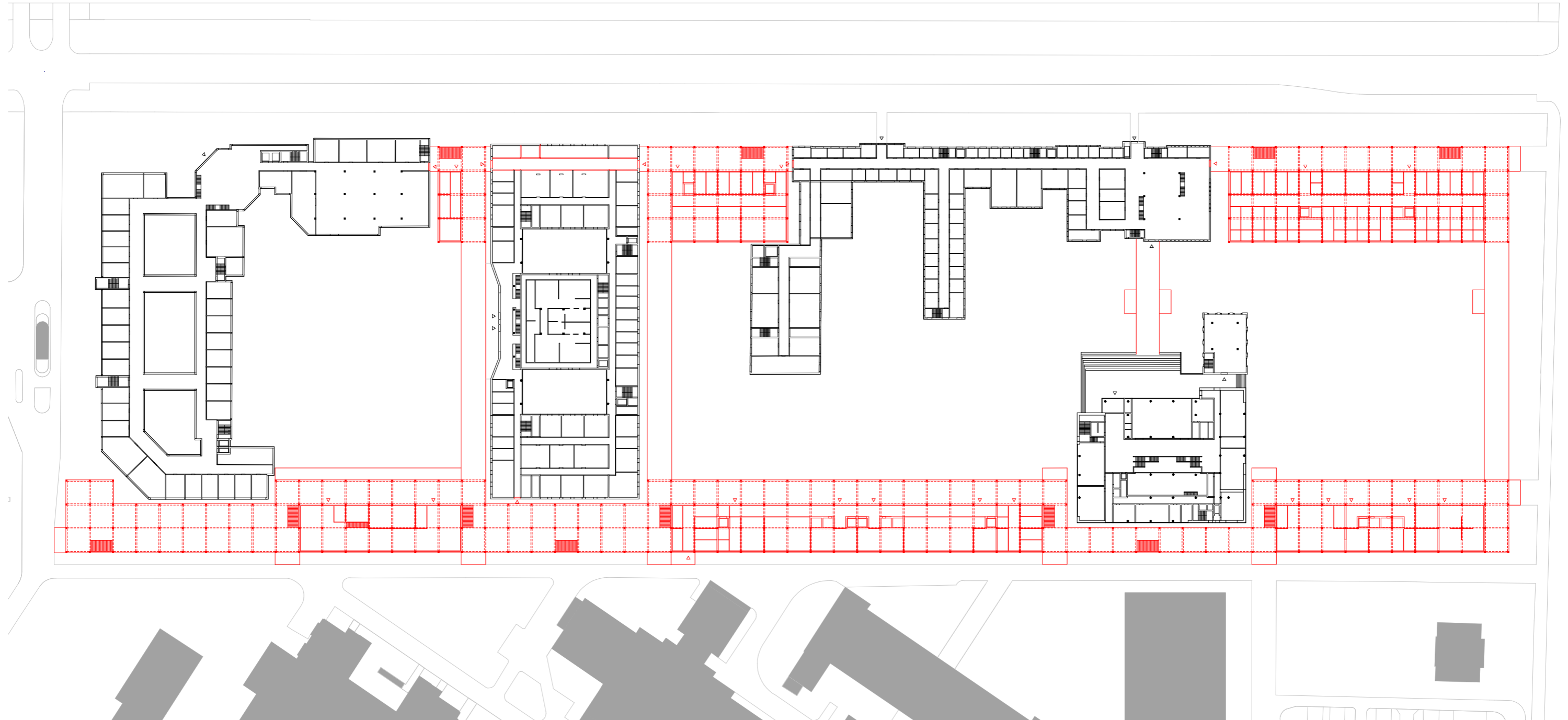


0 50





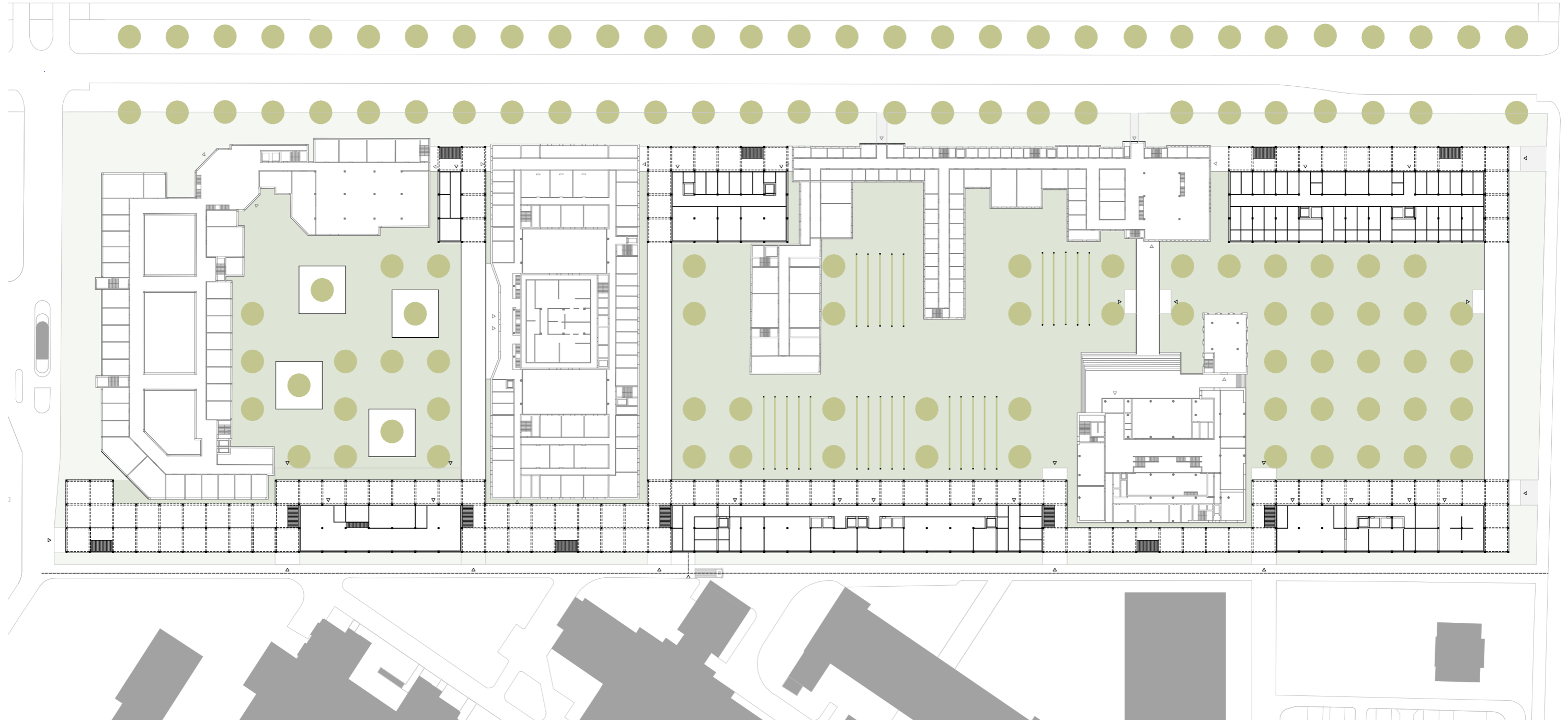
Ground floor plan - construction



0 50



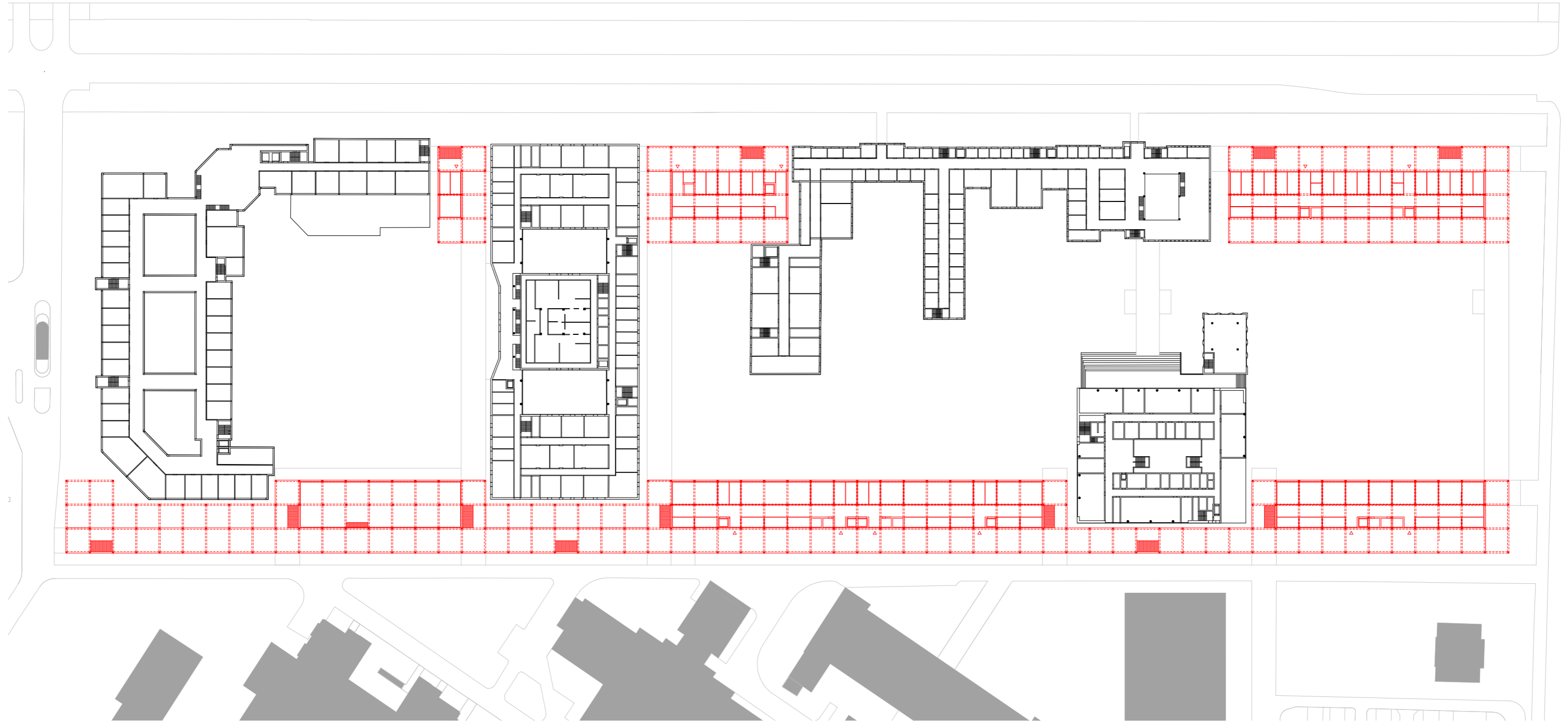
Ground floor plan - green space



0 50



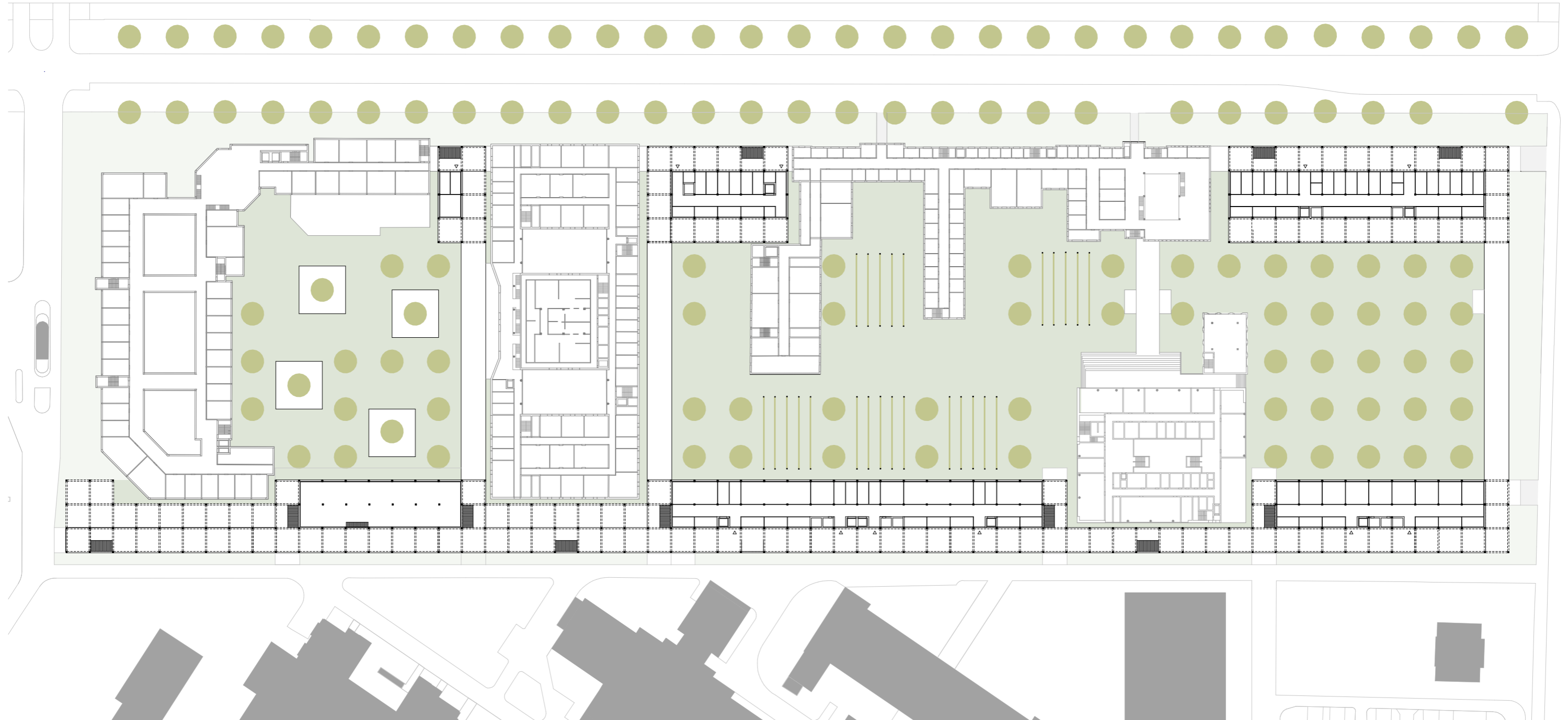
First floor plan - construction



0 50



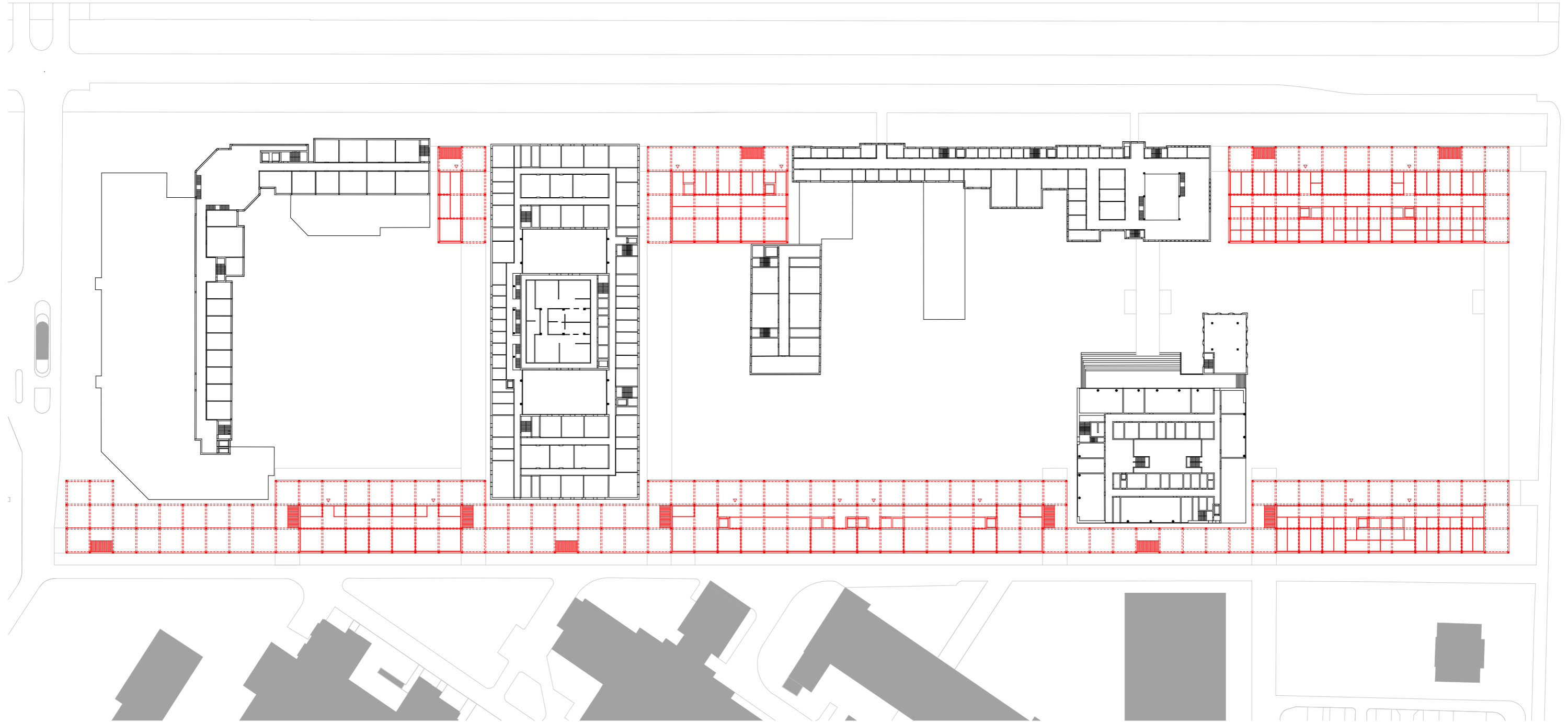
First floor plan - green spaces



0 50



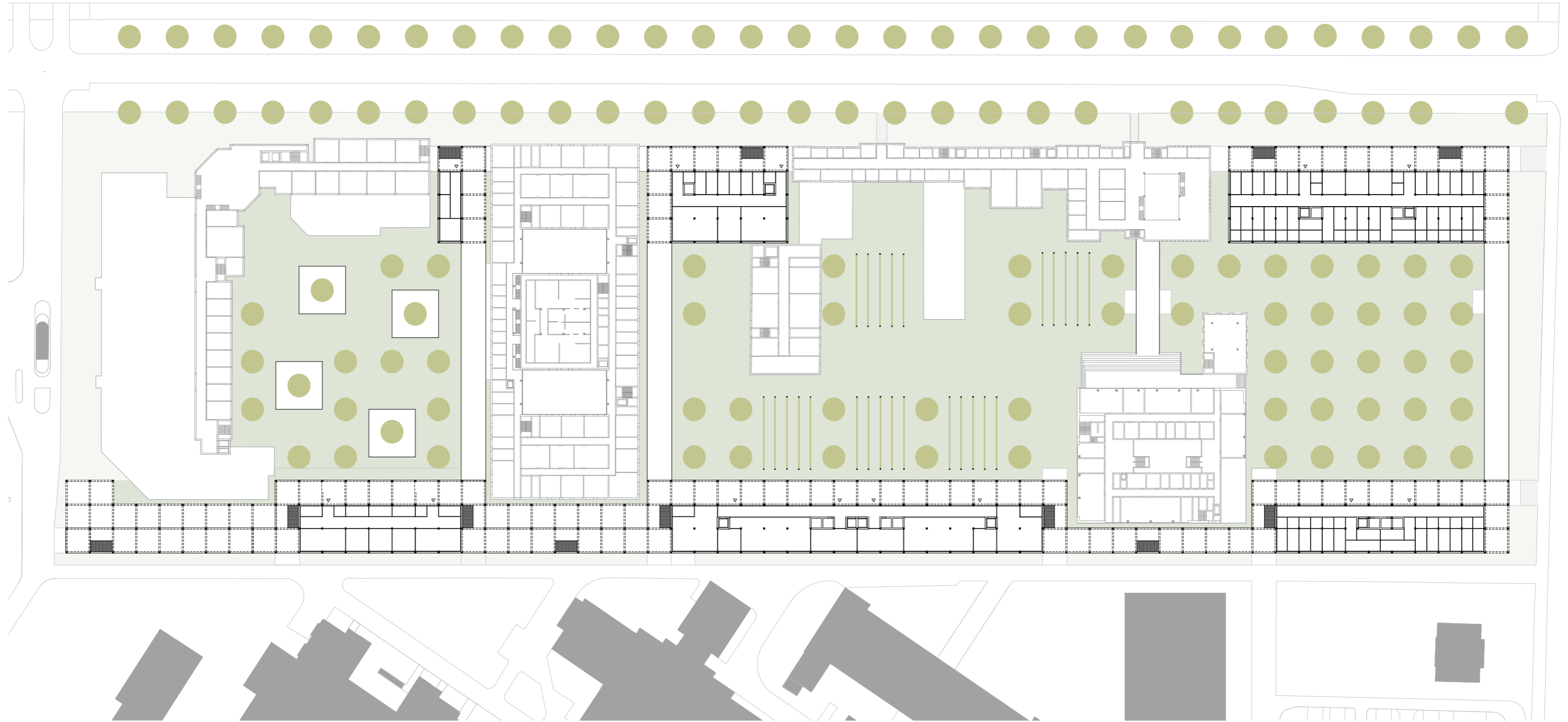
Second floor plan - construction



0 50



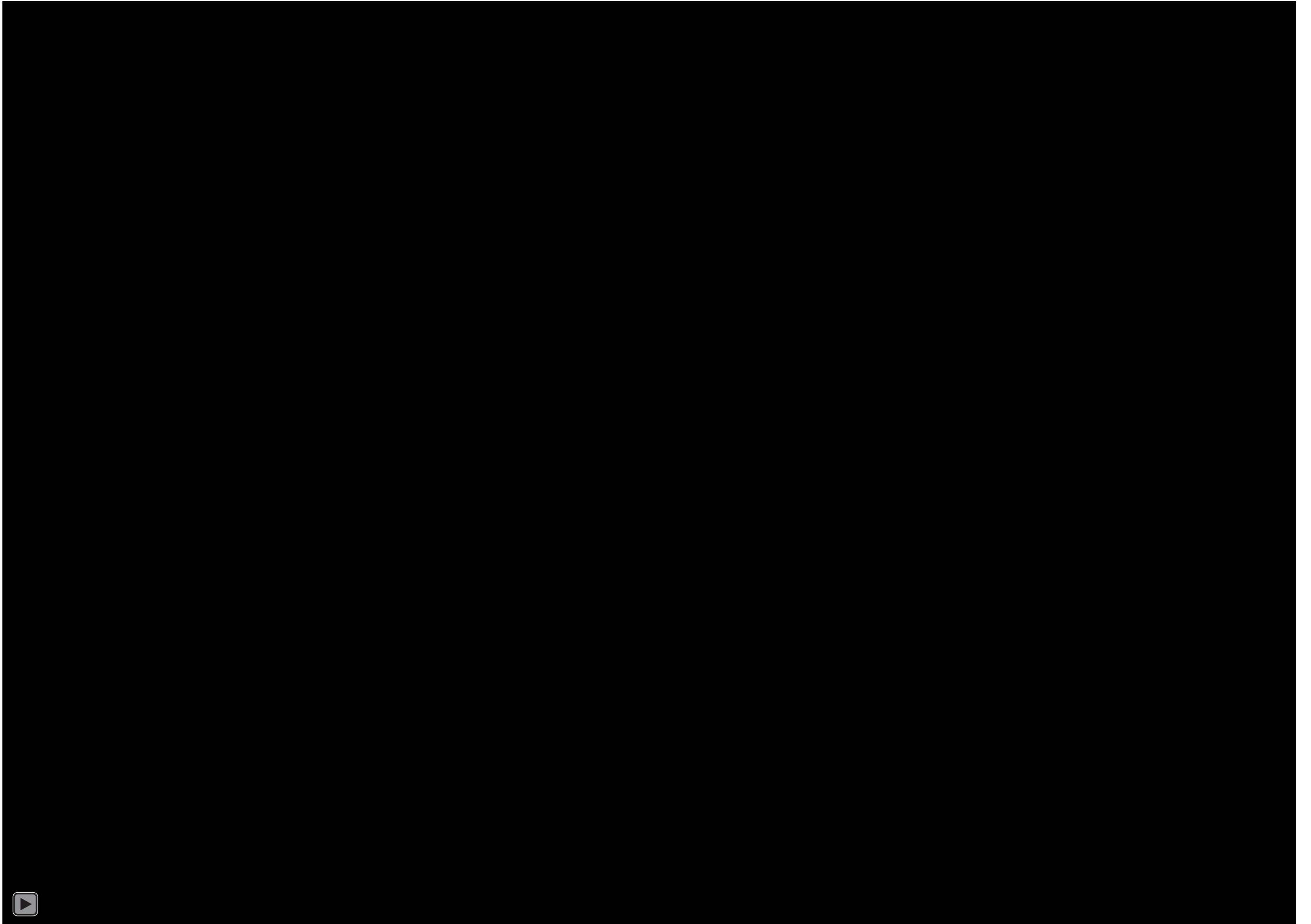
Second floor plan - green space



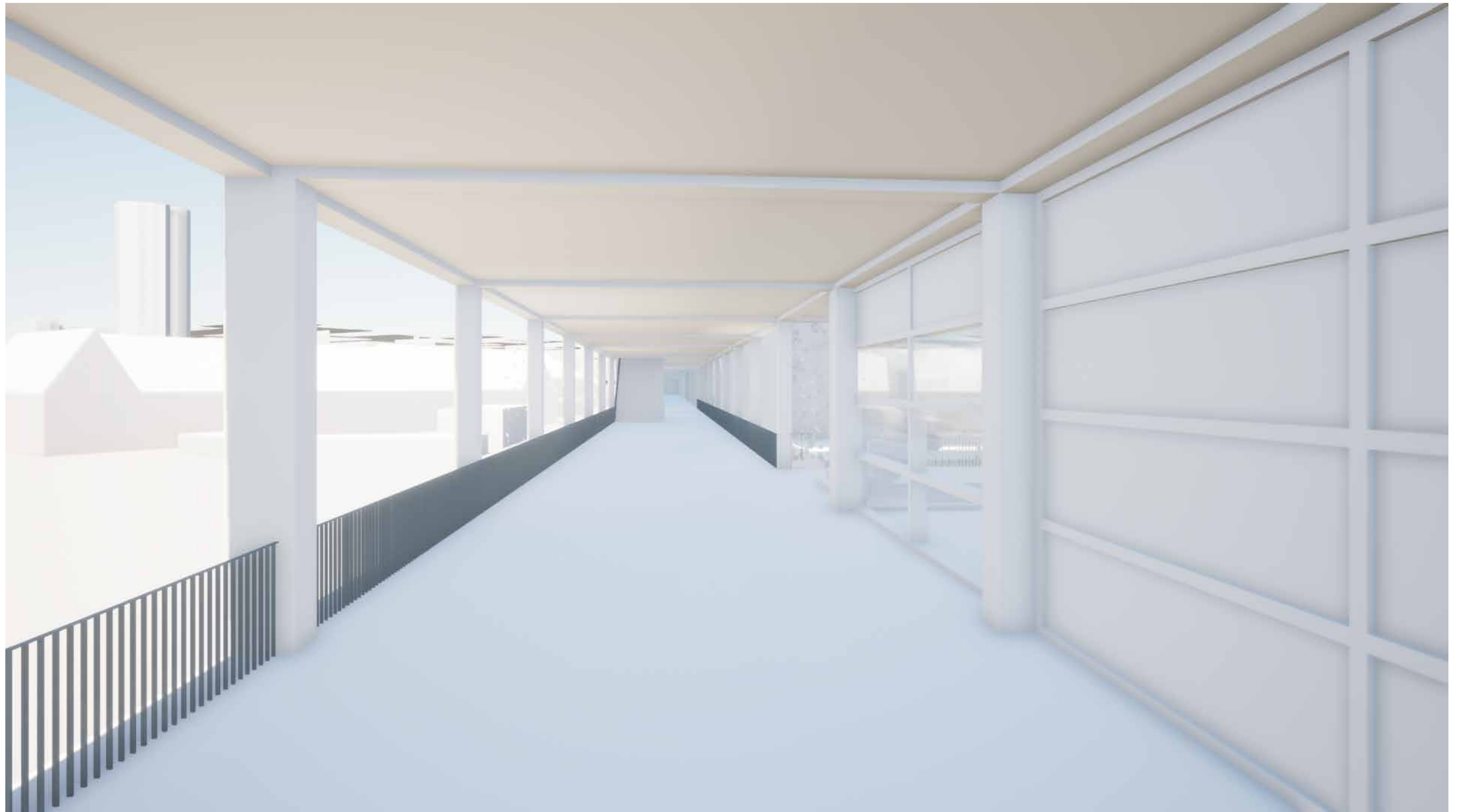
0 50



Central green space - video



Pasarelle - image

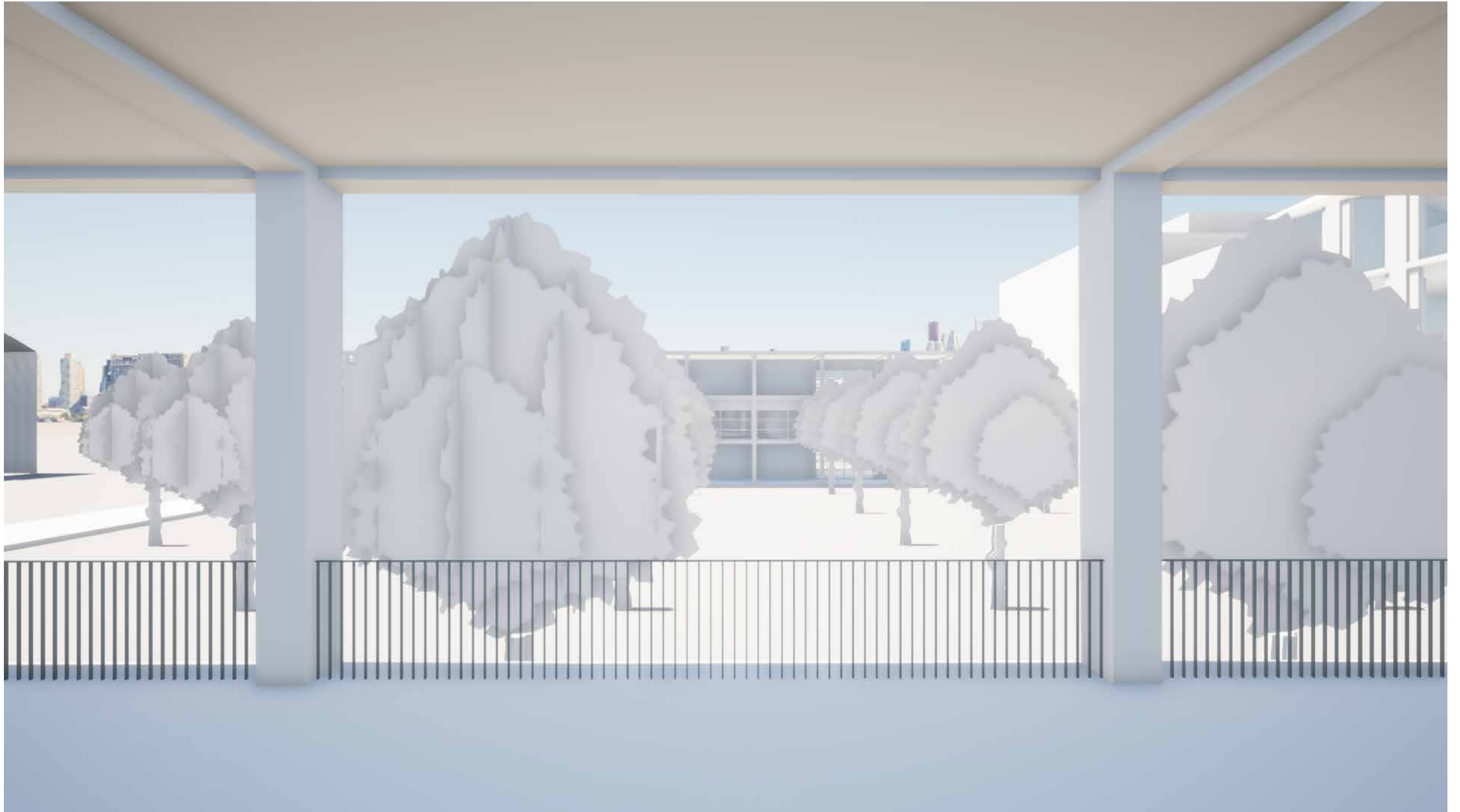




Climbing plants construction - image



Loggia - image

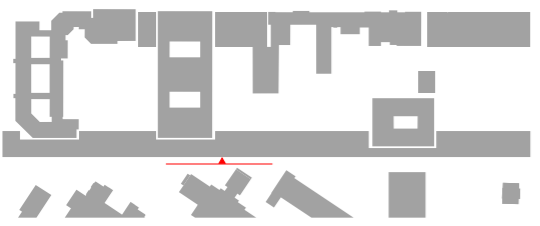
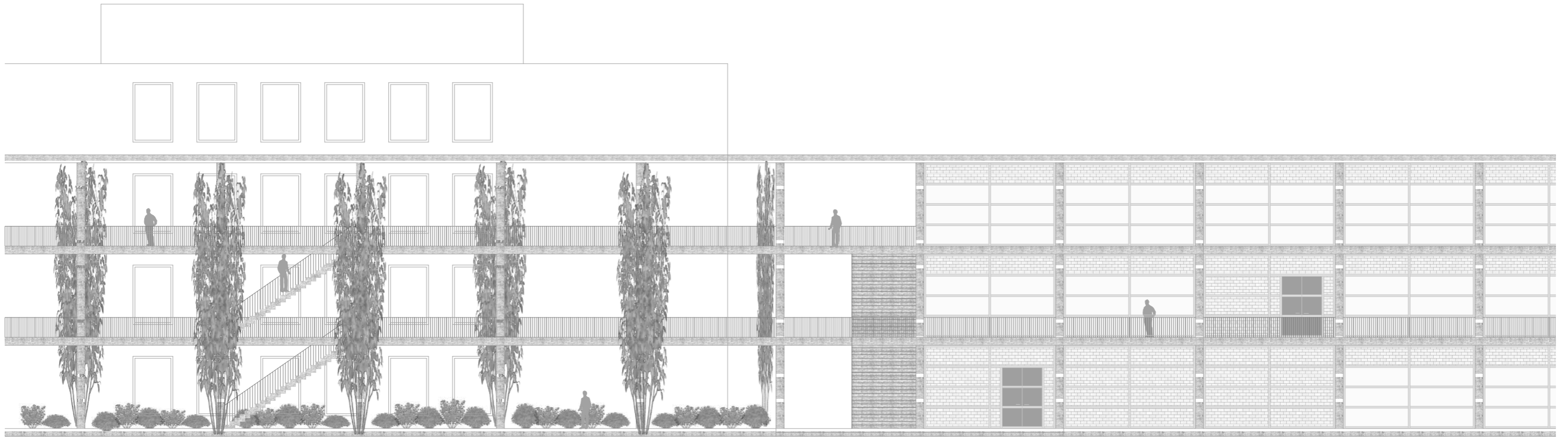


Section



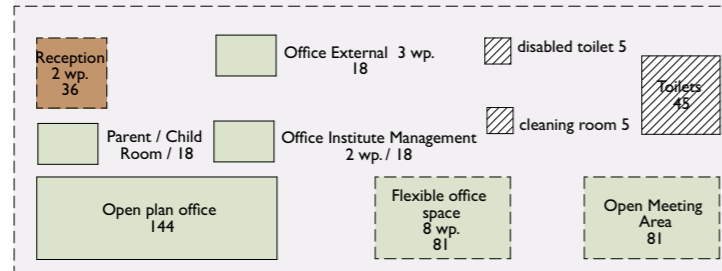
0  20

View

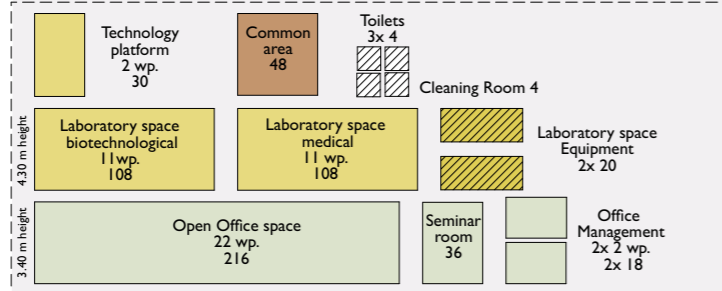


## Simulierter Mensch Berlin (SIM)

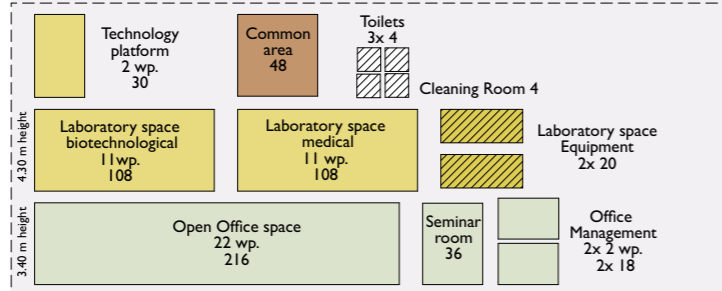
### Public Area



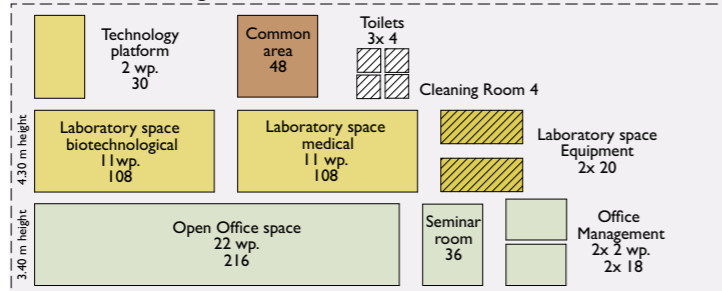
### Research field Tissues and Organs



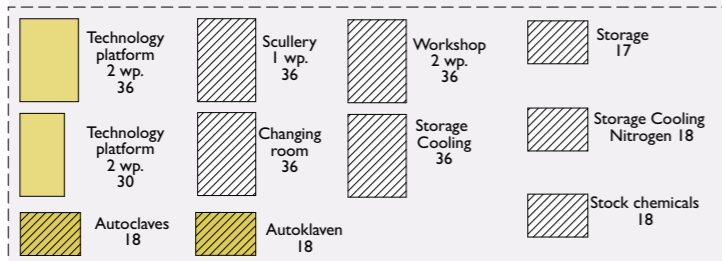
### Research field subcellular



### Research field Organs

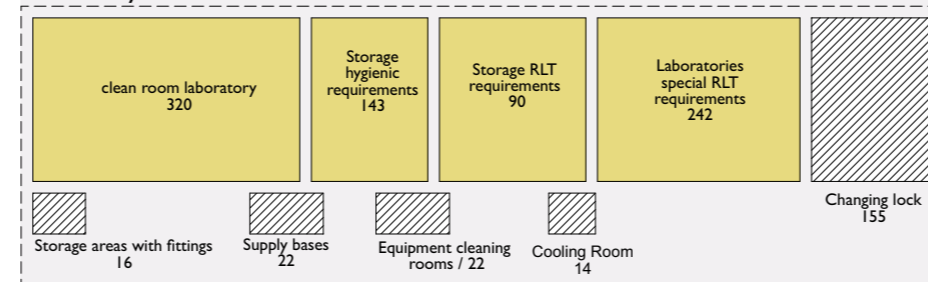


### Special technology and ancillary laboratory space

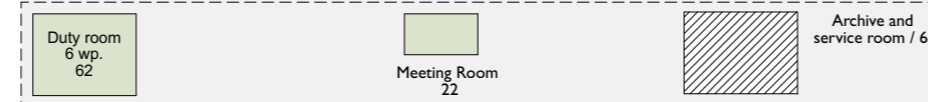


## Berlin Center for Advanced Therapies (BeCAT)

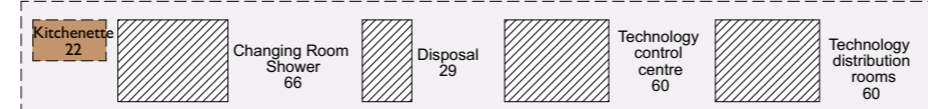
### Laboratory area BeCAT



### Office Area BeCAT

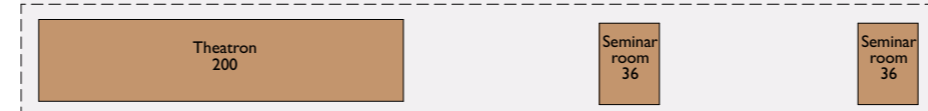


### Service Area BeCAT



## Common area

### Auditorium



### Cafeteria



### Probands

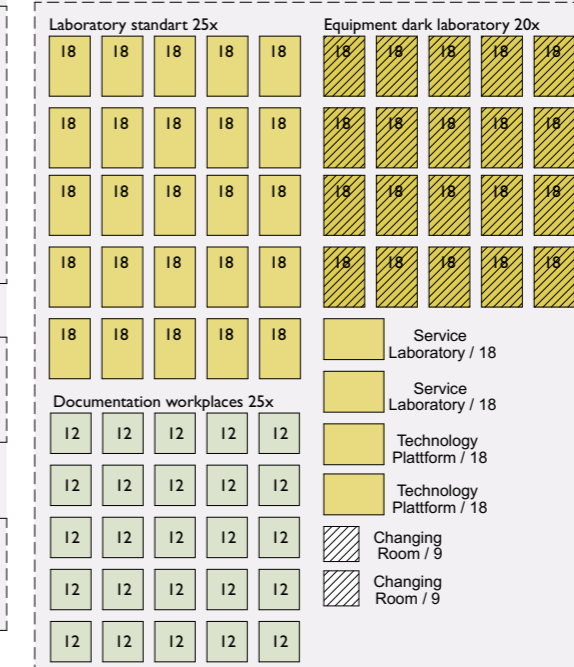


### Service Area

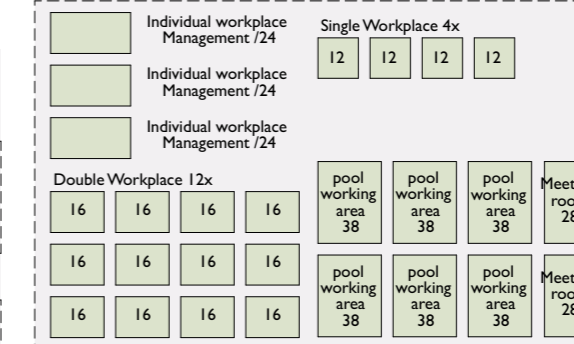


## Forschungsmodul

### Laboratory Area Research Module



### Office Area Research Module



### Service Area Research Module



### Classification from Competition Brief

