



BFH Campus Bern - Weyermannshaus Areal

ETH | D-ARCH | FS2021 | Studio Kerez
Final Critique | Davide Zippo



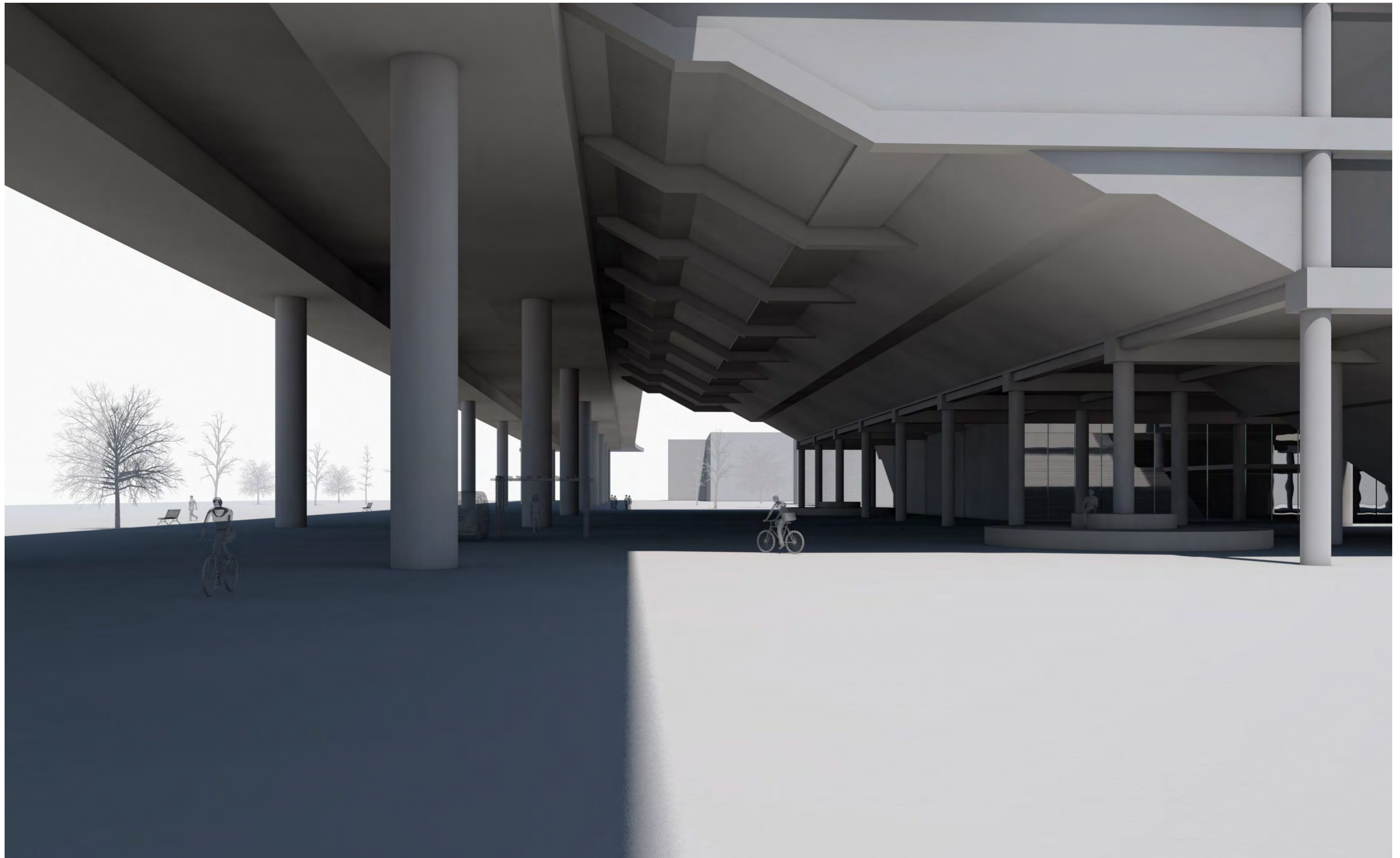
Silos



Viaduct

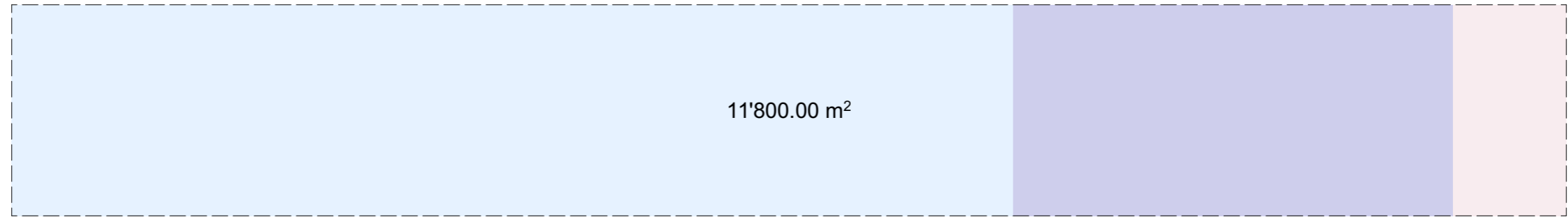


Winnerproject - Wulf Architekten gmbh Stuttgart (D)

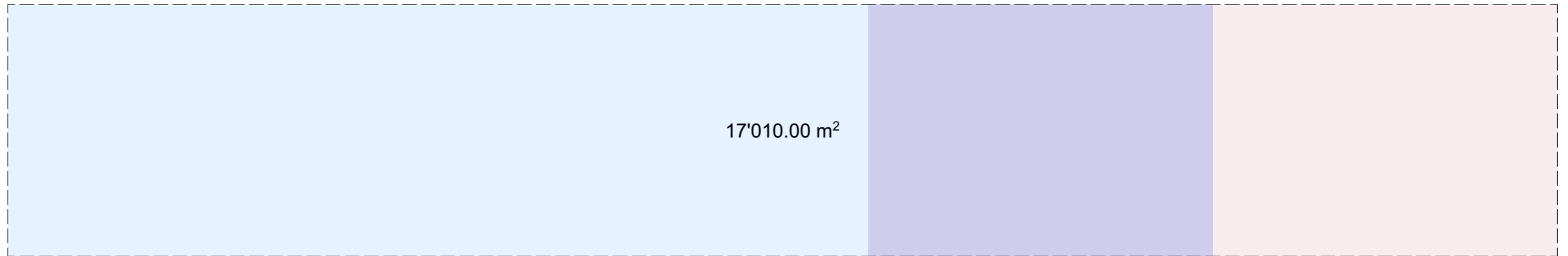




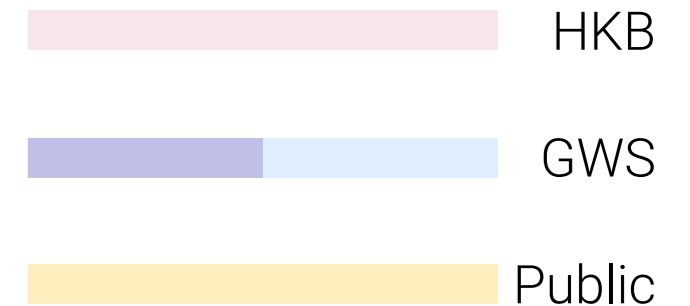
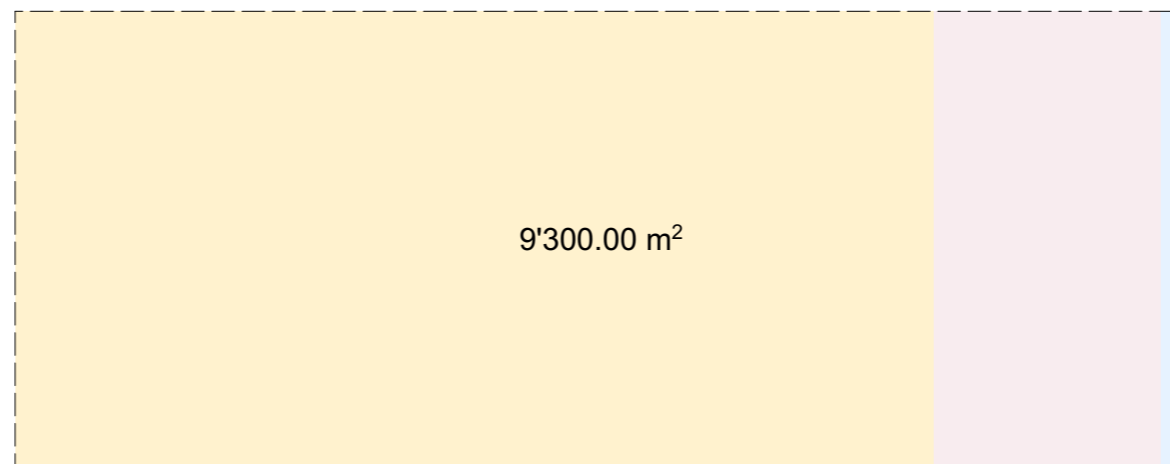
Office Spaces



Teaching Rooms,
Specific Labs,
Ensemble Rooms



Gastronomie, Library,
Sports, Aula, HKB
exhibitionhalls

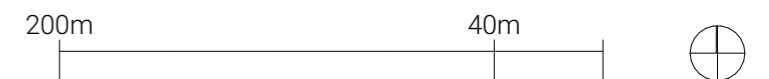


Organigram





Situation | Competition Perimeters





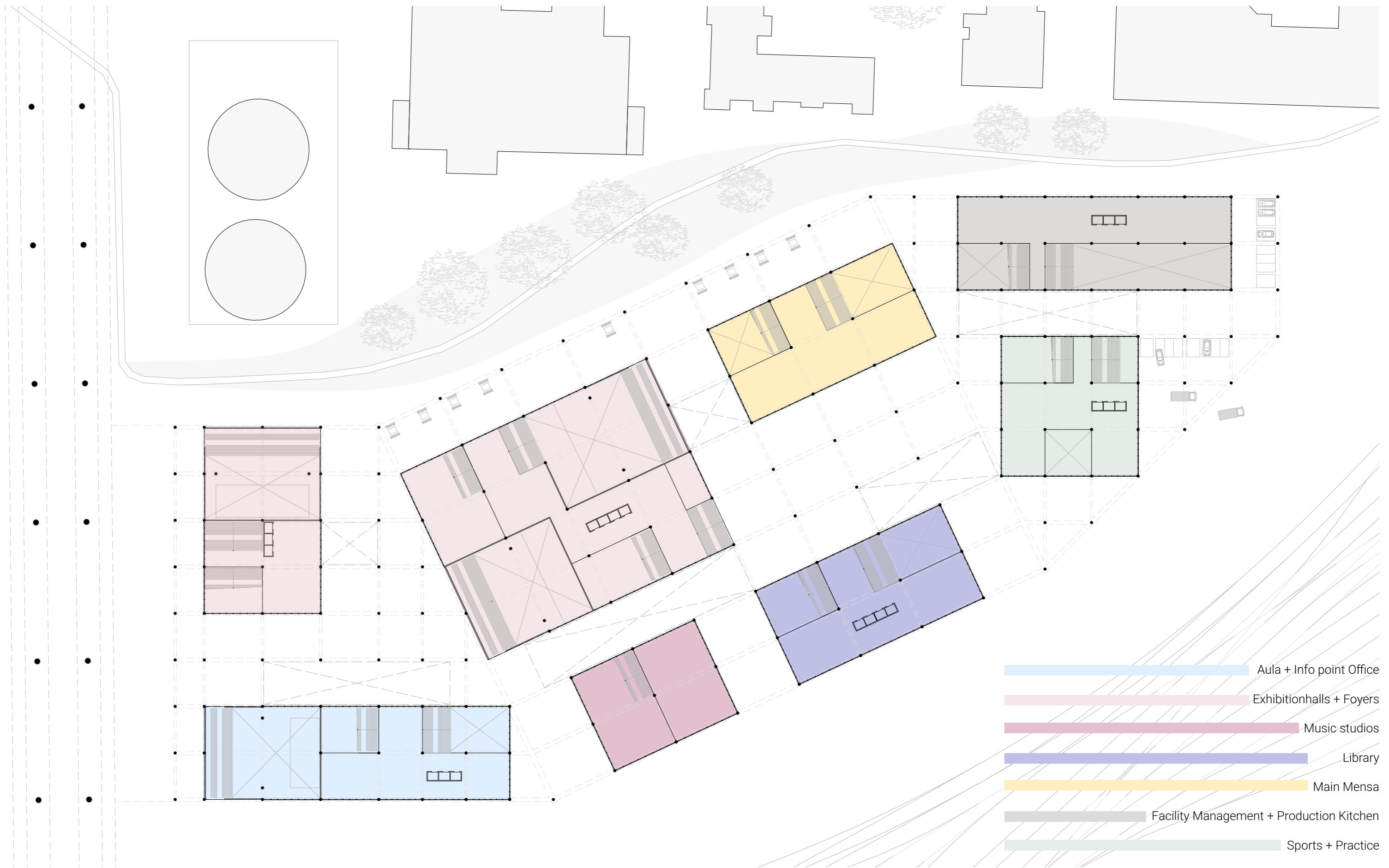
Situation





Ground Floor





1st Floor



Aula + Info point Office

Exhibitionhalls + Foyers

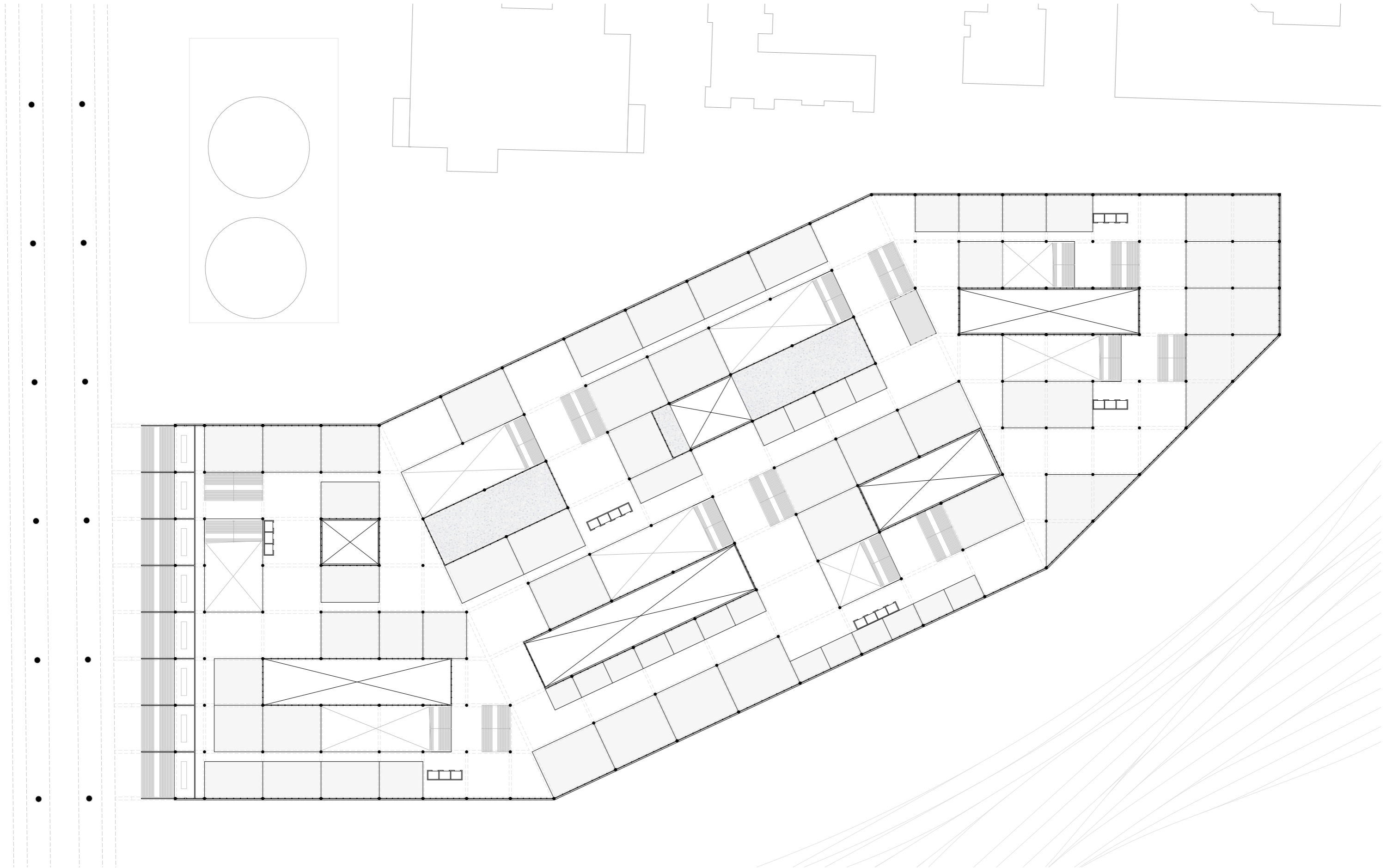
Music studios

Library

Main Mensa

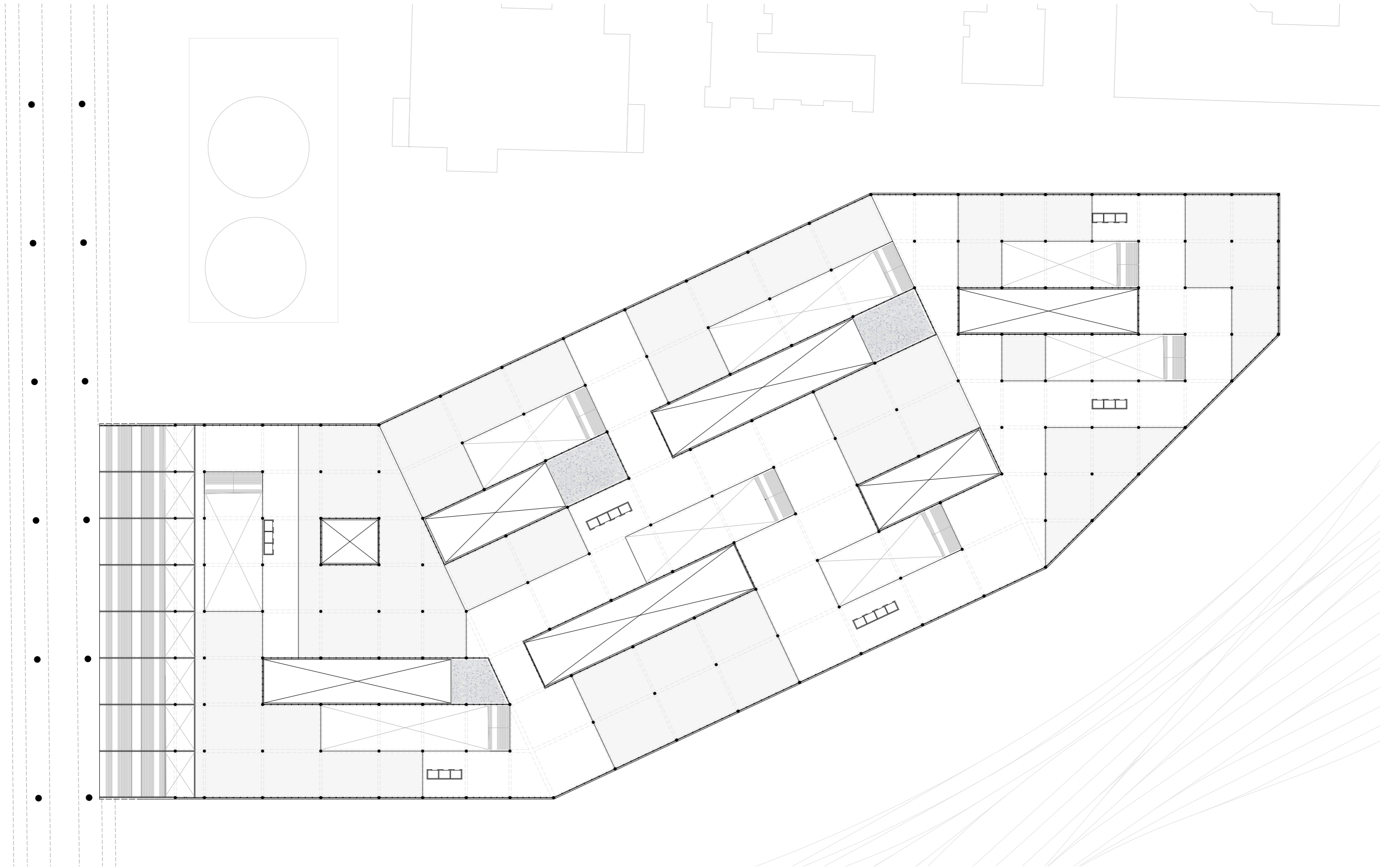
Facility Management + Production Kitchen

Sports + Practice



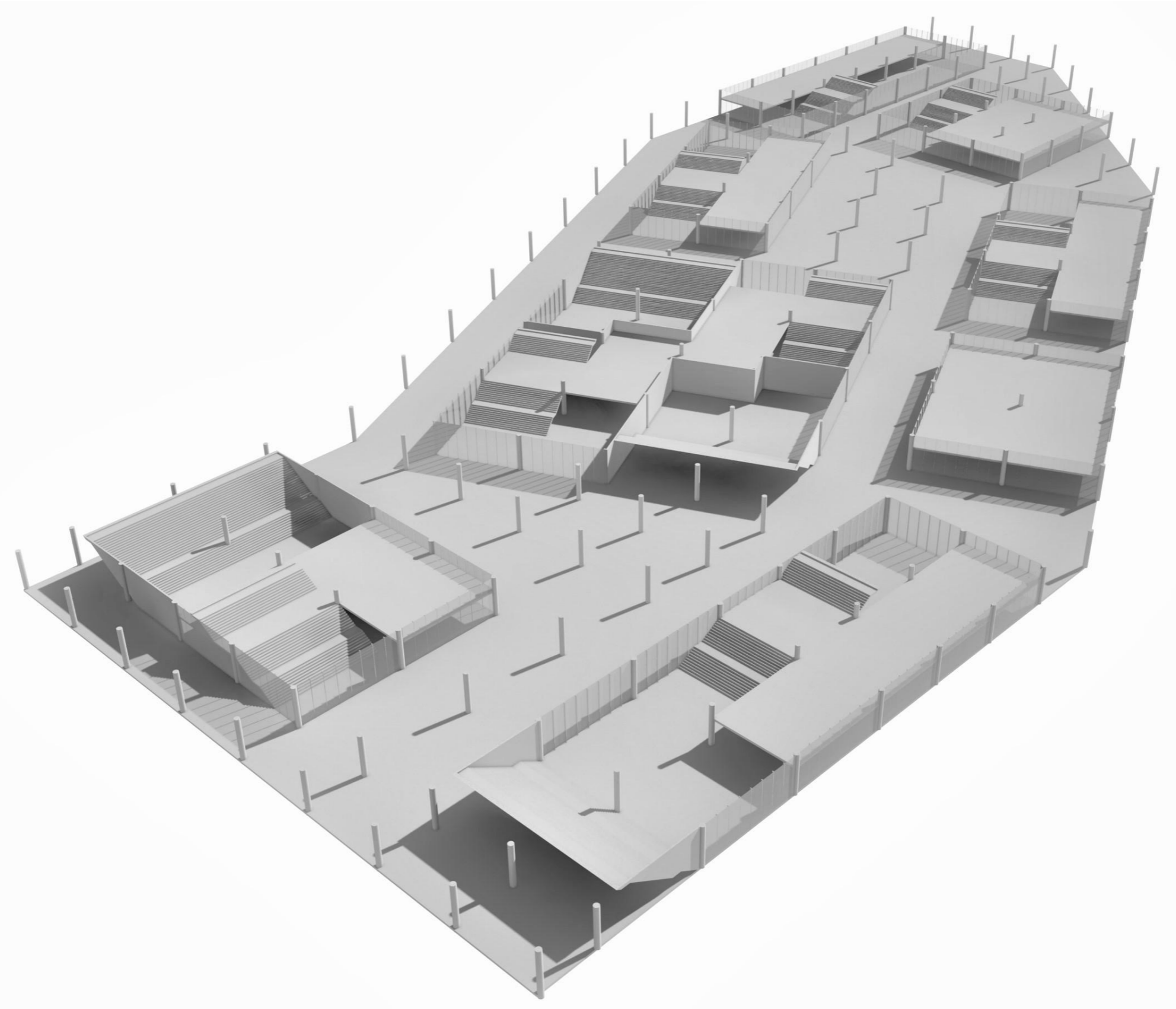
2nd Floor

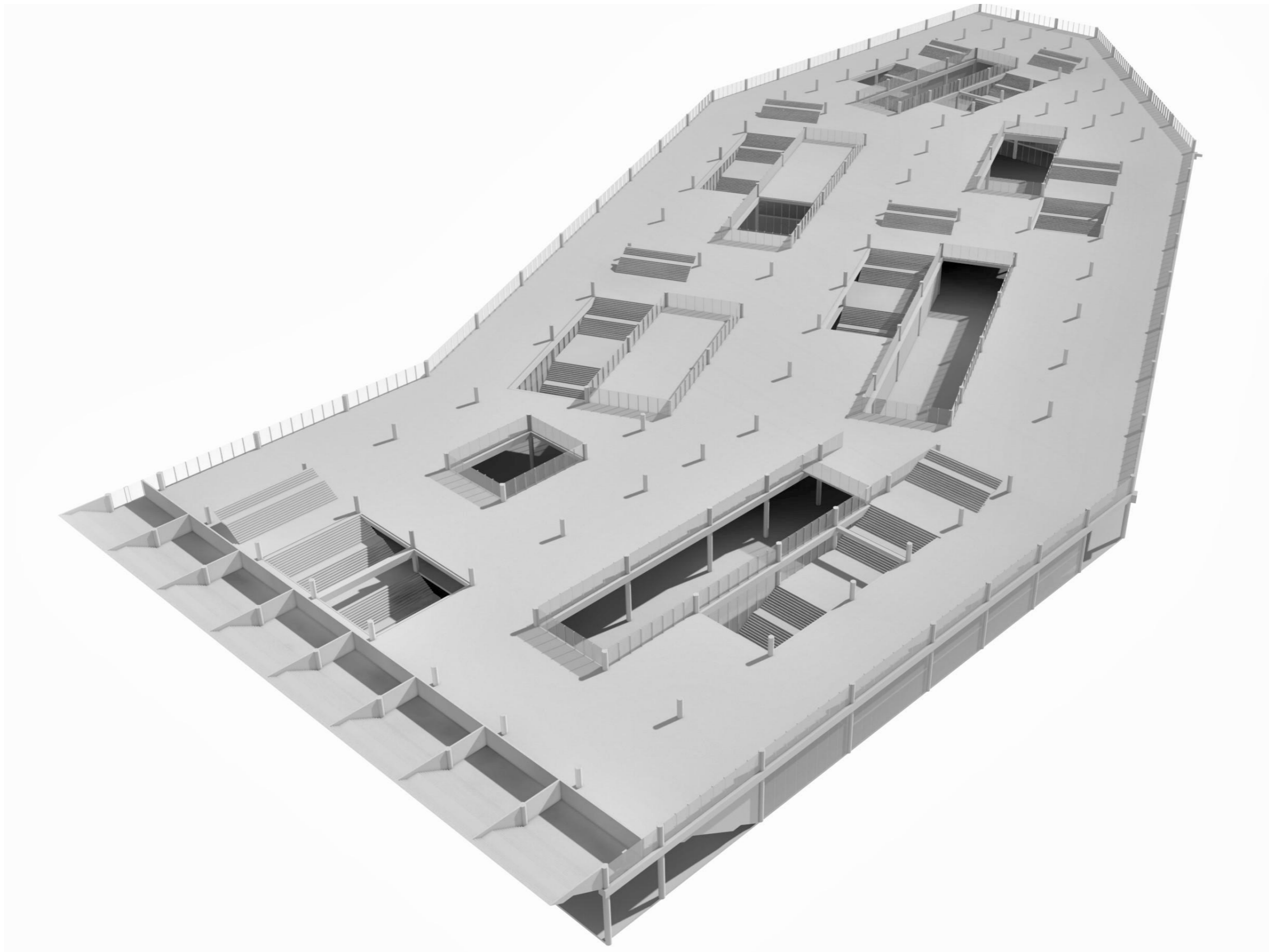


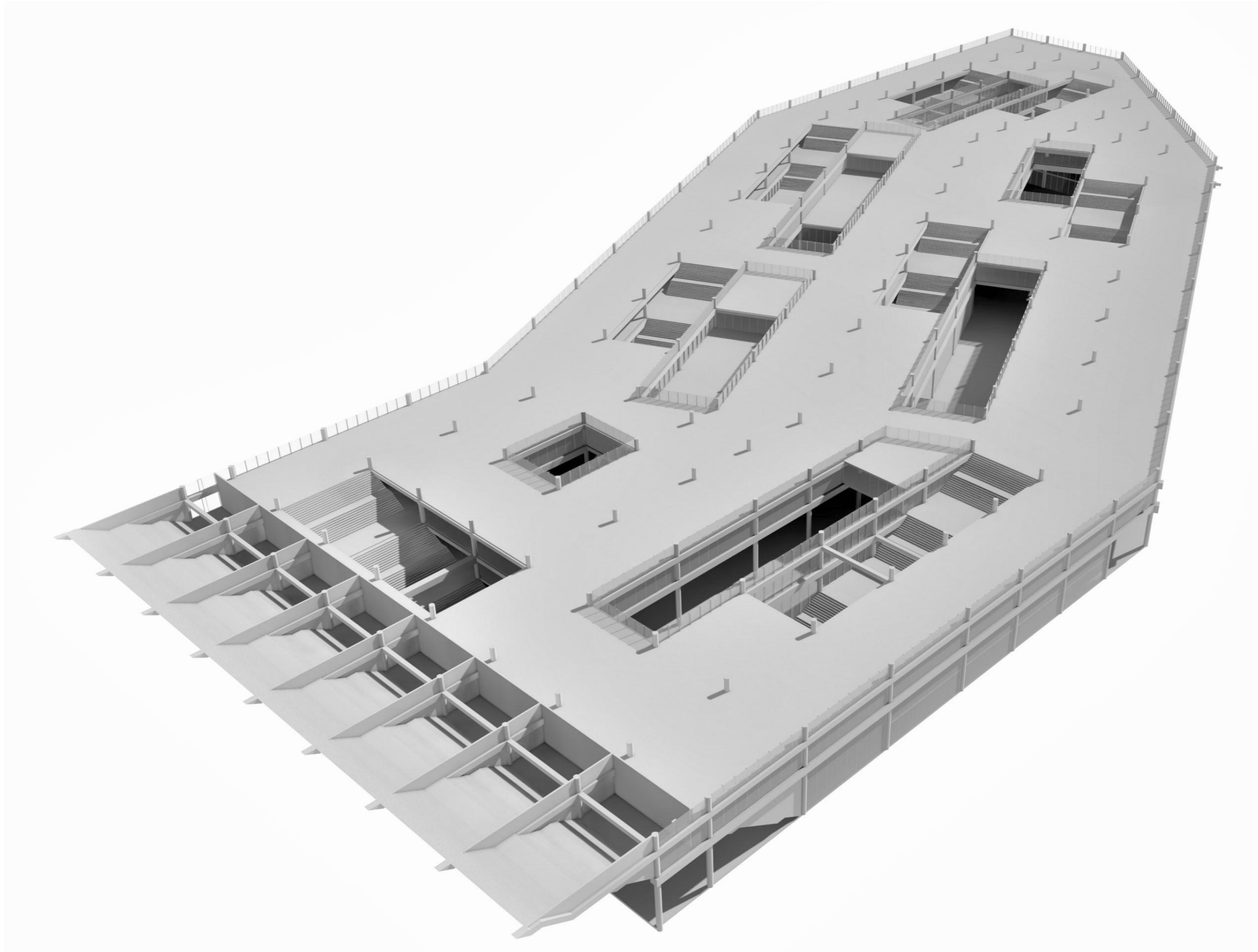


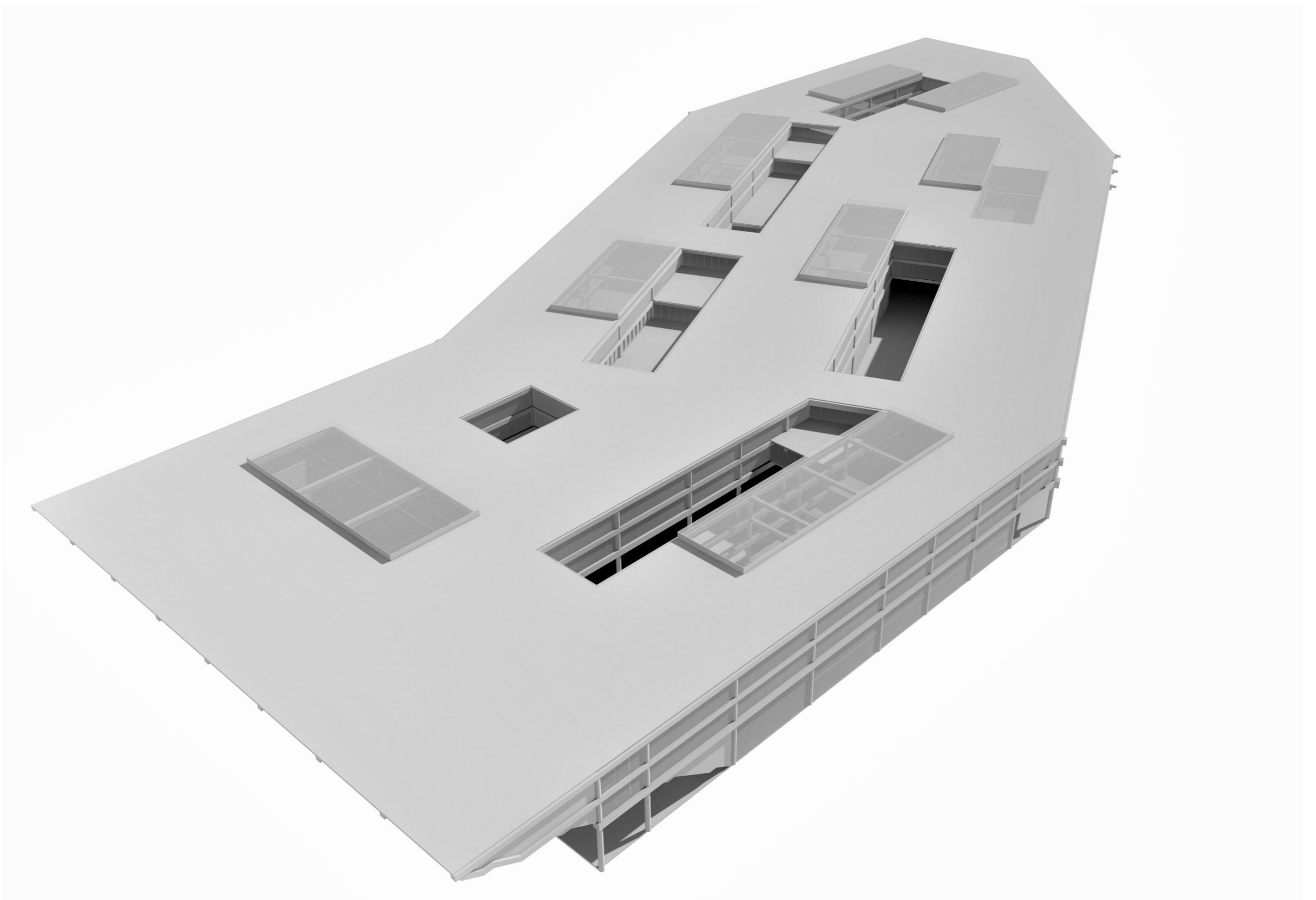
3rd Floor



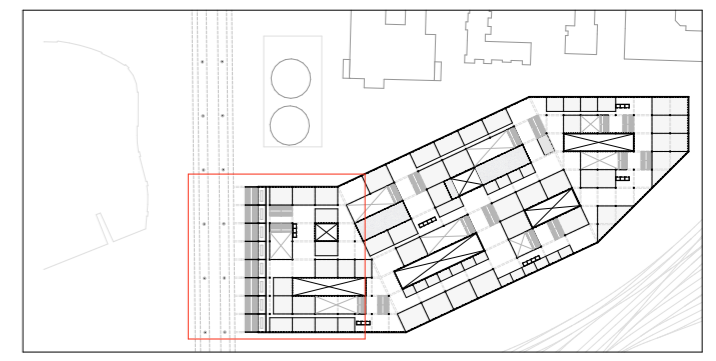
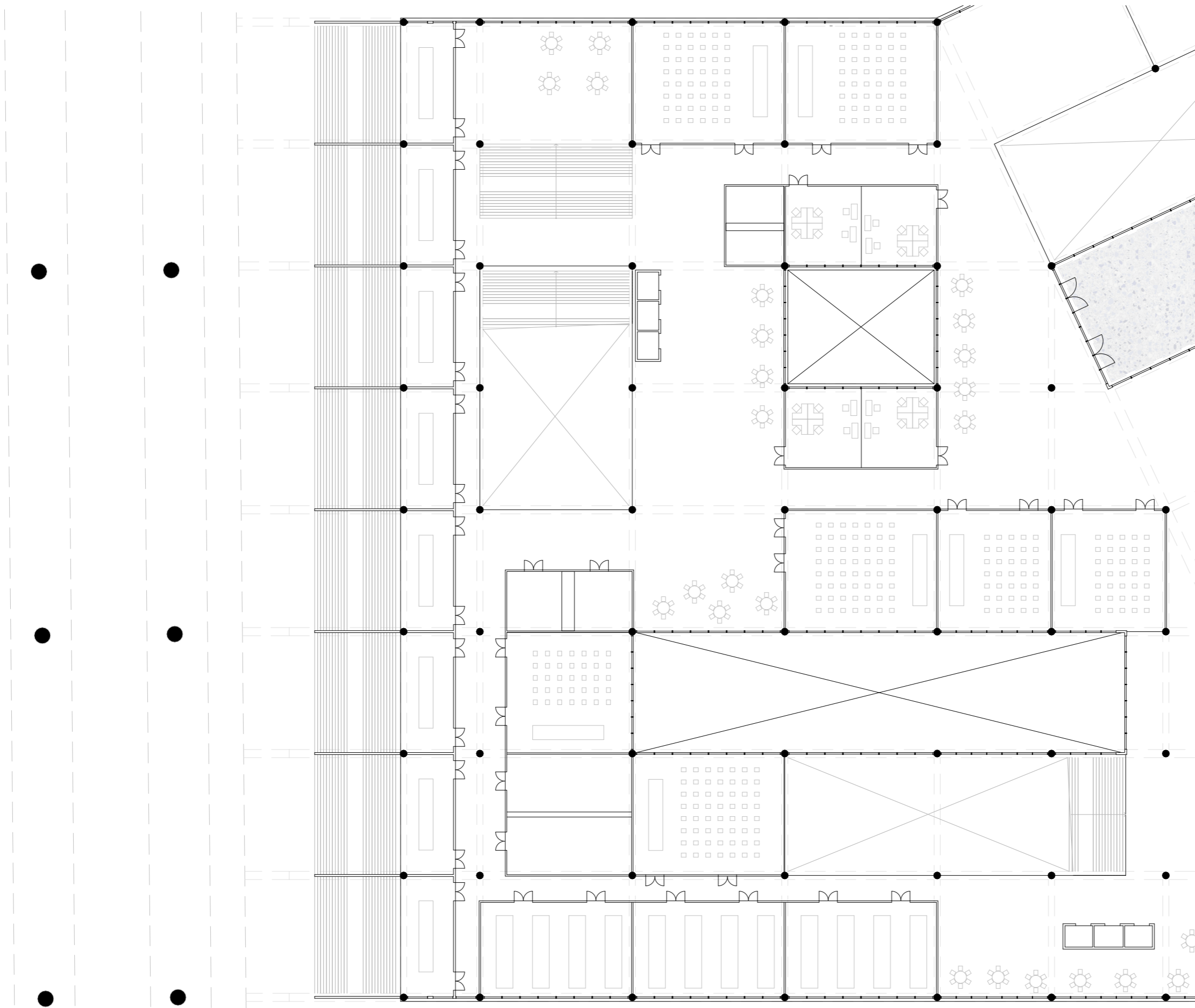






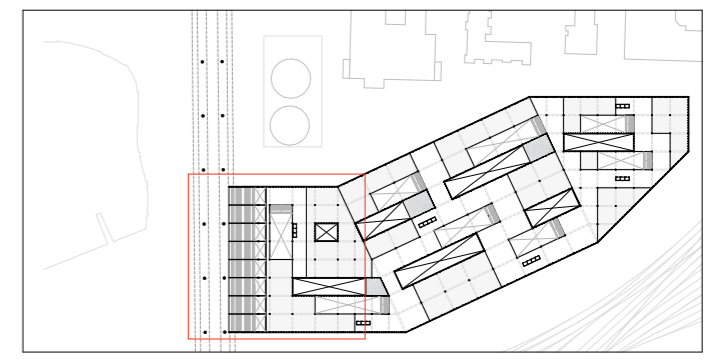
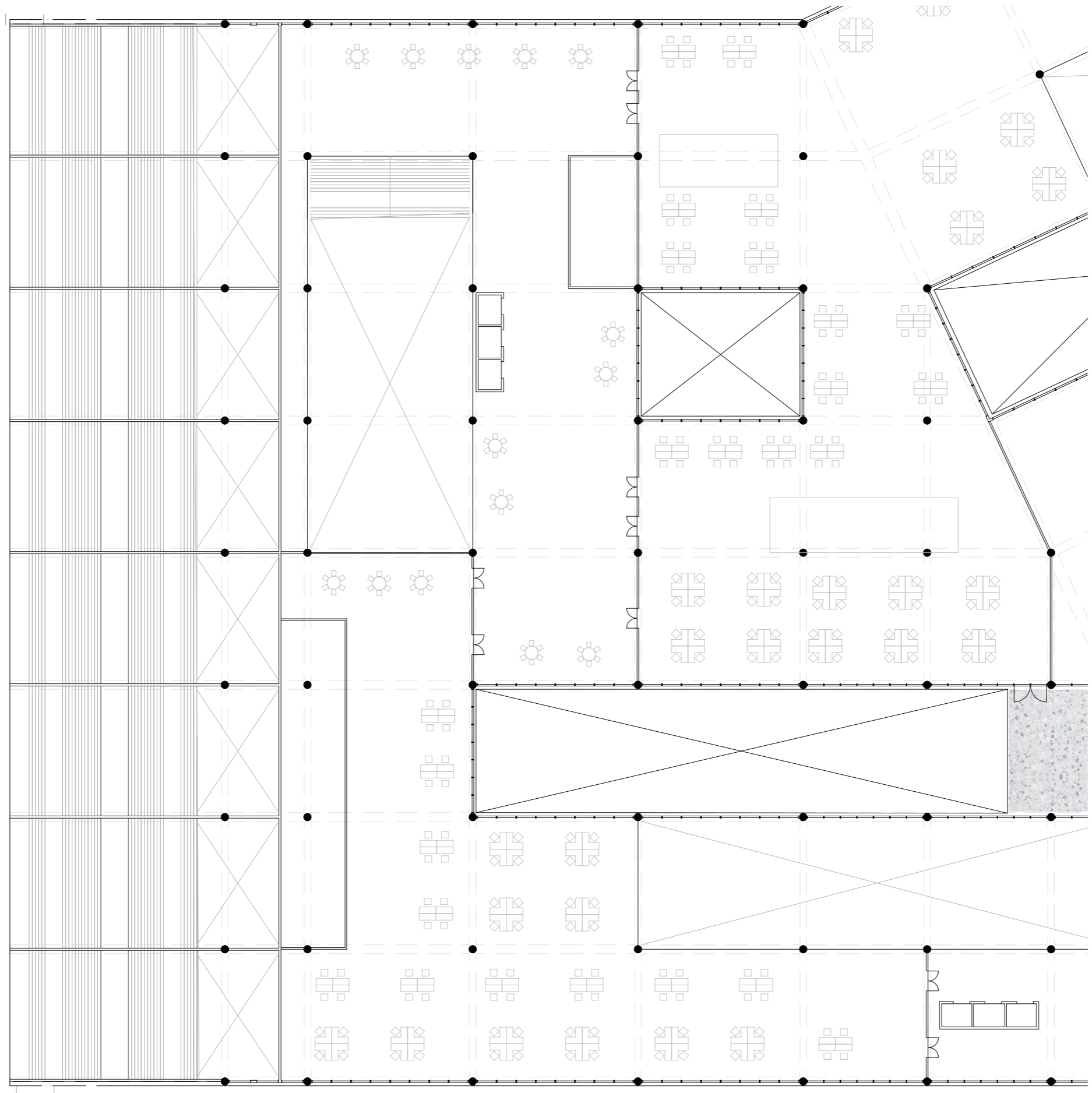






2nd Floor | Zoom In





3rd Floor | Zoom In





