

Mass and Void

An urban neighbourhood in Poblenou

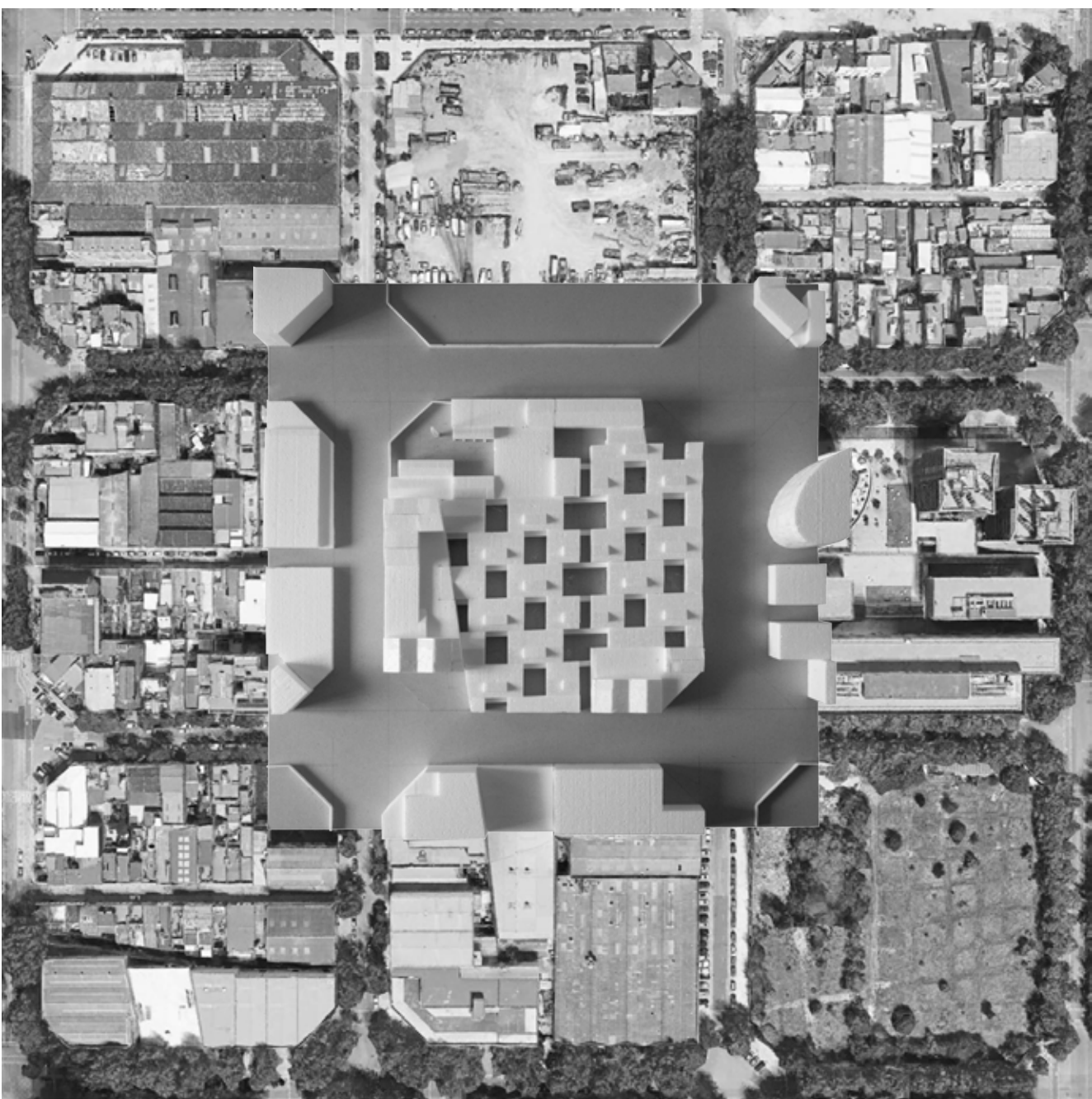
The block is currently very densely built up. Through cut-outs free space for light and air is created. The void courtyards are defined by the mass of the built structure.

The former industrial halls determine the structure of the working and living units and form the core of the block. They are accessed from inside the block and enclosed by the large corner buildings. Those corner buildings offer generous spaces for various public uses. Unlike the townhouses, the corner buildings are directly accessible from outside the block and open up to the city with arcades.

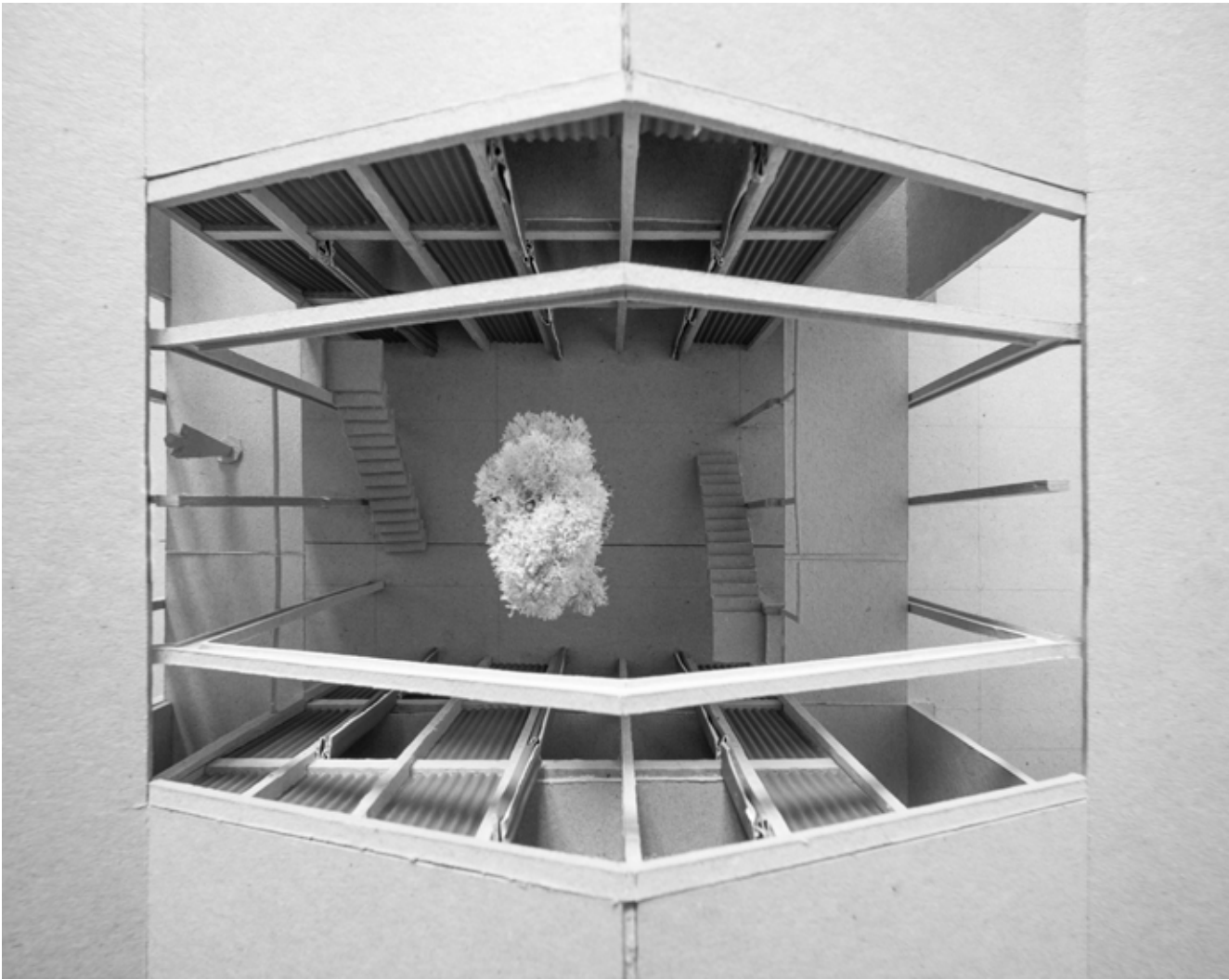
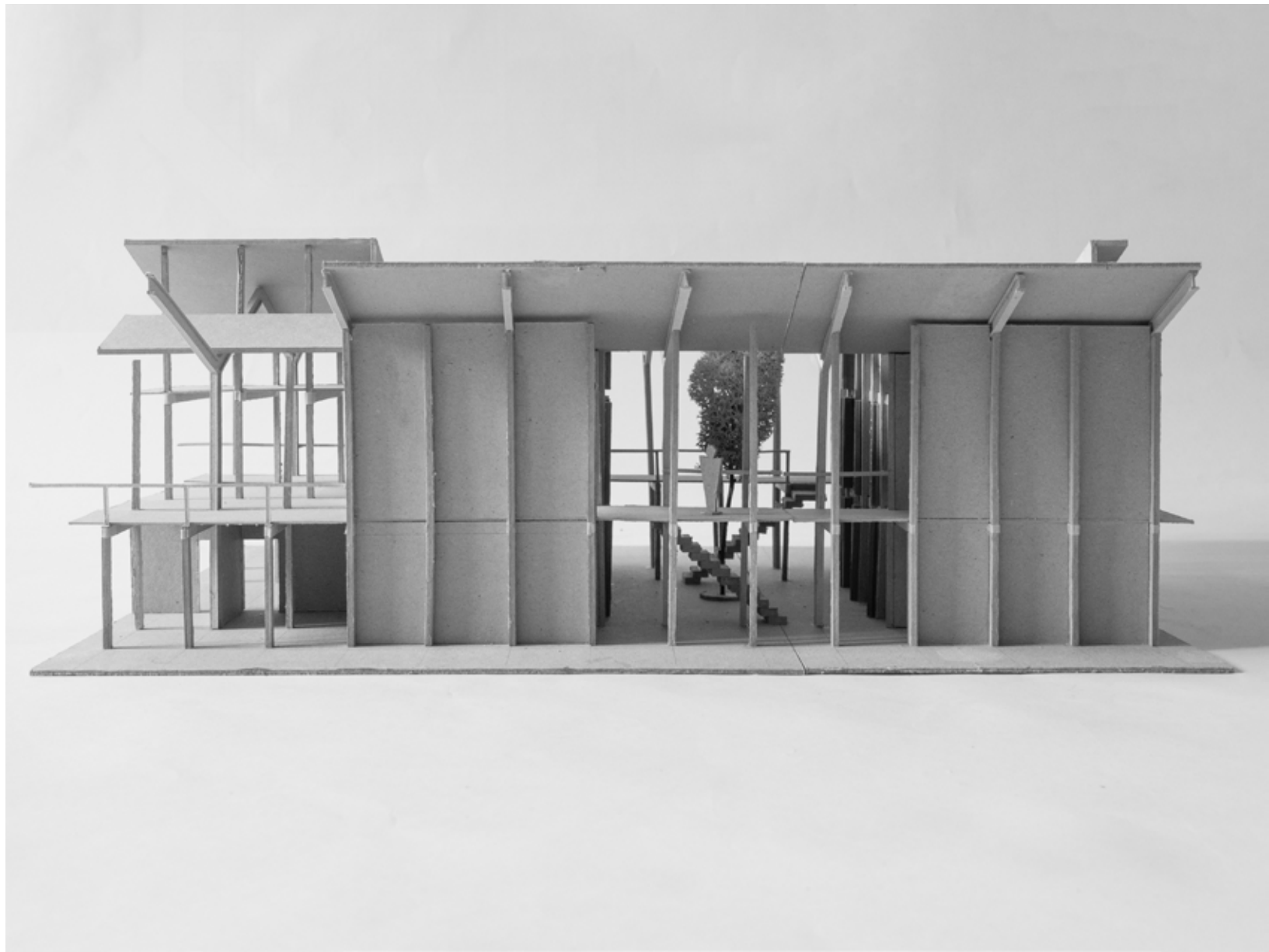
The connection of the townhouses runs along the units on two levels through arcades. They create paths and visual connections and serve as orientation through the large structure. Further visual relationships are provided across the structure thanks to the courtyards and the open central spaces.

An inserted construction divides the existing steel structure into three floors. Working on the ground floor is clearly separated from living on the upper floors. The attic floors are extended by dormers.

The townhouses are divided longitudinally into three sections. The middle section is column-free over a span of six metres. The north-west section is part of the path connection outside of the building. Chambers for ancillary uses are located in the south-eastern part. This dialectical relationship of large, void rooms and the mass of the small, closed ones, structures all the floors.



cityblock | model and context 1:200

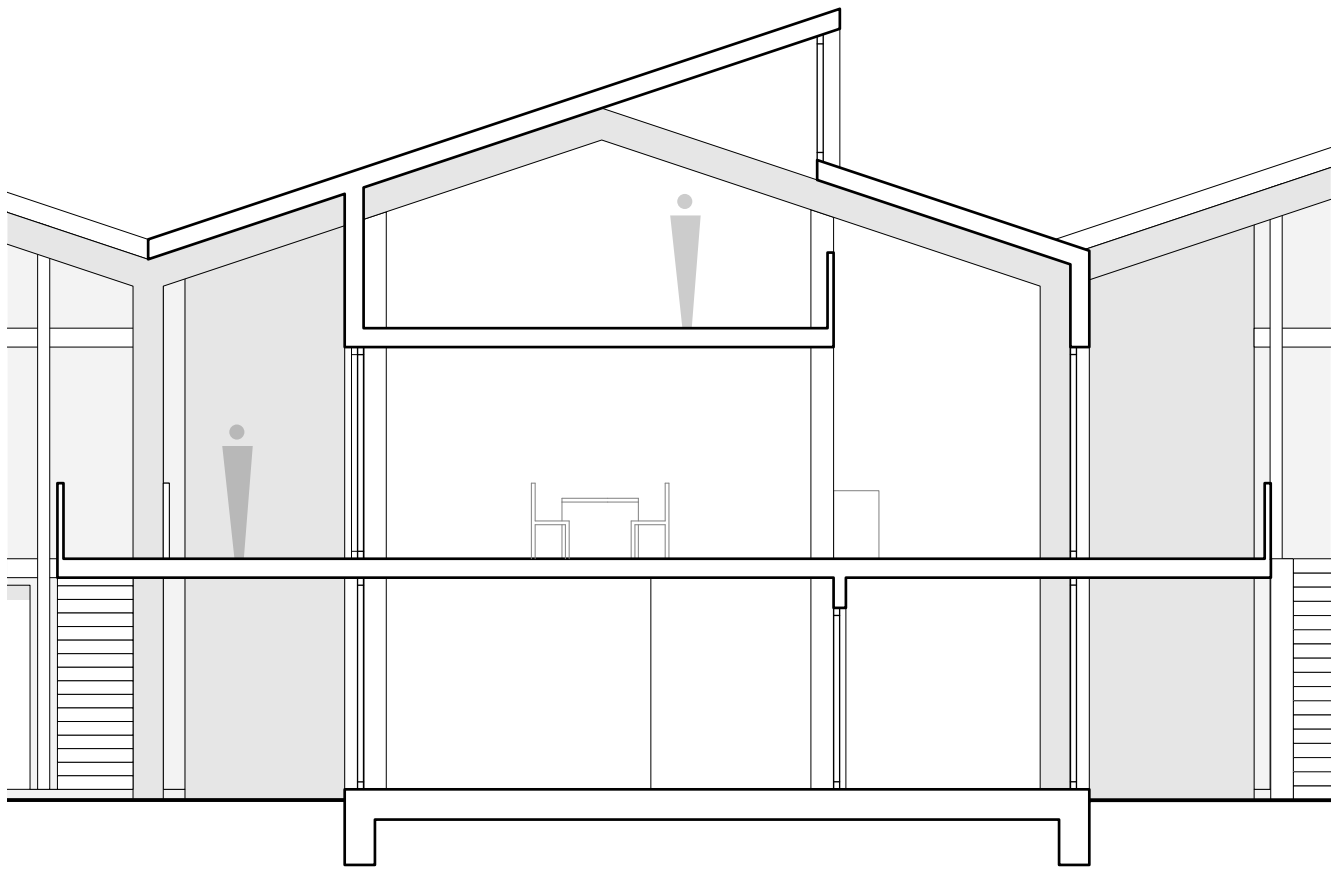


townhouse | model 1:50

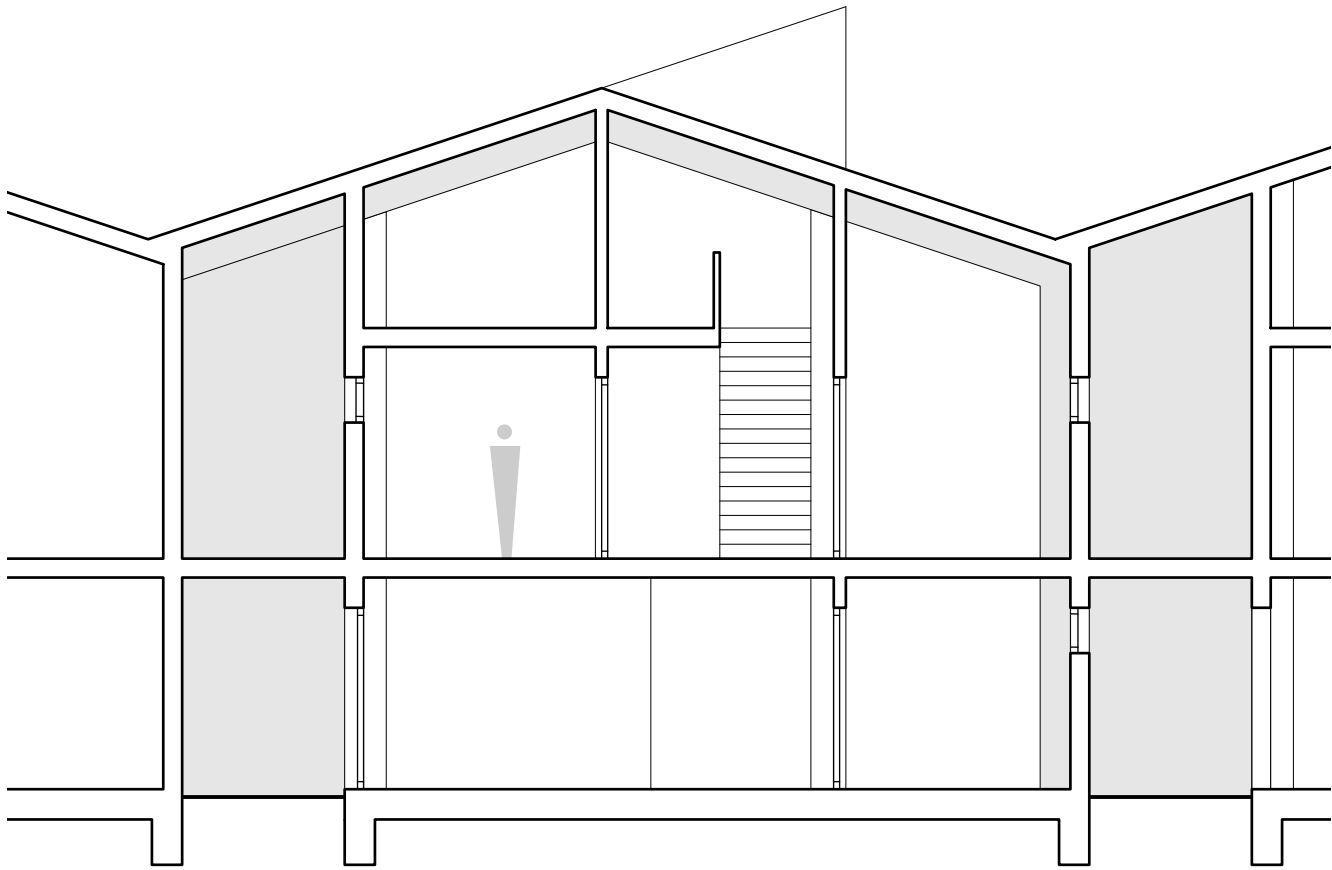
townhouse | model 1:50



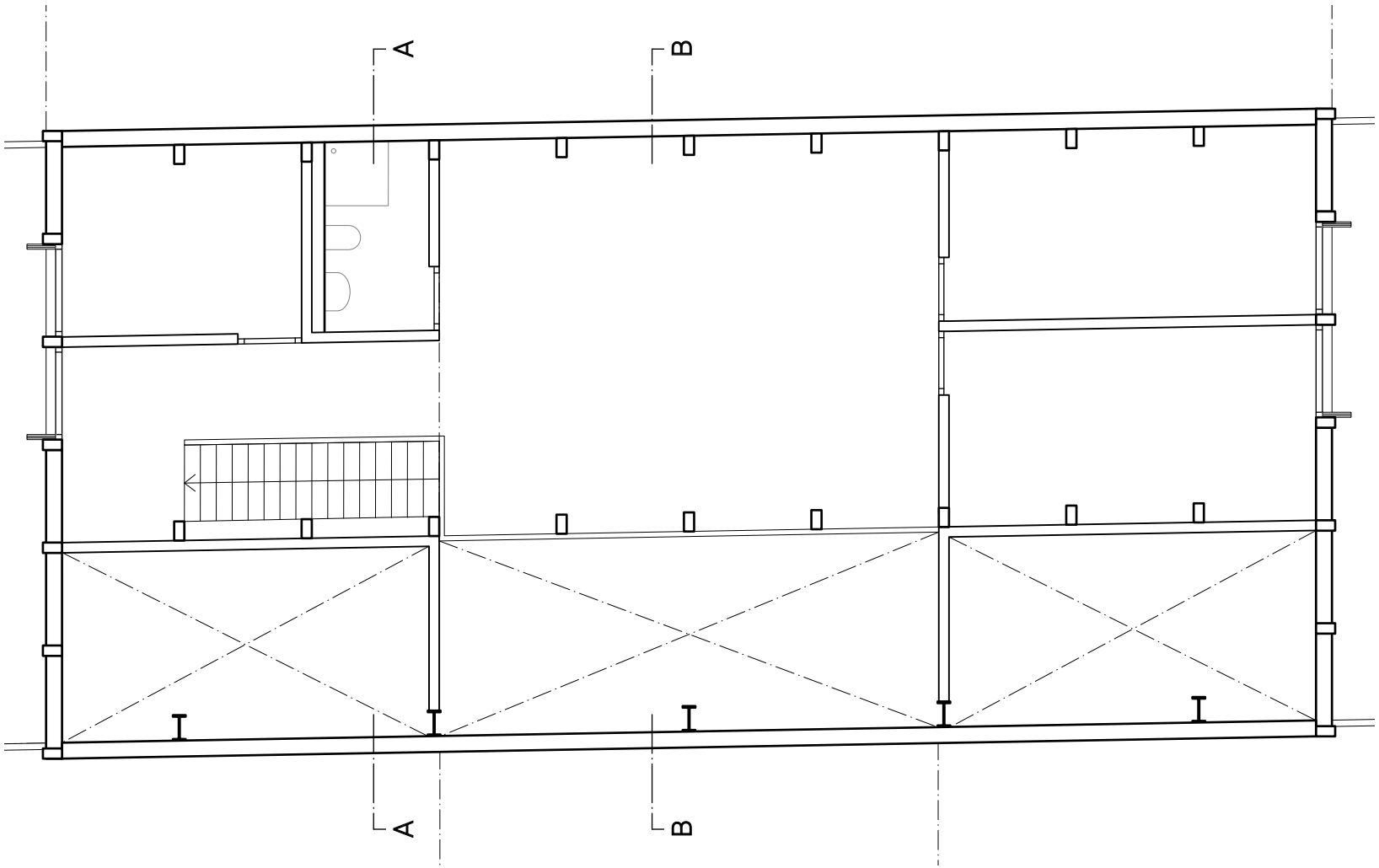
townhouse | model 1:50



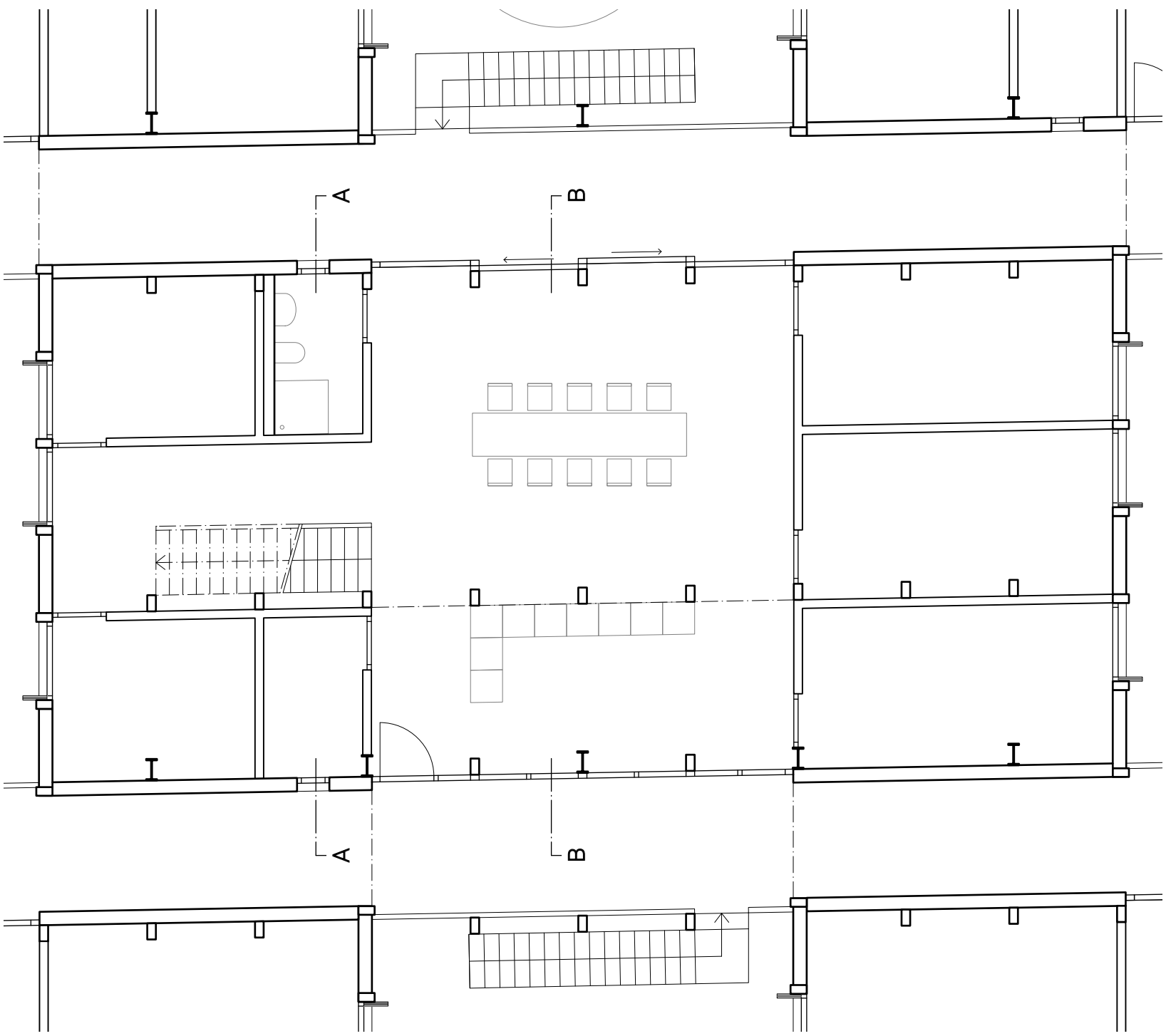
townhouse | section B-B 1:100



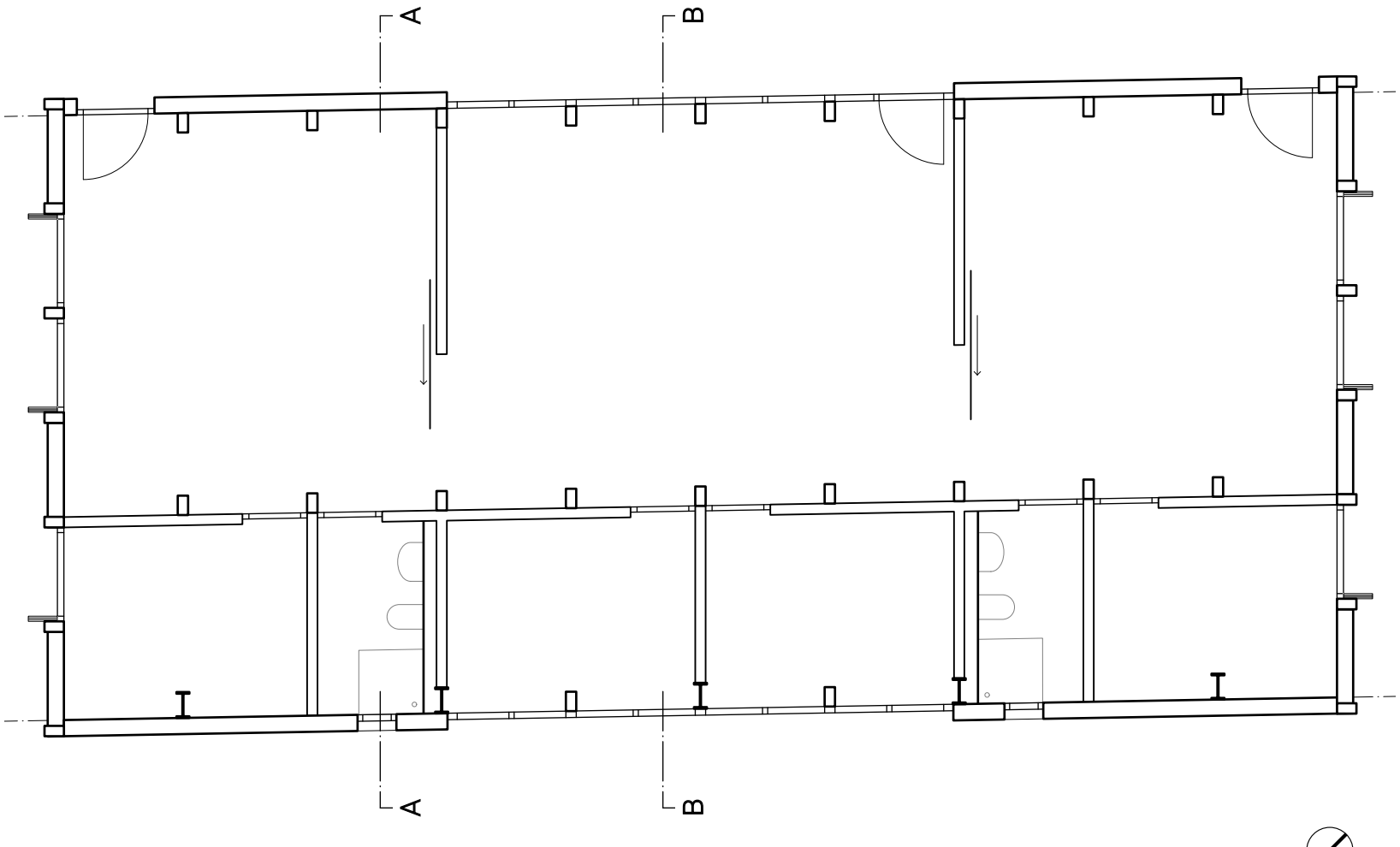
townhouse | section A-A 1:100



townhouse | attic floor 1:100

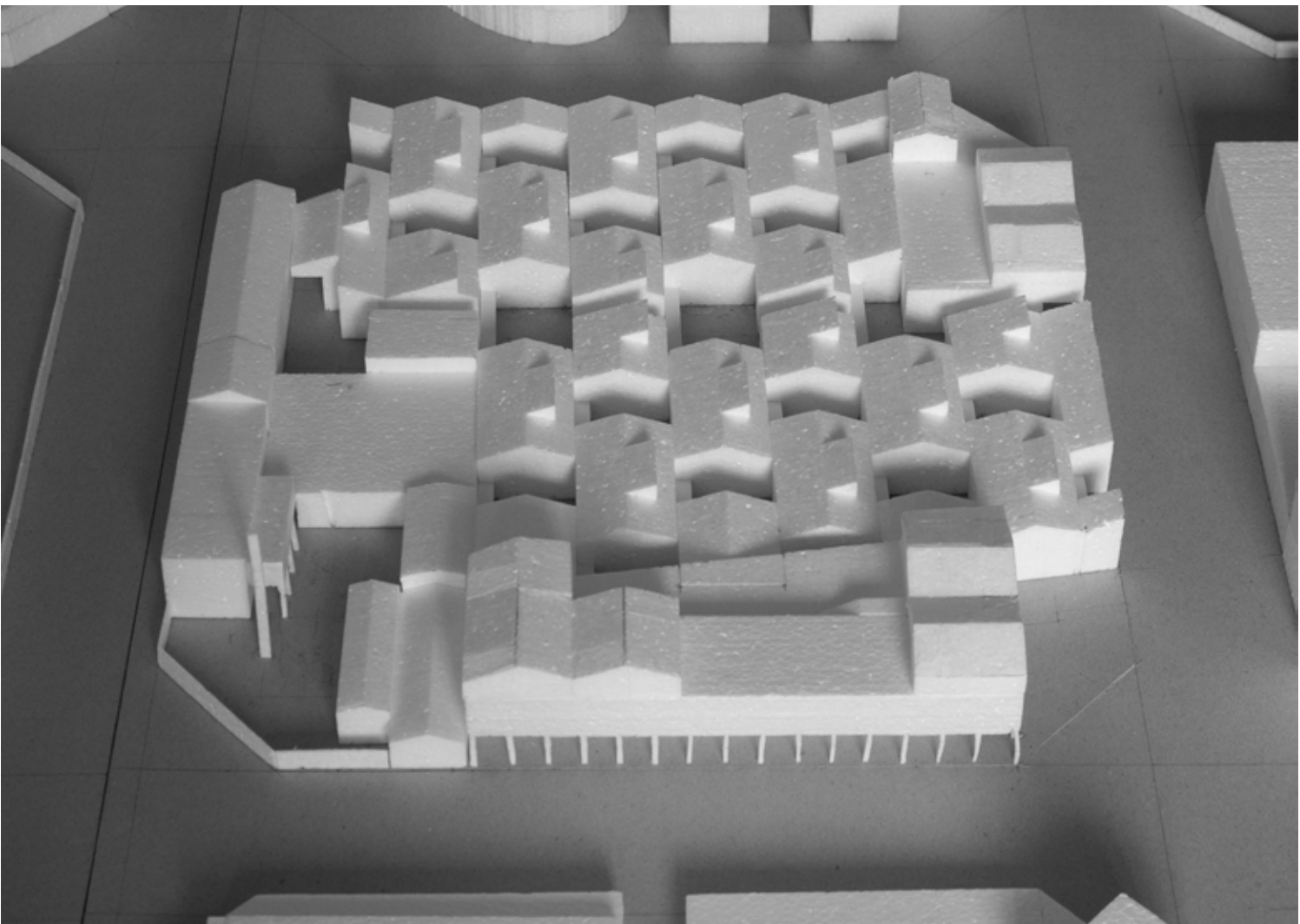
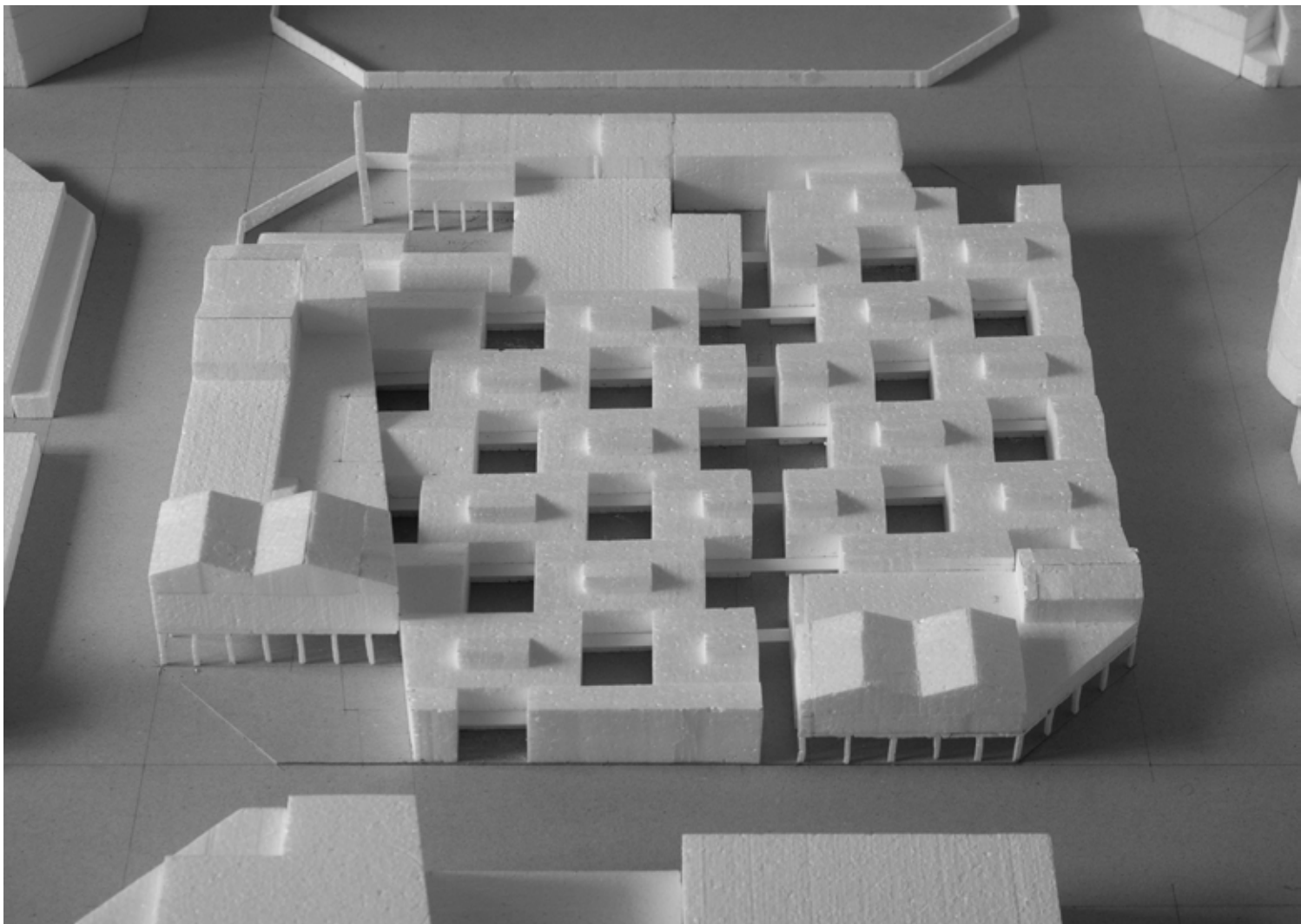


townhouse | first floor and connection paths 1:100

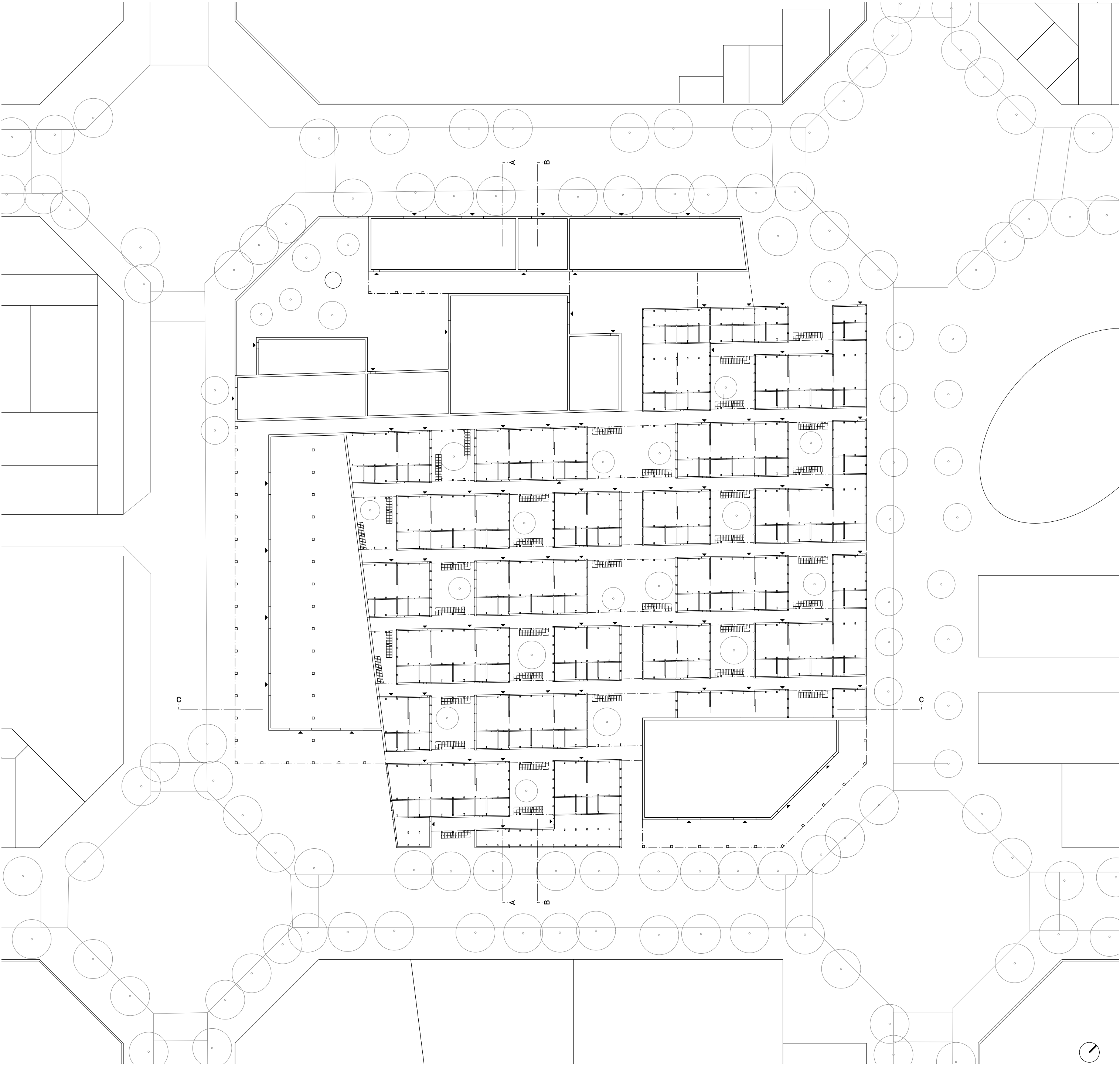


townhouse | ground floor 1:100



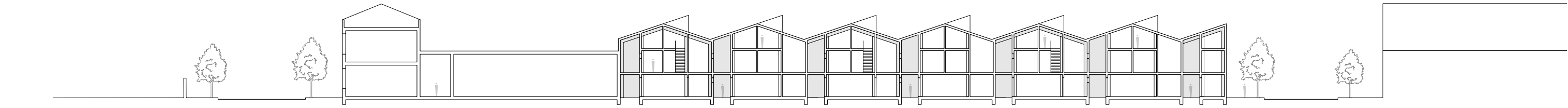


cityblock | model 1:200

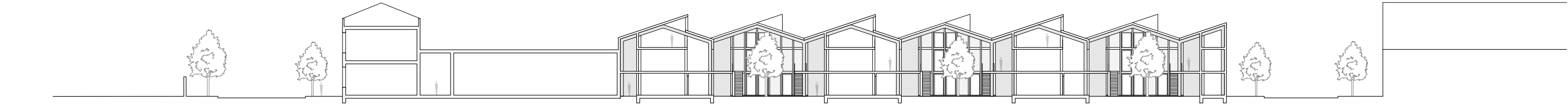


city block | ground floor 1:500

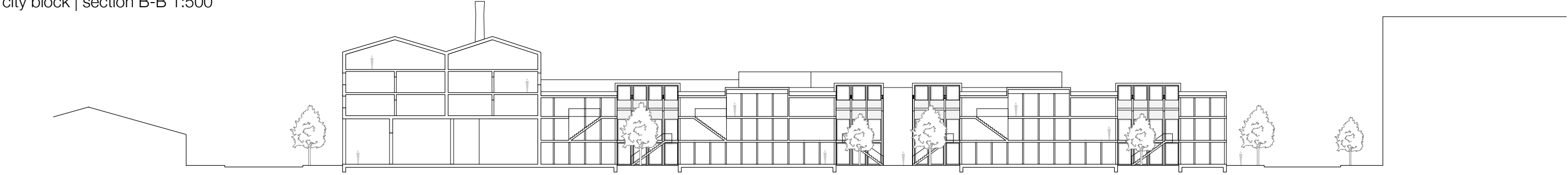




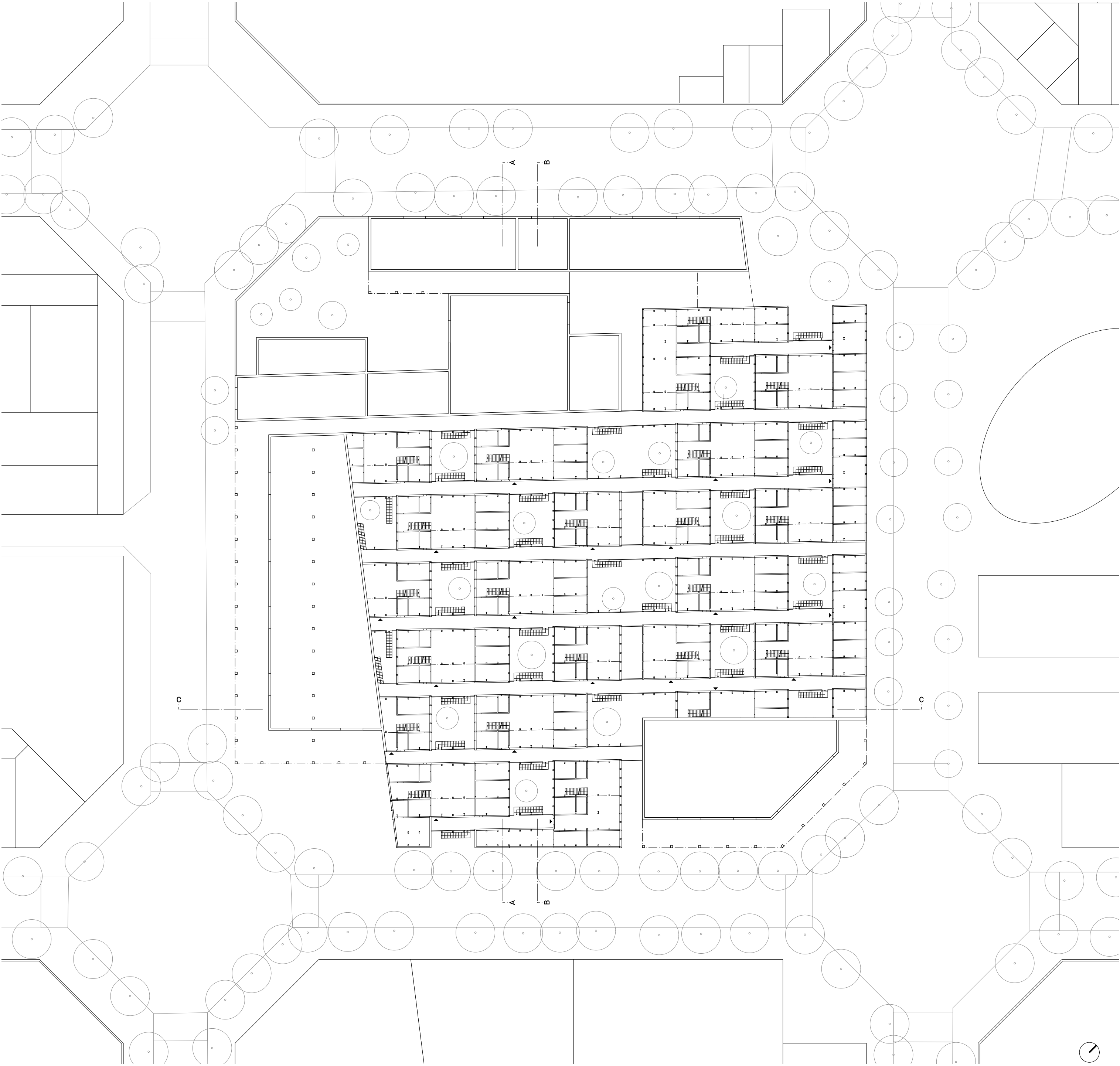
city block | section A-A 1:500



city block | section B-B 1:500



city block | section C-C 1:500



city block | first floor 1:500

