



#### I creative coexistence I

My quarter is based on two back-to-back rows which are oriented and open to the southwest. The inviting square with restaurants and bars should attract visitors and lure them from there through the quarter.

With only three forms, two alleys are created that playfully meander through the neighborhood. Along the alleys, the commercial sector fades out more and more, making room for residential space.

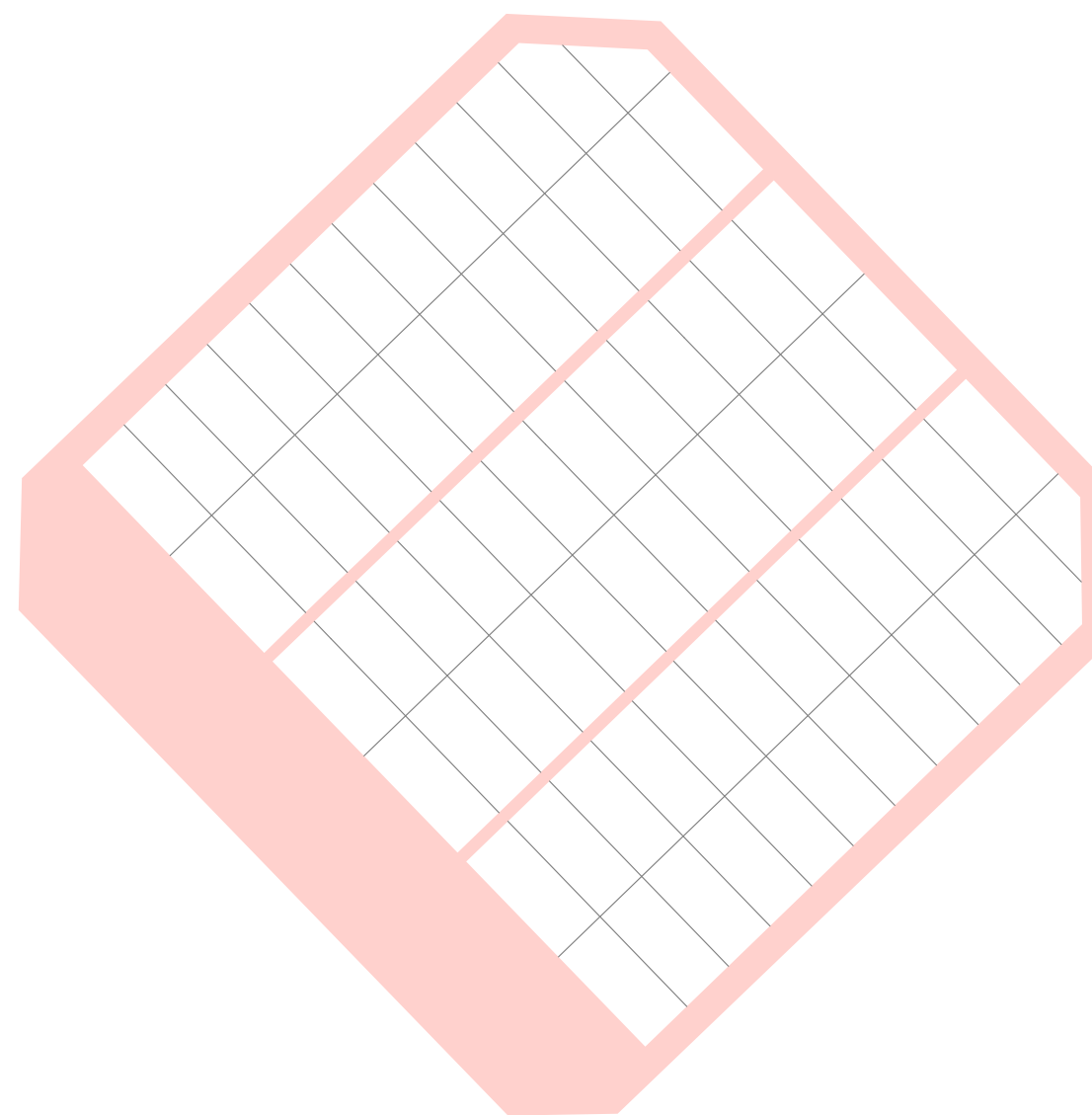
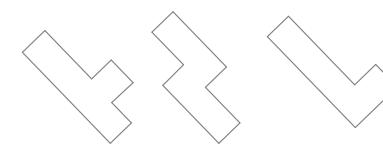
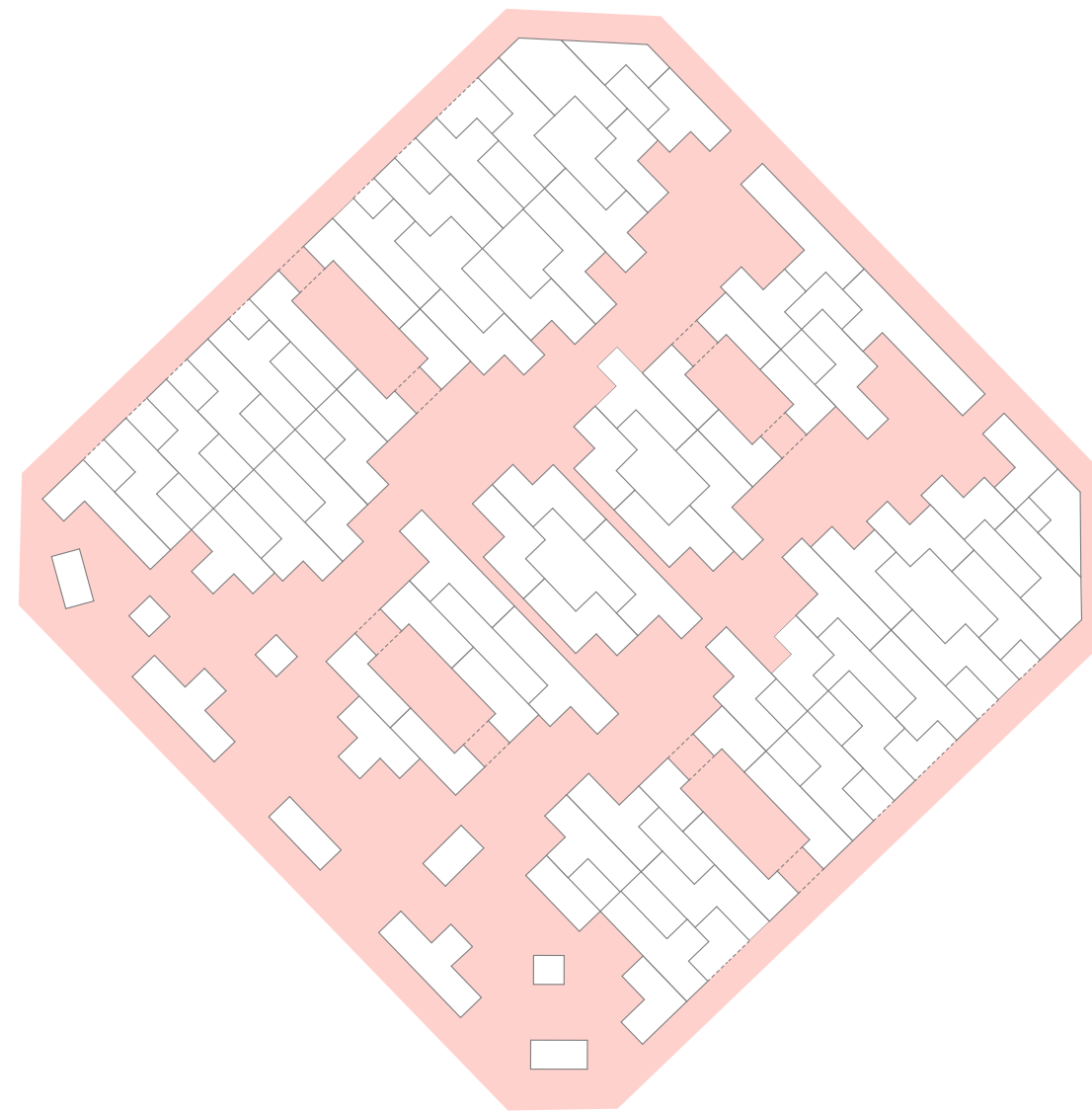
I distinguish between 2 types of houses. On the edges are studio houses with characteristic garage doors to welcome the customers. The second type of house is placed in the alleys, and creates a pleasant distance to the public space through a plateau. In both types, the living area is located on the upper floor, while throughout the house rooms are formed by differences in level. The wooden folding shutters, which are located on the balconies and towards the inner courtyard, are characteristic and unifying for the quarter.

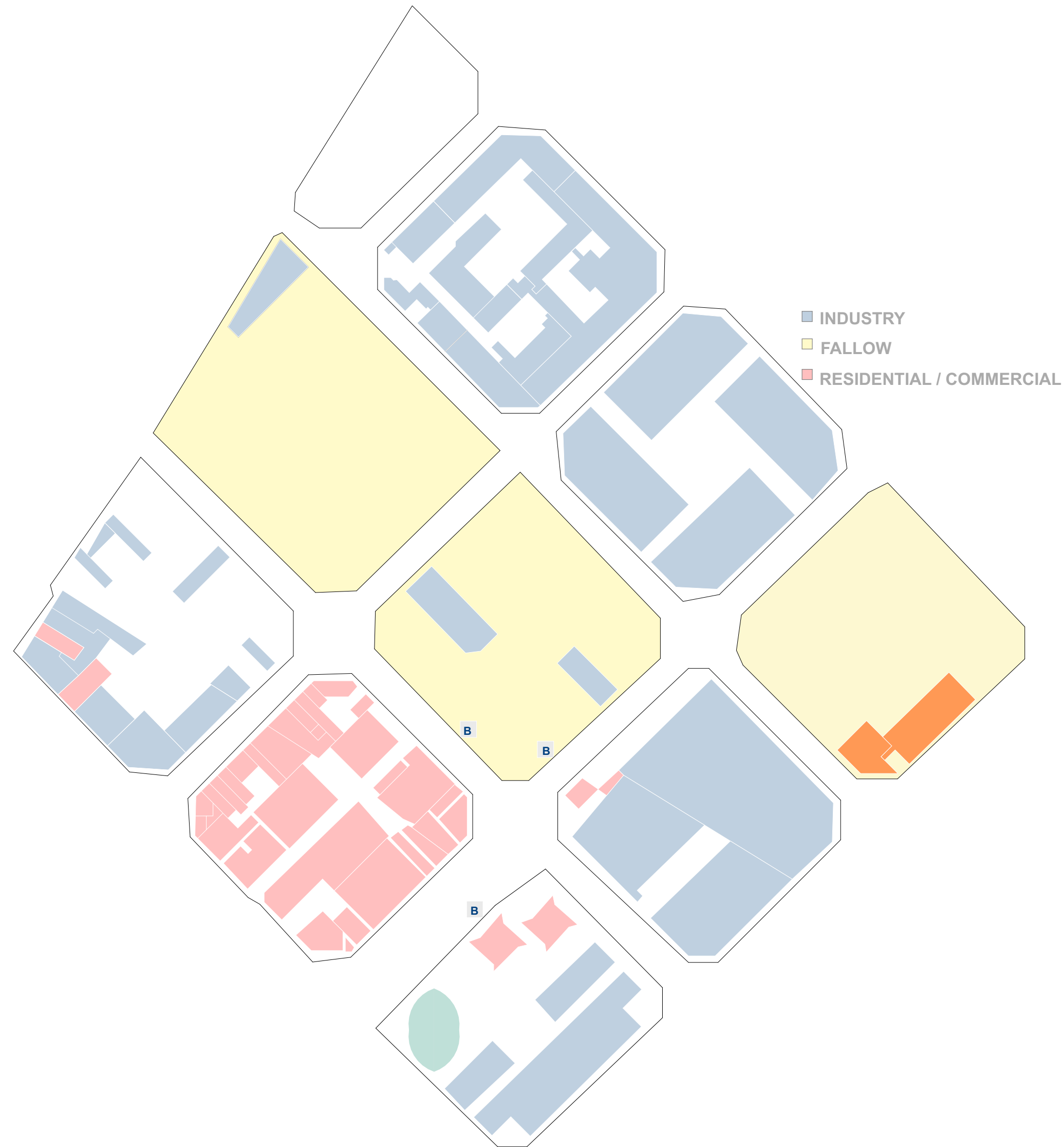
The whole quarter is to form a new working and living place for young people, students, families and artists. The focus is on exchange and creative coexistence, which is made possible by the residential communities.



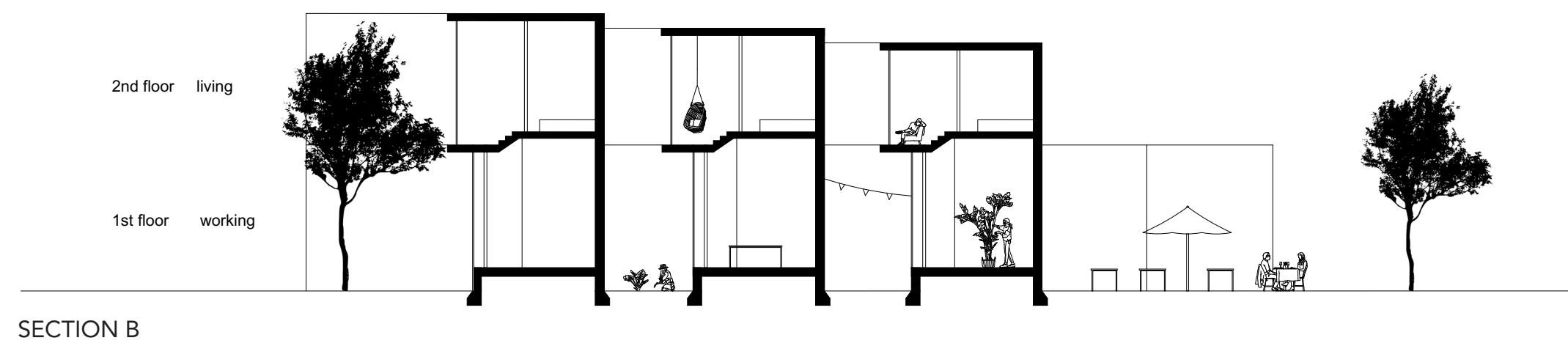
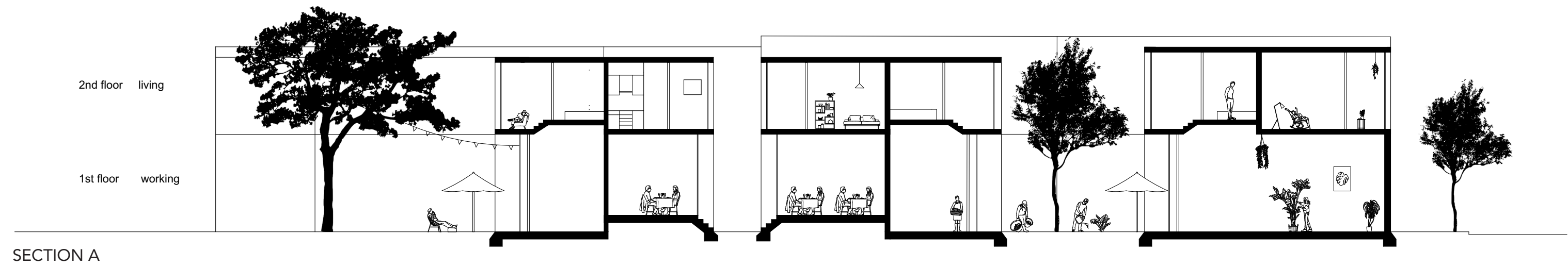
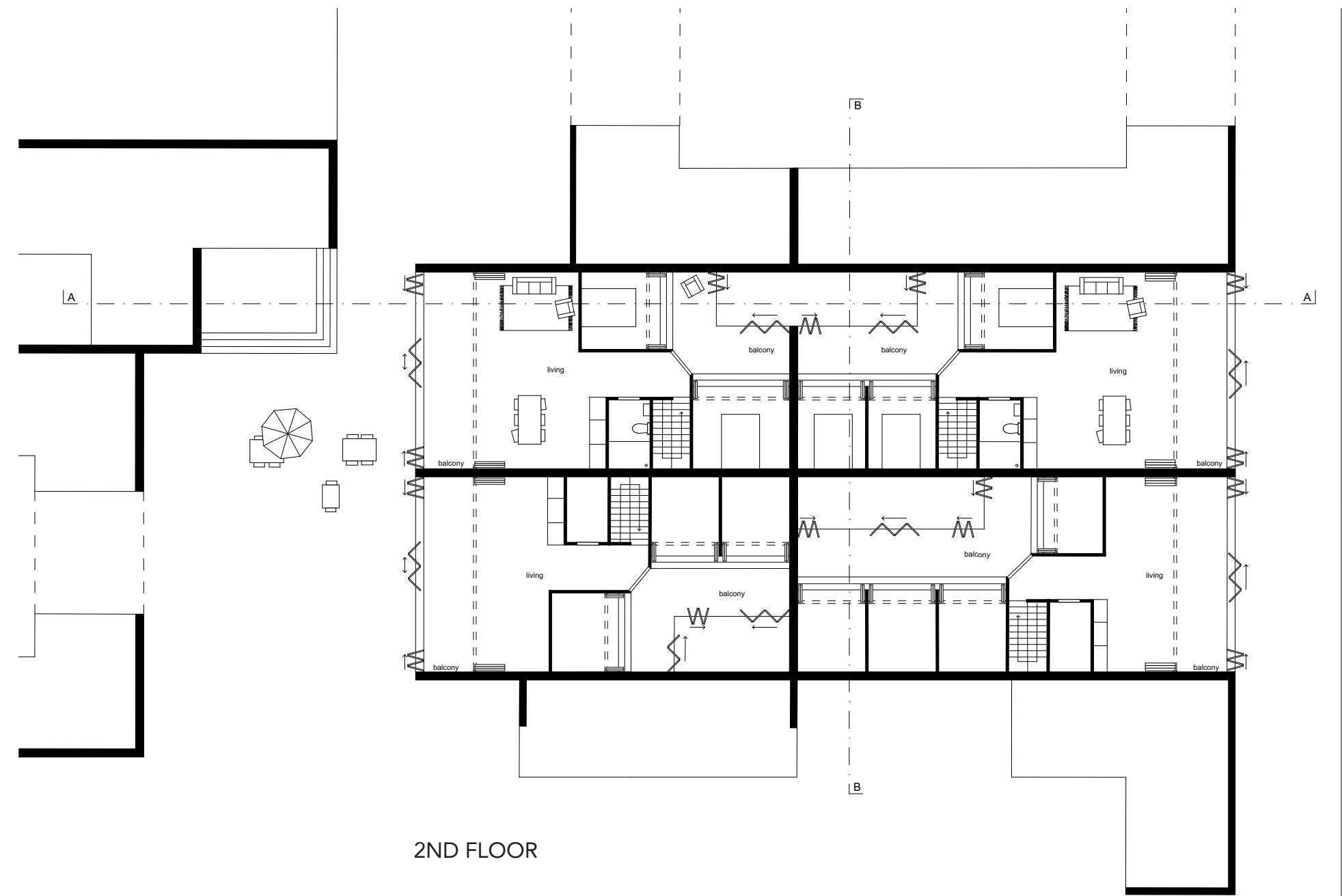
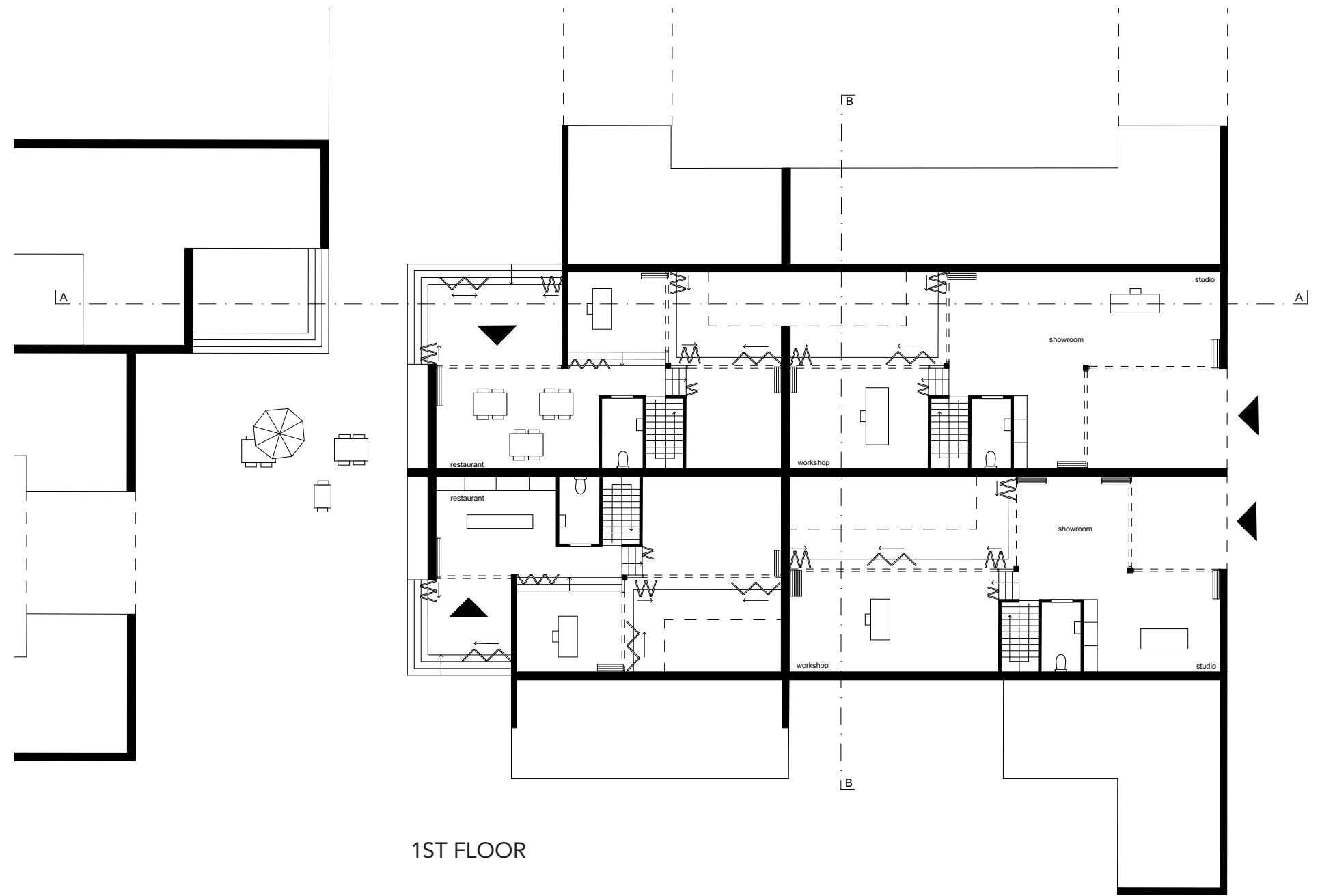
FLOOR PLAN

SECTION A





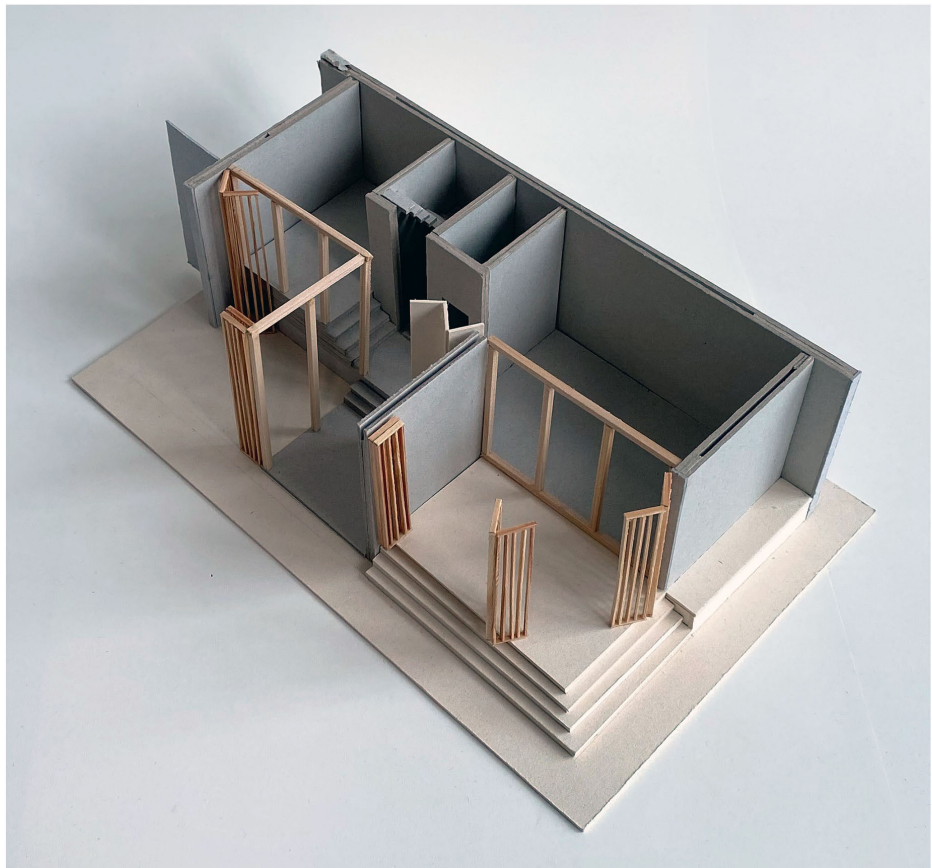








MODEL I 1:50











zoom-in | alley



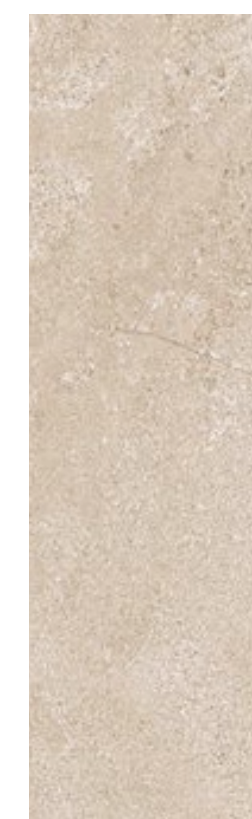
zoom-in | atelierhouses with garagedoors



zoom-in | balcony



exposed concrete

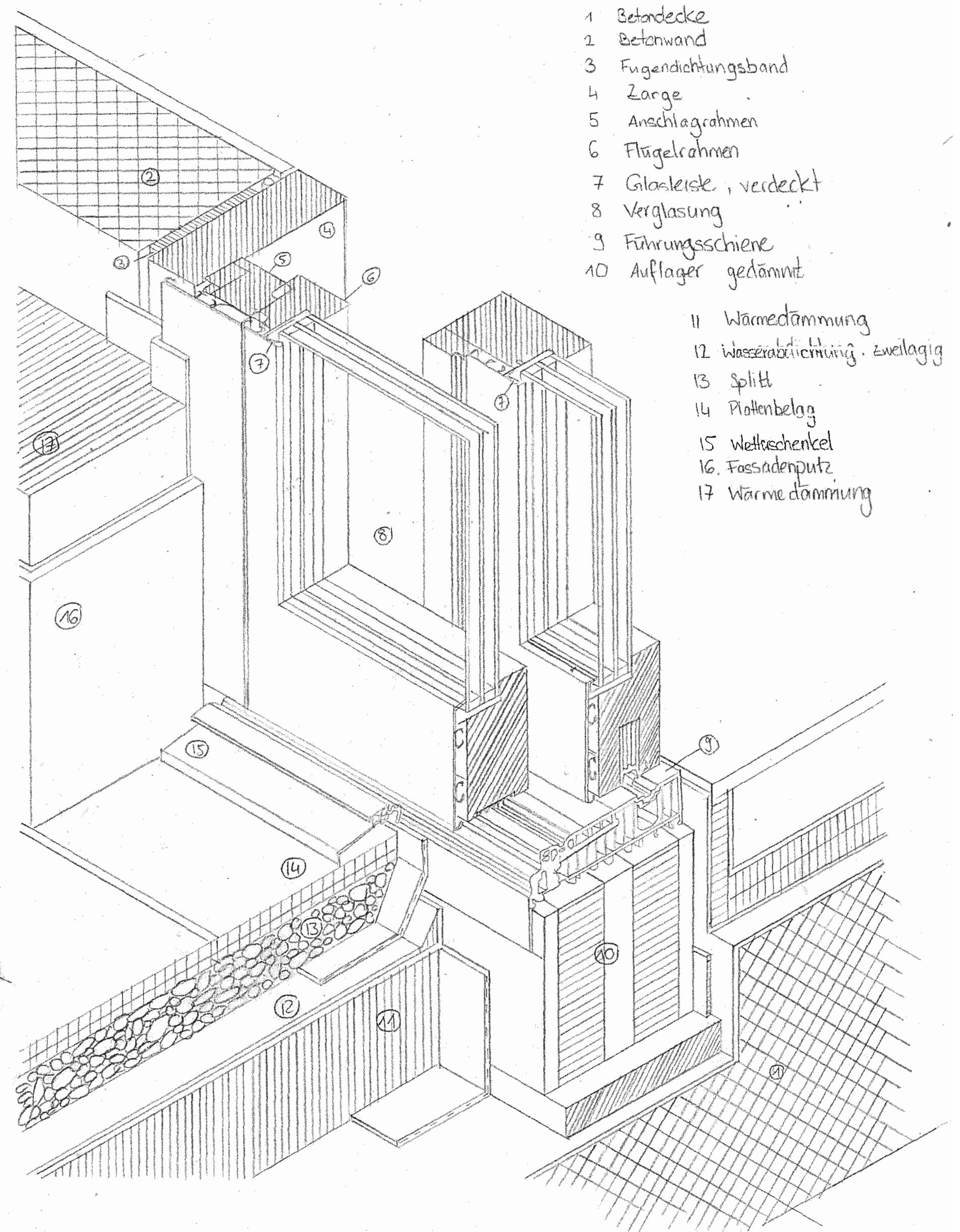
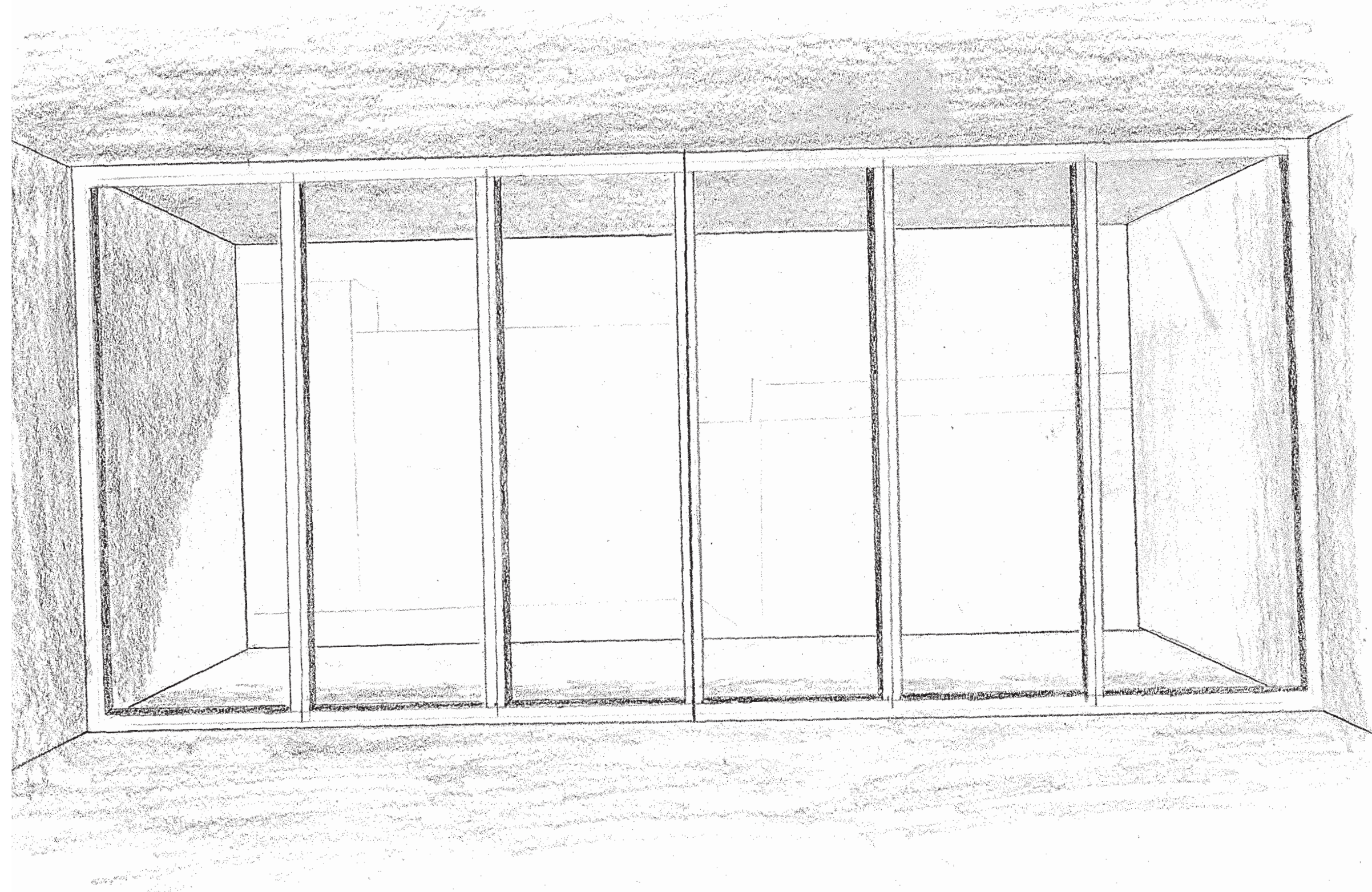


clinker



wooden folding shutters





Übung Fenster: Innenraum-Perspektive und Axonometrie 1:10

StudentIn: KERN PAULA 20-912-010