

LEVEL + ABOVE

QUARTIERDEE | JONAS MÜLLER | FS 2021 | ATELIER FISCHER | 28.05.2021

The existing block is characterized by industrial buildings. They have the typology of a warehouse. These buildings will be left as they are, and an inner courtyard will be cut into them. This creates an open block perimeter. Inside the block perimeter are two large-volume buildings. The round stair towers are inserted in the peripheral buildings. They support a second urban level.

The block perimeter on the level floor is broken through four times. Twice to ensure the entrance to the neighborhood and twice to create a forecourt for the large building volumes in the courtyard. These volumes define two rectangular squares. Those are connected at the corner with a short alley.

In the section, the motto of my design, „Level and Above“ becomes apparent. The dialectical relationship forms two urban levels. The ground floor is completely assigned to work. The upper floor serves for living. The columns are the connecting element and processional path between working and living.

The ceiling shades the ground floor. The lighting is peripheral and only where necessary through round openings in the ceiling. The steel structures in the openings are the public access between the ground and upper levels and create visual connections between the number of levels.

In the place of the openings in the ceiling, squares develop on the upper living floor. These are connected by narrow alleys between the buildings. The upper floor exhibits the type of row house development with patio courtyards. The patio courtyards are formed as gaps in the row houses. They are arranged in such a way that each living unit has at least two free facades.

The townhouse as part of my block is divided into 3 units. The existing working hall on the ground floor, the living unit on the upper floor and the connecting stair tower. The two-story living unit is oriented towards the patio courtyard. Facing the alley, the facade opens sparsely with an entrance and ribbon windows on the upper floor. The over-height living hall receives additional light through the shed roof structure.

New
STAIR STRUCTURES

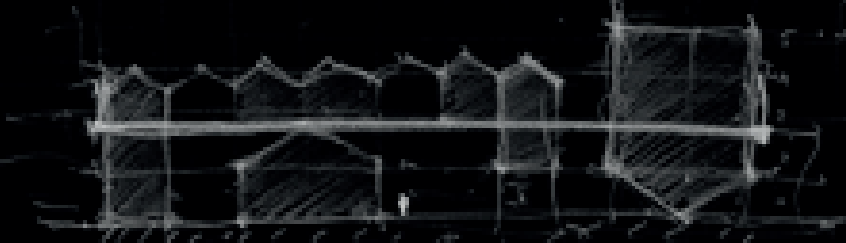
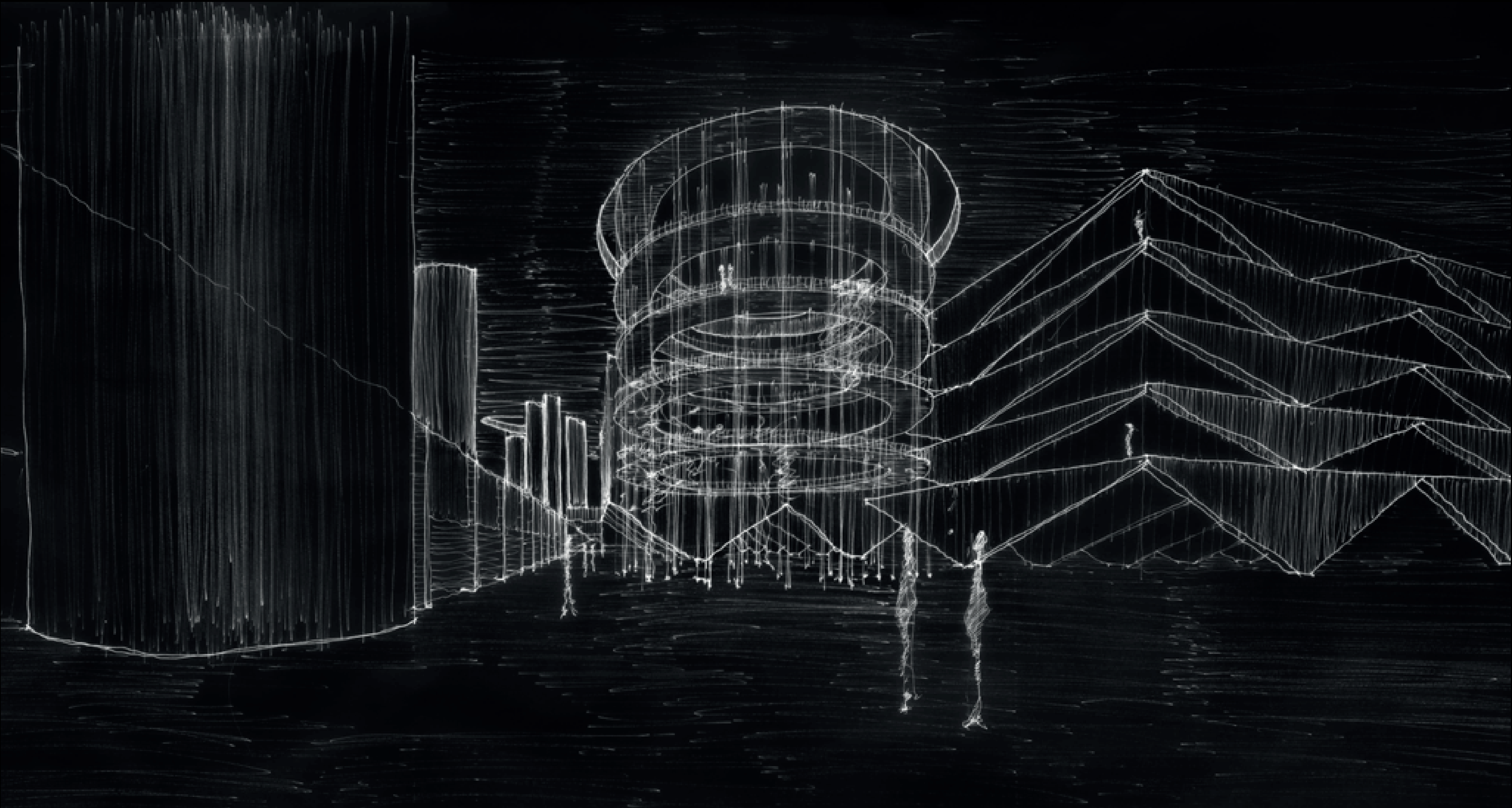
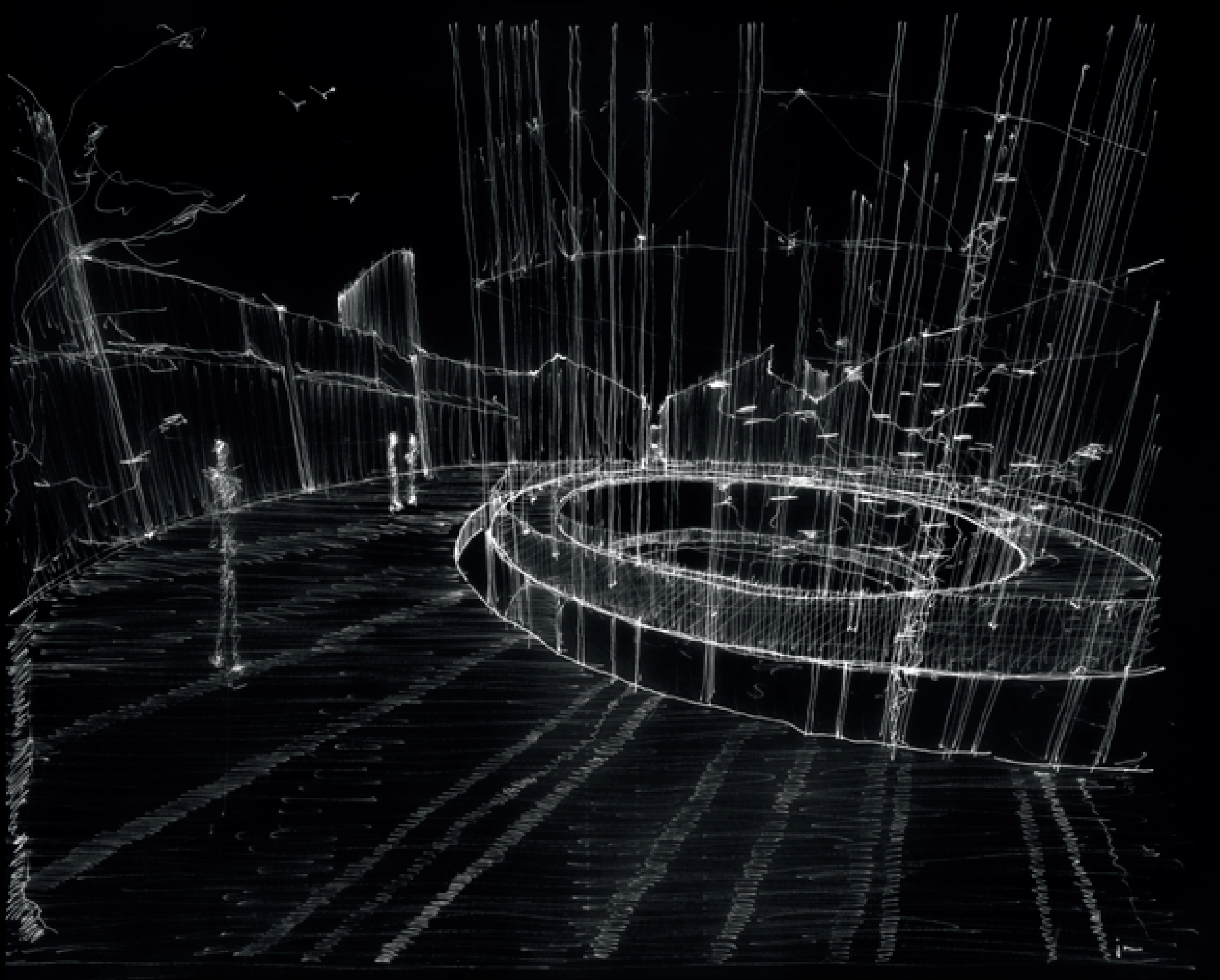
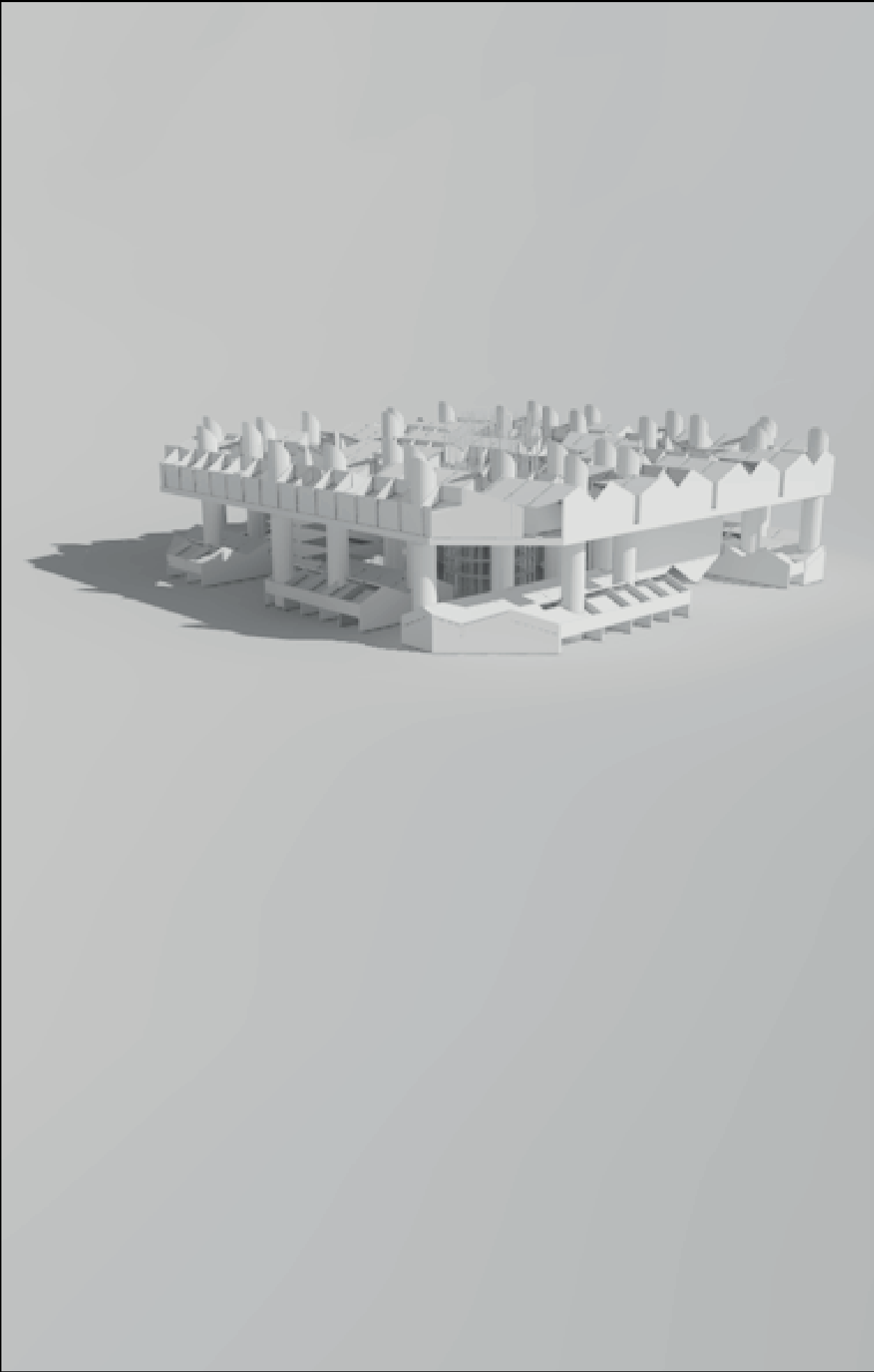
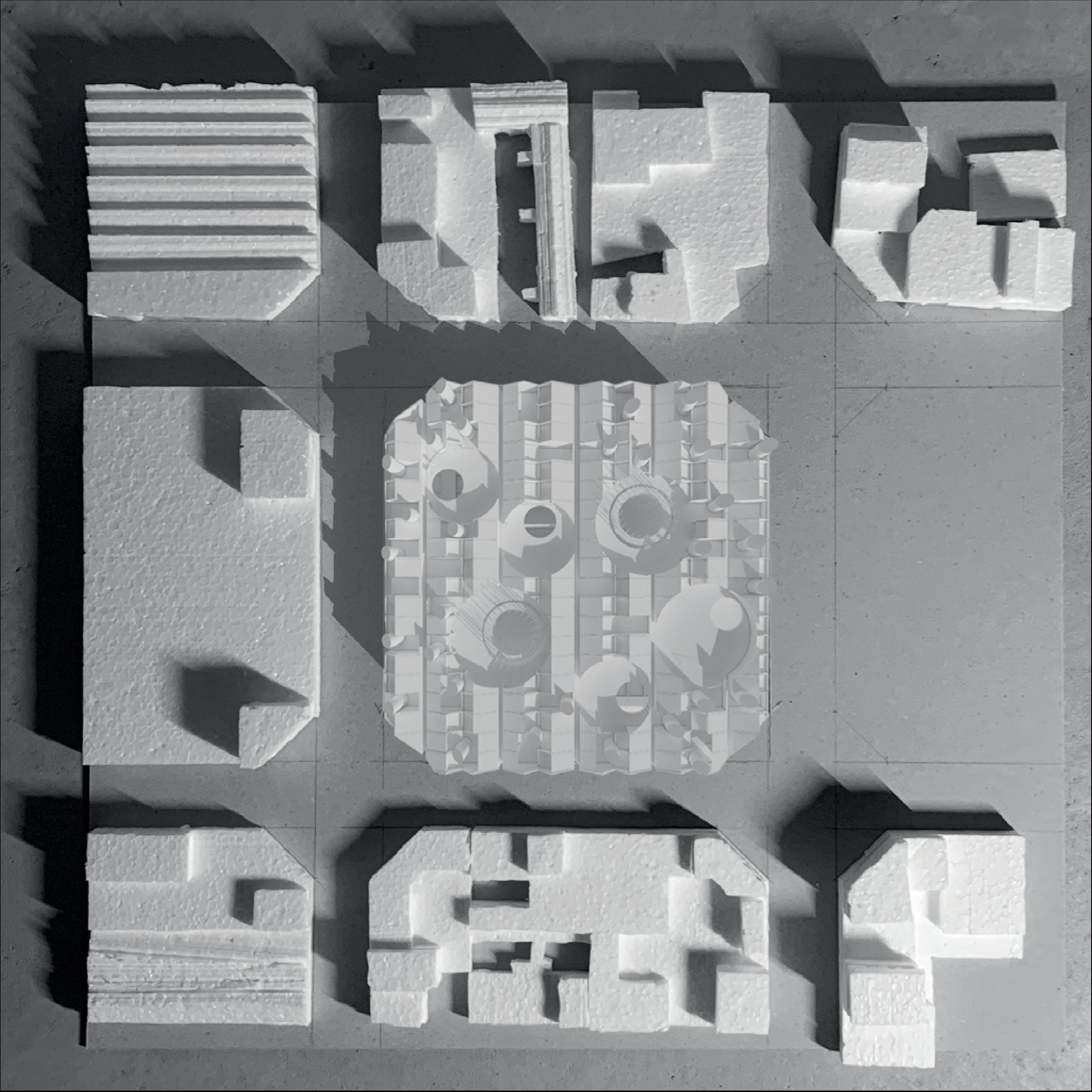
New
Row Houses
ABOVE

NEW LARGE VOLUME
BUILDINGS
LEVEL

New
STAIRTOWERS

EXISTING
WAREHOUSES

AXONOMETRIC DRAWING 1:500

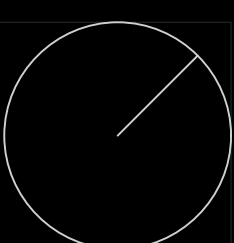


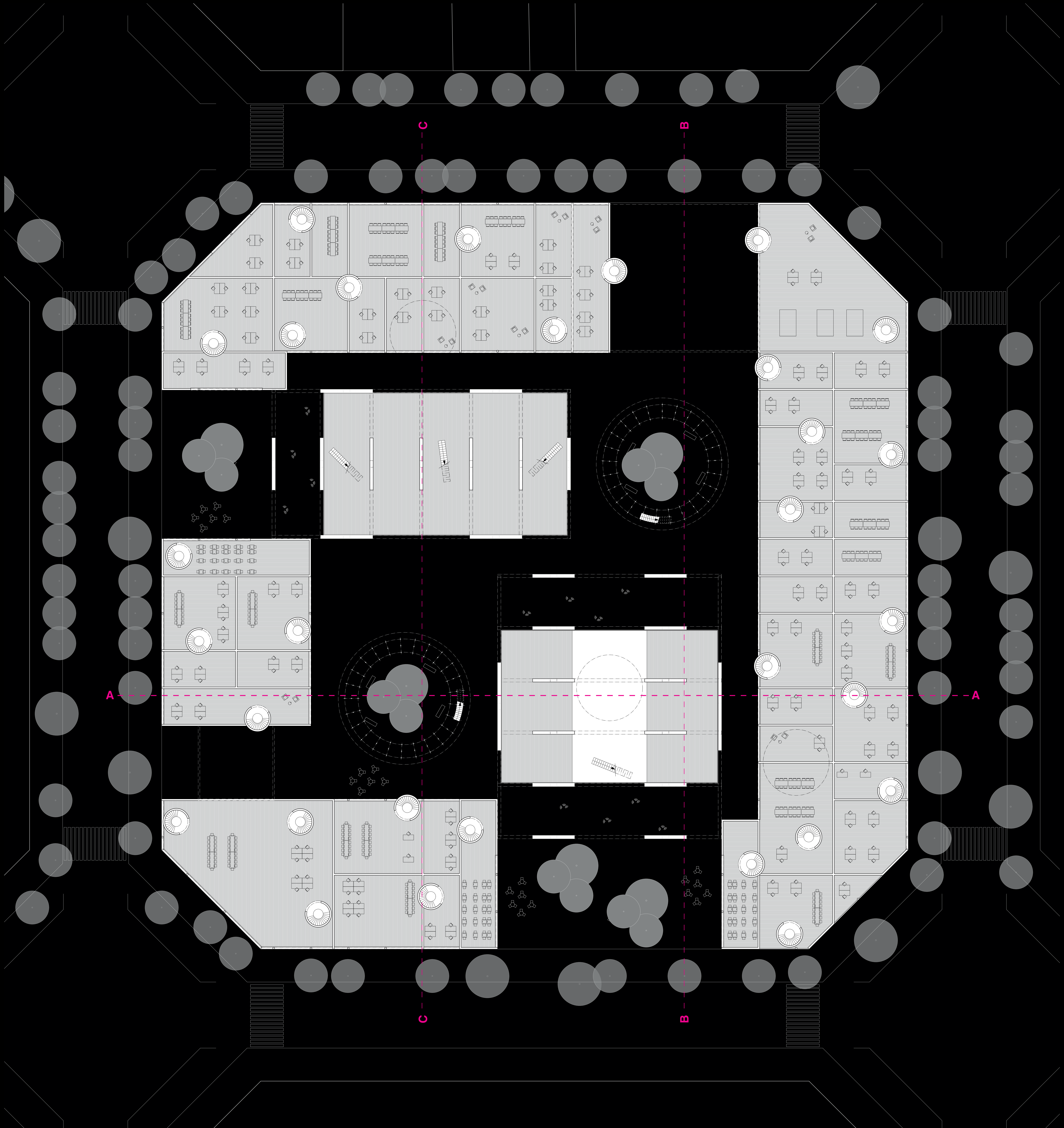
CITY BLOCK

QUARTIERDEE | JONAS MÜLLER | FS 2021 | ATELIER FISCHER | 28.05.2021

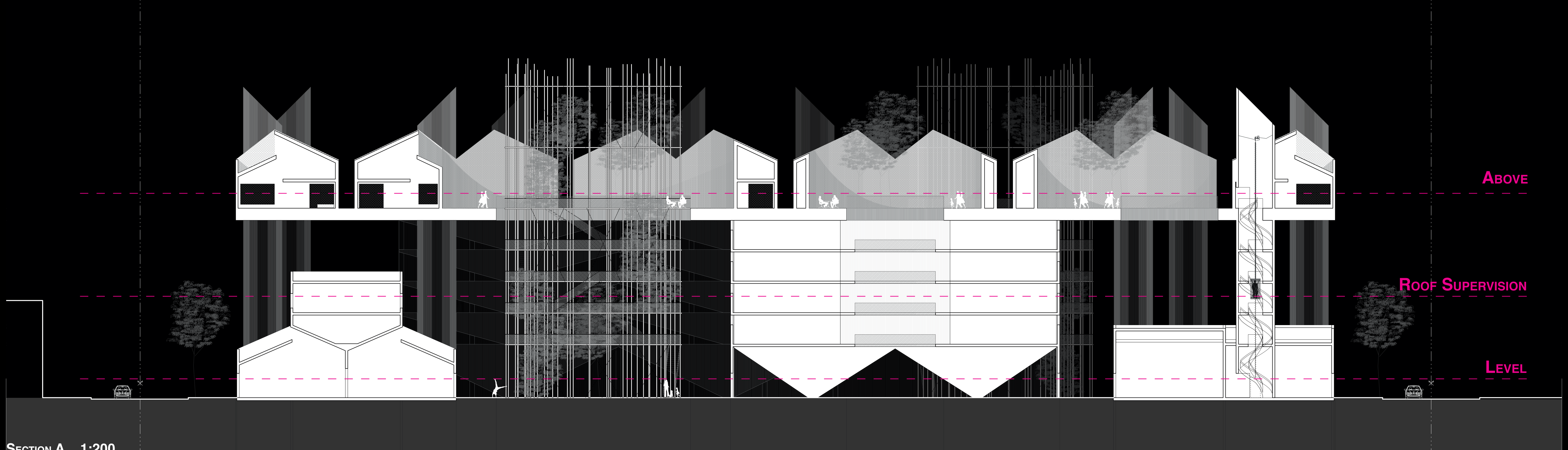


0 10 20 50

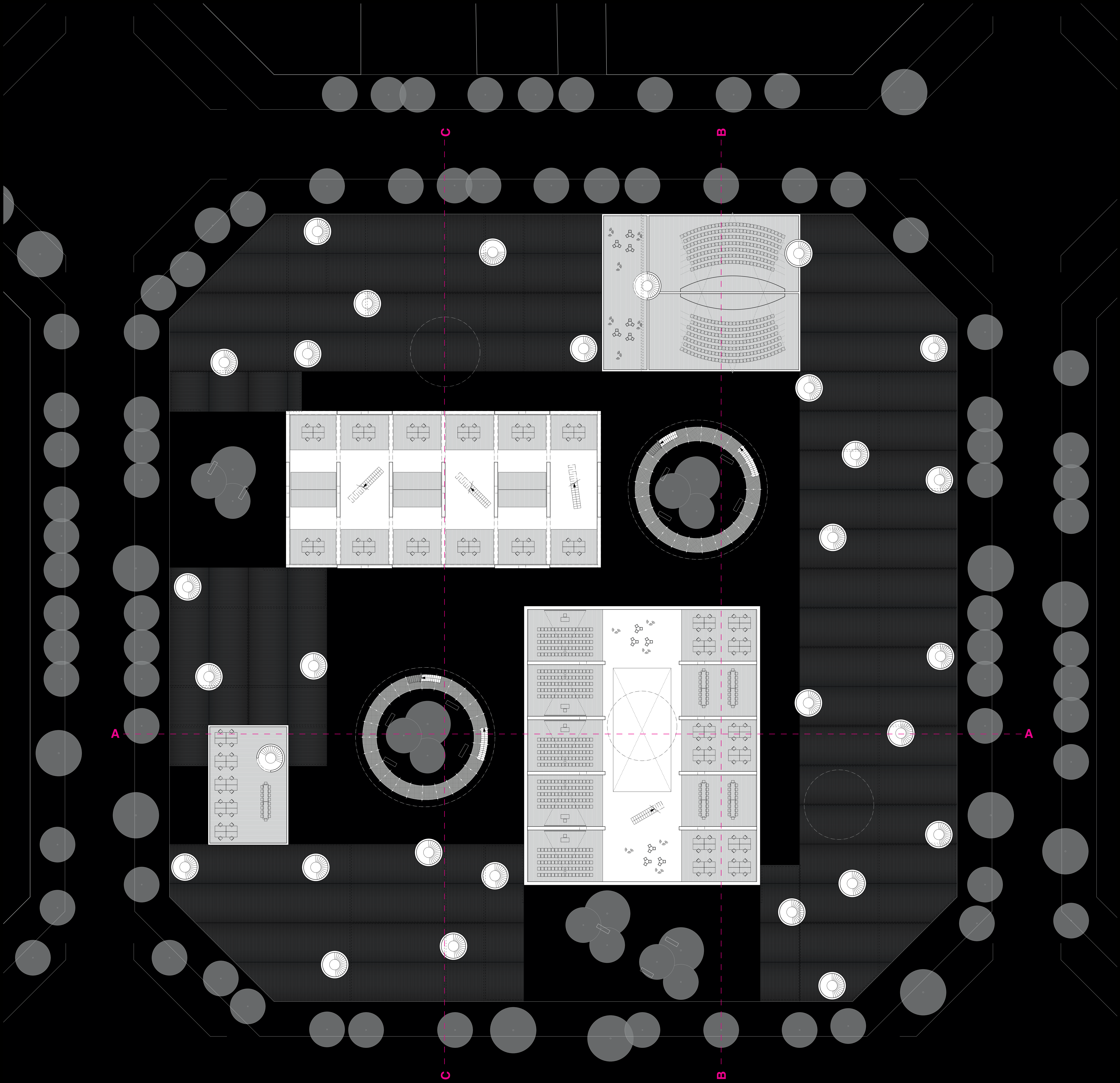




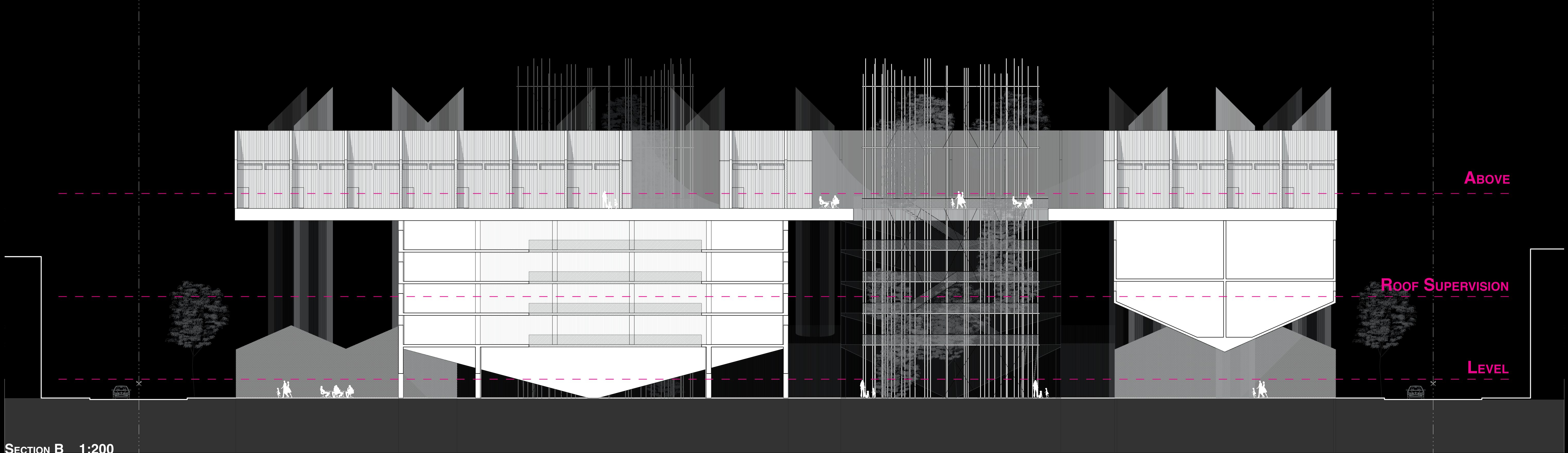
FLOOR PLAN LEVEL 1:200



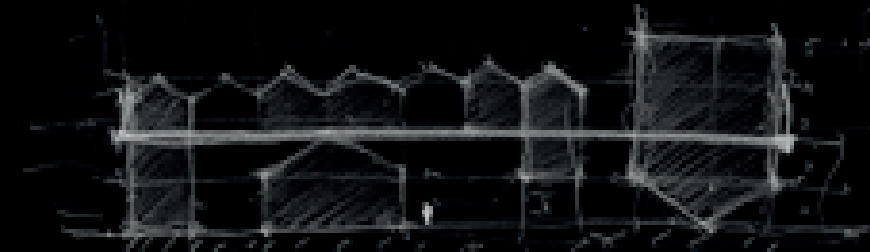
SECTION A 1:200



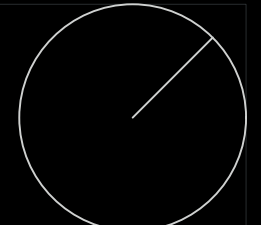
ROOF SUPERVISION LEVEL 1:200

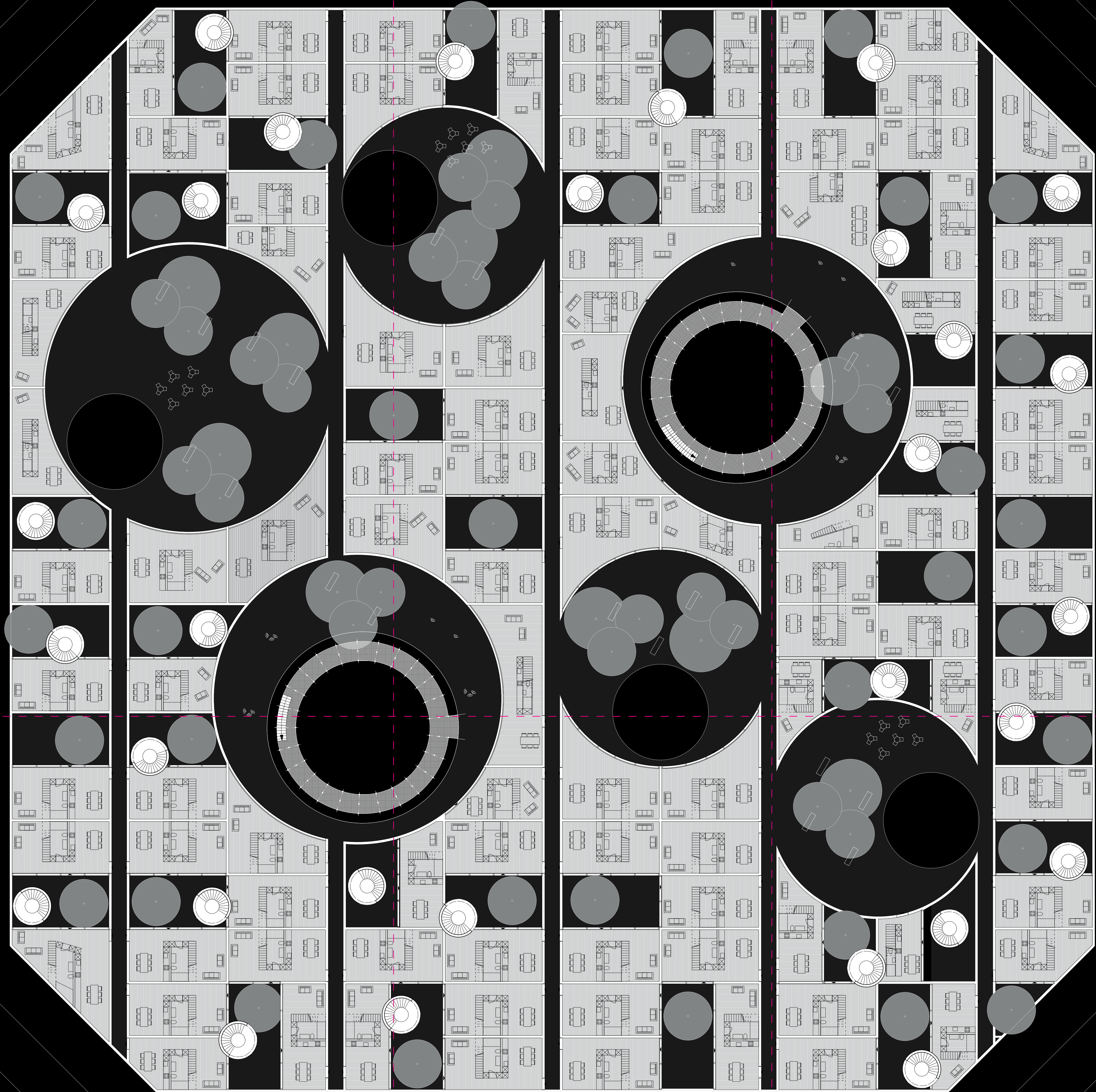


SECTION B 1:200

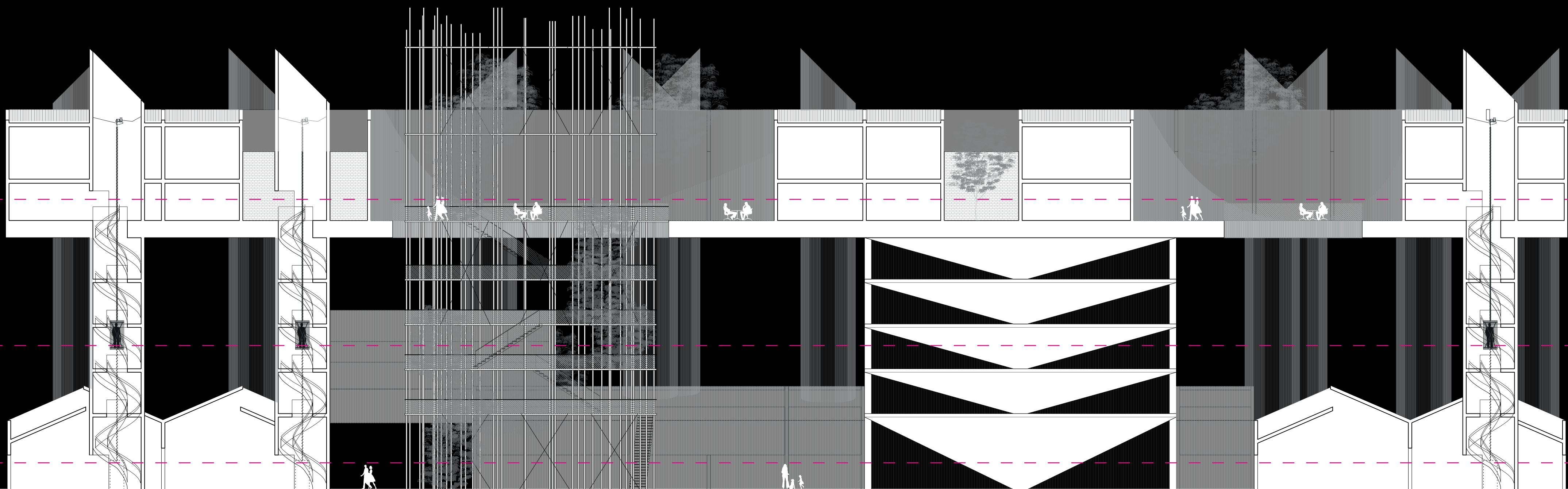


CITY BLOCK





FLOOR PLAN ABOVE 1:200



SECTION C 1:200



CITY BLOCK

QUARTERIDEE | JONAS MÜLLER | FS 2021 | ATELIER FISCHER | 28.05.2021



0 10 20 50

