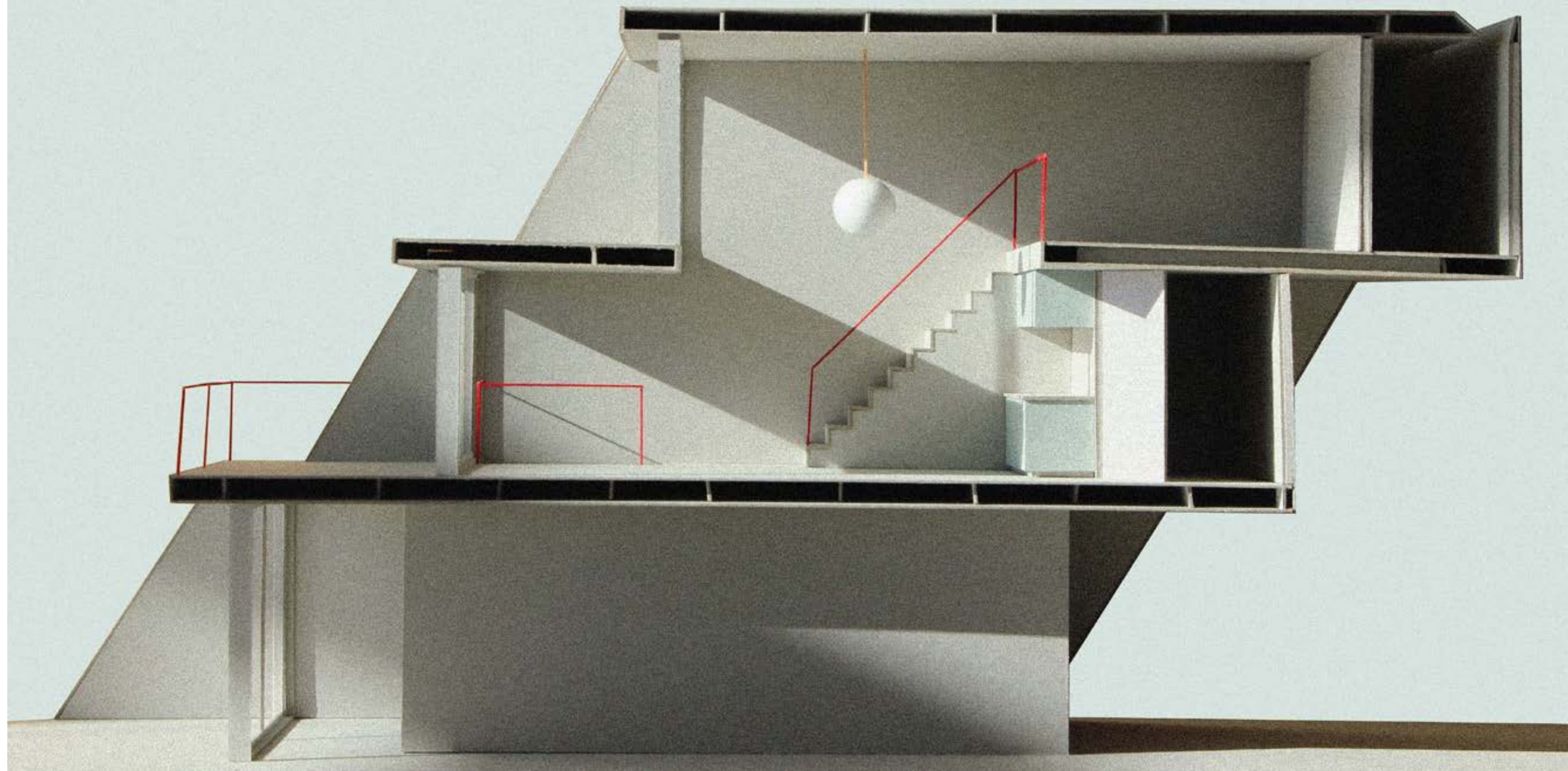
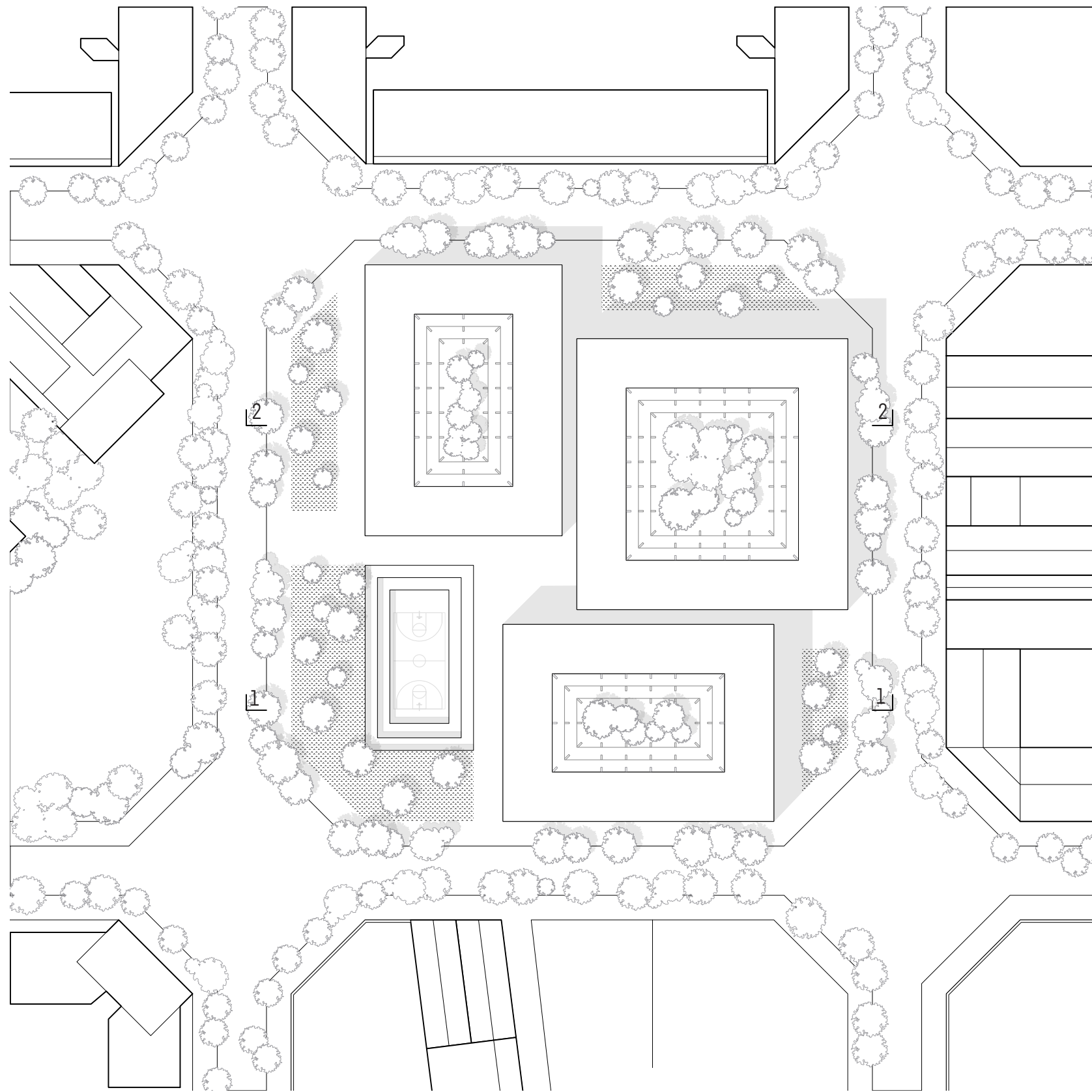
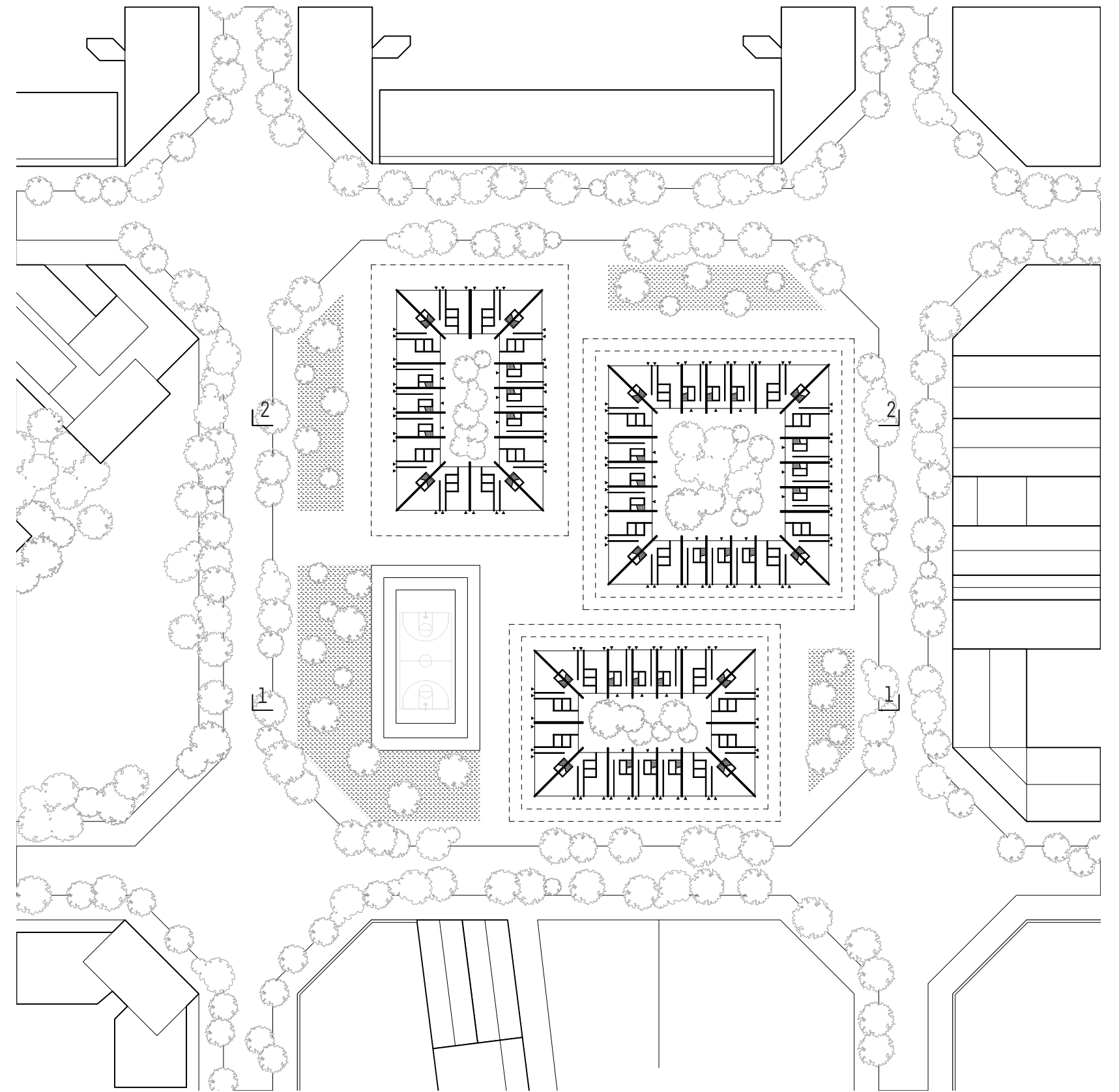


archipelago

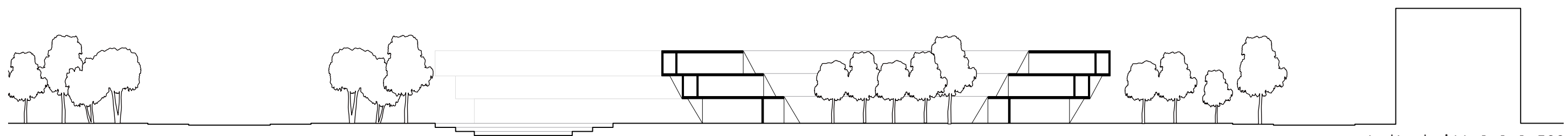




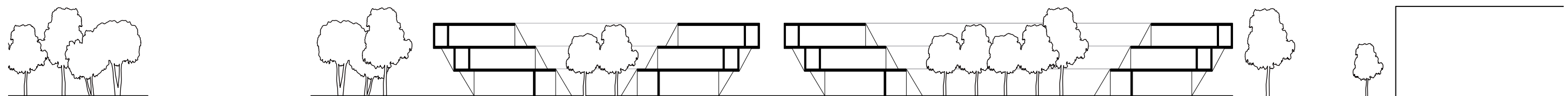
stadtaufsicht 1:1000



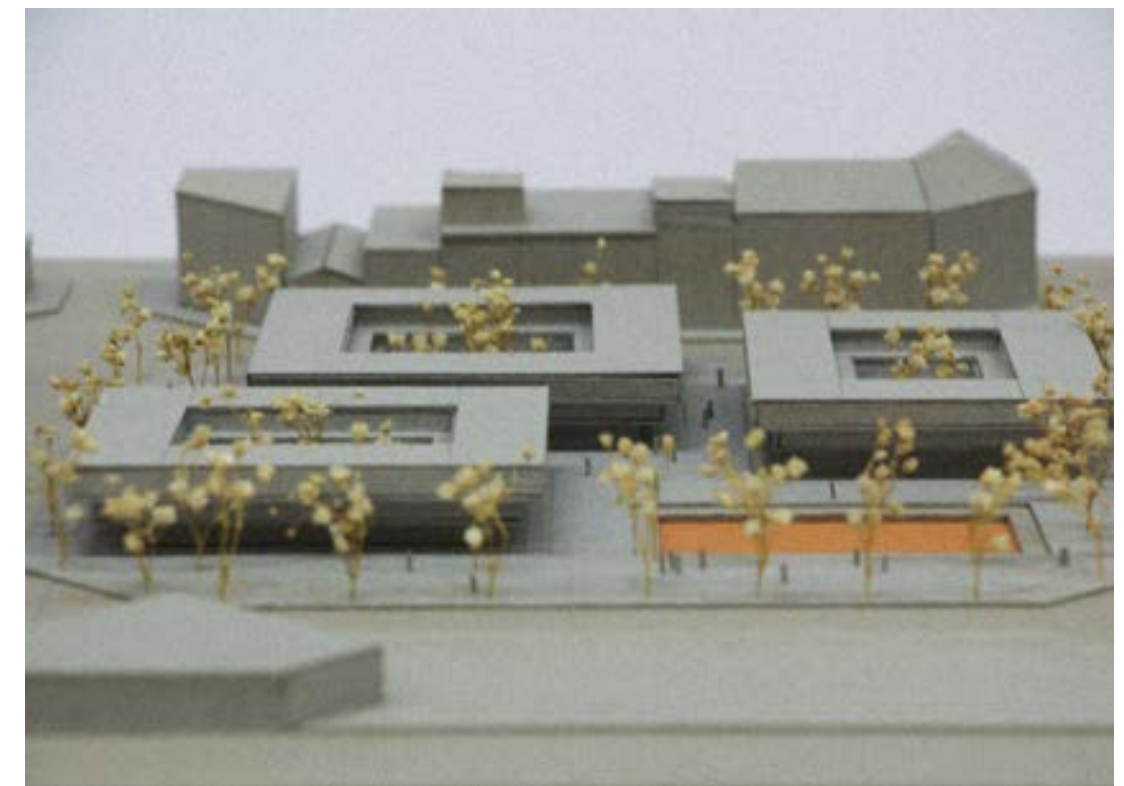
stadtgrundriss 1.06 1:1000



stadtschnitt 1-1 1:500



stadtschnitt 2-2 1:500



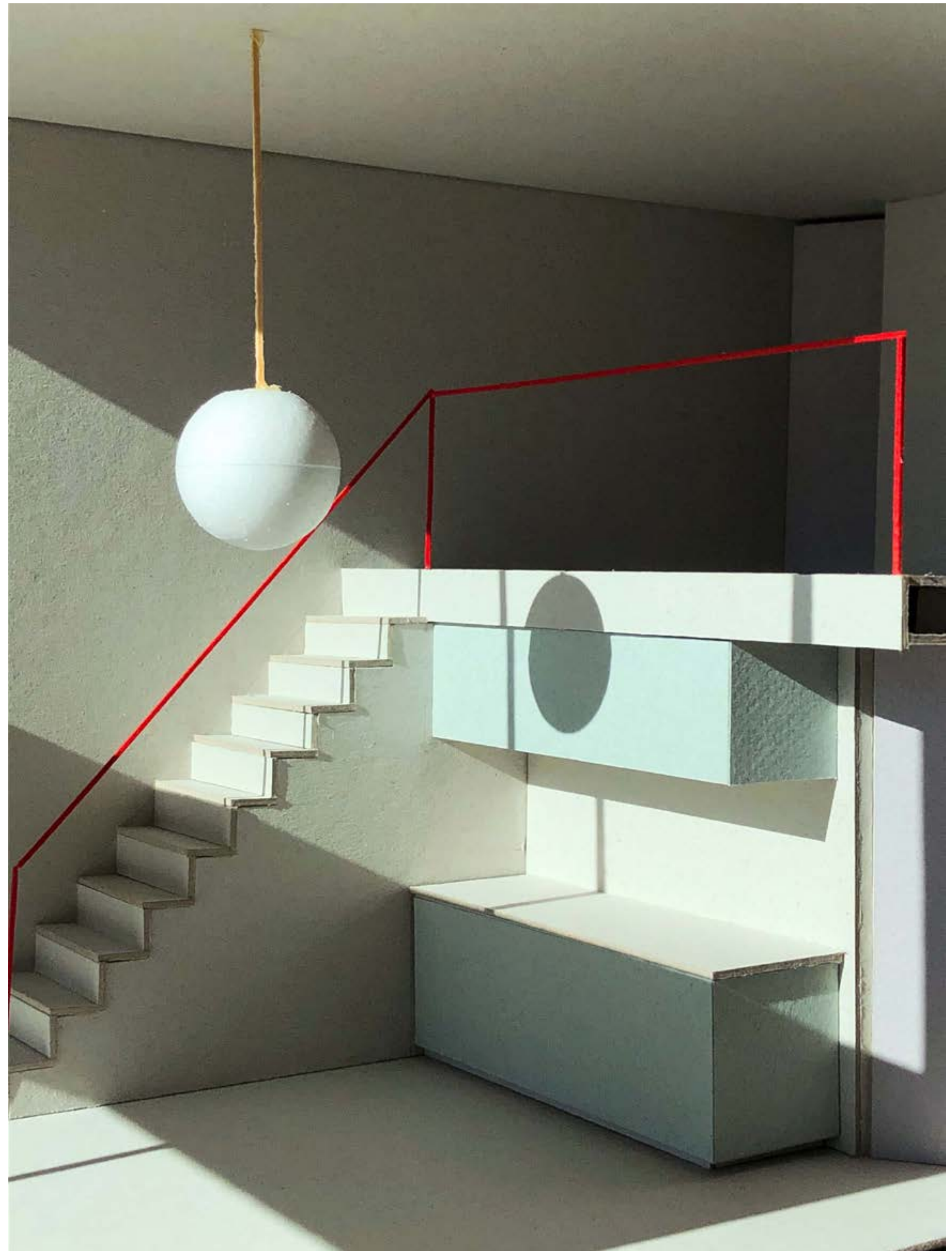
modell 1:500

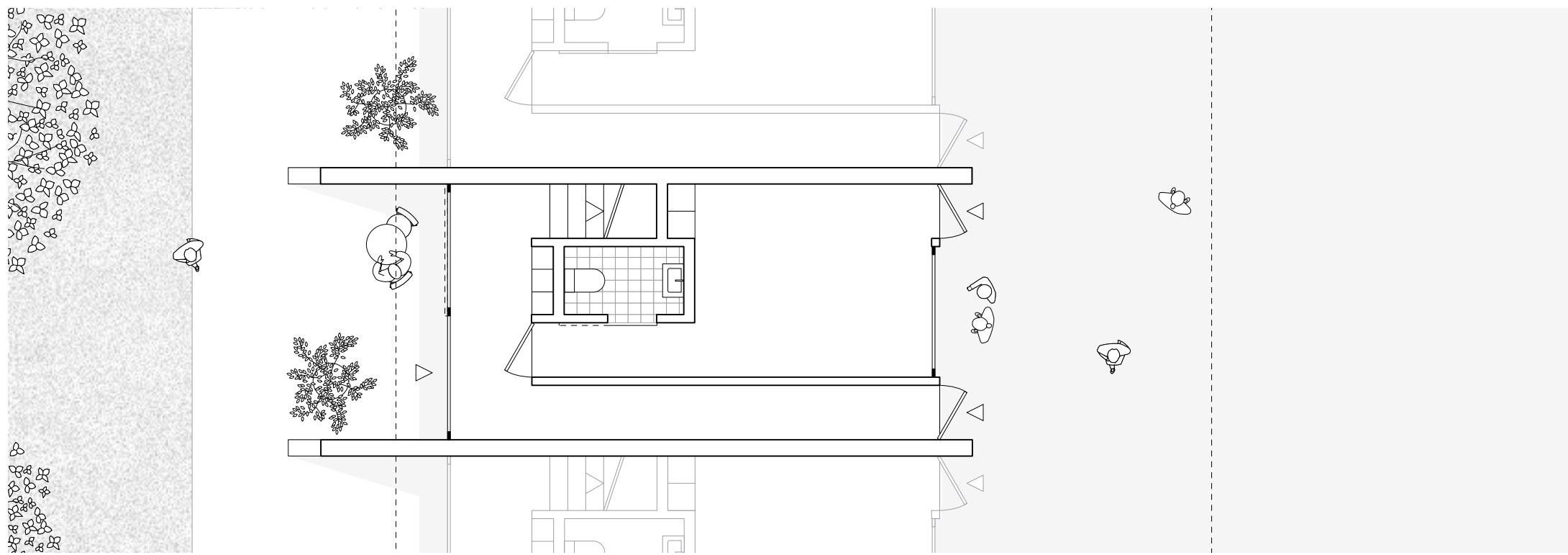
archipelago

The aim was to create a lively neighborhood, where passengers stroll through the alleys to look at ateliers and people meet up for a match of basketball, to watch a concert or just to hang out beneath trees. At the same time a contrasting form of life should be possible, much more private, where a deeper sense of community is able to grow.

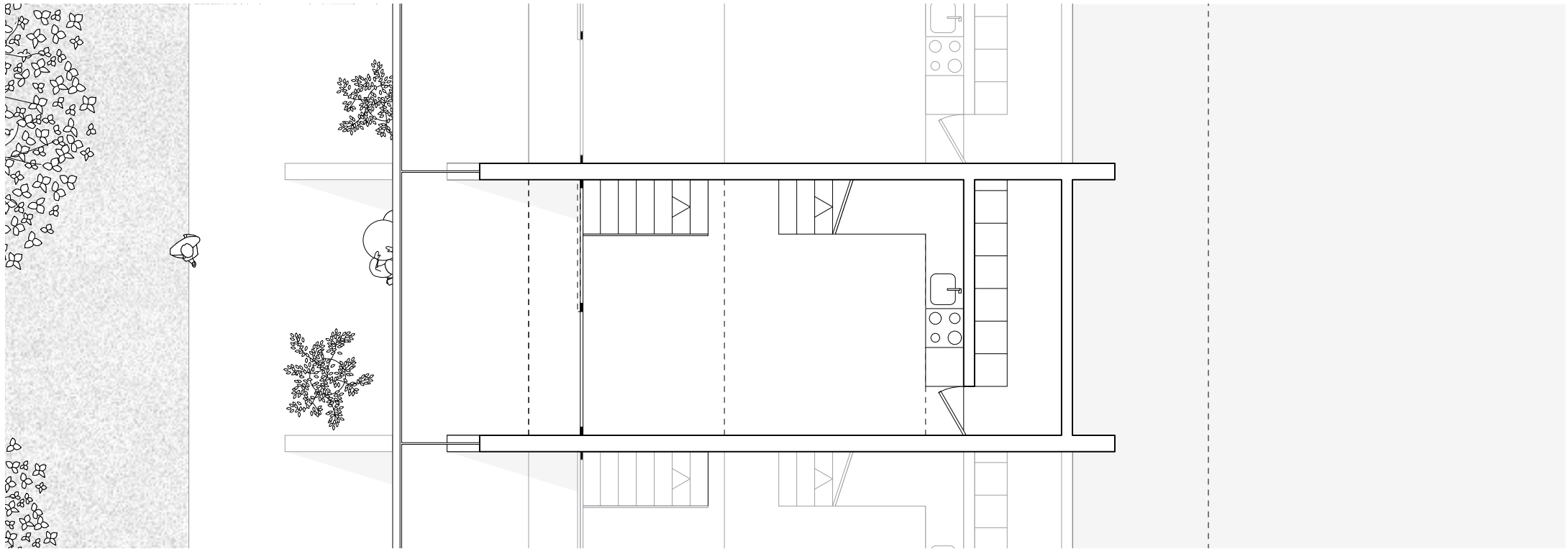
The neighborhood consists of three main structures. The area between them is public space. On these three street corners (marked), which are most alive, a plaza invites passers-by to enter the neighborhood. An existing plaza (marked) is included into a large public place with an arena (marked) for sport, concert or other gatherings.

The structures are built like rings, its upper floors pushed outwards in a regular manner to create shadow for the public alleyways and a terrace like inner life. The ground floor is focused on the outside, housing the atelier. The two upper floors are made for living and directed to the peaceful and introvert inside patio, serving as a calm recreational space for the inhabitants. Since the structures serve as islands of familiarity and intimacy, the project is called archipelago.

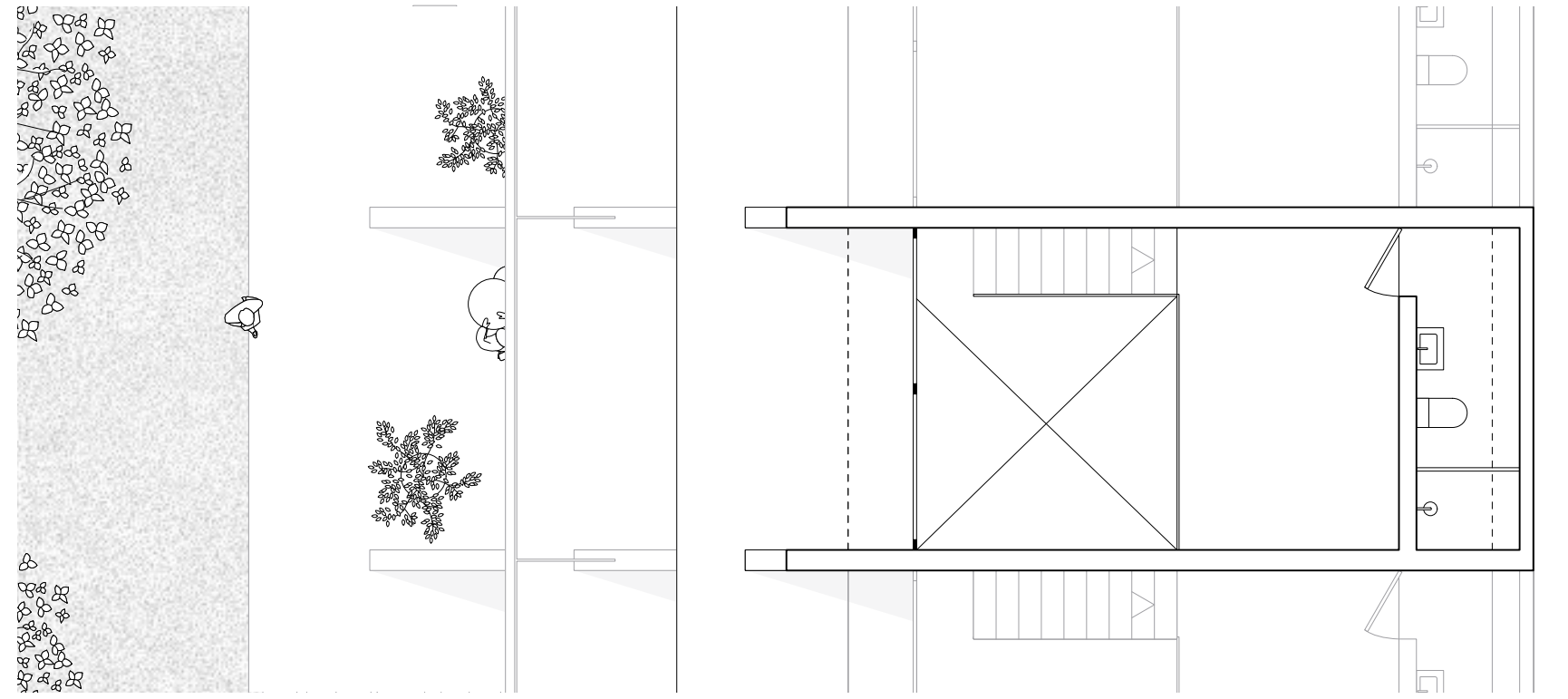




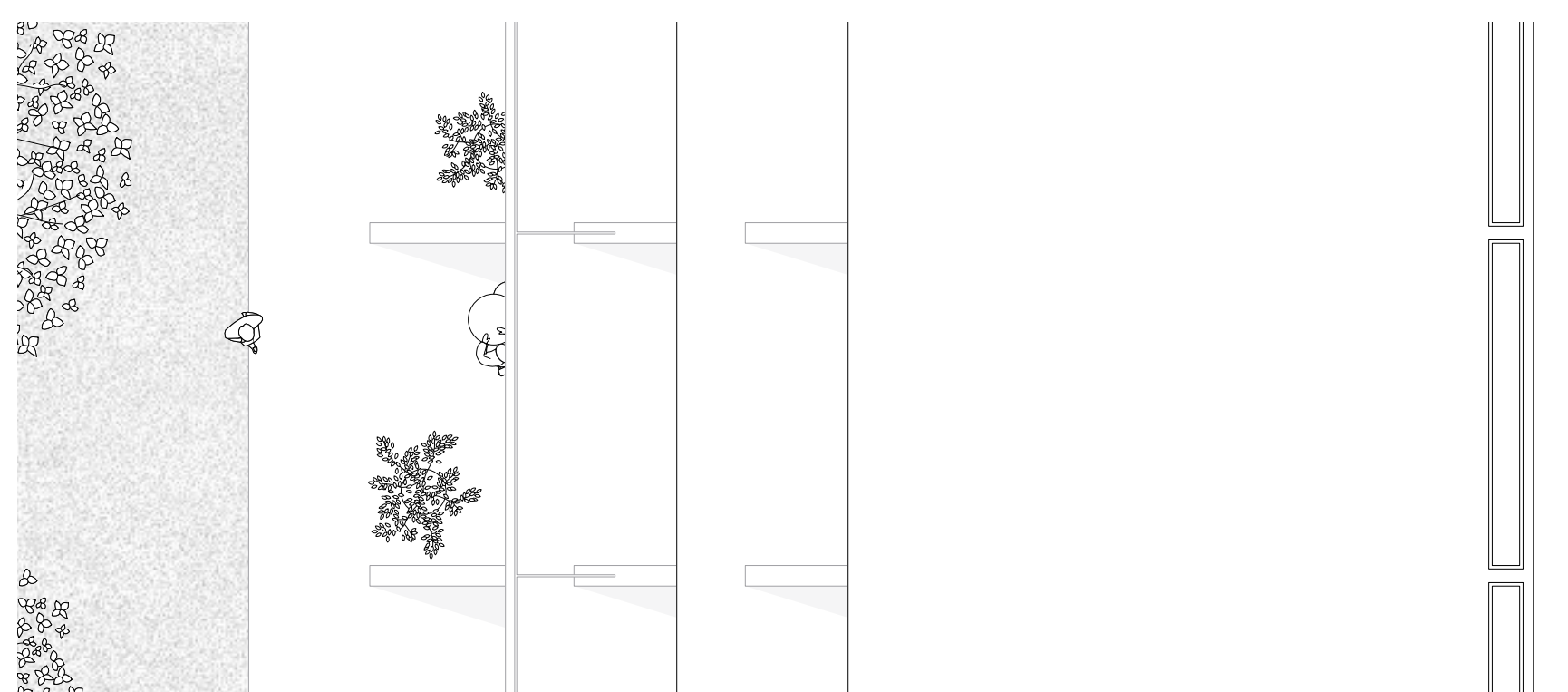
erdgeschoss



1.obergeschoss

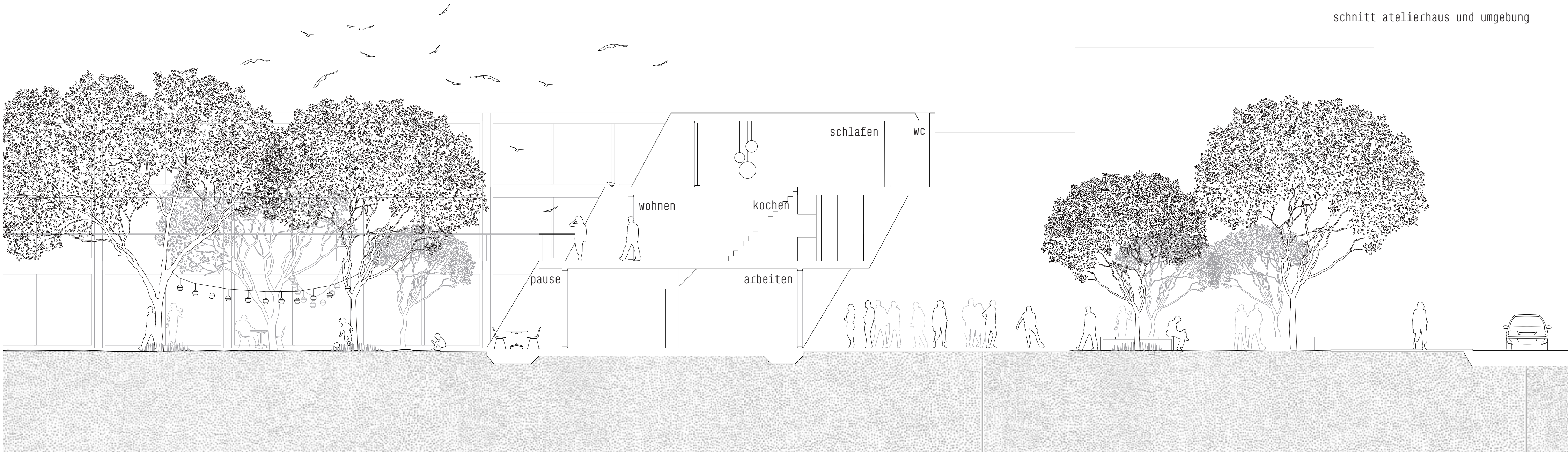


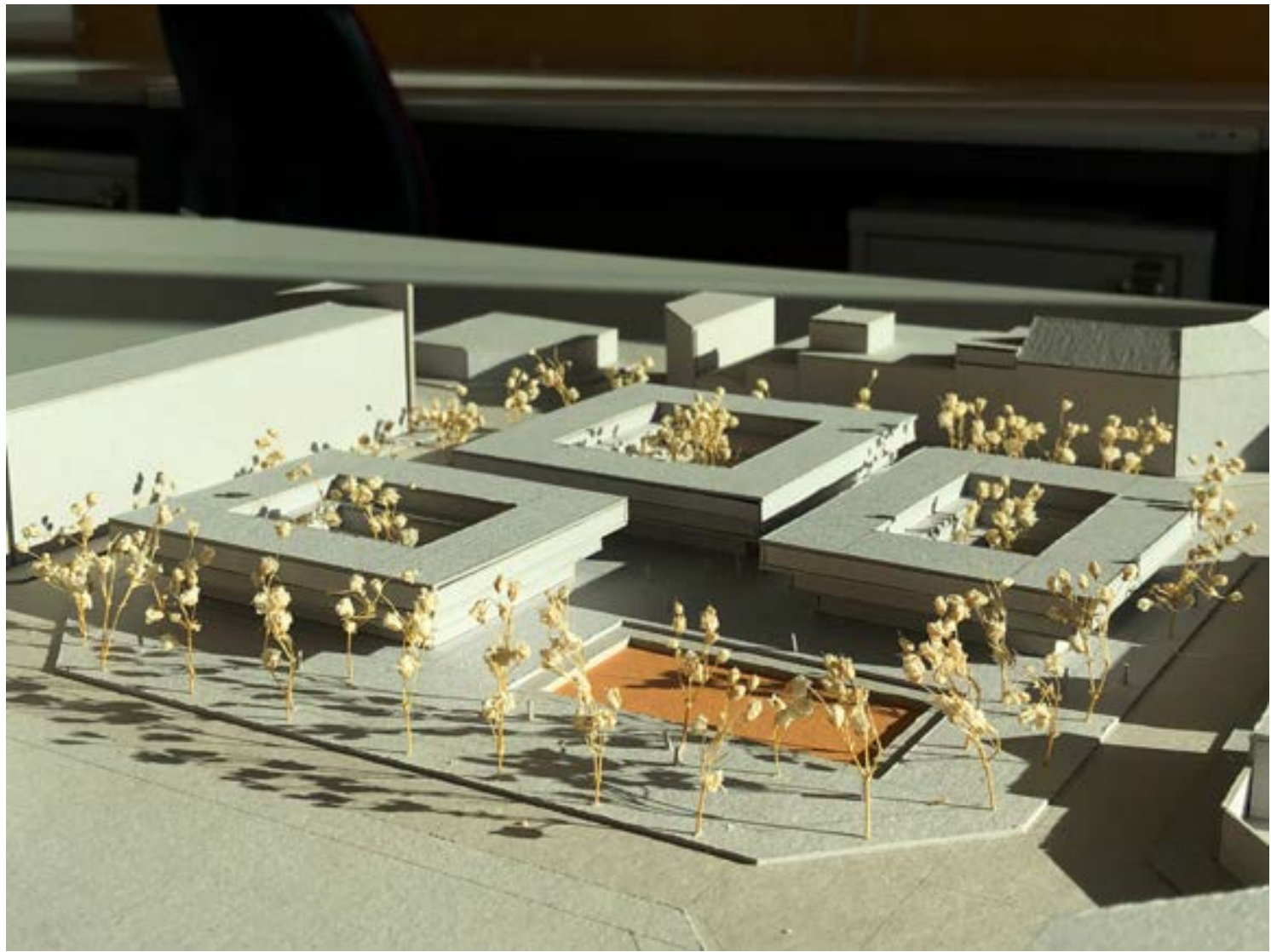
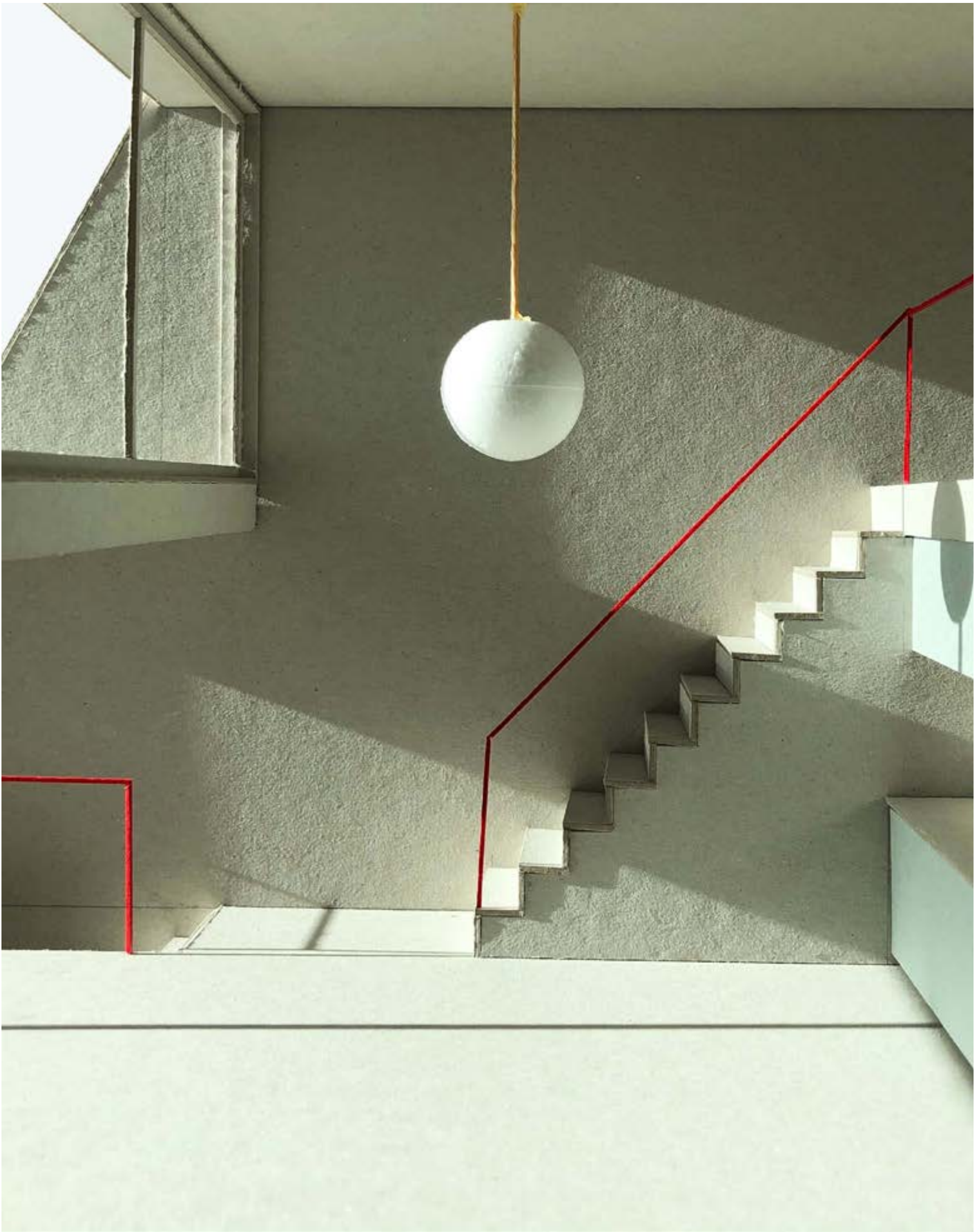
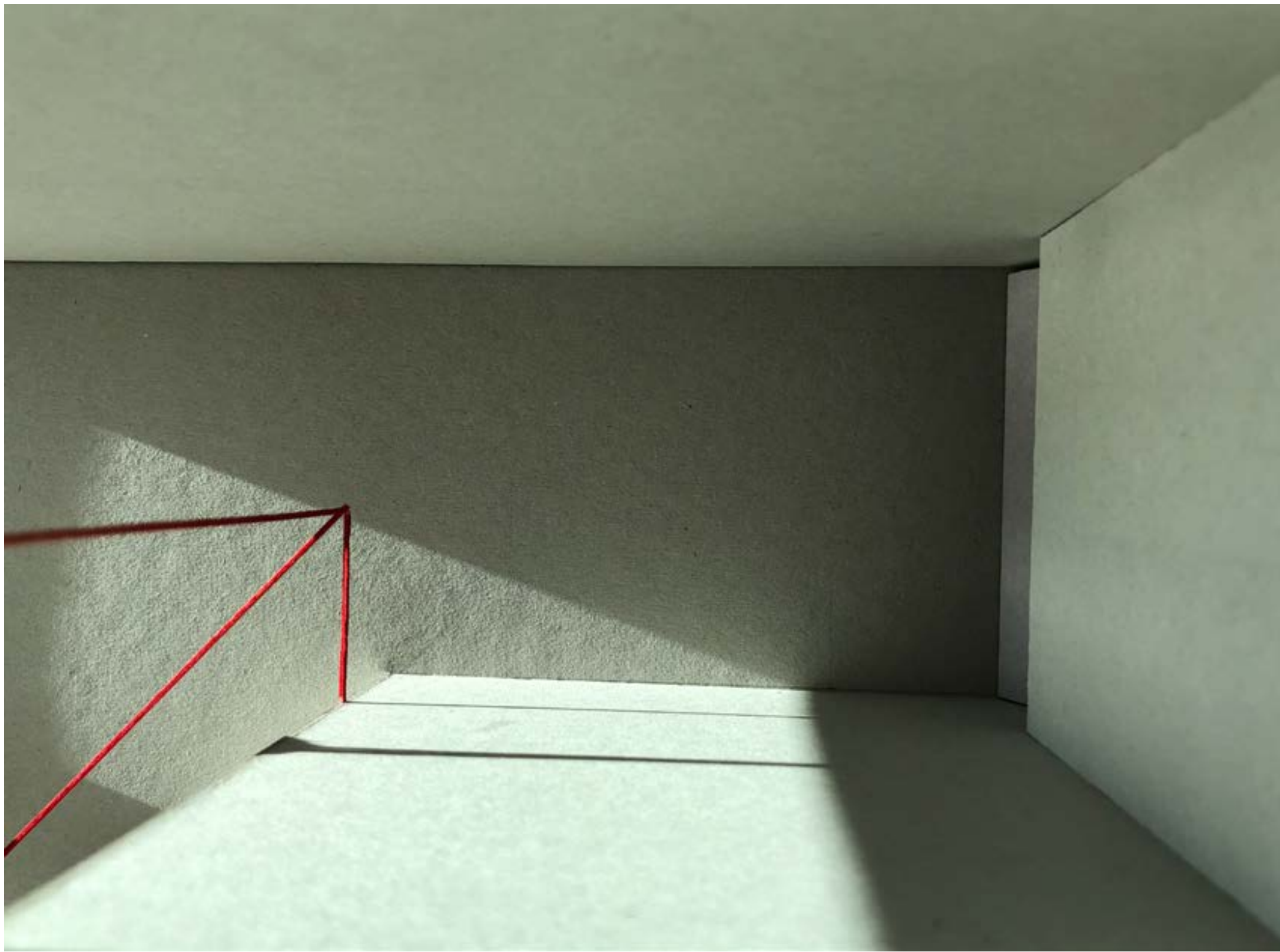
2.obergeschoss



dachaufsicht

schnitt atelierhaus und umgebung





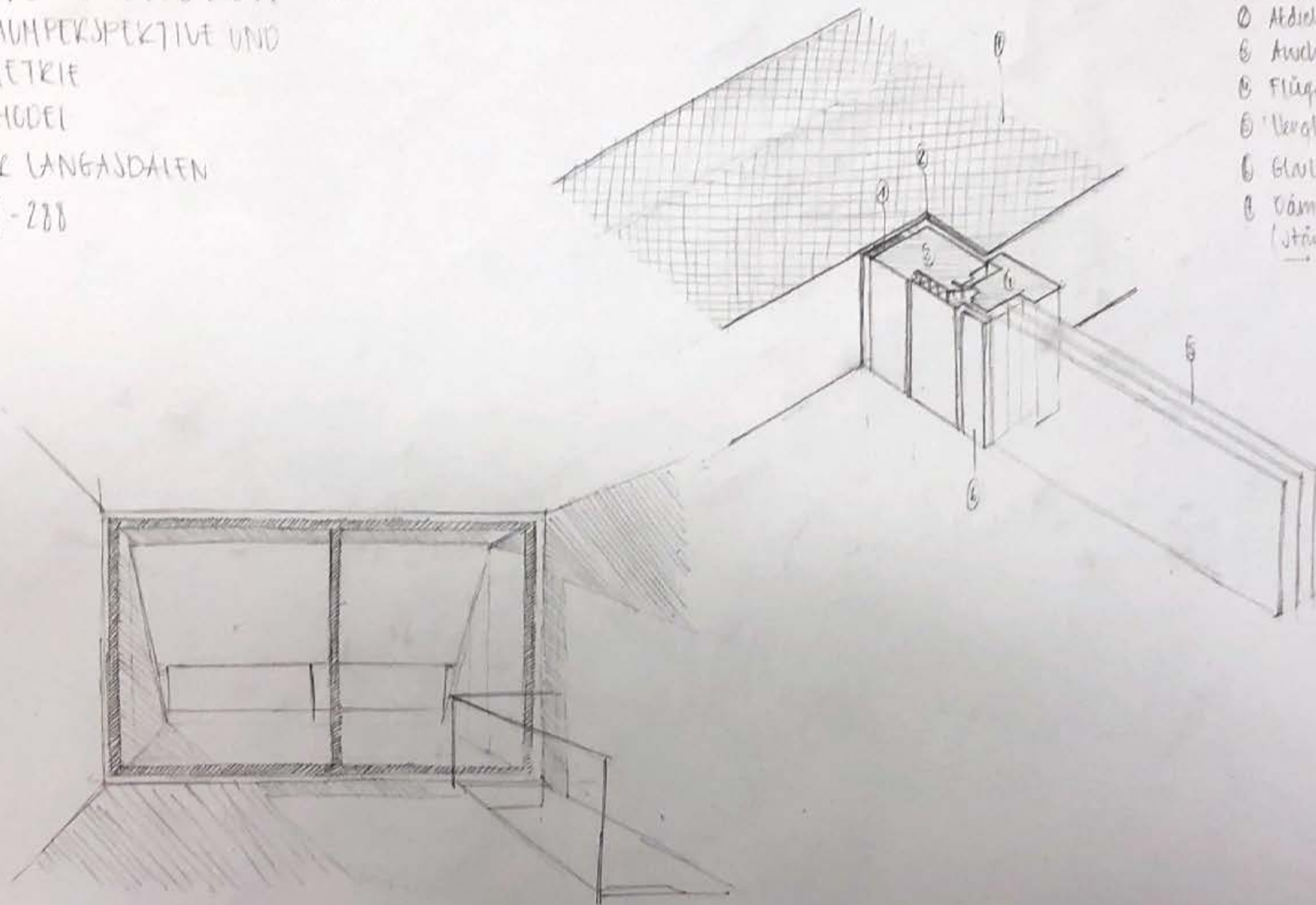
ÜBUNG FENSTER BUK

INNENRAUMPERSPEKTIVE UND
AXONOMETRIE

JULIAN HODEL

ATELIER LANGSDALEN

20-919-288



- ① Komprimband
- ② Abdichtungsbund
- ③ Anschlagrahmen
- ④ Flügelrahmen
- ⑤ Verglasung
- ⑥ Glaskante
- ⑦ Dämmleiste
(Stärke 35mm)
→ geographischer
Jücker