

AN URBAN NEIGHBOURHOOD IN POBLENOU

ETH Zürich, Professur Deplazes
Entwurf und Konstruktion II

Silvan Schmid
FS 21 Atelier Langåsdalen



URBAN NEIGHBOURHOOD 1:200

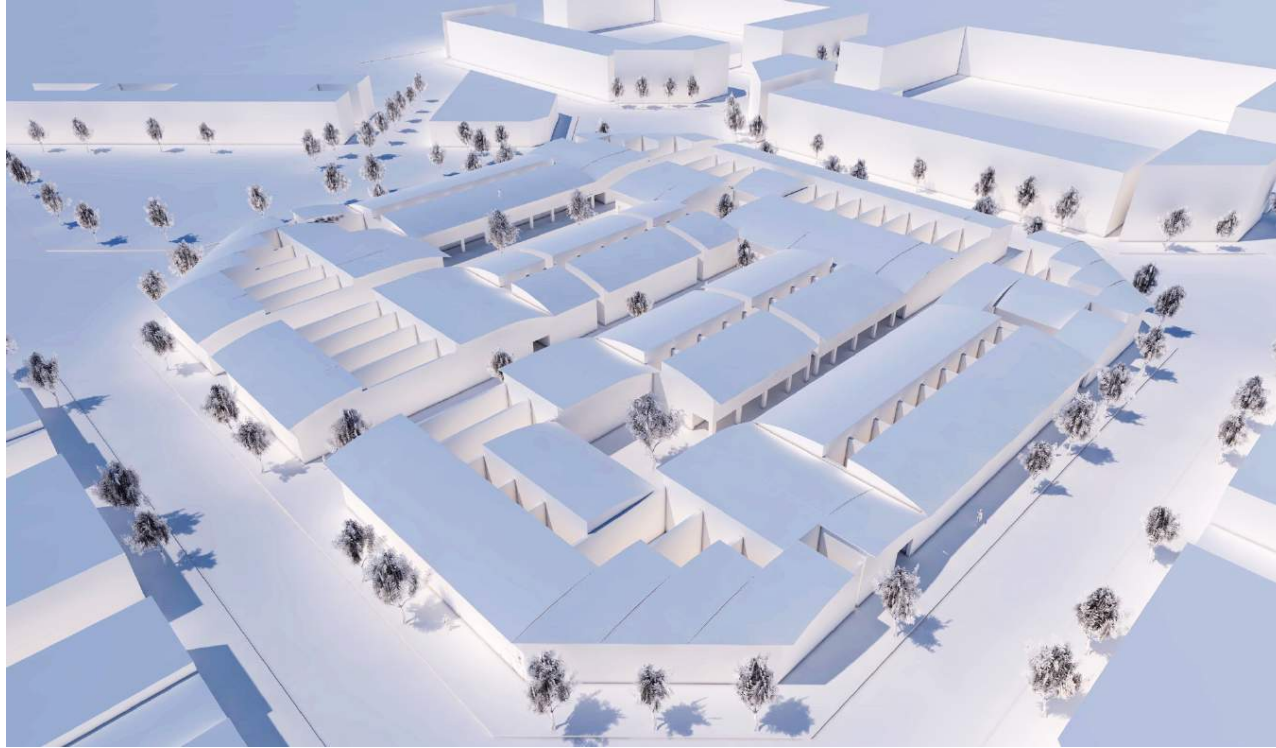


Figure 1: Perspective overview

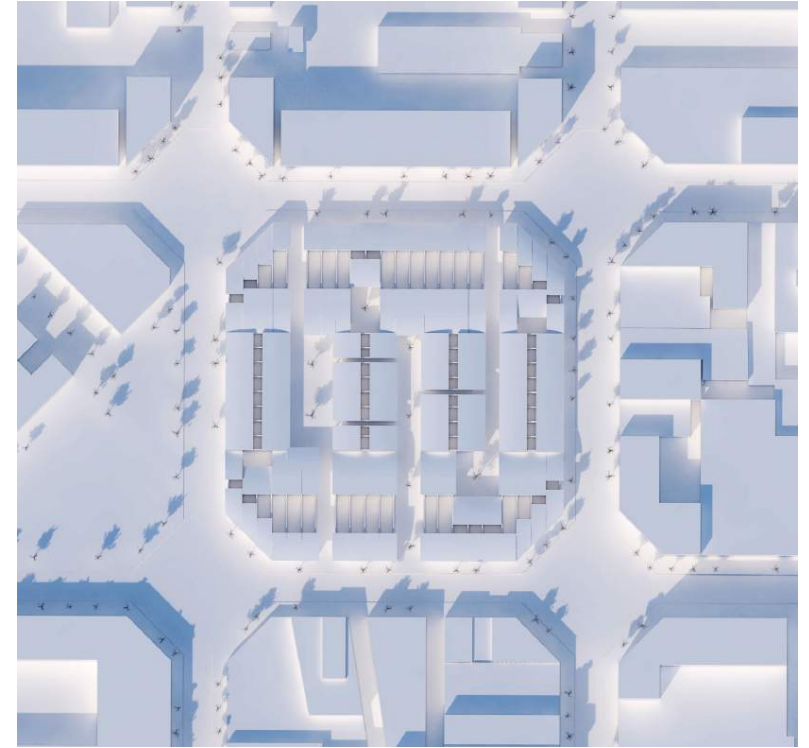


Figure 2: Top view

The urban block is characterized by a horizontal and vertical system of paths. Arcades serve to address the residential units and form covered access routes. By shifting the Atelierhaus, squares and courtyards with different qualities are created.



Figure 3: Root view

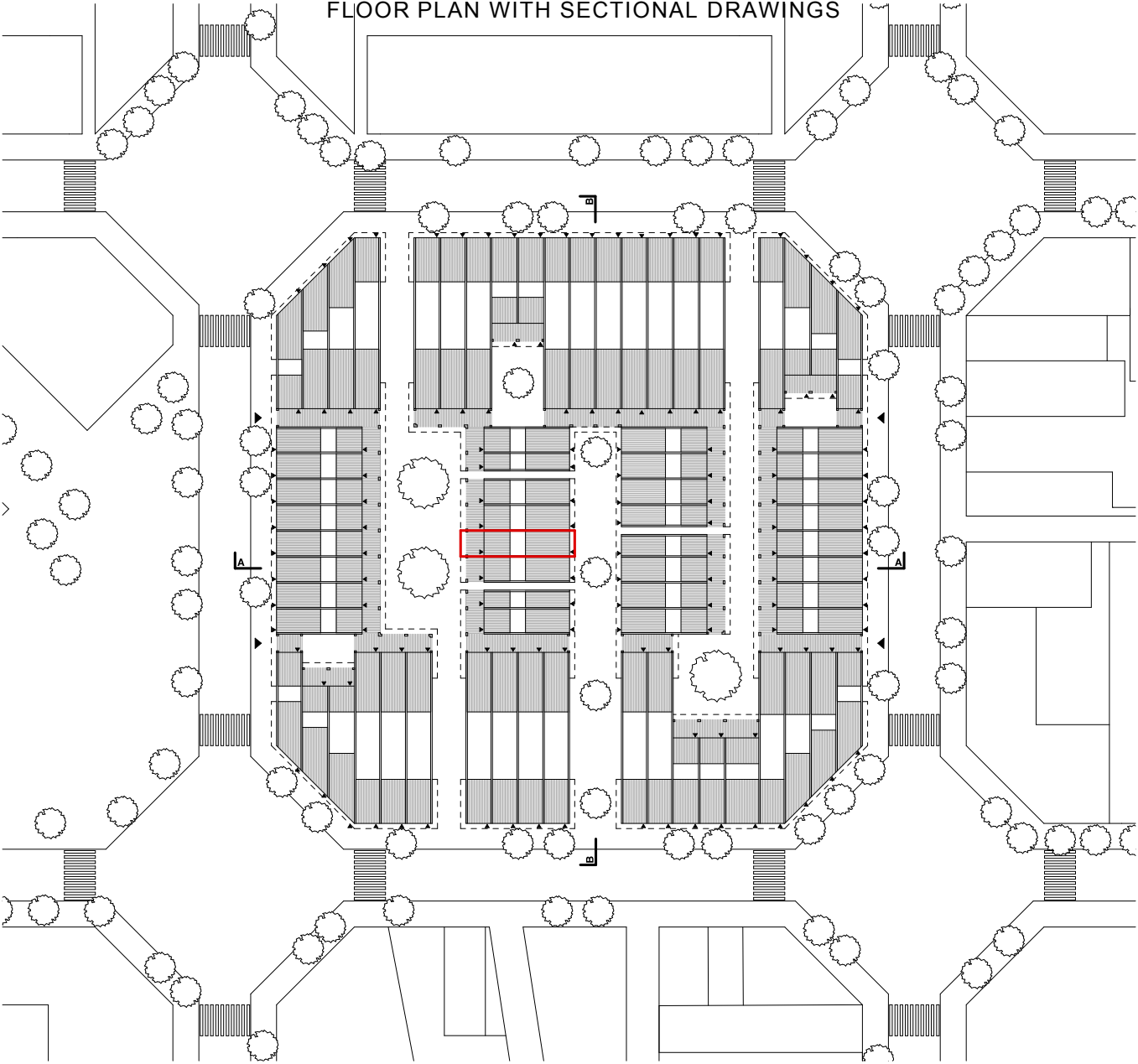


Figure 4: Square with Arcades



Figure 5: Horizontal path system

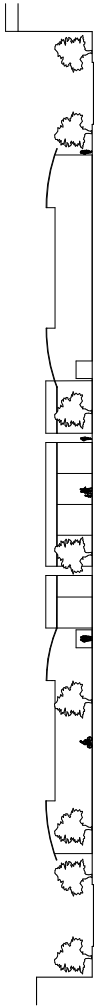
URBAN BLOCK 1:500
FLOOR PLAN WITH SECTIONAL DRAWINGS



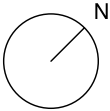
Stadtgeschossplan Mst. 1:500



Stadschnitt A-A Mst. 1:500



Stadschnitt B-B Mst. 1:500



1 : 5 0 0



Figure 6: Sketch about materiality and sense of space

INSIDE | OUTSIDE FRONT | BACK

The living and working area are separated by a courtyard. It is the center of the Atelierhaus and serves as a source of light and a retreat. While the working area opens to the public, on the side of the living area there is an arcade which takes over the addressing and is separated by a perforated brick wall.



Figure 7: Atelierhaus Side View 1:50



Figure 8: Atelierhaus Top View 1:50

LIVING



WORKING

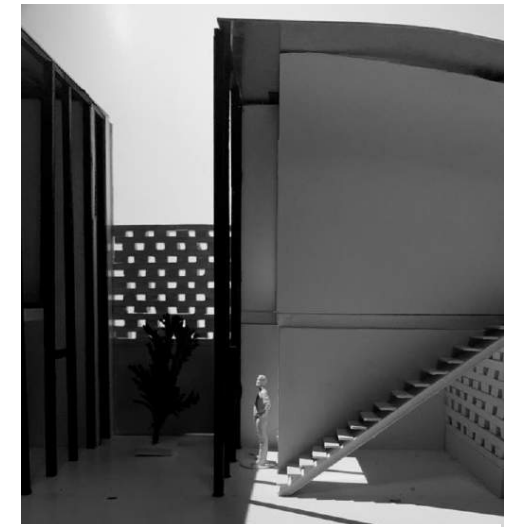
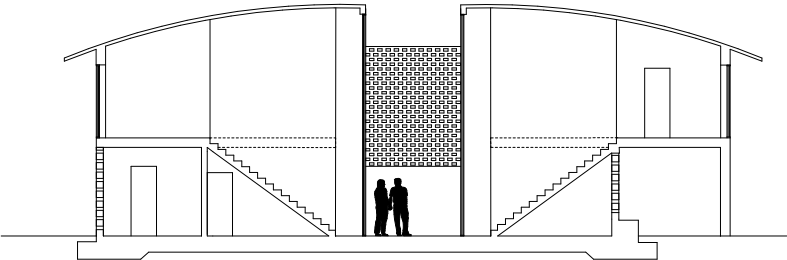


Figure 9: Light Rays

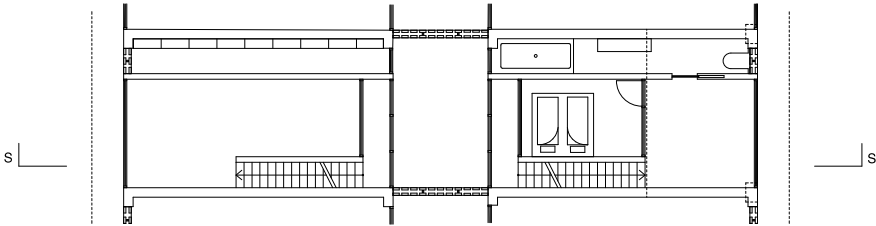


Figure 10: Enfilade

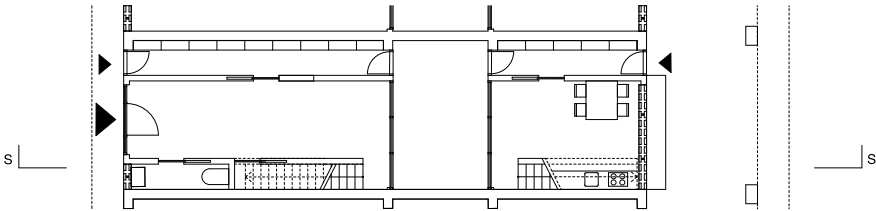
ATELIERHAUS 1:100
FLOOR PLAN WITH SECTIONAL DRAWINGS



Schnitt S-S Mst. 1:100



Obergeschoss Mst. 1:100



Erdgeschoss Mst. 1:100

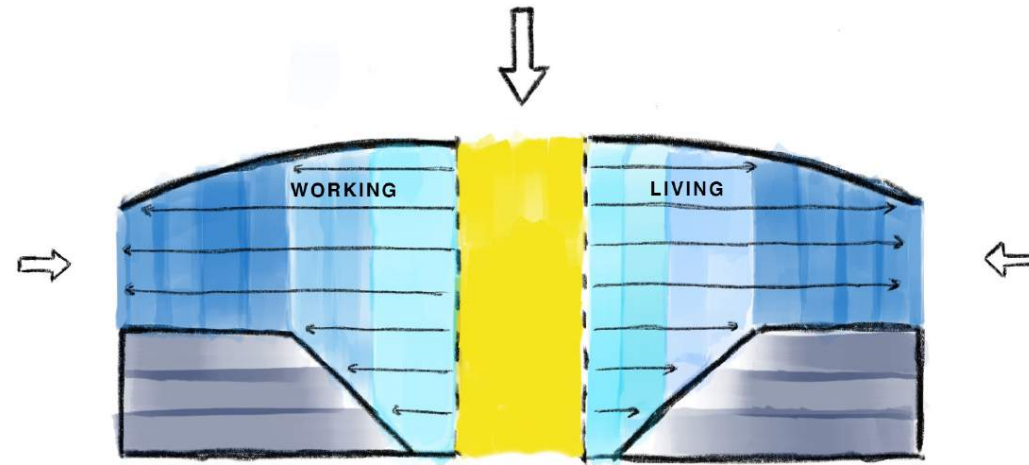
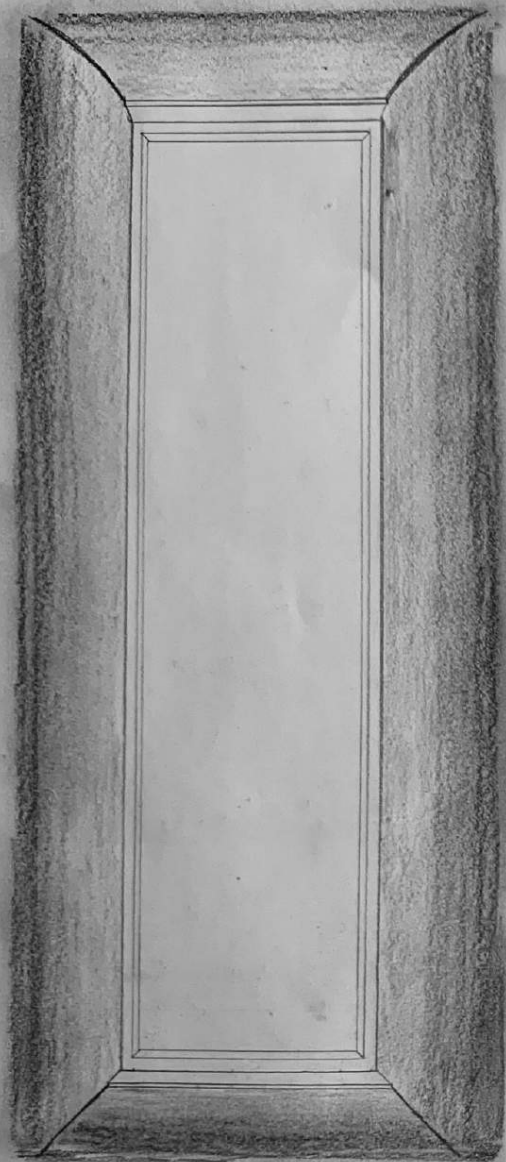


Figure 11: Concept Atelierhaus

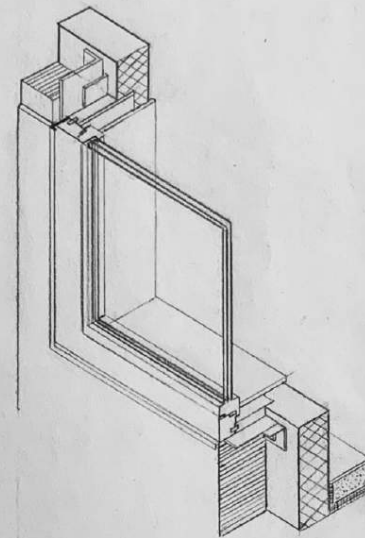
ANALYSIS - CURVED INDUSTRIAL ROOFS OF POBLENOU



Figure 12: Result of the analysis



1:20



1:10

Übung Fenster: Innenraum-Perspektive und Axonometrie 1:10

StudentIn: *Silvan Schmid*