

Home Insert Page Layout Formulas Data Review View

Cut Copy Paste Format

Futura 12 A A

B I U

Wrap Text Merge & Center

General

Normal Bad Good Neutral Calculation Check Cell

Conditional Formatting Format as Table

AutoSum Fill Clear Sort & Filter

D190

E F G H I J K L M N O P Q R S T U V W X Y Z AA AB AC AD AE AF AG AH AI AJ AK AL

1

2

3

4

5

6

7

8

9

10

11

12

13

14

15

16

17

18

19

20

21

22

23

24

25

26

27

28

29

30

31

32

33

34

35

36

37

38

39

40

41

42

43

44

45

46

47

48

49

50

51

52

53

54

55

56

57

58

59

60

61

62

63

64

65

66

67

Brunaupark and the story of interests



Hannes Pabst	Pascal Mijnssen	Gabriel Eggenschwyler
UNIVERSUM	CAROUSSEL	JOURNEY
5,33%	33,3%	333%
	PS21	

Excel File Edit View Insert Format Tools Data Window Help

2021_FS_M3_Group 6_Pascal_Mijnssen_Gabriel_Eggenschwyler_Hannes_Pabst_Presentation_210601

Home Insert Page Layout Formulas Data Review View

Clipboard: Cut, Copy, Paste, Format

Font: Futura, 12, Bold, Italic, Underline, Color, Background Color

Paragraph: Wrap Text, Merge & Center

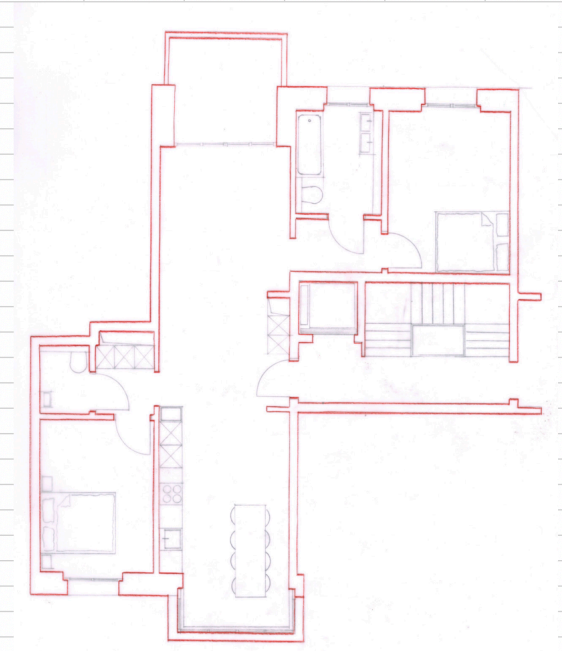
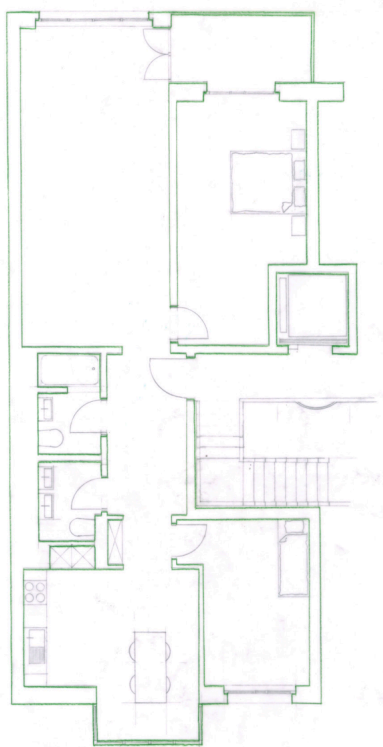
Number: General, Currency, Percentage, Decimals

Styles: Normal, Bad, Good, Neutral, Calculation, Check Cell

Tools: Insert, Delete, Format, AutoSum, Fill, Clear, Sort & Filter

BM31

AT AU AV AW AX AY AZ BA BB BC BD BE BF BG BH BI BJ BK BL BM BN BO



	Wohnen 3	Ersatzneubau
Room 1	12,7	12,5
Transition 1		3,6
Room 2	20,0	14,0
Transition 2		3,6
Bathroom 1	4,4	2,5
Bathroom 2	4,2	6,0
Balcony	6,3	9,0
Entrance	11,0	
Kitchen	18,0	
Living Room	32,0	45,0
Total	108,0 m2	96,0 m2

Home Insert Page Layout Formulas Data Review View

Font: Futura, Size: 11, Bold, Italic, Underline, Color: A
Paragraph: Wrap Text, Merge & Center
Number: General, Currency, Percentage, Decimals: .00
Conditional Formatting, Format as Table
Styles: Normal, Bad, Good, Neutral, Calculation, Check Cell
Cells: Insert, Delete, Format
AutoSum, Fill, Clear, Sort & Filter

G137 What does 33% mean at a place, where Pensions Funds have to pay a negative rate of interest if they do not allocate their administrated funds? A place, where they are Obligated to allocate 16,7% of the pensions funds into real estate?

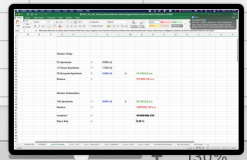
	D	E	F	G	H	I	J	K	L	M	N	O	P	Q	R	S	T	U	V
4																			
5																			
6																			
7																			
8																			
9																			
10																			
11																			
12																			
13																			
14																			
15																			
16																			
17																			
18																			
19																			
20																			
21																			
22																			
23																			
24																			
25																			
26																			
27																			
28																			
29																			
30																			
31																			
32																			
33																			
34																			
35																			
36																			
37																			
38																			
39																			
40																			
41																			

Situation Today:

92 Apartments	=	8'000 m2		
14 Vacant Apartments	=	1'760 m2		
78 Occupied Apartments	=	6'240 m2	à	13 CHF/m2 p.m
Revenue	=			975'000 CHF p.a.

Situation Ersatzneubau:

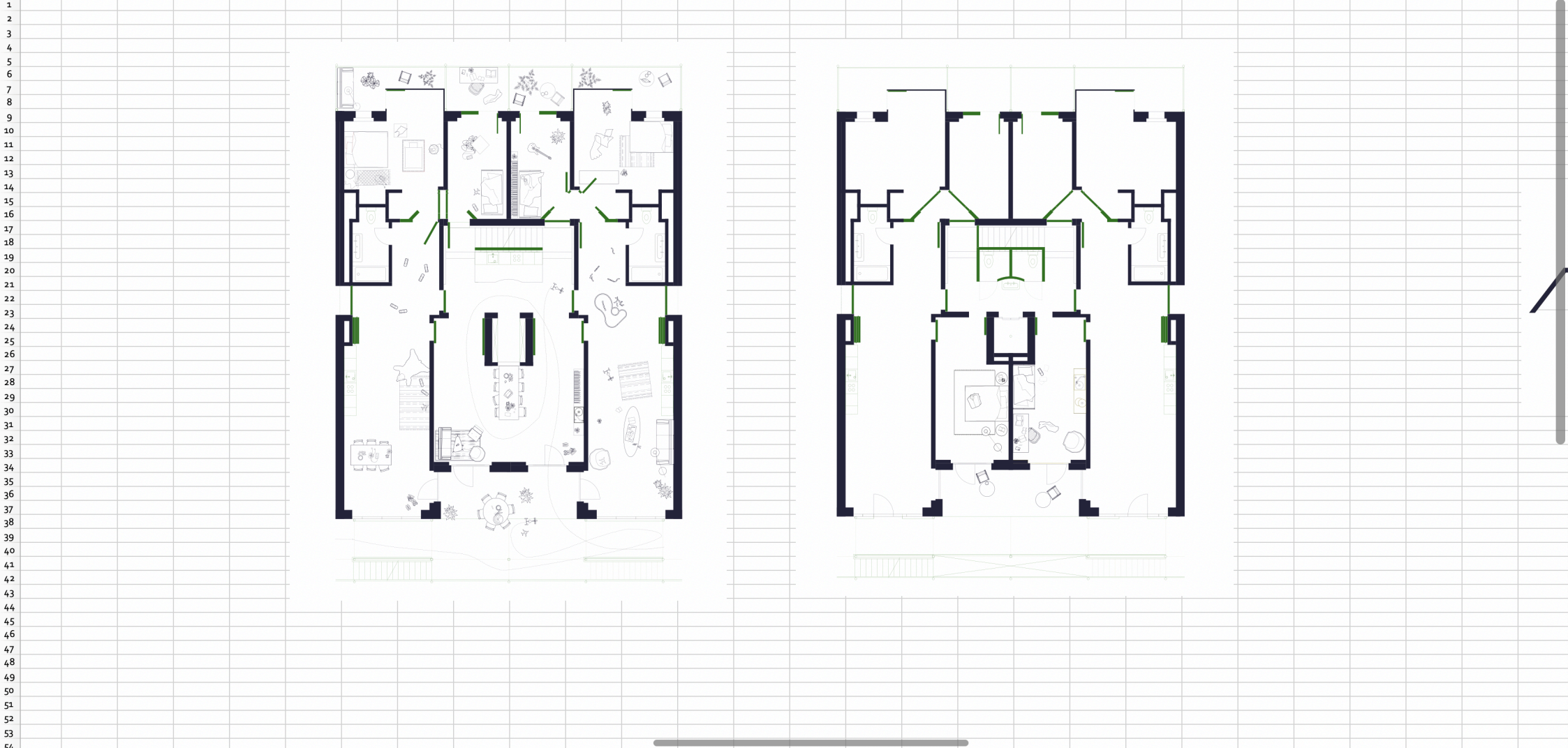
102 Apartments	=	8'009 m2	à	30 CHF/m2 p.m
Revenue	=			2'800'000 CHF p.a.
Investment	=			44'000'000 CHF
Return Rate	=			6,36 %



Home Insert Page Layout Formulas Data Review View

Futura 12 A A
 B I U
 Wrap Text Merge & Center
 General
 Conditional Formatting Format as Table
 Normal Bad Good
 Neutral Calculation Check Cell
 AutoSum Fill Clear Sort & Filter

BN57 BC BD BE BF BG BH BI BJ BK BL BM BN BO BP BQ BR BS BT BU BV BW BX BY BZ CA CB CC CD



Home Insert Page Layout Formulas Data Review View

Corbel (Body) 12 A A

Wrap Text Merge & Center

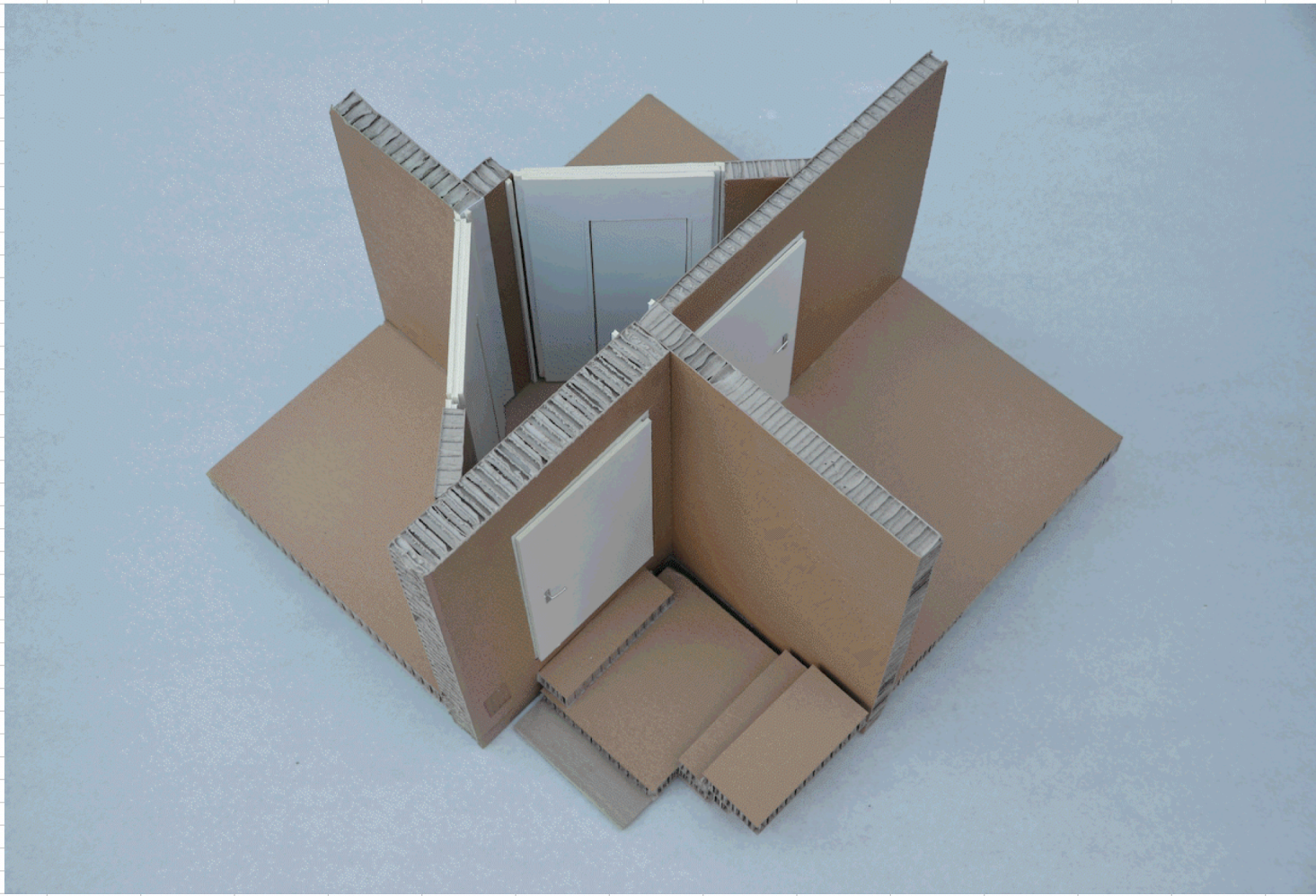
General

Normal Bad Good Neutral Calculation Check Cell

AutoSum Fill Clear Sort & Filter

S28

A B C D E F G H I J K L M N O P Q R S T U



Home Insert Page Layout Formulas Data Review View

Font: Futura, 12, Bold, Italic, Underline, Color, Background Color

Paragraph: Wrap Text, Merge & Center

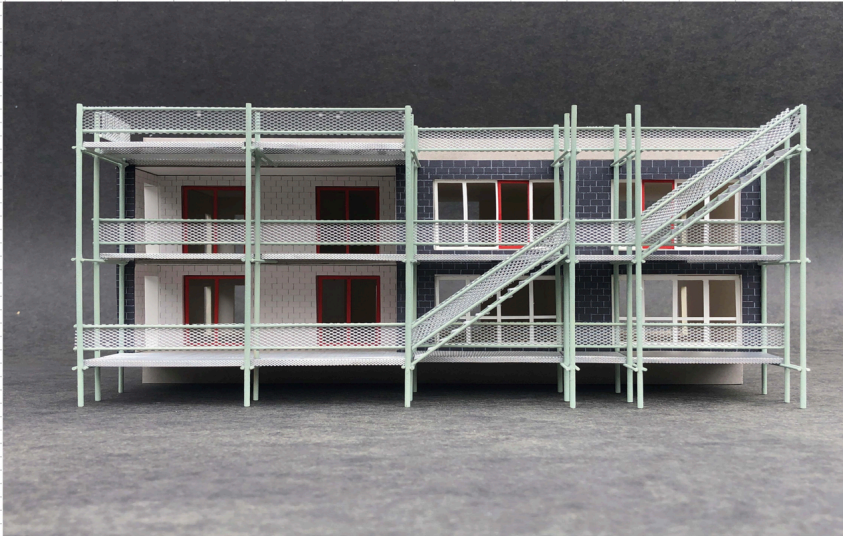
Number: General, Currency, Percentage, Decimals

Styles: Normal, Bad, Good, Neutral, Calculation, Check Cell

Operations: Insert, Delete, Format, AutoSum, Fill, Clear, Sort & Filter

BW20

BZ CA CB CC CD CE CF CG CH CI CJ CK CL CM CN CO CP CQ CR CS CT CU CV CW CX CY CZ DA DB DC DD DE DF DG DH DI DJ DK DL DM



Home Insert Page Layout Formulas Data Review View

Paste Cut Copy Format

Corbel (Body) 12 A A

Wrap Text

General

Normal Bad Good Neutral Calculation Check Cell

Insert Delete Format

AutoSum Fill Clear Sort & Filter

BD46

	A	B	C	D	E	F	G	H	I	J	K	L	M	N	O	P	Q	R	S
1																			
2																			
3																			
4																			
5																			
6																			
7																			
8																			
9																			
10																			
11																			
12																			
13																			
14																			
15																			
16																			
17																			
18																			
19																			
20																			
21																			
22																			
23																			
24																			
25																			
26																			
27																			
28																			
29																			
30																			
31																			
32																			
33																			
34																			
35																			
36																			
37																			
38																			

Corinne: Die Fenster sind würclich luut, ich tuen Oropax ine. S Fenster chammer nöd kippe über Nacht.
Am Morge ghört mer wens d Ziifig vo de Tamedia verteiled.

Olga: bi mir im Zimmer ischs mega luut denn am morge

Corinne: Das Gebäude isch Gsicht vom Brunaupark - s'laufed au alli Lüüt da ine und sueched d Migros

Home Insert Page Layout Formulas Data Review View

Cut Copy Paste Format

Futura 12 A A

Wrap Text Merge & Center

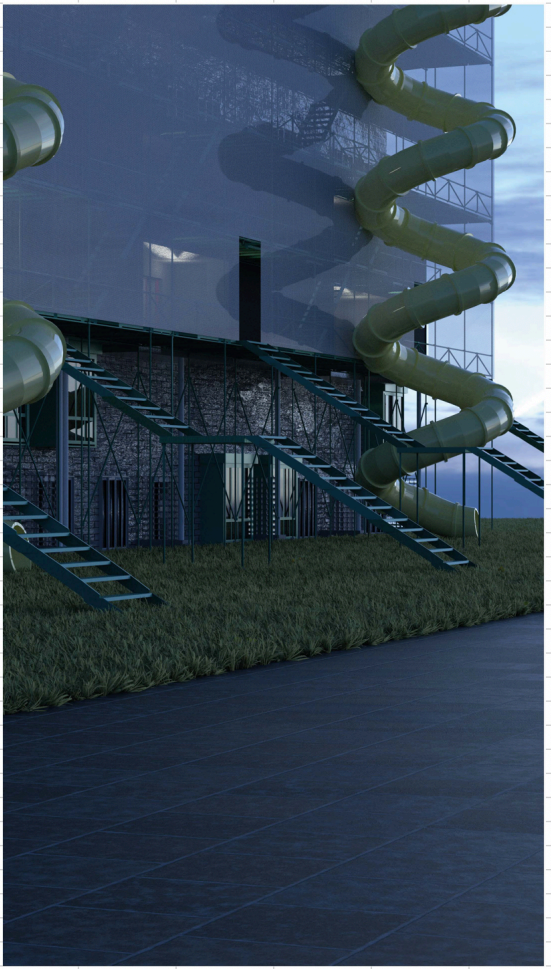
General

Normal Bad Good Neutral Calculation Check Cell

Insert Delete Format

AutoSum Fill Clear Sort & Filter

BA10 W X Y Z AA AB AC AD AE AF AG AH AI AJ AK AL AM AN AO AP AQ AR



Home Insert Page Layout Formulas Data Review View

Corbel (Body) 12 A A

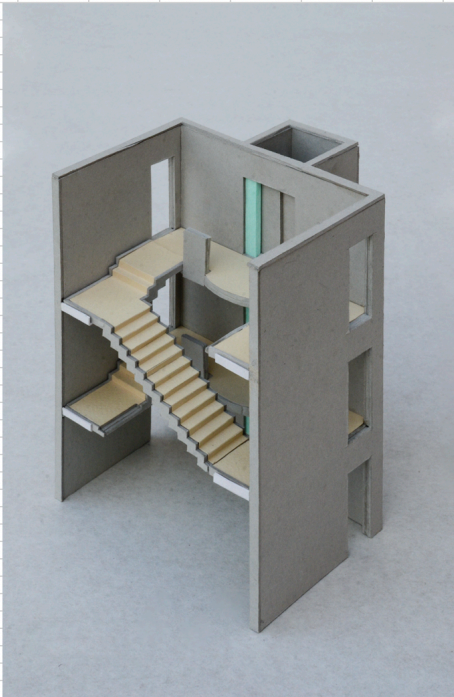
Wrap Text Merge & Center

General

Normal Bad Good Neutral Calculation Check Cell

AutoSum Fill Clear Sort & Filter

DF10 Y Z AA AB AC AD AE AF AG AH AI AJ AK AL AM AN AO AP AQ AR AS AT AU AV AW AX AY AZ BA BB BC



Home Insert Page Layout Formulas Data Review View

Corbel (Body) 12 A A

Wrap Text Merge & Center

General

Normal Bad Good Neutral Calculation Check Cell

AutoSum Fill Clear Sort & Filter

J101 AN AO AP AQ AR AS AT AU AV AW AX AY AZ BA BB BC BD BE BF BG BH BI BJ BK BL BM BN



what about value? what about worth? and what about exchange?

what makes the cost of something?

what happens if we take something worthless? something unloved? something that remains when the show is over?

what if the light stays on, the curtains never fall? the play never finished? the derniere never happened and all that remains starts to play its own play once the audience leaves?

the isolation takes the role of marble, the broken remains of the demolished brunaupark acts, now protagonist after all, as a highly polished terrazzo, the osb plate dressed up in the varnish of sailboats, galvanized steel polished as if it was silver cutlery and construction tarpaulin enacting a silk curtain, performing as the curtain

on the only thing they needed was the chance of spotlight and a curtain that never falls