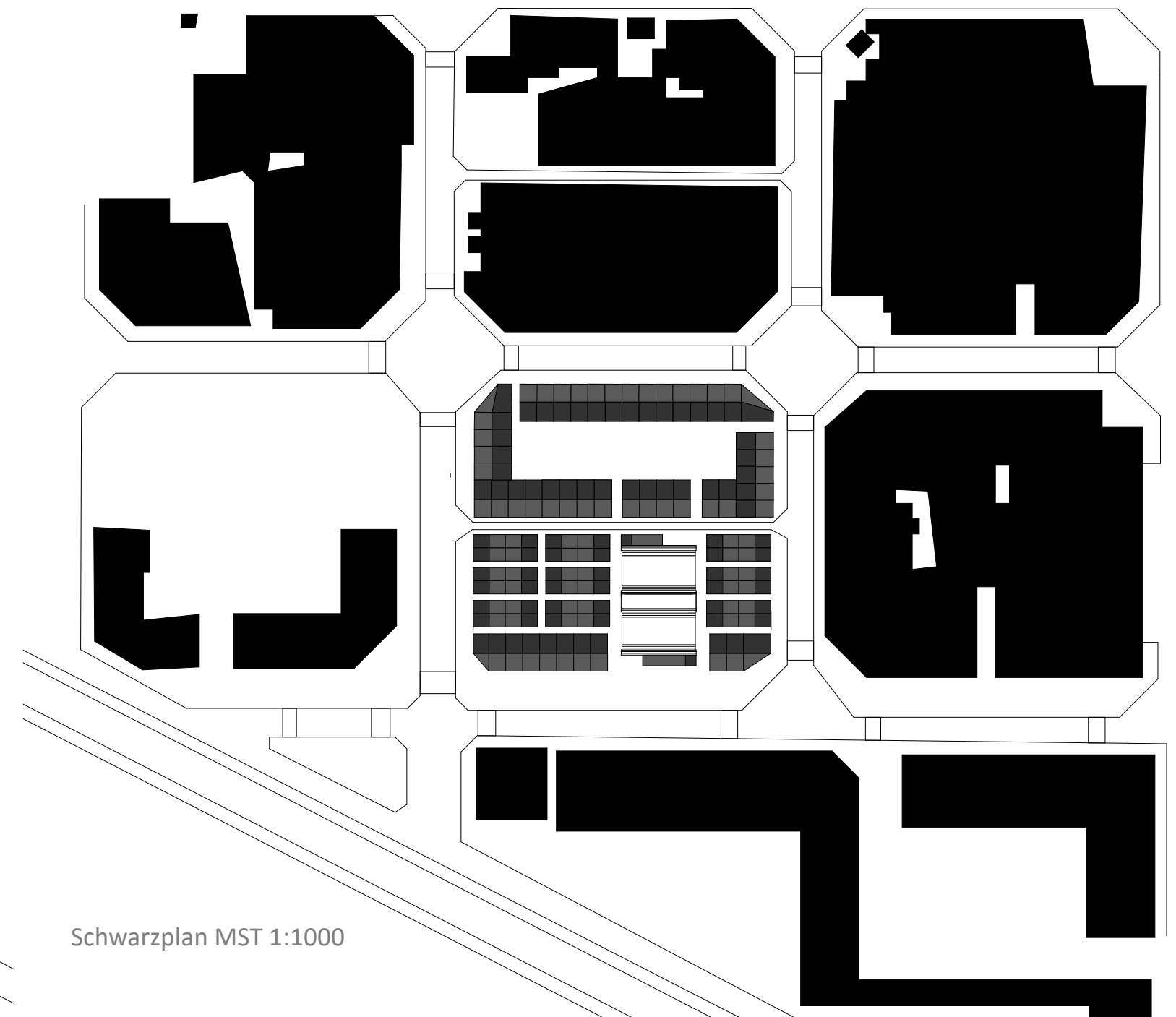
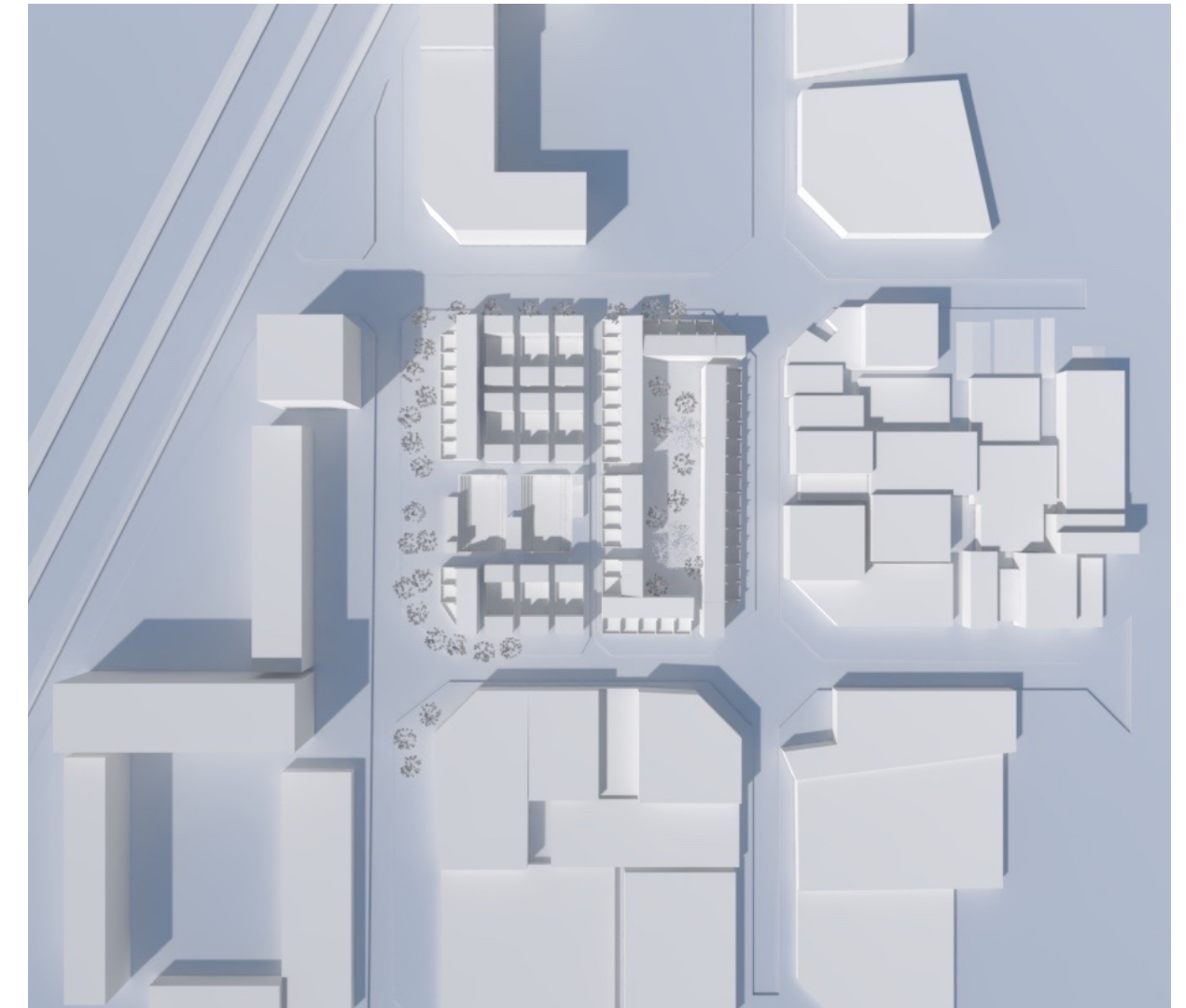
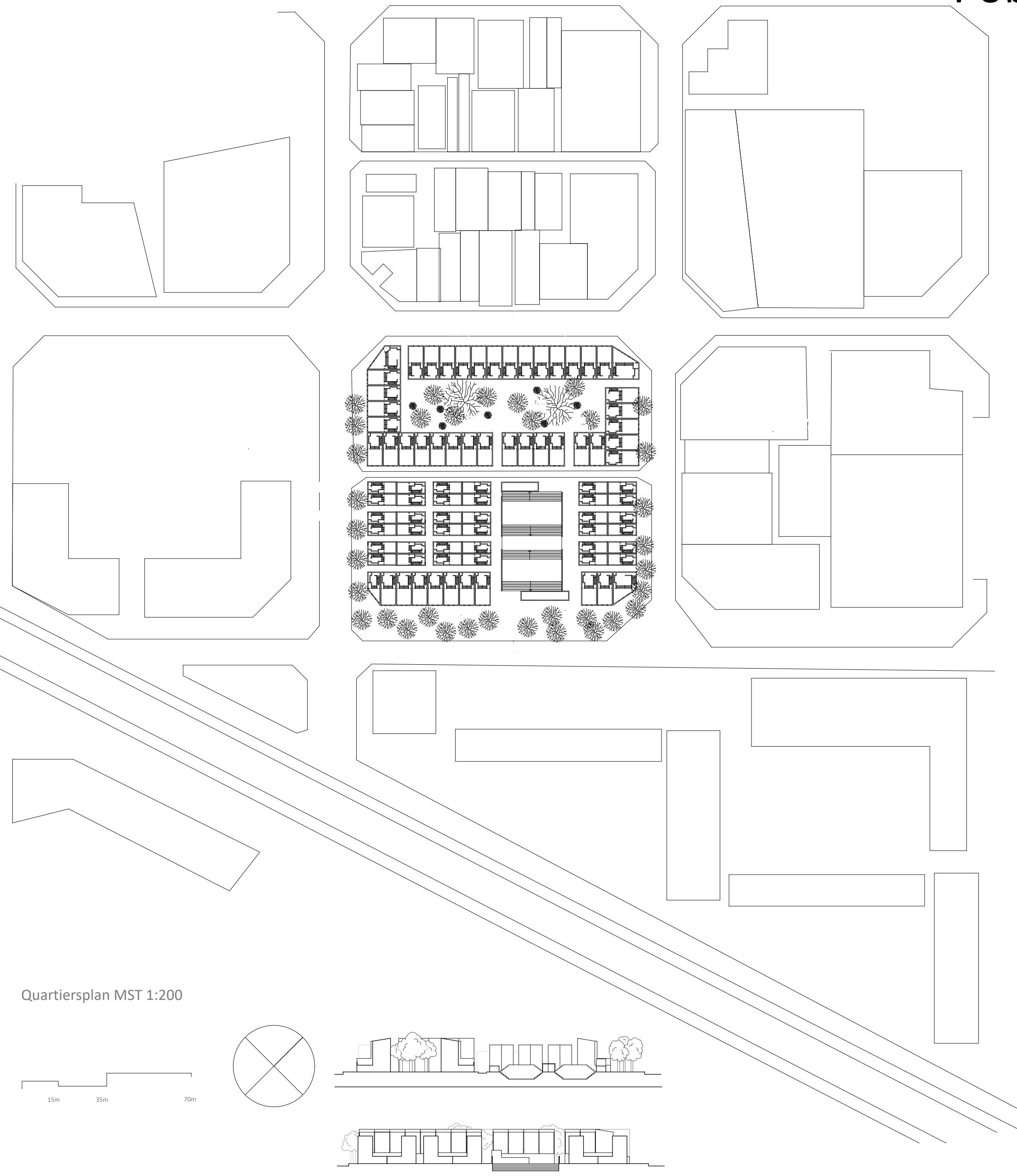
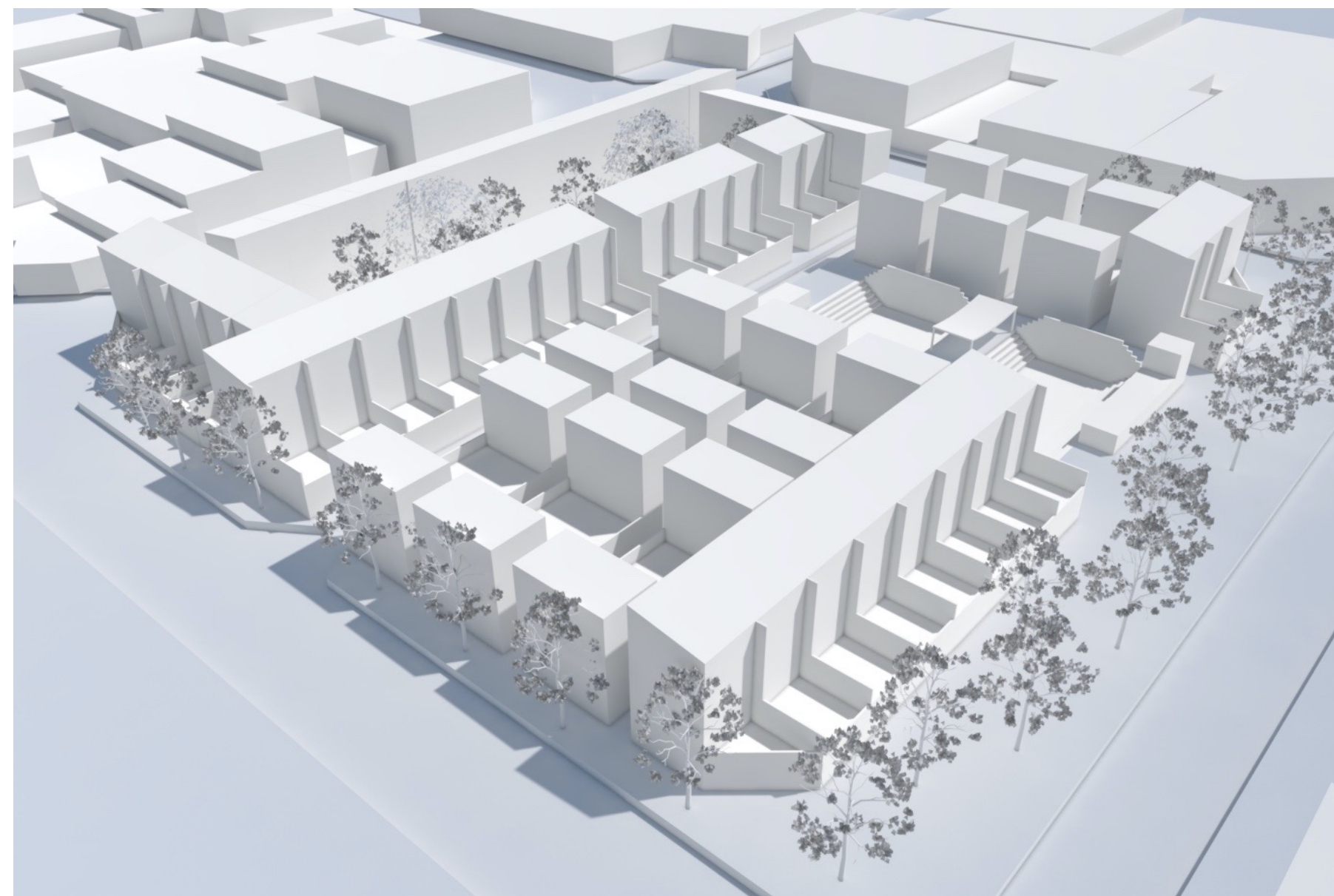
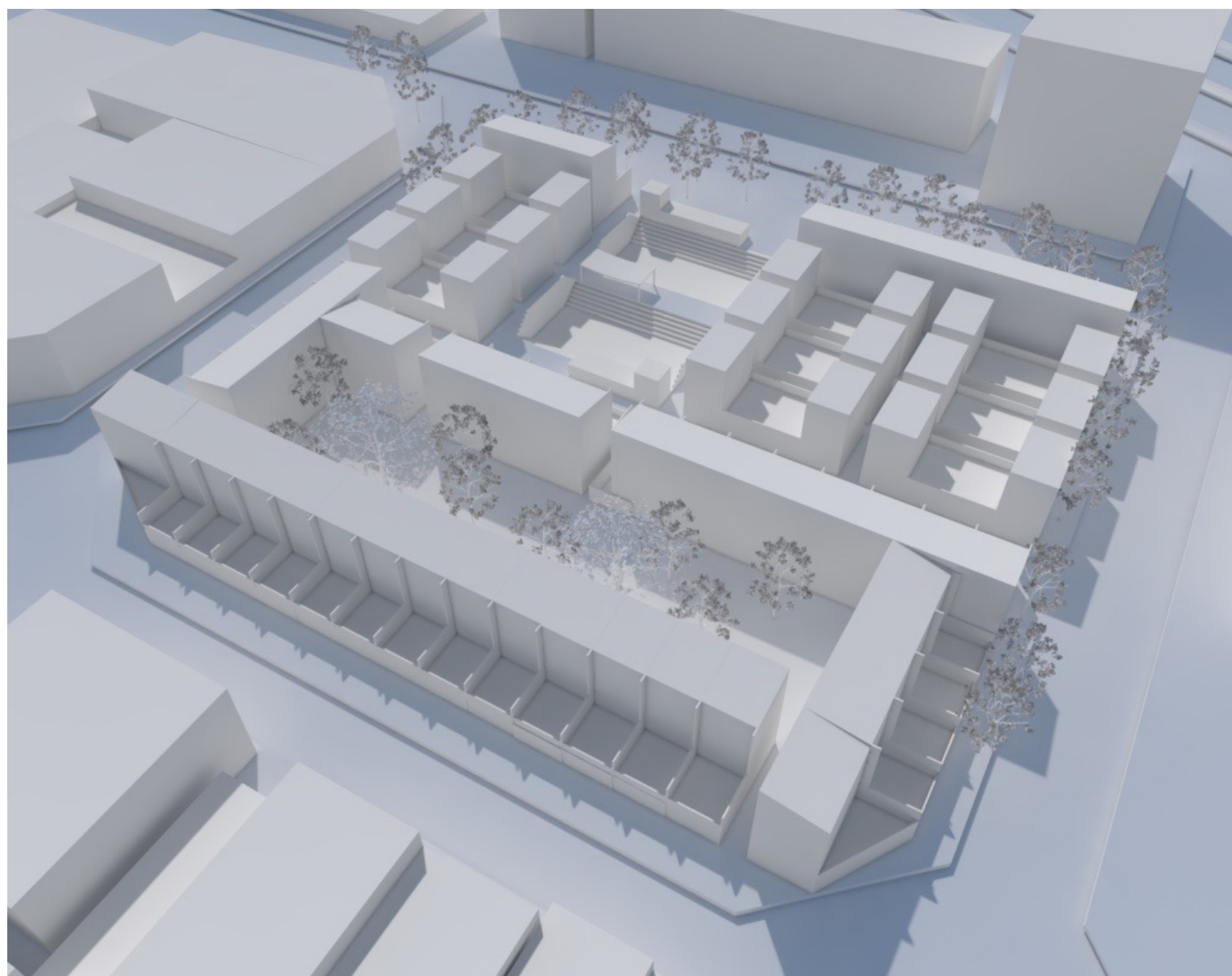
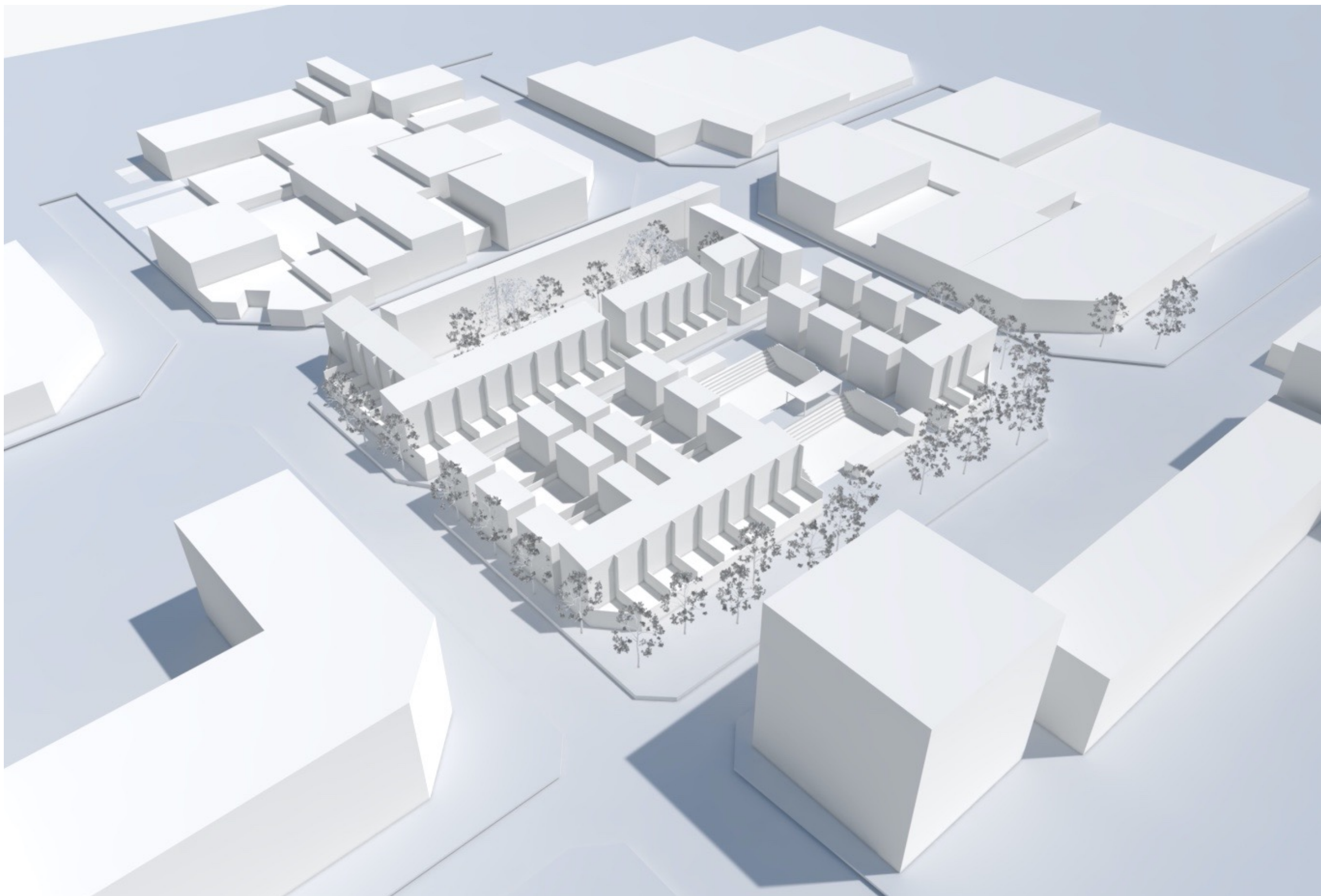


Poblenou – Ein Städtisches Quartier

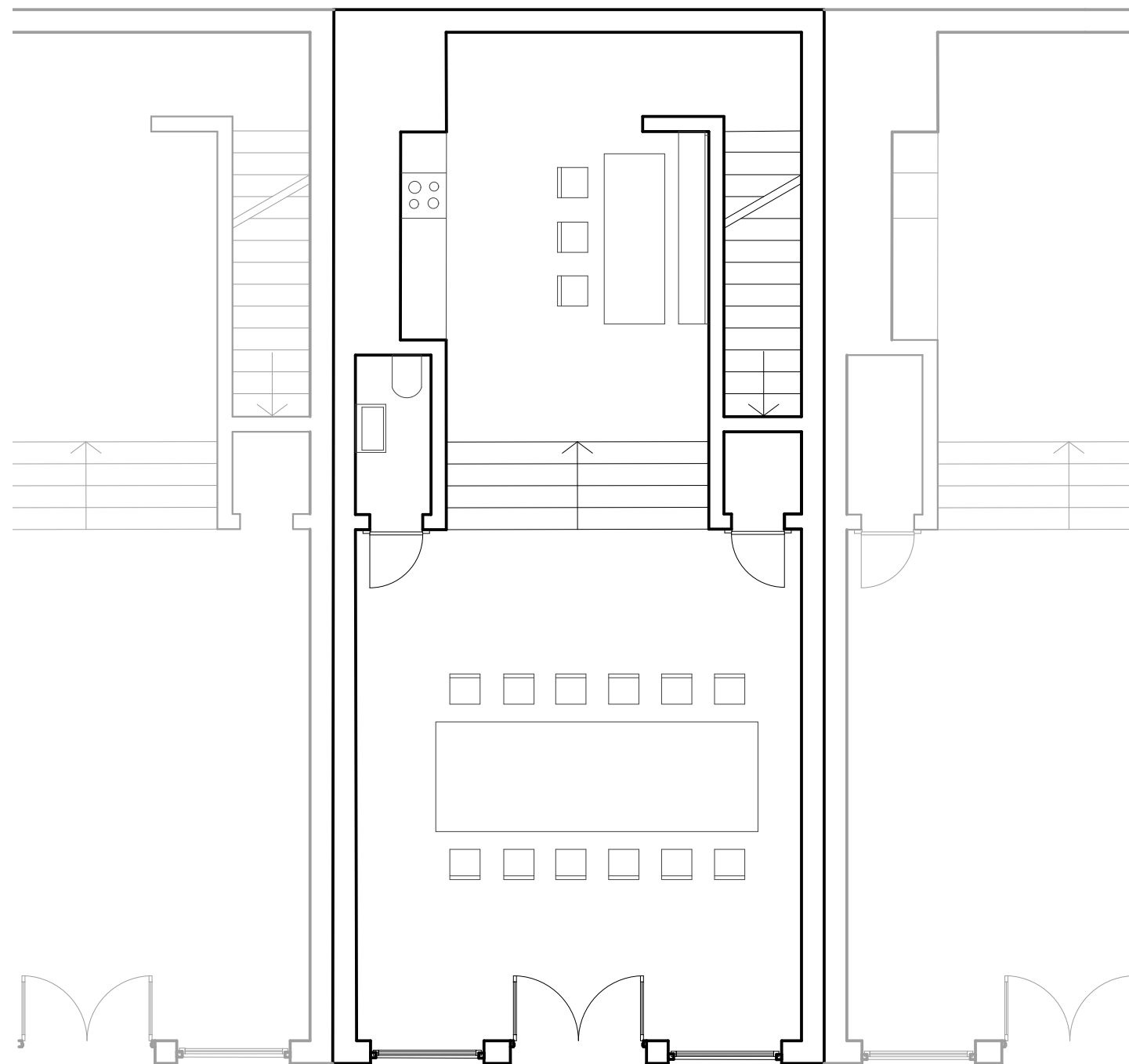


Lea Jenzer, 20-921-862

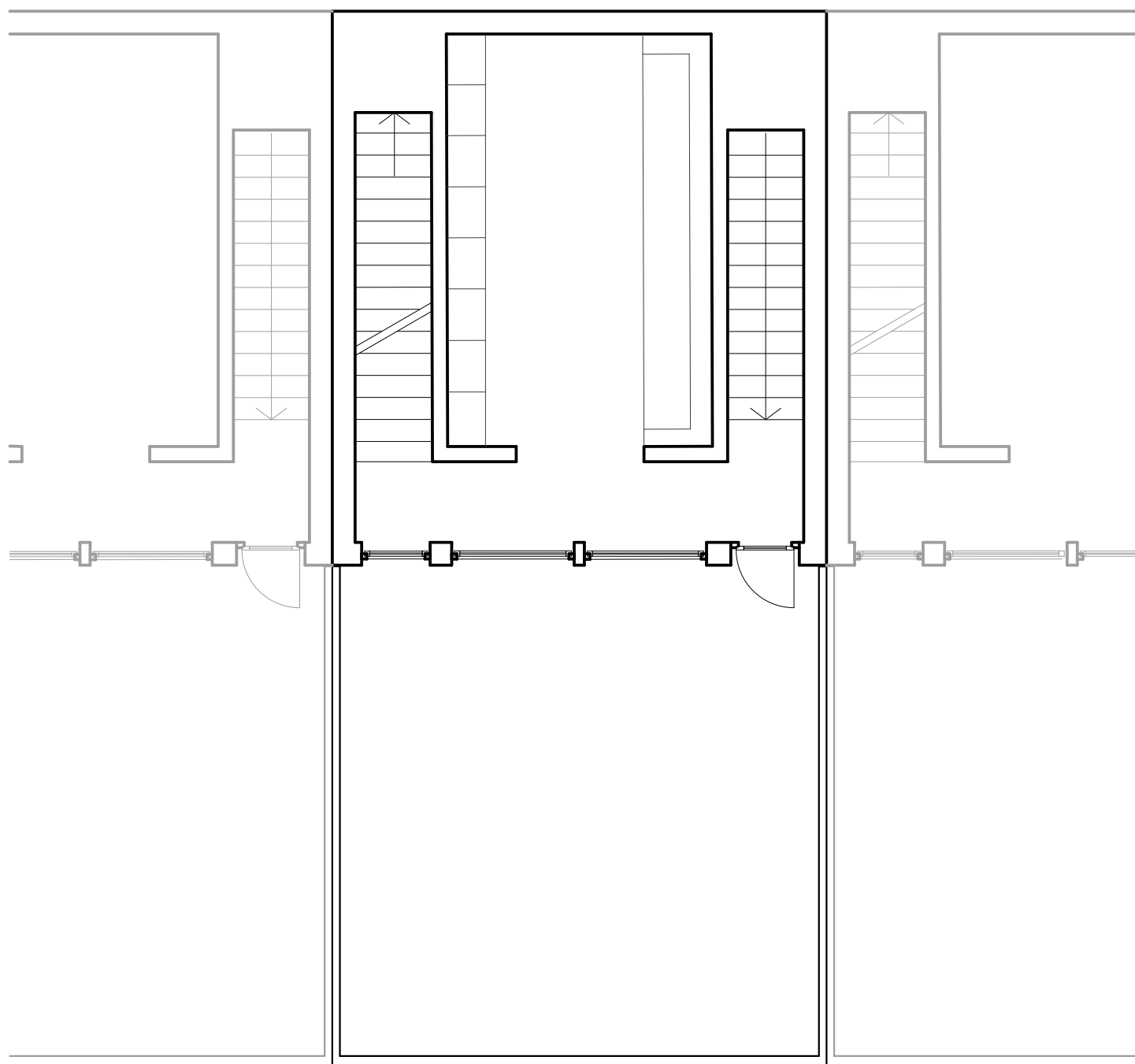


Poblenou – Ein Stadthaus

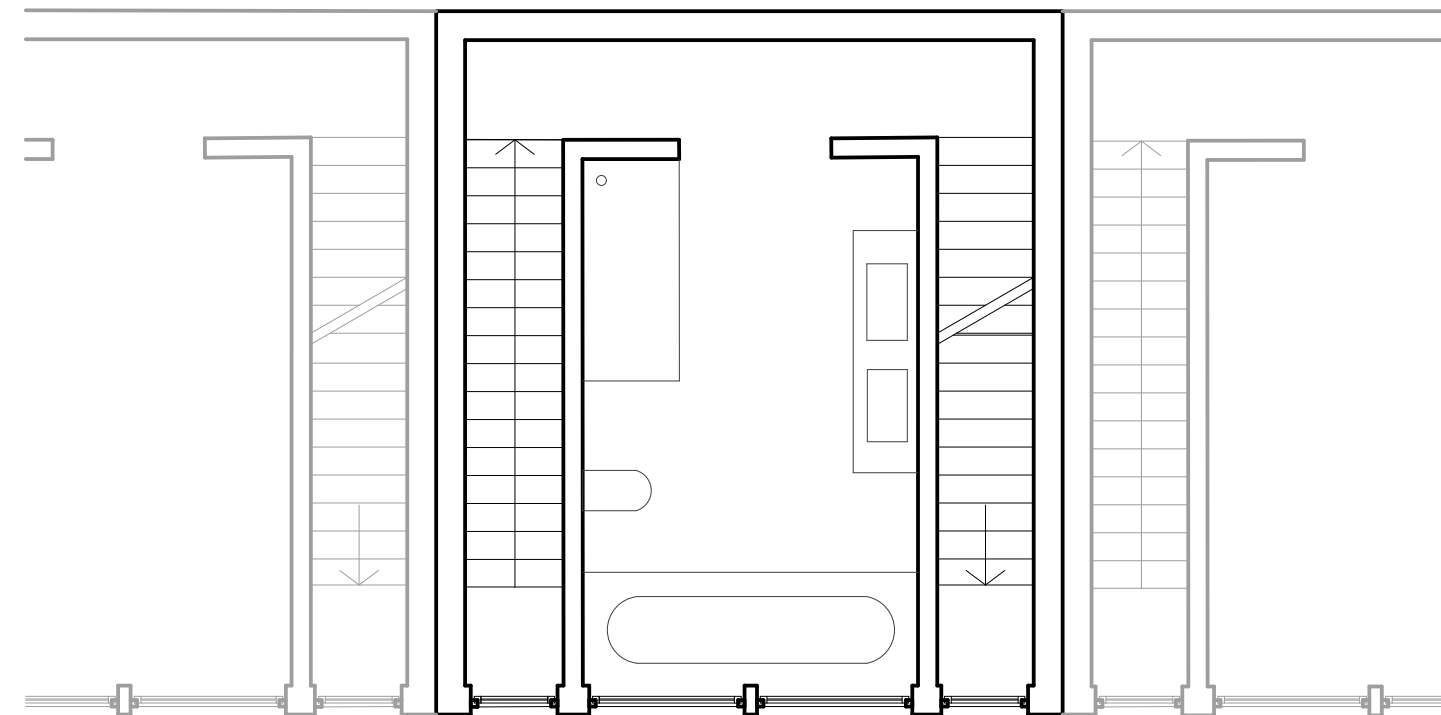
Grundrisse MST 1:100



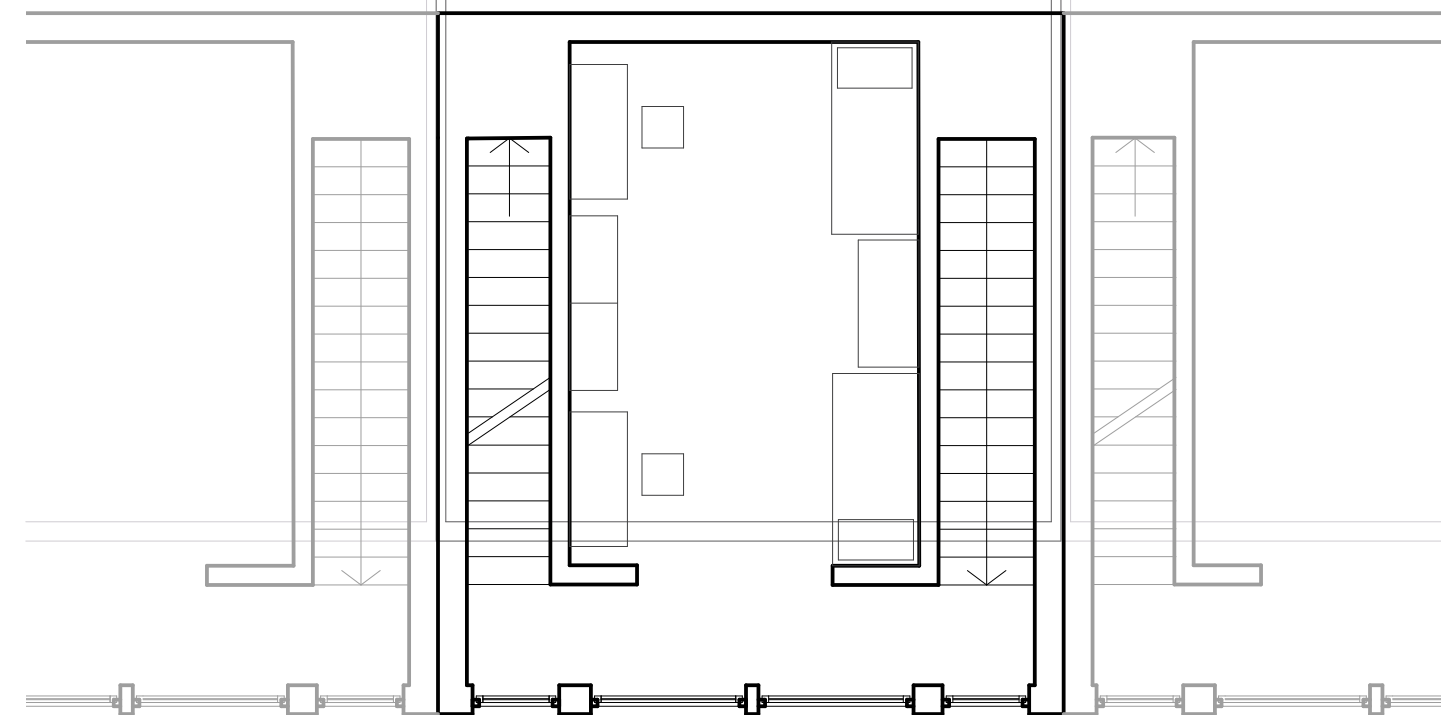
EG



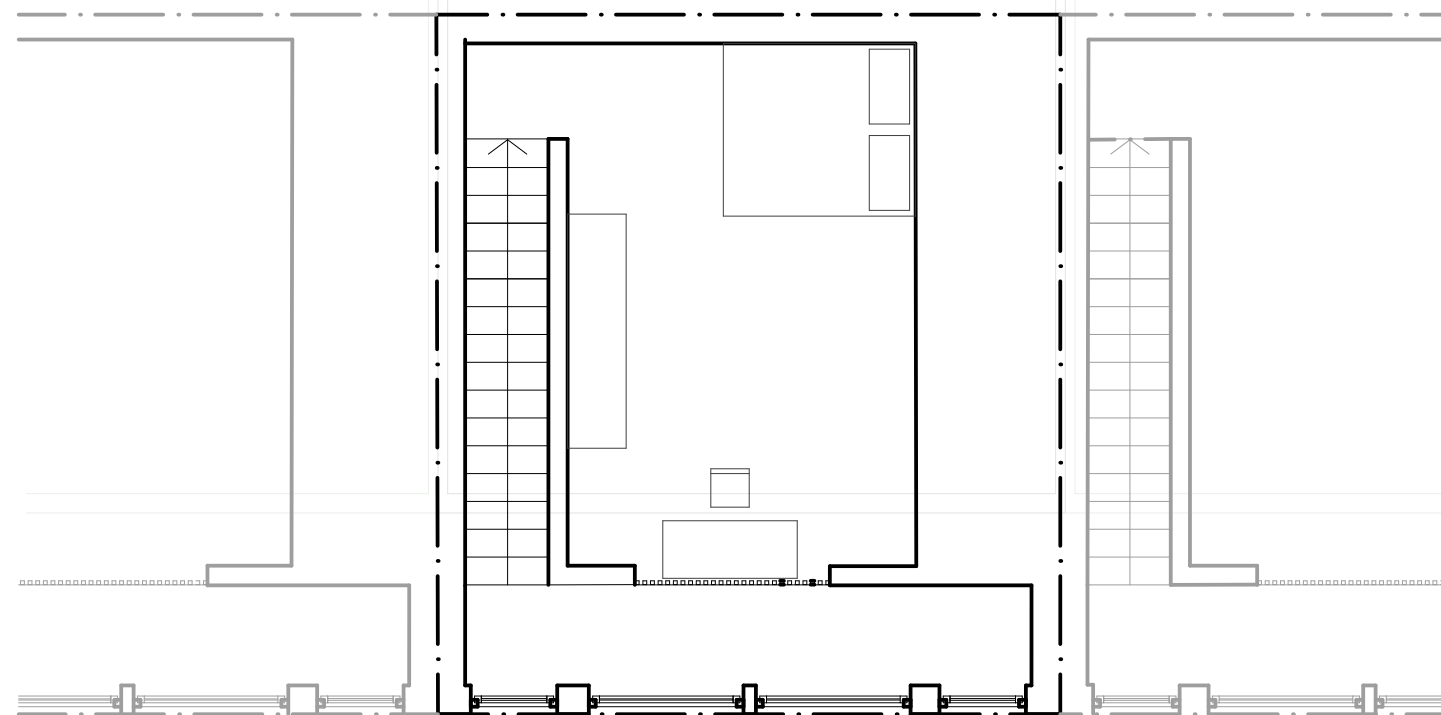
1. OG



2. OG



3. OG



4. OG

Lea Jenzer, 20-921-862

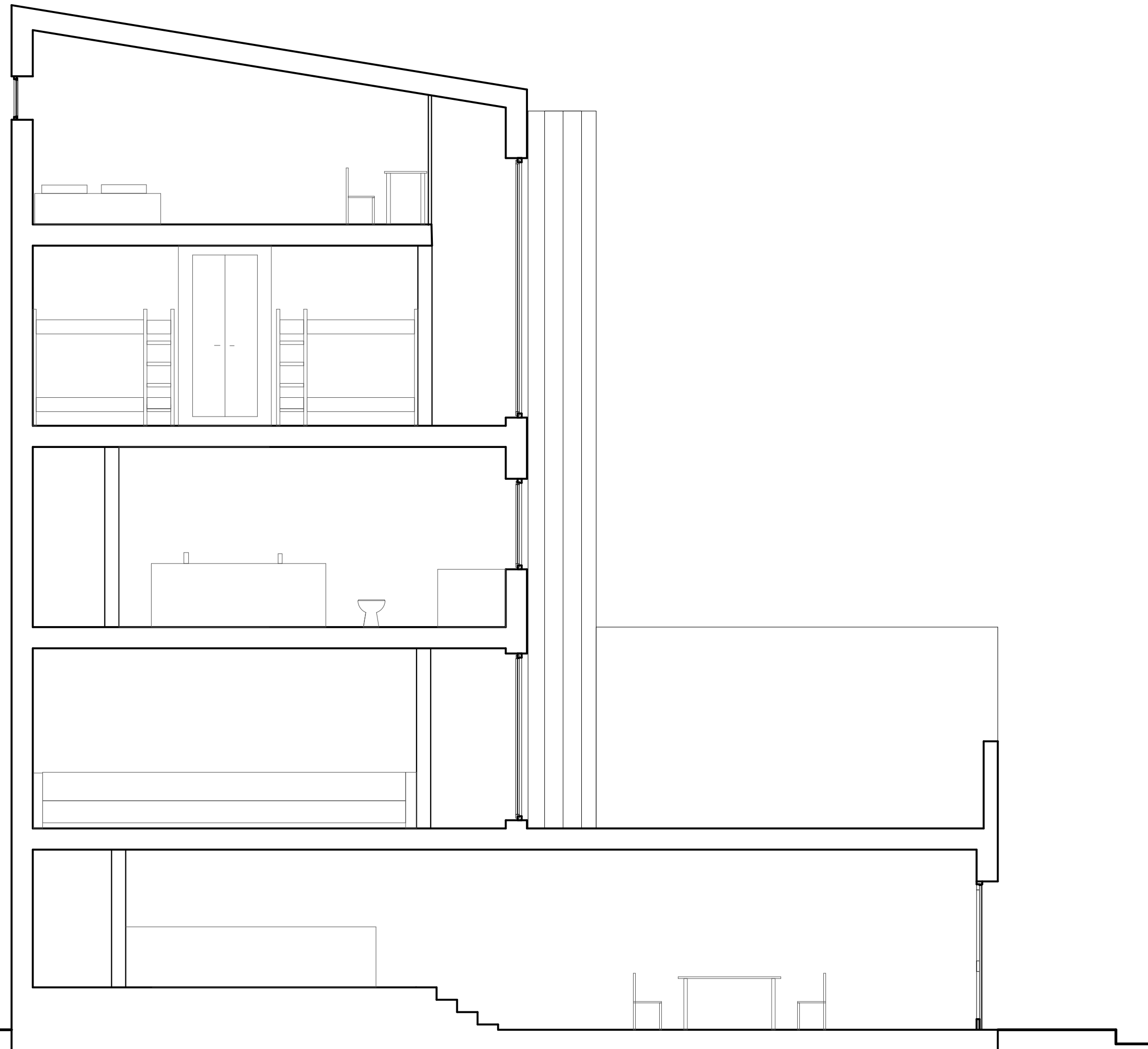
Professur Deplazes, Departement Architektur, ETH Zürich, Entwurf und Konstruktion II, FS21, Atelier Hoffmann

Poblenou – Ein Stadthaus

Hausschnitt MST 1:100

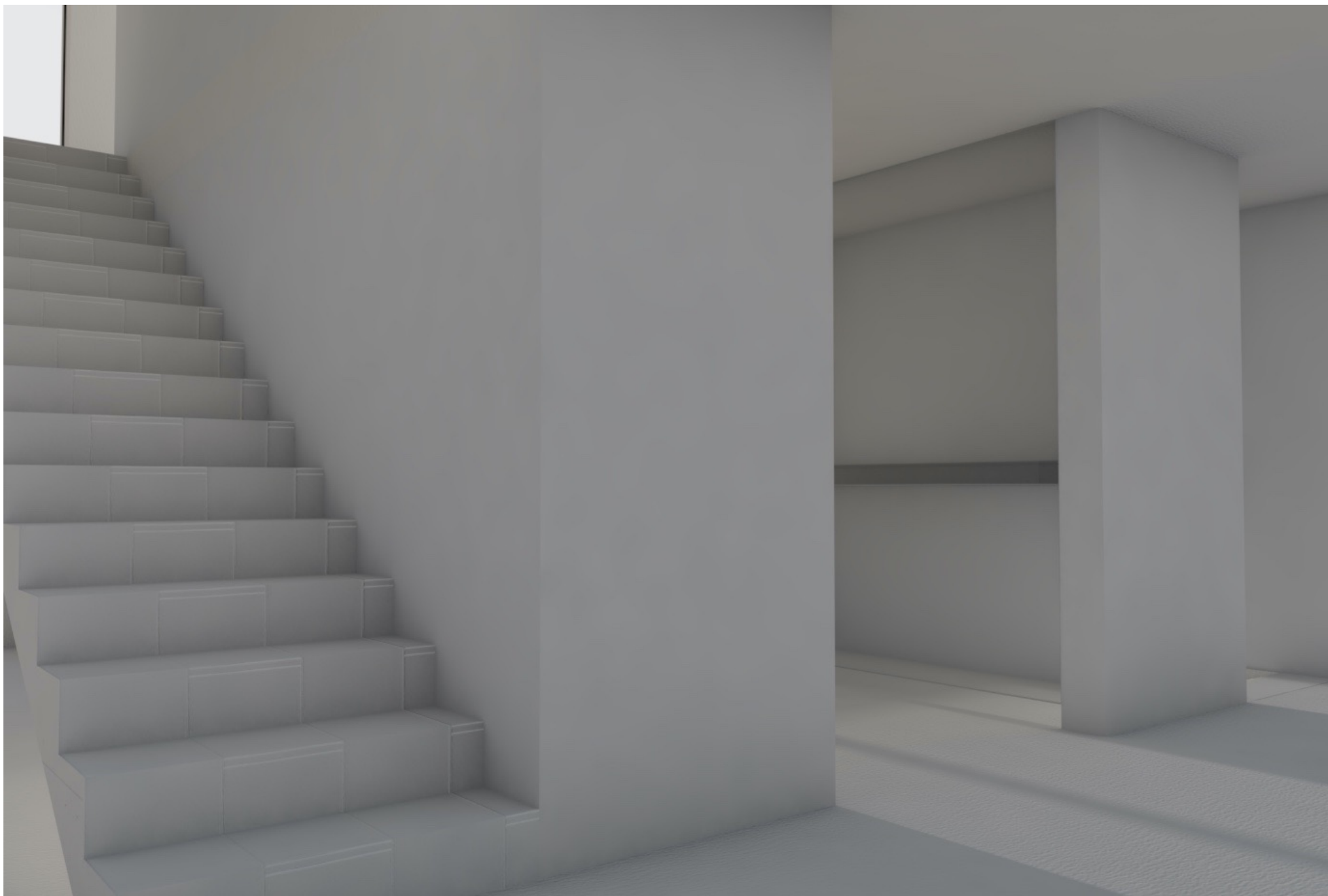
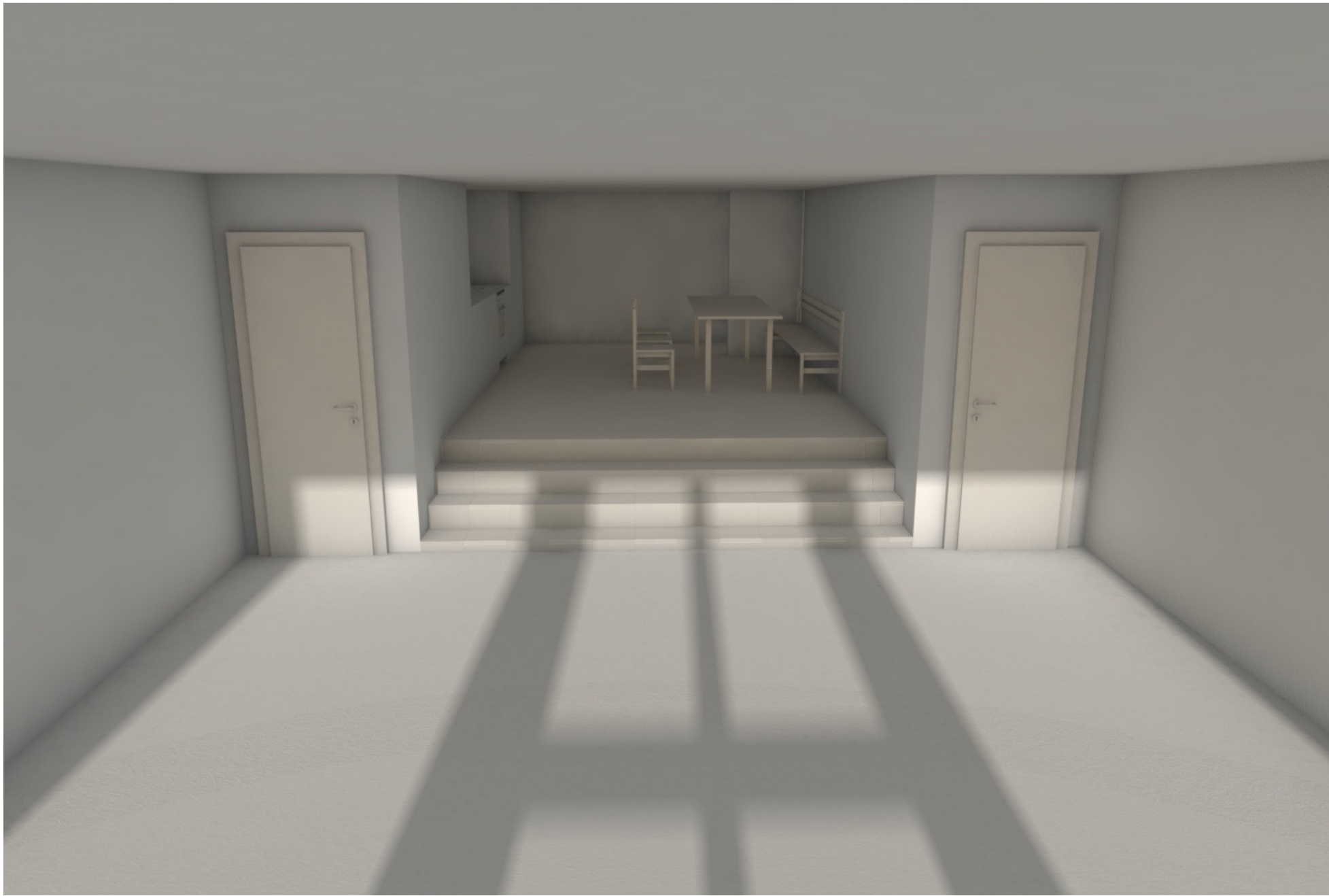


Materialisierung; verputztes Mauerwerk



Lea Jenzer, 20-921-862

Professur Deplazes, Departement Architektur, ETH Zürich, Entwurf und Konstruktion II, FS21, Atelier Hoffmann



Welcome to the presentation of my new structured square in poblenou. My main goal was to combine workplaces with the ordinary everyday life.

I divided the square into two pieces by the already given main street. The upper portion of my square is planned to be the area in which you can work and live.

The lower part of my L-Formed house in which the inhabitants work is at the outside to create a welcoming gesture. In the middle is a large park area surrounded by the taller component of the building where the living is placed. With this created wall the park is cut off from the outside and gives a chance to relax.

Two entrances at the top connect the park to the outside, while two on the bottom connect it to the other half.

The lower part of my square is assigned to the more private life. Smaller, two paired buildings are composed at the lower part of the L to create a patio for the inhabitants. At the right side of this half there is a broad sport field. Due to the lower position of both fields and the connection through stairs you can either play there or just sit and enjoy. At the bottom of the square there is a line of houses facing the street similar to the ones on the upper part to frame the private area.