

# POBLENOU, BLOCK II

DESIGN AND CONSTRUCTION II, FS 21 ETH ZÜRICH

ARIANNA LURATI

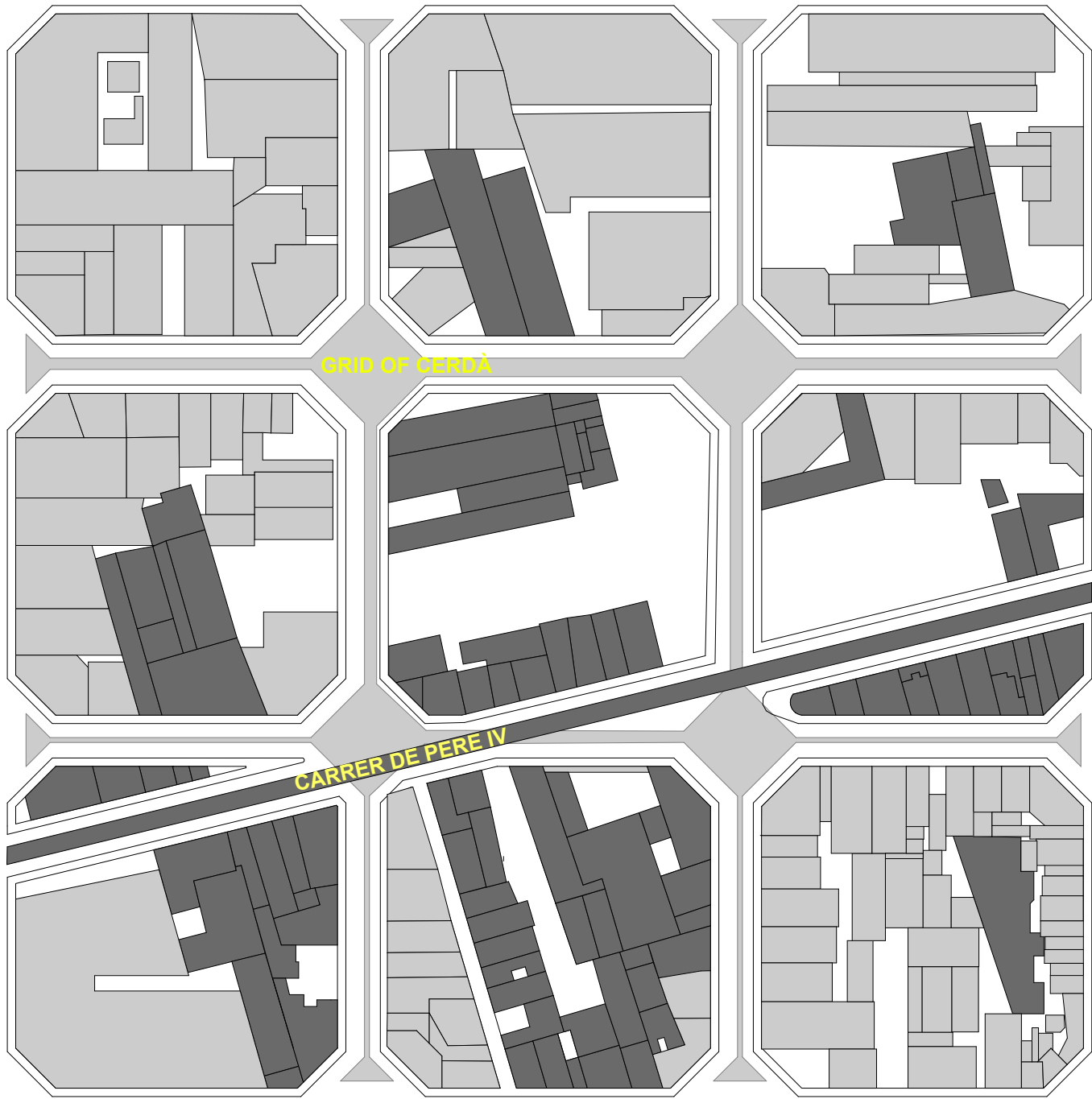
POBLENOU

Exploring Poblenou, I focused my attention on the road grid. Currently, the external geometry of the Carrè, composed by the historical axis Carrer de Pere IV and the regular grid designed for the extension of the periphery of Barcelona by Ildefonso Cerdà, have a great influence on the orientation of the buildings within each Carrè.

Keeping this concept of great influence of the external geometry in the organization of the building inside the Carrè, I have defined the basic structure of my project.

The new neighborhood consists of two horizontally densely built blocks and a central area. This high density of the two blocks is generated by the combination of L-shaped atelier houses. The entrance doors to the atelier houses are located in the covered passage. By varying the size and placement of the inner courtyards in relation to the passages and the number and orientation of the atelier houses, the neighborhood offers different degrees of collectively and privatization (e.g. Corralas, Madrid). This makes it possible to accommodate different life- and work styles. In the center of the neighborhood we find a large open public space accessible through covered passages as well as from the sides. This space allows inhabitants as well as visitors to have a recreational place where they can have social interactions .

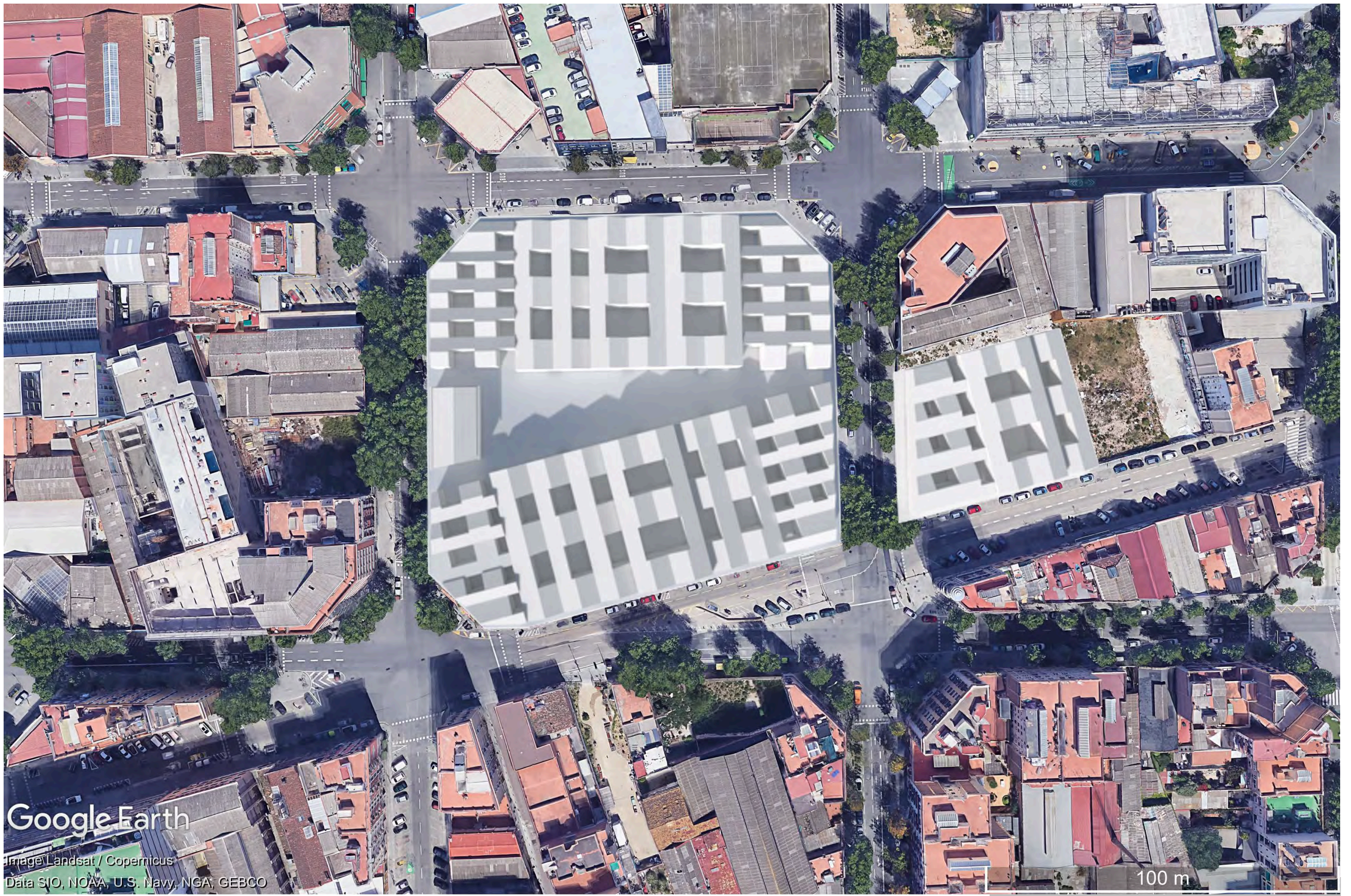
The L-shaped atelier house with a courtyard has three floors. The organization of the public and private spaces within the house is done by following the motto below-above. On the ground floor I decided to place the working space because it is supposed to be the most public part of the building and therefore when someone enters the atelier house, it is the first place he meets. Above the working area there are two floors for living. On the top floor there are spaces with more private functions, such as bedrooms, while on the first floor there are spaces with functions that can be defined as semi-private, such as the kitchen. The house is built with red bricks in combination with glass. Through the use of red bricks, there is a reference to the industrial architecture of Poblenou. The glass, with its transparency, leads to a connection between outdoor and indoor space, as well as promotes the entry of sunlight into the house.



- Existing infrastructure aligned to GRID OF ROADS DESIGNED BY CERDÀ
- Existing infrastructure aligned to CARRER DE PERE IV







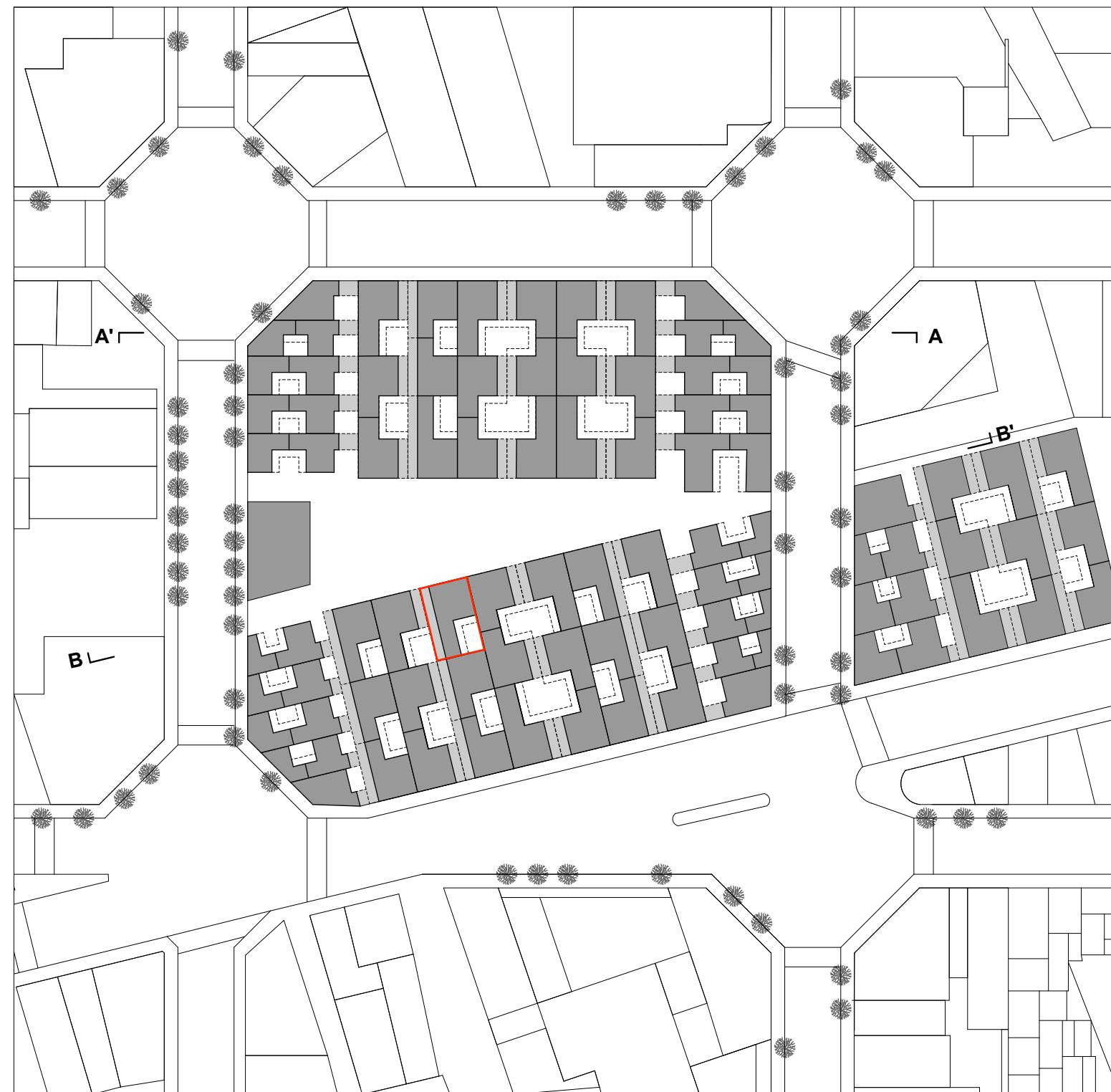
Google Earth

Image Landsat / Copernicus  
Data SIO, NOAA, U.S. Navy, NGA, GEBCO

100 m



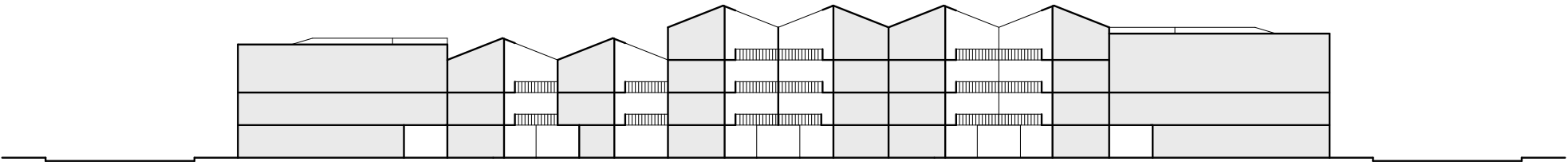




- Ground floor of the buildings
- Atelier house first floor
- First floor terrace
- Atelier house



SECTION A-A'



SECTION B-B'





1 . PUBLIC SPACE



2 . PASSAGE

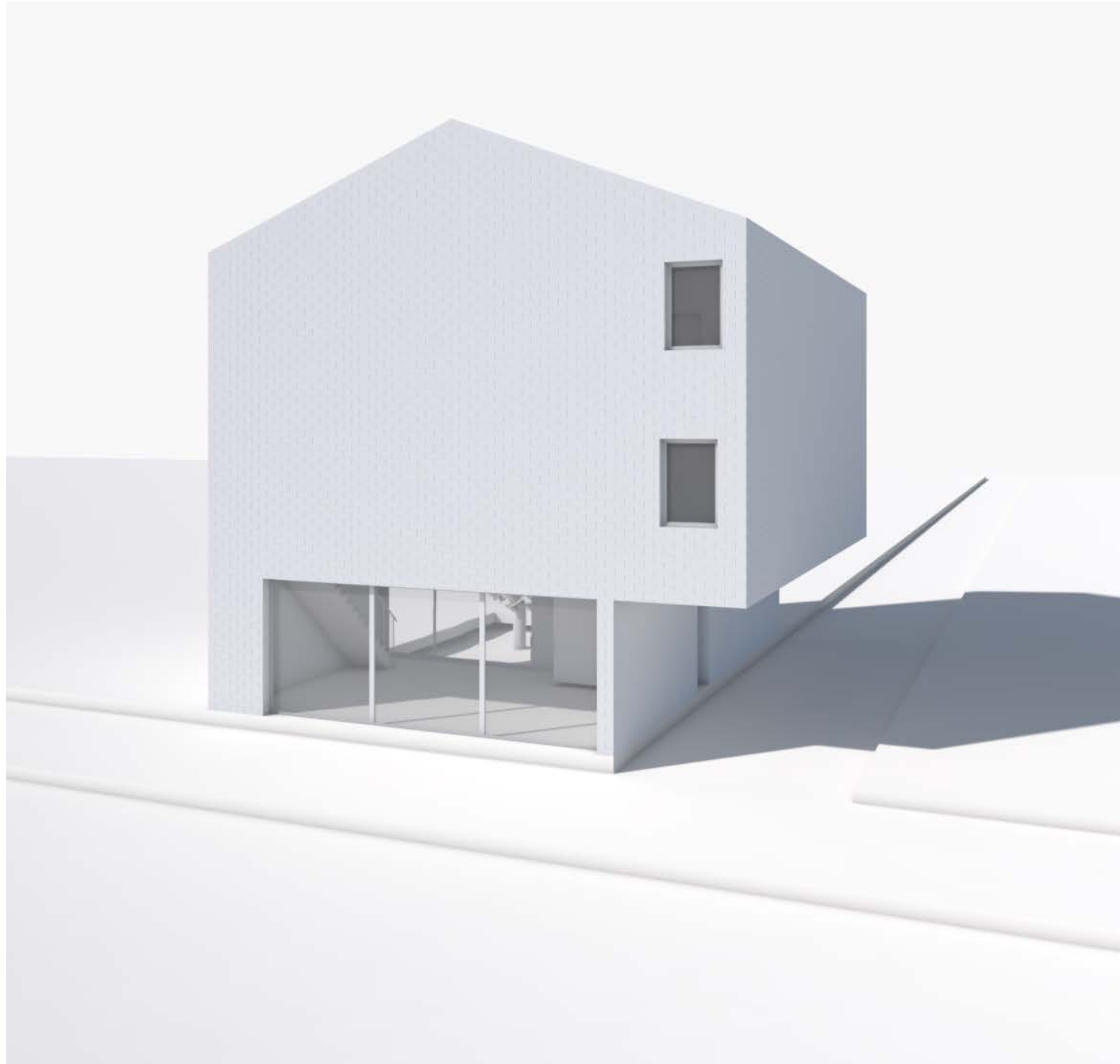


3.VIEW OF THE PUBLIC SPACE FROM THE PUBLIC BUILDING

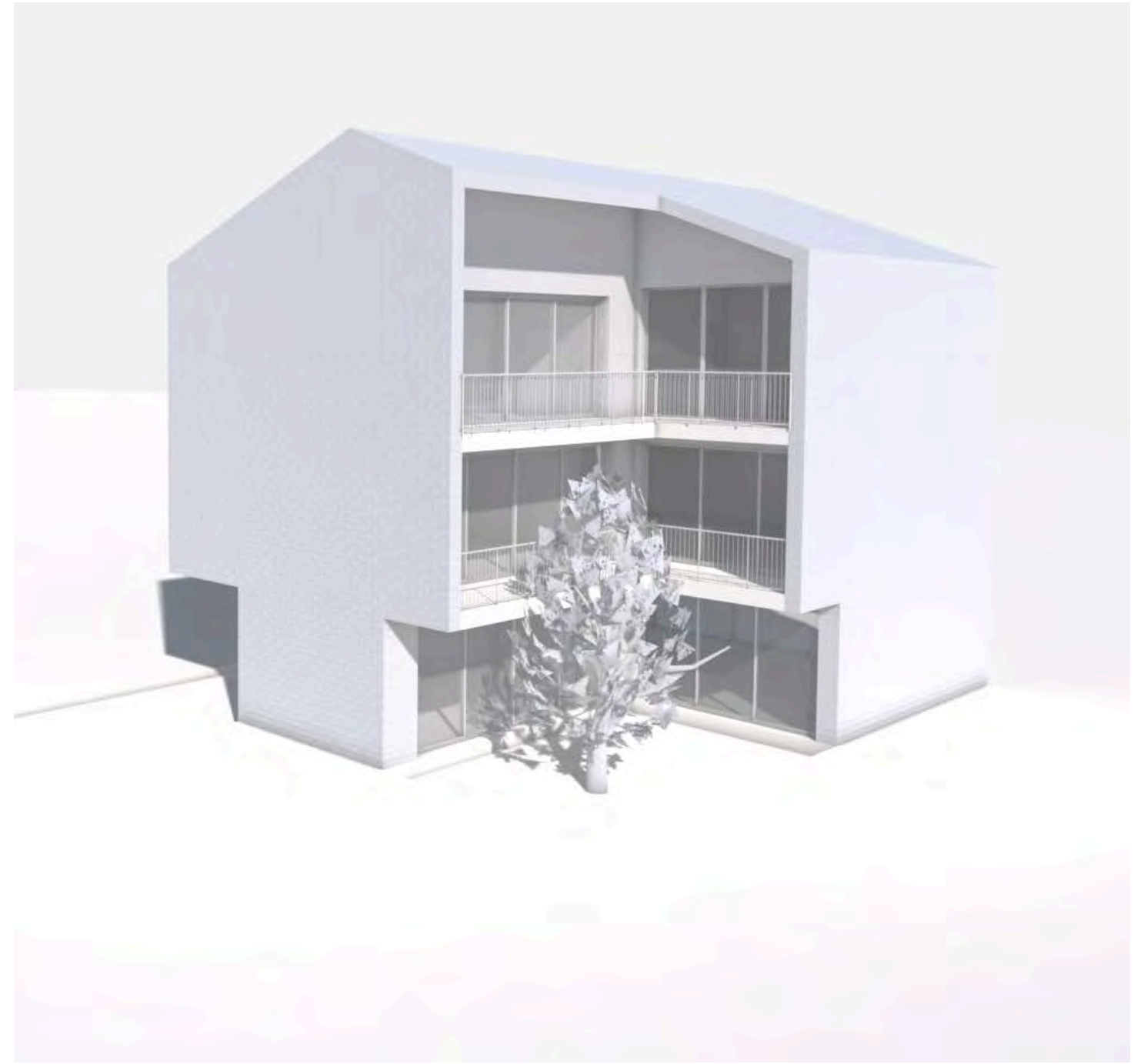






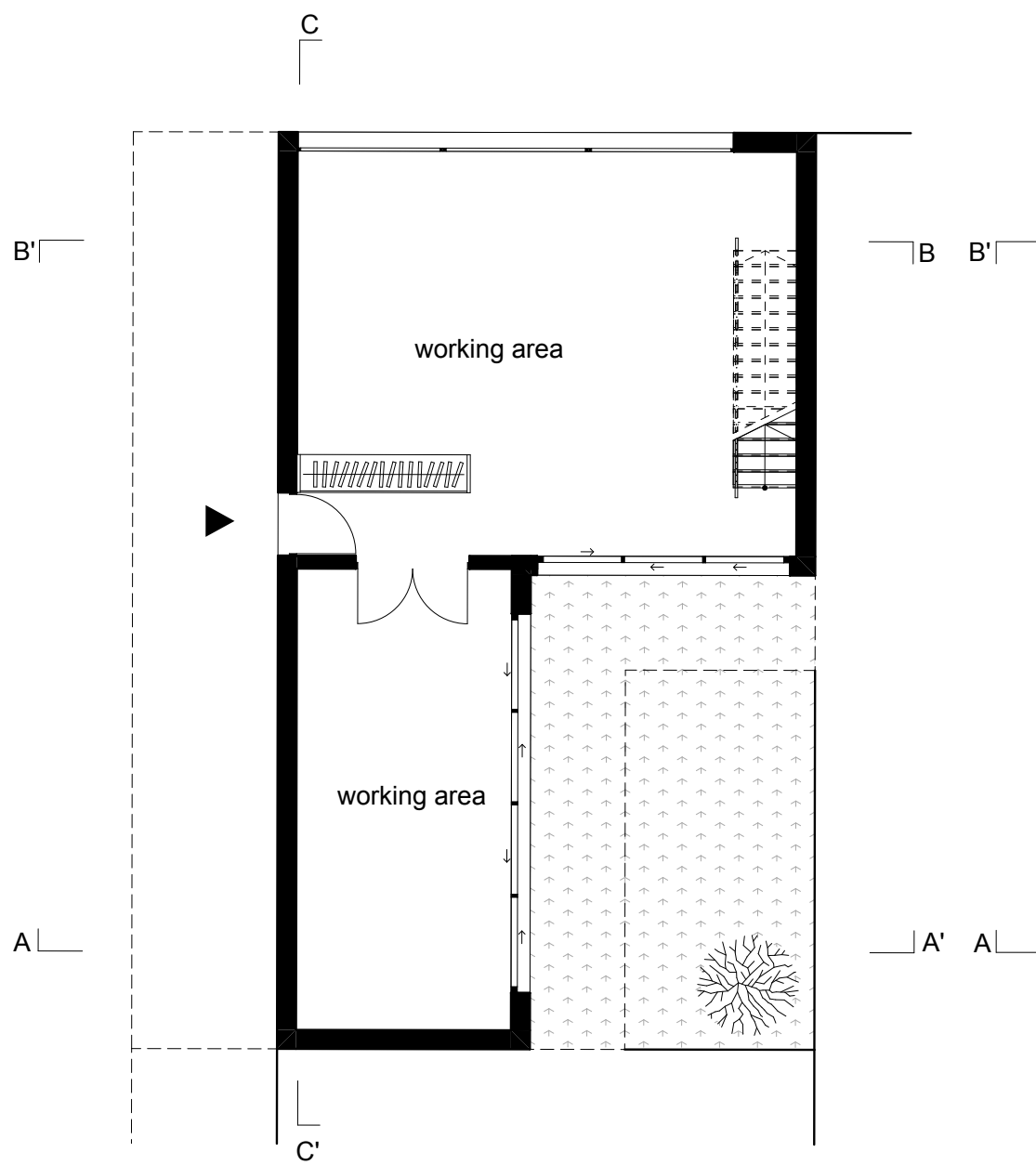


FACADE IN THE DIRECTION OF THE PUBLIC SPACE

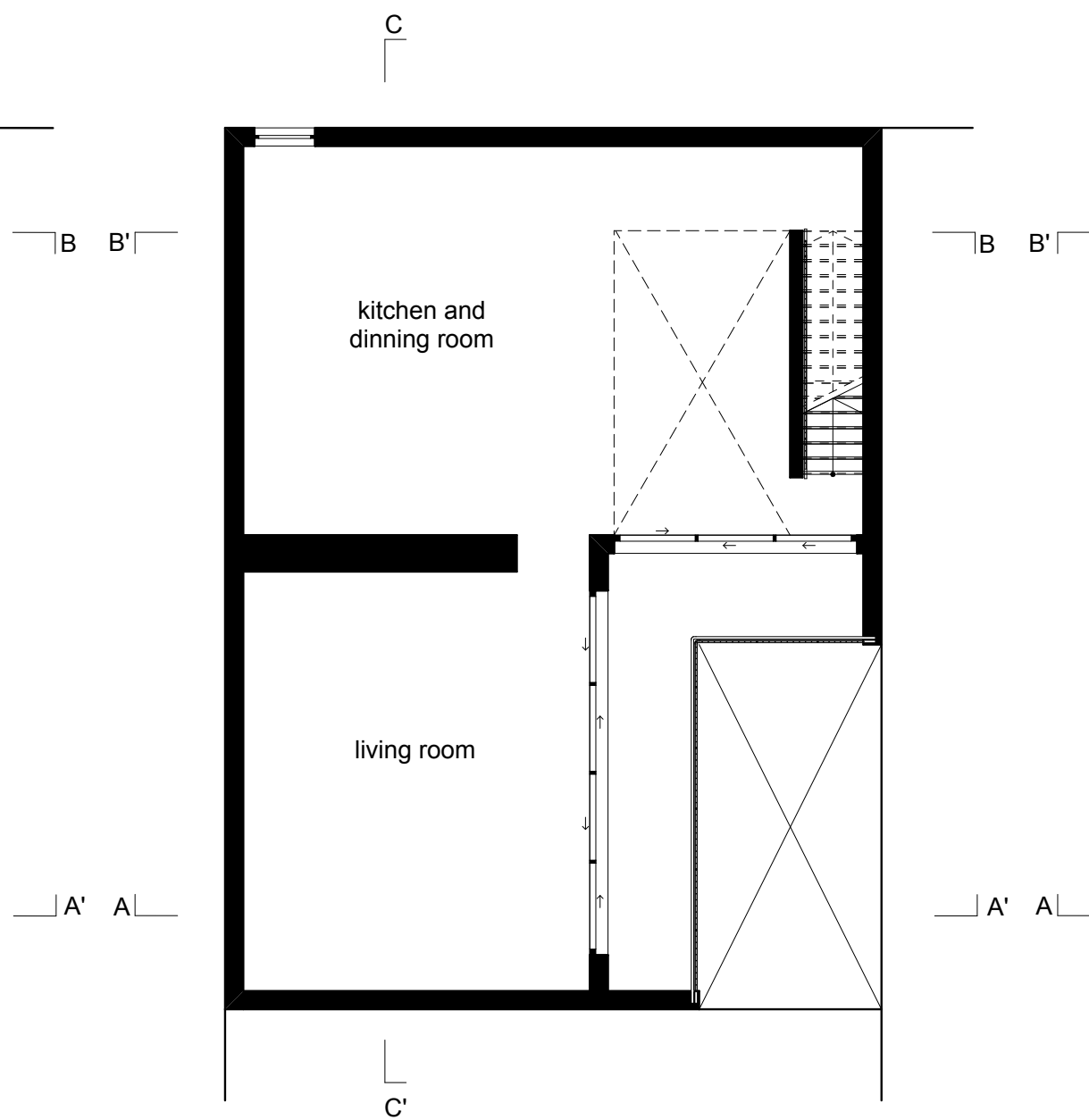


FACADE IN THE DIRECTION OF THE INNER COURTYARD

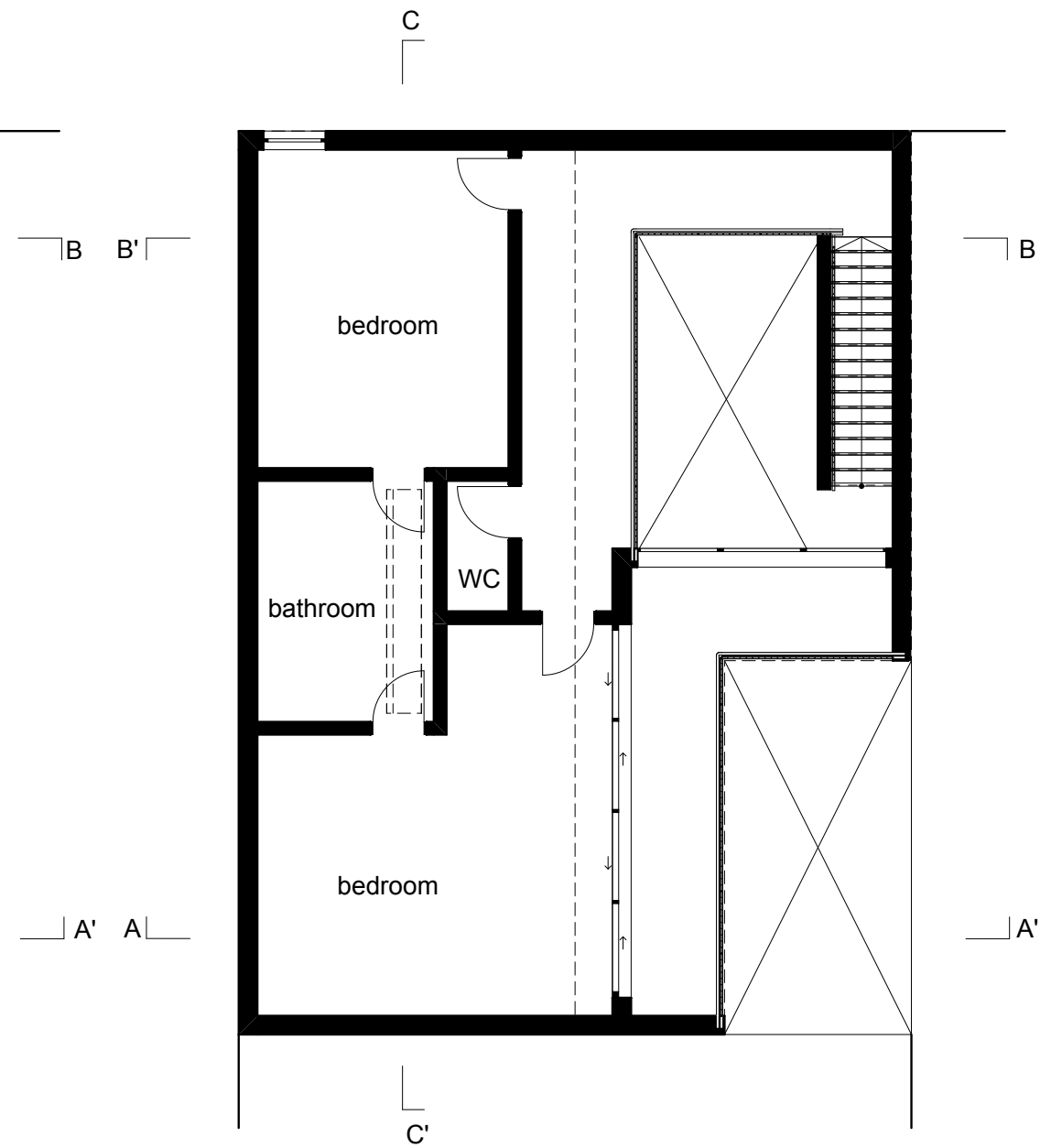




GROUND FLOOR

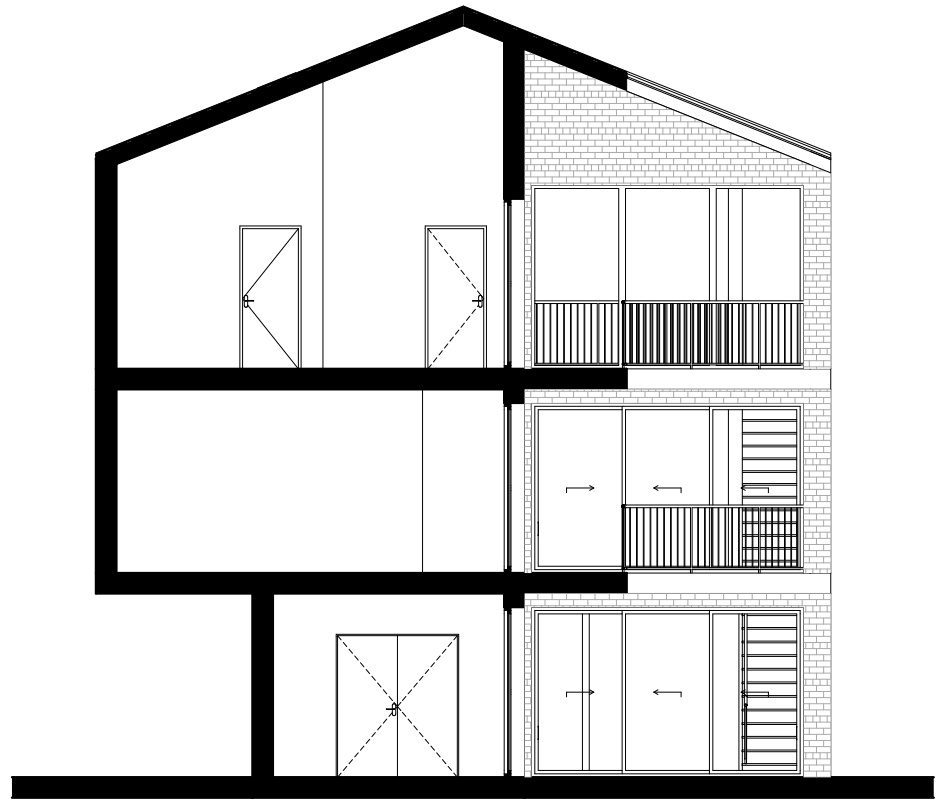


FIRST FLOOR

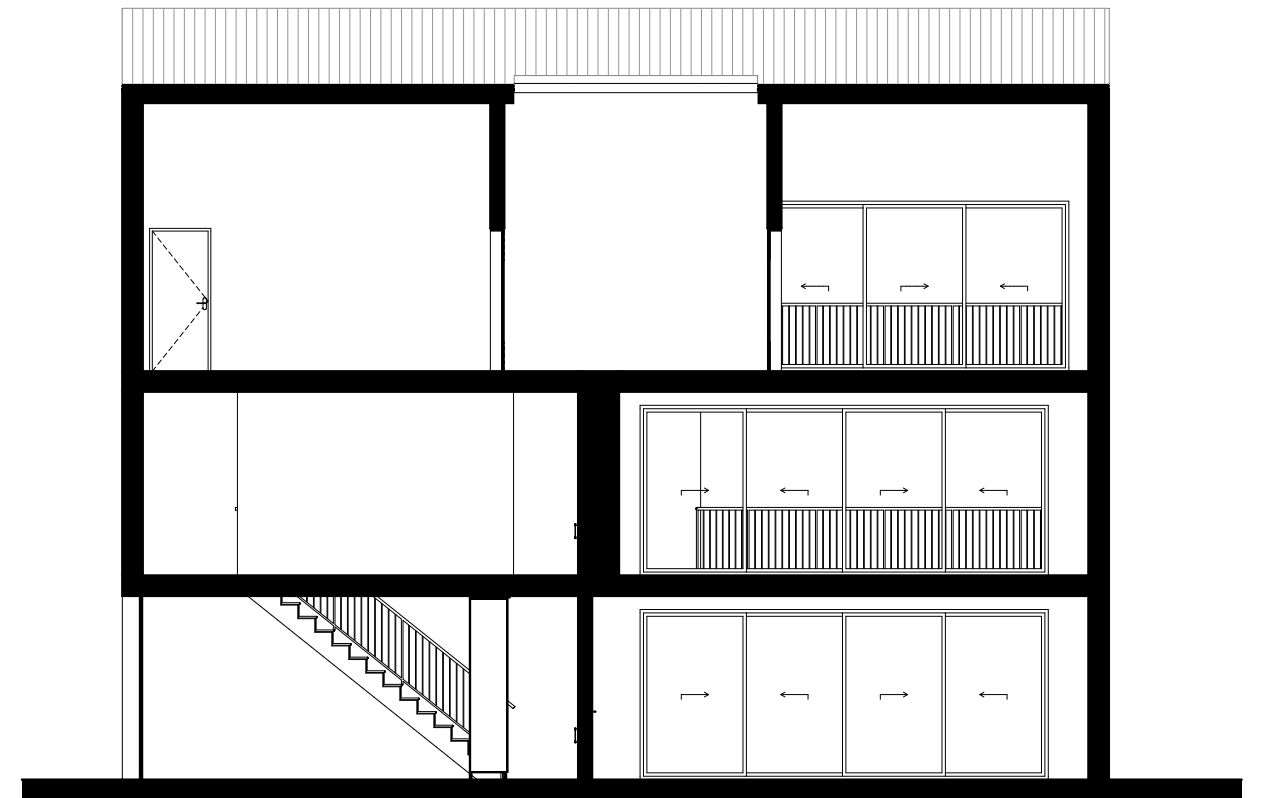


SECOND FLOOR

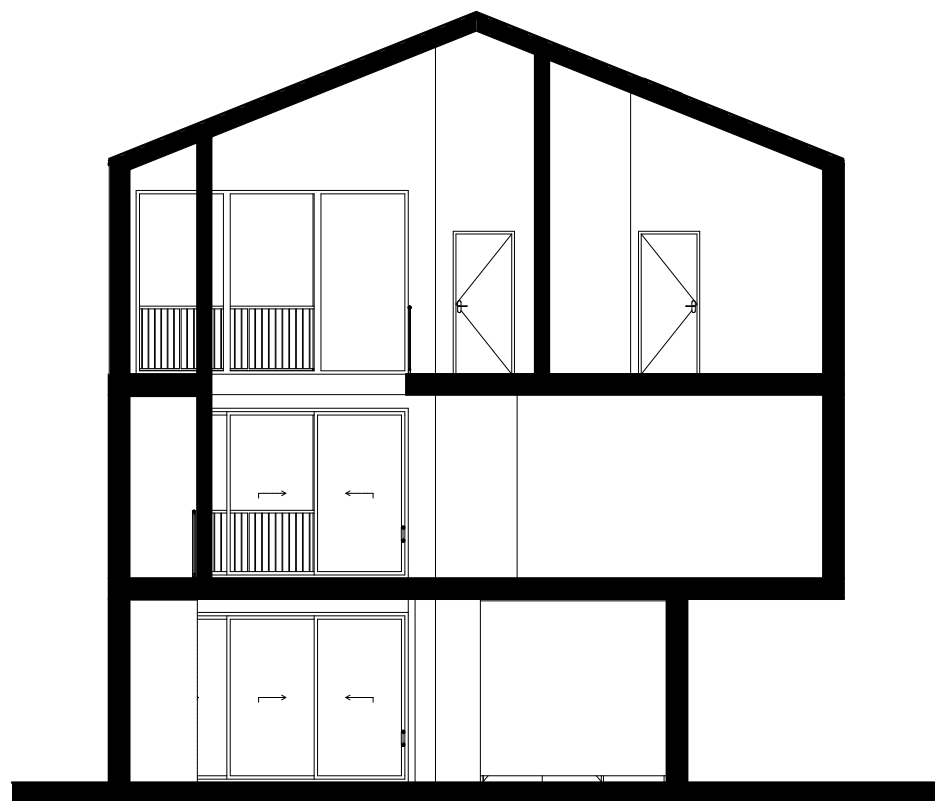




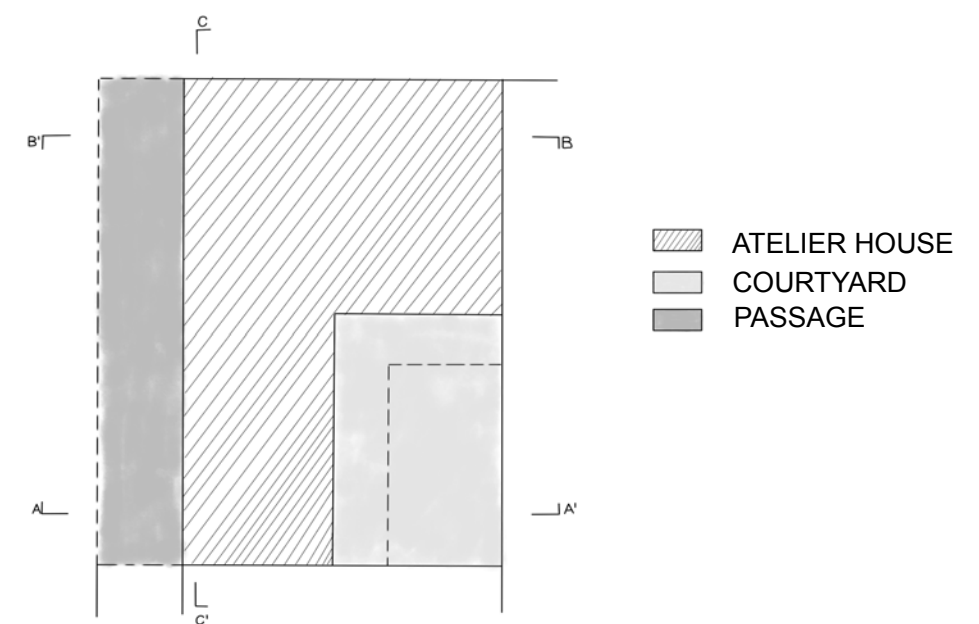
SECTION A-A'



SECTION C-C'

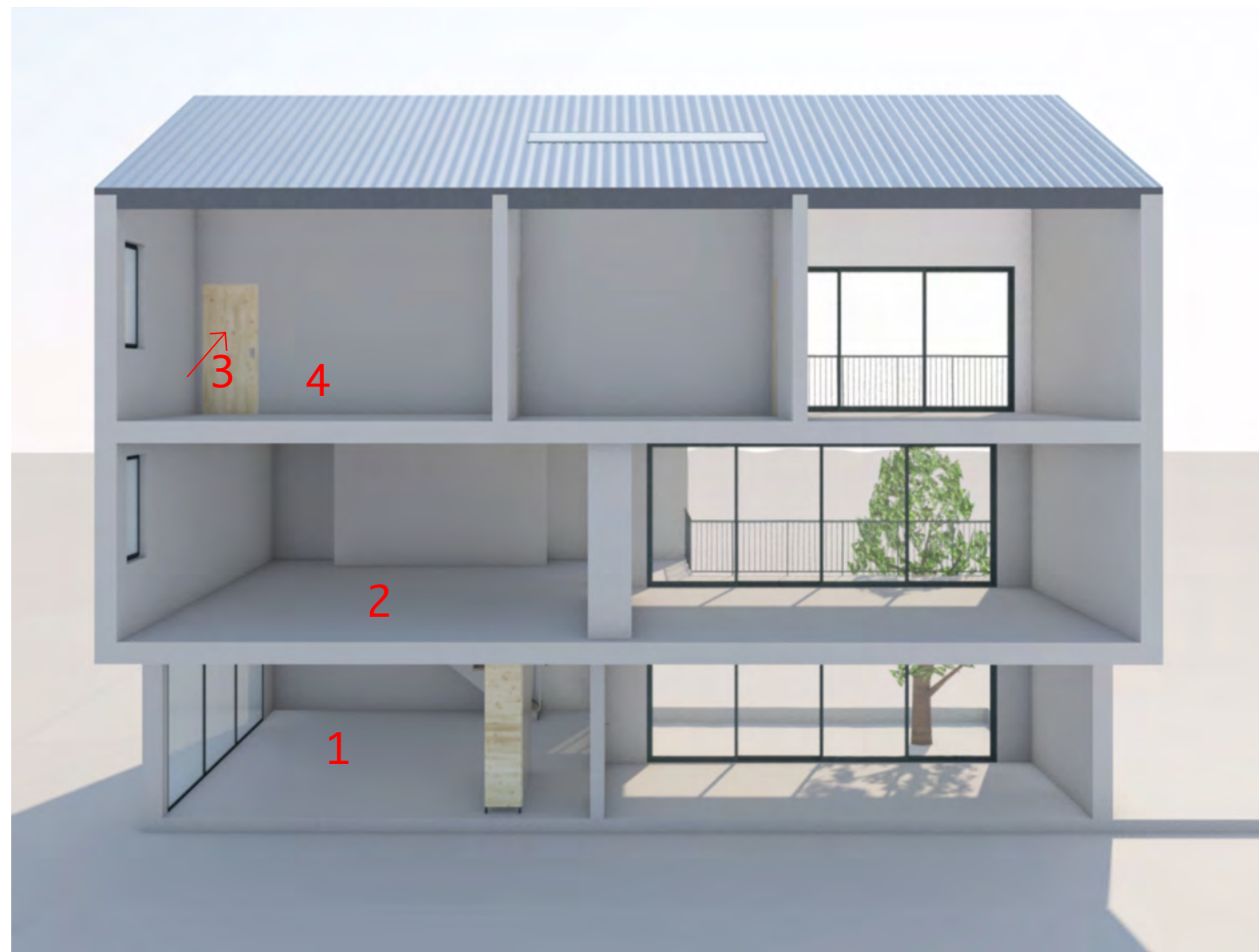


SECTION B-B'

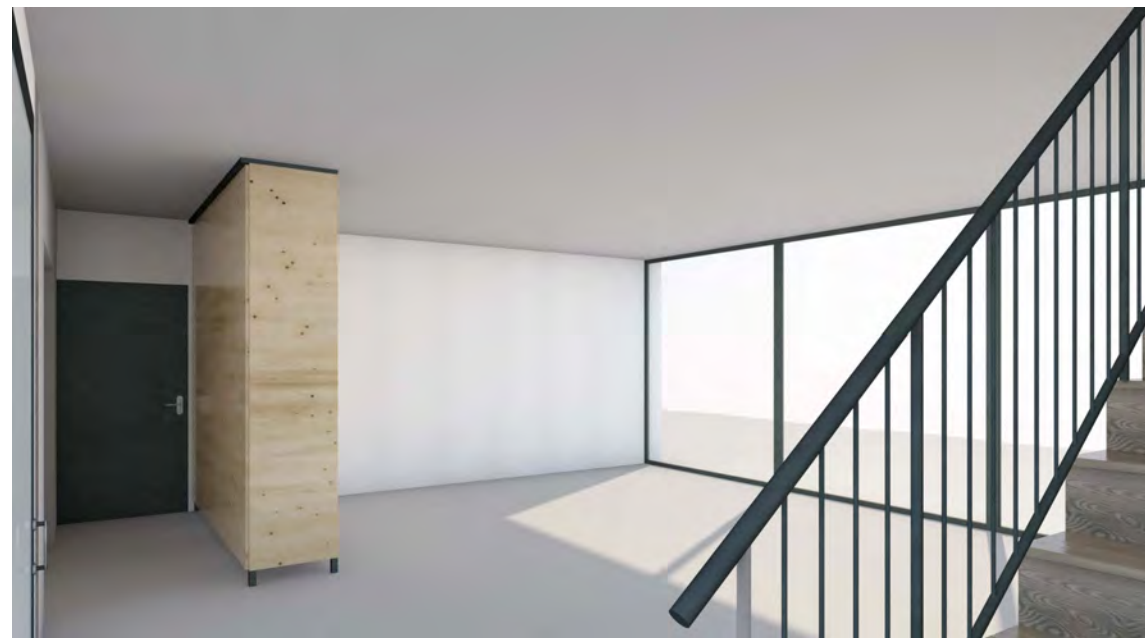




ATELIER HOUSE WITHOUT THE WALLS OF A FACADE



1. WORKING AREA



2. KITCHEN AND DINNING ROOM



3. CORRIDOR SECOND FLOOR



4. BEDROOM

