

AN URBAN NEIGHBOURHOOD  
Kira van Woudenberg, 20-917-928  
Atelier Itten  
Entwurf und Konstruktion II  
Professur Deplazes, FS 2021



# Aufsicht

Masstab 1/500



The design of the quarter is based on the dialectic approach between a front directed to the public and a back directed towards a private space.

Four wide public streets from each side lead to the main public yard. Two tangential and two central. This encloses the place and invites people to stay.

The studio houses form a clear edge towards the city and the public yard.

Because some studio houses are longer than the others a sequence of smaller private courtyards is formed.

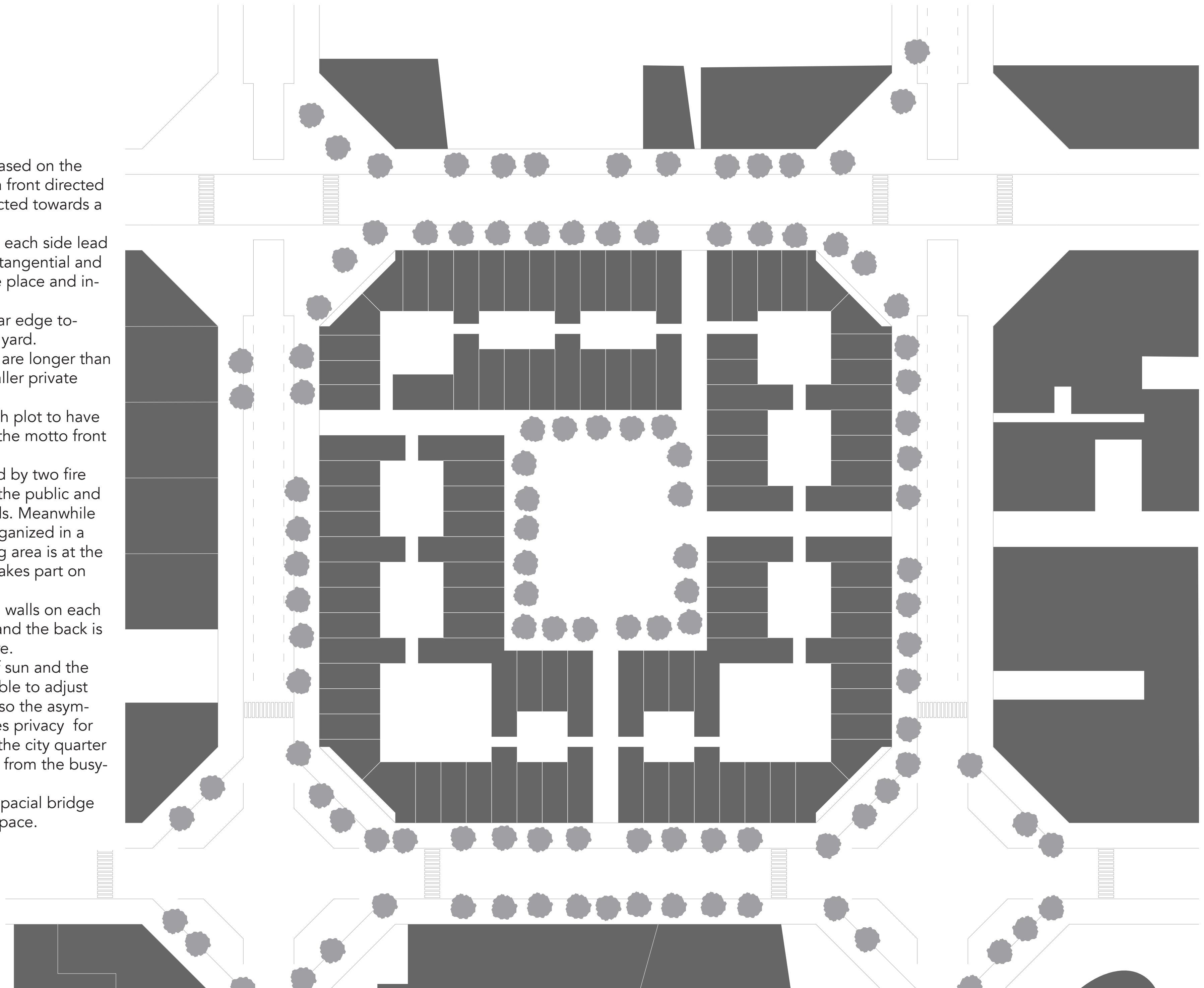
These courtyards enable each plot to have similar quality and underline the motto front and back.

Each studio house is enclosed by two fire walls. Working is directed to the public and living to the private courtyards. Meanwhile the spacial arrangement is organized in a way that the intimate sleeping area is at the uppermost and social living takes part on the ground floor.

In contrast to the massive fire walls on each side, the facade to the front and the back is a filigree greenhouse structure.

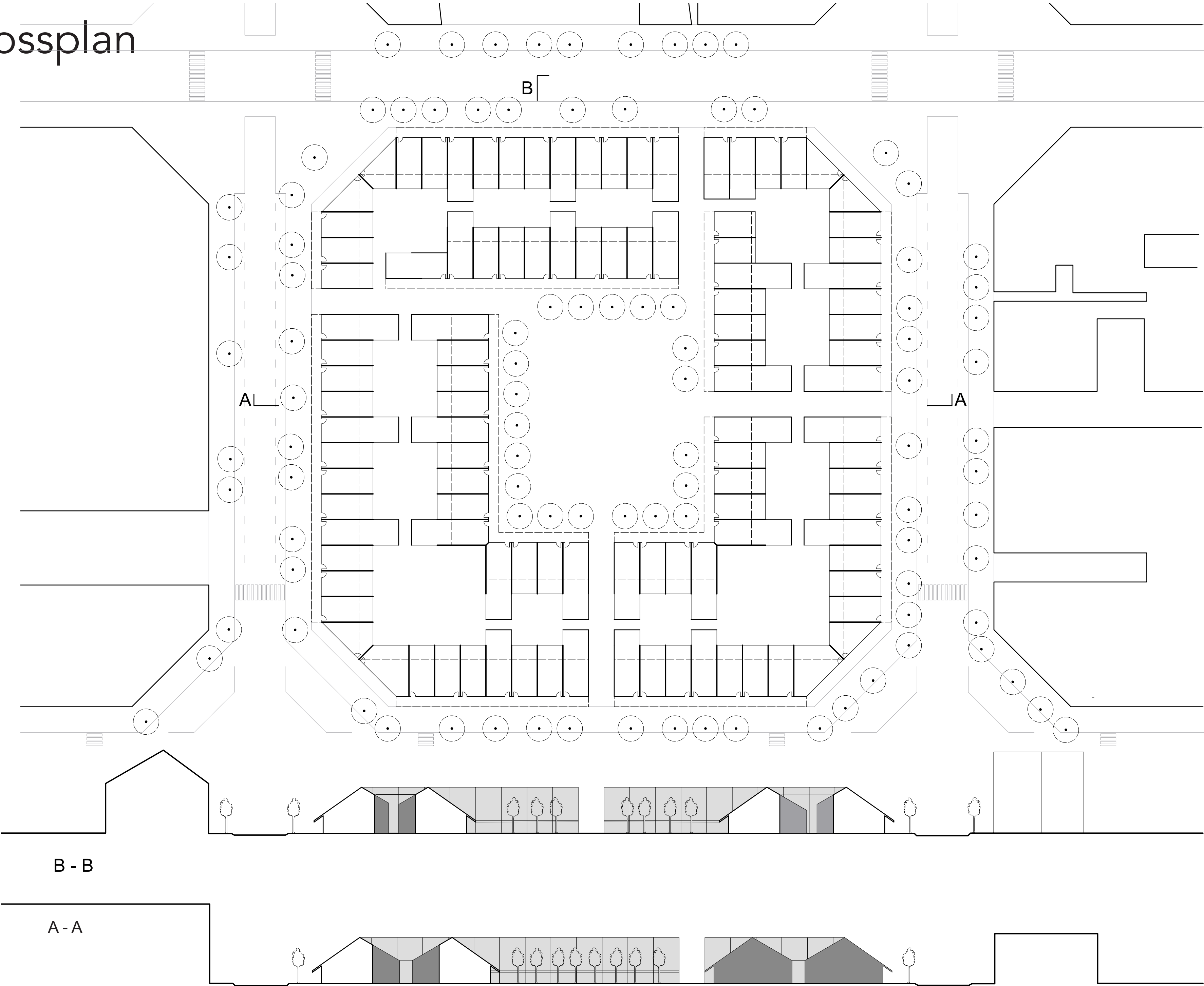
Depending on the amount of sun and the privacy one desires it is possible to adjust the sun blinds on the roof. Also the asymmetric form of the roof creates privacy for each individual house within the city quarter and it is possible to withdraw from the busyness of the city.

Hence the studio house is a spacial bridge between public and private space.



# Stadtgeschossplan

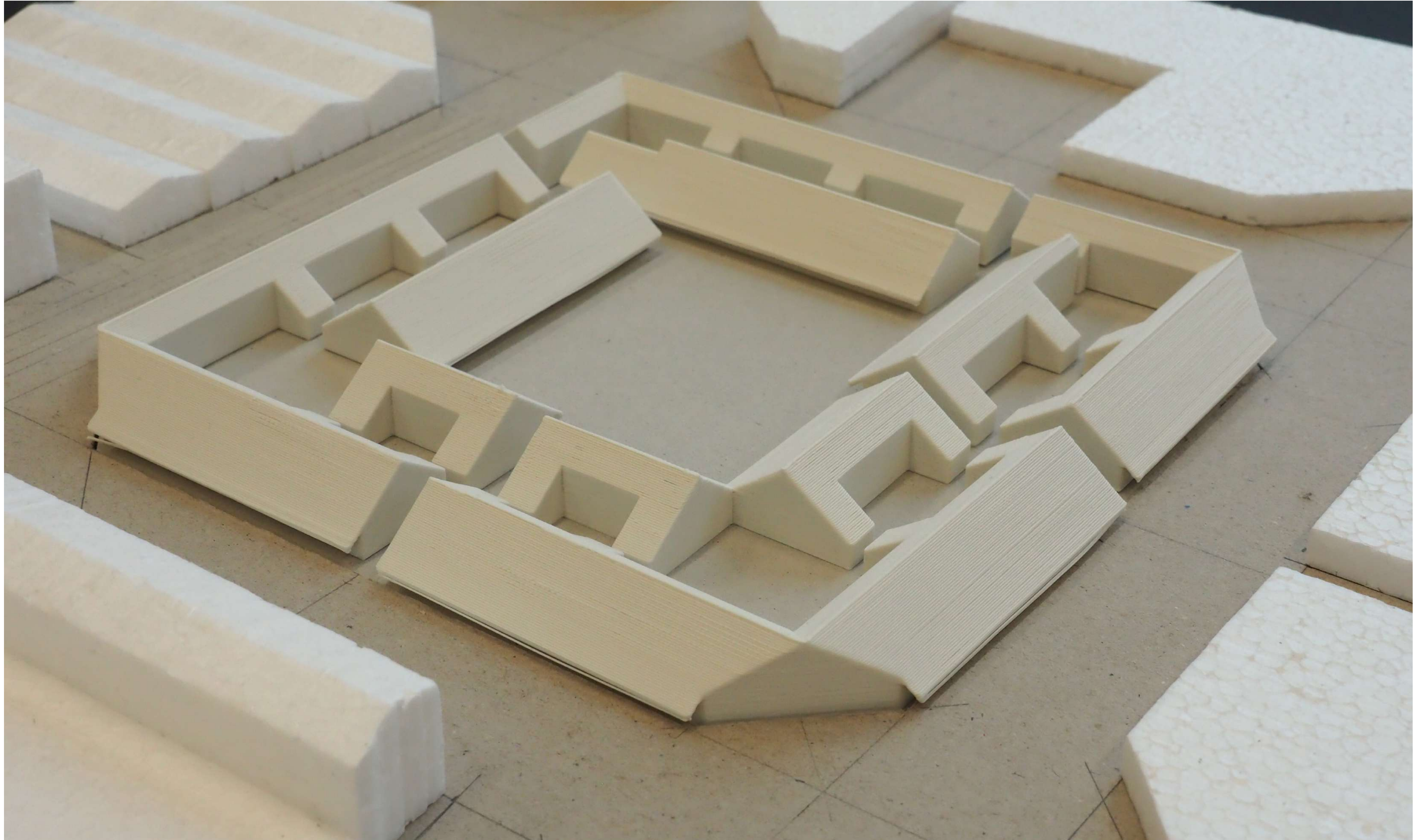
Masstab 1/500



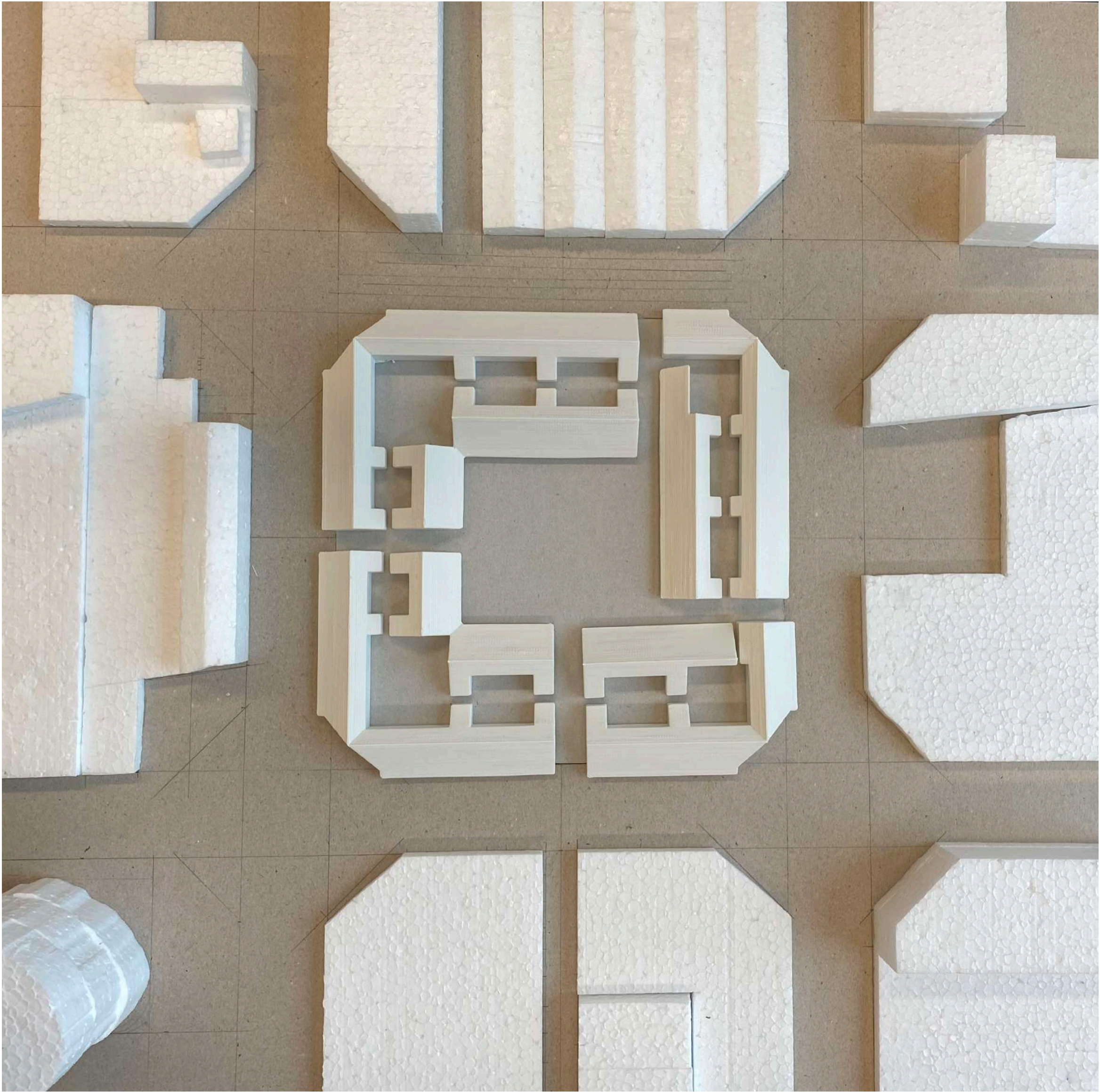


# Quartiermodell

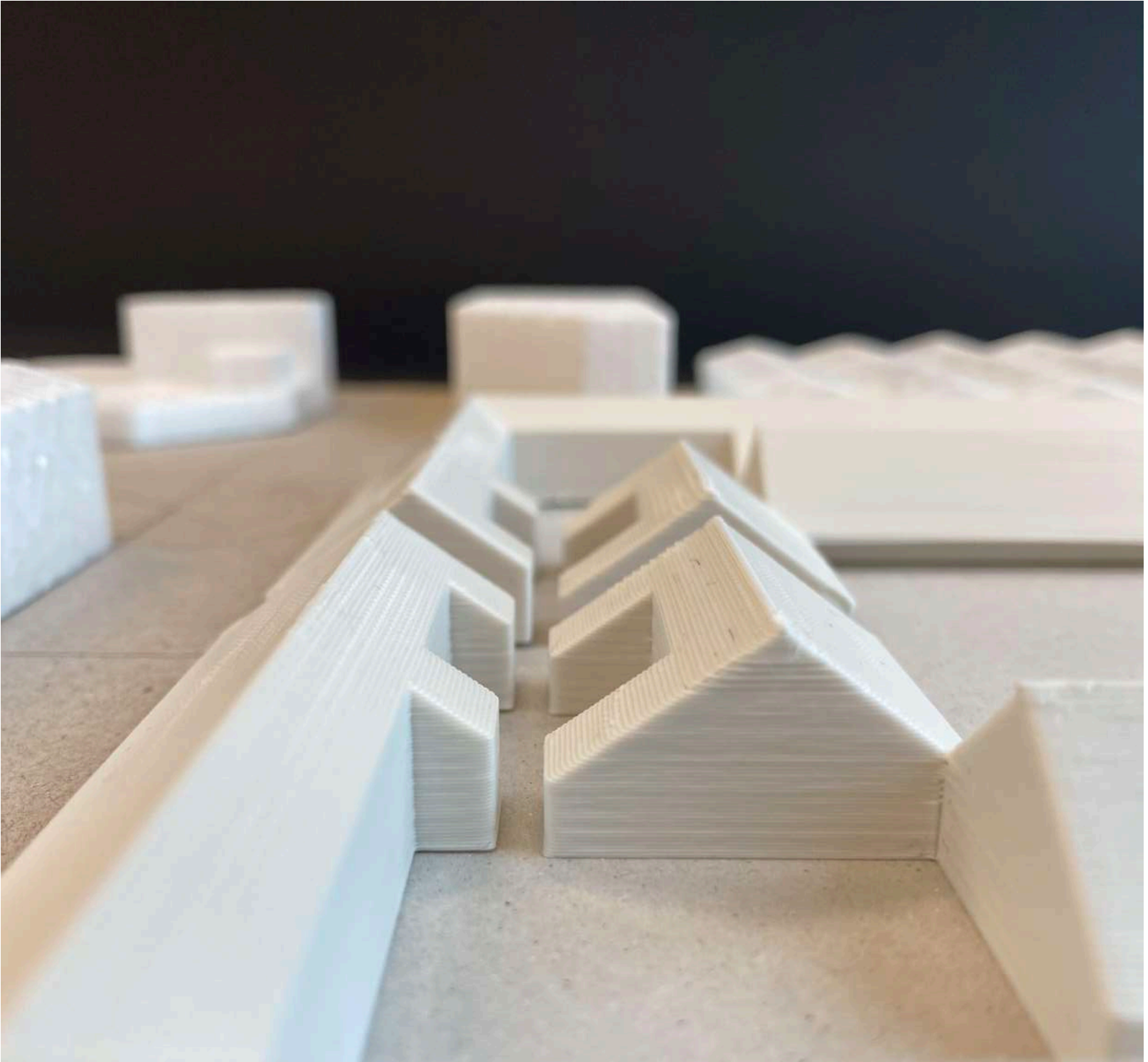
Massstab 1/500





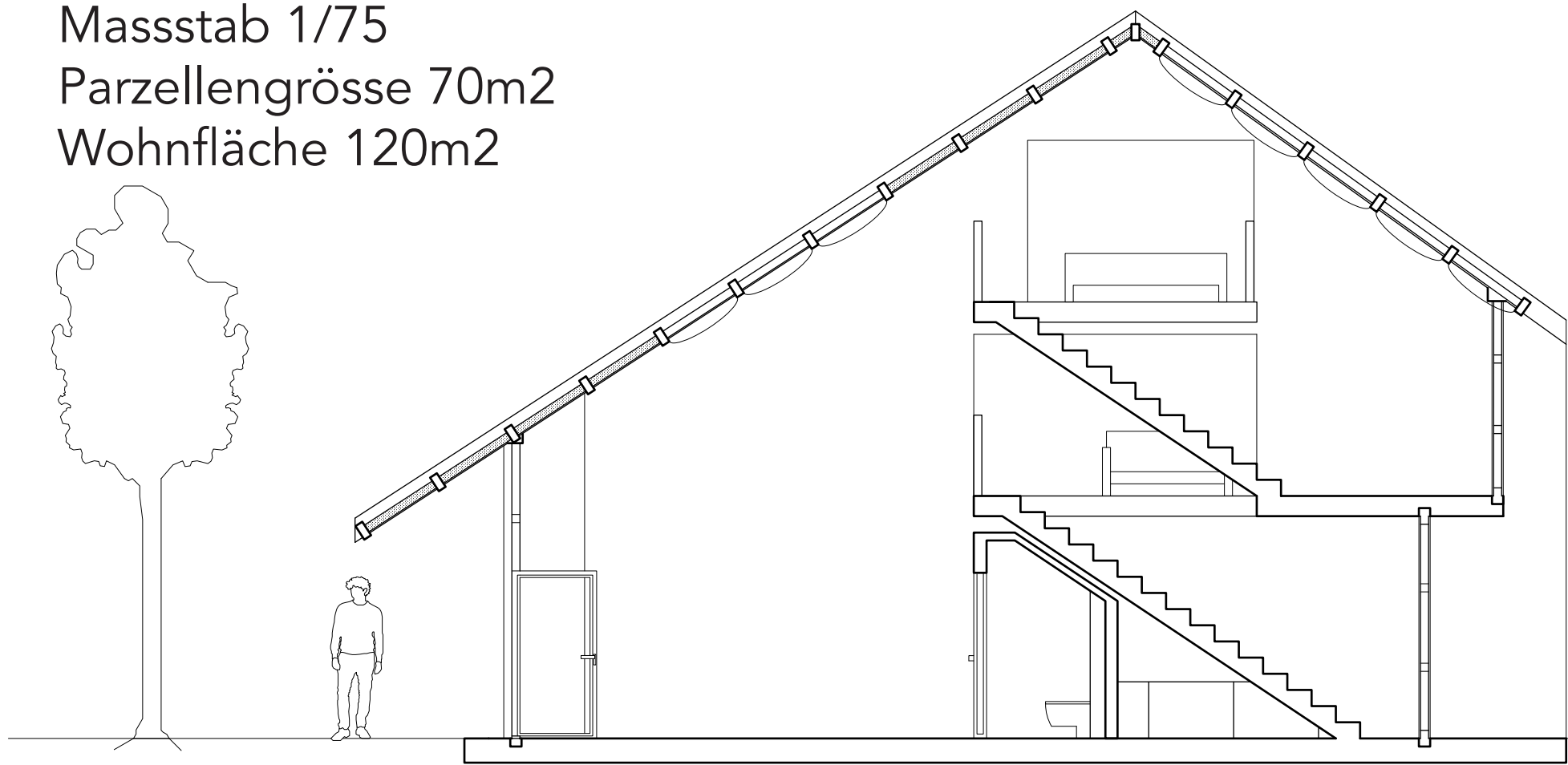




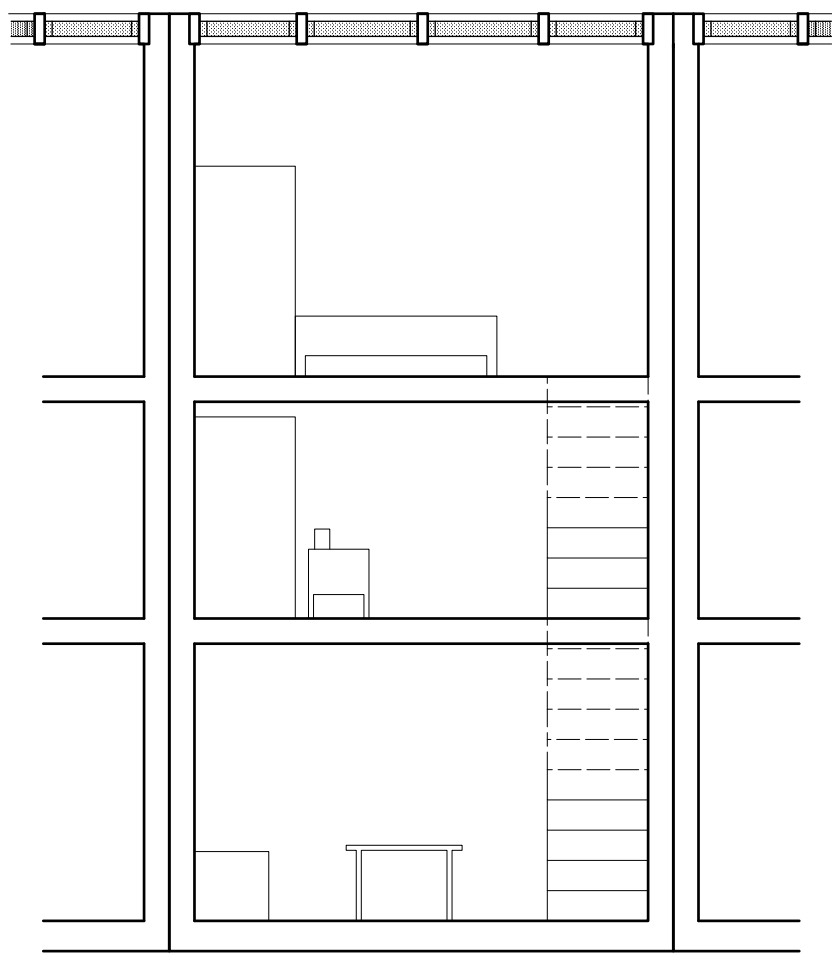
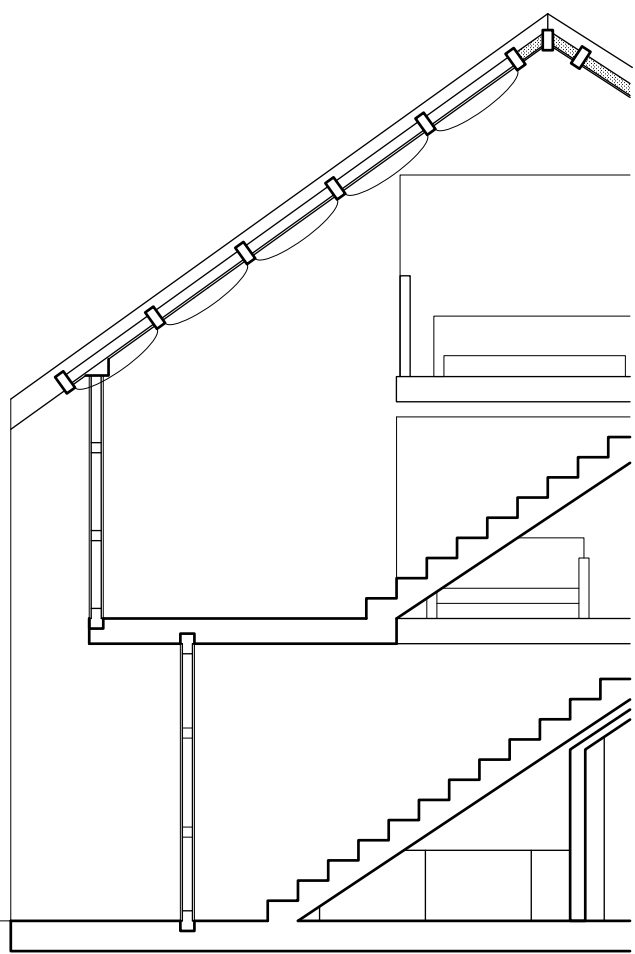


# Atelierhaus

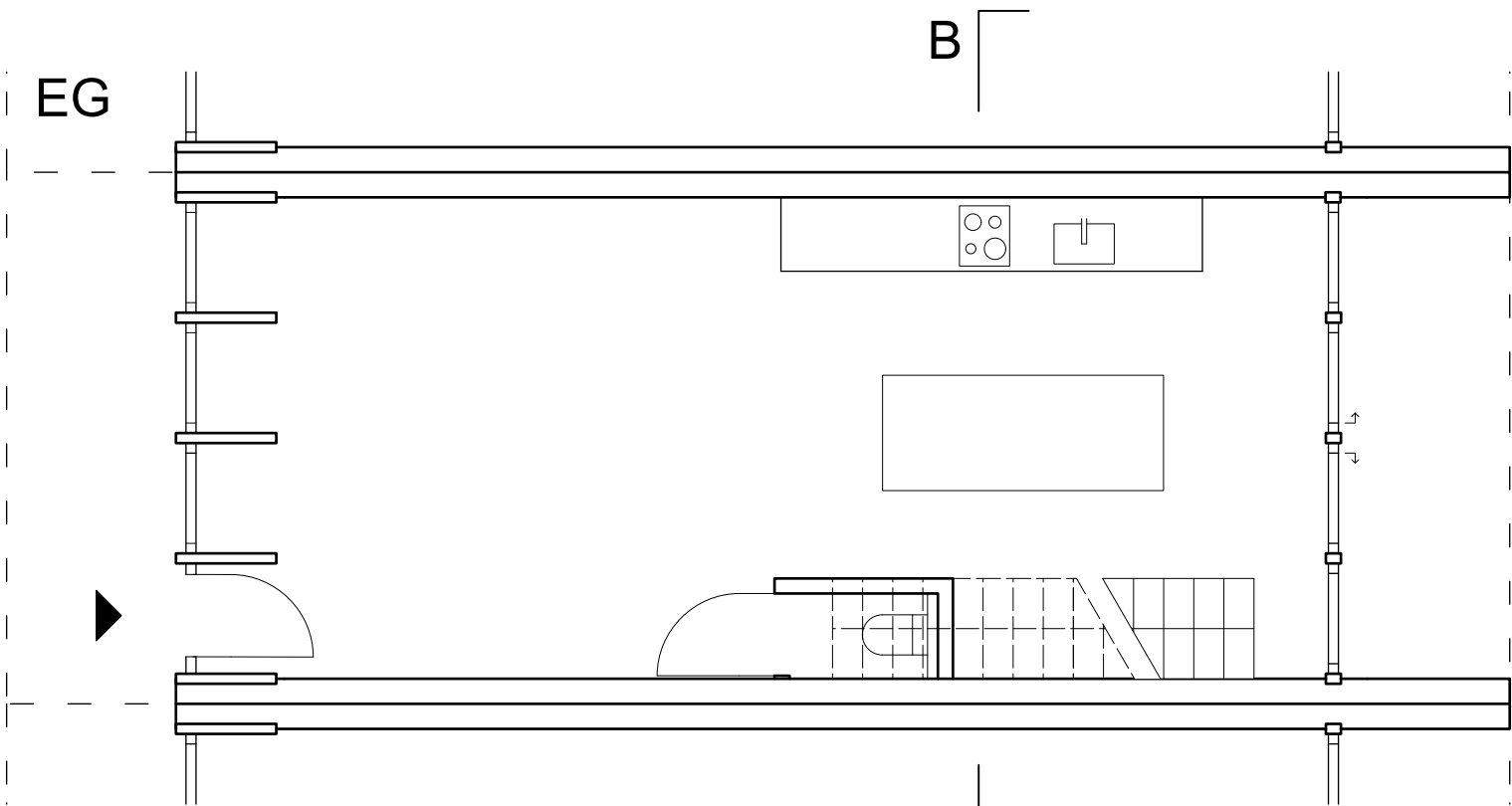
Masstab 1/75  
Parzellengrösse 70m2  
Wohnfläche 120m2



A - A

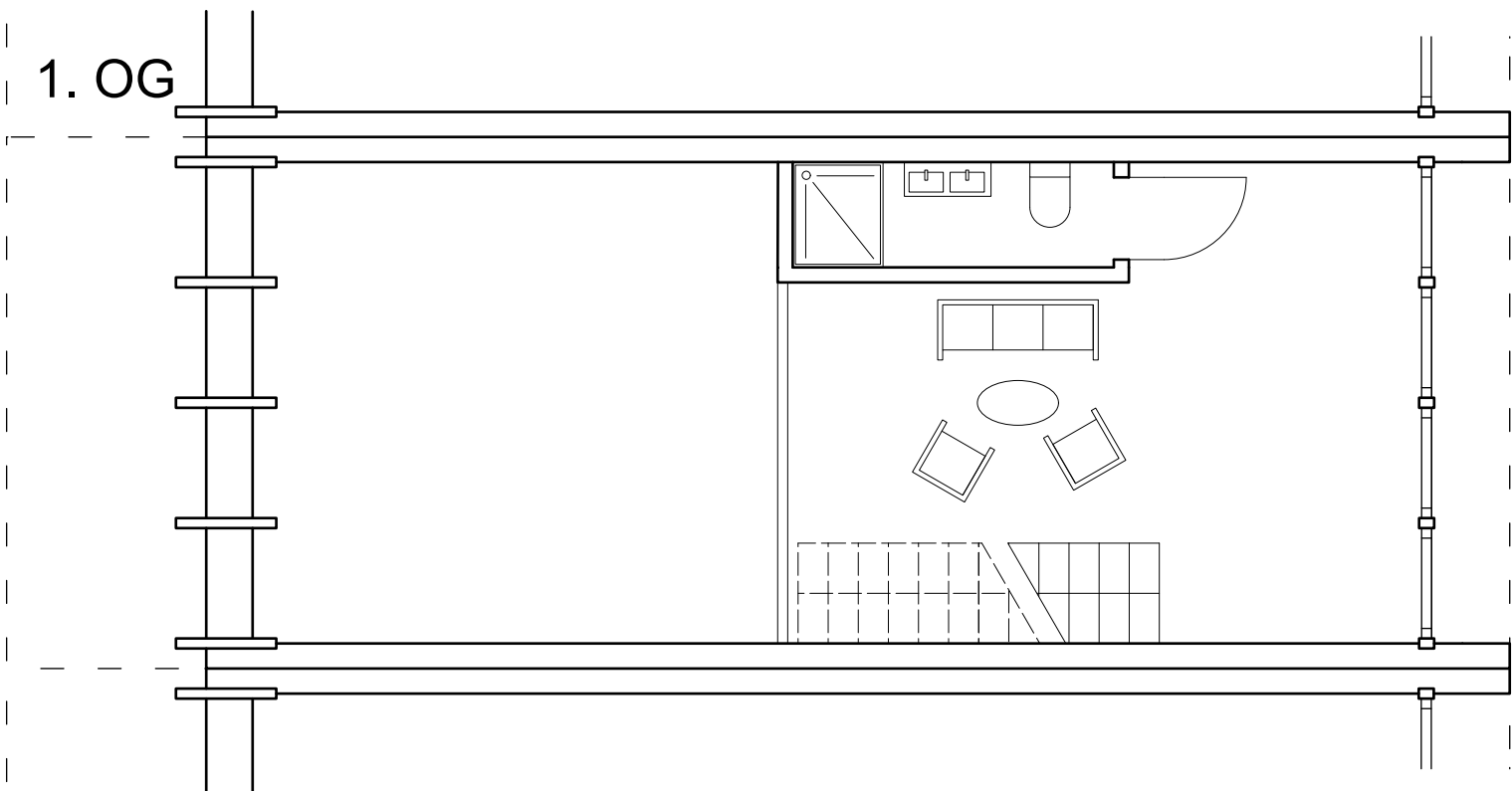


B - B

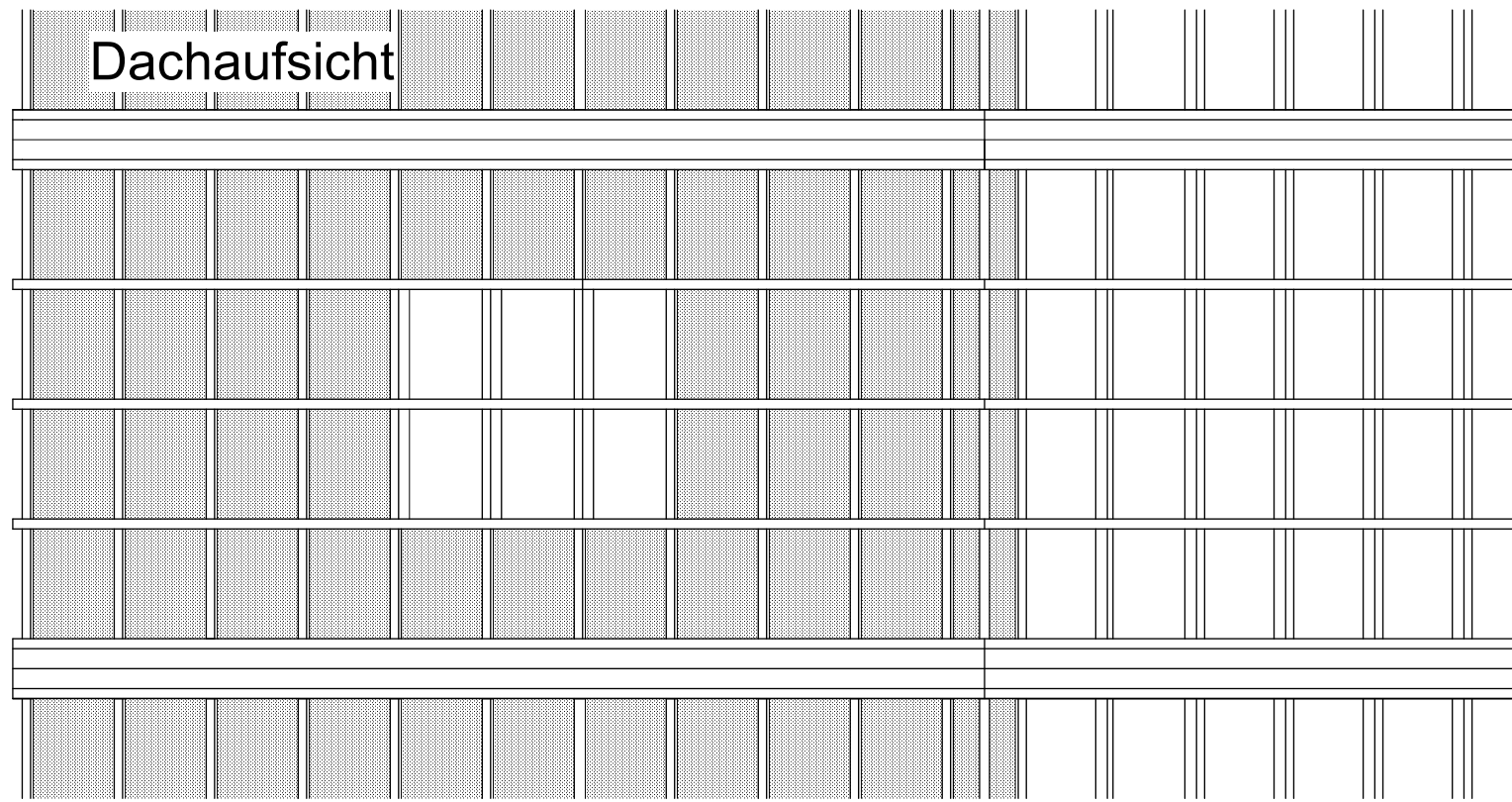


A

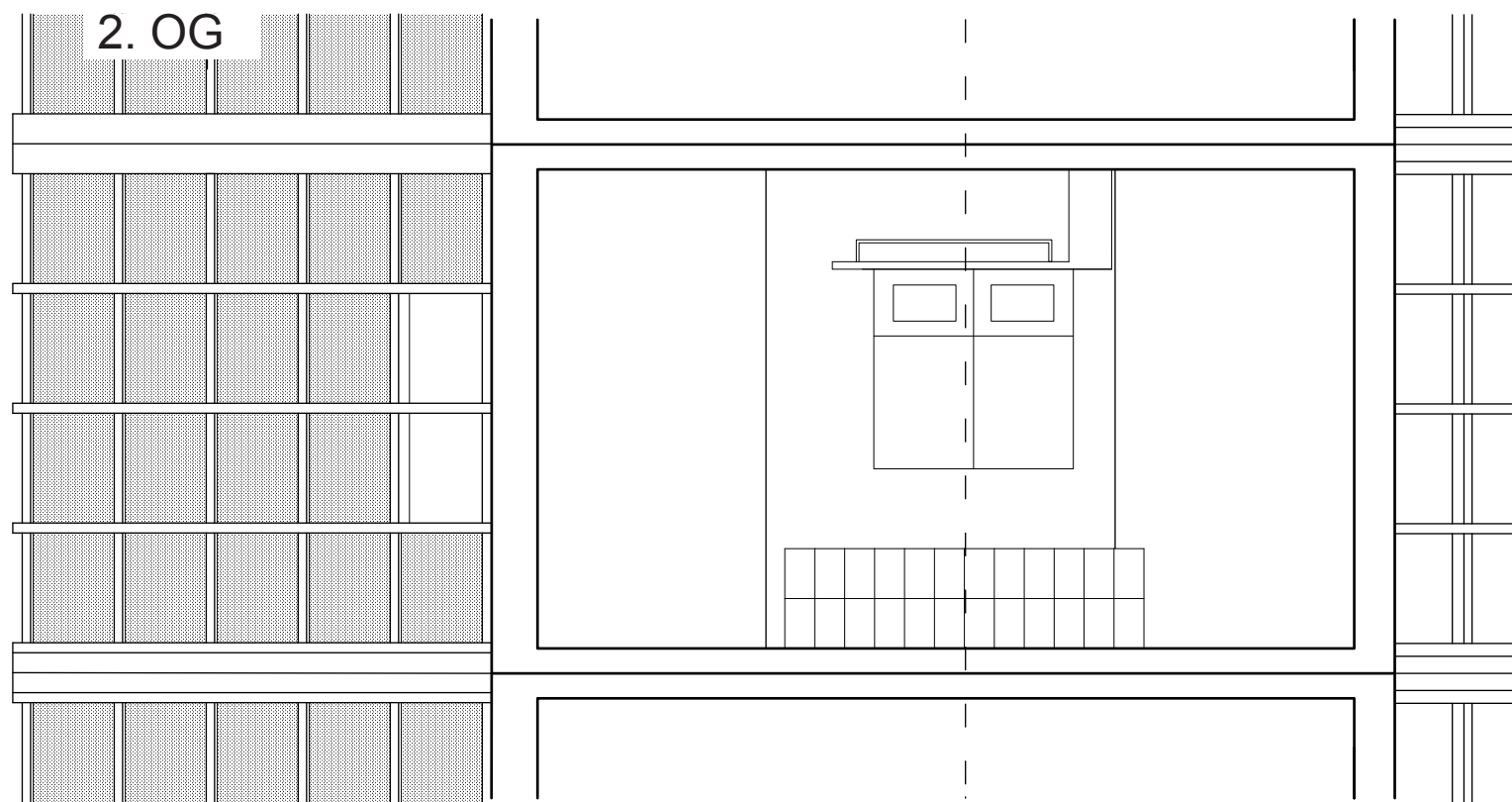
A



1. OG



Dachaufsicht



2. OG



# Atelierhausmodell

Massstab 1/50

Parzellengrösse 70m<sup>2</sup>

Wohnfläche 120m<sup>2</sup>



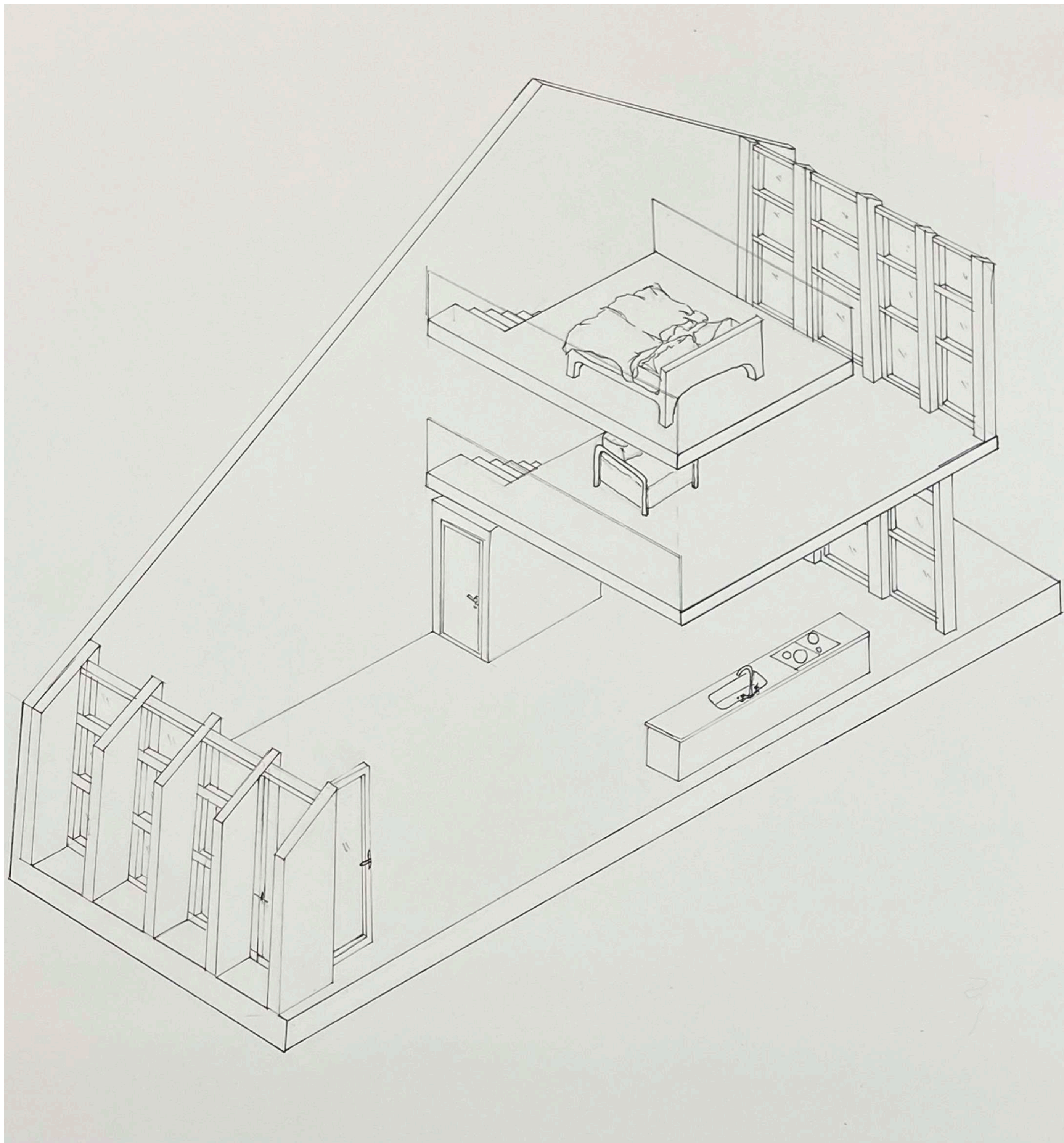
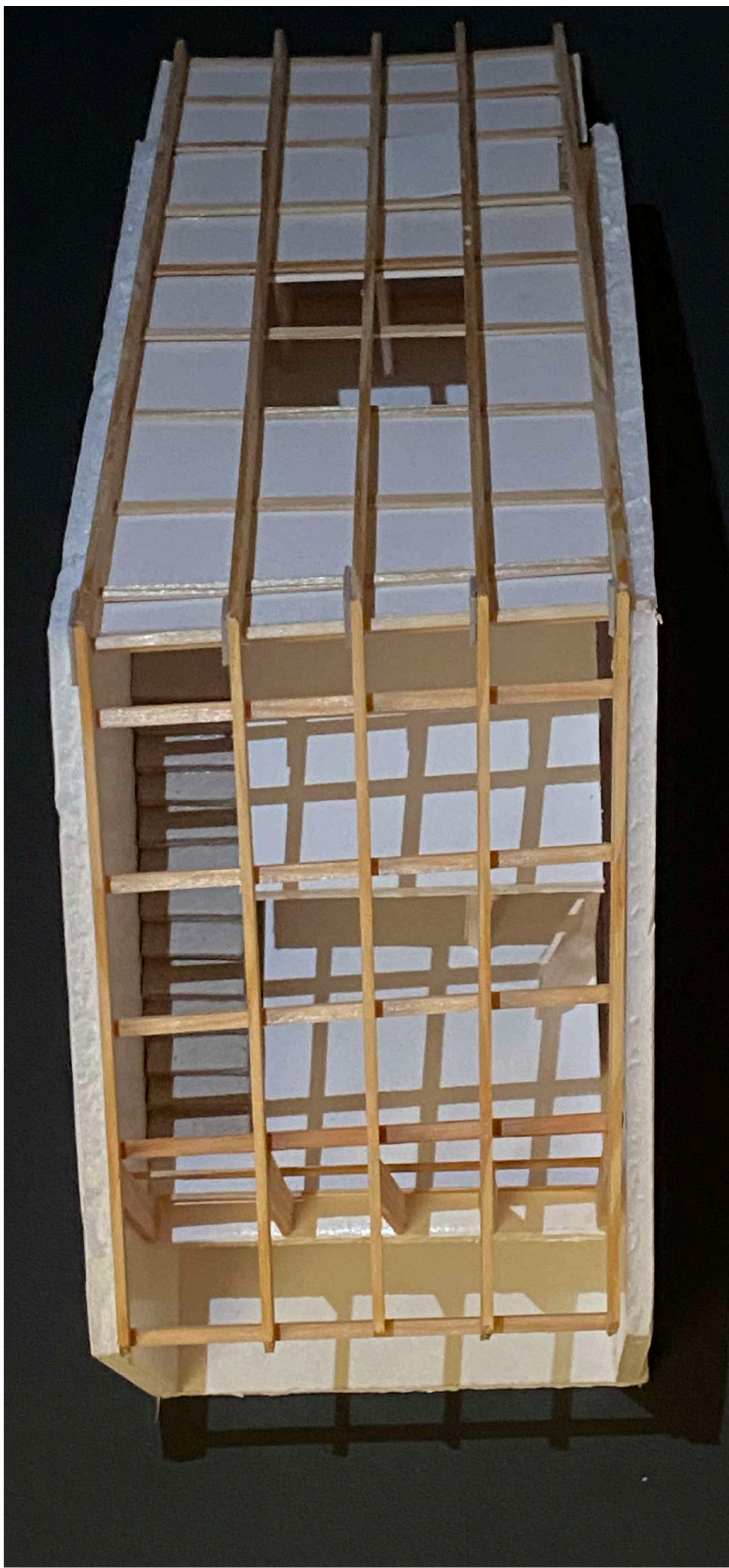














# BUK Übung Fenster

Massstab 1/10

Axonometrie

Innenraumperspektive

