

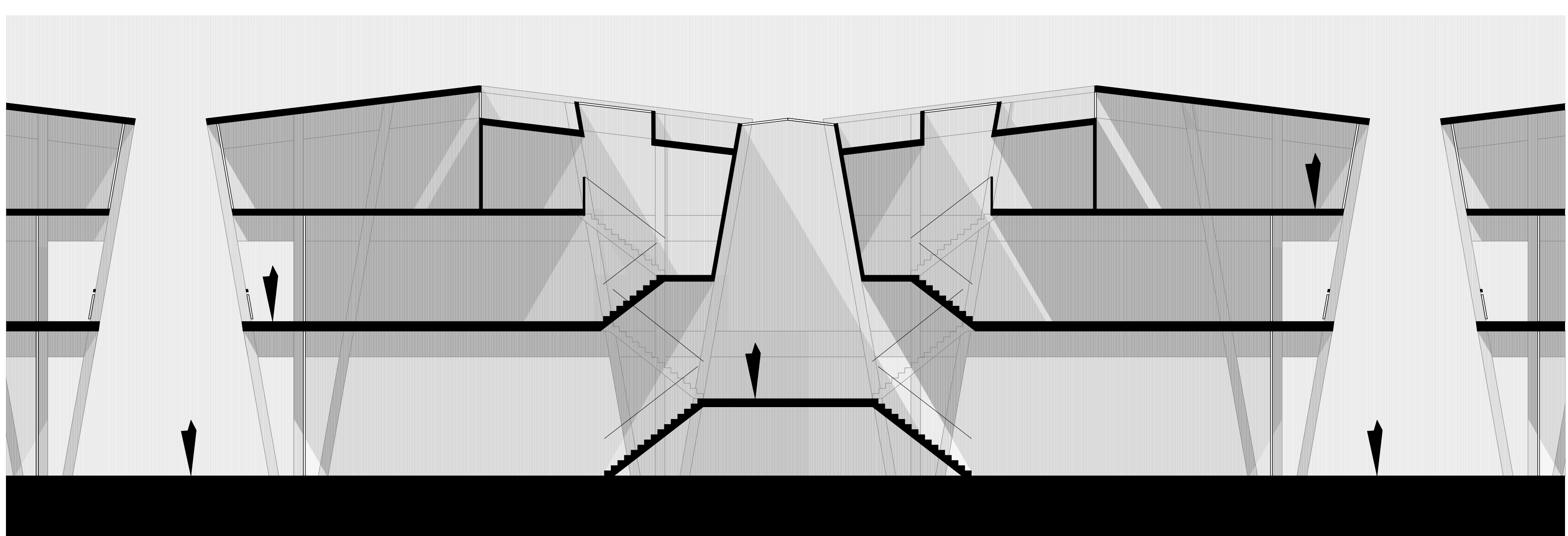
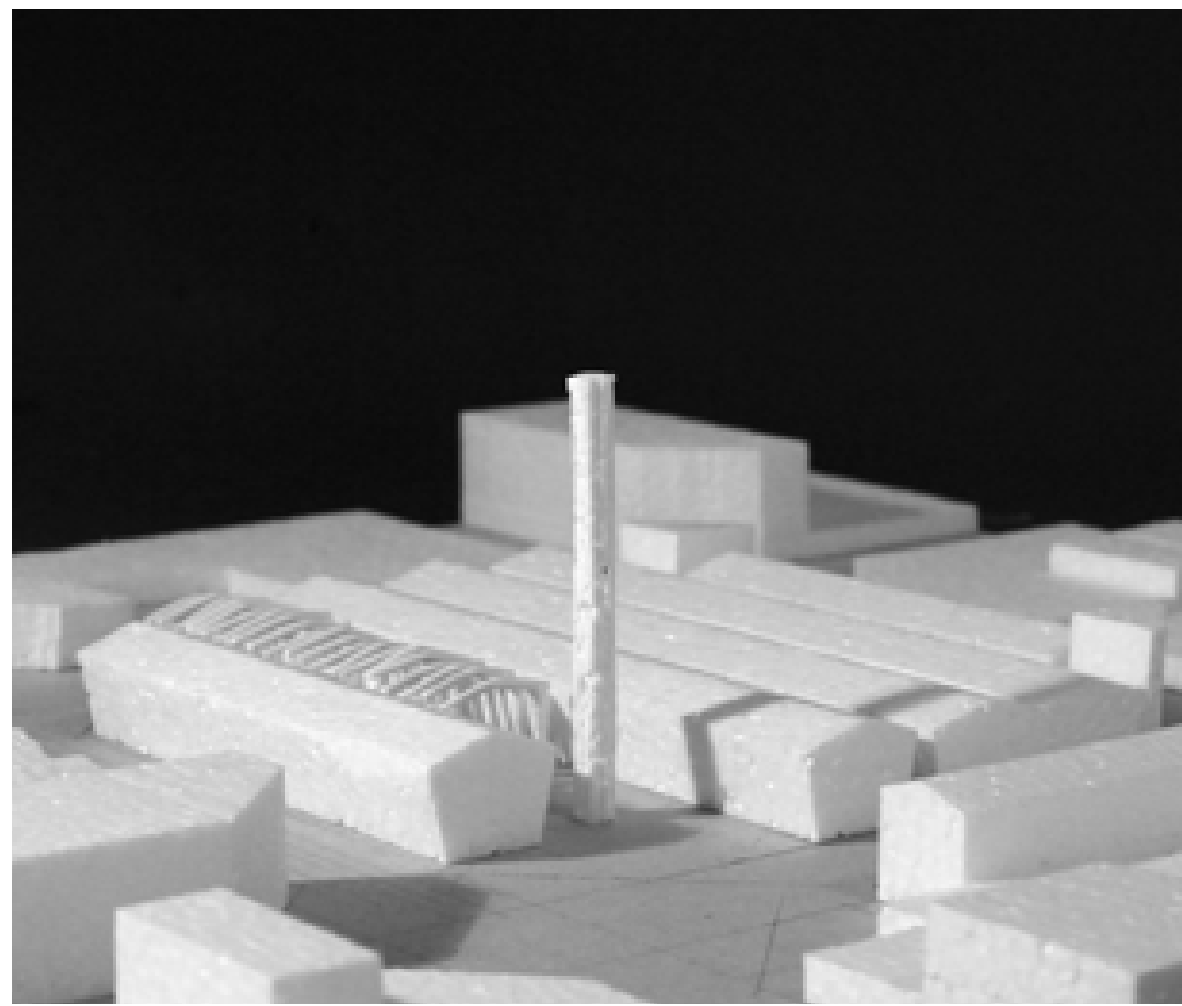
SITUATION 1:500

The surrounding area is characterized by large-scale industrial warehouses. In the same way, the city block 9 is restructured by six parallel halls. The volumes all have the same structure, but are elaborated in different ways. One is opened to the maximum, becoming a public space. The other volumes are enclosed. They house workspaces on the urban level and apartments on the upper floor. The existing buildings are all preserved. The chimney serves as a monument to the former industry.

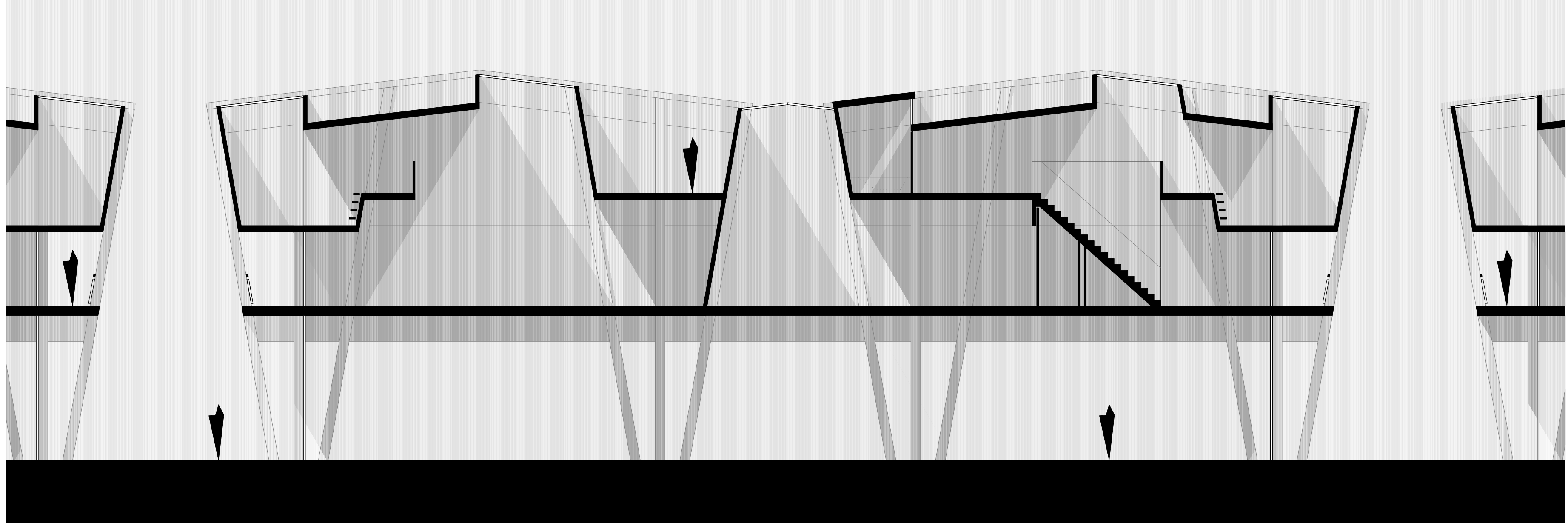
On the city level, the frames form long halls. Contrasting to these halls, the upper floor is divided into small-scale apartments.

A timber frame construction forms the supporting structure. The alternating planking of the frames makes the construction spatially readable.

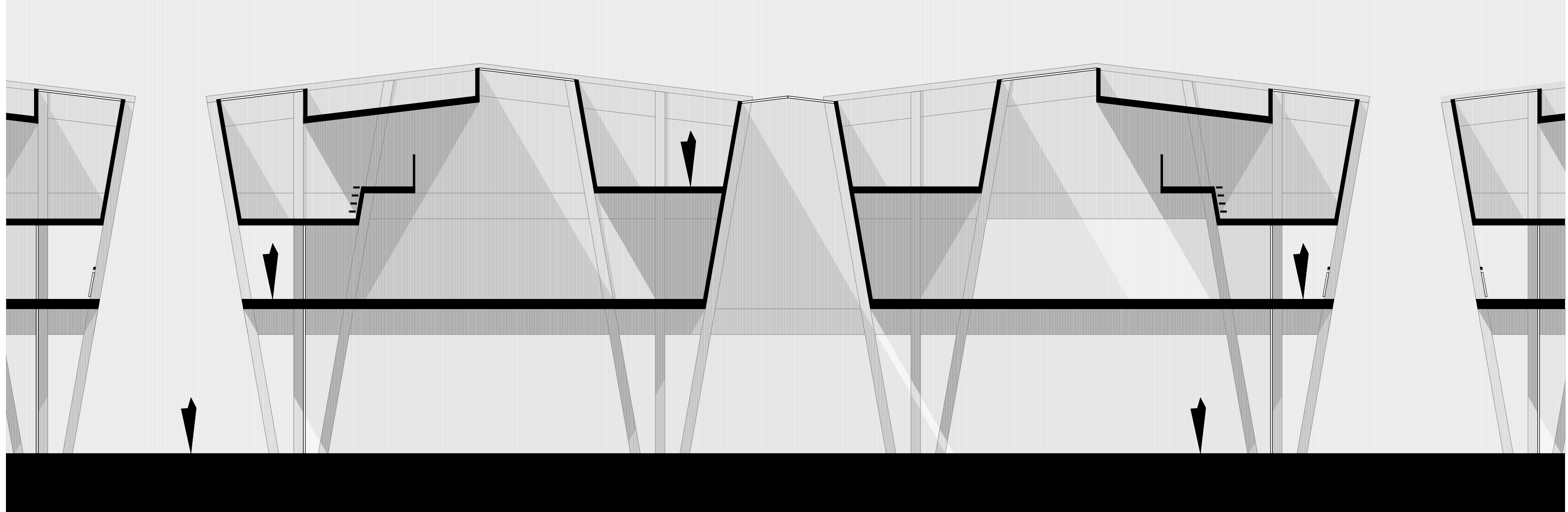
The apartments are addressed via an access balcony. Each unit consists of a generous living space, which is opened against the two alley. Above it hang narrow chambers. In contrast to the lower level, they are closed off from the alley and are lit via the roof.



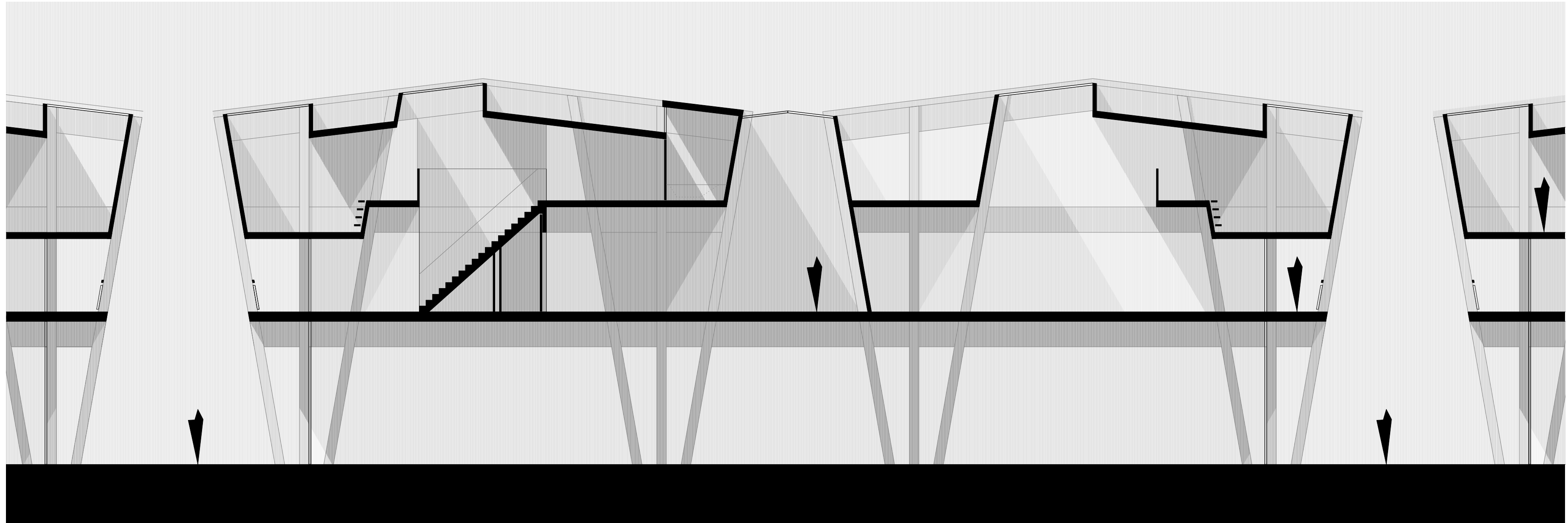
SECTION A 1:100



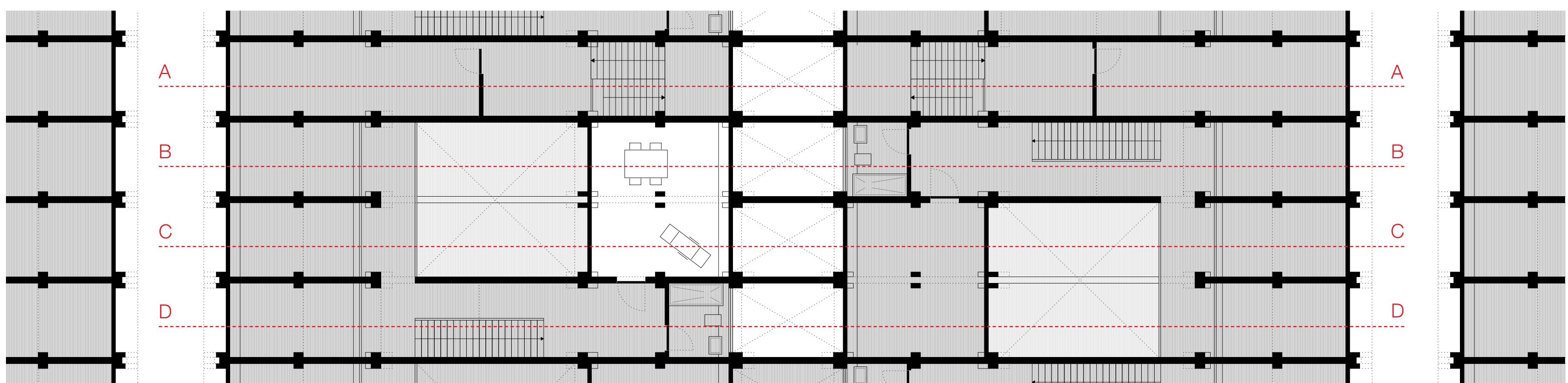
SECTION B 1:100



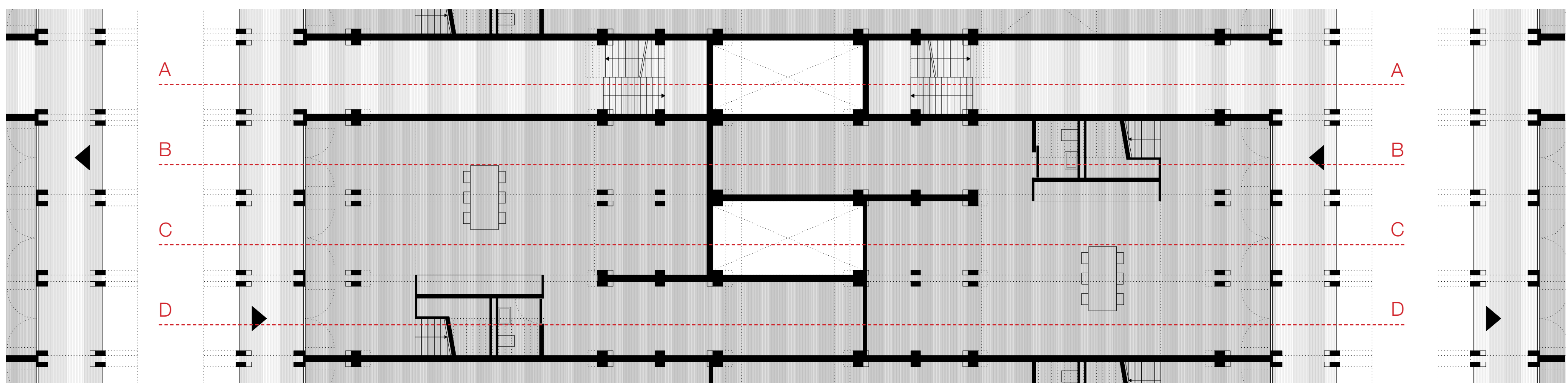
SECTION C 1:100



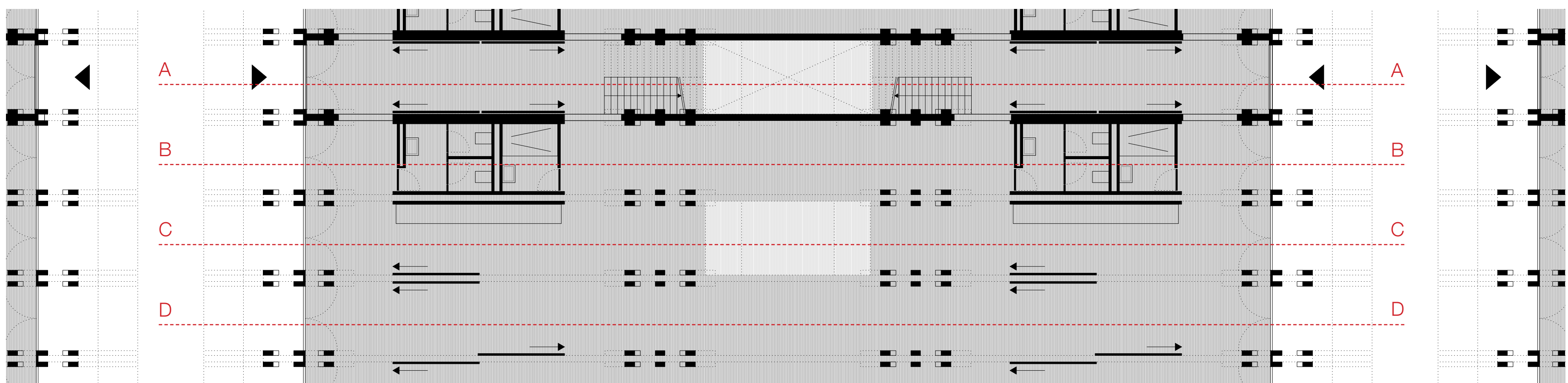
SECTION D 1:100



TOP FLOOR 1:100

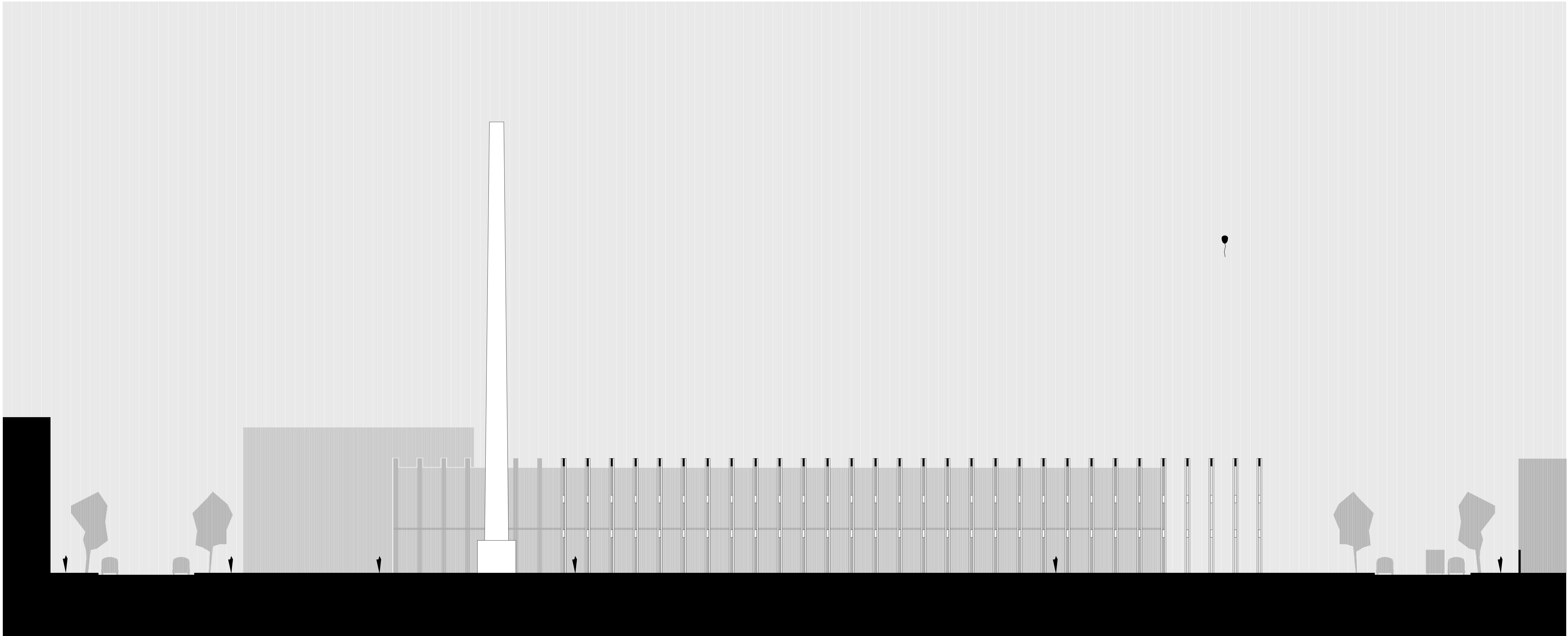


UPPER FLOOR 1:100

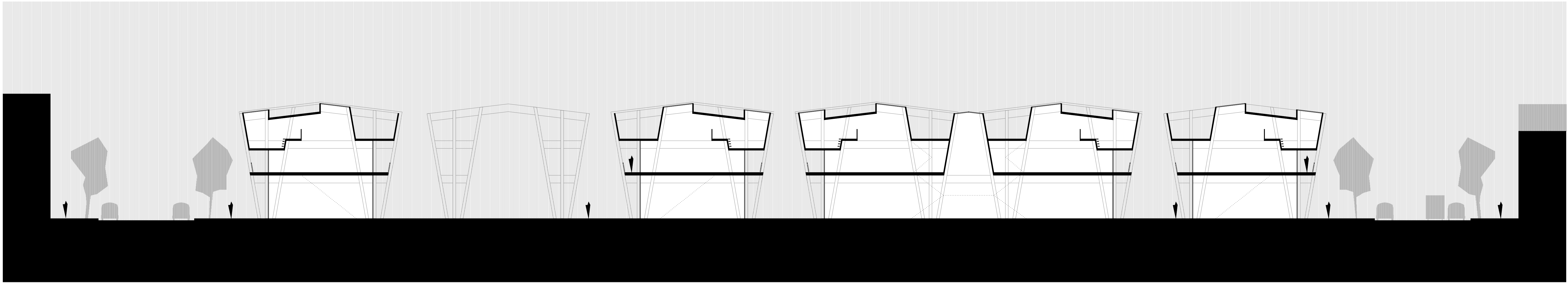


GROUND FLOOR 1:100

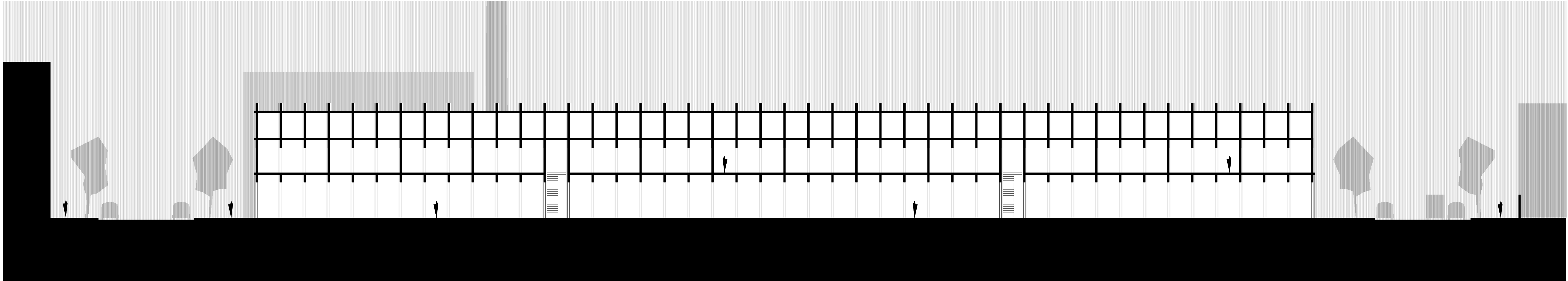




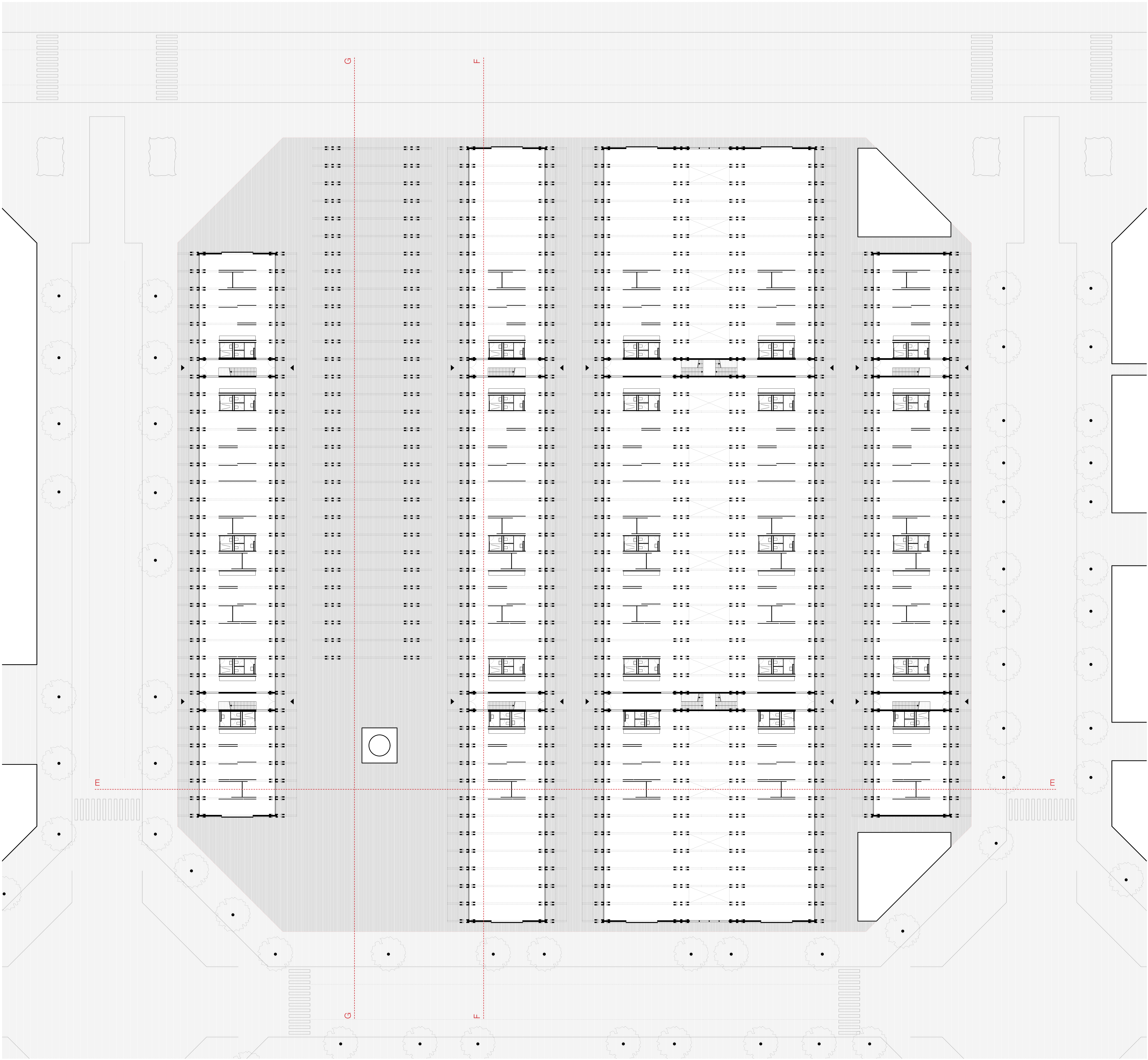
SECTION G 1:200



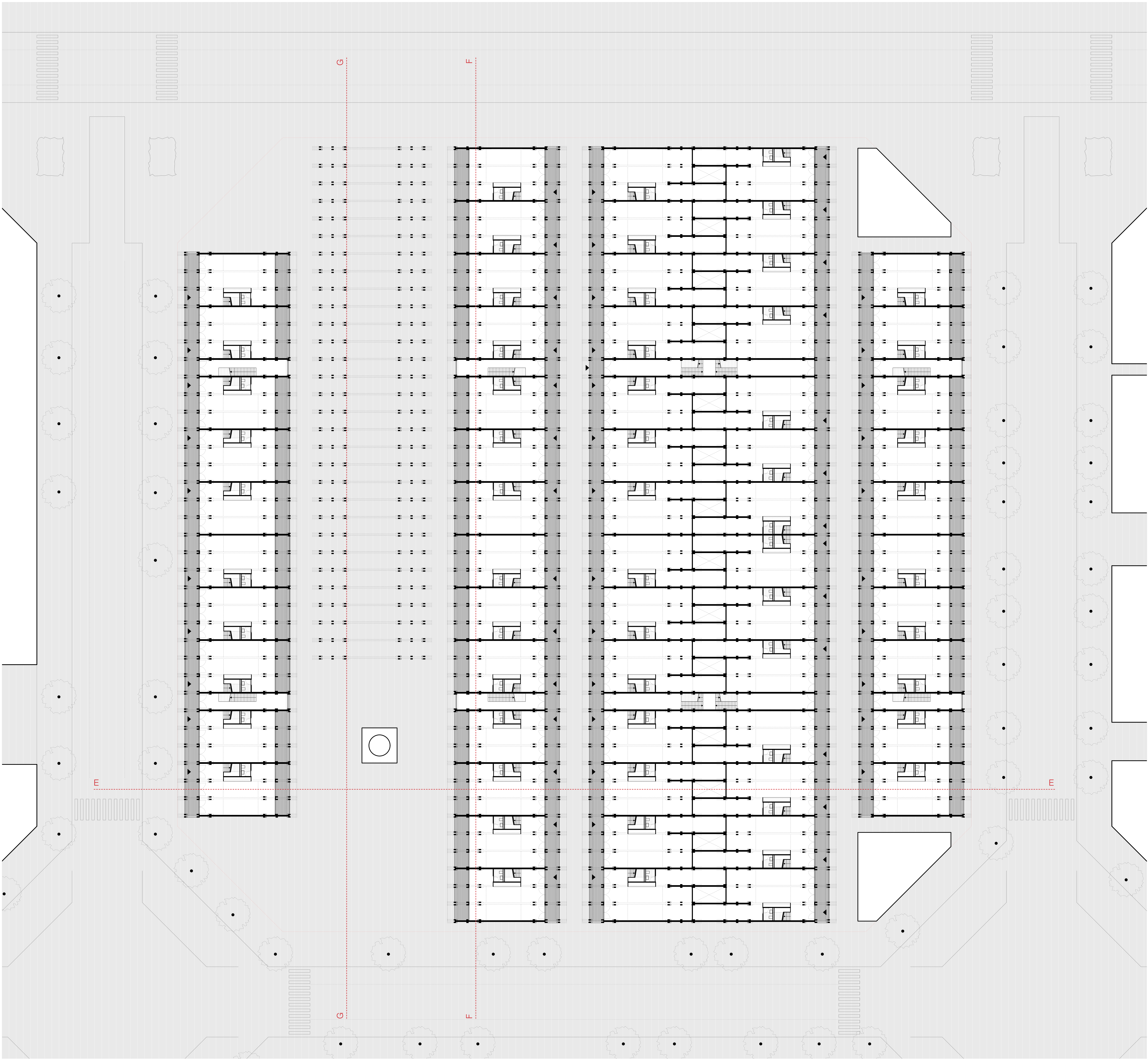
SECTION E 1:200



SECTION F 1:200



GROUND FLOOR 1:200



UPPER FLOOR 1:200