

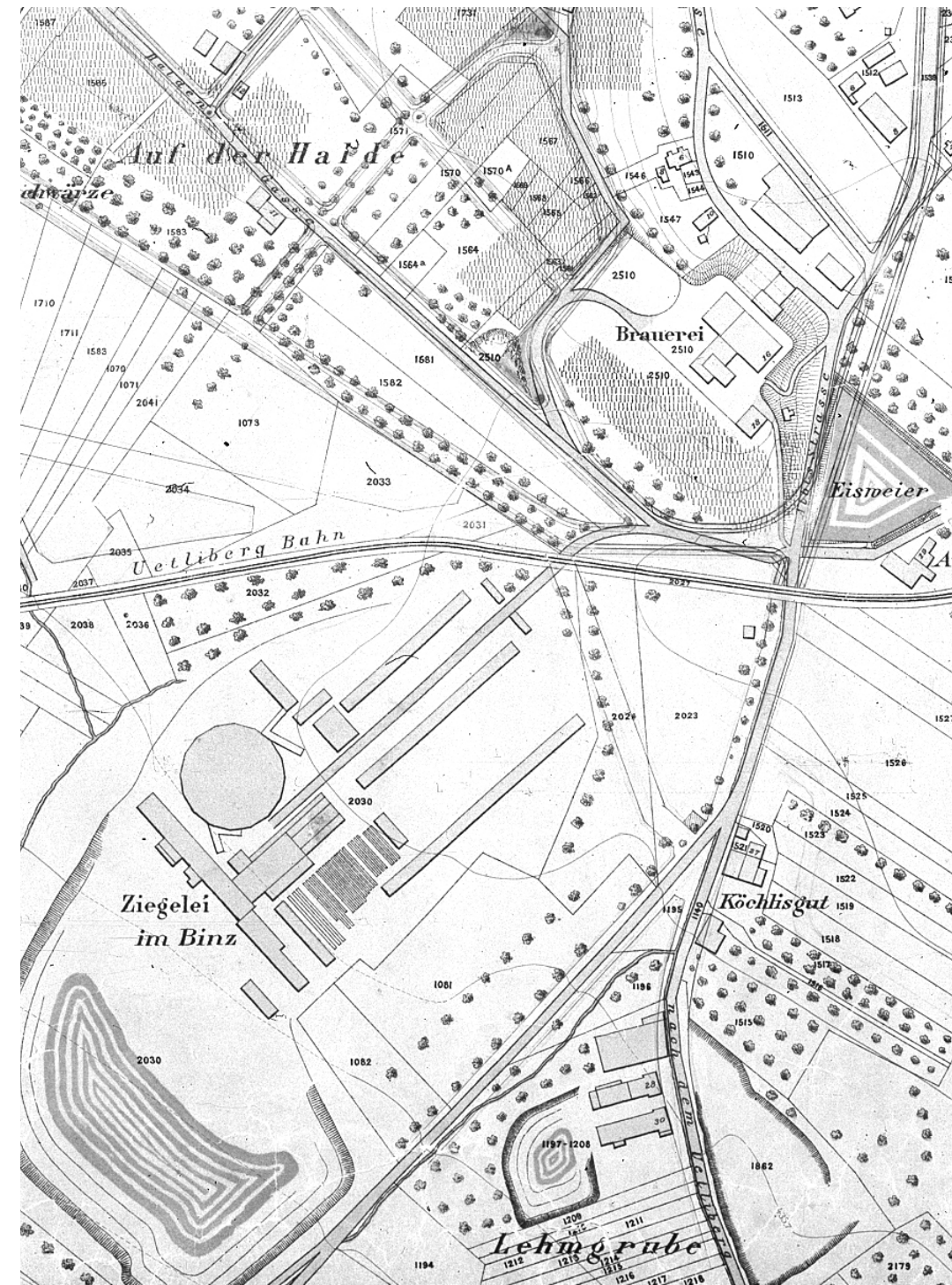
## HOW TO MOVE A STONE

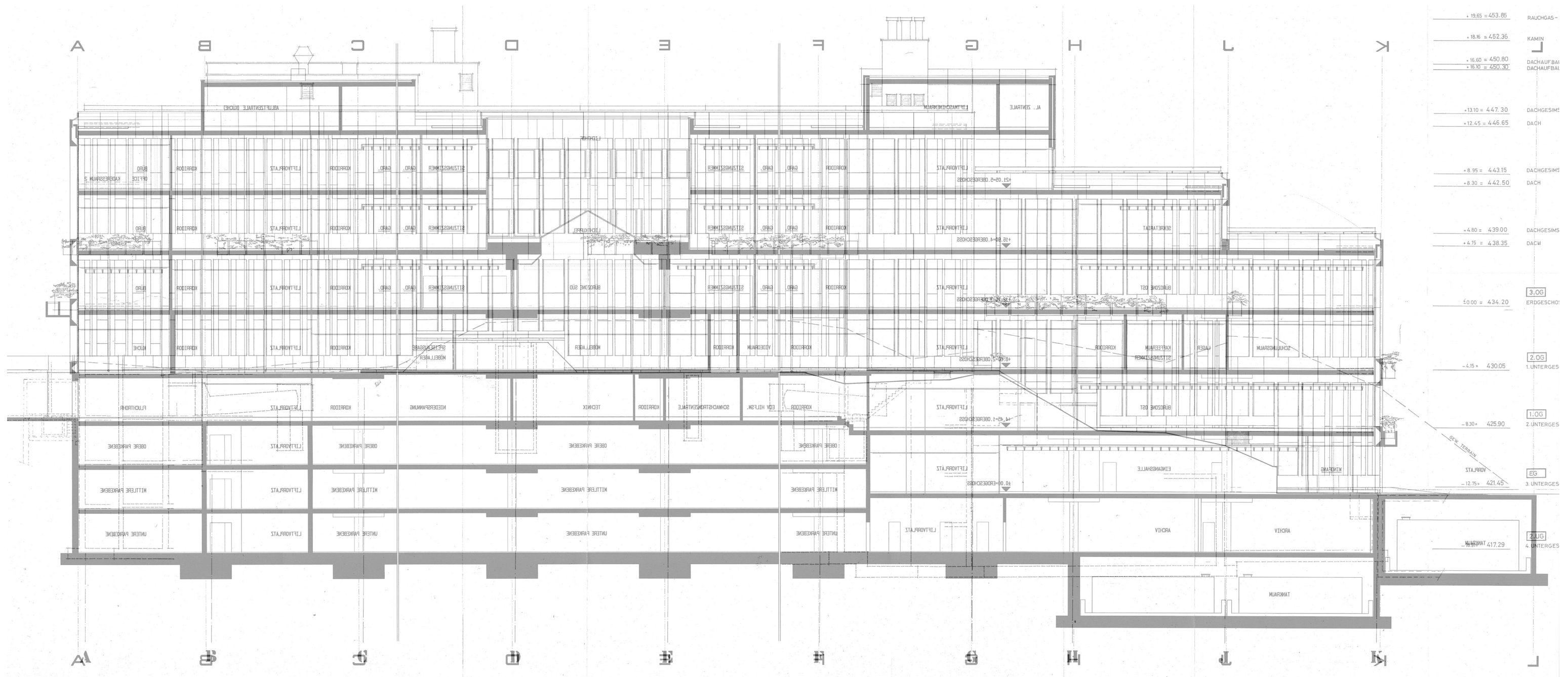


RE

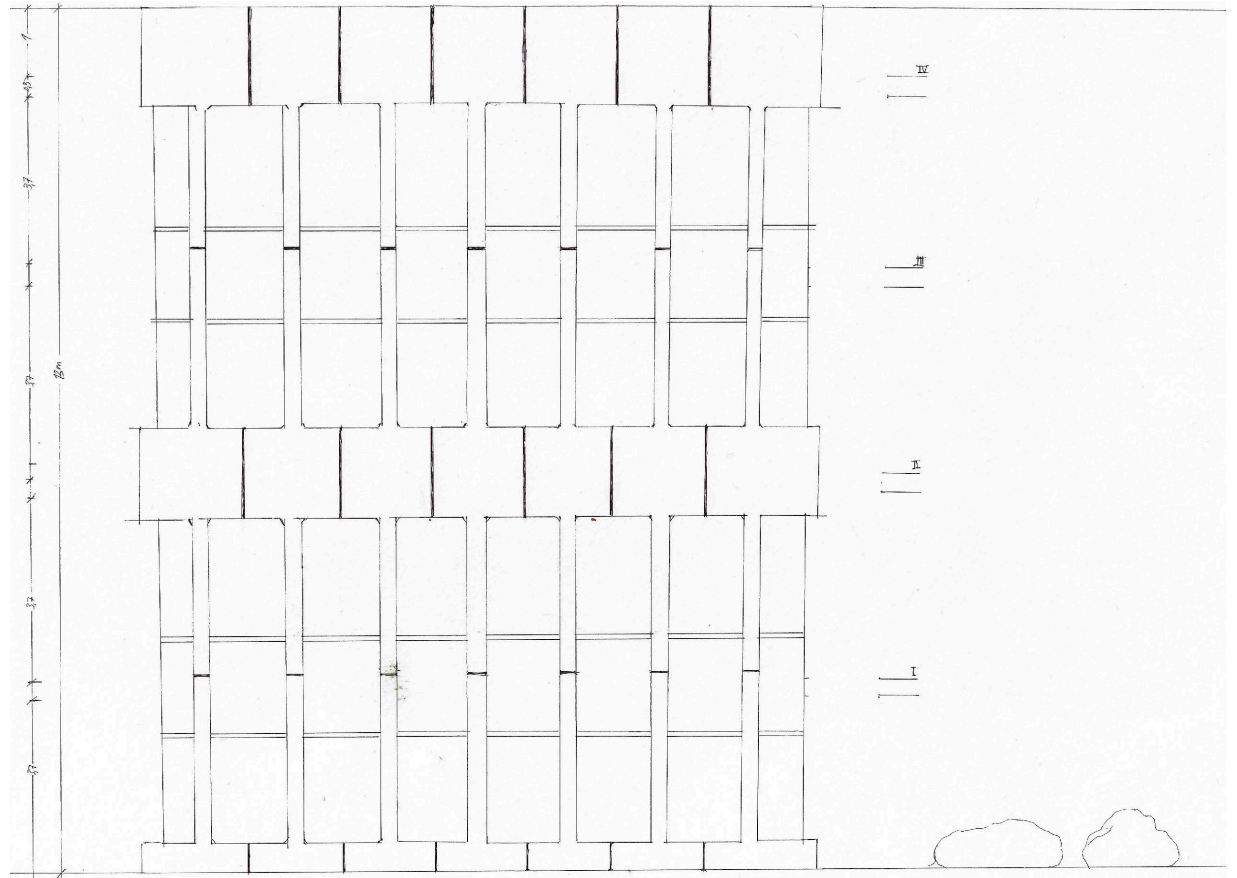
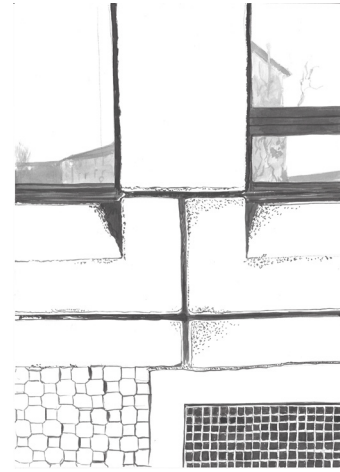
frame



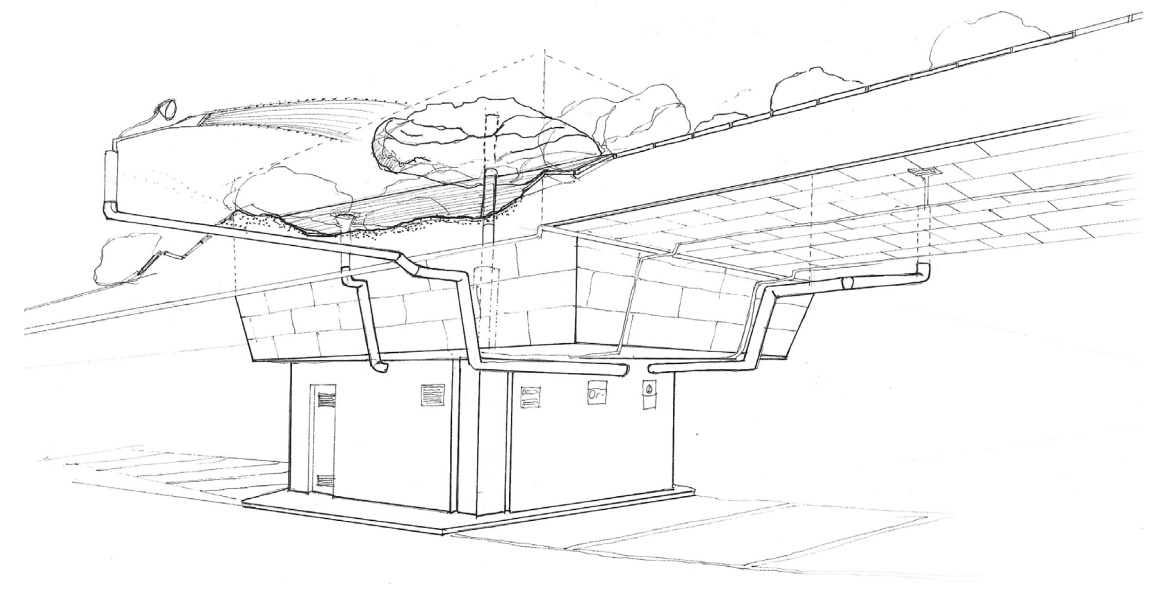




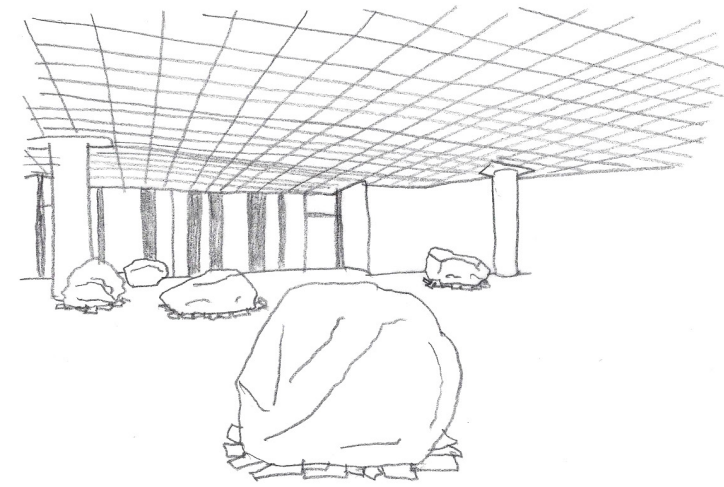
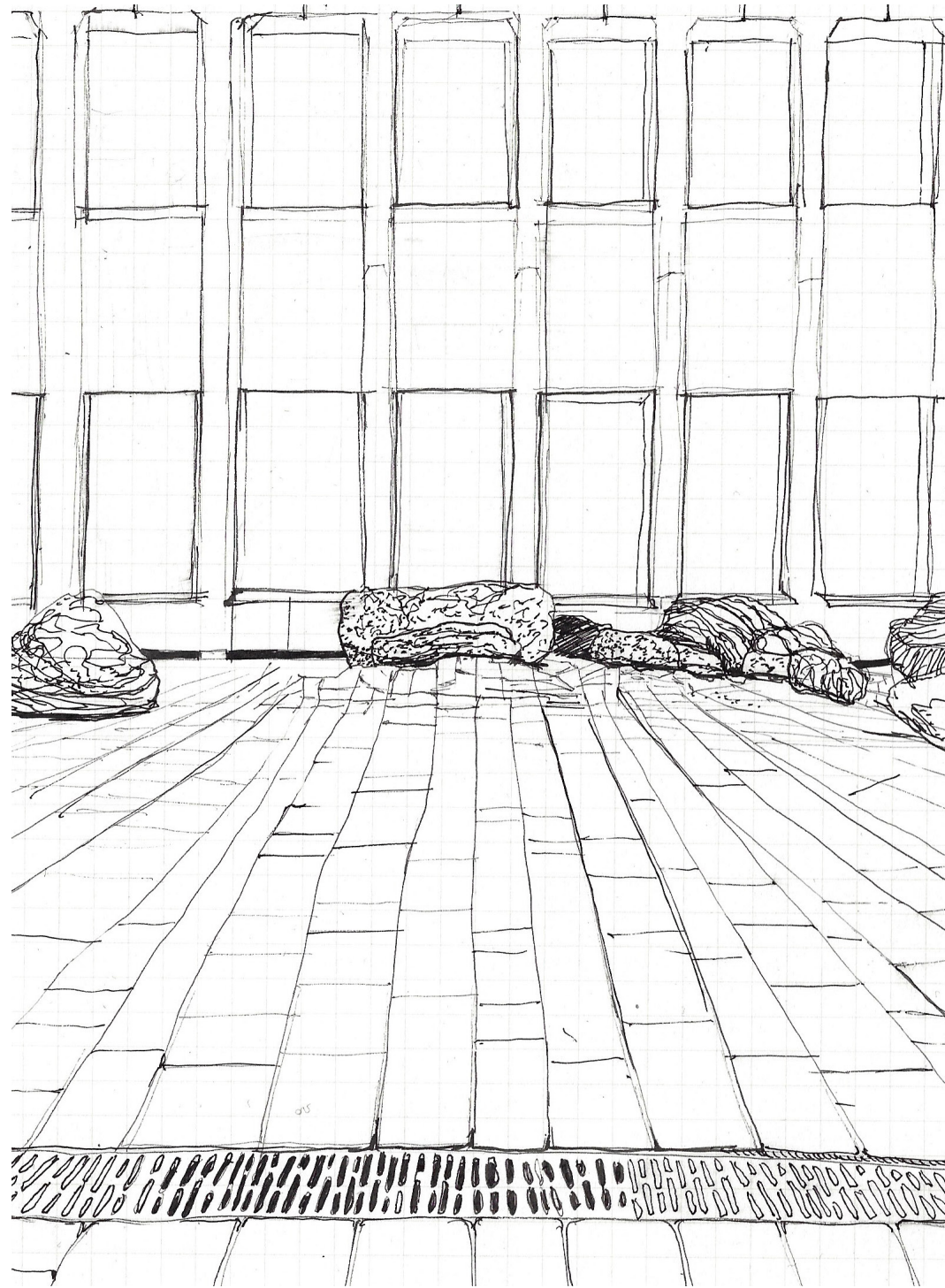








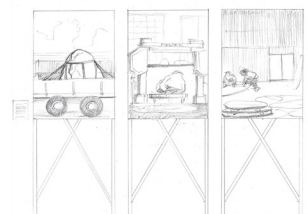






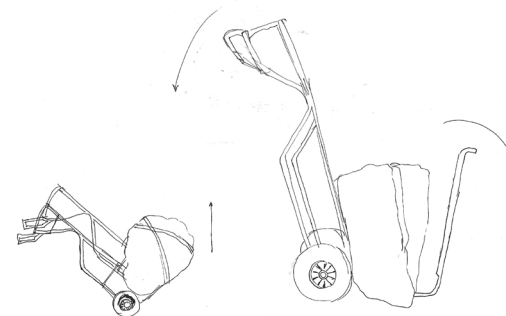
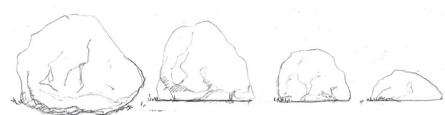
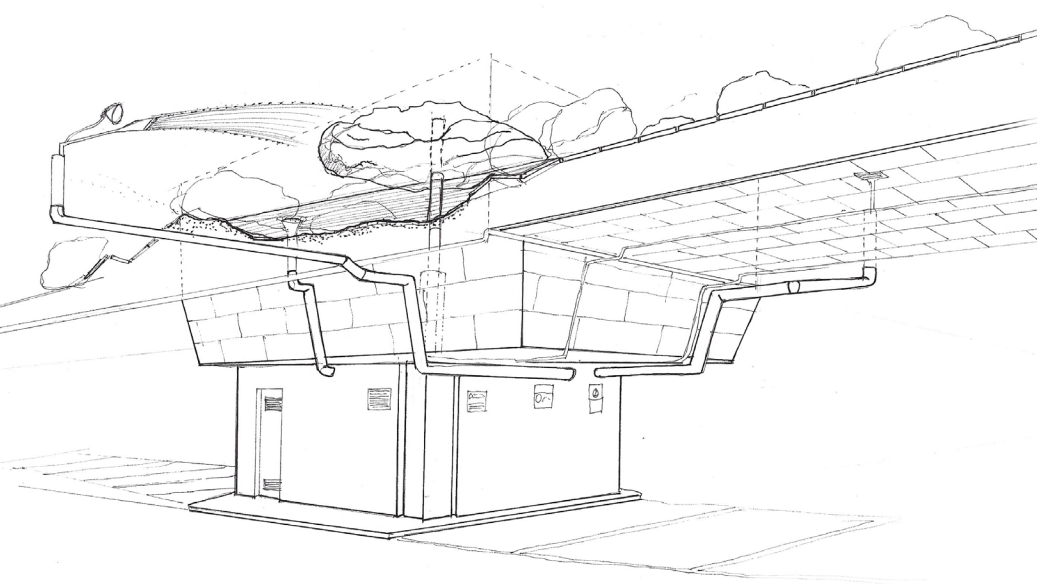
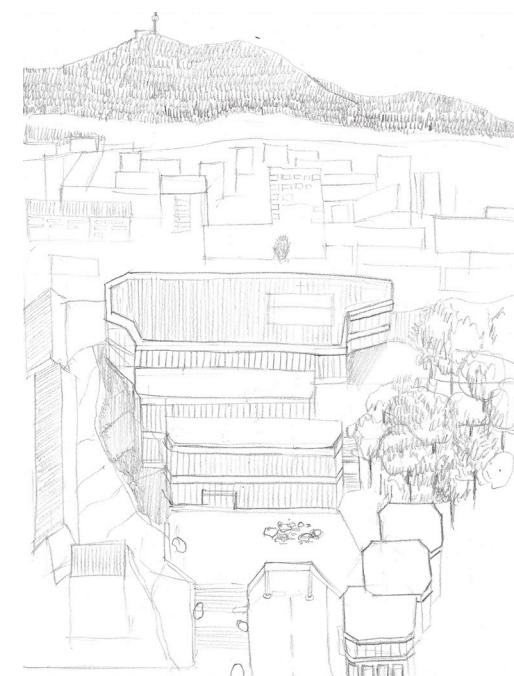
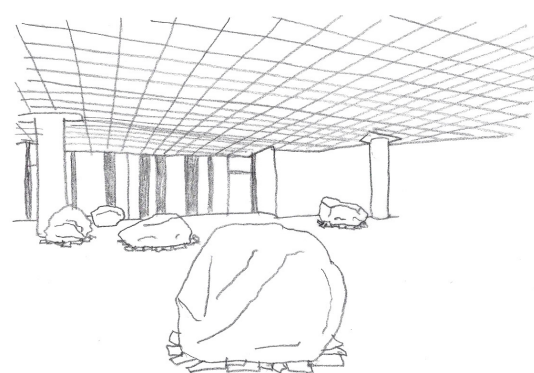
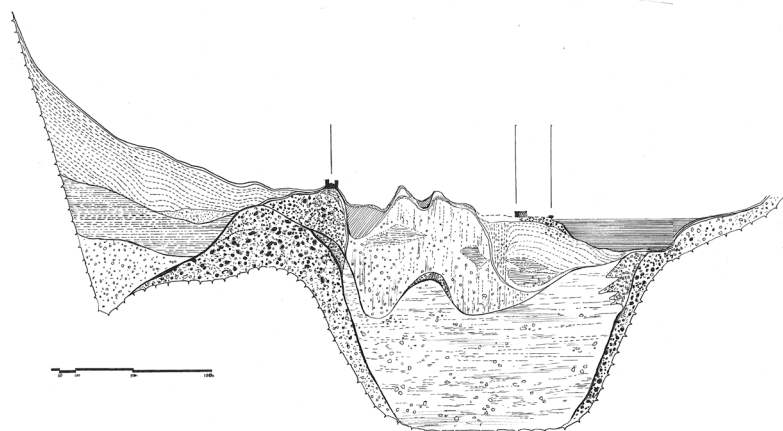
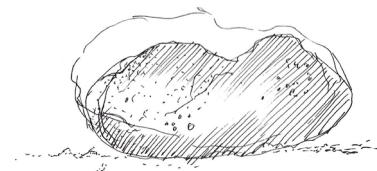
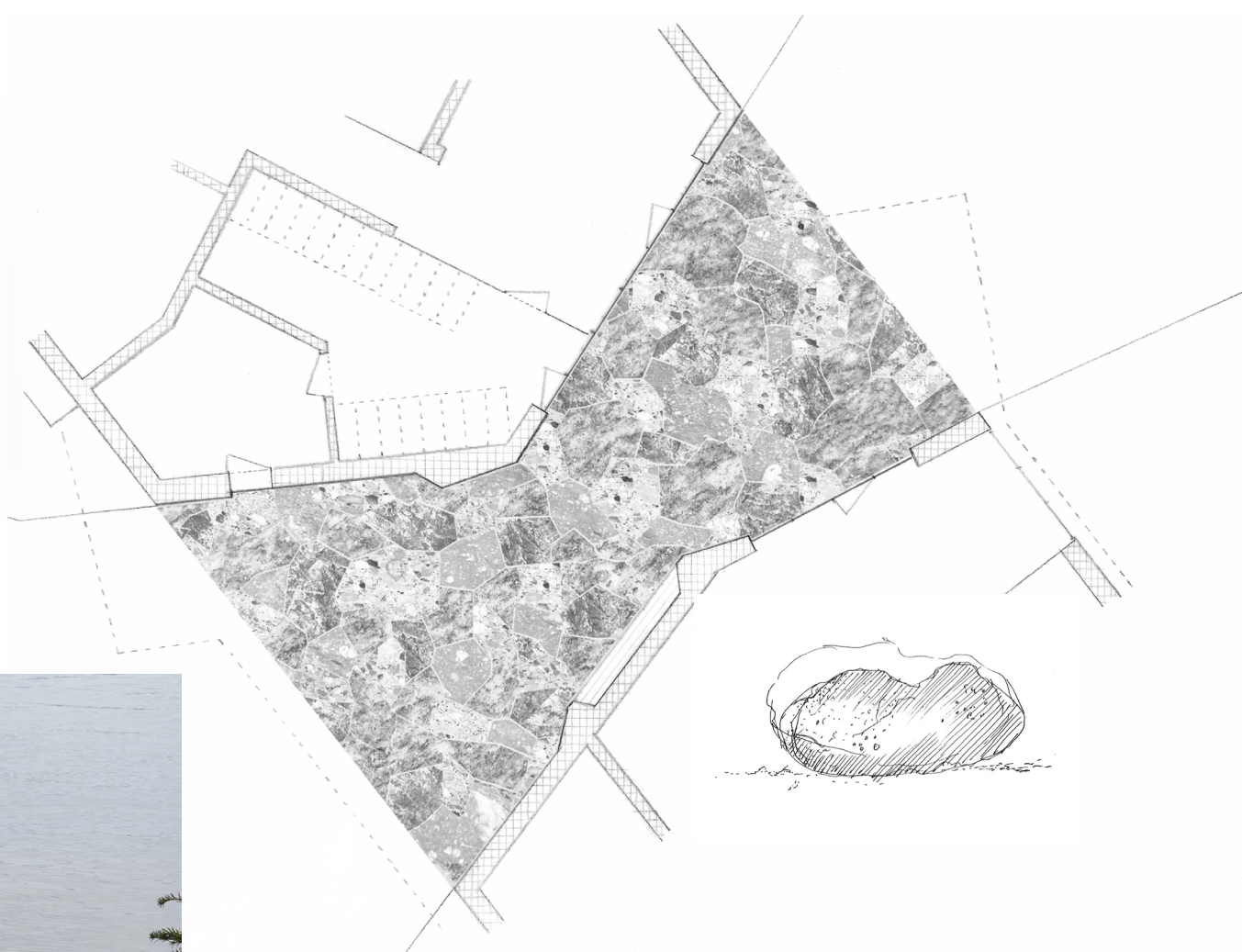






Lieber Eddy,  
 Ein Stein ging auf Wanderschaft  
 & hat es bis zum See geschafft.  
 TRIFFST DU UNS AUF EINEN TEIL  
 EIN PARK-LOKAL-ÜBER-STEINE,  
 IHR NÄHET SCHICKSAL & RESERVE  
 WIE HABEN PLÄNE RETTEN!  
 AM DONNAB, 28. März 2011, 11:22  
 SWITZERLAND  
 REINWÄCHSEL  
 SIE DOCH BESTEHE, OB DU ET SINKST!  
 Auf bald. Helmut, Maria & Leticia

An  
 Eddy  
 Ober  
 Pool Zürich

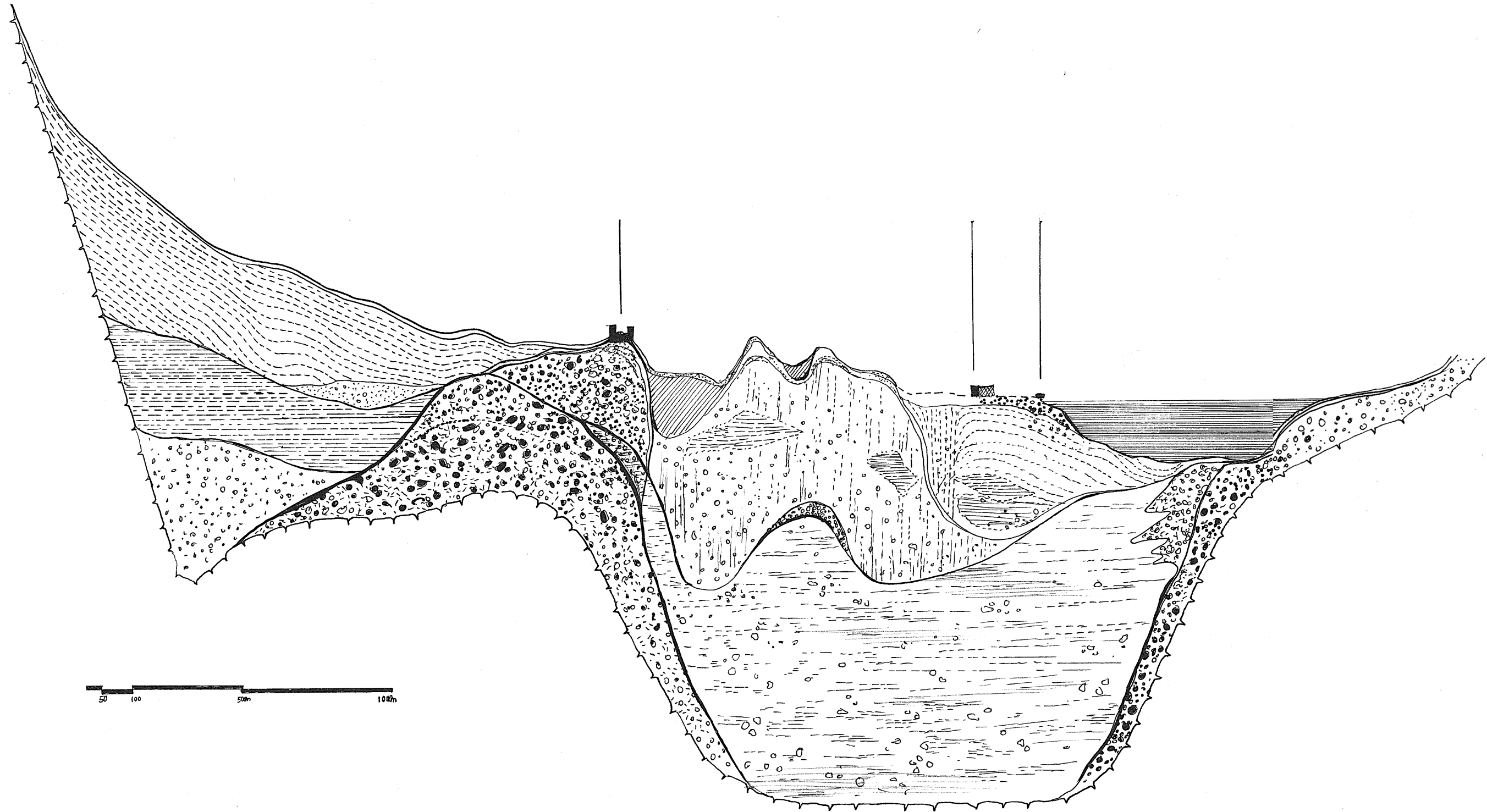




HOW TO MOVE A STONE VIDEO :

<https://vimeo.com/529837249/ea3819fc66>





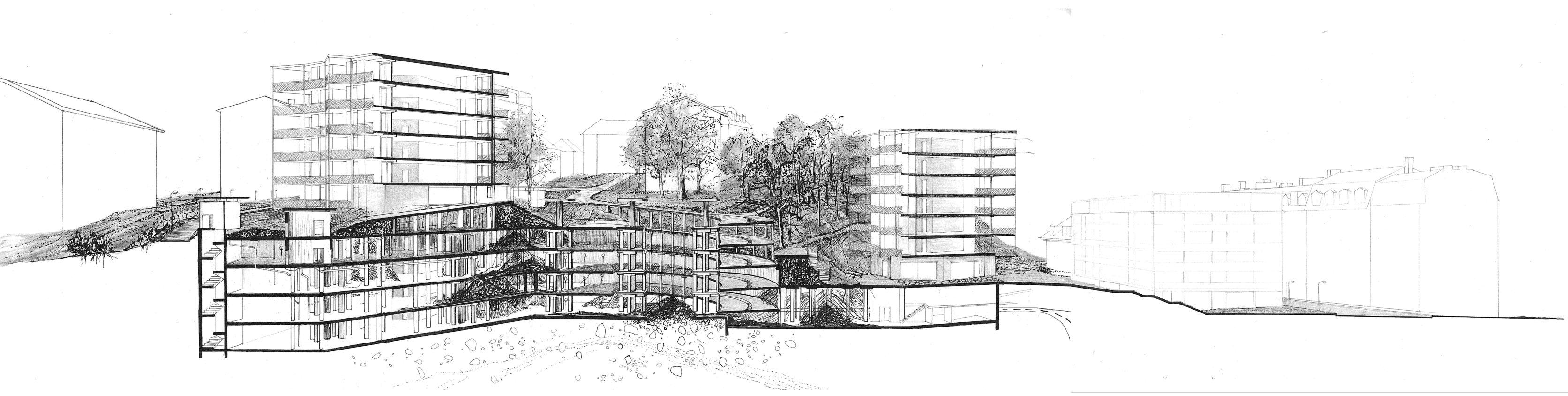
Lieber Eddy,  
Ein Stein ging auf Wanderschaft  
& hat es bis zum See geschafft.  
TRIFFST DU UNS AUF EINEN TEE &  
EIN PAAR WORTE-ÜBER STEINE,  
IHR NAHES SCHICKSAL & BESSERE  
WENDUNGEN?  
WIR HABEN NEVIGKEITEN!

AM SONNTAG, 28 März 2021, 16<sup>00</sup>  
Bluntschlibrunnen  
Rinkenanstalt  
SAG DOCH BESCHIED, OB DU ES SCHAFFST!  
Auf bald. Matyas, Marion & Leske

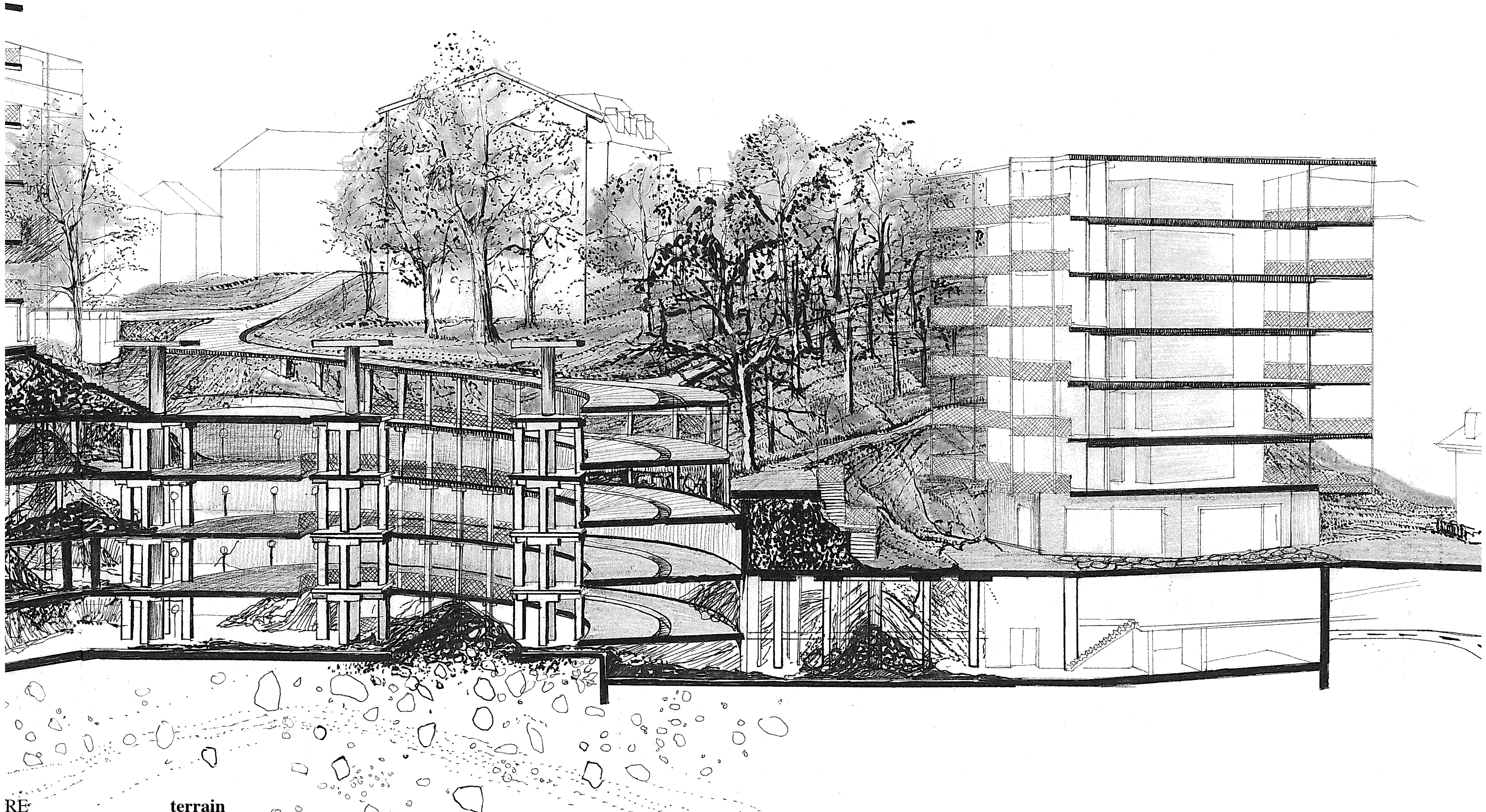
An  
Eddy  
Ober

8001 Zürich





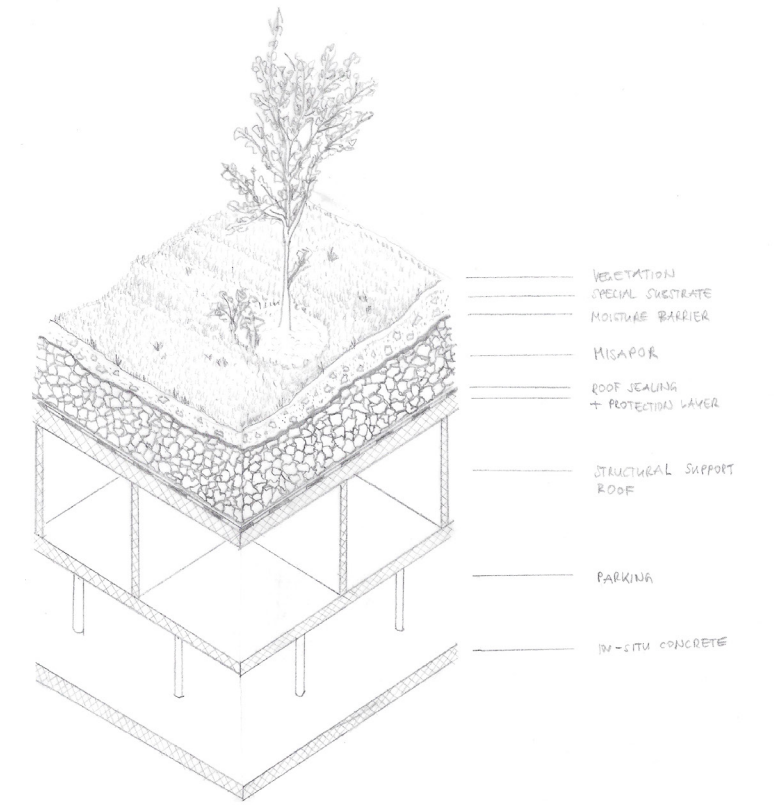
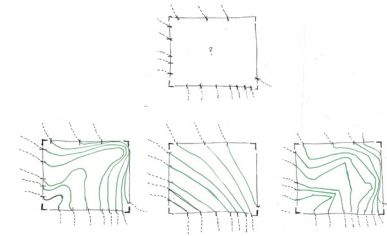




RE

terrain





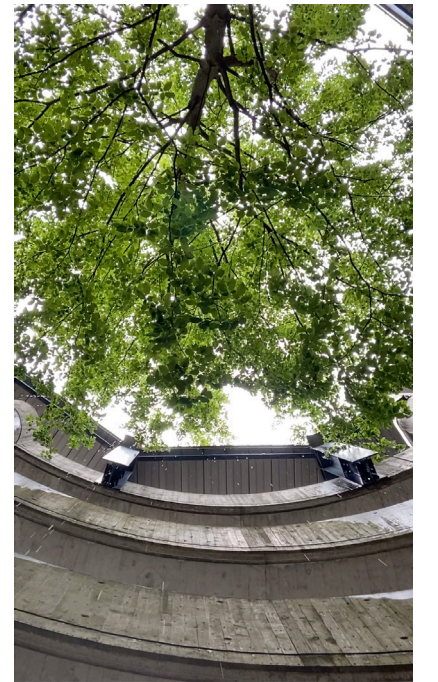
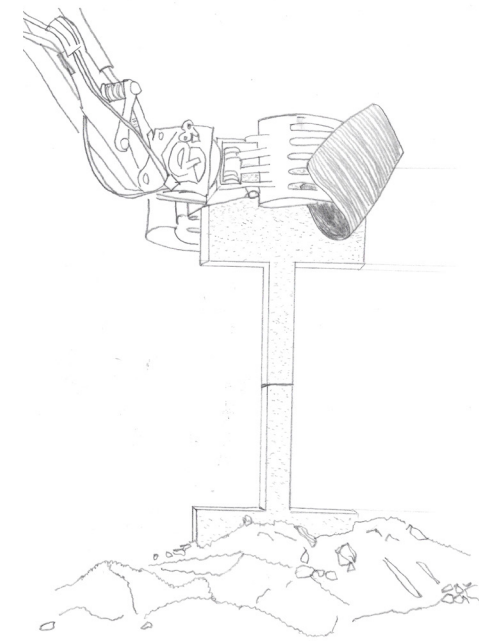
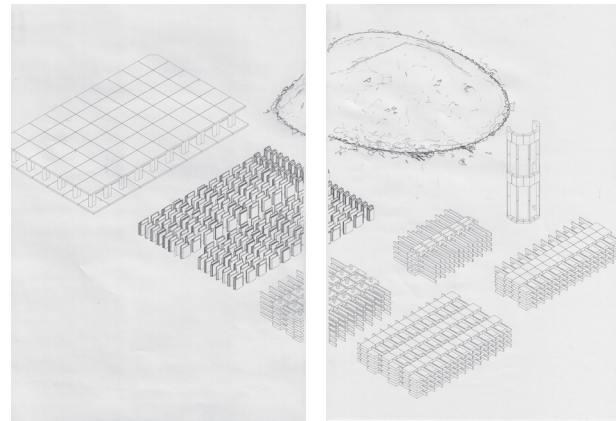
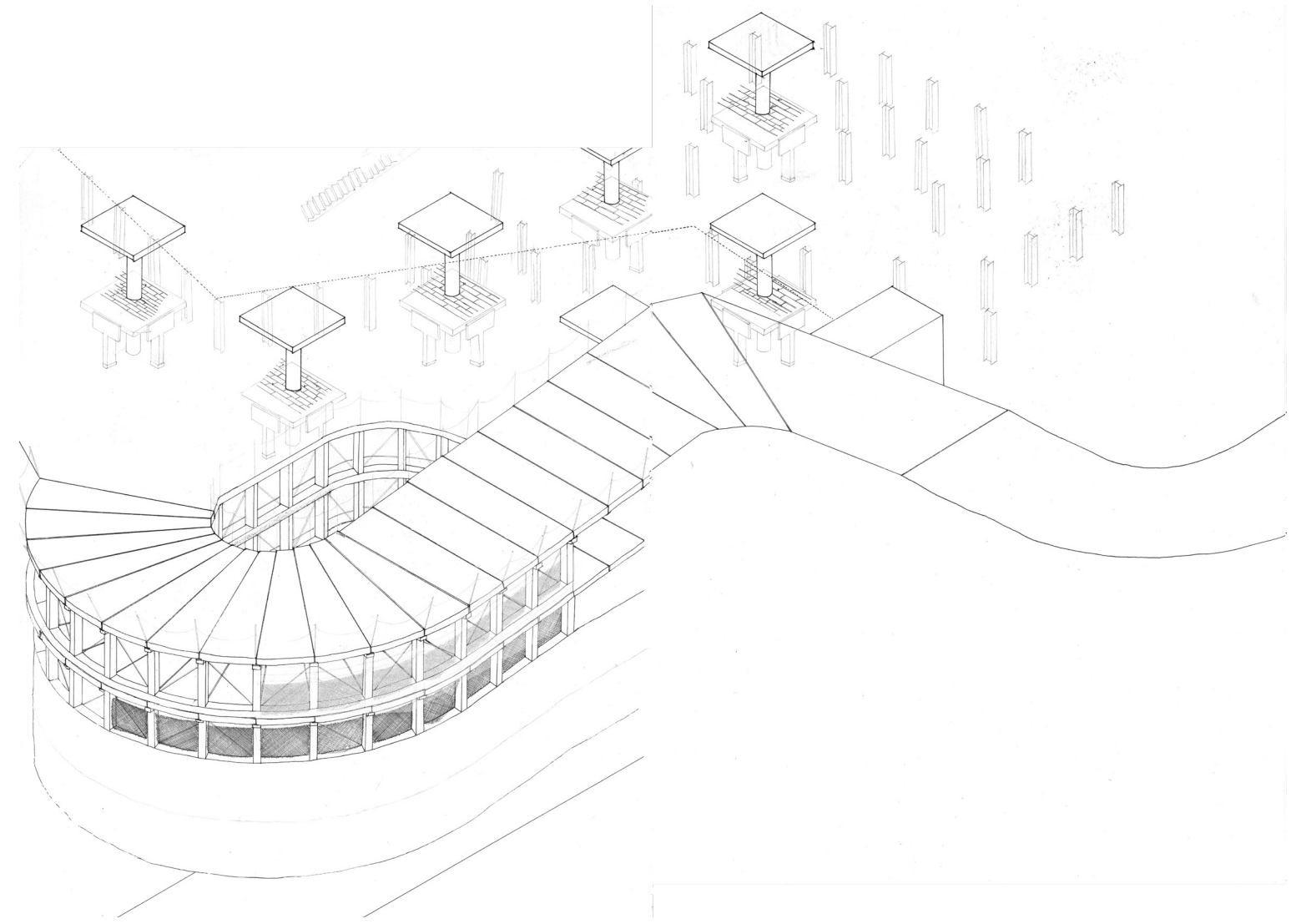
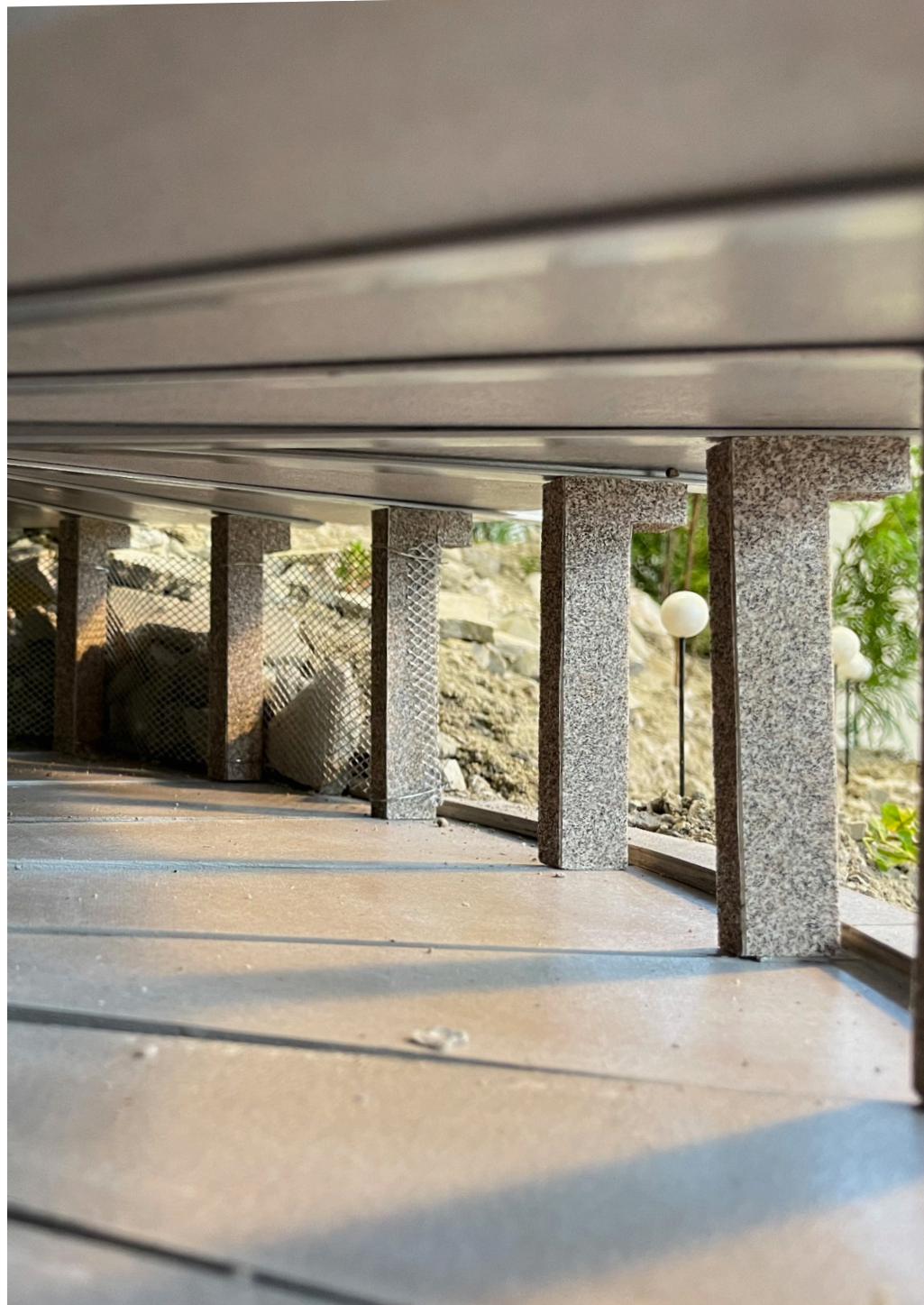








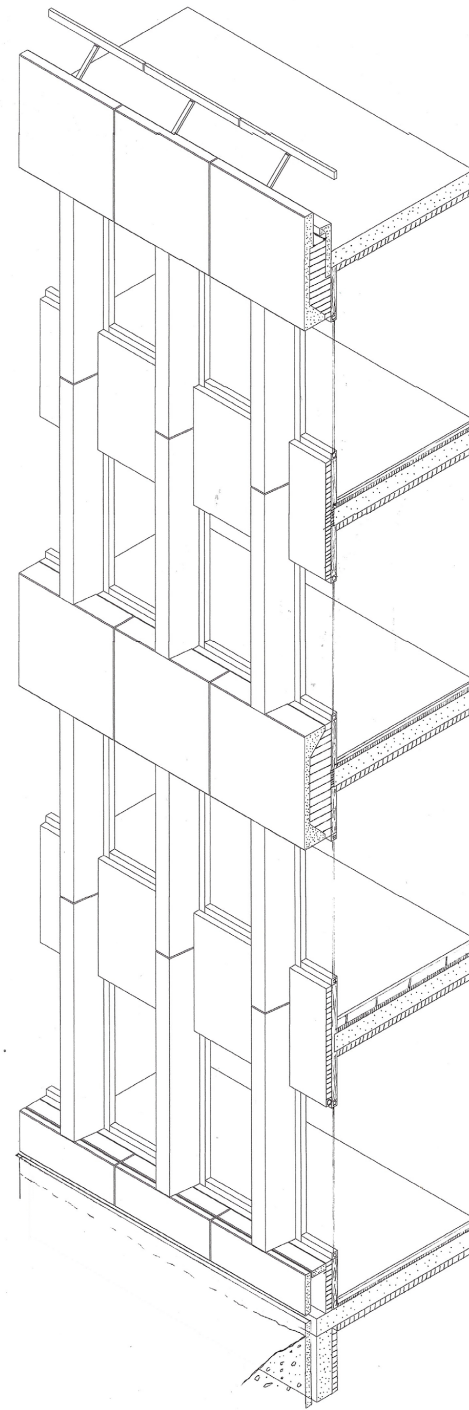
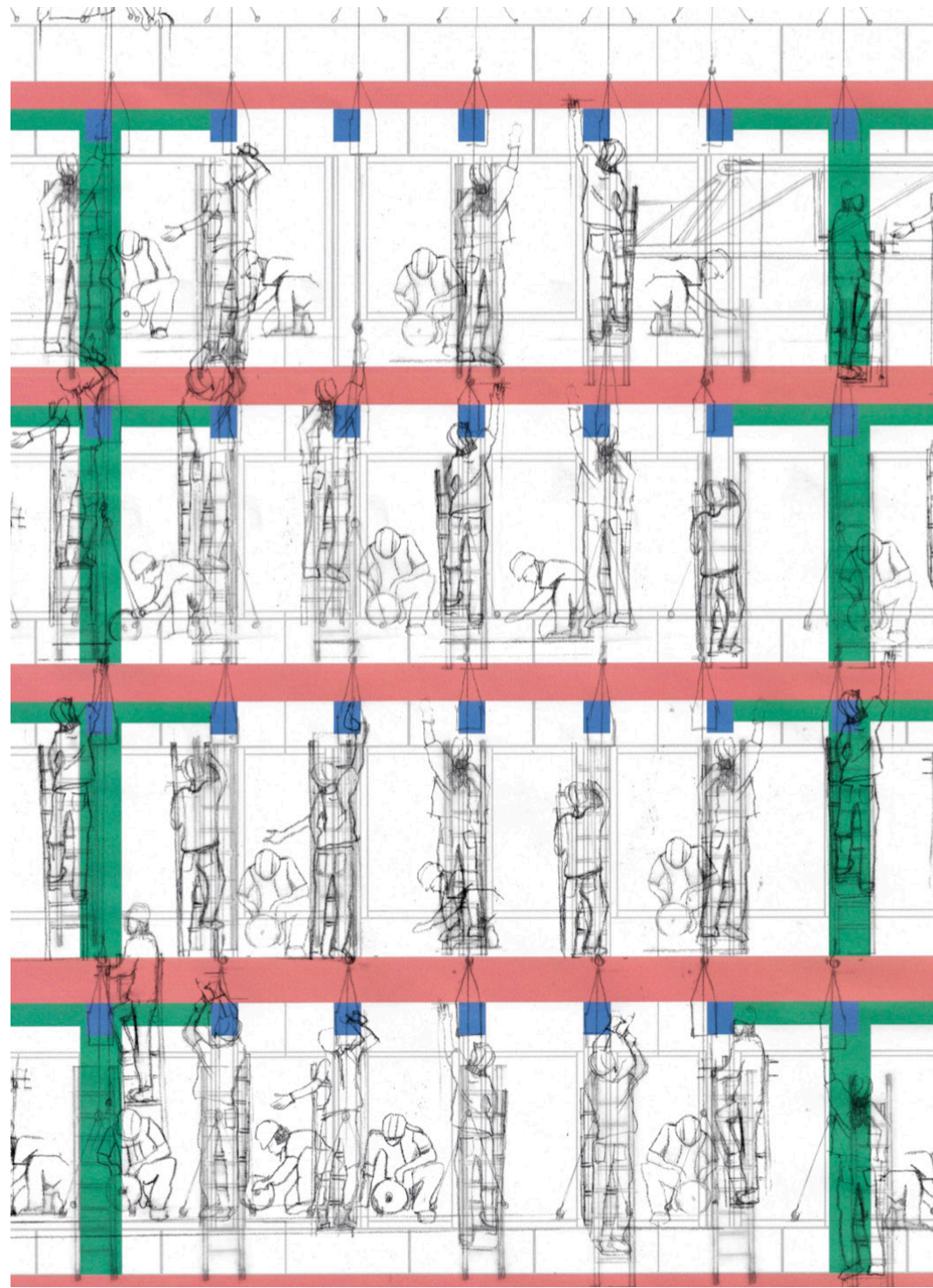


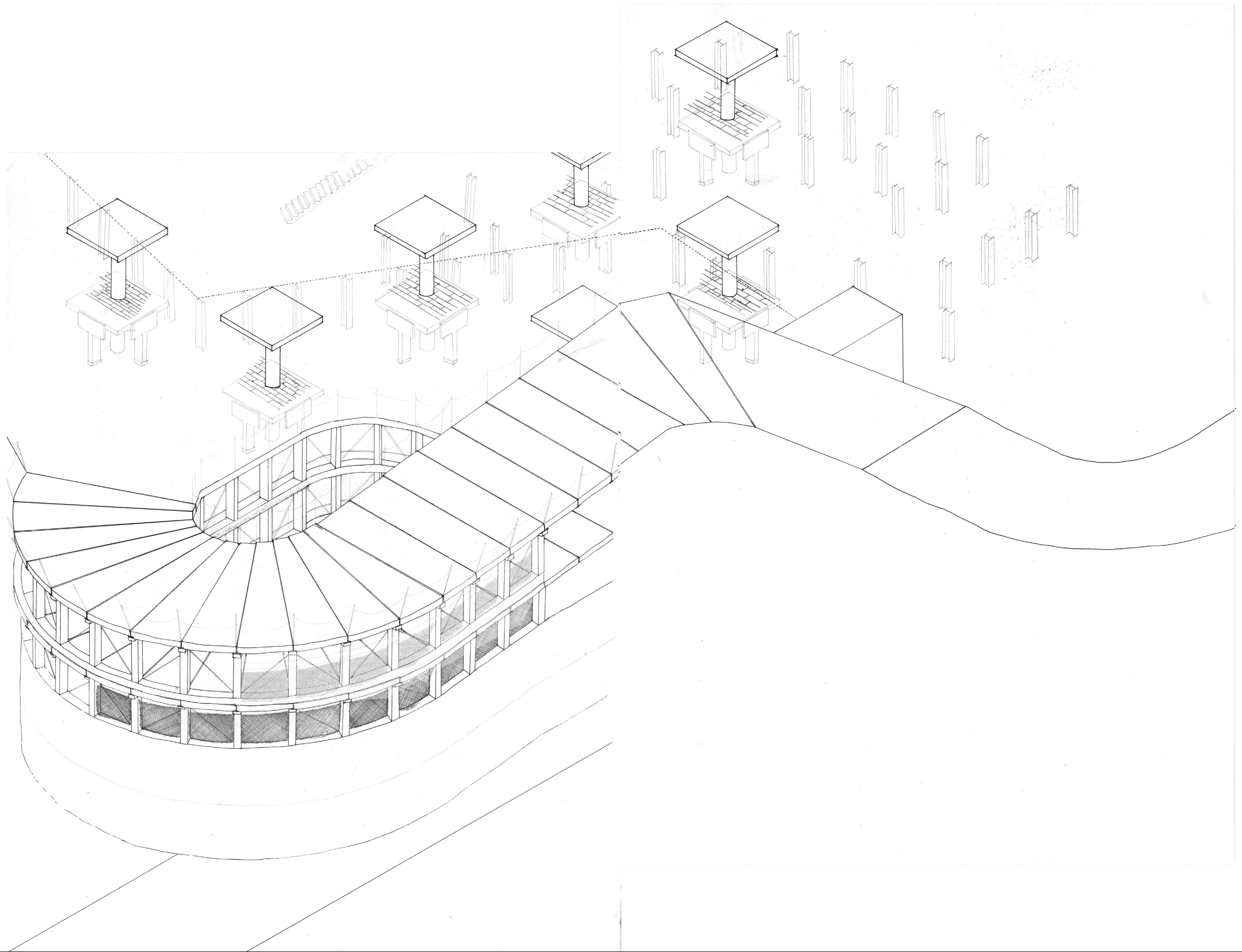


RE

ramp



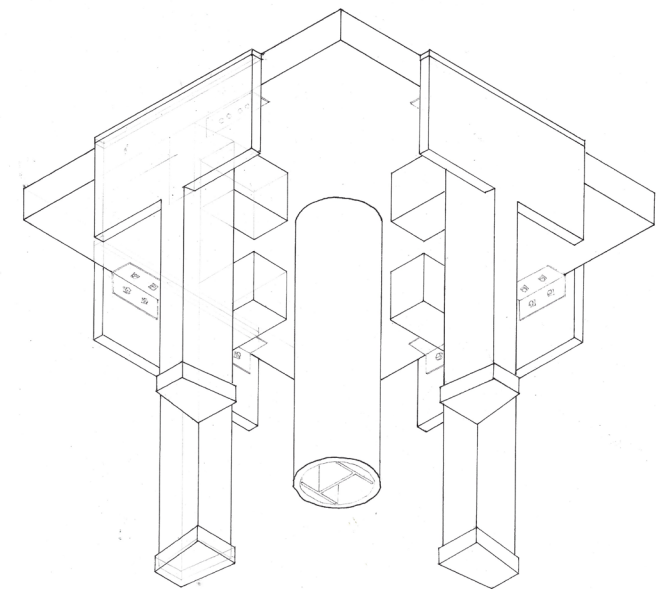
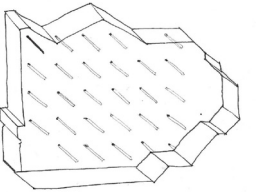
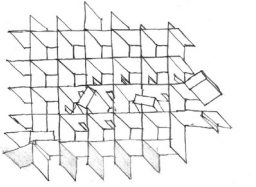
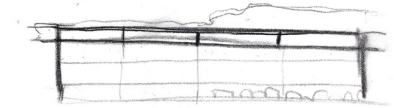
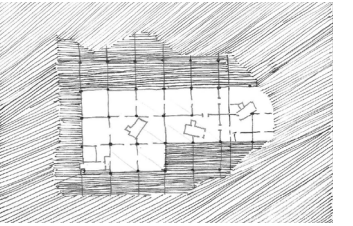
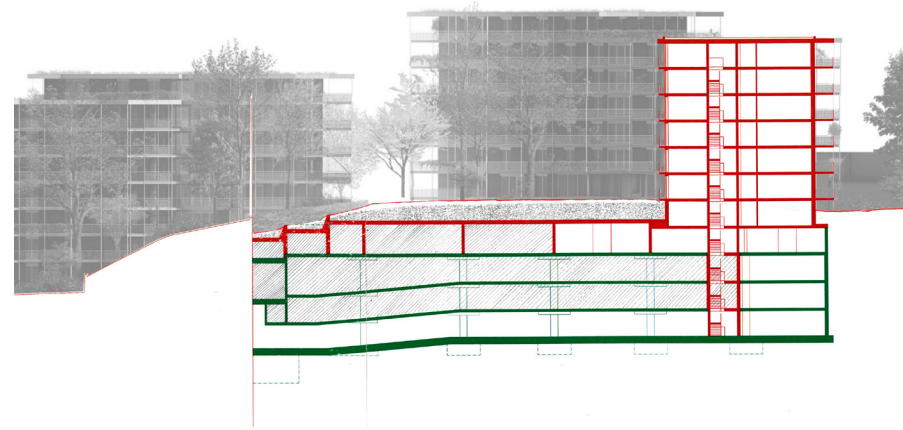




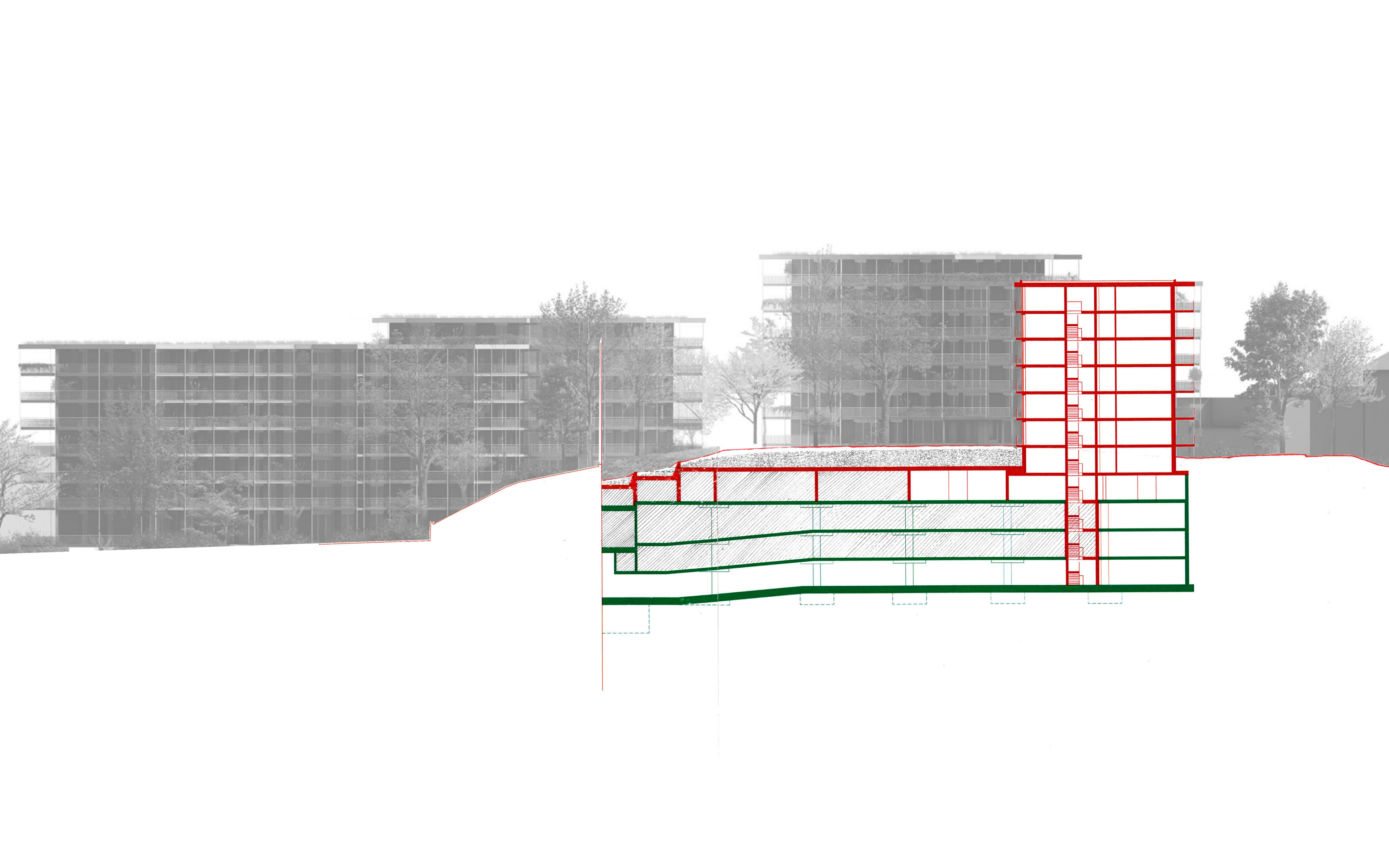


RE

**ramp**









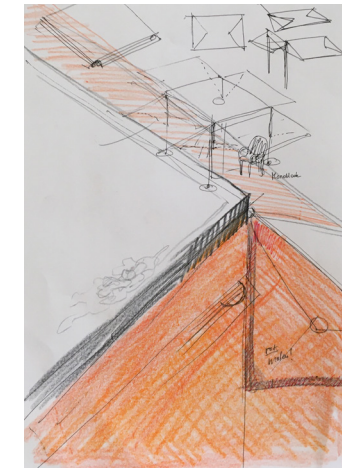
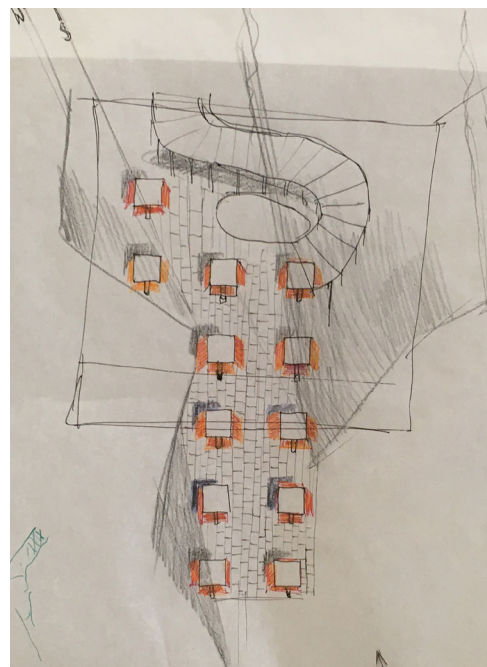




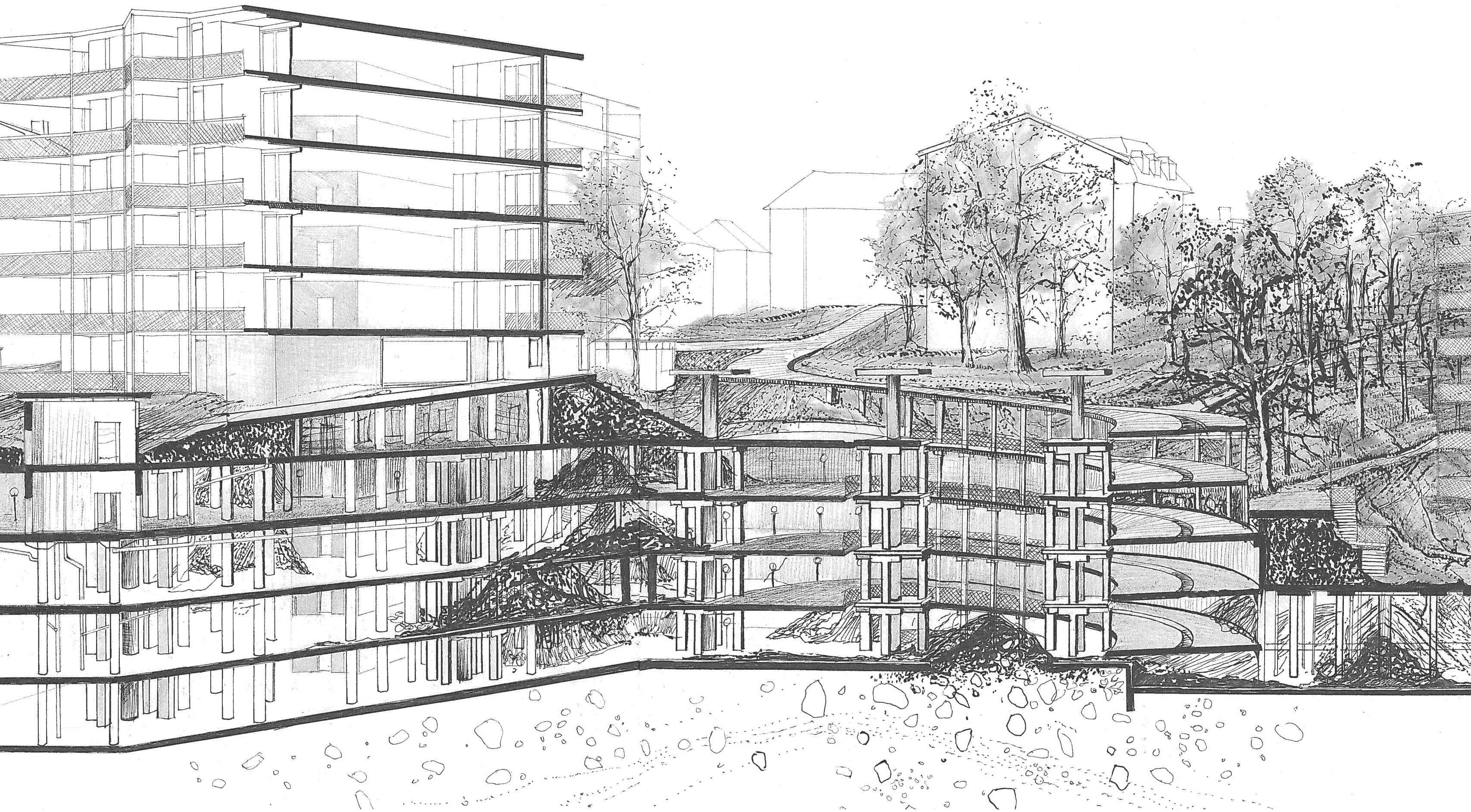
RE

**park**











*On the square of St. Peter's Collegiate Church stands an old large oak, which is supported by triple columns; a peculiar miracle of nature.*

*And is imaginary plan / square whose length at 289 shoes and the width of 155 shoes. It is beautiful and graceful and is especially suitable for walking, because it is a beautiful meadow, on which there are elms and linden trees (144 in total) and two fountains. Therefore, the square is a place for recreation and entertainment.*

*At the same time it is a place for cross-bowmen and lots of other sorts of physical exercise.*



The Stadtgarten Basel  
17th Century Engraving of St. Peter's Square in Basel Matthäus  
Merian the Elder  
1654







