

studio jan de vilder
universum carrousel journey
hardturmbrache
33.3%, 333 %, 3.3%

re-thinking -re
re-zu-rich

Anna Greta Kochhäuser

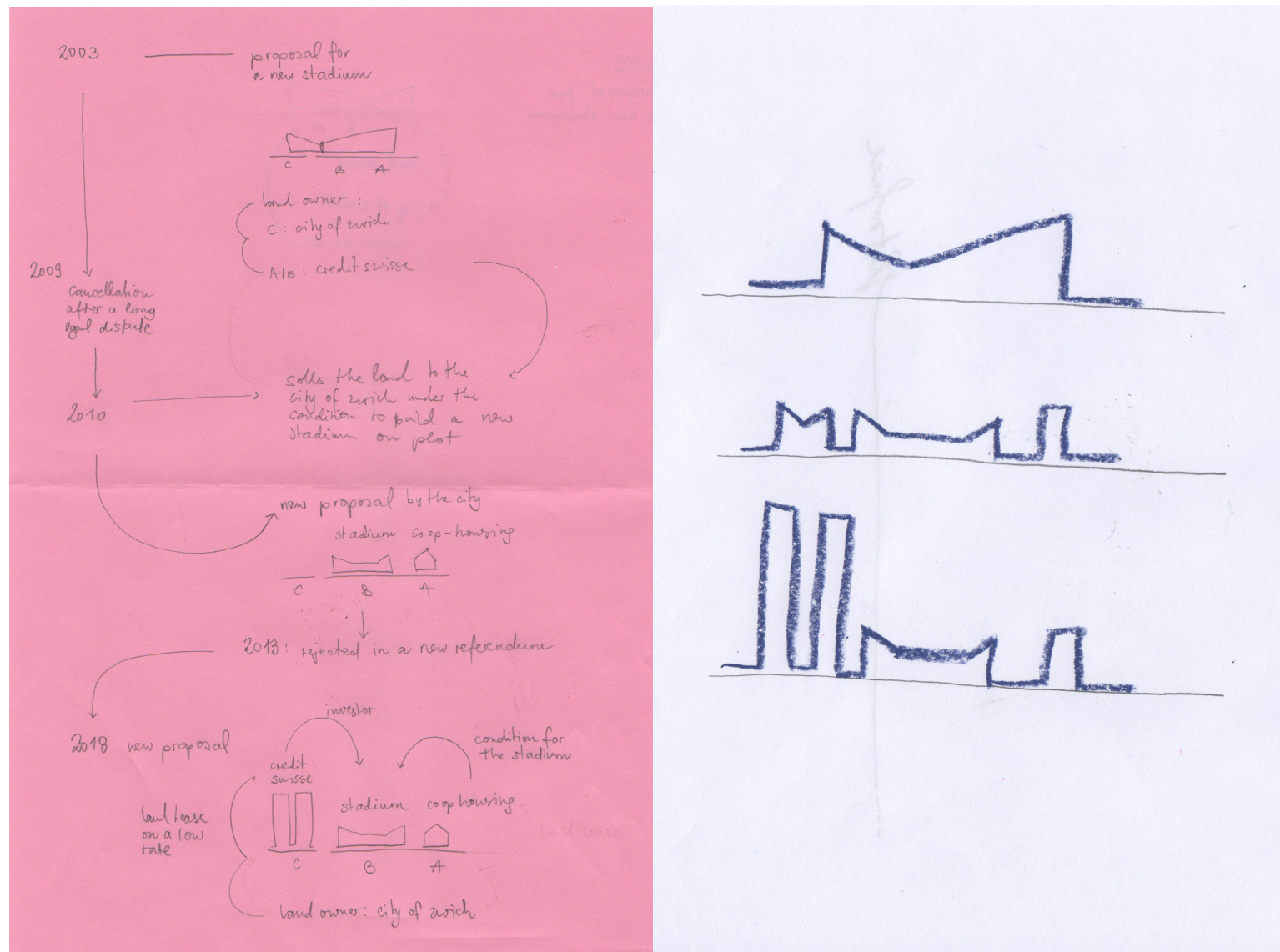
the hold of all things

introduction

It is not about *re-jecting* the Masterplan.
It is about *re-turning* to the Existing.
Re-cognizing its purpose will manifest its *re-main*.
And *re-lieve* the ground from its heavy burden.

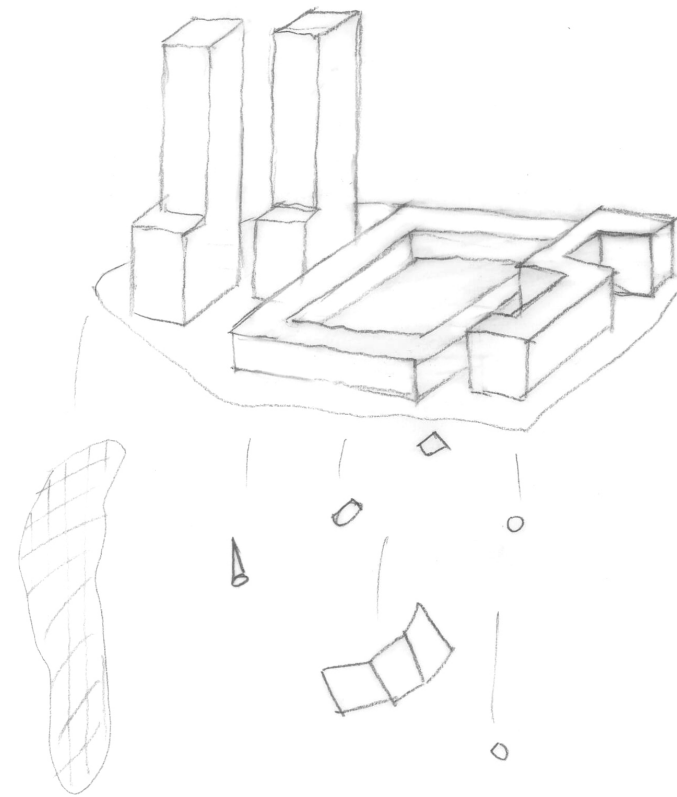
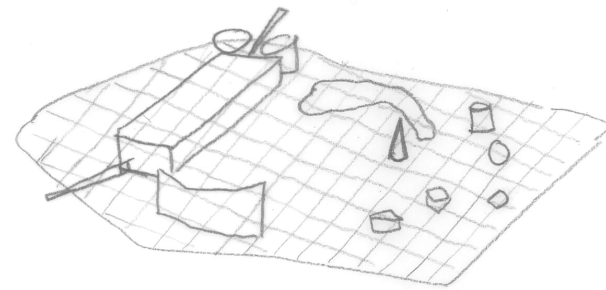


*Sechseläutenplatz 1940
canolafield*

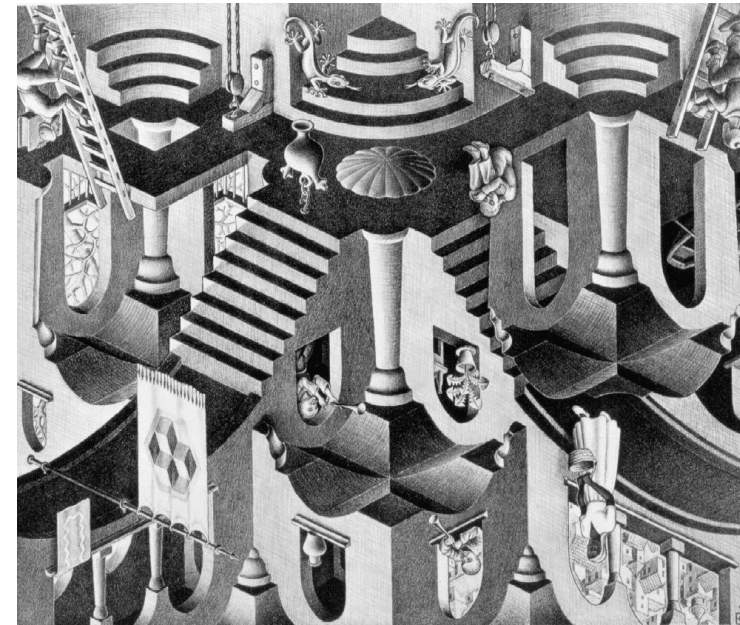
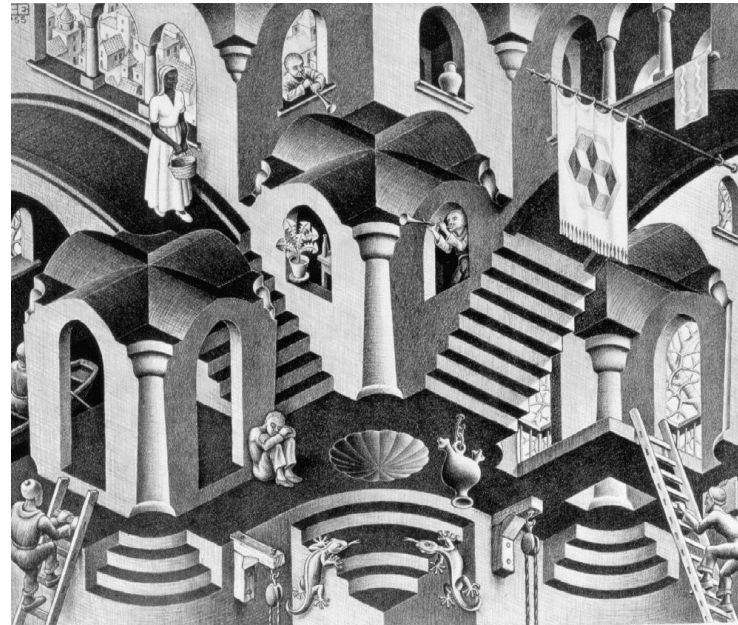


retrospective

the site and its ground



erasing history



The ground surface - The surface of action

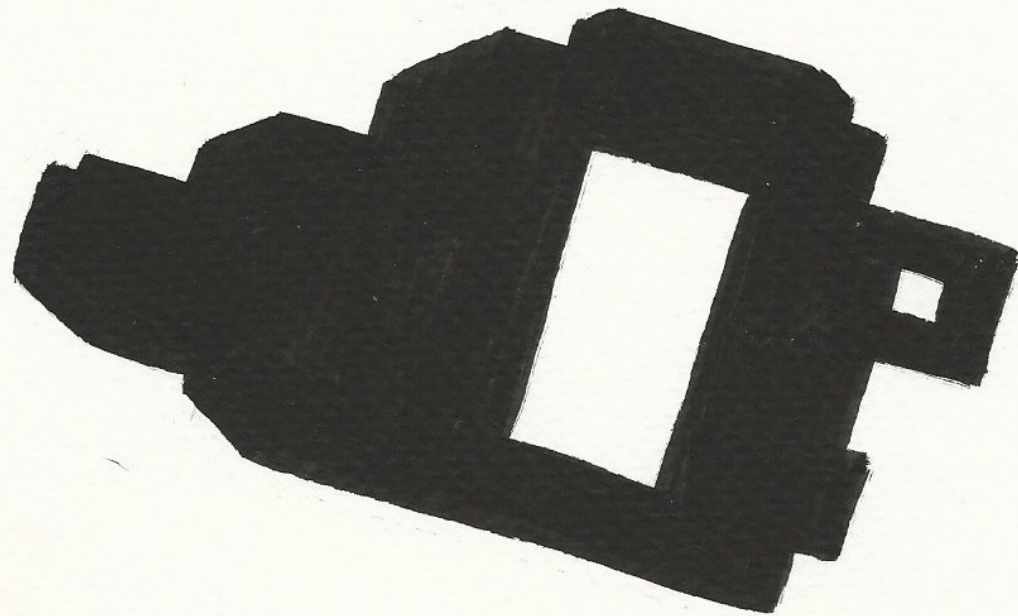
*The starting point of consequences -
When it comes to the question on
,how to deal with the existing and the new at once'
it's the turning point where we may re-gret.*

*Its the ground itself, the inhabited nature,
the built structure and the future structure.*

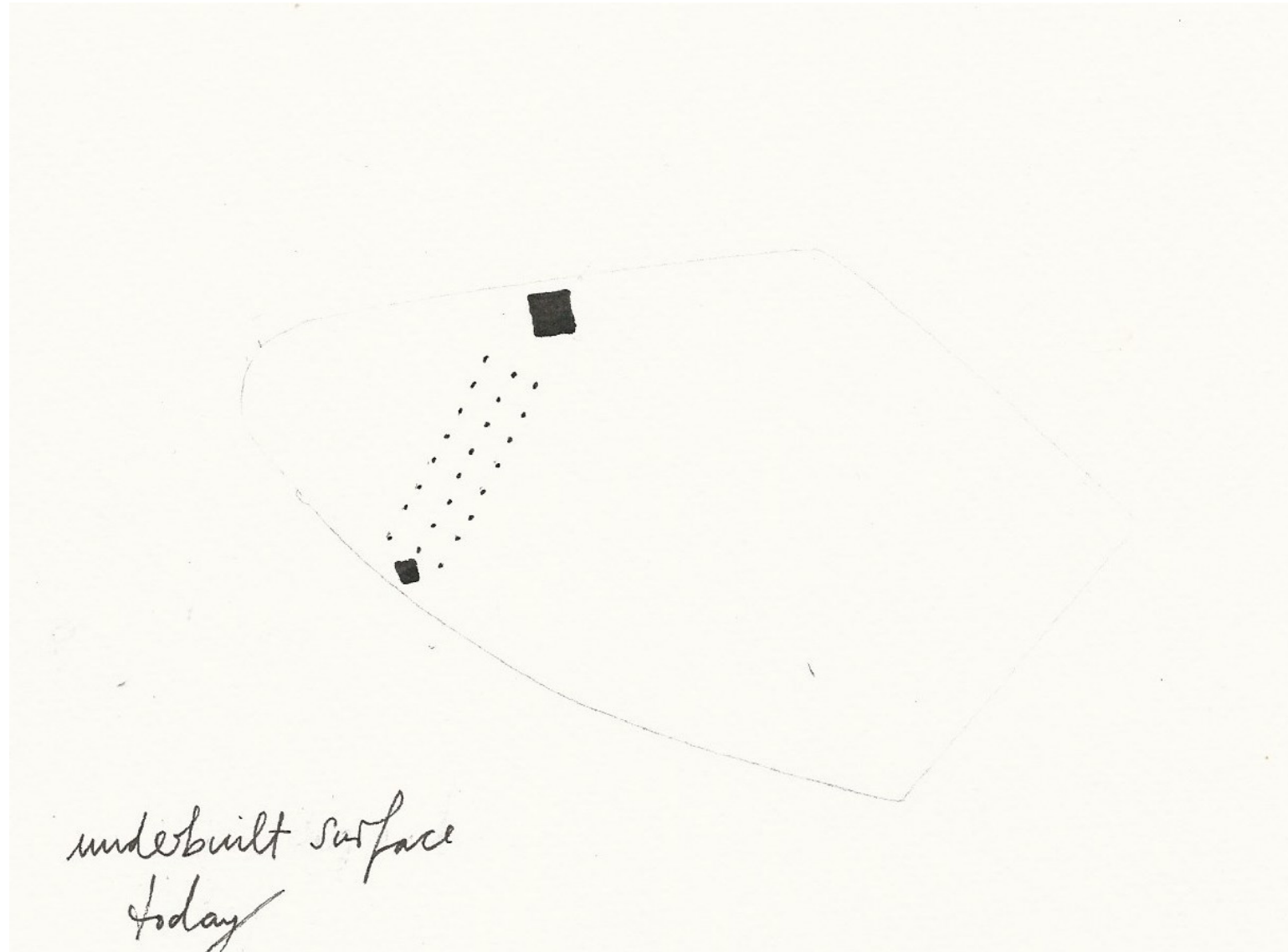
*MC Escher
Ambigious Figure*



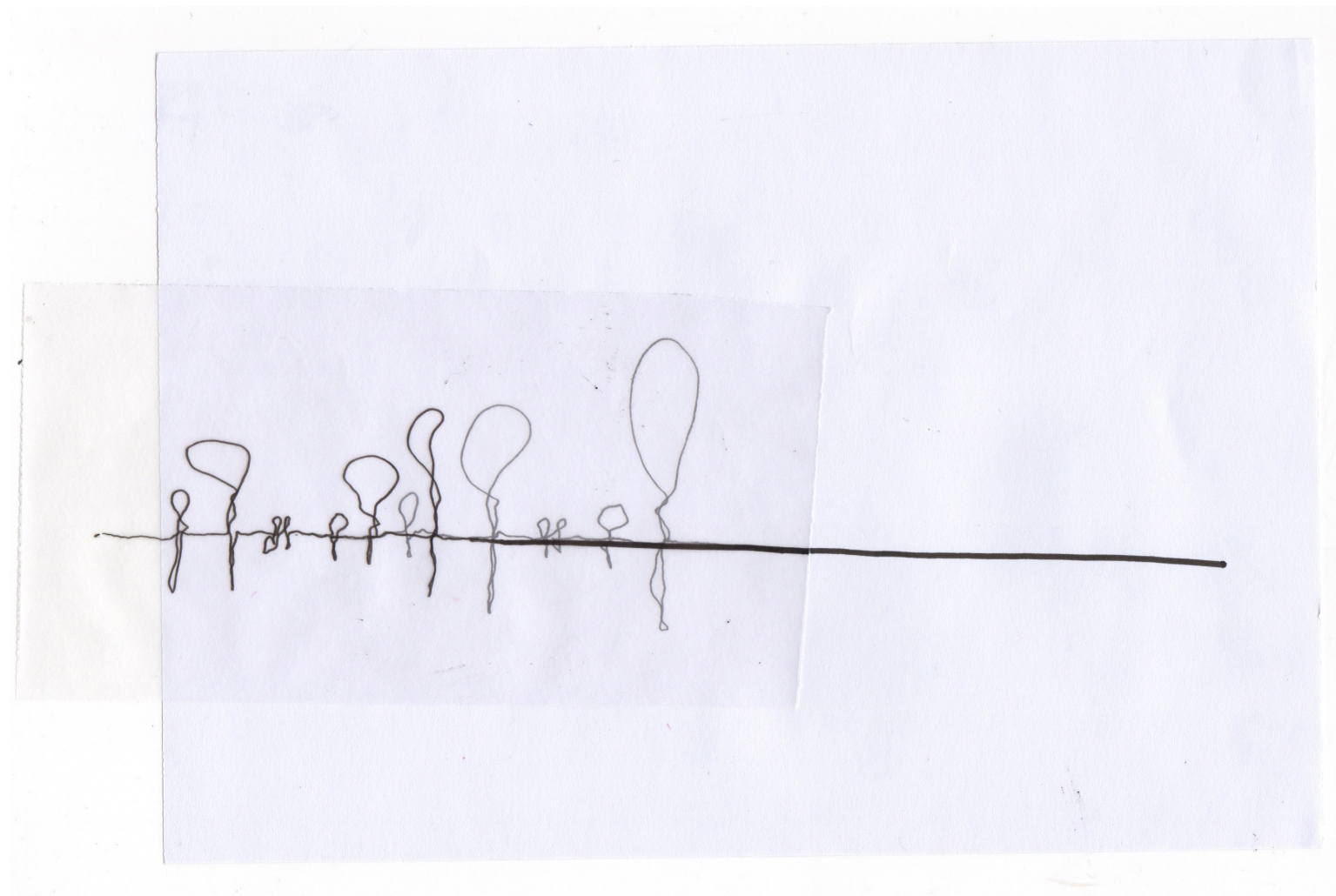
sealed surface
today



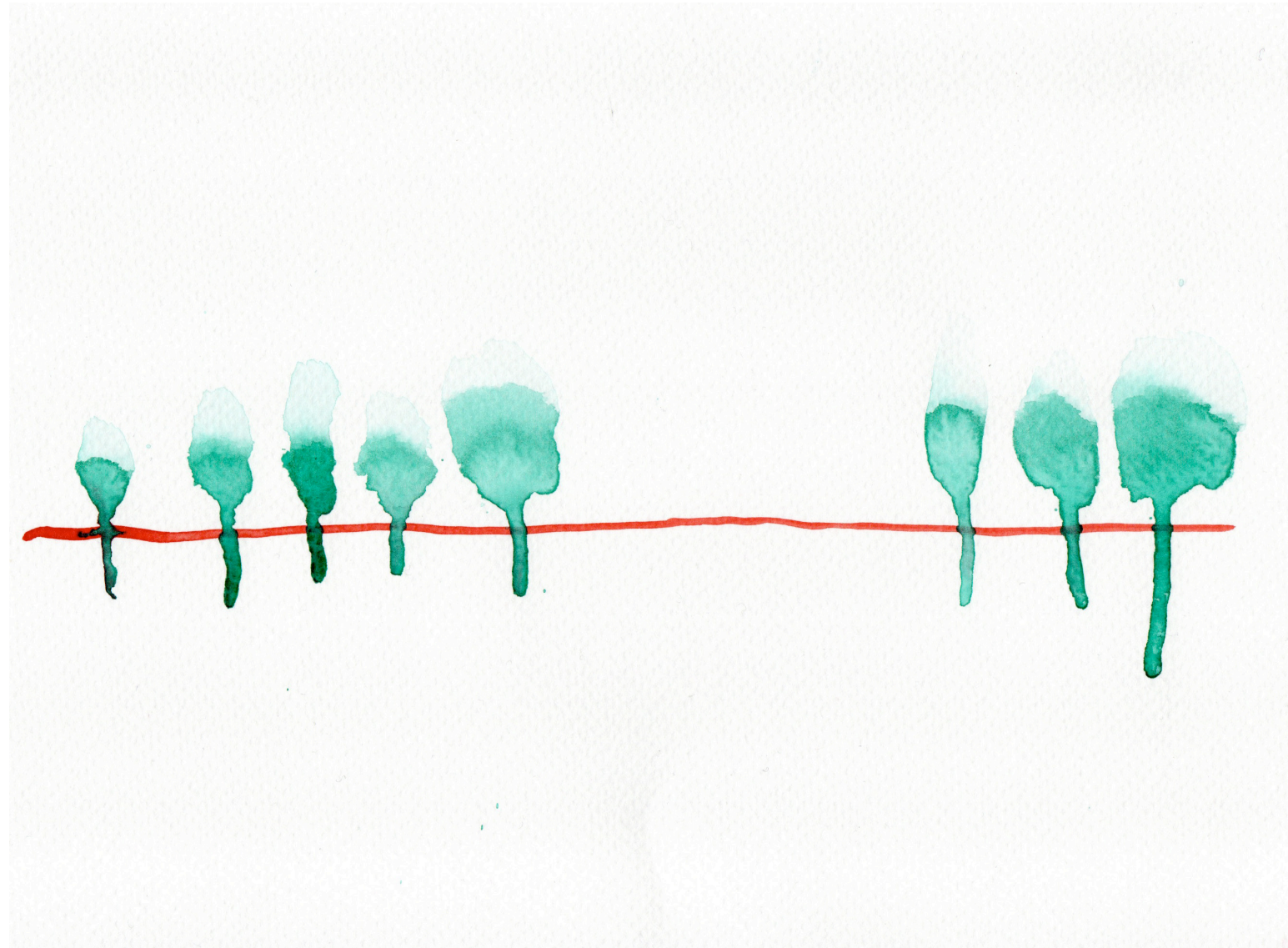
underbuilt surface
masterplan



underbuilt surface
today



flat surface



friction

the freedom of use

*Anne Lacaton &
Jean Philippe Vassal*

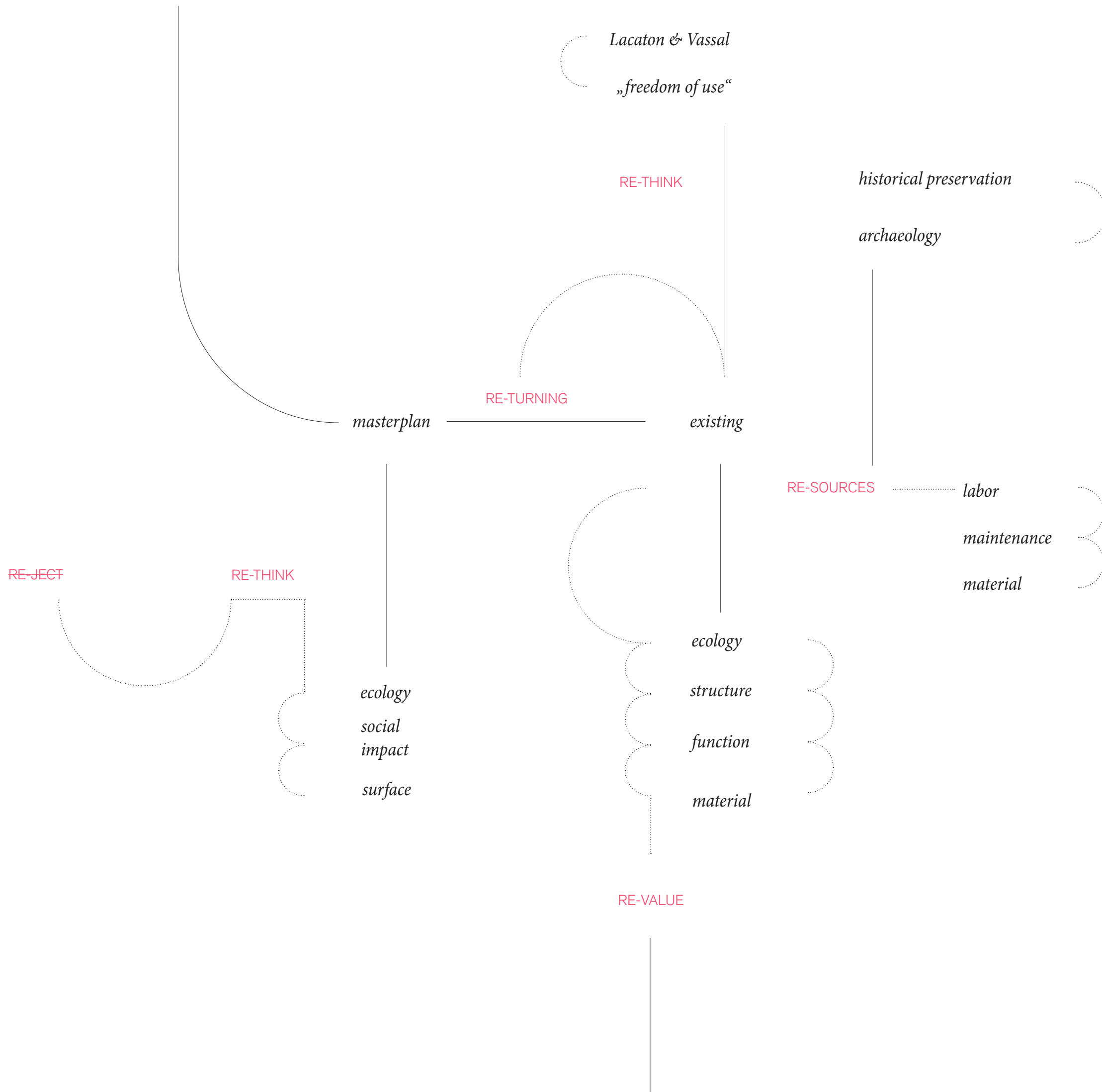
*„Priority: It means to make all existing situations outstanding.
By giving priority to what is unloved, disastrous, or unfinished; „And to all that
is sensitive.“*

*„Accuracy: it is a work that focuses on sensitivity, kindness, attention.
An attention paid to people, uses structures, trees, paved soils, bugs;
To everything that exists and that has been allowed so far to host, to guide, to
charm.“*

„It is to consider all kinds of geographies with equal attention“

*„It is to study the potential for evolution and transformation of each construc-
ted situation, each already equipped territory.“*

*„Precepts: it is about never demolishing.
It is about never undoing.
But adding and strengthening the balance of existing urban organizations.
It is about not cutting what is alive (...)“*



Experimenting on the consequence of the consequence.

Having in mind that each consequence could lead to further outputs referring statics, ecology and the social construct of the place.

Consequence

Changing the starting point by saving the existing leads to a rearrangement of the planned underground parking lots.

Shifting the parking back into its old environment and existing structure.

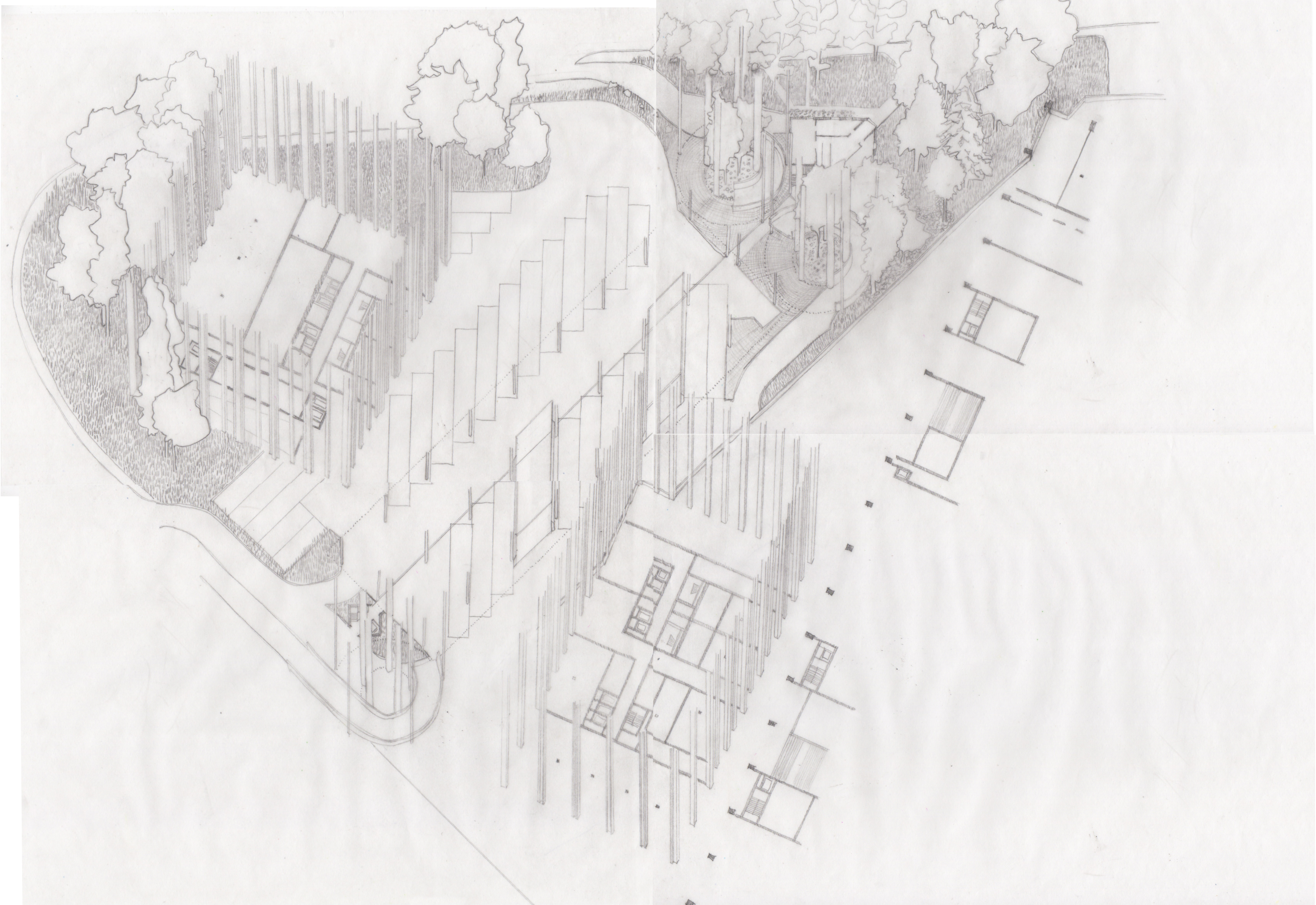
Consequence of the consequence

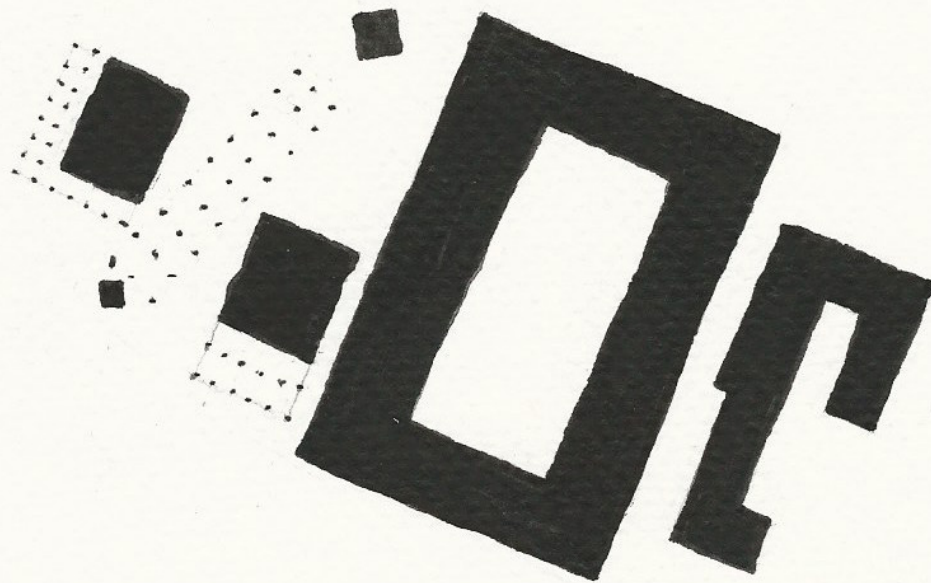
Leads us to the overlay of the existing with the footprint of the planned east tower.

While using parts of the existing structure as a parking garage demands a shifting of the tower. In order to keep the existing structure as a whole and don't destroy it's needed infrastructure.

(...)

consequences...





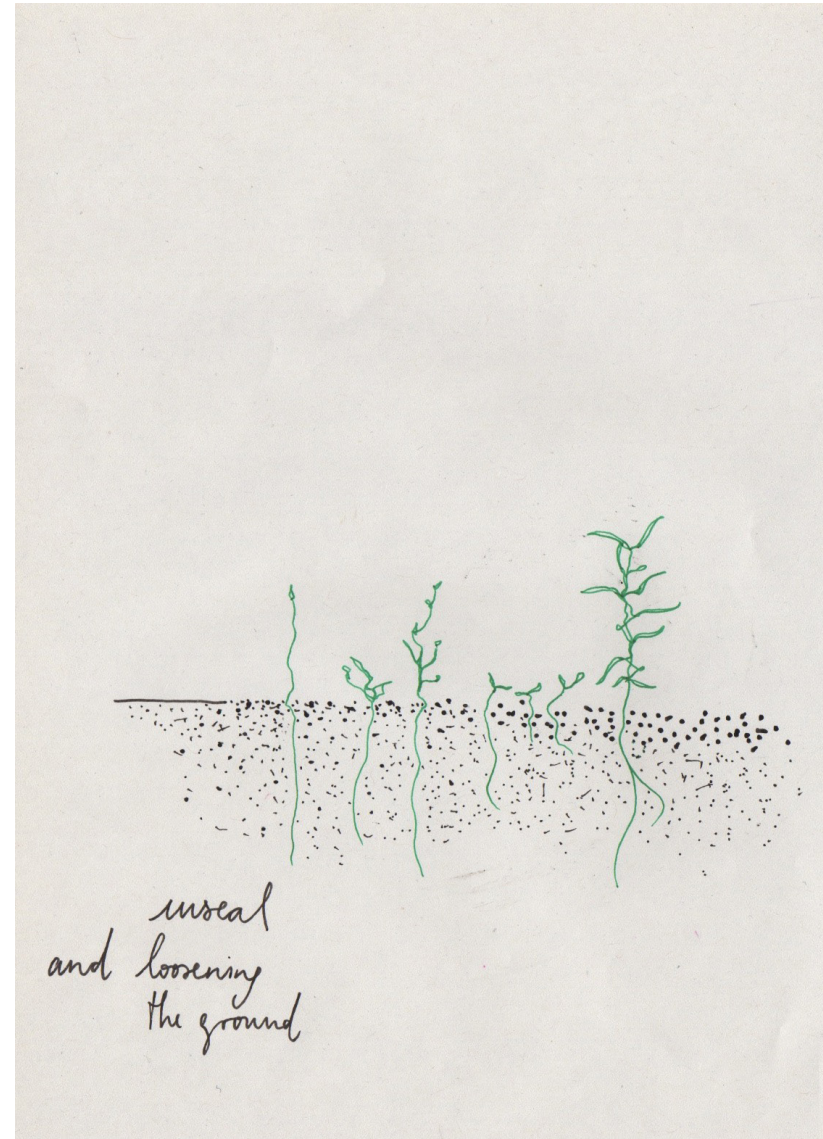
underbuilt surface
tomorrow

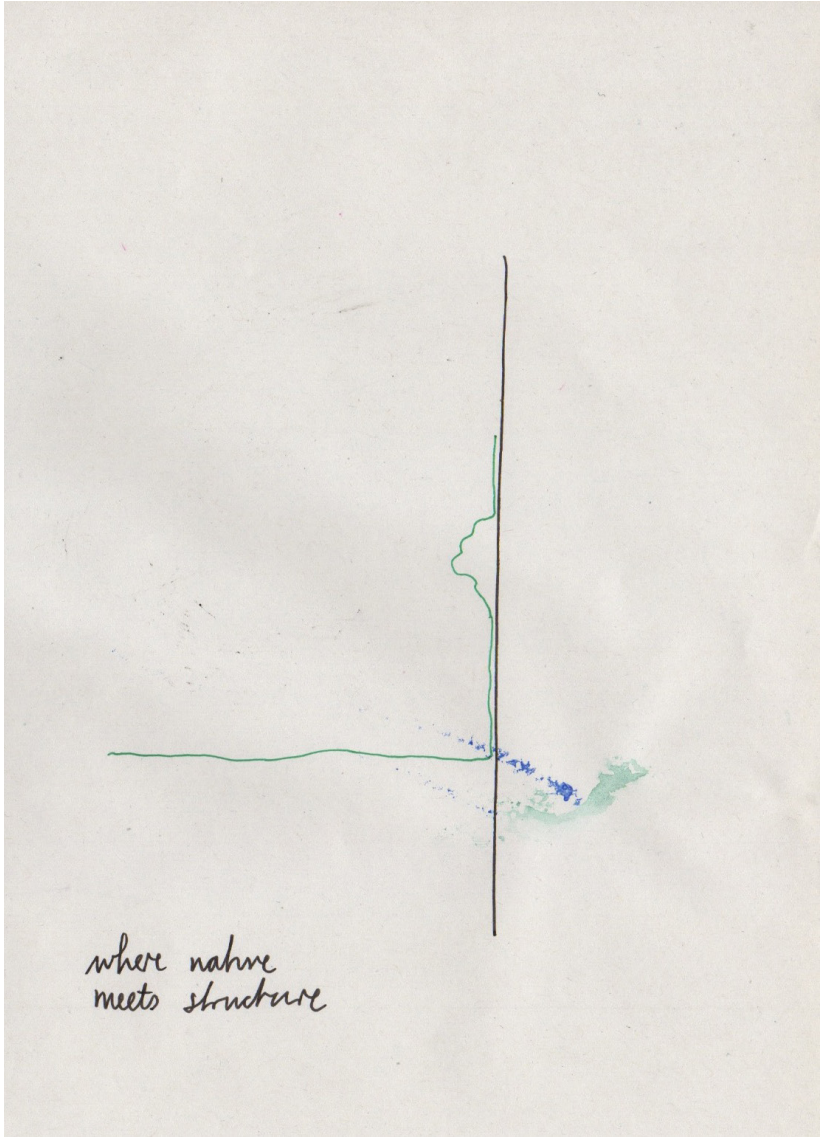
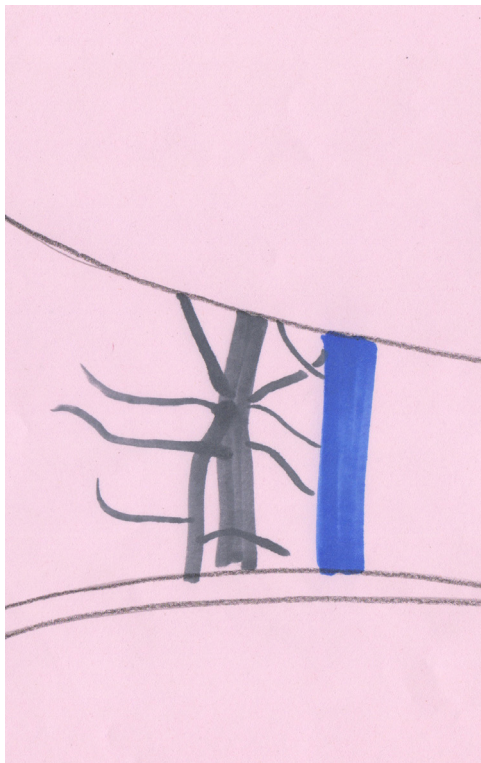


habitat is the space with
the life it contains
inseparable from the
life processes of plants
animals and humans

Edward Haeckel

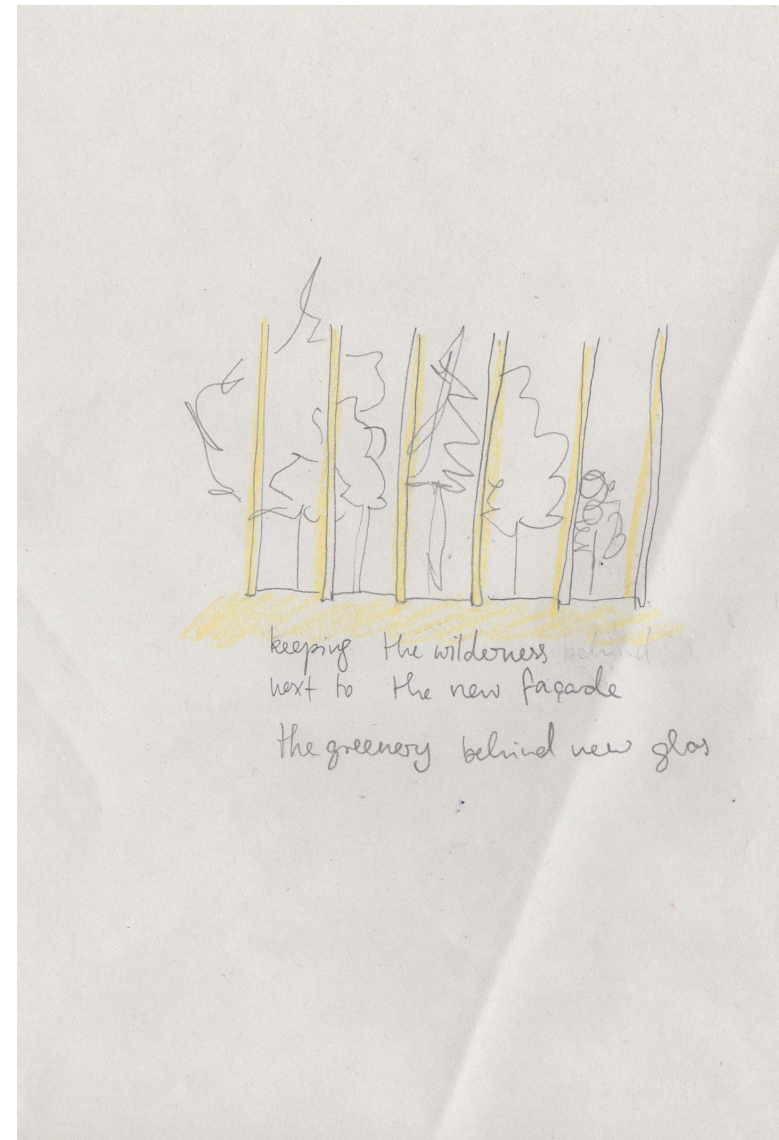
15/05/21





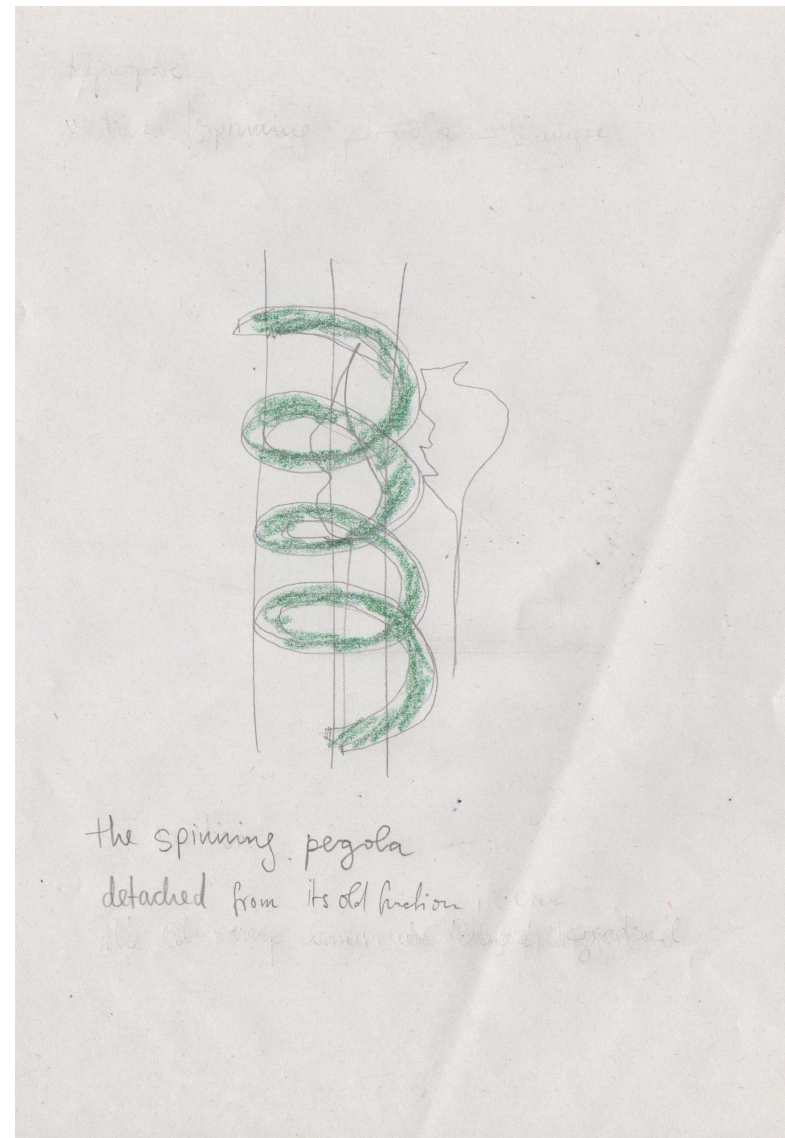


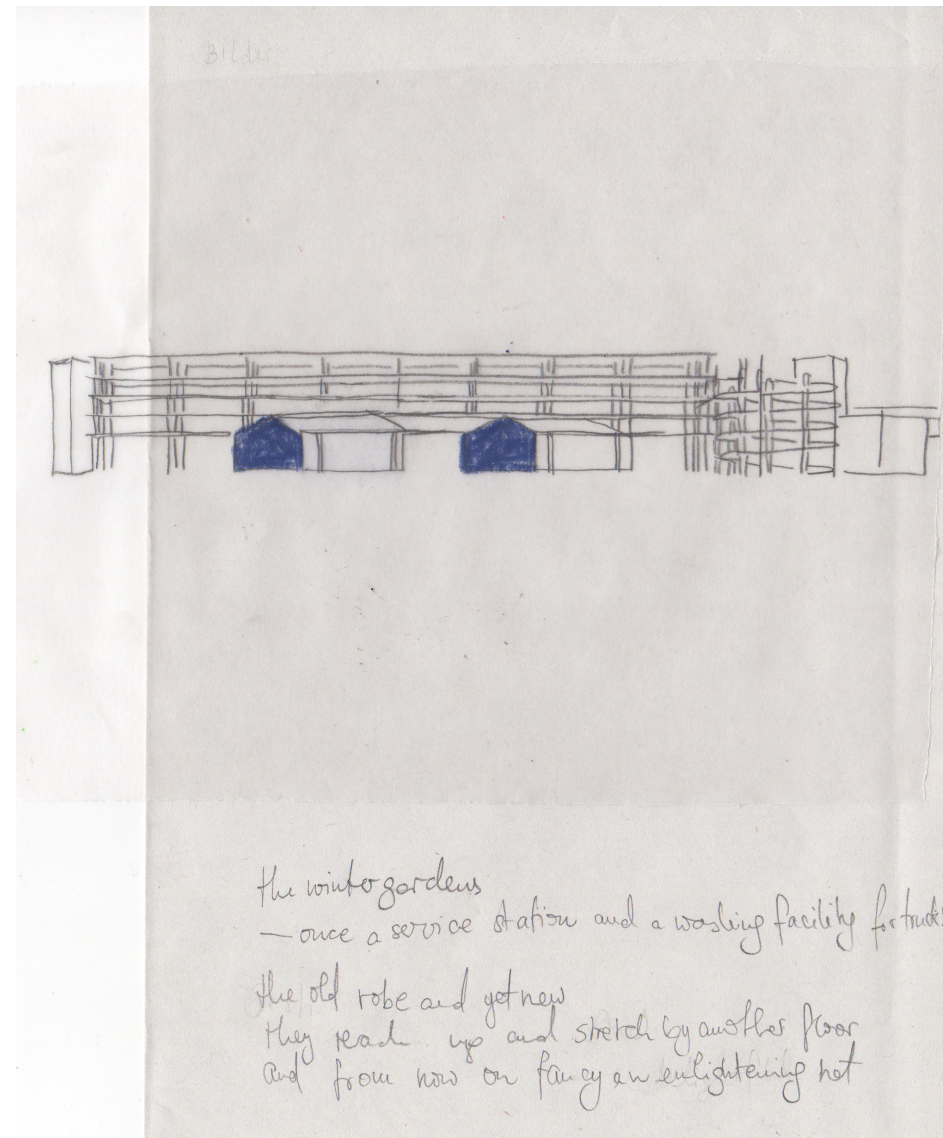
*close entanglement of
structures and nature*



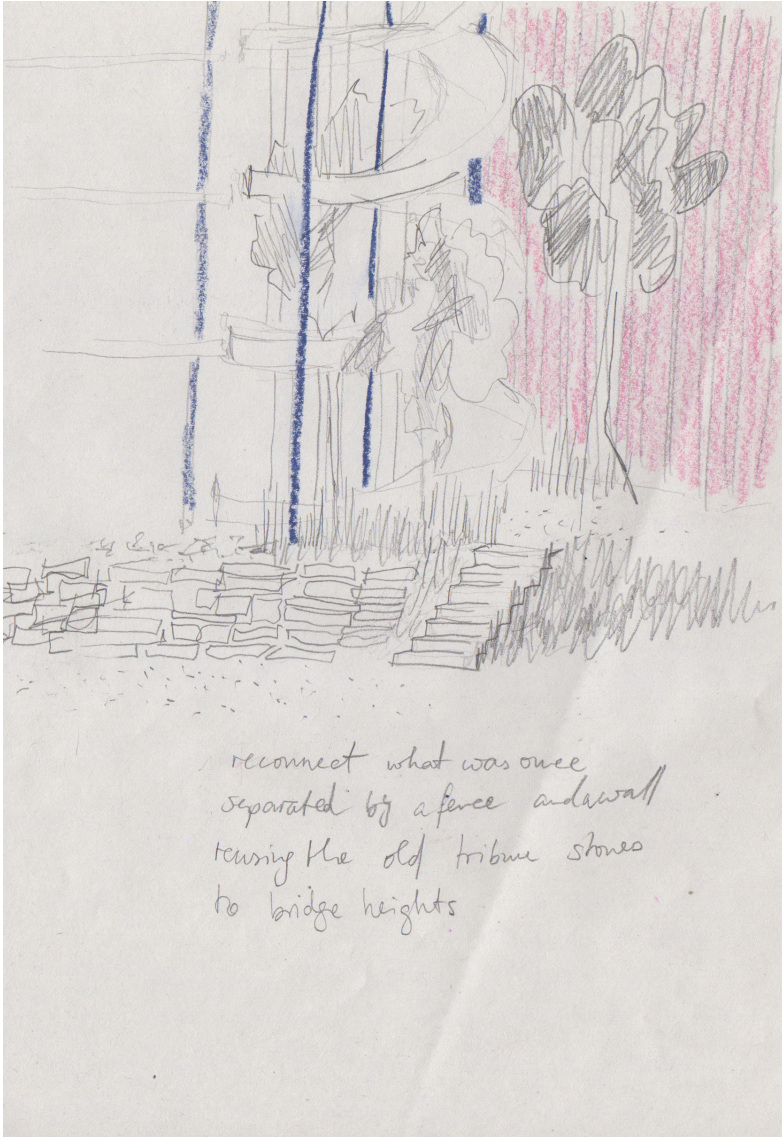


attach and re-adjust

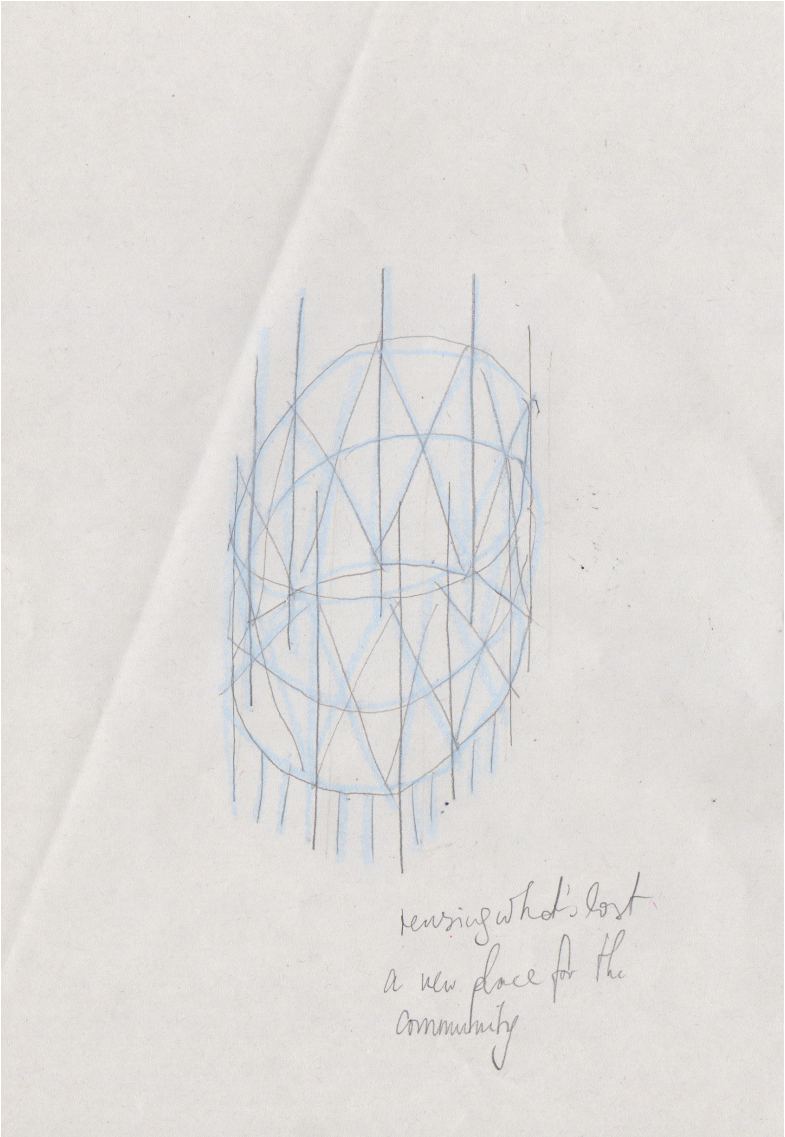




attach and re-adjust

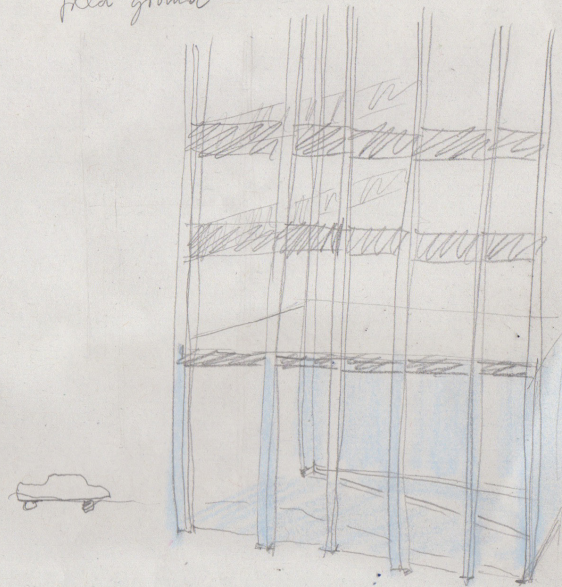


add what will be lost aside

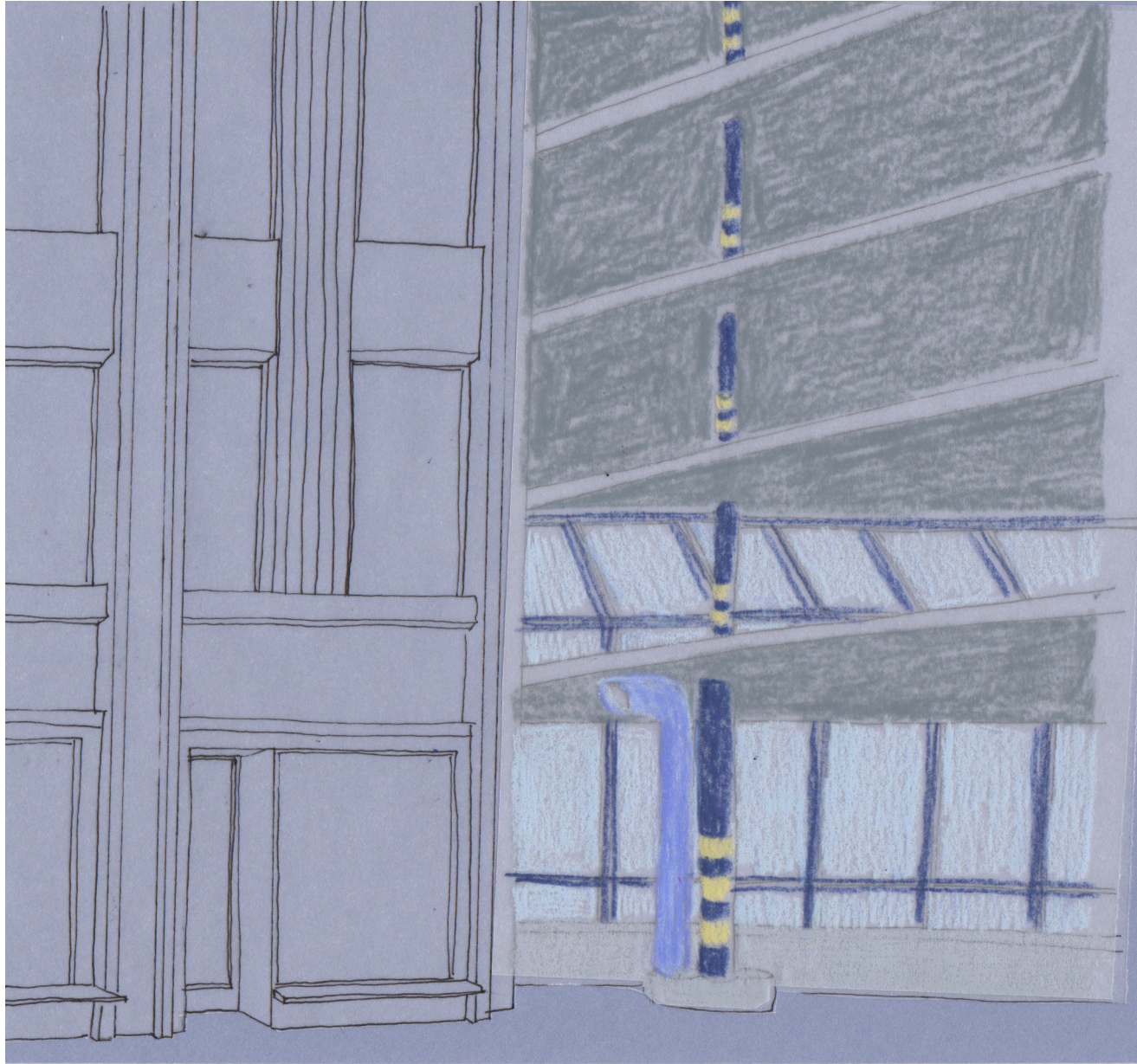


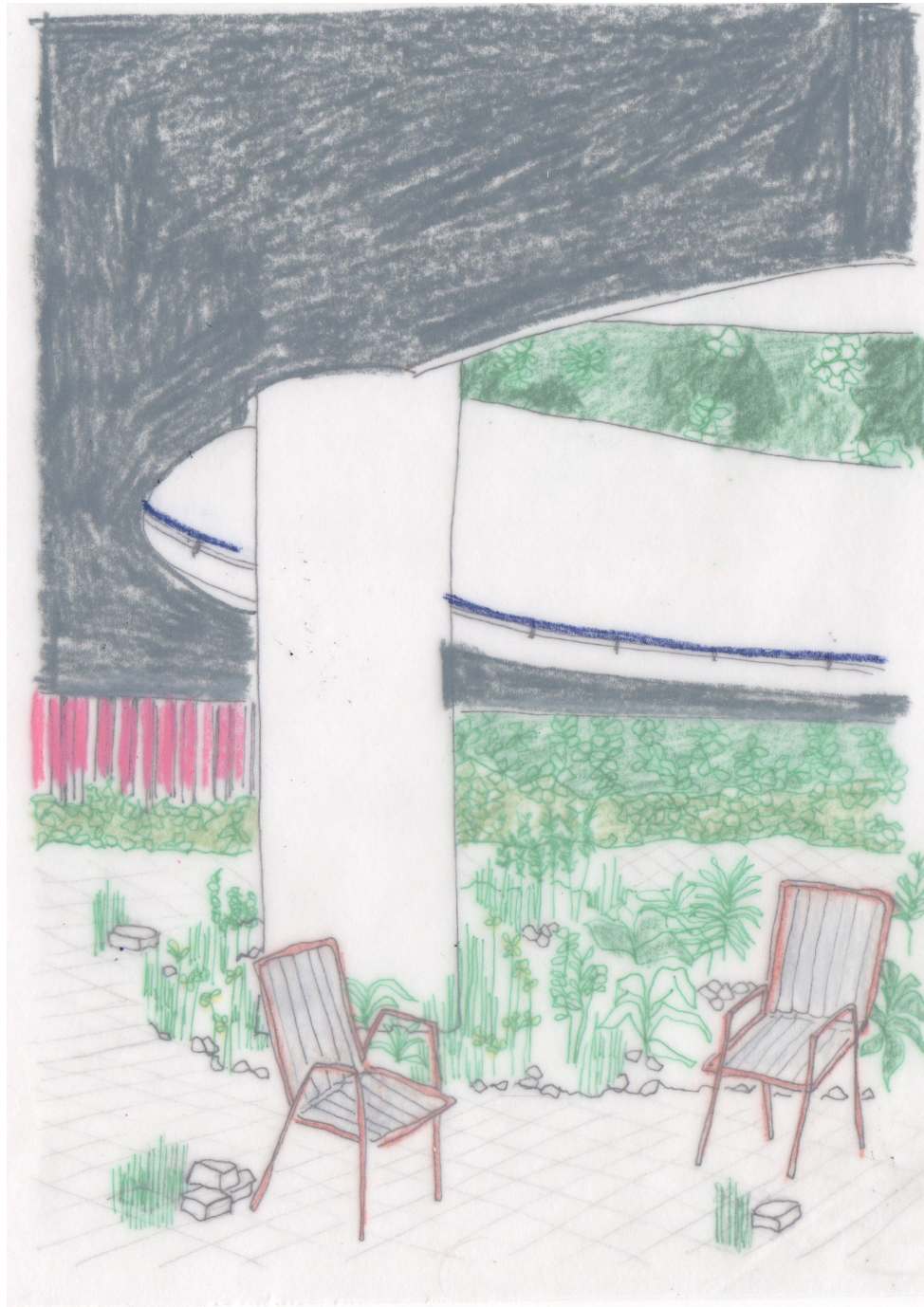
add what will be lost aside

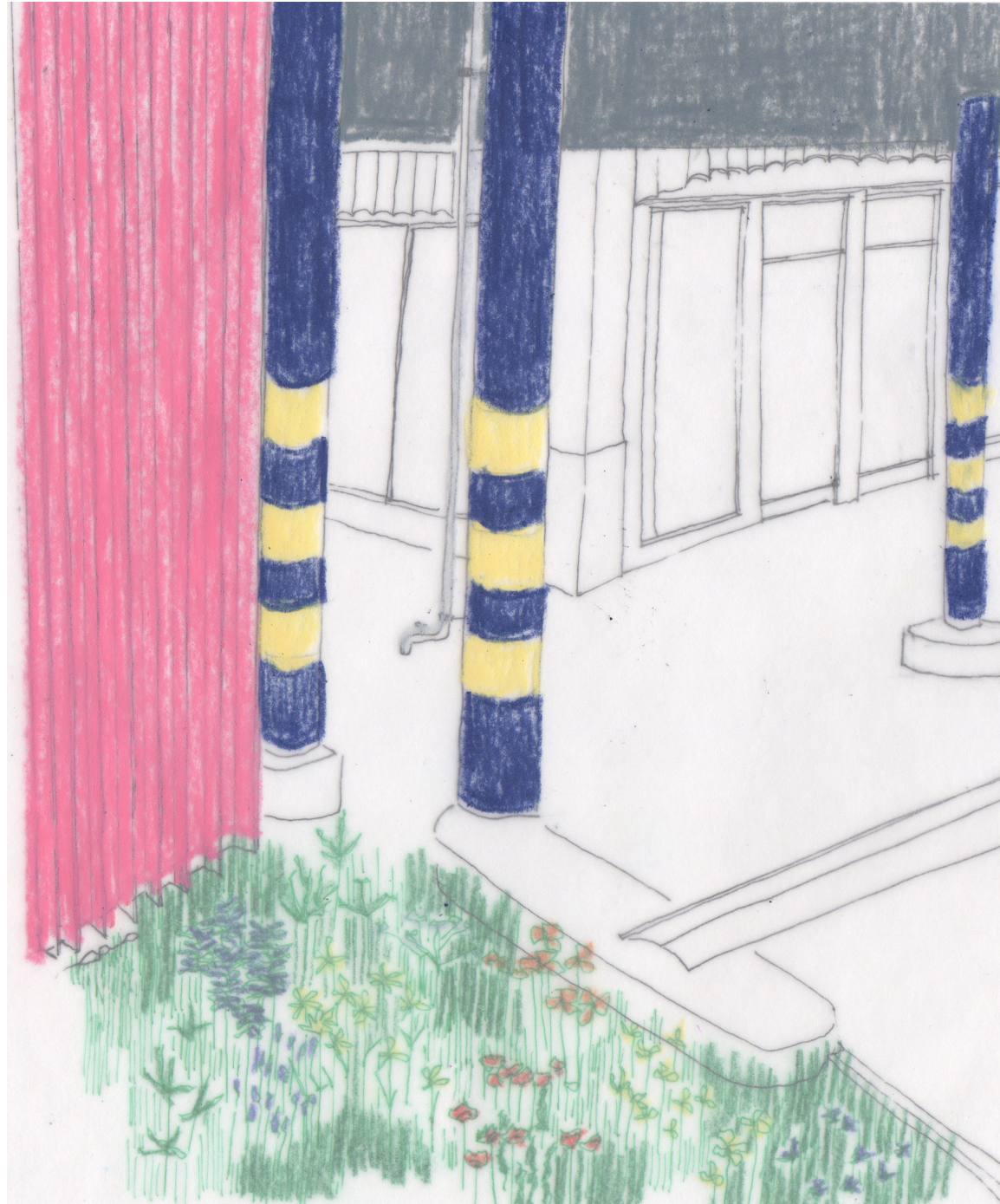
Rethinks the explained
but detached
fixed ground



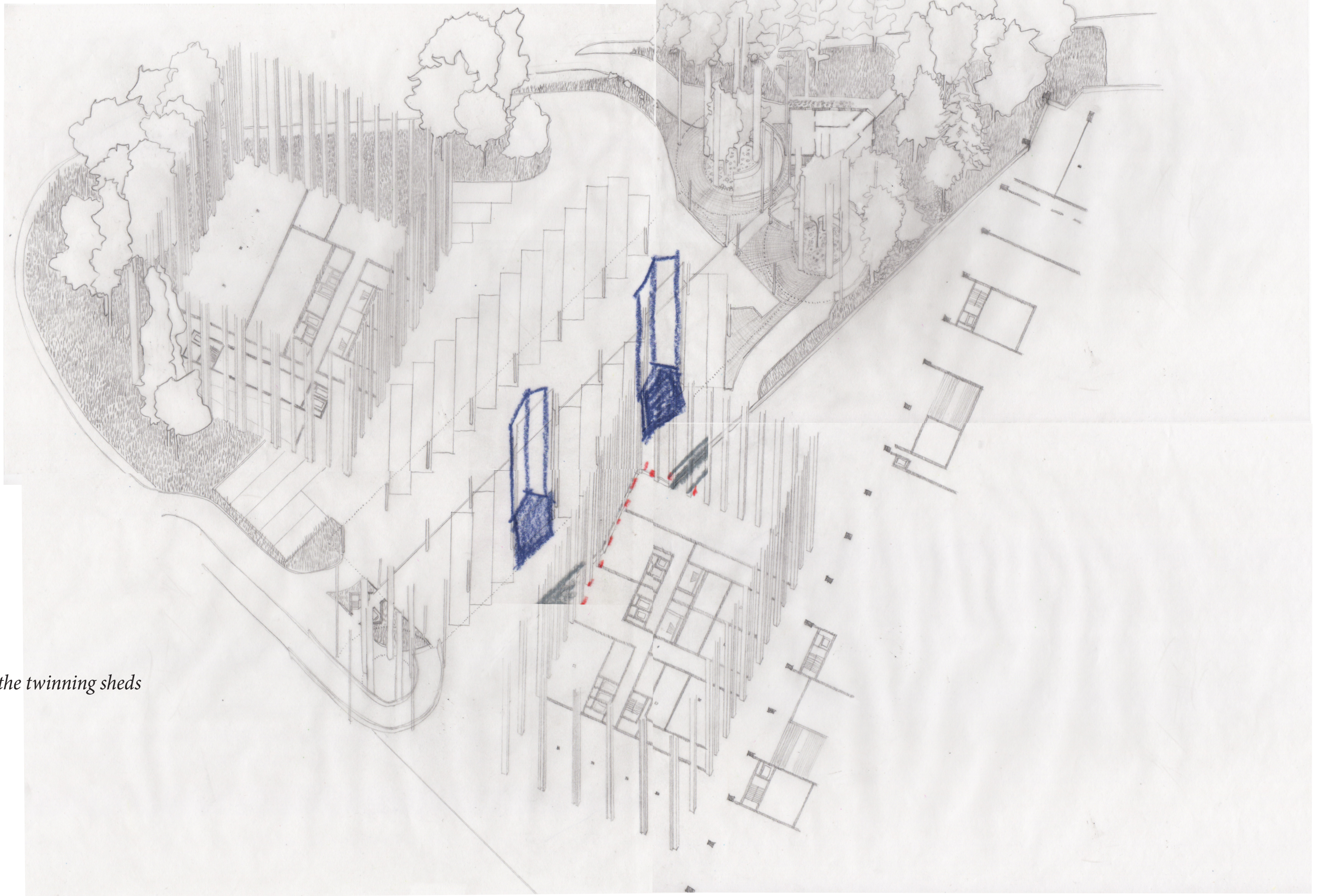
re-assume what turned into a blank spot in the unbuilt





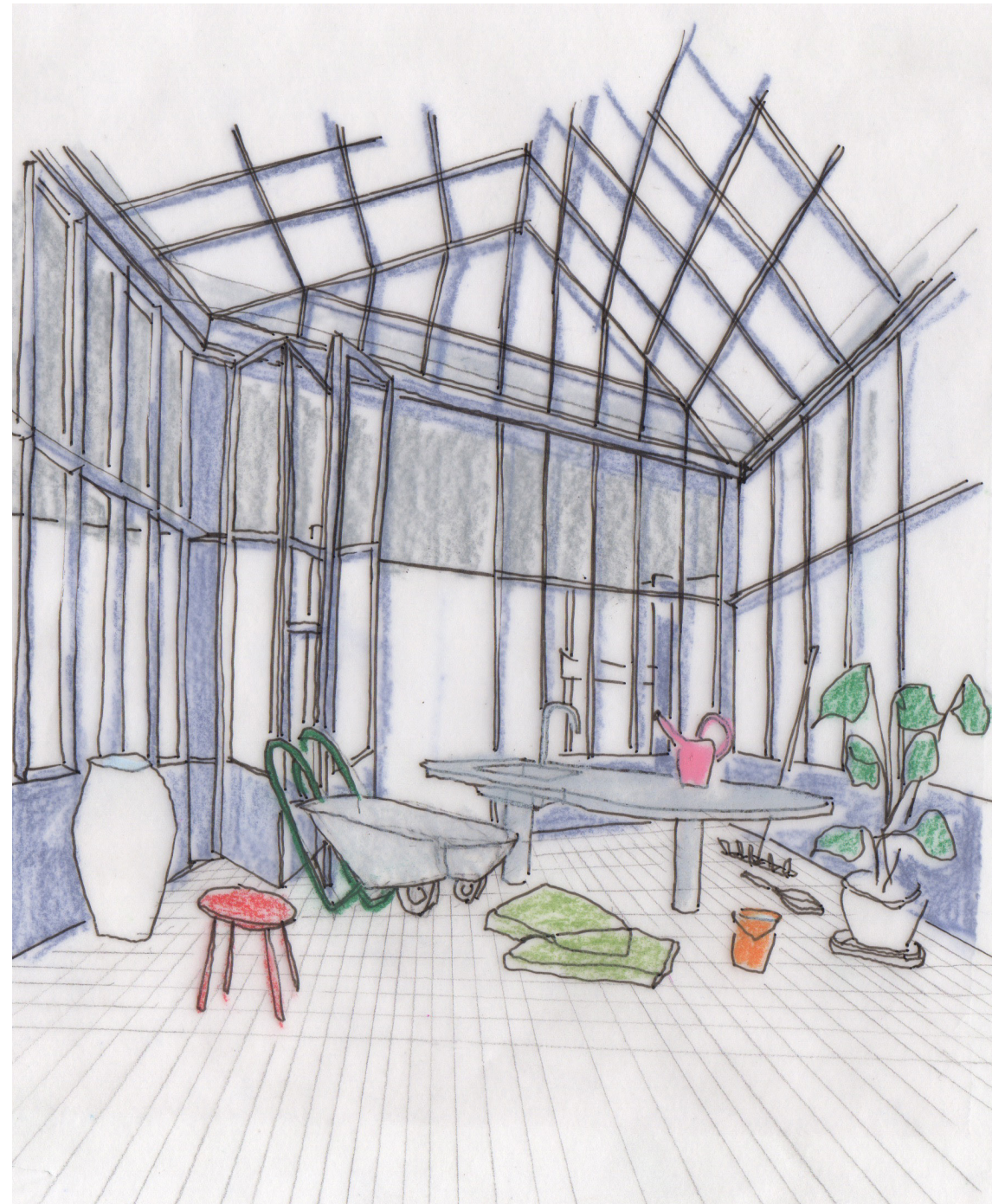
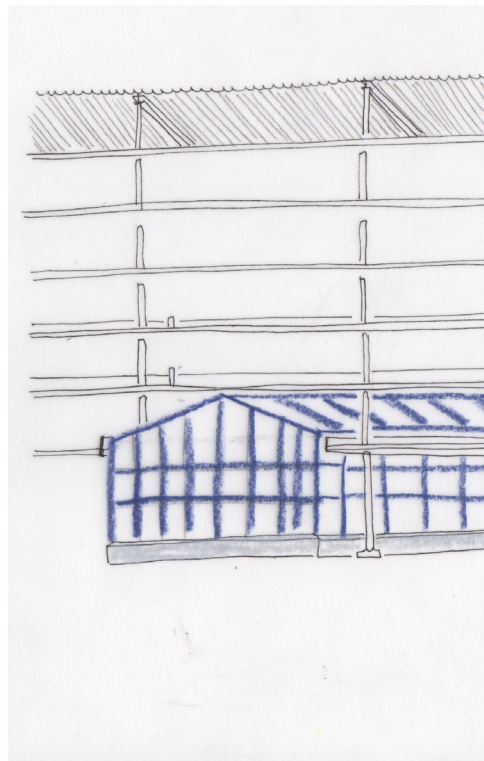


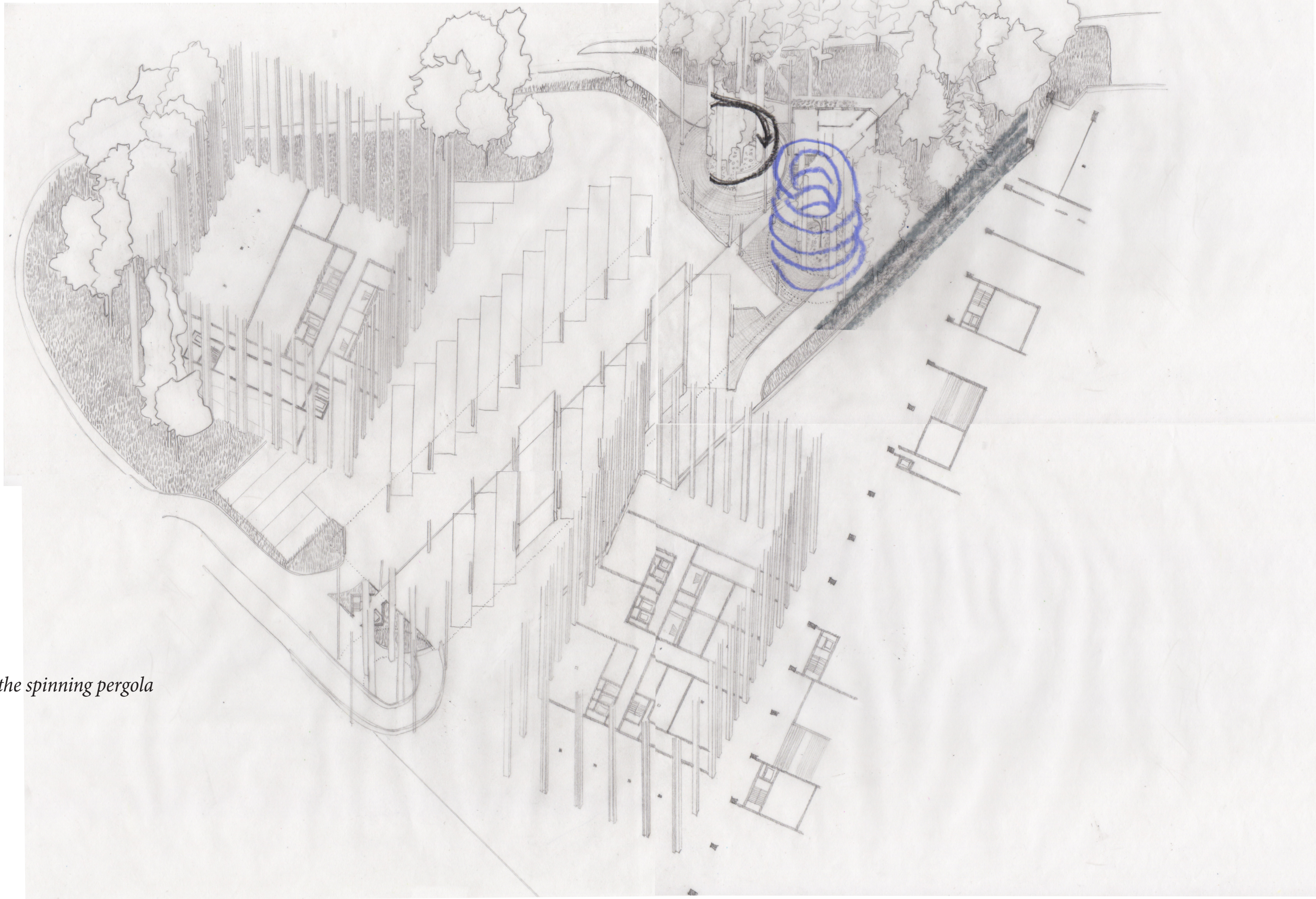




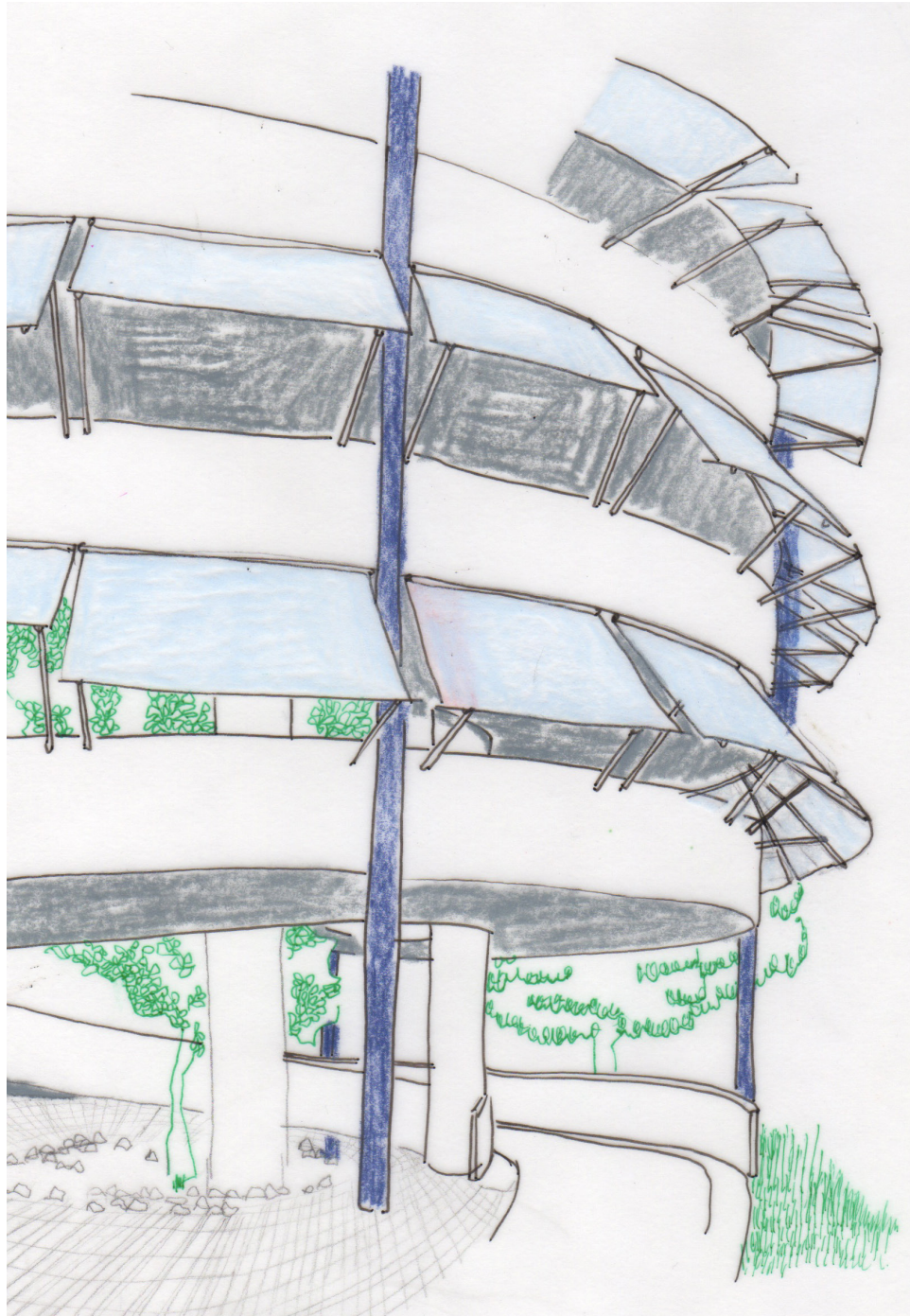
the twinning sheds



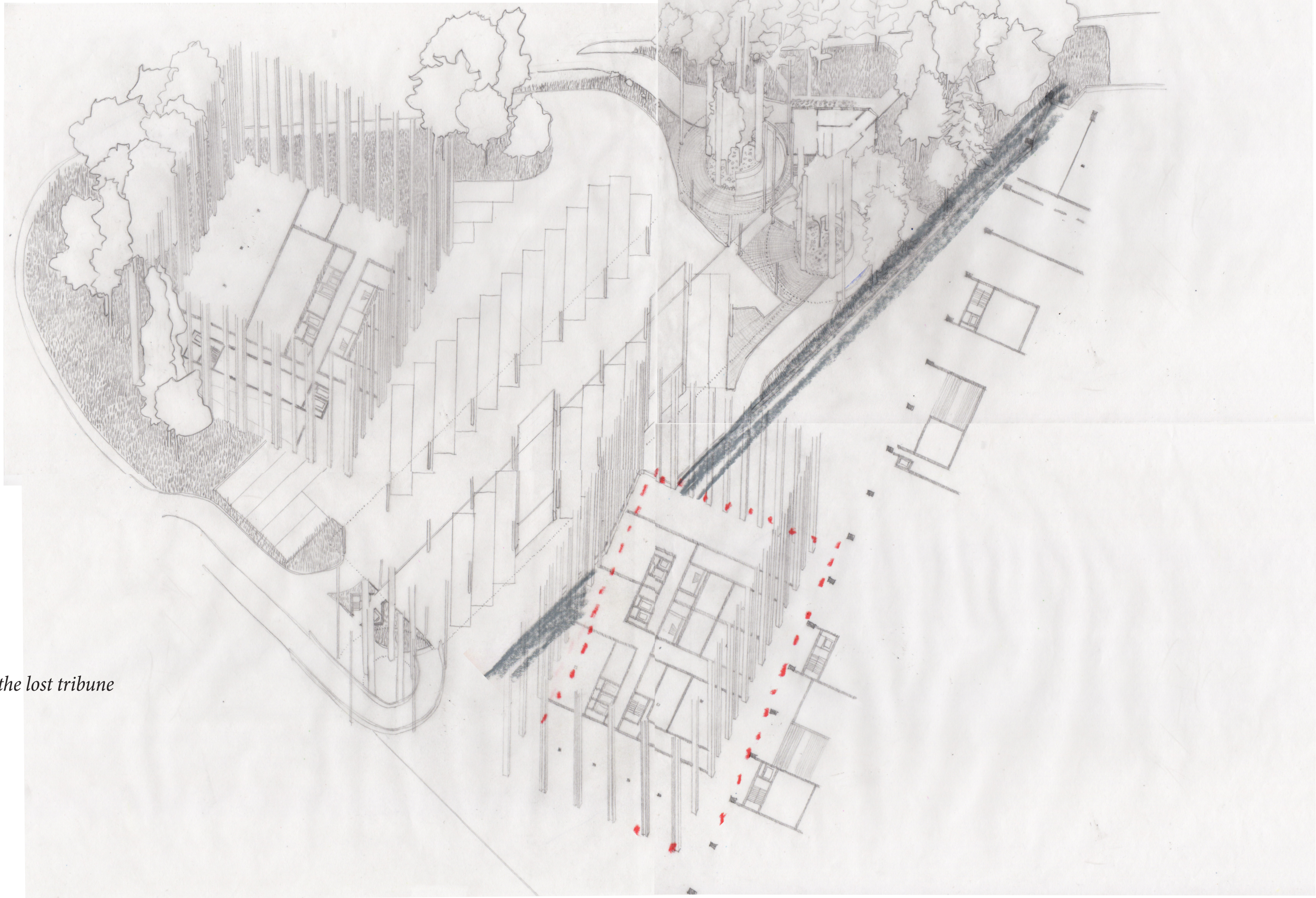




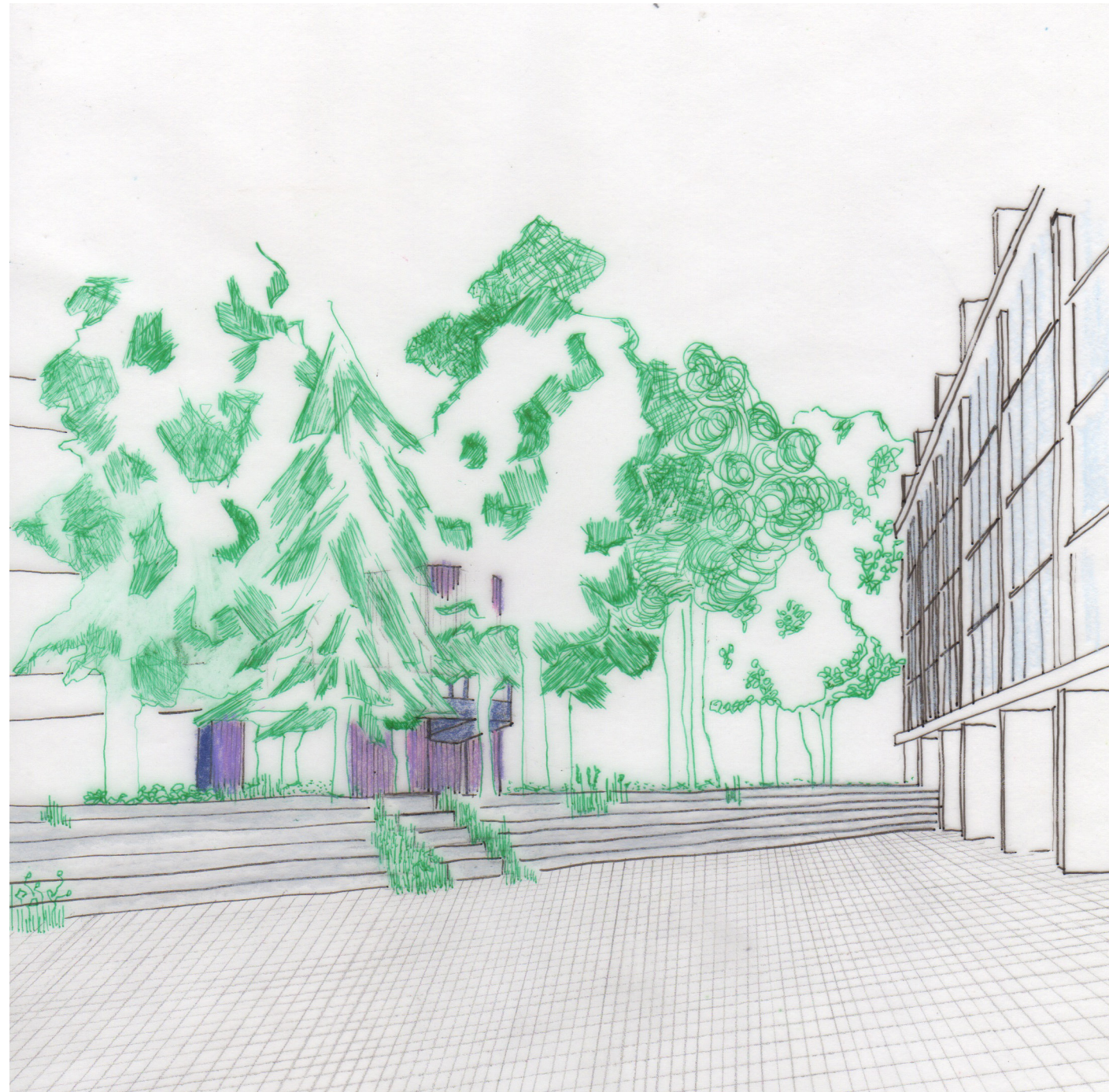
the spinning pergola

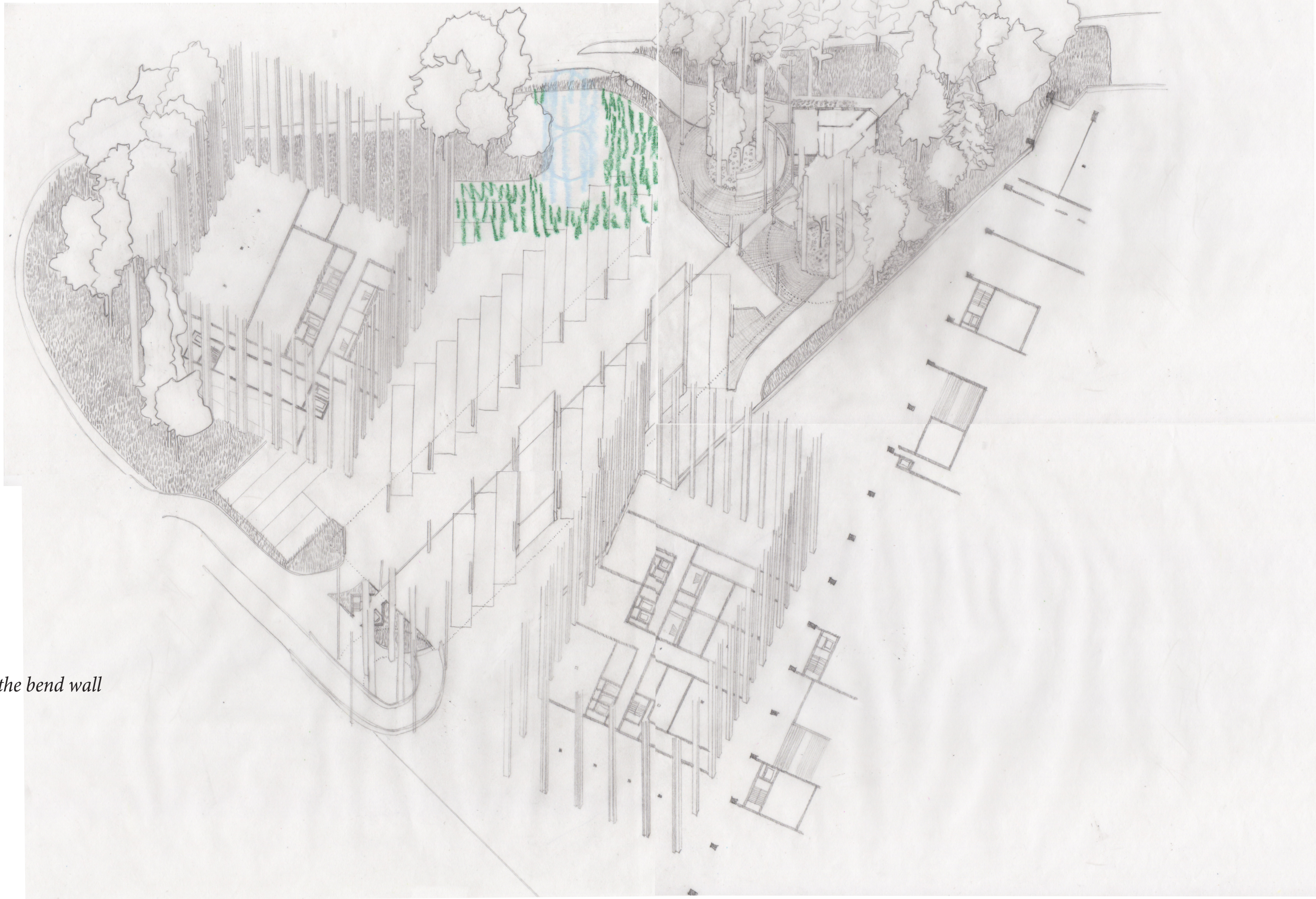






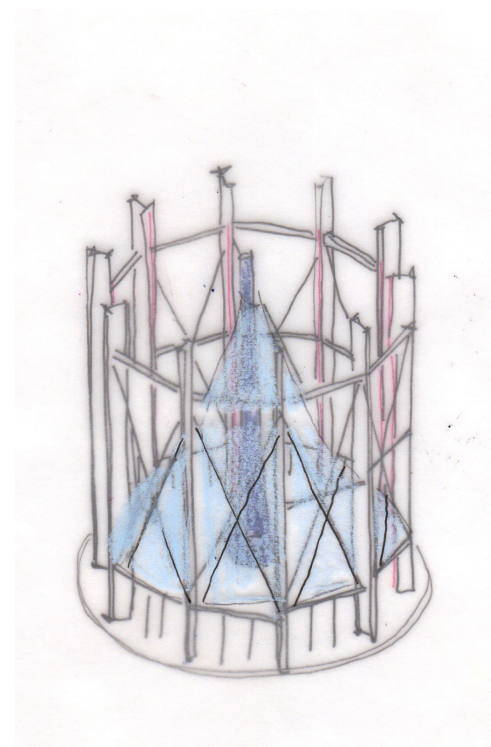
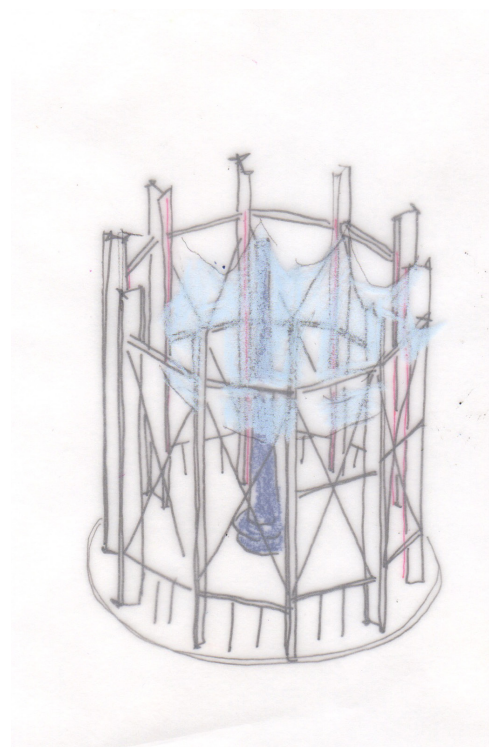
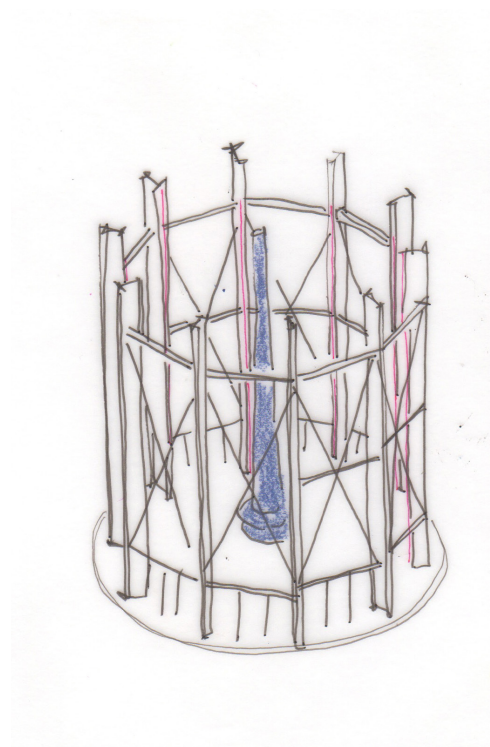
the lost tribune

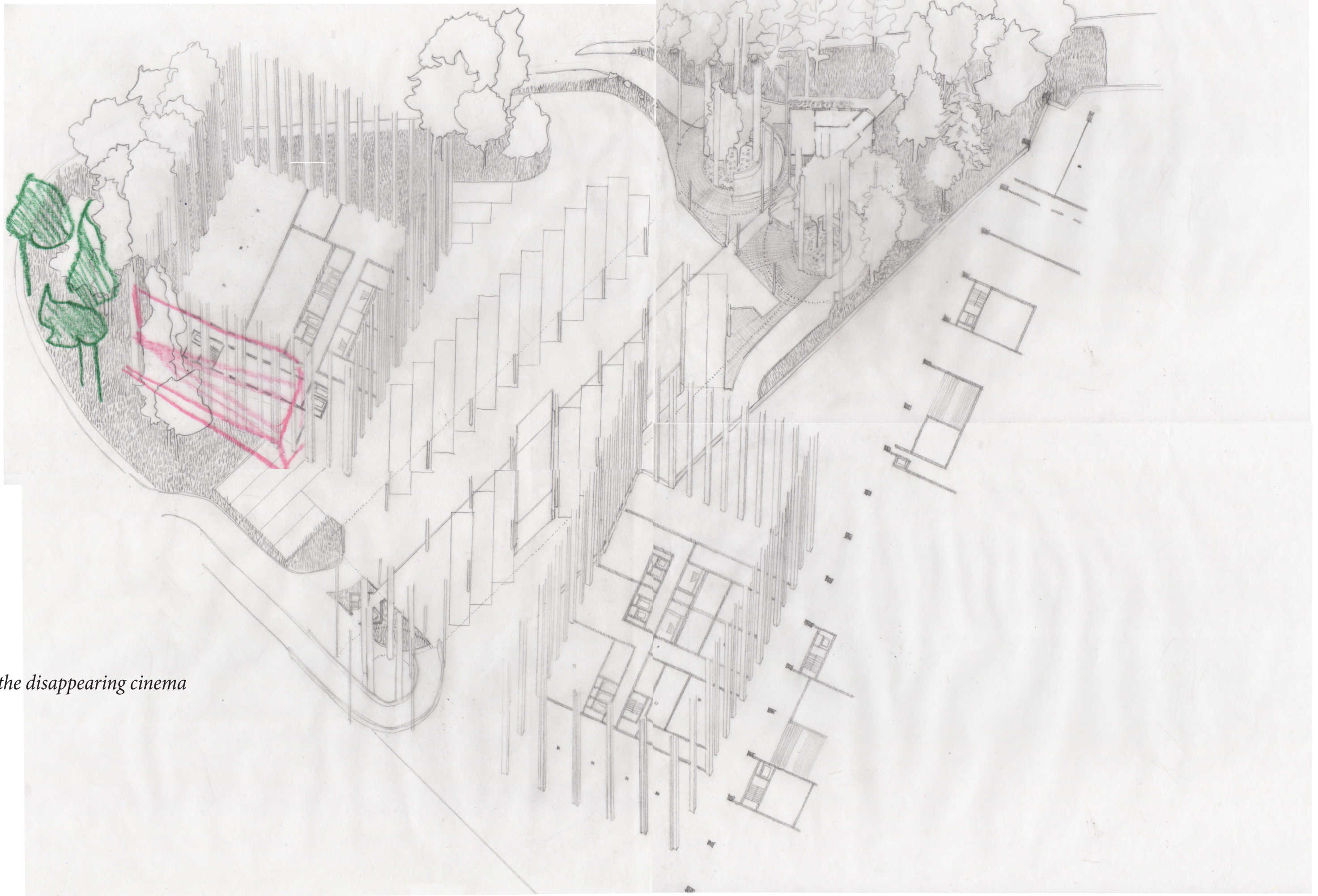




the bend wall







the disappearing cinema



