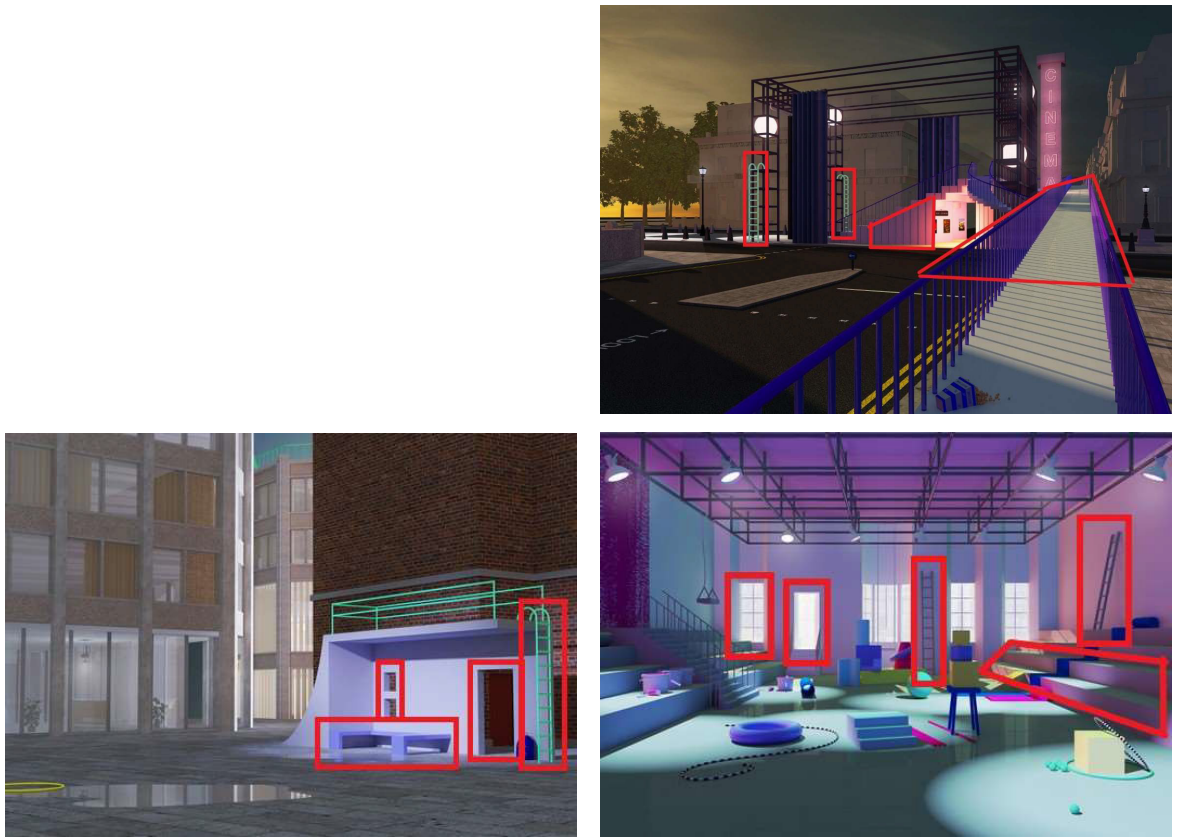


Student's Exhibition Project

Non-Binary architecture through language

Laura Balanzategui Schmit

HS2021



Architecture can, by design, be gendered. The common points on Rozenberg's renderings were framed in red to highlight them. The bench, the ladder, the wall, the windows, the door and the ramp are all common to these 3 pictures. All these elements are architectural consistuant parts which make architecture non-binary in her renderings. This are neutral and non-binary spaces. This a manner to reeducate language.

But we have to keep in mind that these spaces can seem masculine to some and very female to others. For this drawing I chose to take the form of the basic house so that everybody can recognize it at the first sight without ulterior motives. With words, therefore vocabulary I created a house that contains the mayor themes of my thesis. The terms that had been written in big are the most important ones and which come back all the time. The more little ones are those that complete the big term to understand its function just by looking at them. Language, Gender, Neutrality, Space and Architecture are the big themes represented here. Architecture is constituted of words and vocabulary and has a language specifically designed for it.