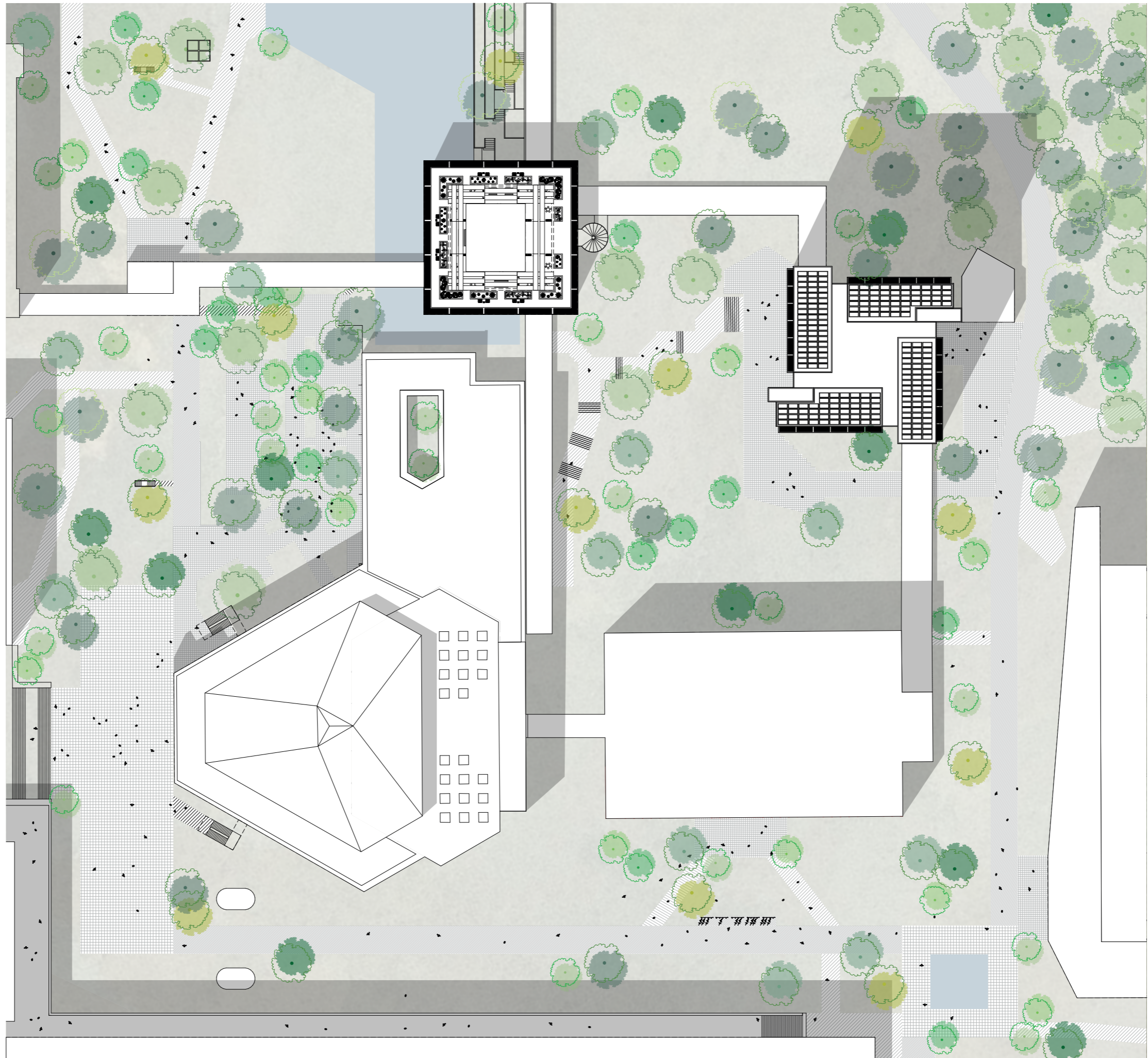


Professur für Architektur und Konstruktion  
Annette **Gigon** Mike **Guyer**

**MAURIZIO MÄTZLER**

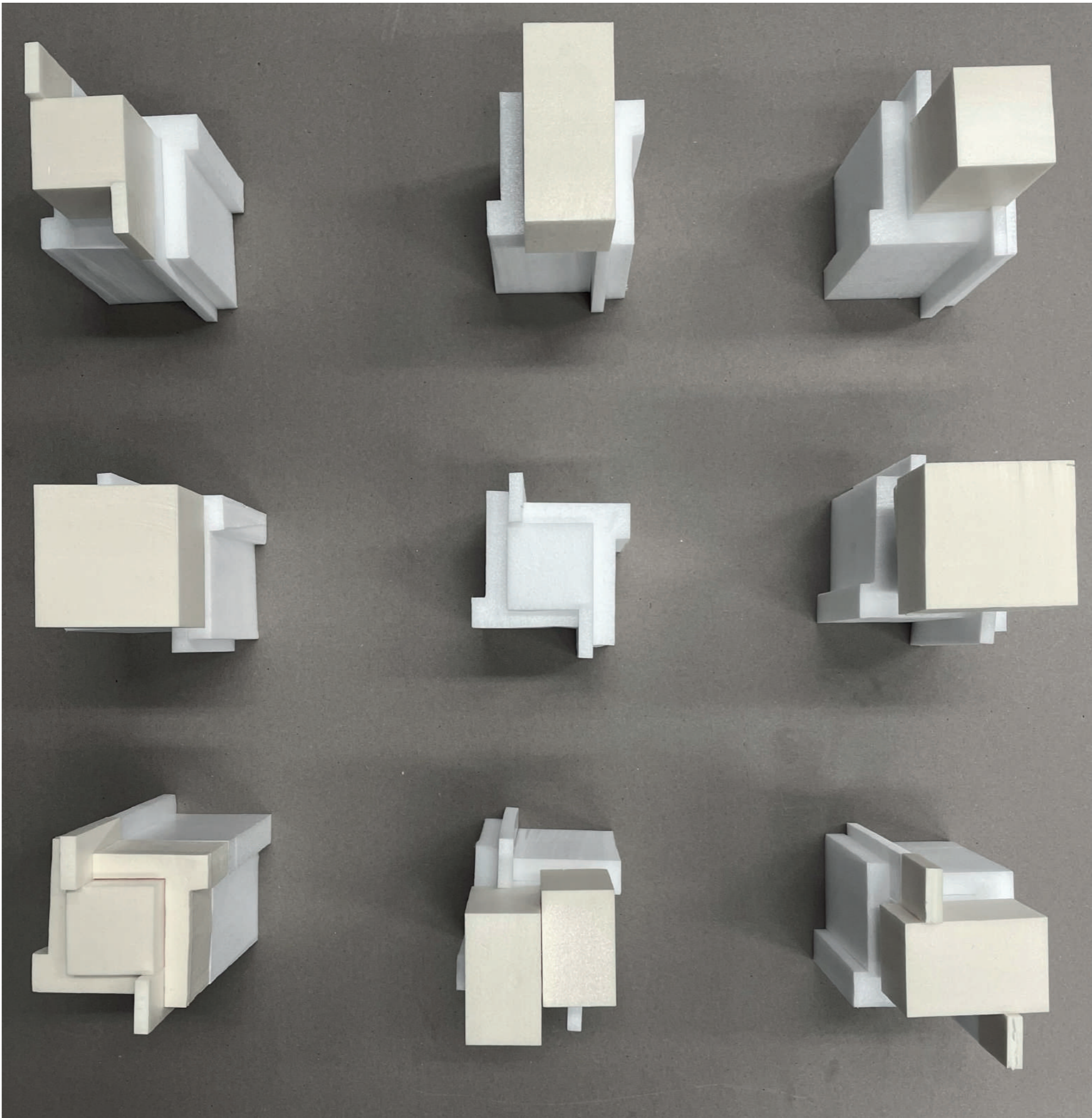


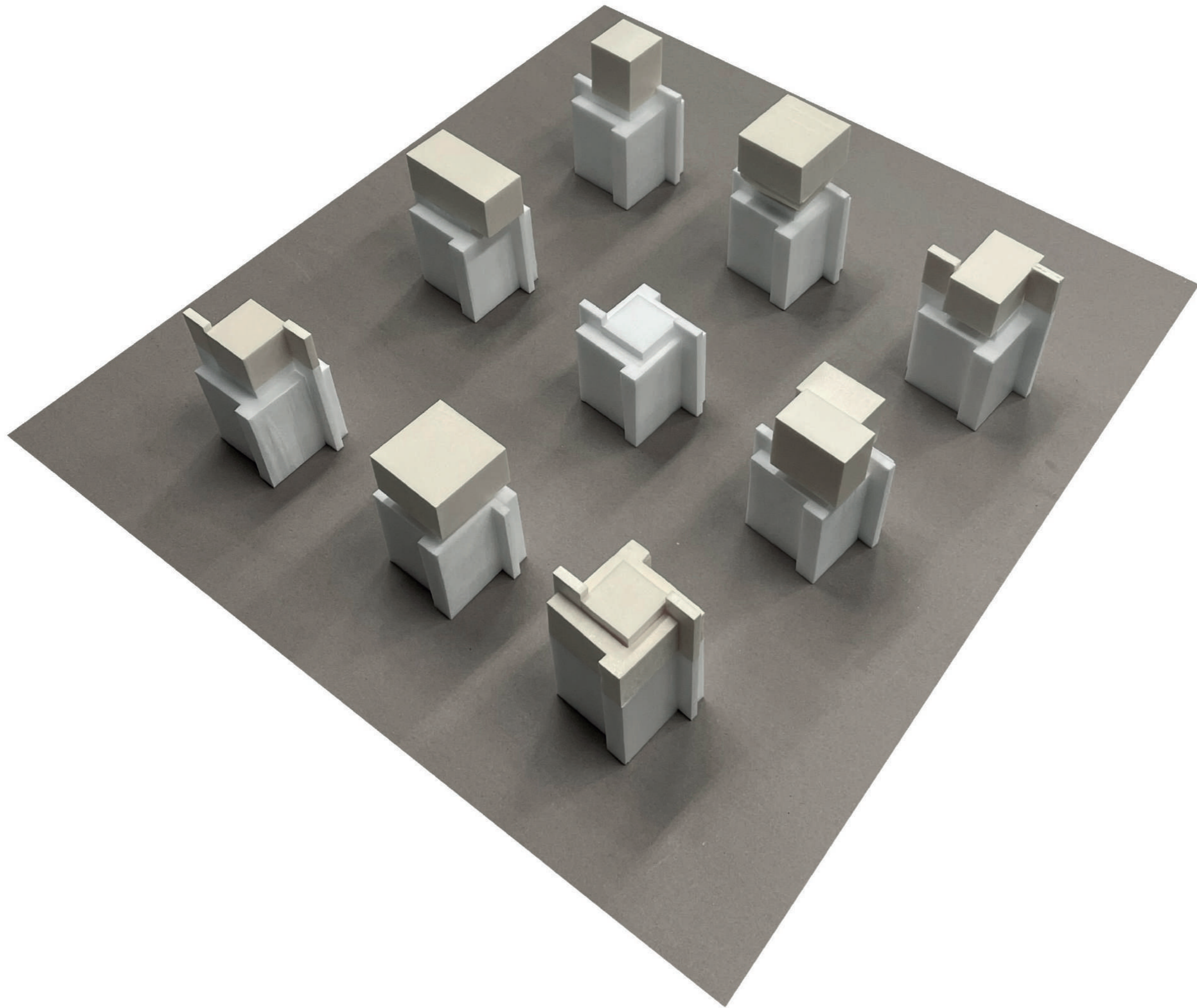
FS 2023  
master thesis

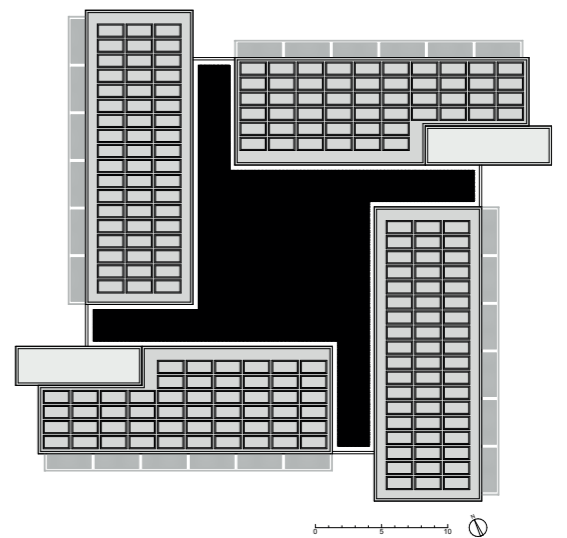
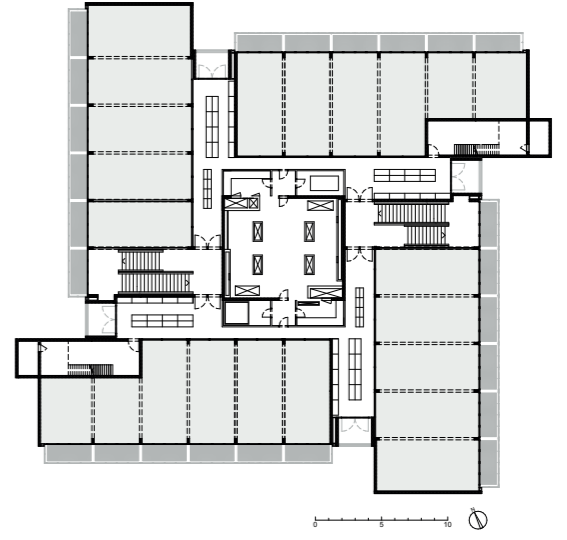
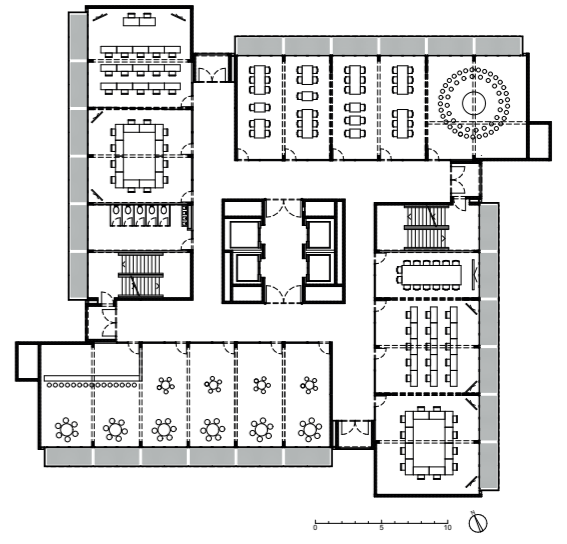
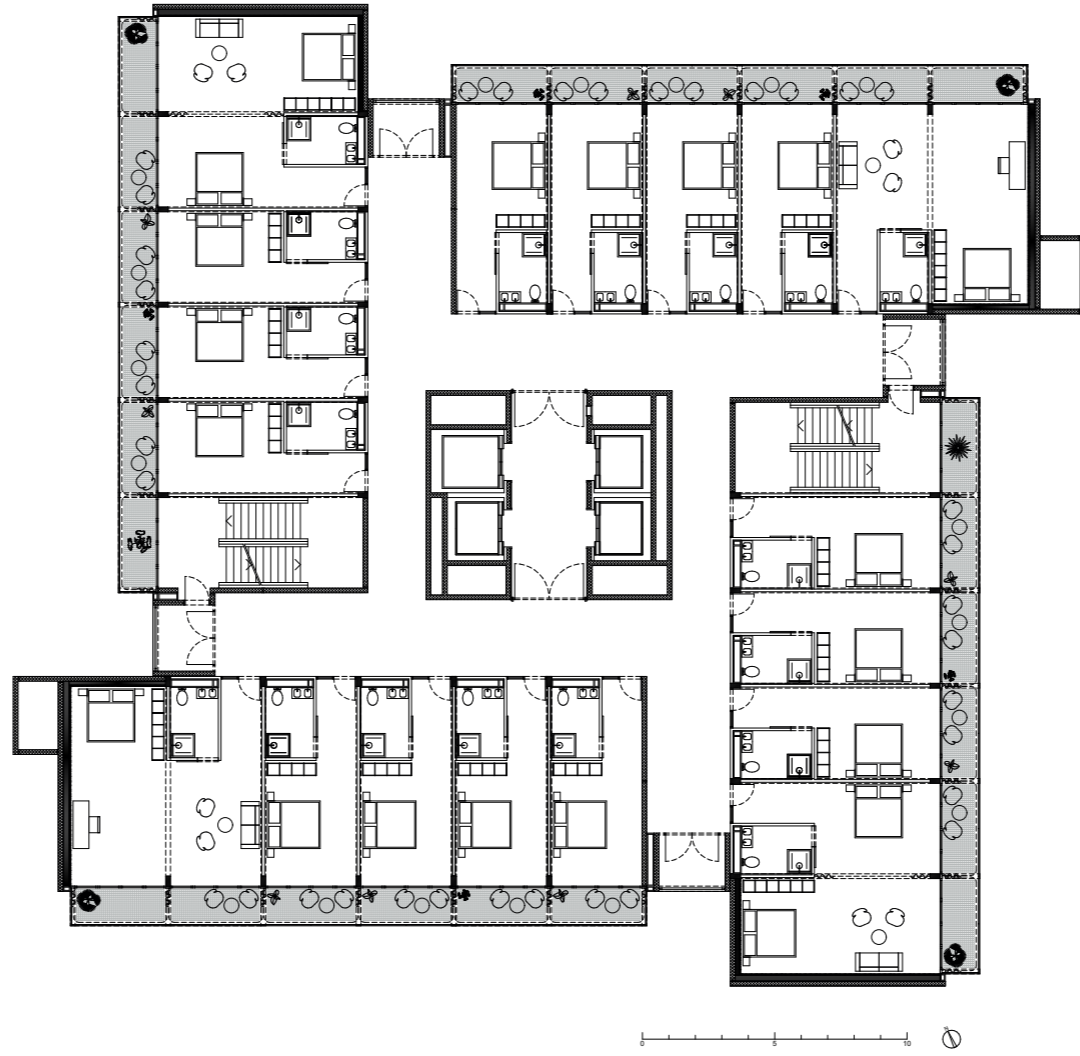
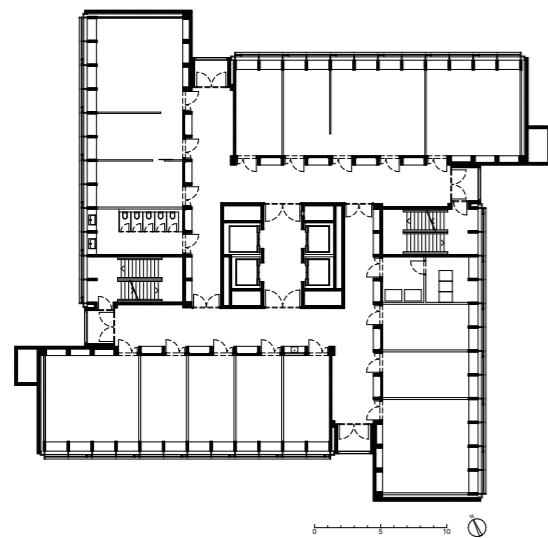
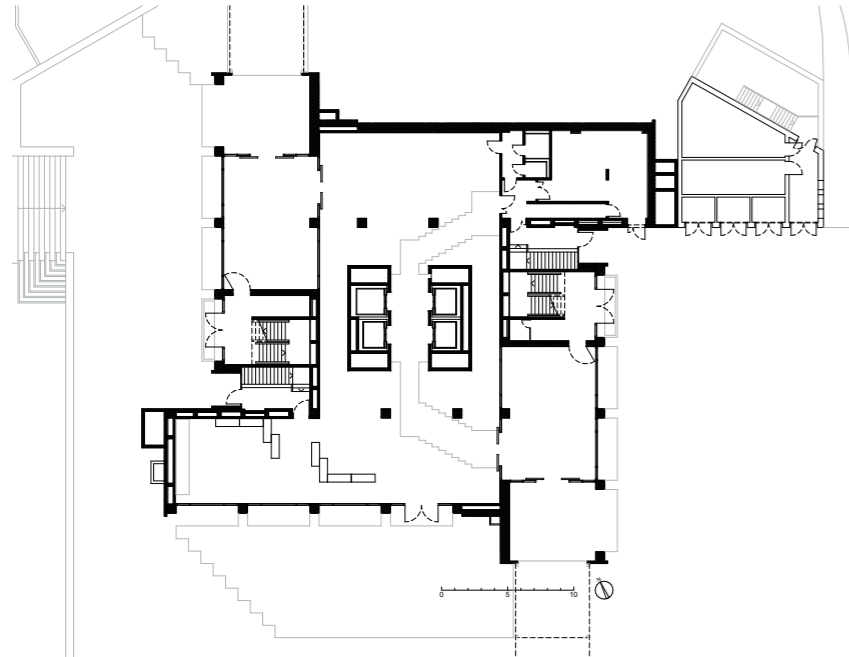
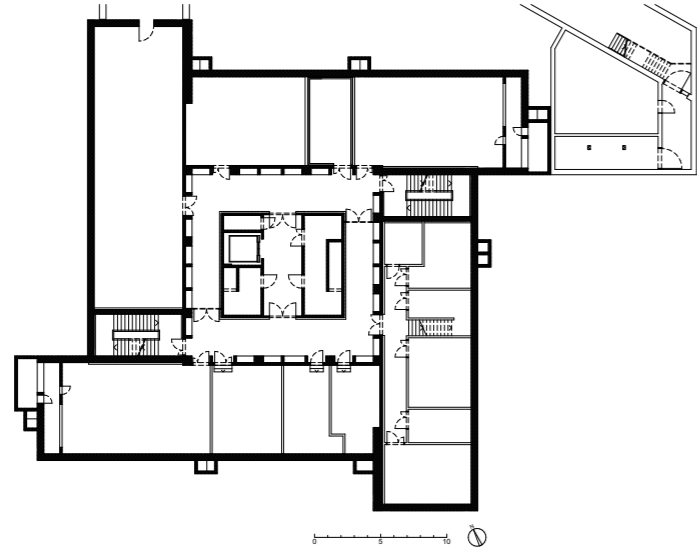


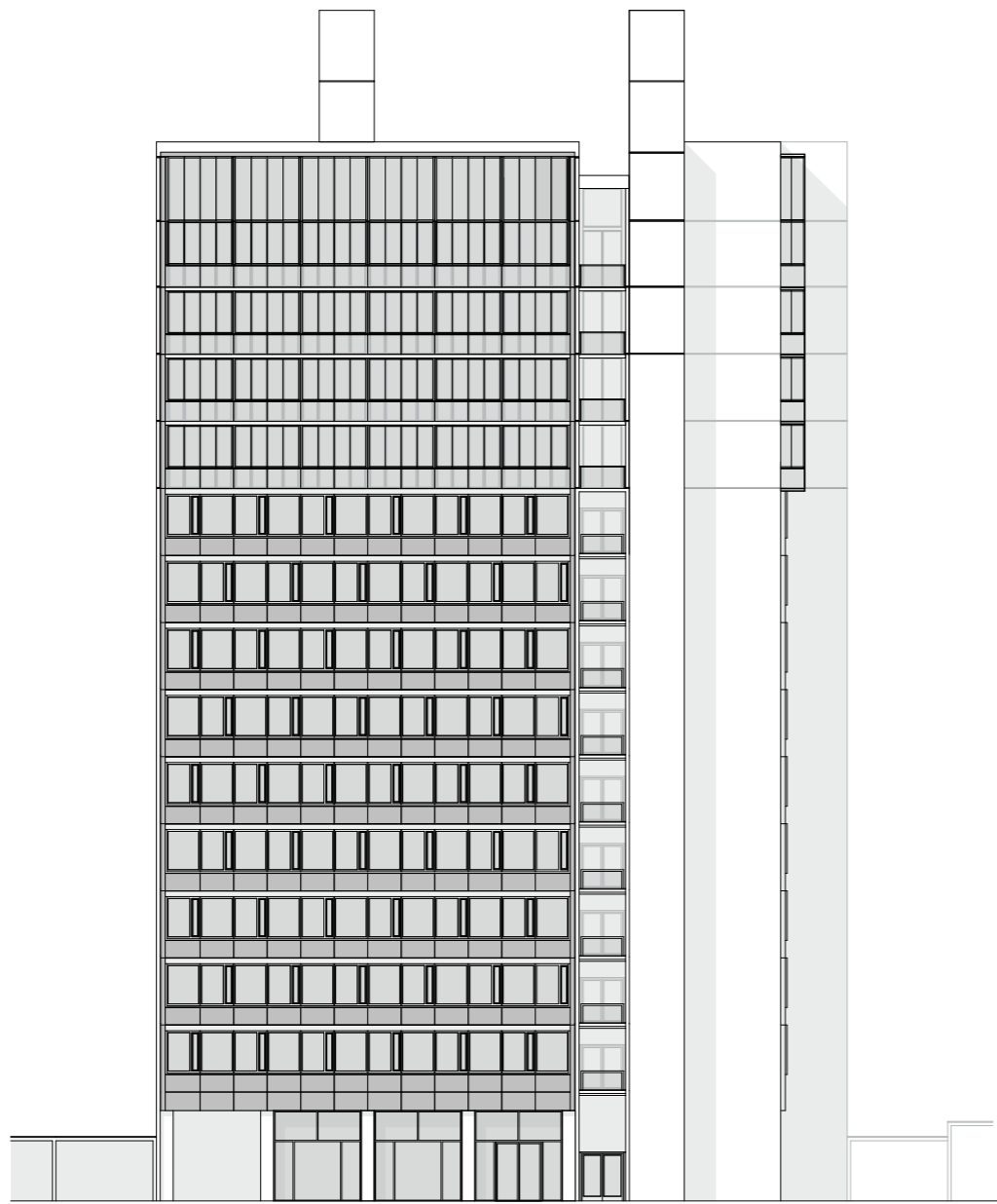




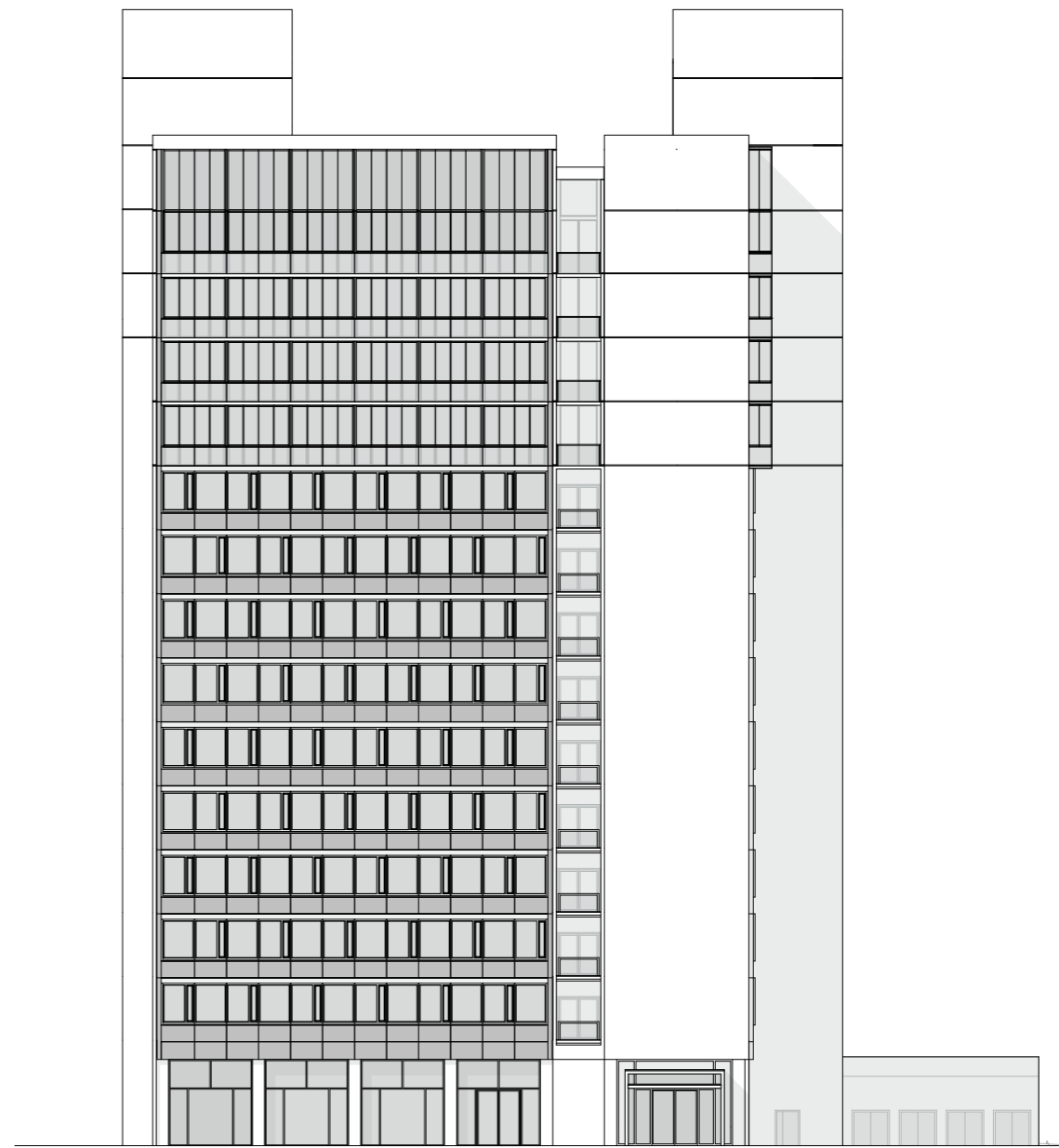








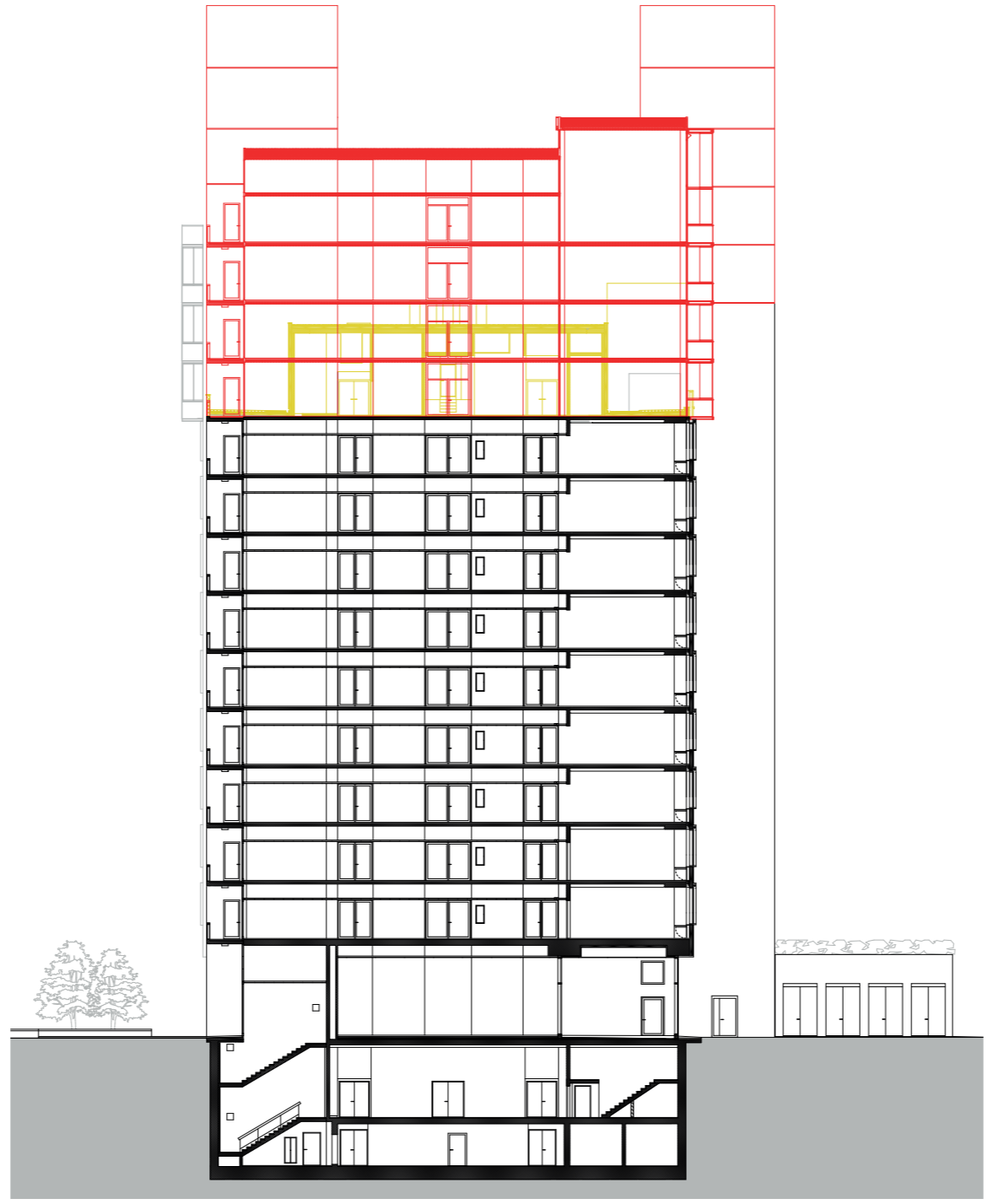
0 5 10

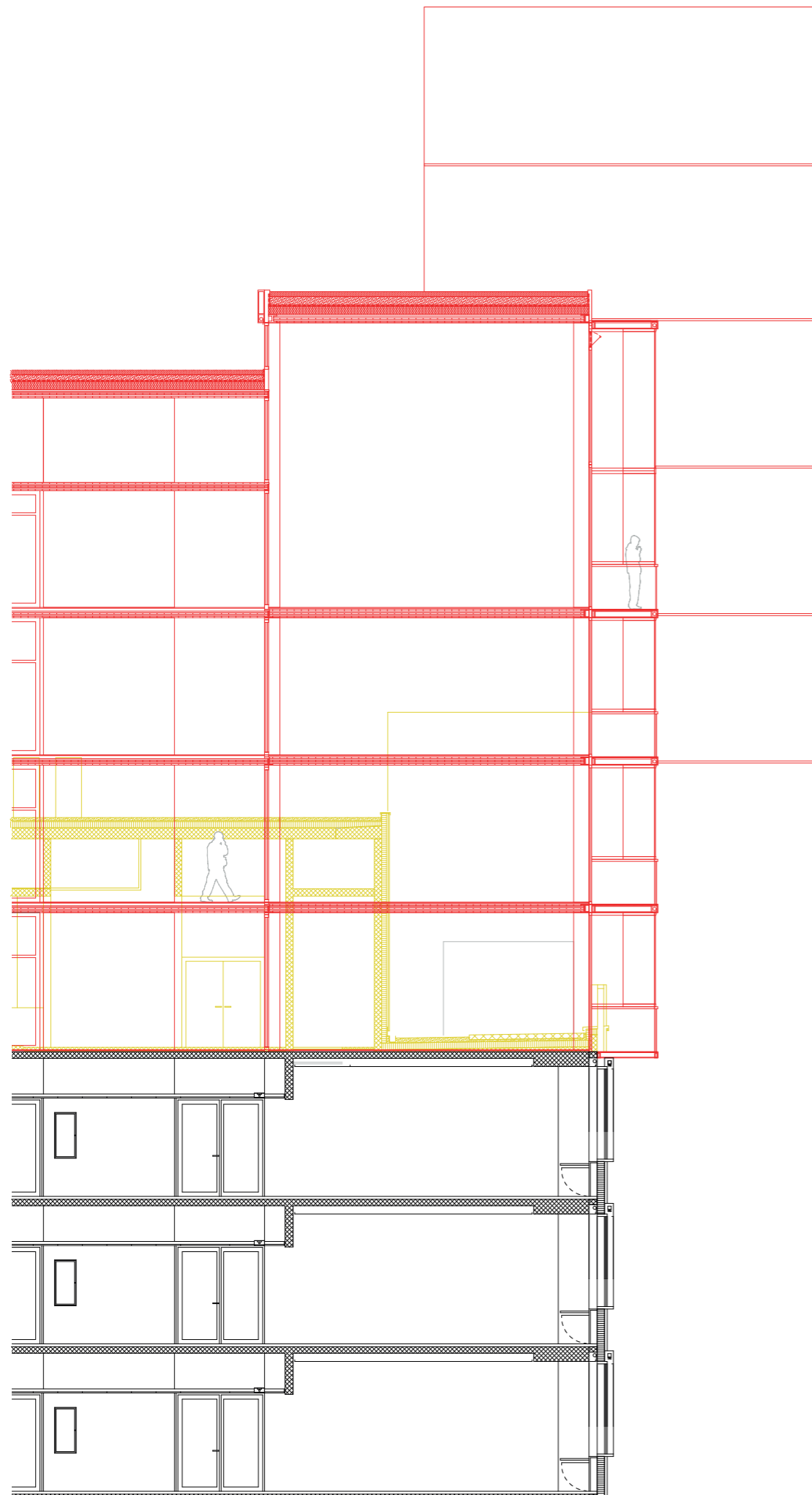


0 5 10



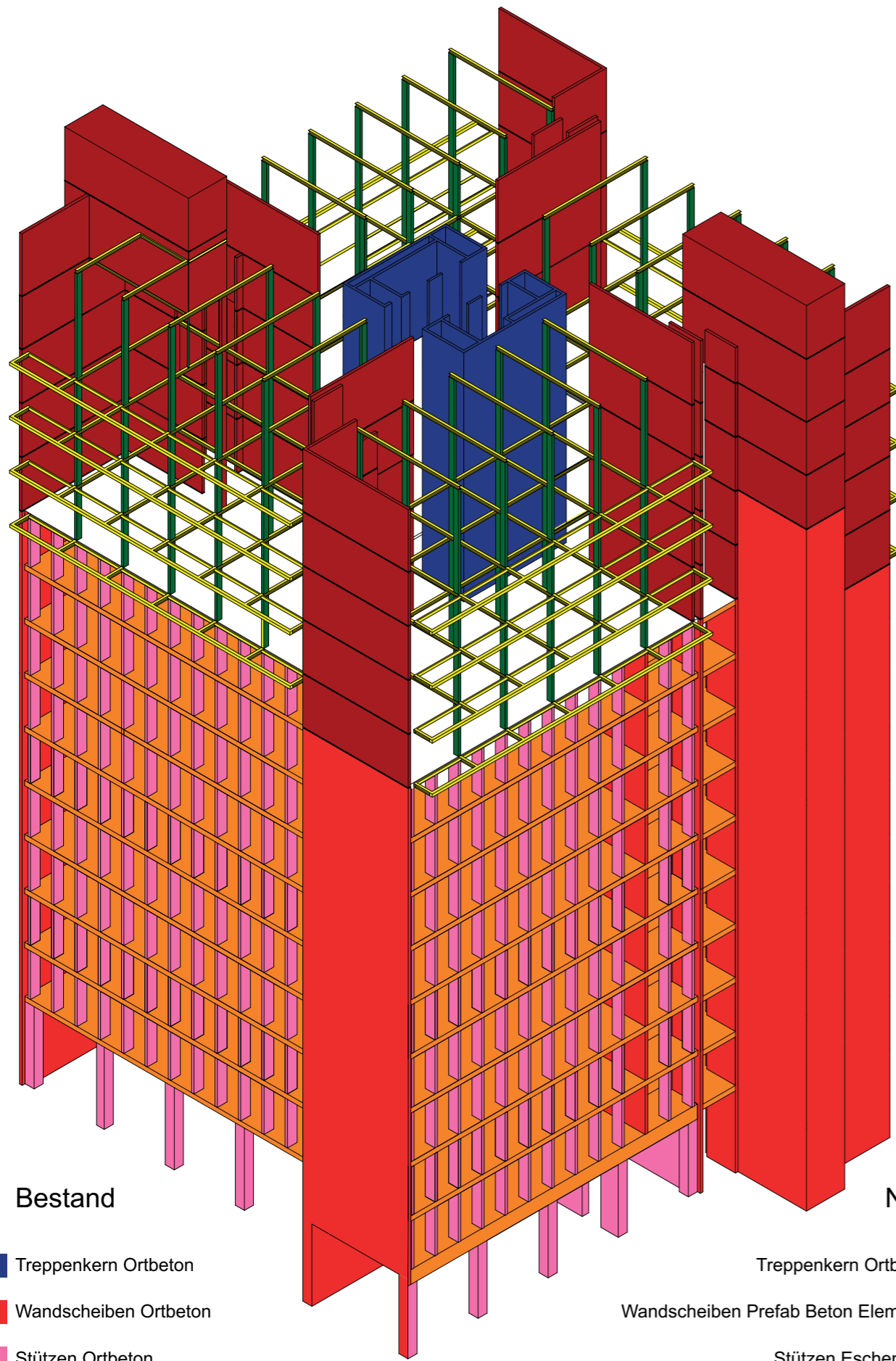
U





0 5



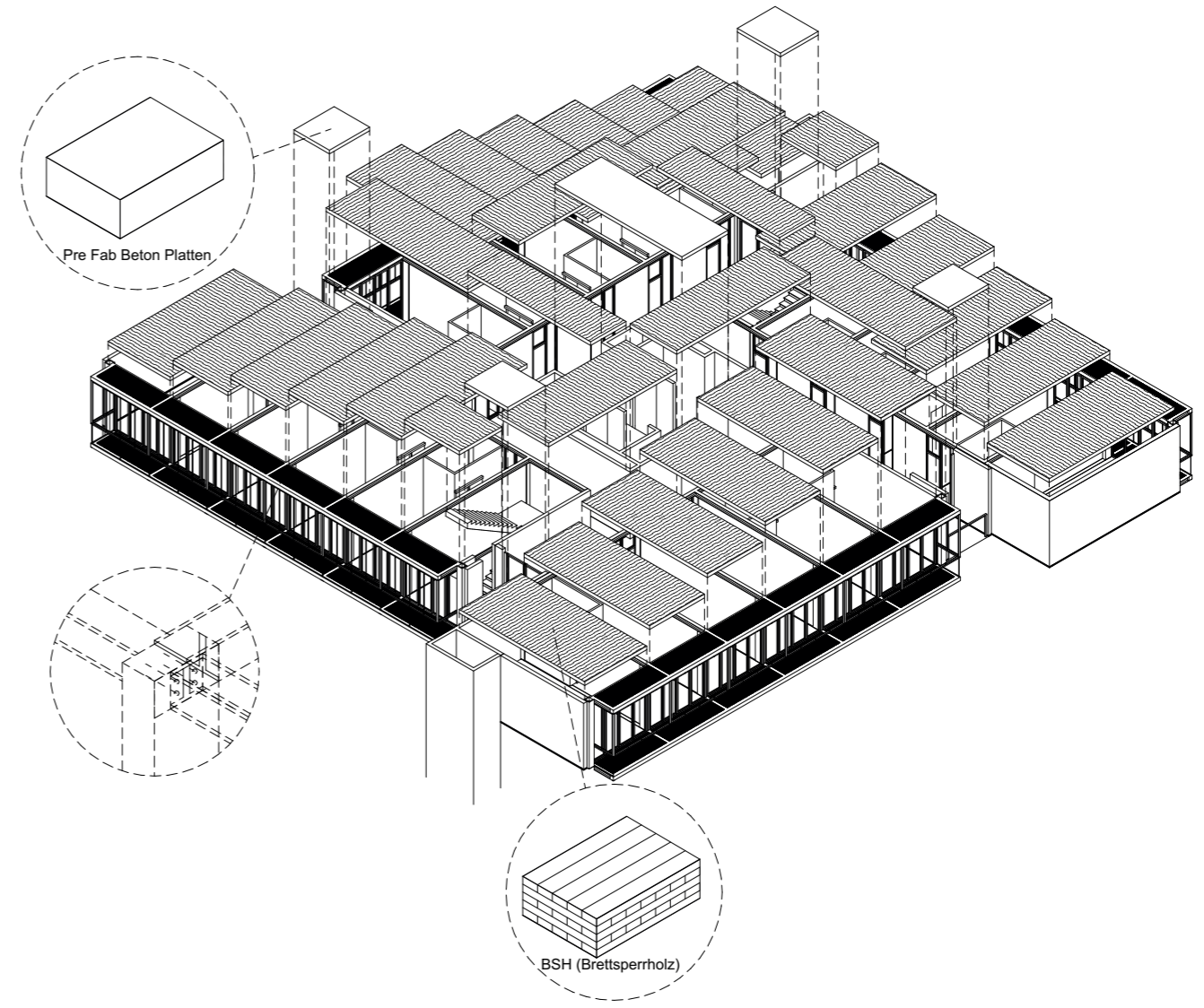


Bestand

Neu

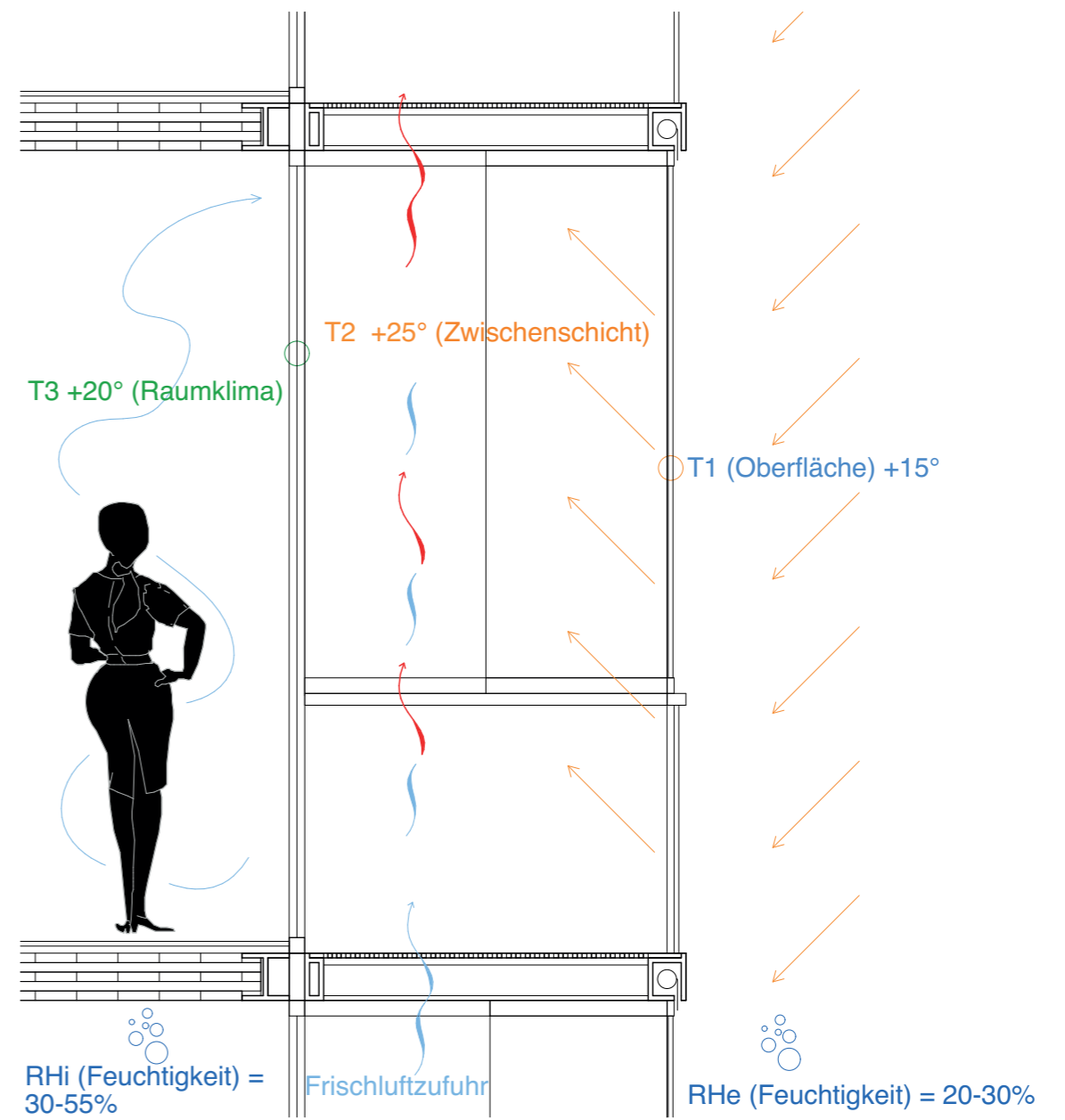
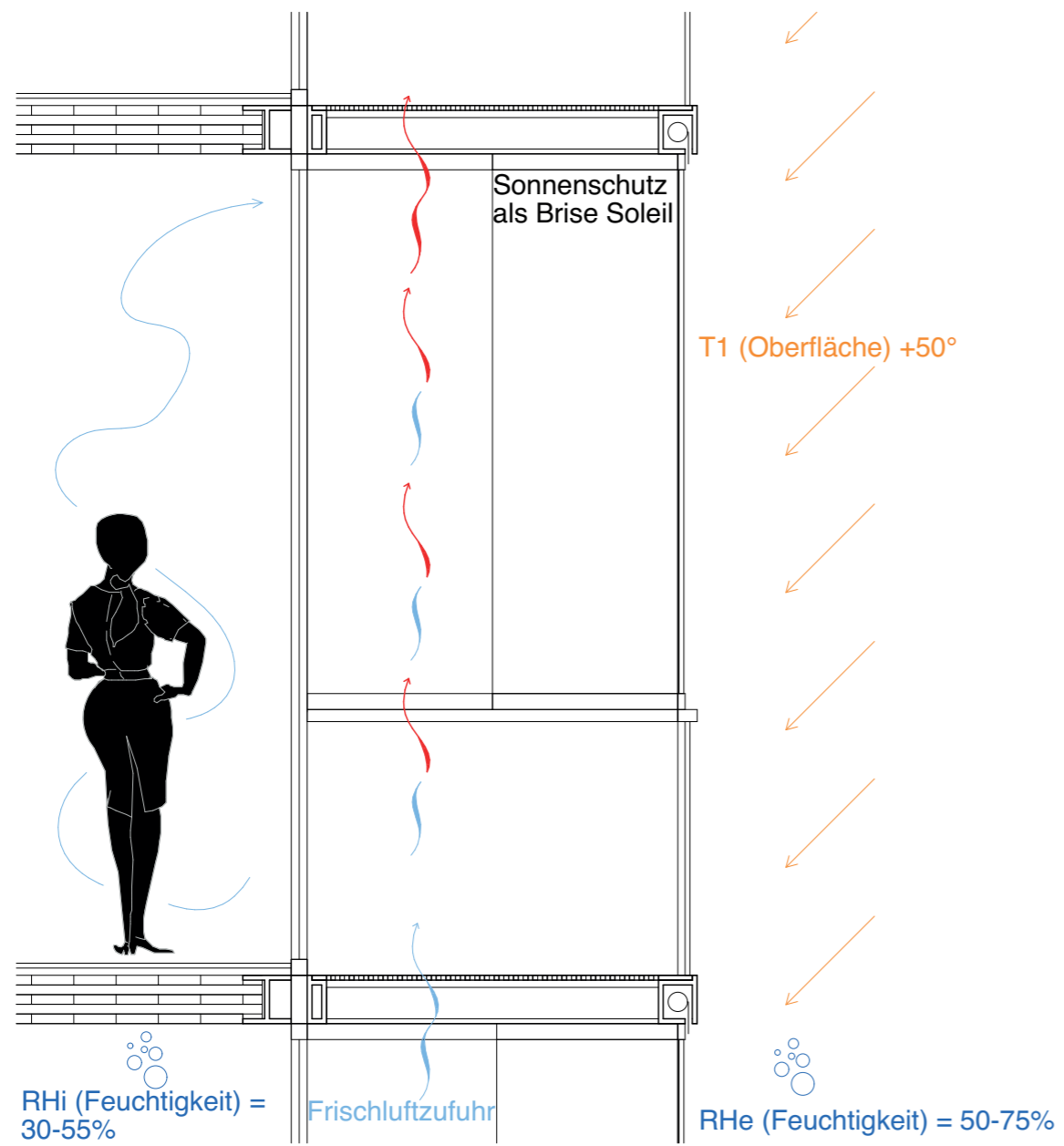
- Treppenkerne Ort beton
- Wandscheiben Ort beton
- Stützen Ort beton
- Geschossplatten Ort beton

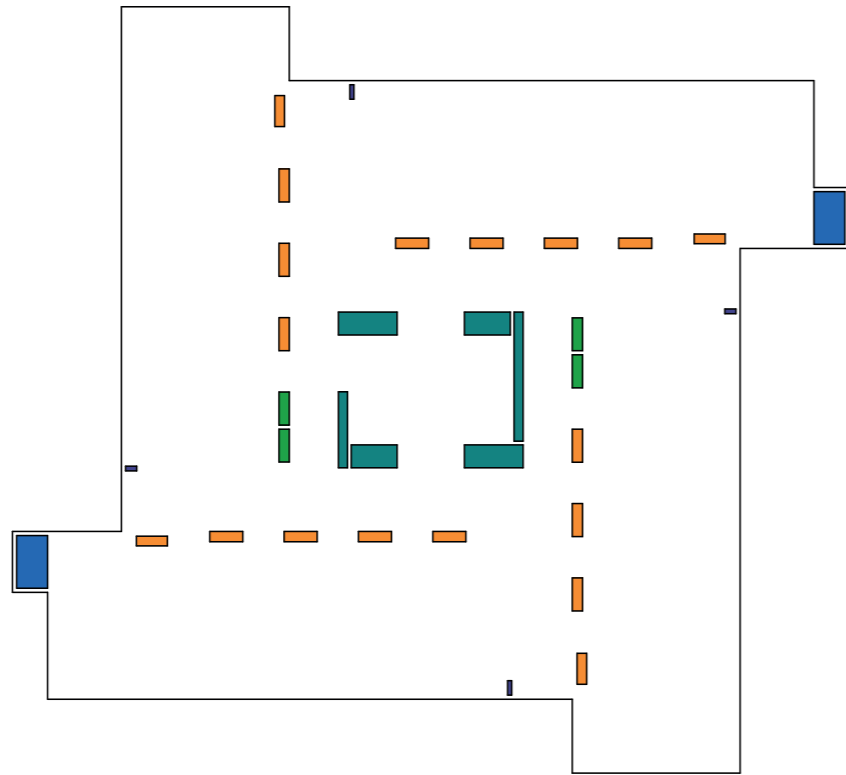
- Treppenkerne Ort beton
- Wandscheiben Prefab Beton Elemente
- Stützen Eschenholz
- Unterzüge Stahl, H-Profil



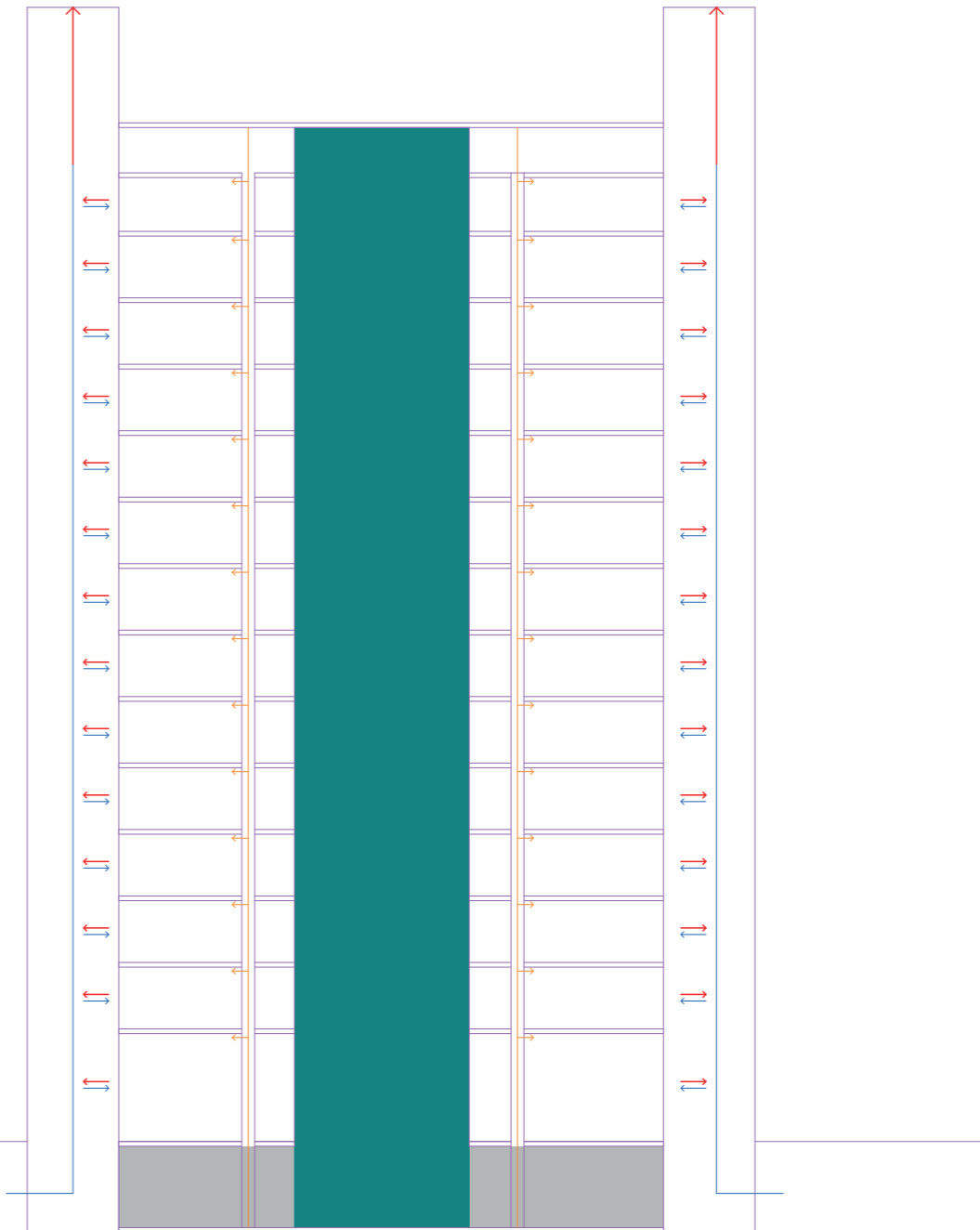
Pre Fab Beton Platten

BSH (Brettsper Holz)

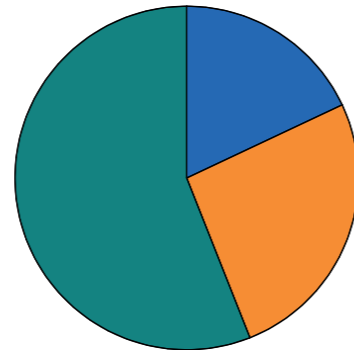




- Luftschacht
- Haustechnik, Wasser, Elektrizität
- Unterhalt Lifтанlagen, Elektrizität
- Elektrizität Storenanlagen Fassade



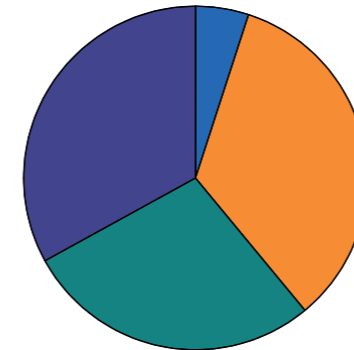
Bauen im Bestand



- Stützen (Beton) (18%)
- Wandscheiben (Beton) (26%)
- Geschossplatten (Beton) (56%)
- Elektrizität Storenanlagen Fassade

97.7kgCO<sub>2</sub>e/kg/m<sup>2</sup>

Aufstockung



- Stützen (Eschenholz) (5%)
- Wandscheiben (Pre Fab Beton Elemente) (34%)
- Unterzüge (Stahl, H-Profil) (28%)
- Geschossplatte (Brettsperrholz) (33%)

73.5kgCO<sub>2</sub>e/kg/m<sup>2</sup>

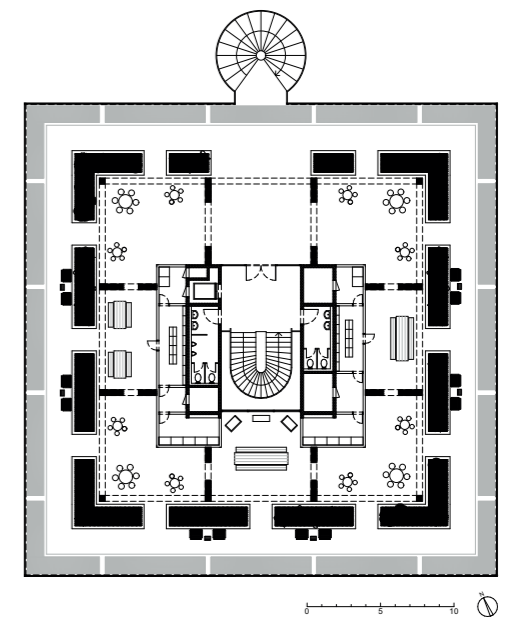
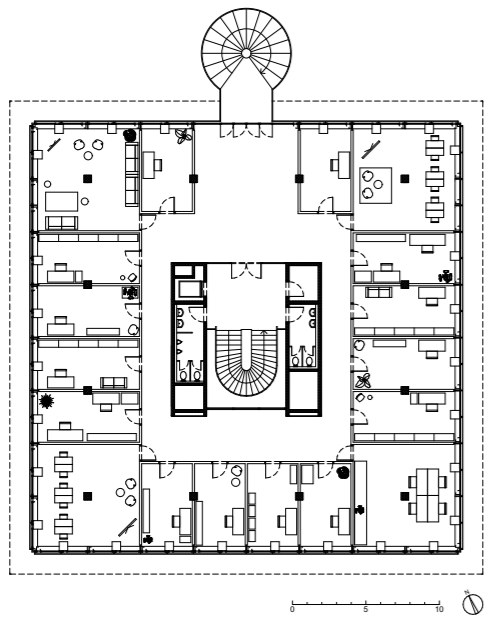
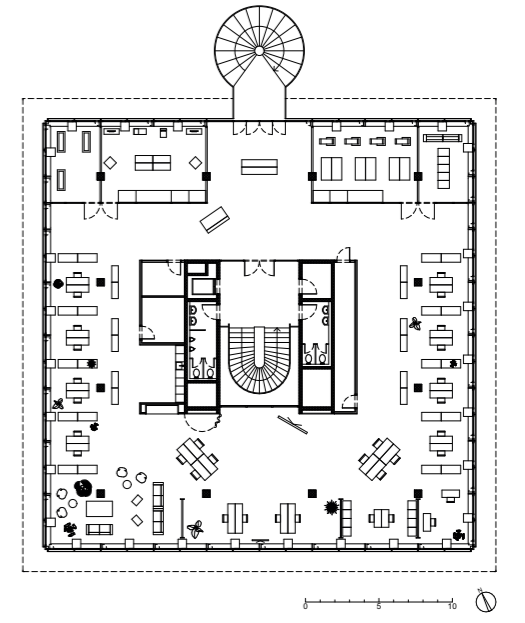
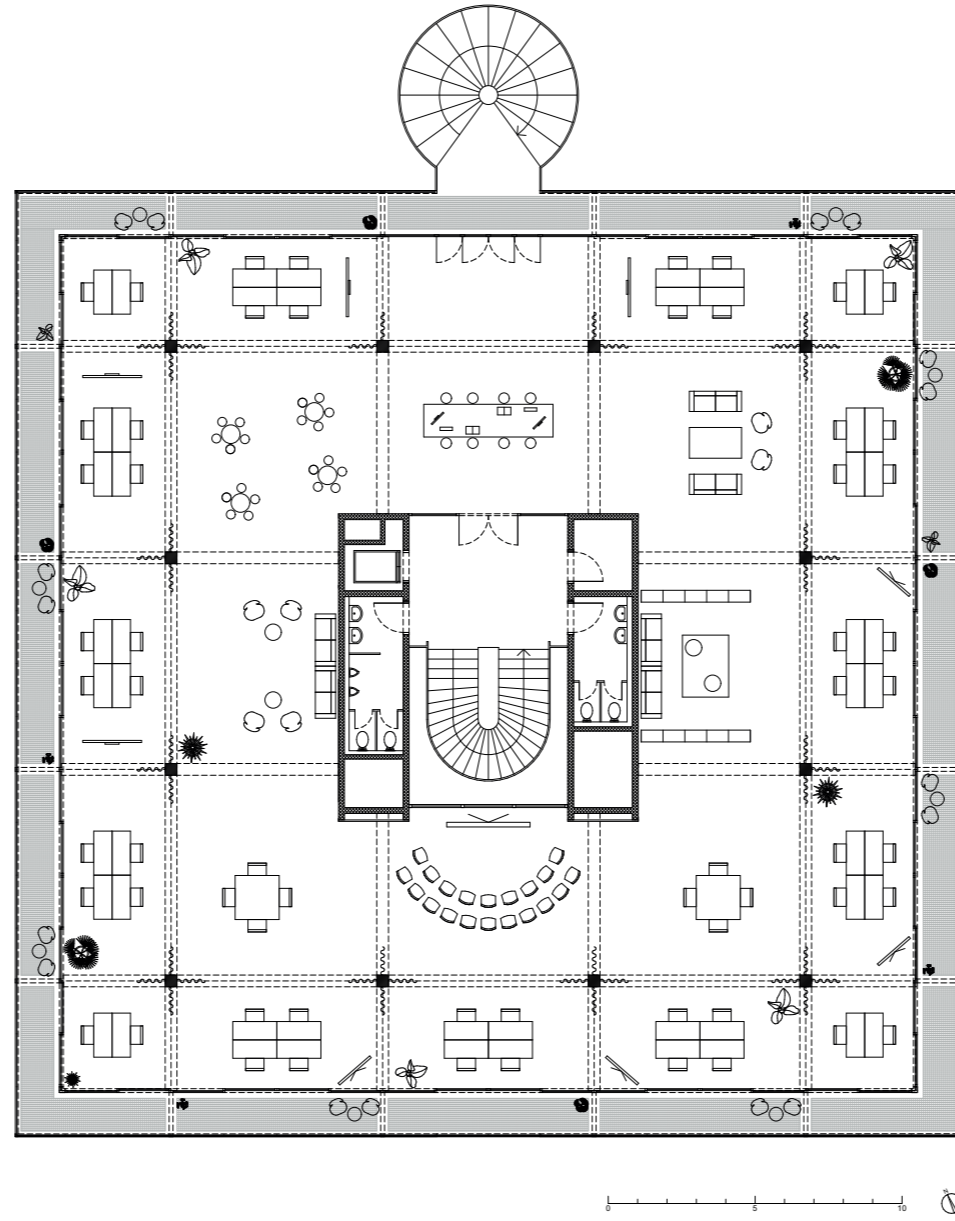
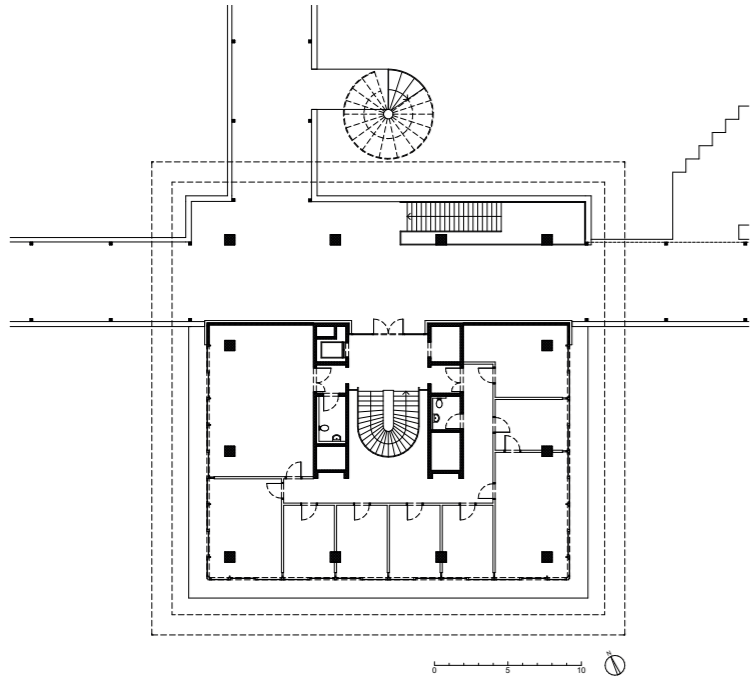


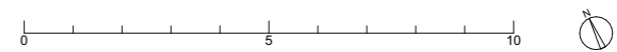


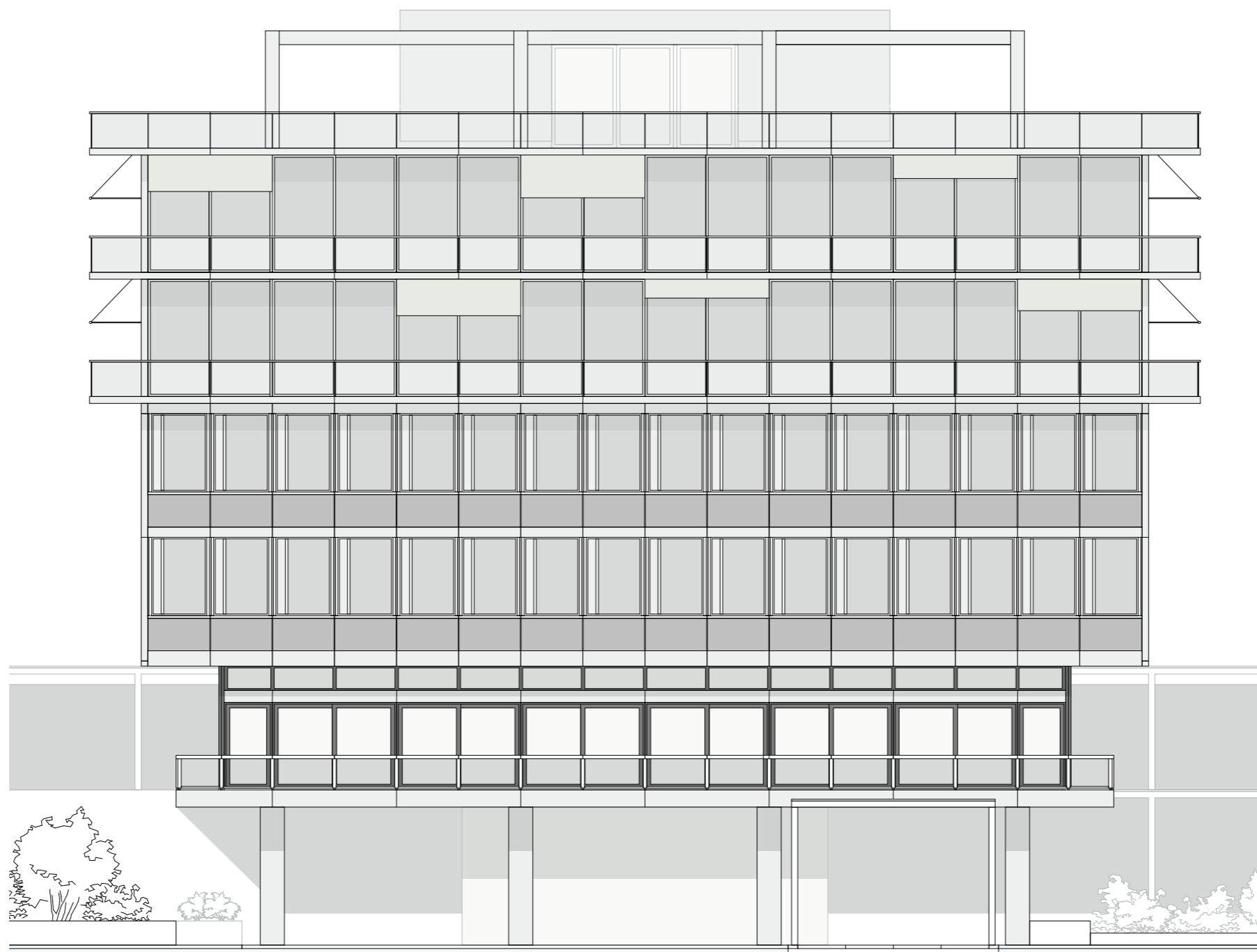


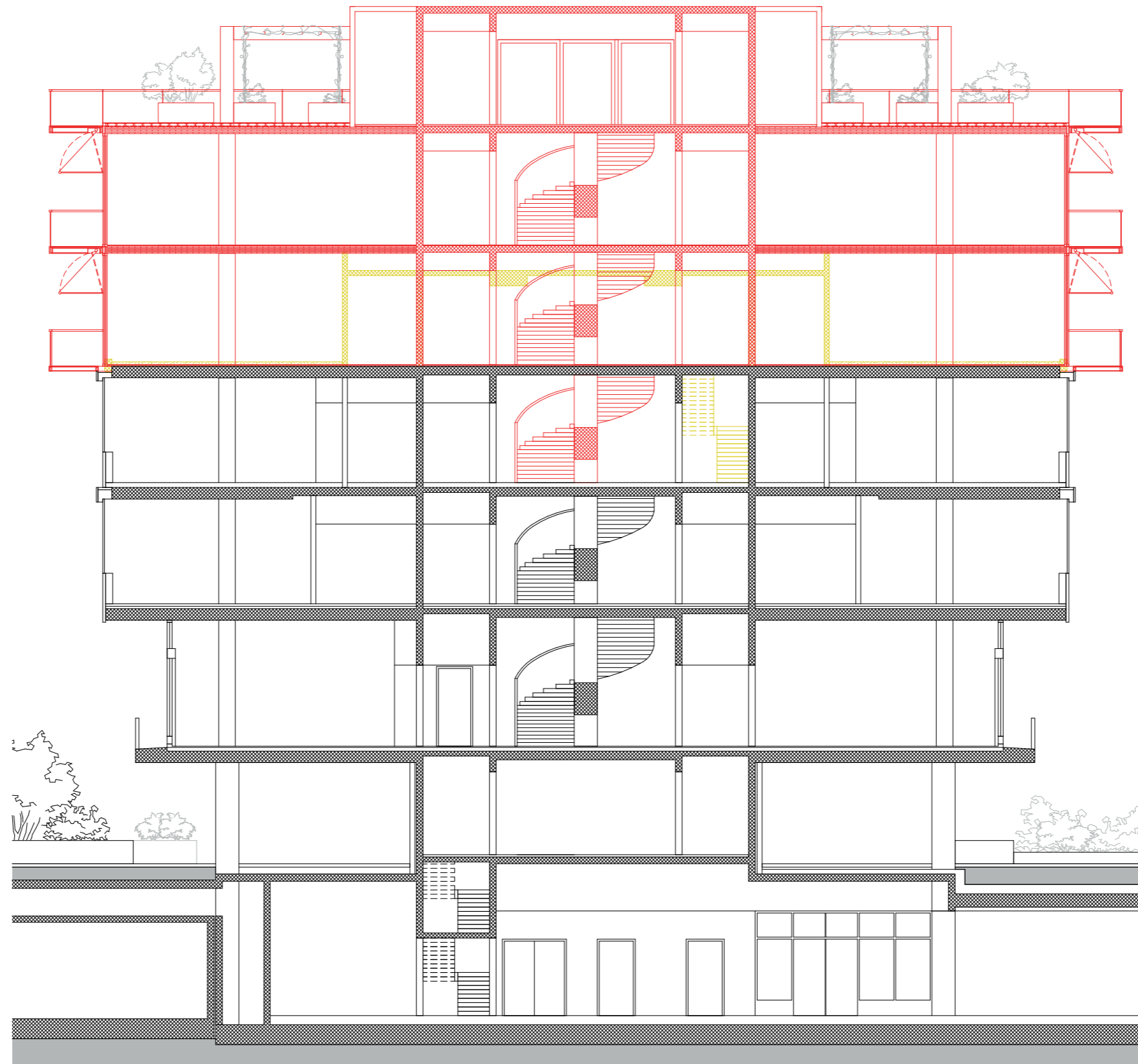












0 5 10



