



# THE FORMER CANTEEN AS A NEW VIBRANT SPACE

LOÏC GODON - STUDIO A. LACATON - TOPIC C















# I. EXISTING

## *URBAN*

the need of public space - climatic issues

## *BUILDING*

structure - envelope - circulation

# II. SUBTLE BUT AMBITIOUS TRANSFORMATION

## *STATEMENT*

## *STRATEGY*

step 1 - step 2

# III. A NEW VIBRANT SPACE

## *SCENARIO*

*WHEN SUBTLE CHANGES CAN REVEAL THE POTENTIAL  
OF AN EXISTING STRUCTURE AND TRANSFORM THE  
FORMER CANTEEN INTO A NEW VIBRANT AND GENER-  
OUS SPACE FOR THE INHABITANTS AND THE VISITORS,  
THIS IS WHAT THE PROJECT IS ABOUT.*

# I. EXISTING

# URBAN

- *HOW TO ANSWER TO THE LACK OF PUBLIC SPACE*
- *HOW TO AVOID THE HEAT ISLAND ISSUE*



THE NEED FOR PUBLIC SPACE    the building as part of the central public space



I. EXISTING



**CLIMATIC ISSUES** a green axis to cool the neighborhood



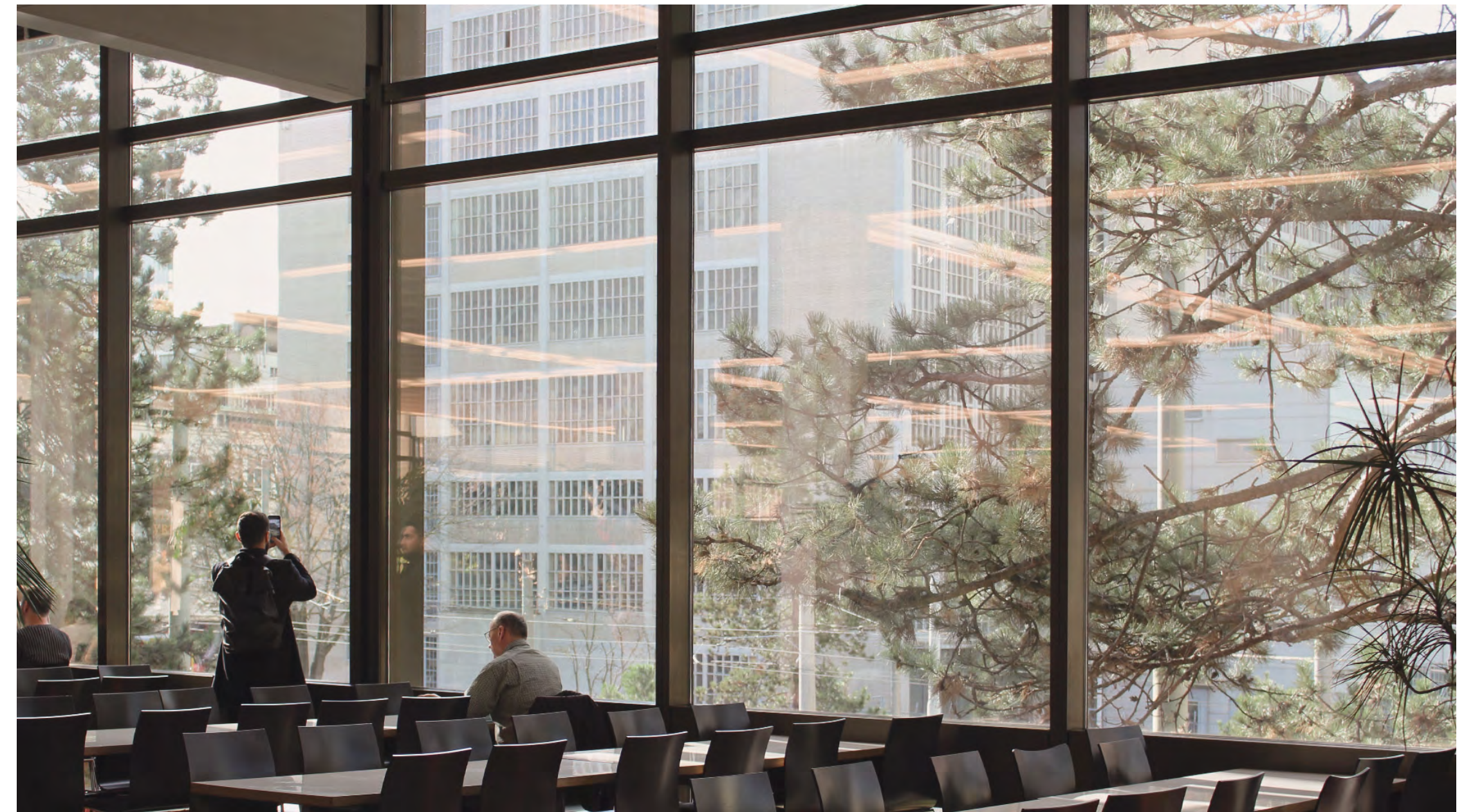
I. EXISTING



# BUILDING

- *CONCRETE PILLAR-BEAM STRUCTURE*
- *OPEN AND LARGE SPACES*
- *GREAT NATURAL LIGHT ALL AROUND*
- *CONNECTION TO THE STREETS AND TREES*





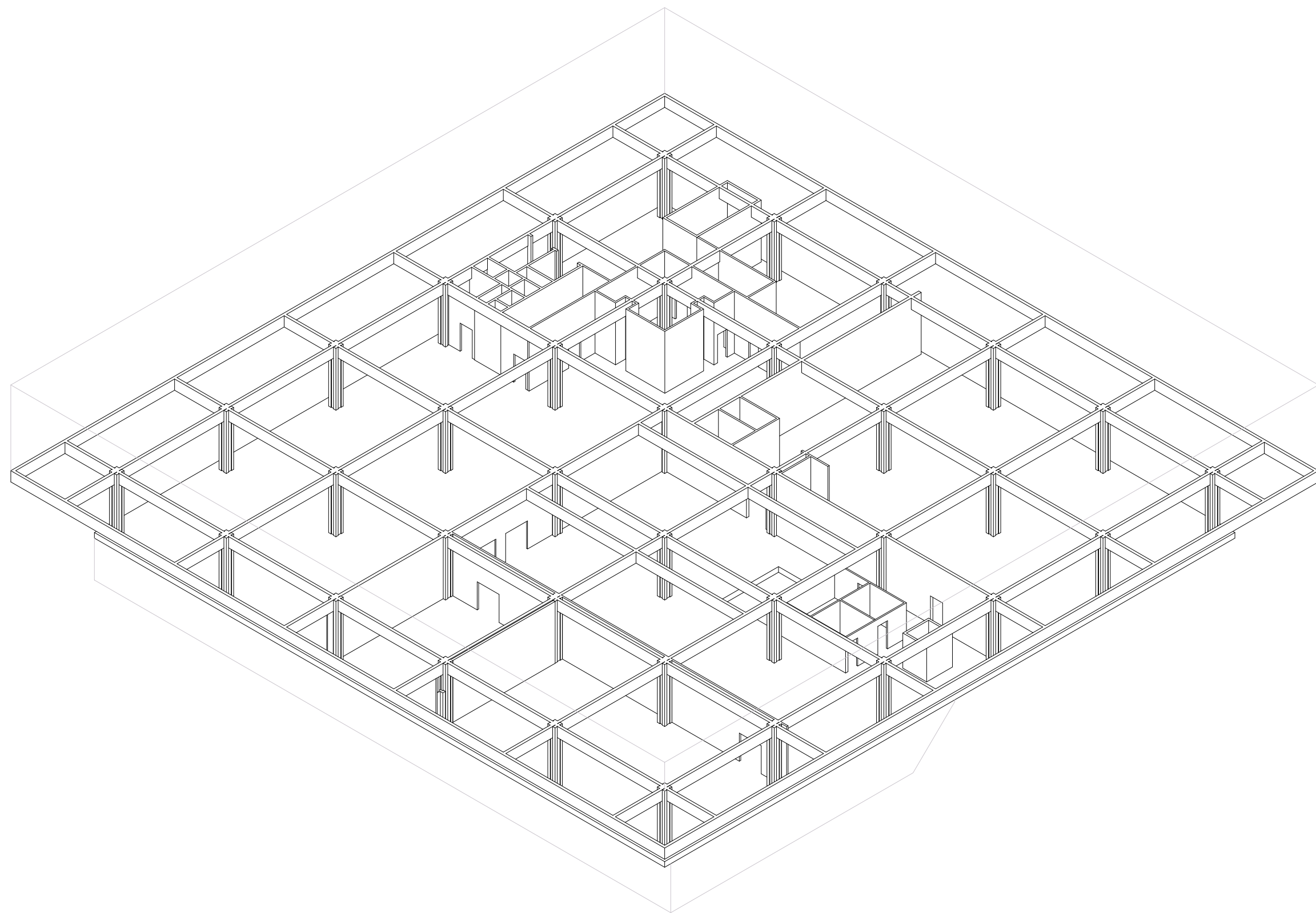
I. EXISTING



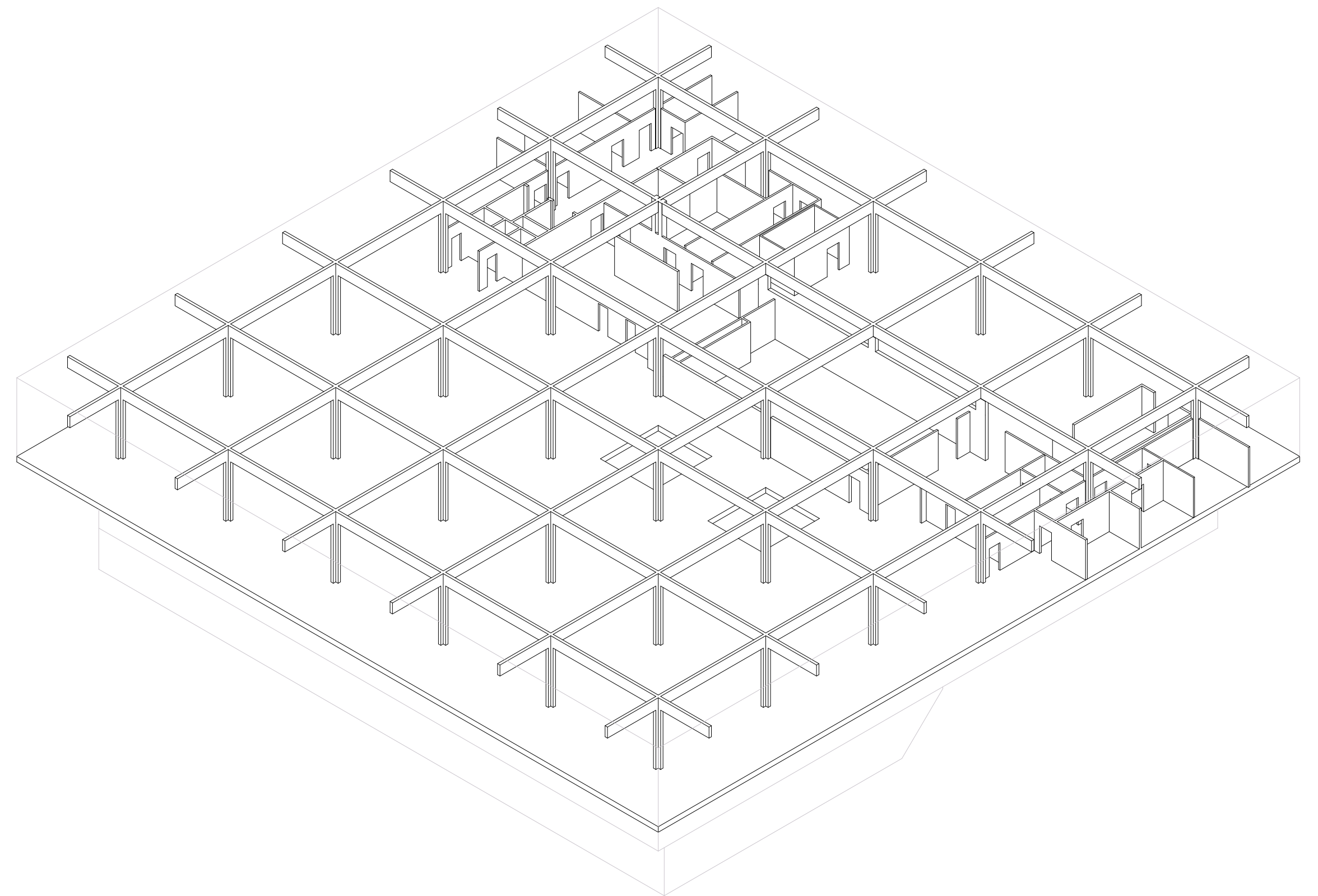
## STRUCTURE

- reinforced concrete pillar-beam structure
  - large space with high ceiling
- freedom in the division of the space itself

LEVEL 0



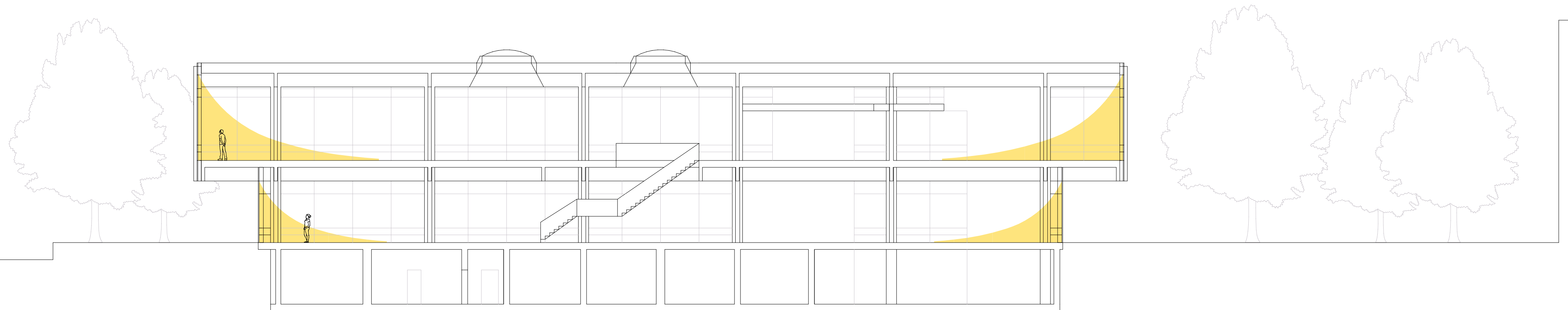
LEVEL 1





## ENVELOPE

- independent curtain wall hanging on the beams
  - fully transparent envelope
  - great natural light all around the building
  - efficient glazing but airtight, no openings
- thermopane glazing with anodized bronze frame



I. EXISTING



CIRCULATION

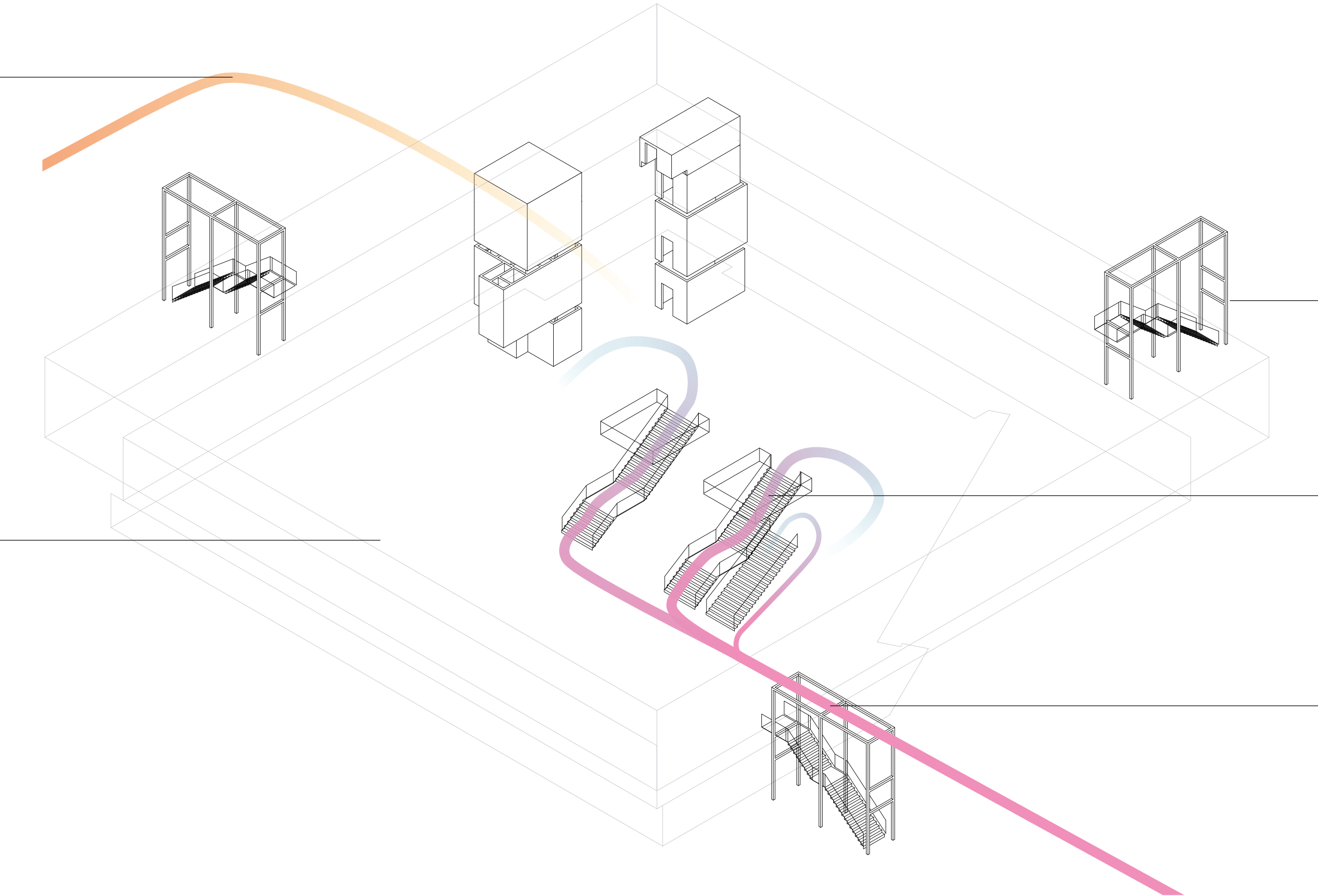
north entrance and elevators  
for goods delivery

3 fire staircases added later

2 open staircases serving level 1

no access to the roof

main entrance south





## **II. SUBTLE BUT AMBITIOUS TRANSFORMATIONS**



# STEP 1

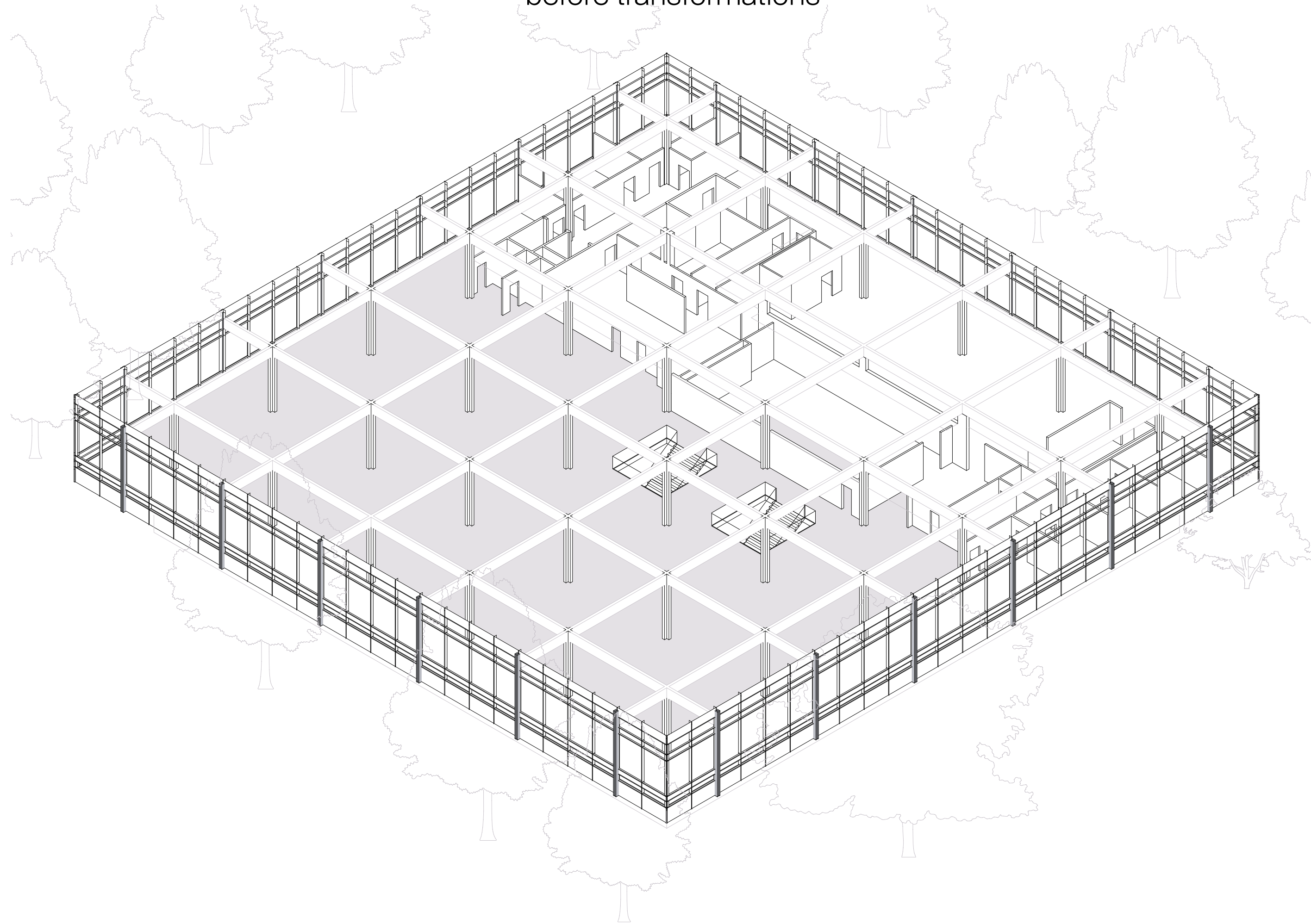
*TRANSFORMATIONS FOR  
MAXIMAL POTENTIAL AND FLEXIBILITY*

- MAXIMUM EXPLOITATION POTENTIAL*
- GREAT ADAPTABILITY AND FLEXIBILITY*
- ACCOMMODATING FUTURE NEEDS*



## EXAMPLE : LEVEL 1

before transformations



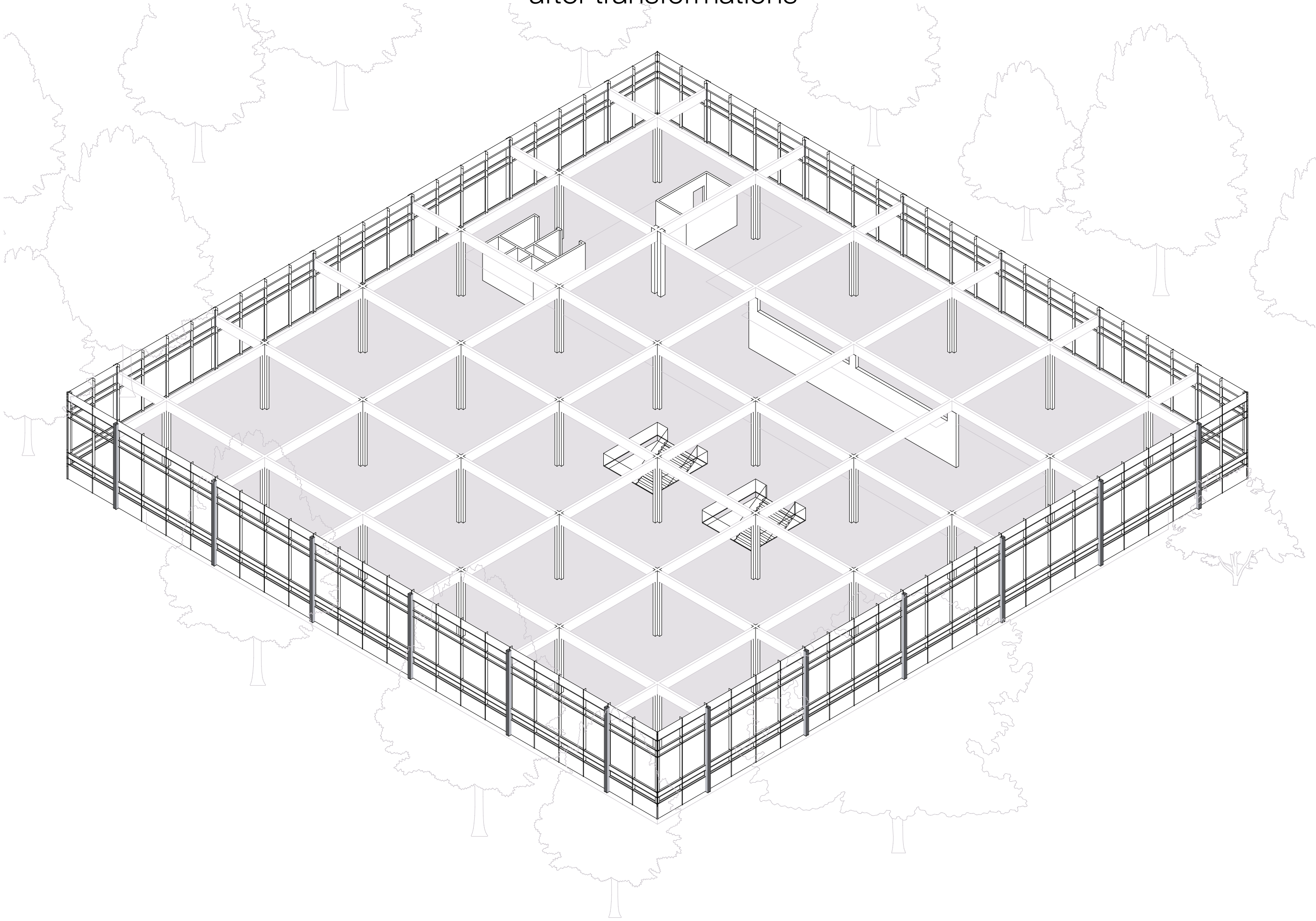
### EXISTING POTENTIAL

- open on every side
- natural light
- high windows
- high ceiling
- trees viewing
- solar gain



EXAMPLE : LEVEL 1

after transformations



FULL POTENTIAL

+ 1210 m2 of usable surface



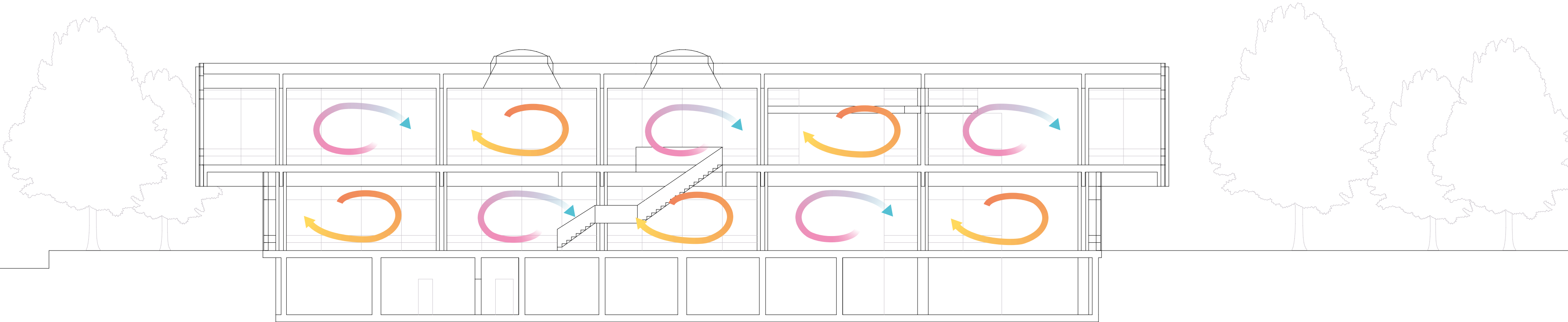
# STEP 2

*TRANSFORMATIONS FOR  
CLIMATIC ANSWER*

*- BIOCLIMATIC BUILDING  
- HUMAN SPECIFIC COMFORT ZONE  
VS MECHANICALLY CONTROLLED CLIMATES*



PROBLEM OF THE EXISTING

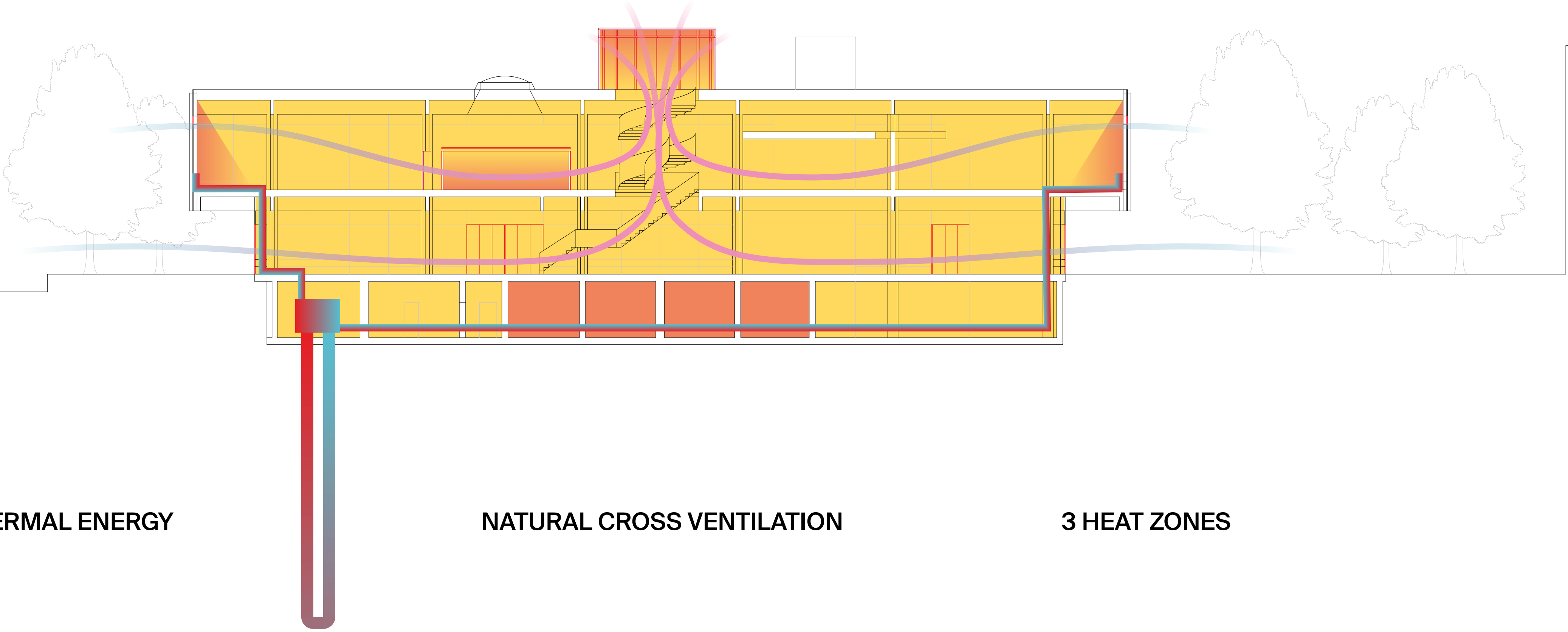


MECHANICALLY CONTROLLED CLIMATES

not sustainable  
not human comfort zone specific



**SOLUTION : THE BIOCLIMATIC MACHINE**



**GEOTHERMAL ENERGY**

**NATURAL CROSS VENTILATION**

**3 HEAT ZONES**



# III. A NEW VIBRANT SPACE

- *TAKING ADVANTAGE OF THE INHERENT QUALITIES*
- *CREATING SPACES THAT MEET CURRENT NEEDS*
  - *MINIMAL INTERVENTIONS TO KEEP  
BUILDING'S MAXIMUM POTENTIAL OPERATING*





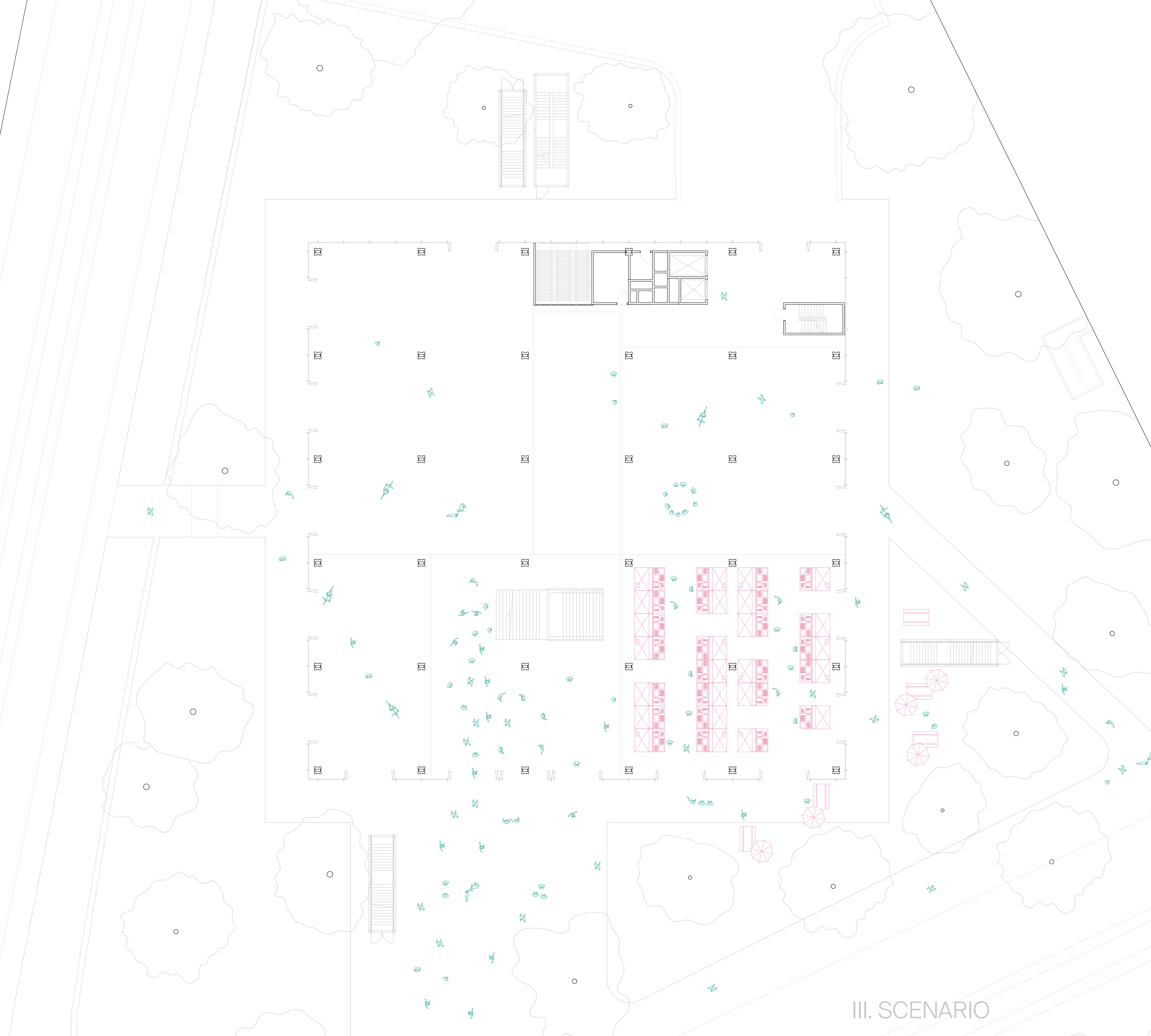
# LEVEL -1

## *SPA + STORAGE*

### QUALITIES ADDED

storage space  
additional function





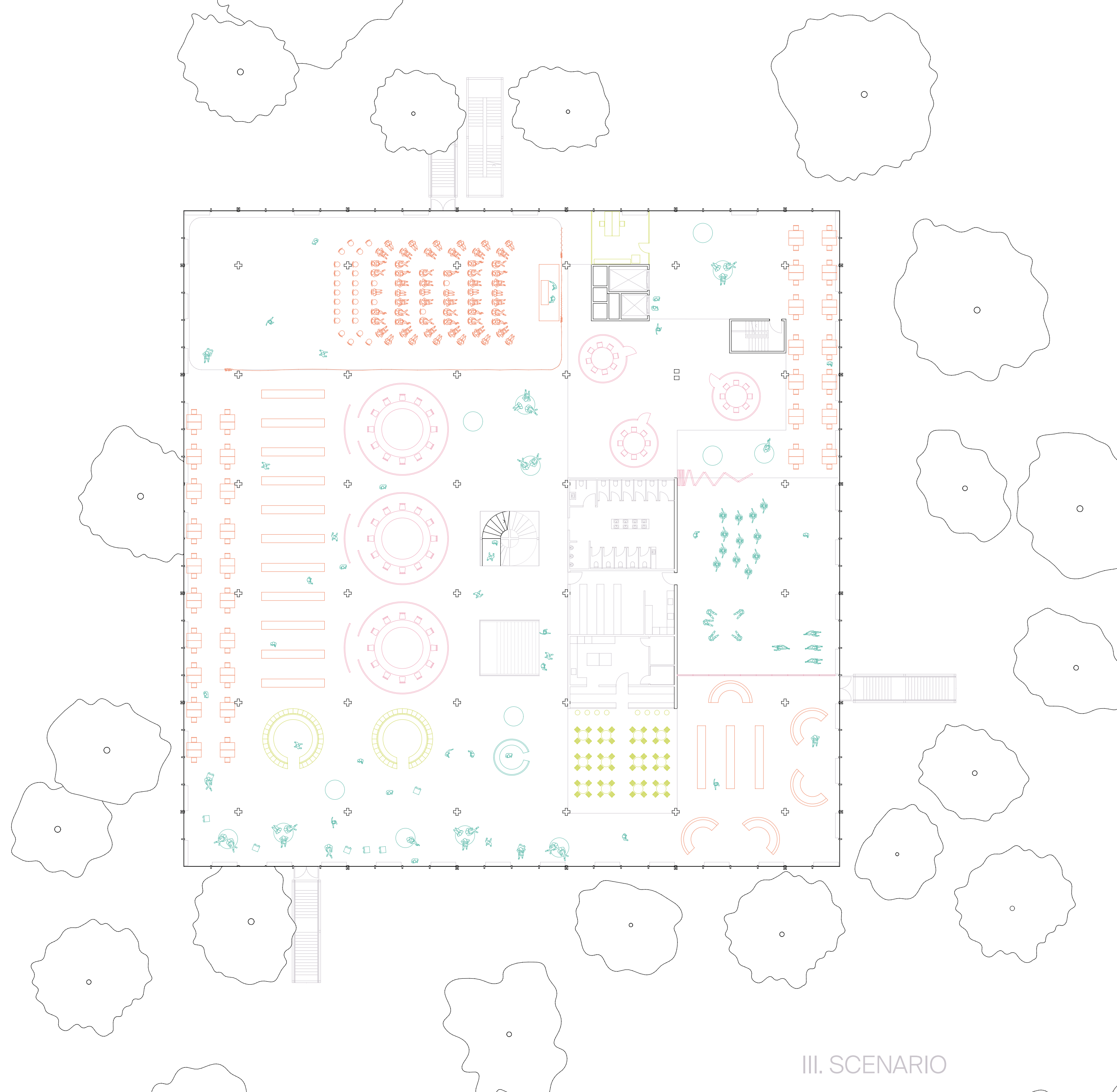
# LEVEL 0

## *EVENT SPACE + PUBLIC SQUARE*

### QUALITIES ADDED

- generosity of space
- flexibility of use
- direct relation to outside





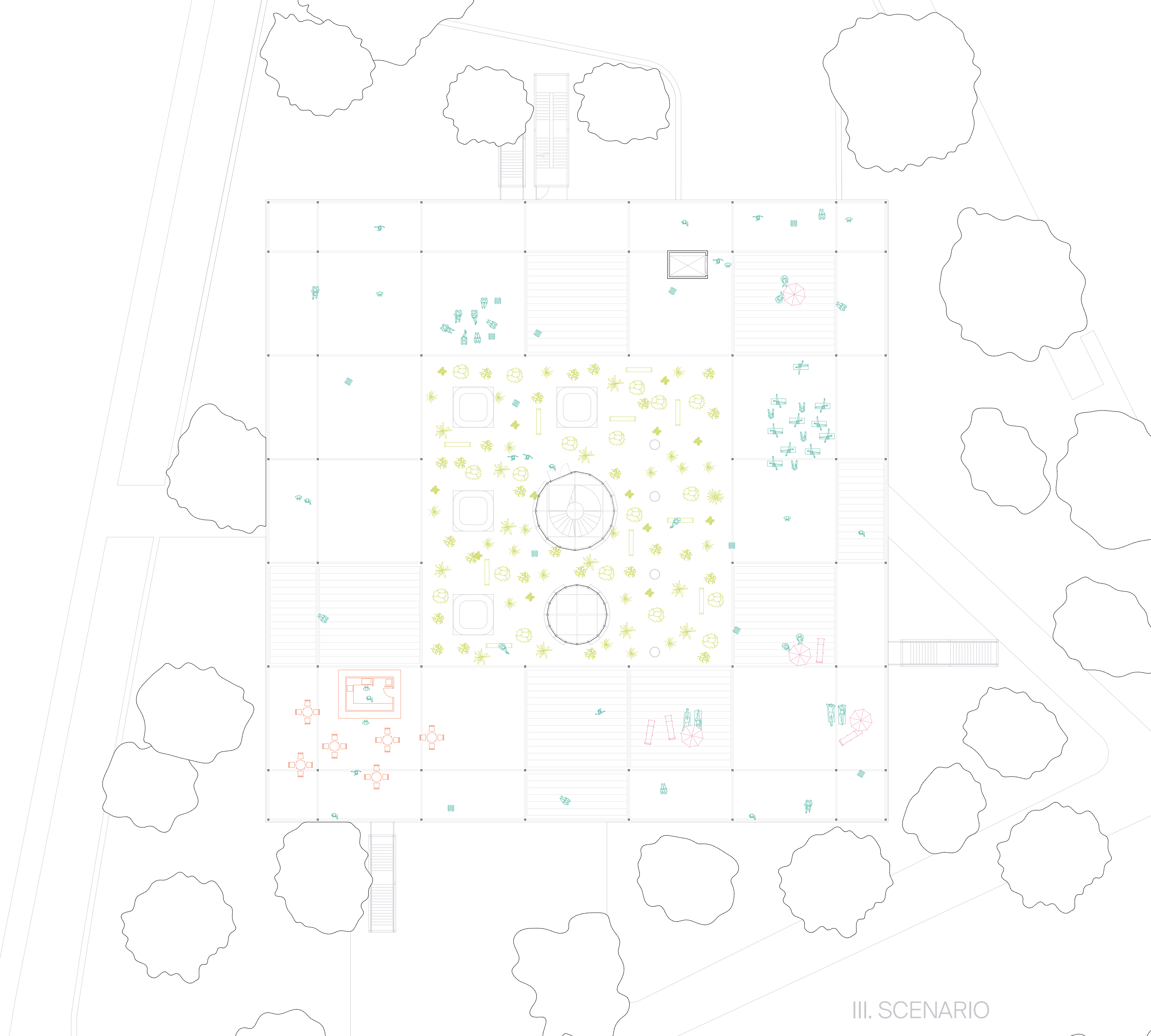
# LEVEL 1

*LIBRARY, BOOKSHOP, READING SPACE,  
CONFERENCE ROOMS, CAFÉ  
+ FLEXIBLE SPACE (LECTURE,  
EXHIBITION, SHOW,...)*

## QUALITIES ADDED

one open space  
different sound/intimacy environments  
spaciousness  
diversity of use  
flexibility





# LEVEL 2

*OPEN PLATFORM FOR DIVERSE USES  
(OPEN AIR CINEMA, GARDEN,  
BAR, YOGA LESSON, ...)*

## QUALITIES ADDED

new usable surface  
protection from the sun  
views on the city



*HIGH QUALITY BAUKULTUR REQUIRES STRIKING THE RIGHT BALANCE BETWEEN CULTURAL, SOCIAL, ECONOMIC, ENVIRONMENTAL, AND TECHNICAL ASPECTS OF PLANNING, DESIGN, BUILDING, AND ADAPTIVE REUSE, IN THE PUBLIC INTEREST FOR THE COMMON GOOD.*

*KOENRAAD VAN CLEEMPOEL*