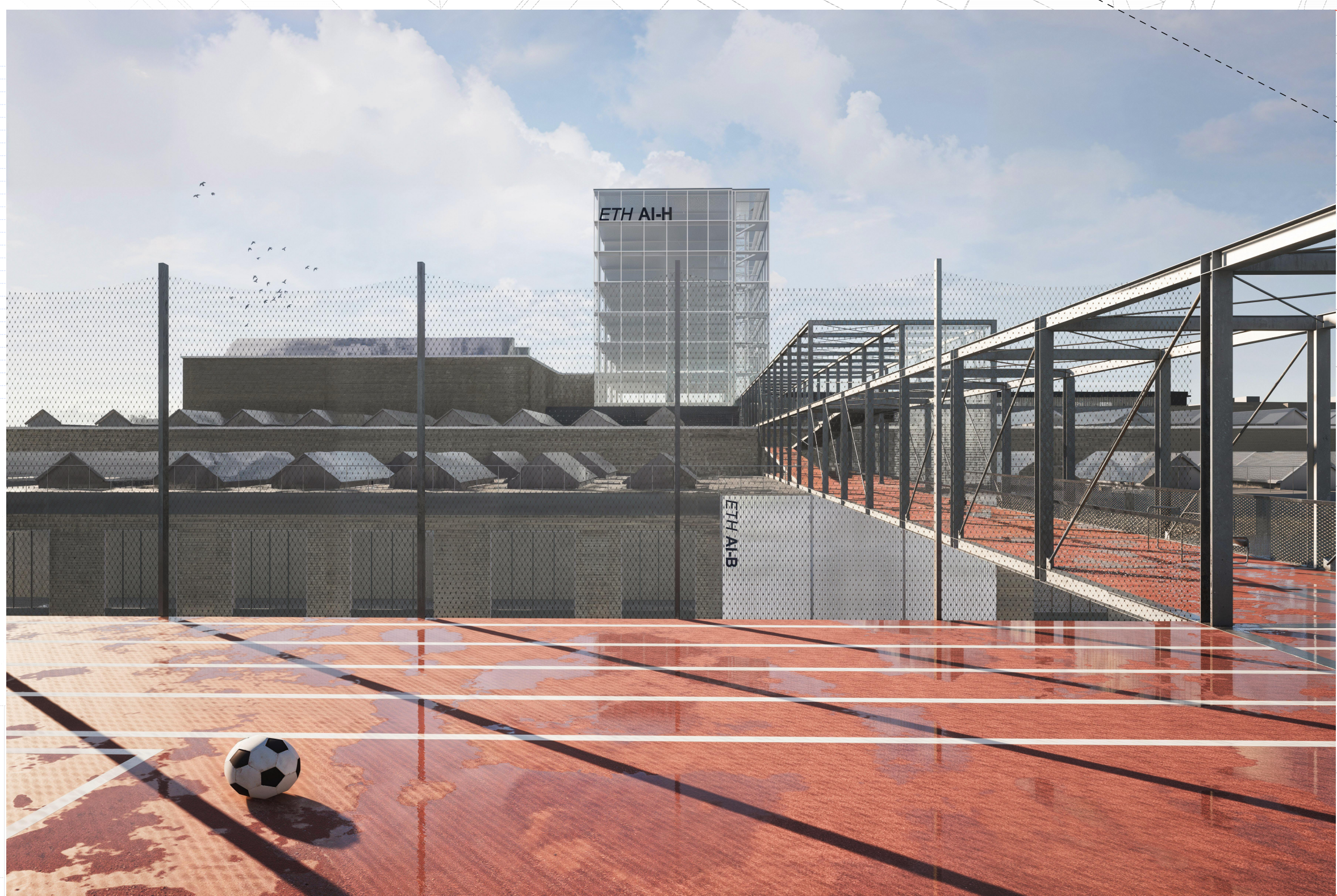
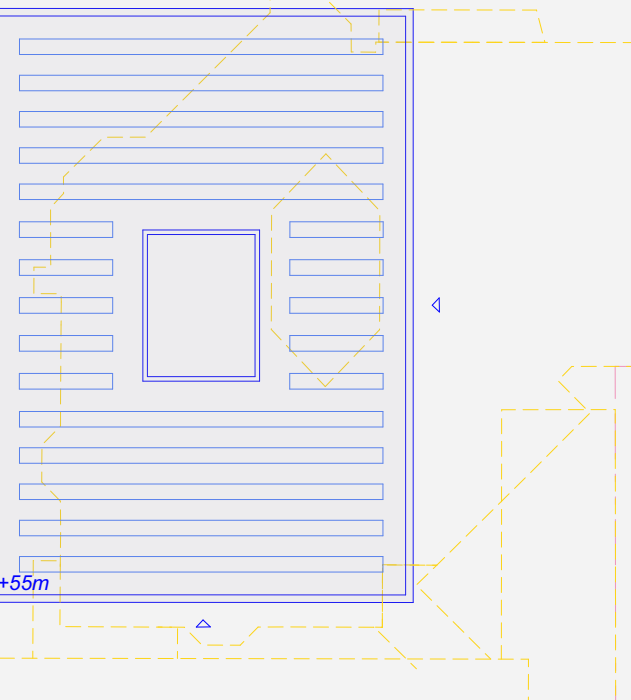
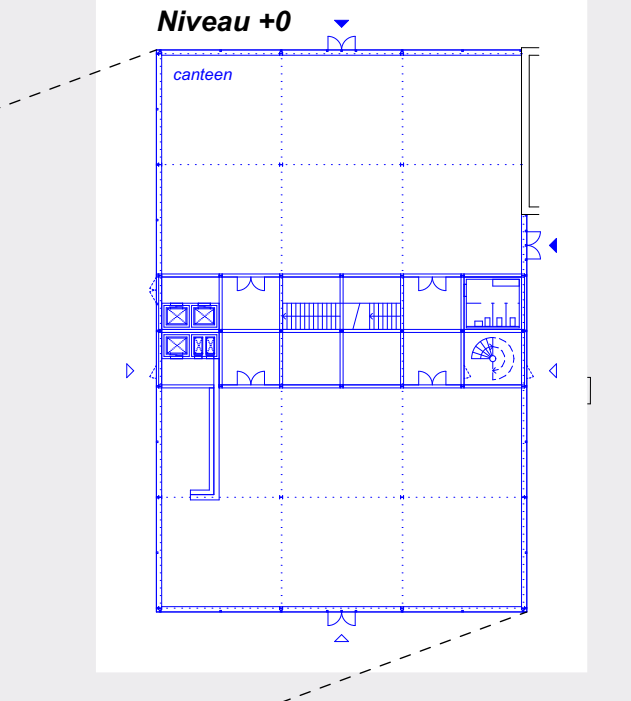
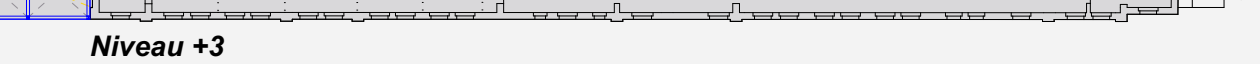
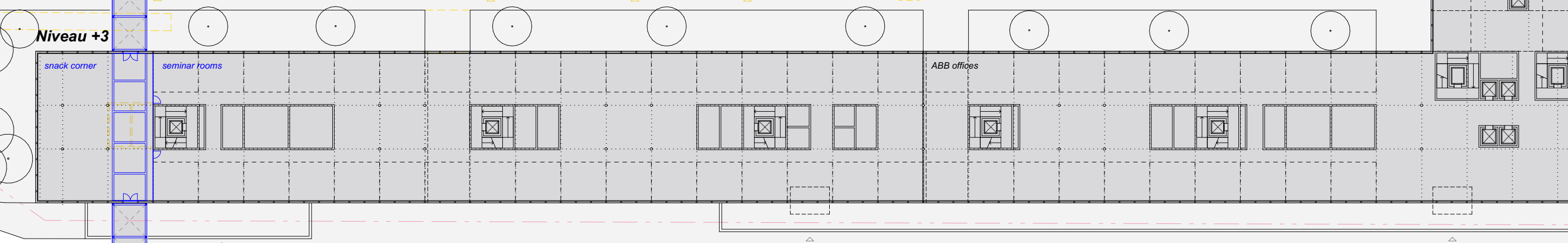
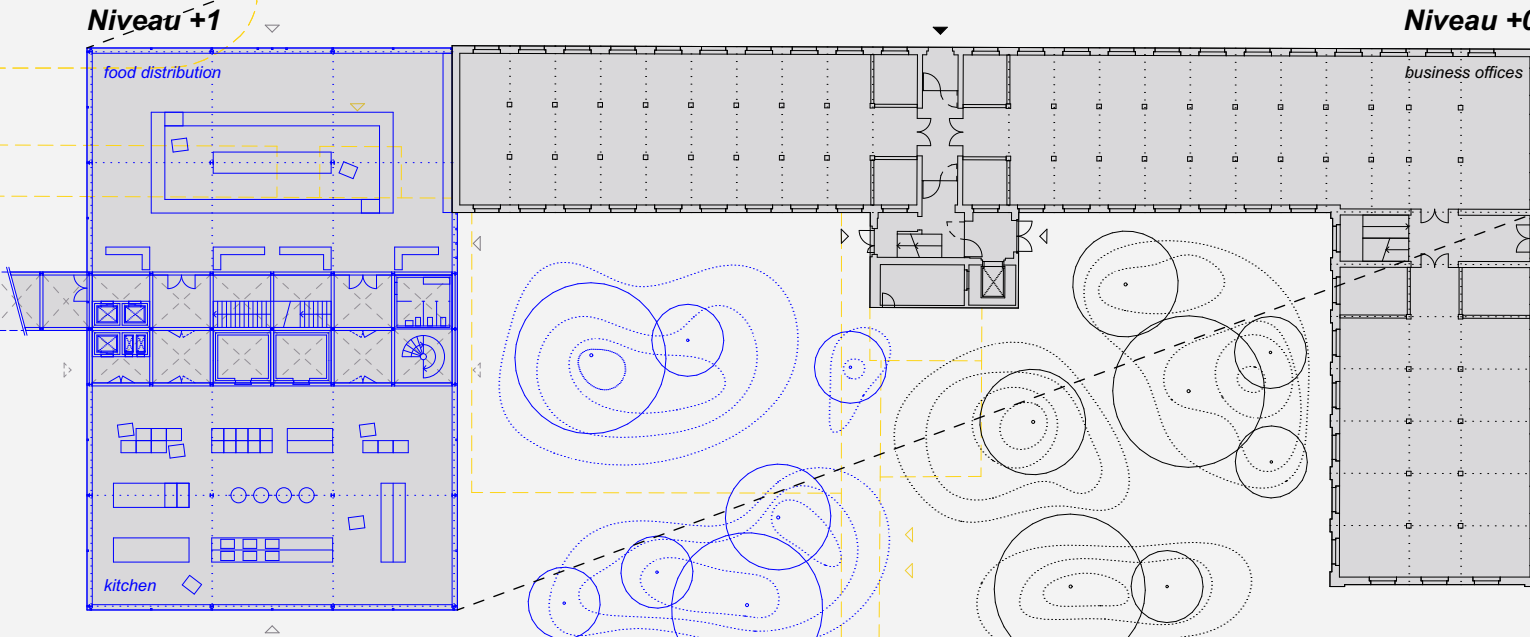
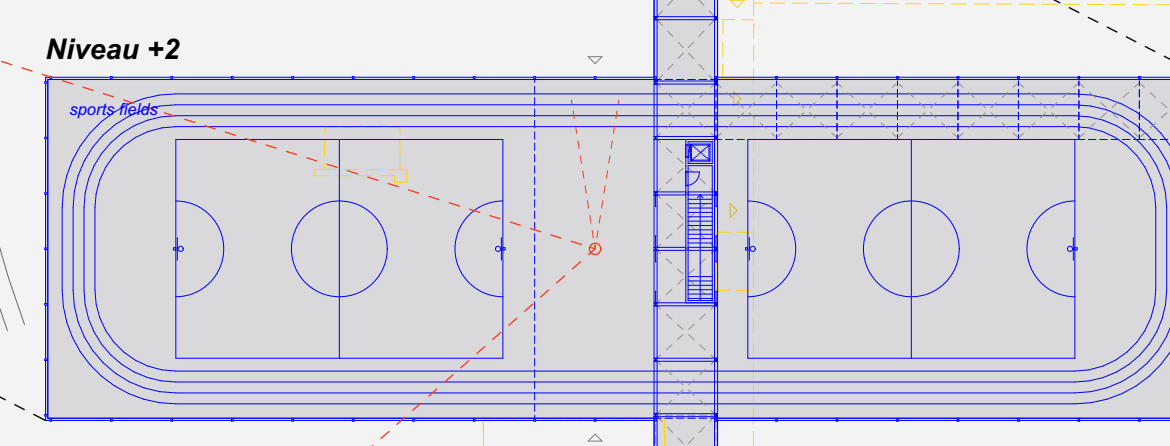
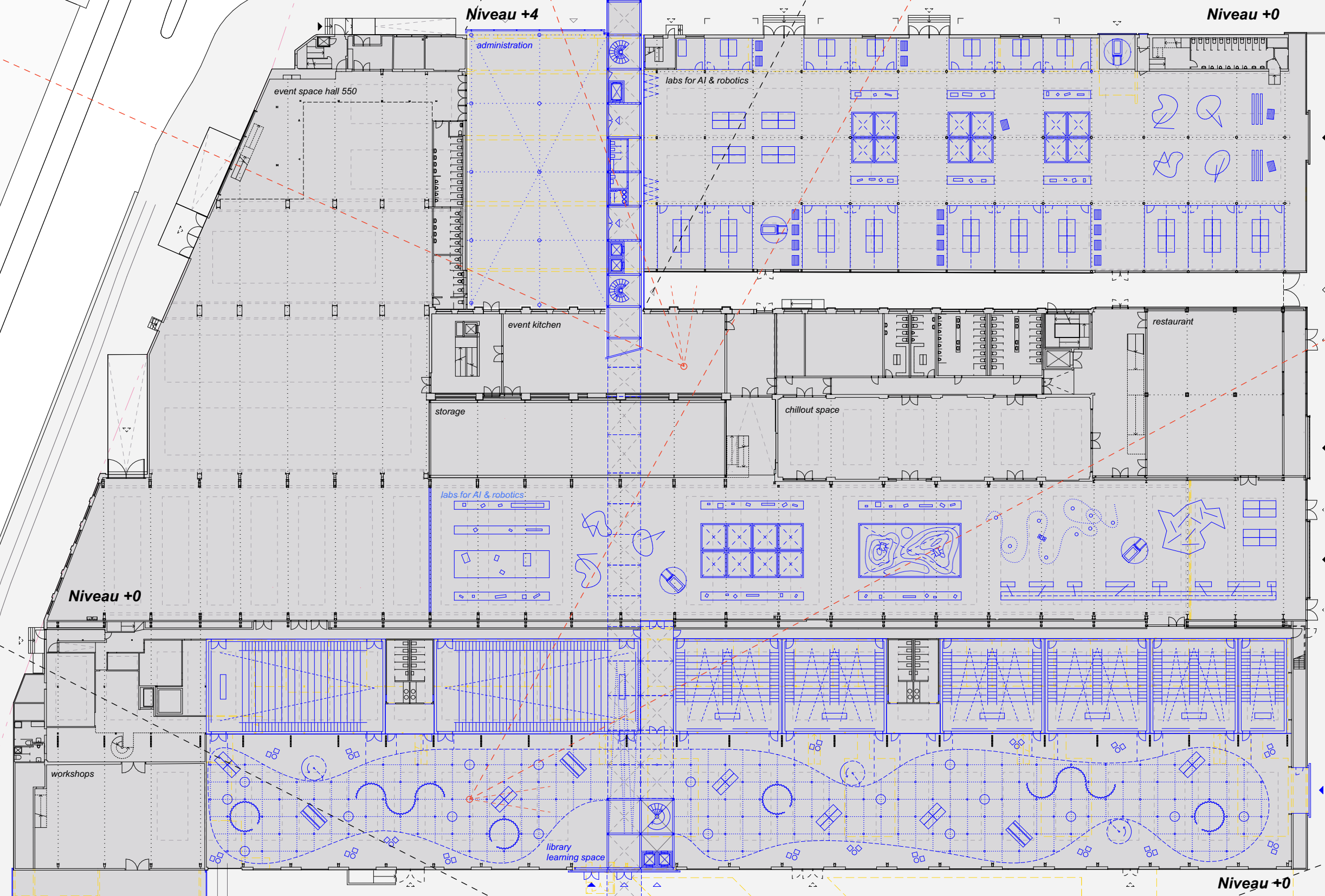
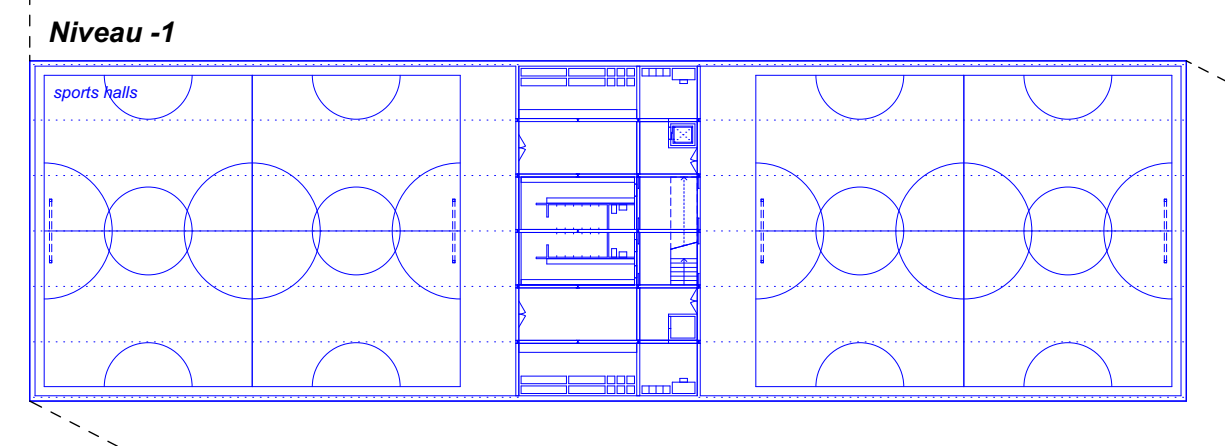
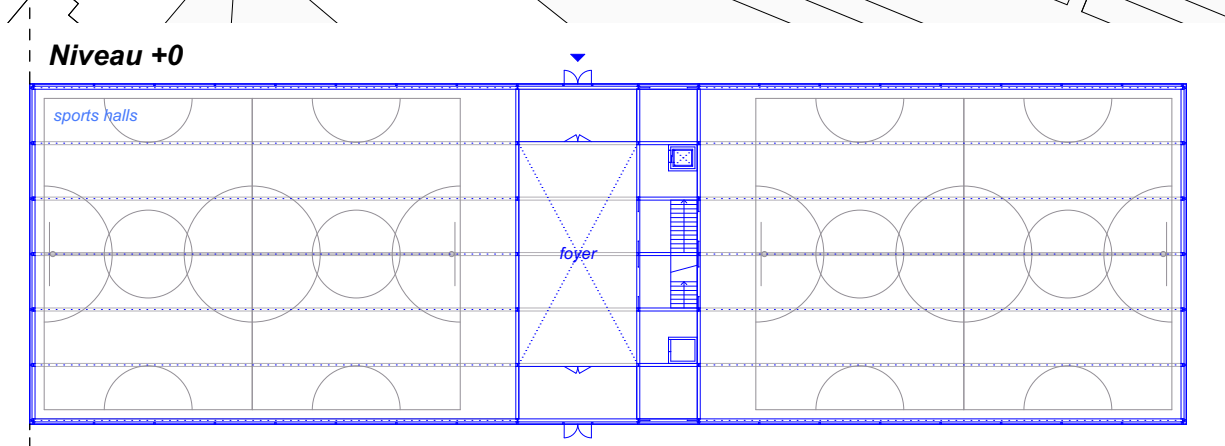
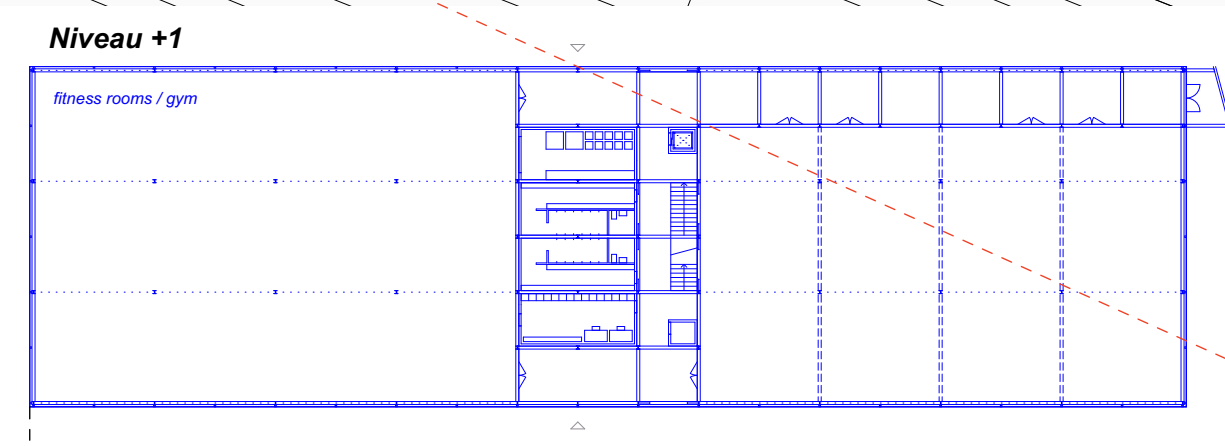




CAMPUS IN THE URBAN FABRIC
previously isolated buildings are being transformed into a cohesive campus within the existing urban fabric



BETWEEN HISTORY AND FUTURE
the open and public learning space as a foyer for the auditoriums in the converted MFO hall 550



RUBBER RED FLOOR
the passarelle expands horizontally into sports fields and vertically over the roofs of the historic MFO factory halls

situation plan with the urban development and the new campus | 1:500

Station Oerlikon Nord

section through the passarelle | 1:500