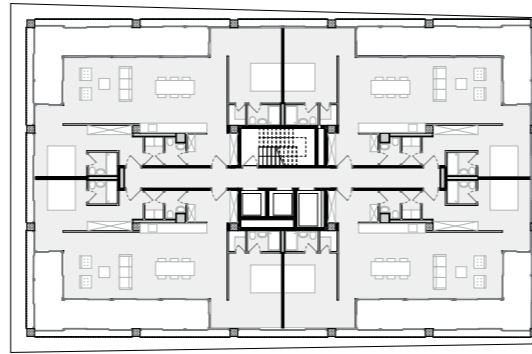


## High-End Housing and Exceptional Panorama

Starting from the seventh floor, where the noise levels from rail and road traffic are less perceptible, high-end housing will be developed. The breathtaking view, stretching from the mountains in the southeast to the northern plains, with an opening towards Zurich city from 50 meters, justifies the choice of this location and therefore high end flats.

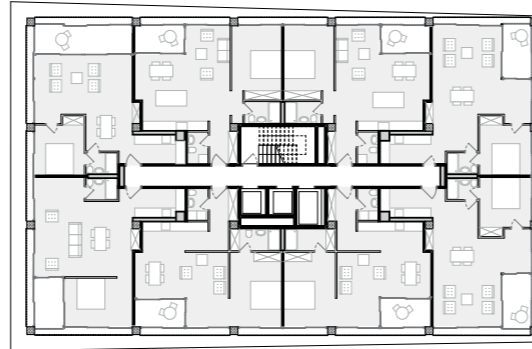
Above the 10th floor every level takes an additional 10 % of CHF / m2 therefore the typologies of each floors adapts to the price. Offering more or less spacious flats to the level.

19 - 20



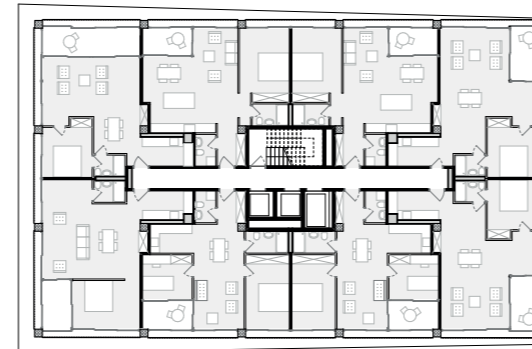
3 room

17 - 18



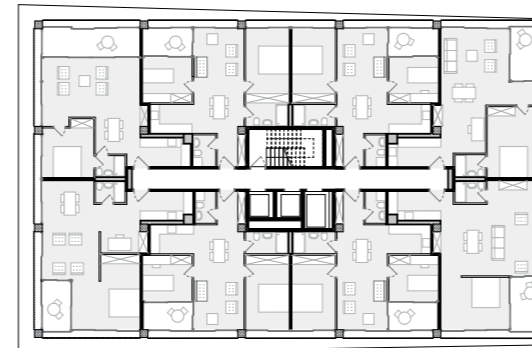
Loft - 2 room

15 - 16



Loft - 2-3 room

13 - 14



Loft - 2-3 room

Typologies 1:100

