

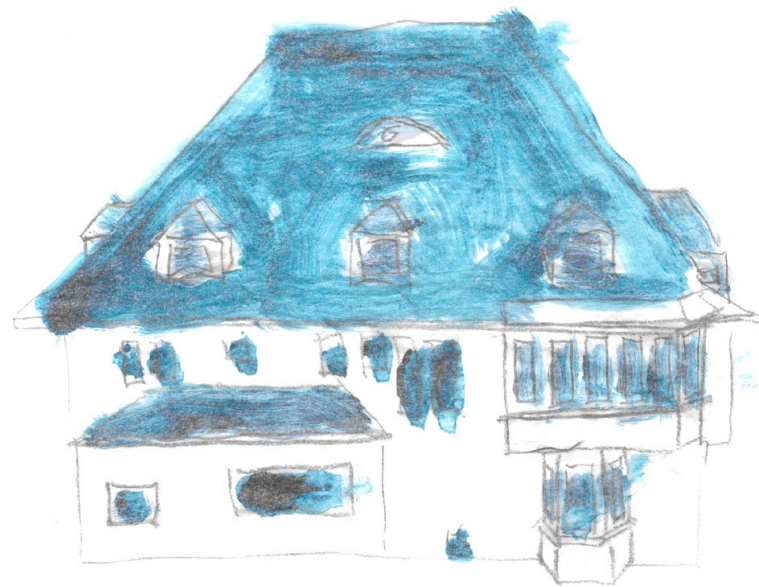
Preparation Phase

Viktor Jörgensen

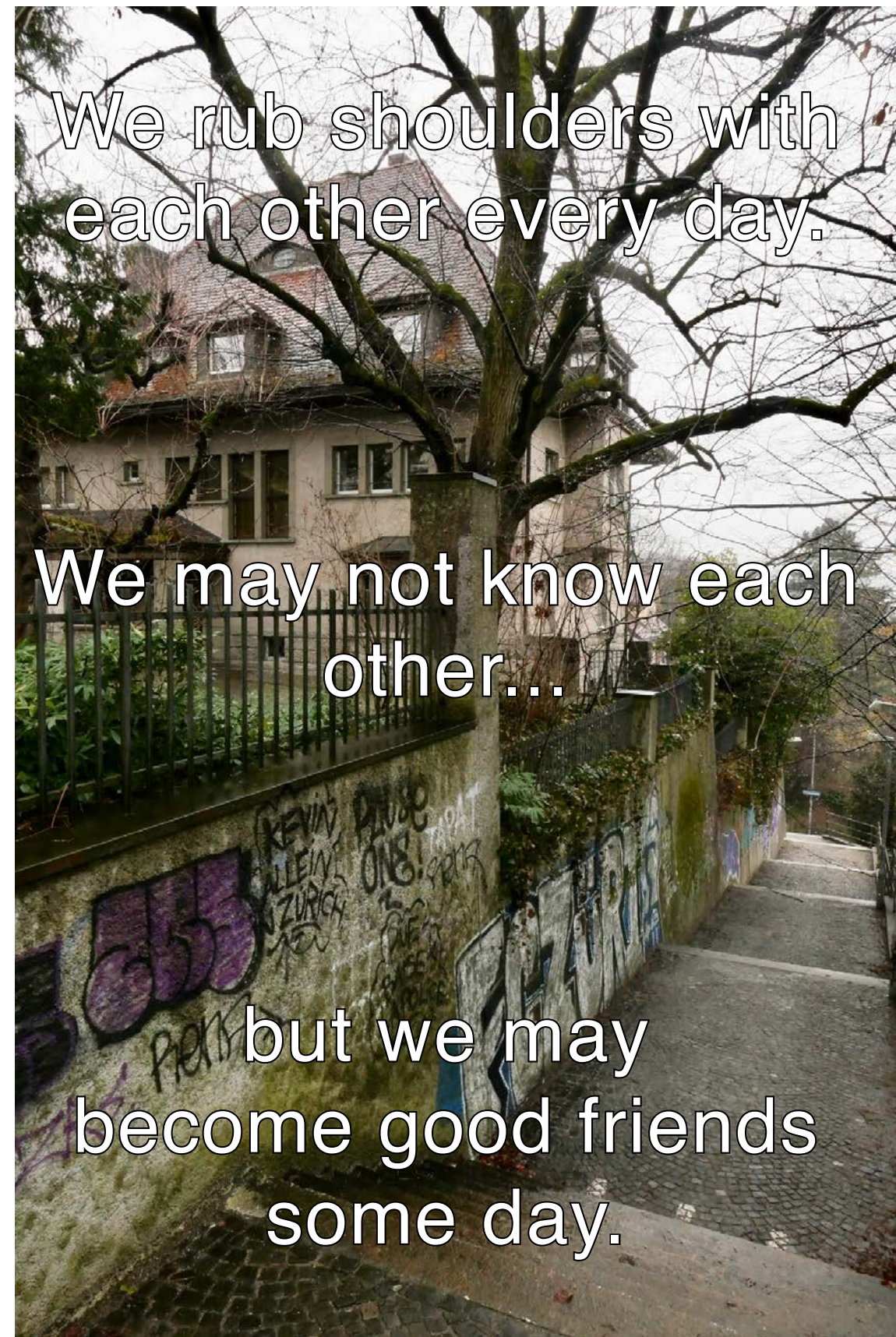
Diploma FS25

Chair of Affective Architectures

ETH Zürich



Photographic site documentation



North facade and public stairs „Himmelsleiterli“

Film quote *Chungking Express*

I know you're in there.

She used to love to dive
out from the closet to
scare me.

Can she be hiding in the
bathroom?

Corridor situation ground floor

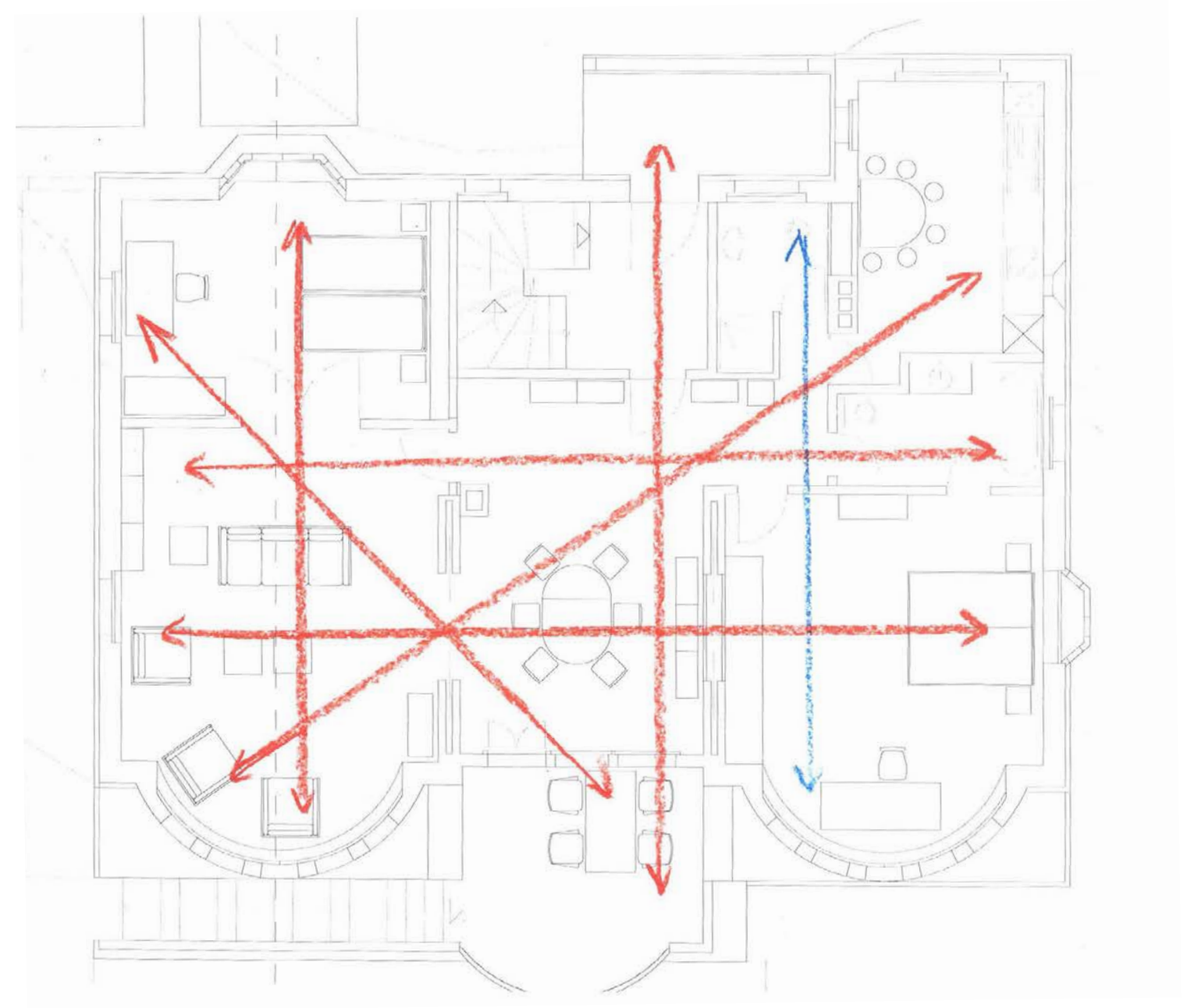
Film quote *Chungking Express*

You know that jogging
is very personal.

How can you possibly
let others see you jog?

Bedroom ground floor

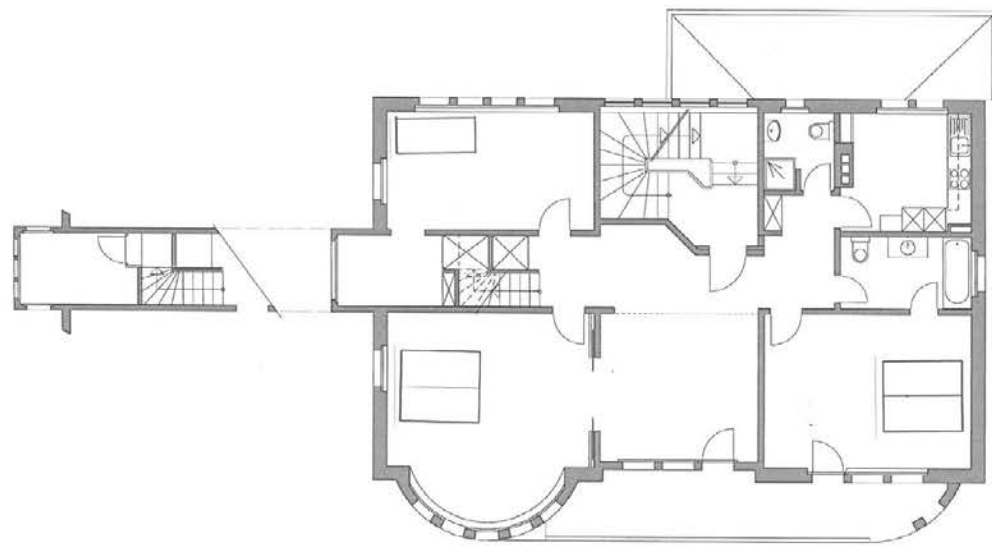
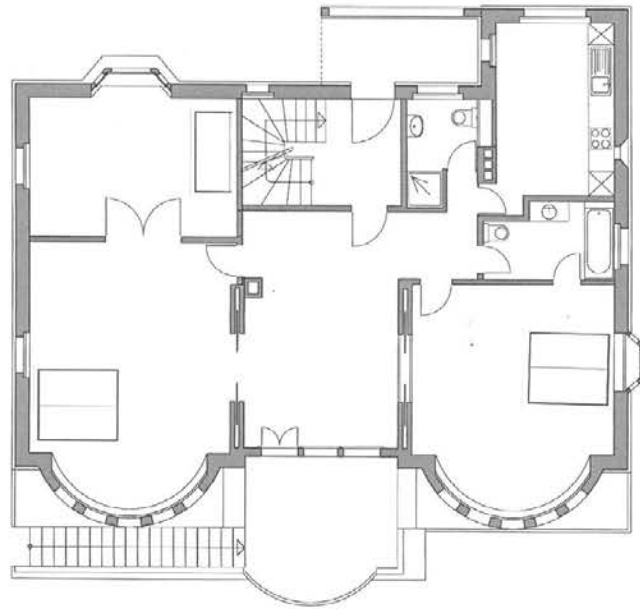
Spatial analysis



Visual axes ground floor

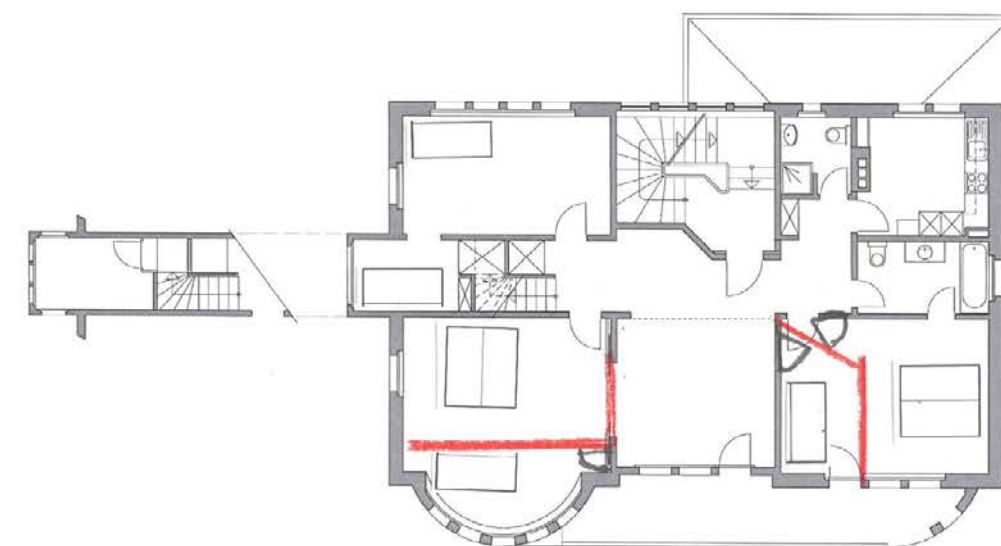
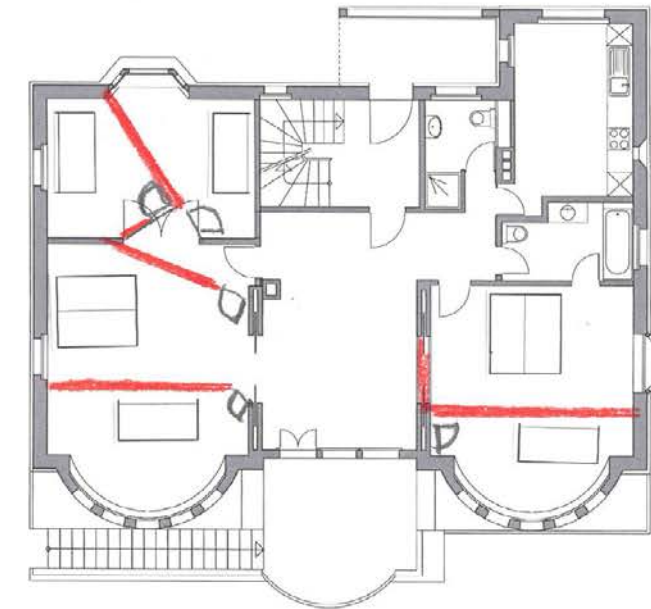
The open floor plan, with its doors placed in alignment, creates multiple visual axes and relationships, often extending beyond the building. This results in a generous space, provided the doors remain open.

How can this feature be preserved while creating more private spaces?



Room proportions

To get a sense of the room proportions, double and single beds are placed in the potential private rooms. While the private sleeping rooms feel quite spacious, the apartment loses much of its sense of openness when the doors to the private rooms are closed.



Dividing rooms

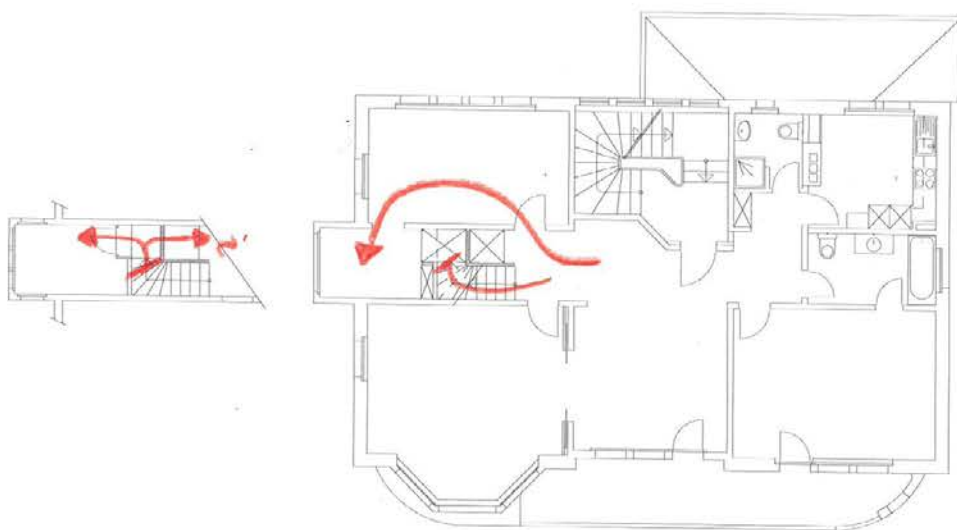
The rooms in the existing floor plan are further divided to host more beds. Most rooms seem too small to be divided. The initial openness of the generous floor plan is now lost. The found plan is characterised by its different room sizes. The rooms should not be made smaller, but smaller, more intimate units could be placed in the generous rooms.



Research questions

How can we live together densely and still experience generous space?

How can architecture allow us to share space collectively while maintaining our personal space?



Poché rooms

On the west facade, a two-storey oriel window volume protrudes the facade on the first floor and extends into the apartment under the roof. The two rooms in this volume belong to the first-floor apartment. The lower room is accessible through a walk-through room, while the upper room is reached by a staircase. The staircase may have once served as a service connection between the two floors but is closed off today.

Georges Perec, 1974

Species of Spaces and
Other Pieces

	space		space	invading
adjoining	space		space	junction
air	space		lack of	
available	space		leave a	
	space	barrier	living	
	space	capsule	lost in	
communal	space		main	
continuous	space		negative	
	space	covering	no	
	space	collision	a moment in	
	space	claiming	open	
deep	space		ordered	
discovery of	space		personal	
edges of	space		position in	
enclosed	space		private	
entering a	space		qualitative	
experienced	space			saving
facade	space		staring into	
	space	filter	taking	
free	space		time in	
giving	space			type
getting	space		unnecessary	
	space	heating	visual	
imaginary	space		wasted	
inbetween	space		watch this	
inner	space		wide open	
intimate	space			

Alkoven in einem Willingshäuser Bauernhaus, Hermann Söndermann, 1886



Rethinking sleeping space

Is the bedroom of hardly any more importance than the broom closet?

Elaboration Phase

Viktor Jörgensen

Diploma FS25

Chair of Affective Architectures

ETH Zürich



Facade Model

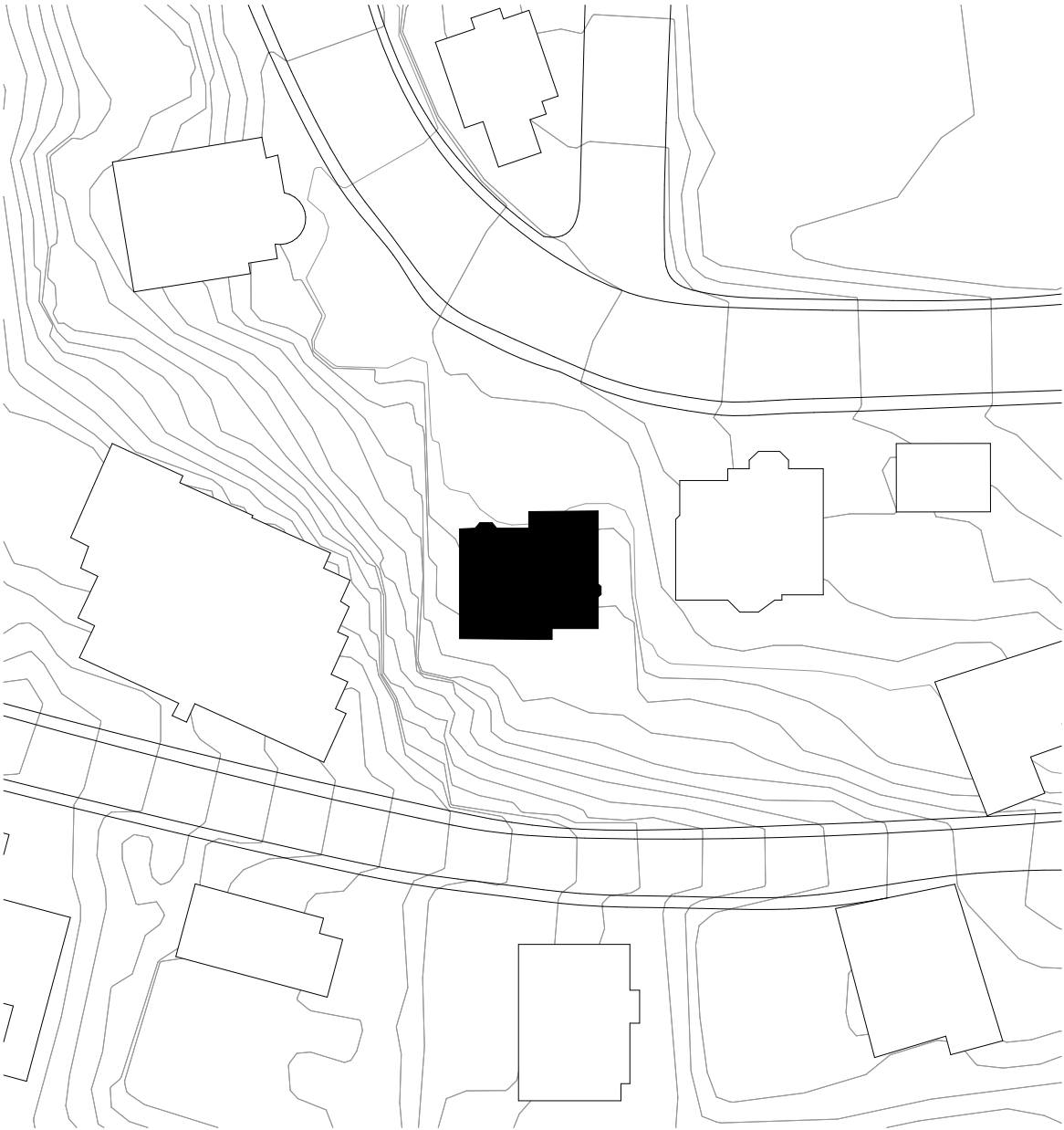


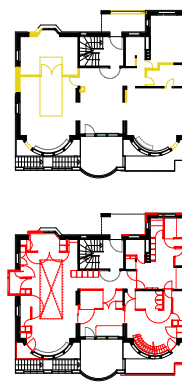
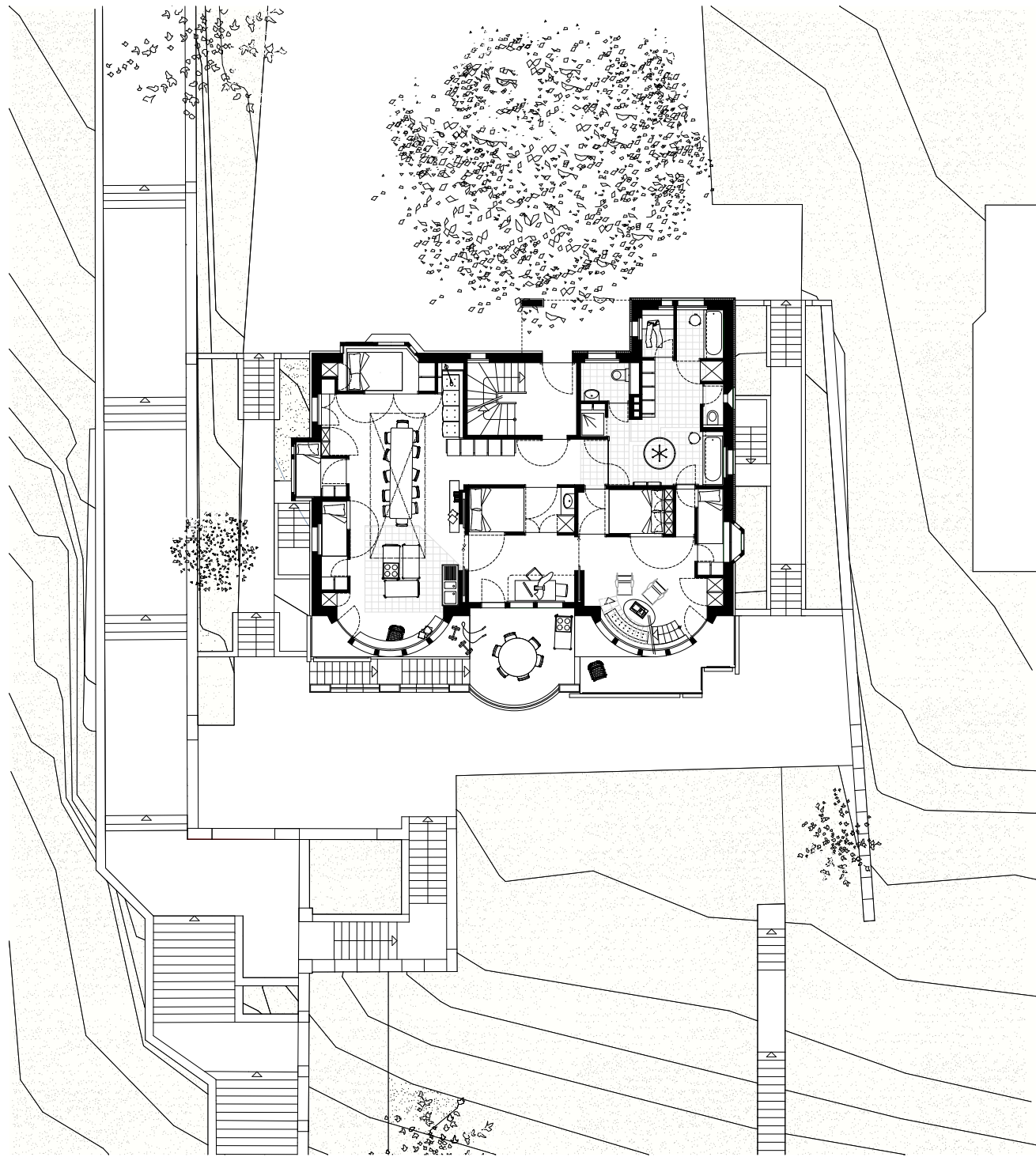
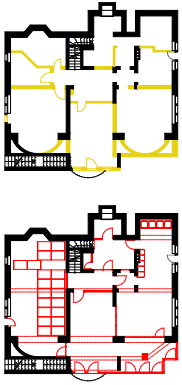
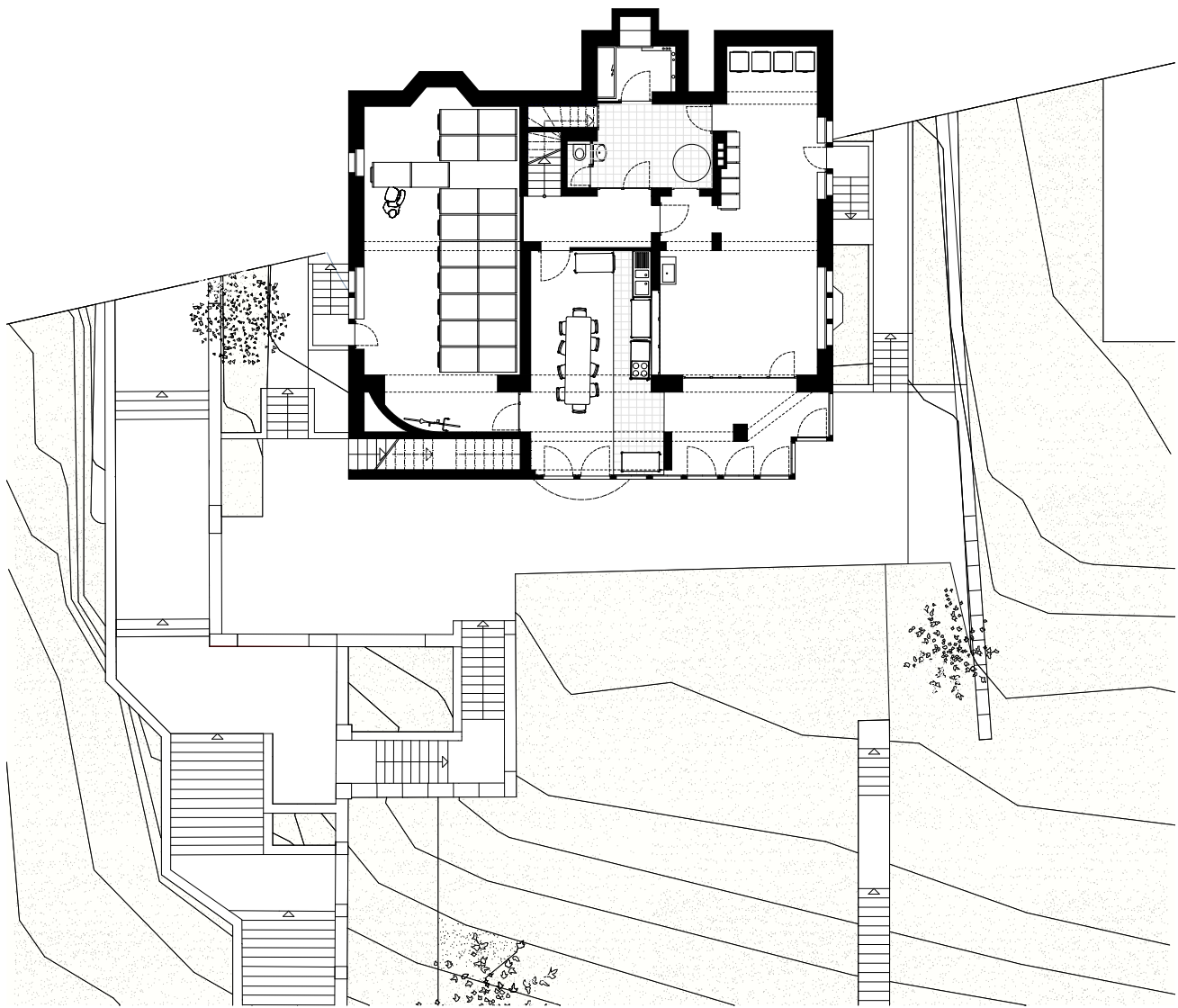


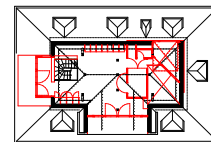
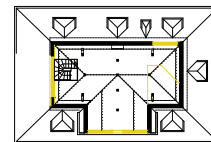
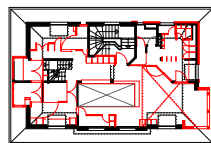
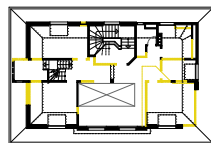
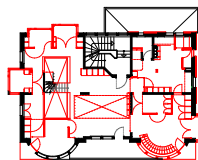
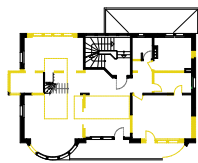
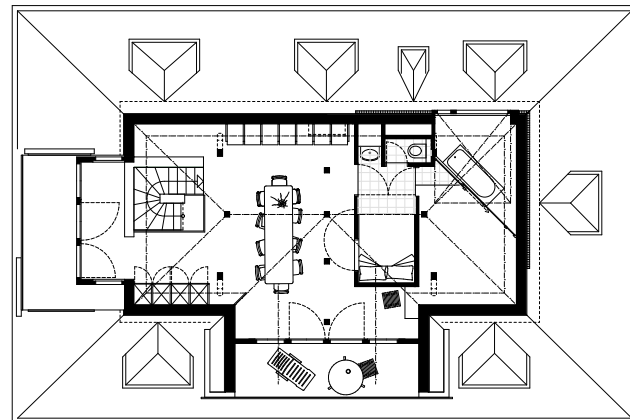
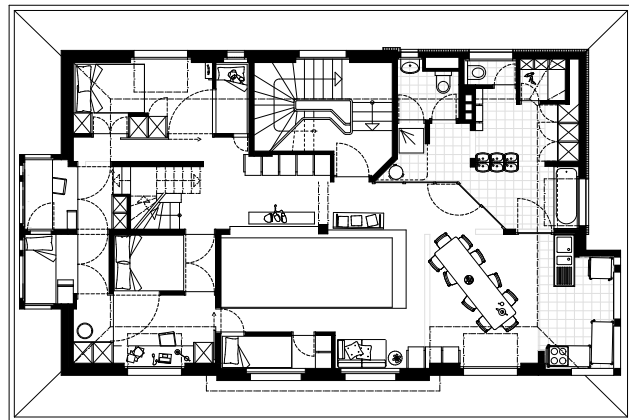
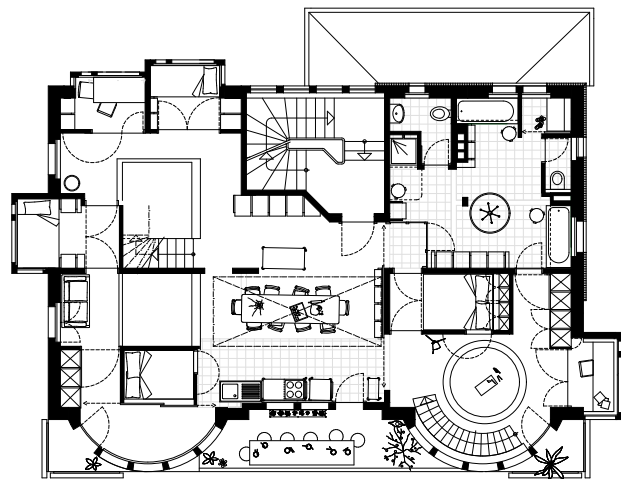




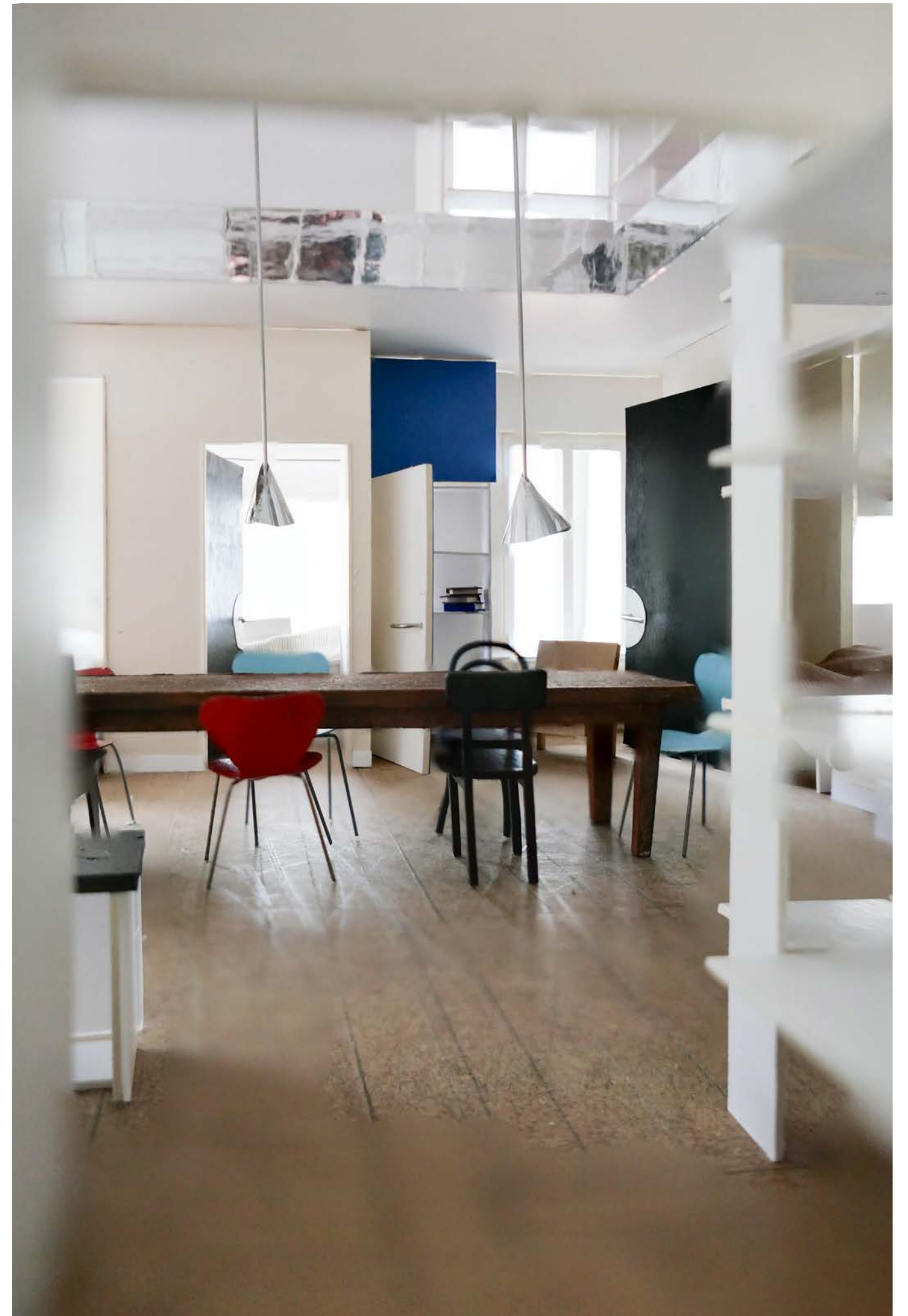
Plans



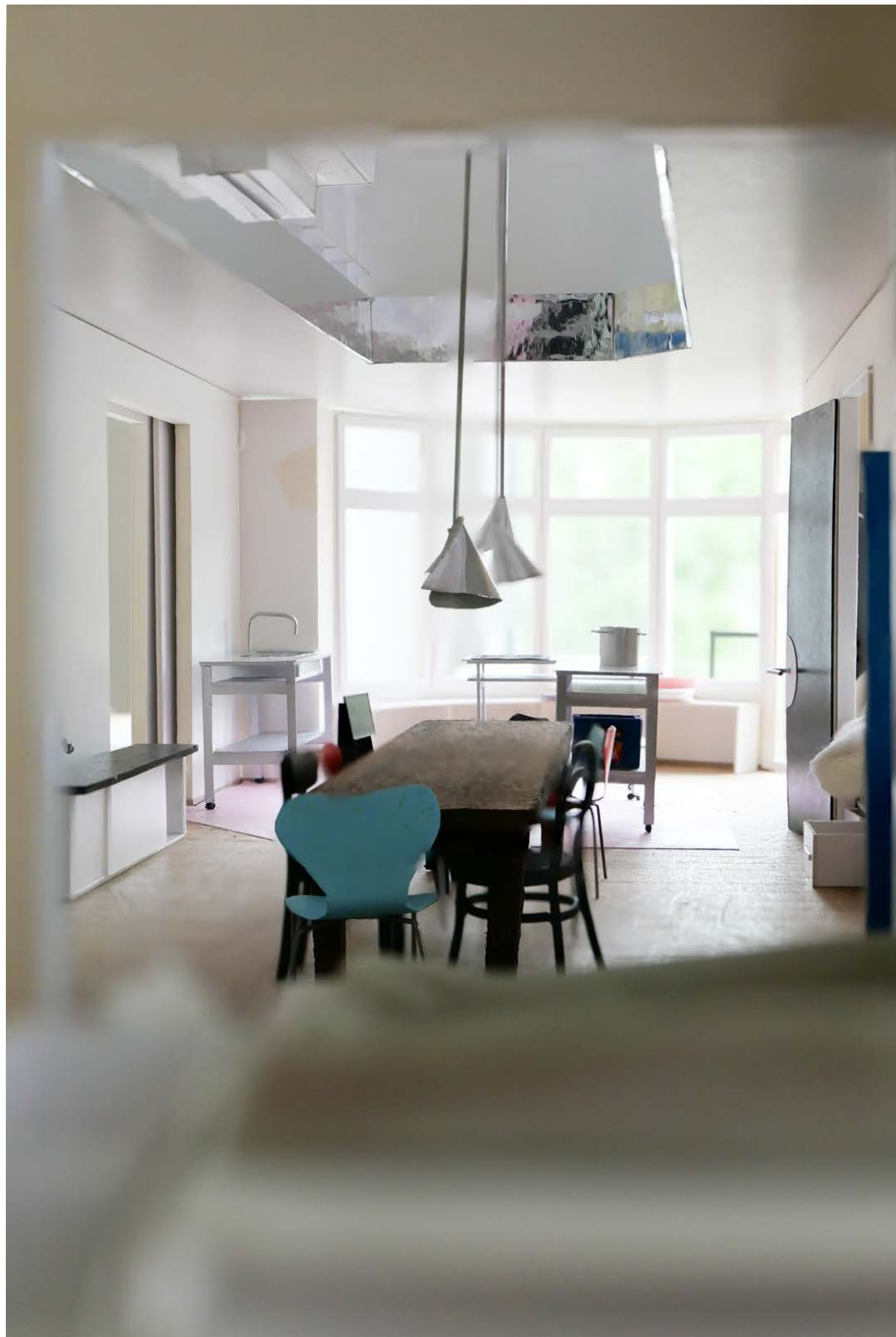




Interior photographs

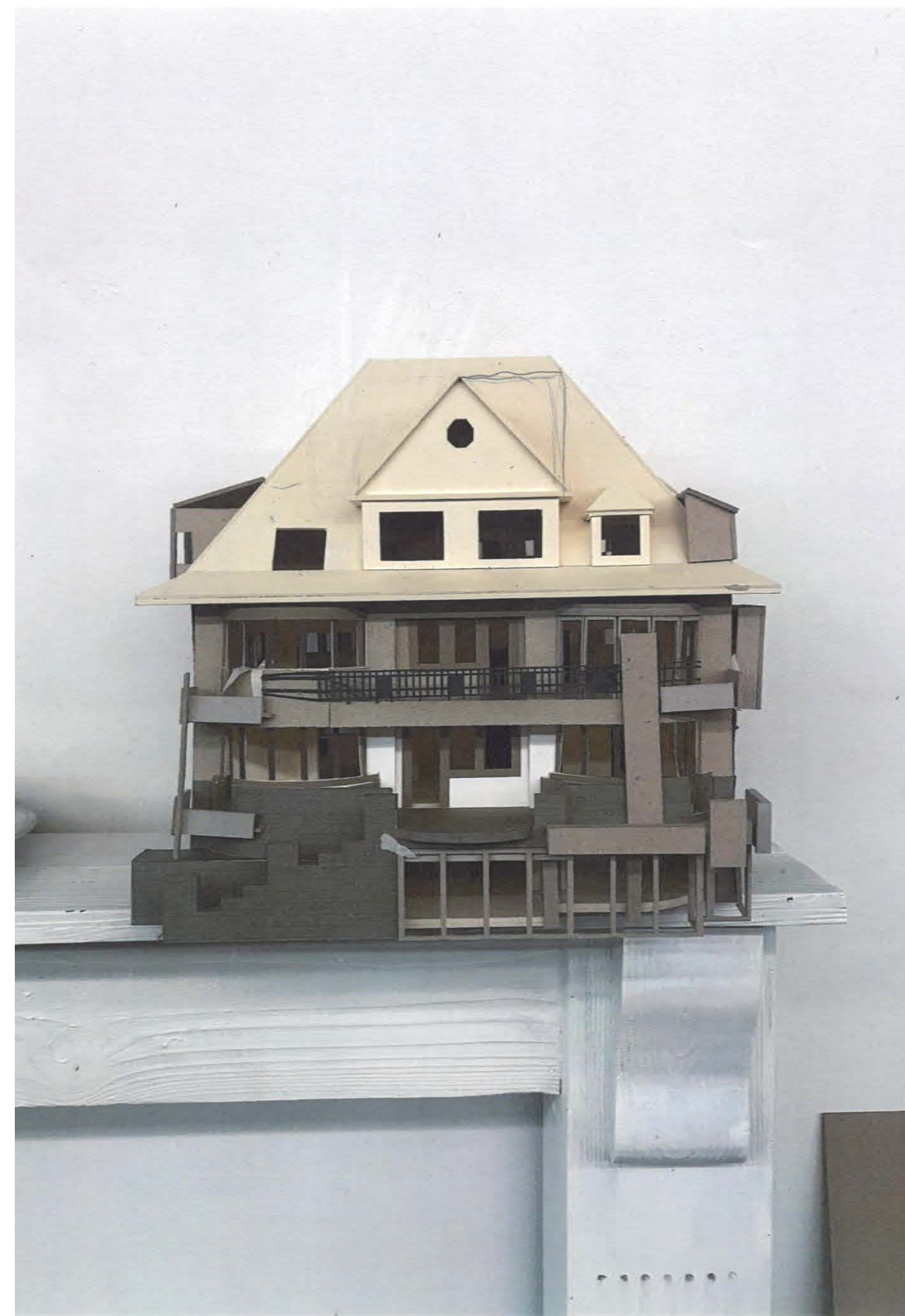


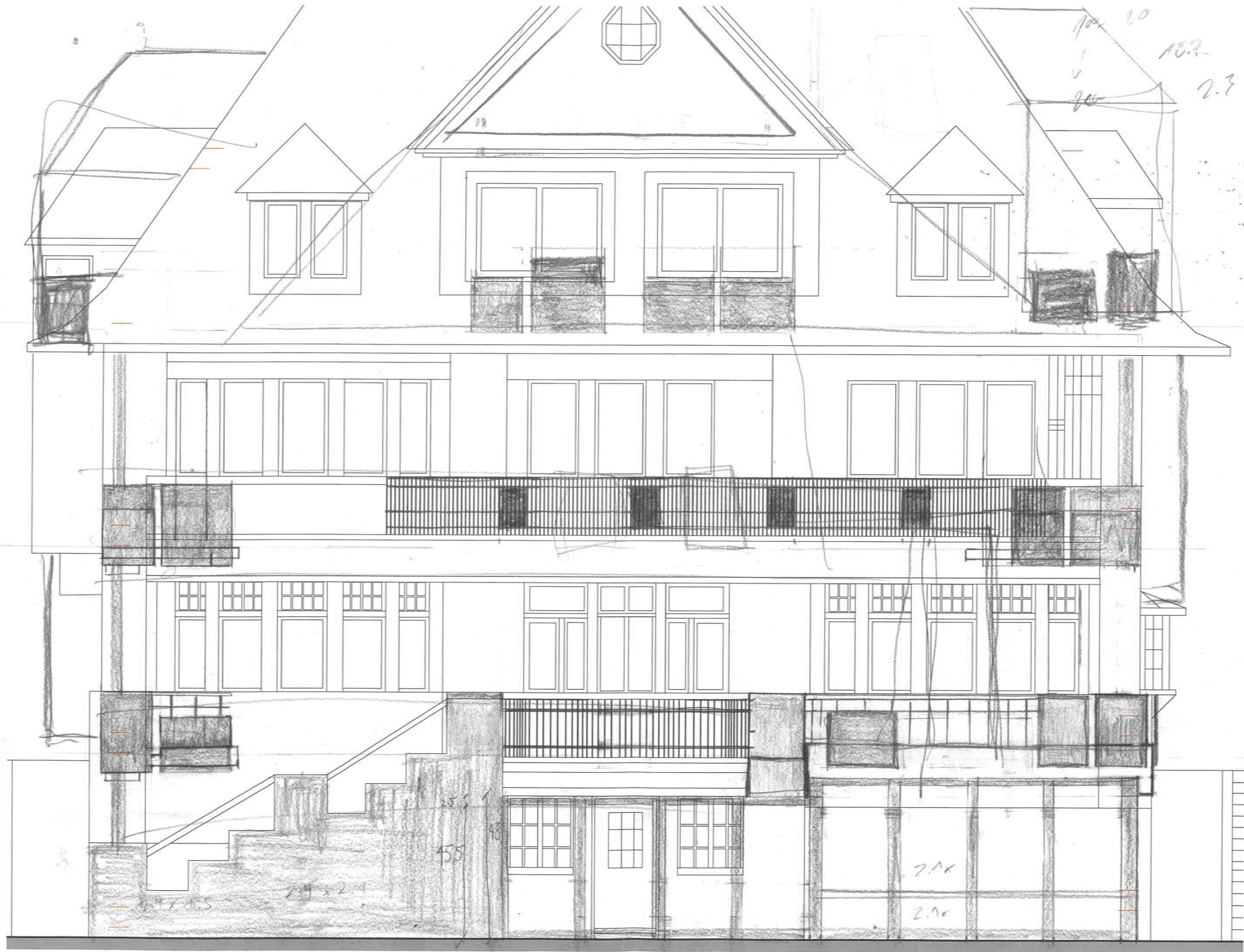


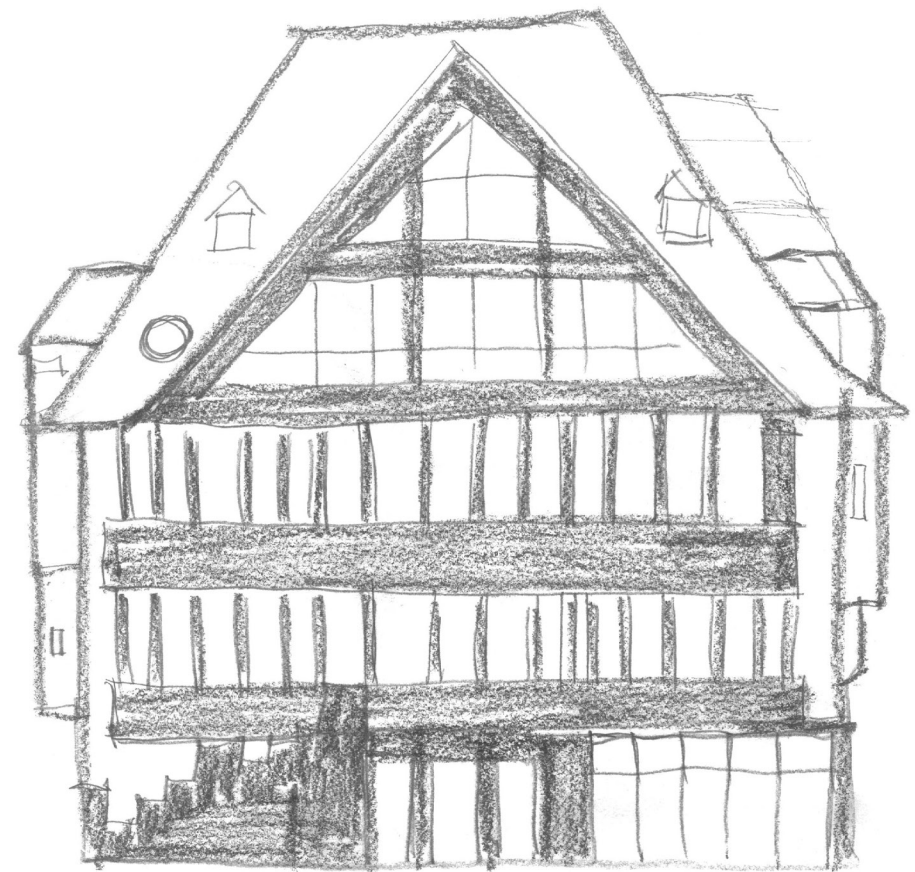
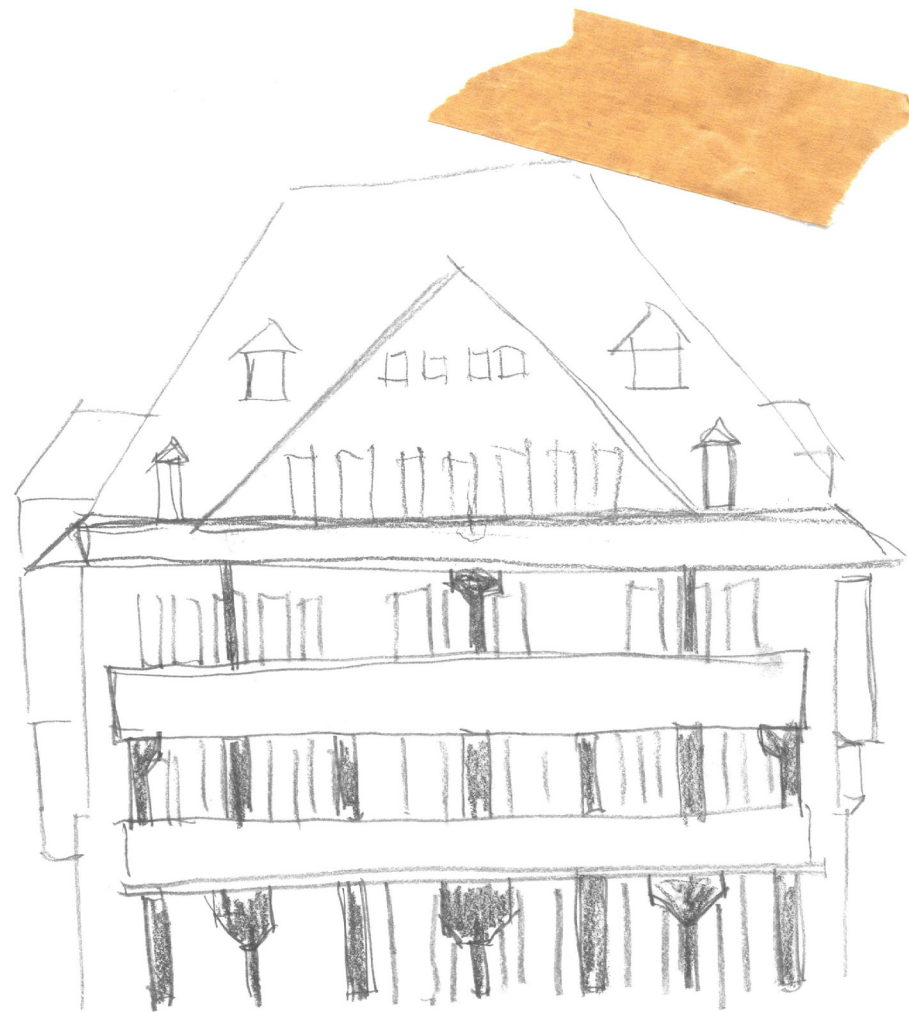


Process



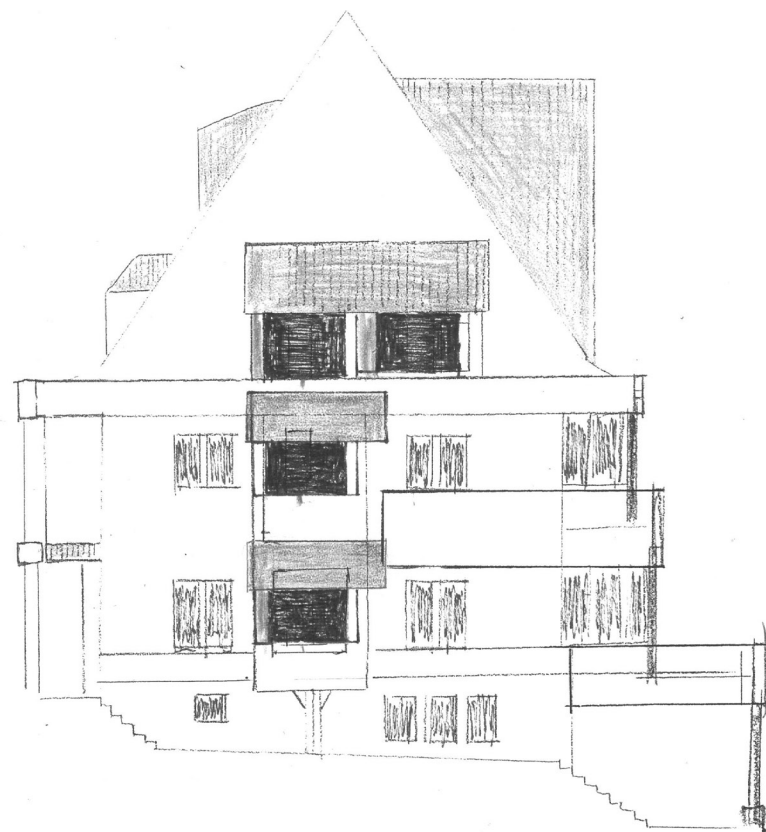








6.8 7.3 x 6.1 5.6



1.2.80

1.2

2.2

3.8

