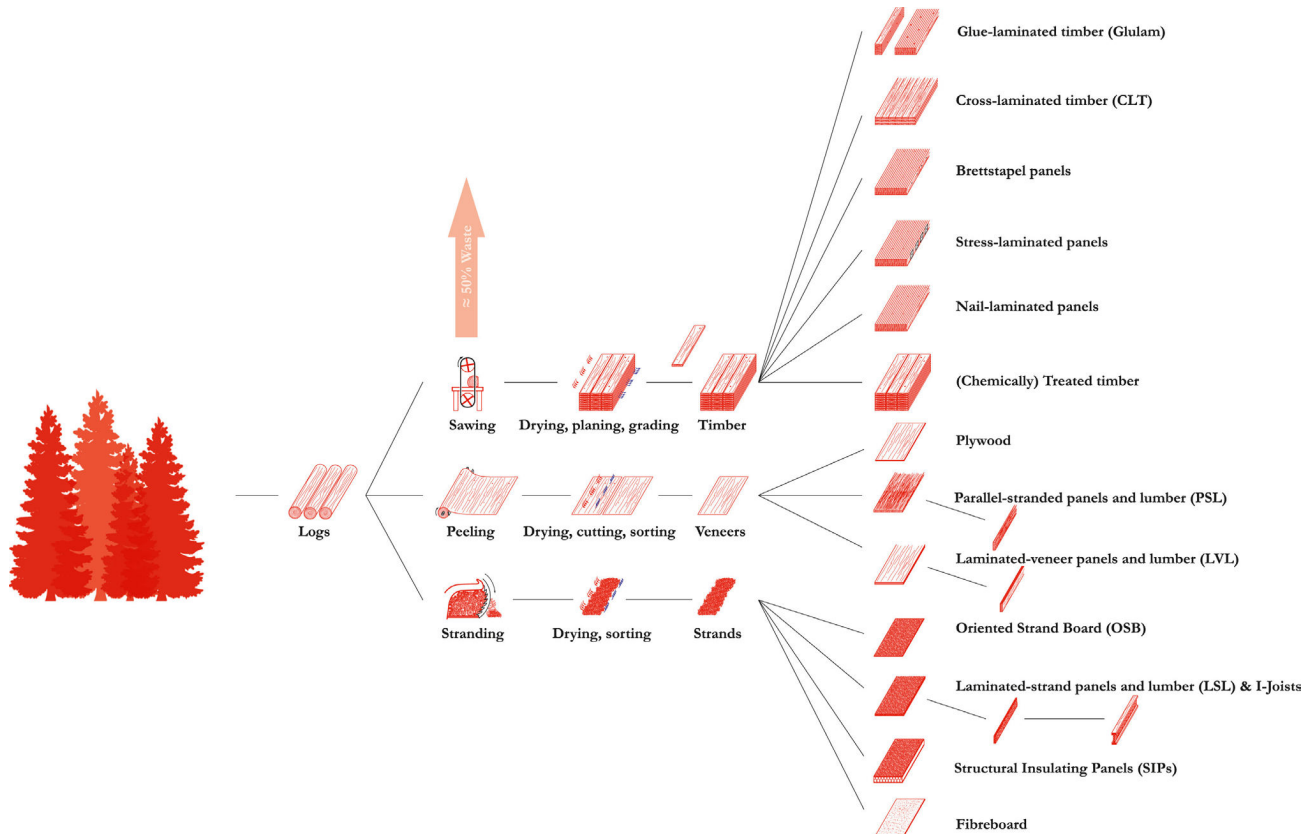
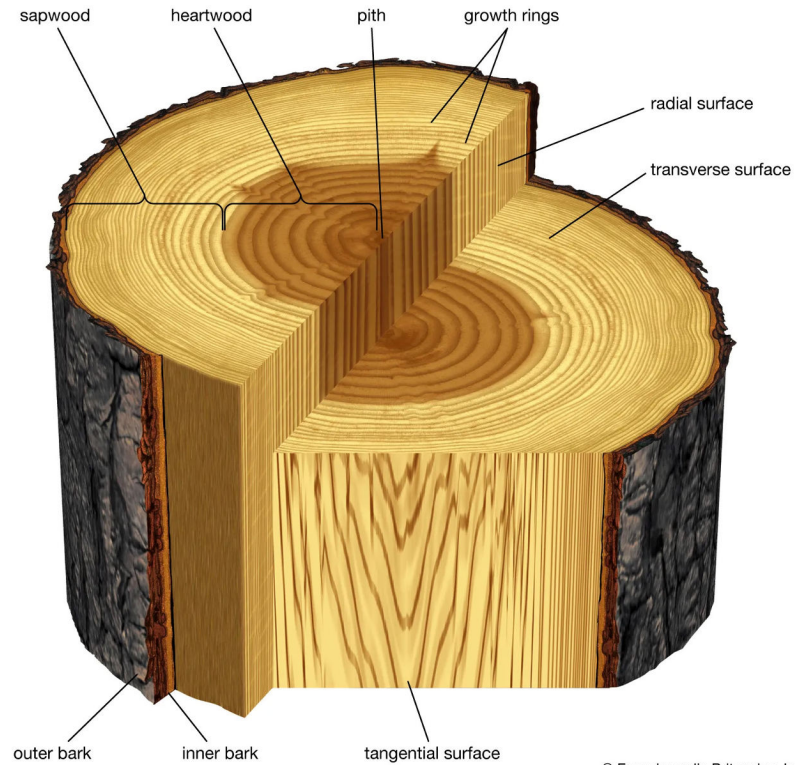


MATERIAL - WOOD



From the forest to the construction pieces

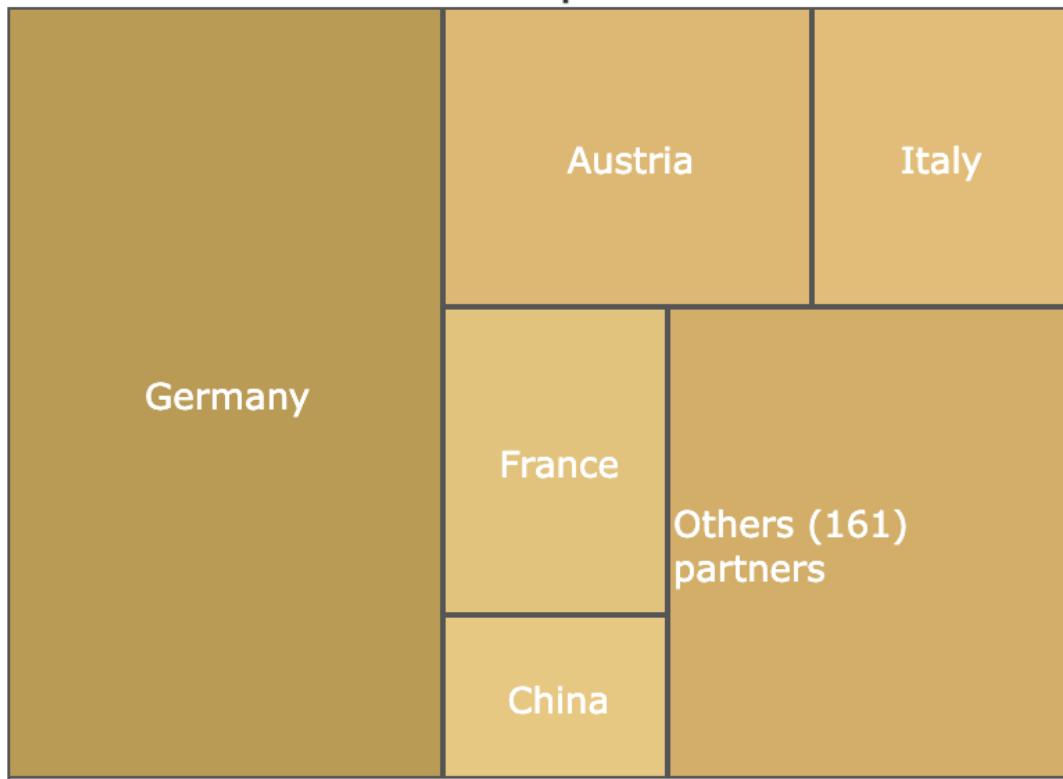
Anatomy of a tree trunk



© Encyclopædia Britannica, Inc.

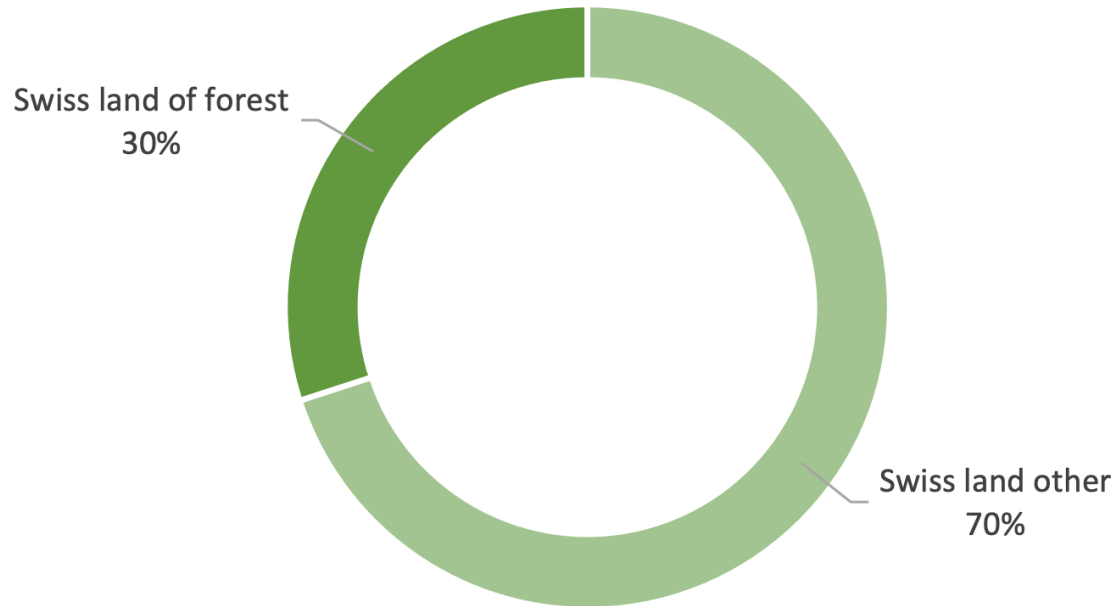
Anatomy of a tree trunk

Switzerland 2022 Import Partner Share

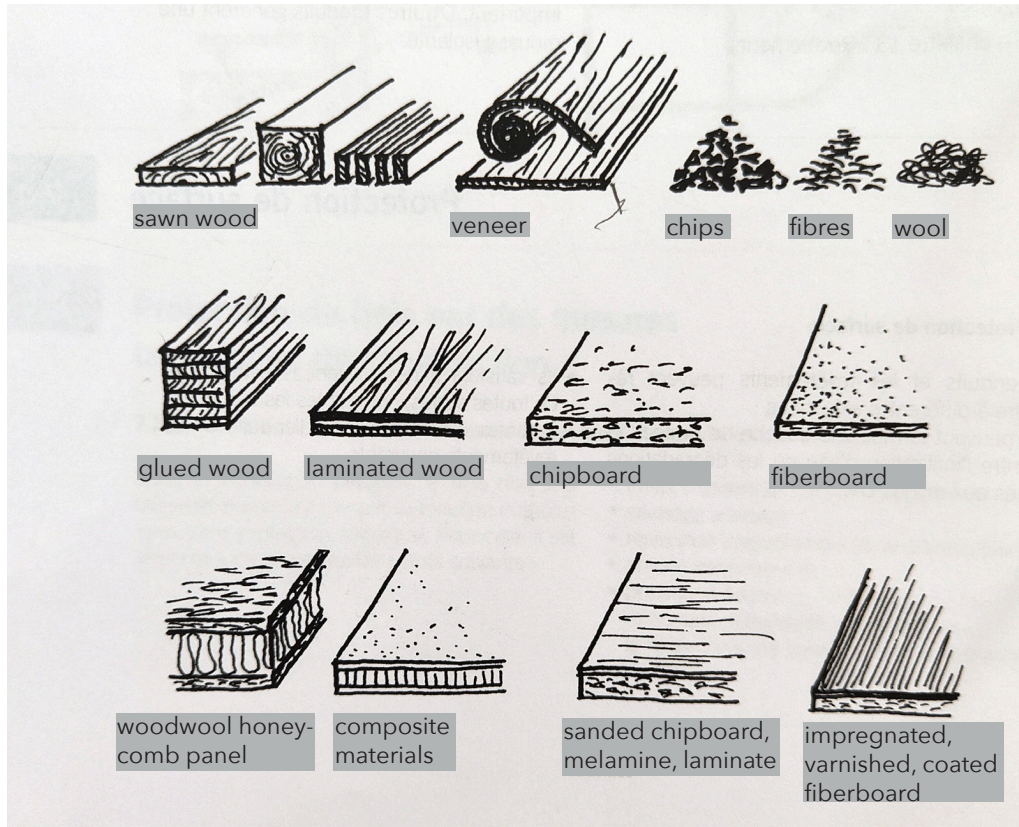


Wood importation in Switzerland in 2022, WITS

1/3 of the Swiss land is composed of forest land



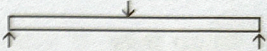
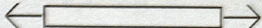
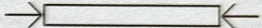
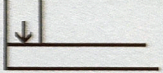
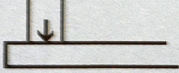
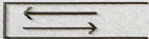

Swiss land percentage,OFS



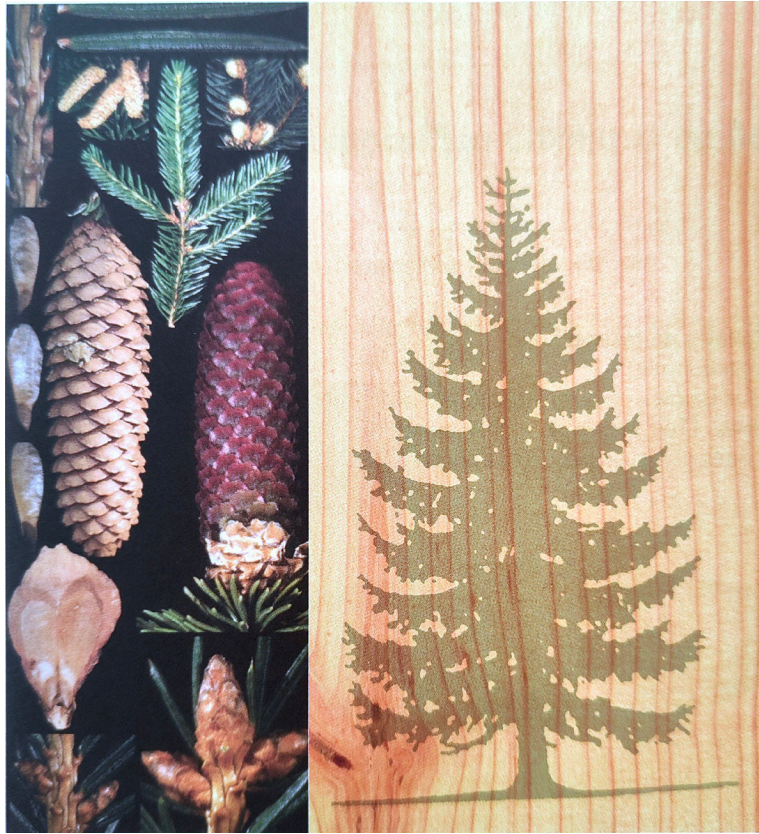
Wood types, lignum

Essence de bois	Densité apparente du bois séché à l'air en kg/m ³
Épicéa	460
Sapin	470
Pin sylvestre	520
Mélèze	580
Chêne	690
Hêtre	740

Dried wood density, lignum

Type de sollicitation	N/mm ²	Utilisation	Schéma
Flexion, tension aux limites	14	poutres, pannes et chevrons	
Traction longitudinale	8	tirants, pincés	
Compression longitudinale	12	poteaux, étais	
Compression transversale sans avant-bois	1,8	piliers, pannes, semelles	
Compression transversale avec avant-bois	2,3	appuis, pannes, sous-longerons	
Cisaillement	1,5	hauts piliers	
Cisaillement avec des embrèvements	dépend de l'angle	embrèvements	

Type of wood stress and resistance, lignum



Spruce



Fir tree



Larch tree



Scotch pine



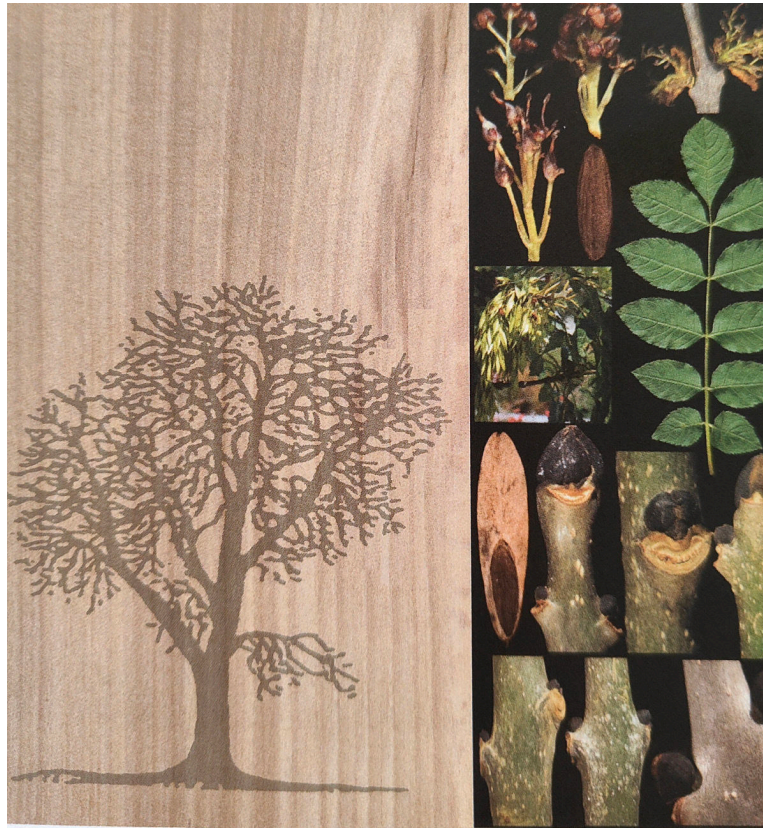
Arole tree



Beech



Oak



Ash tree



Maple



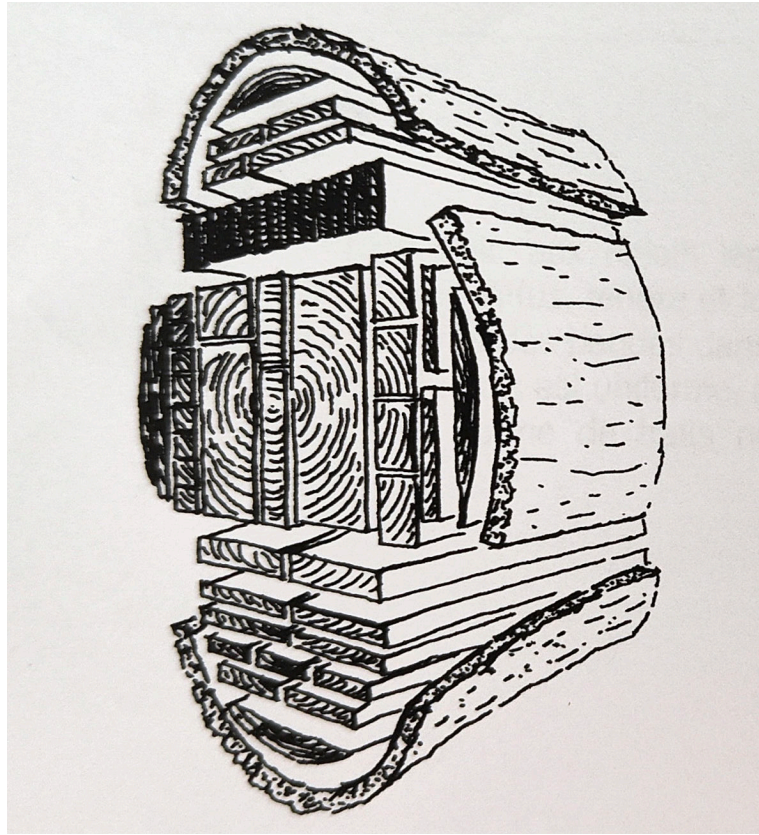
Chestnut



Walnut



Cherry tree

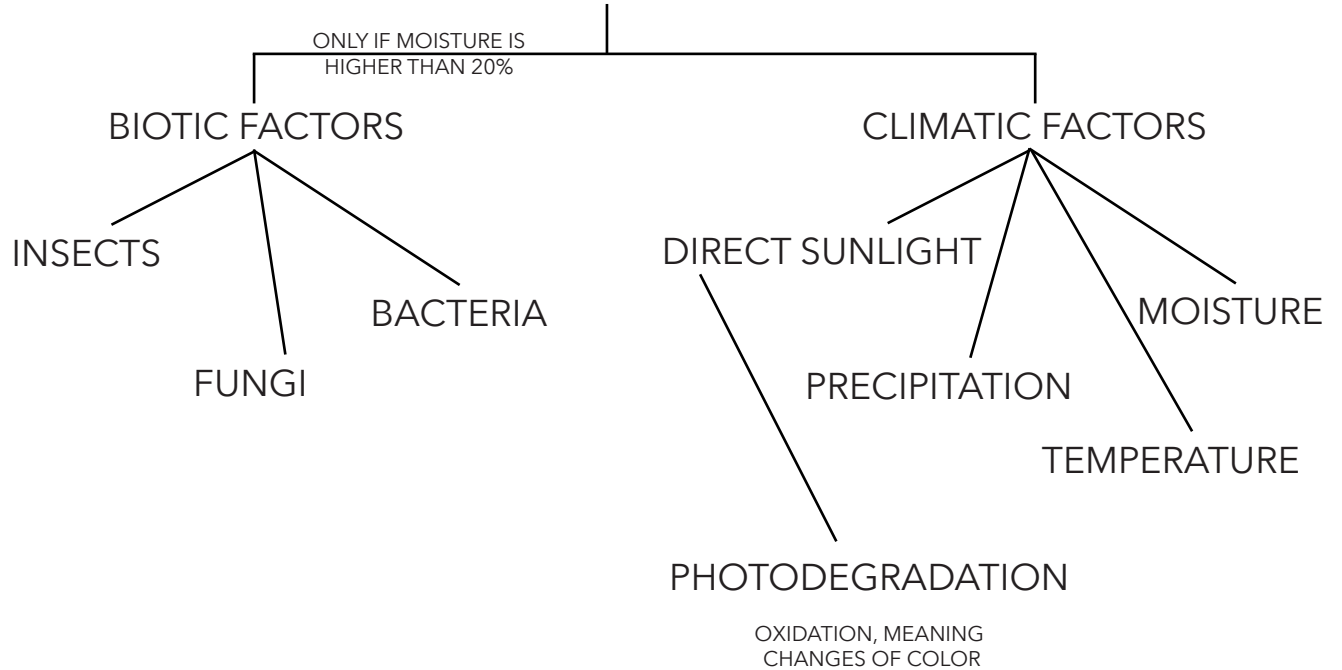


Types of cutting into the trunk of the tree, lignum



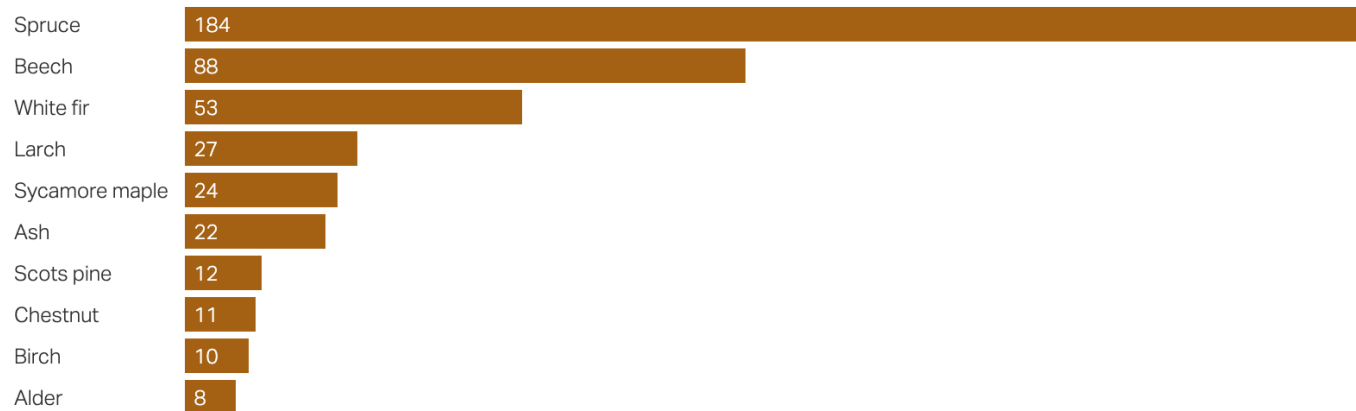
Spruce ageing color

WOOD AGEING



The spruce is the most common tree in Switzerland

The ten most common types of trees in Switzerland (in millions)



Source: [National forest inventory](#) • [Get the data](#)