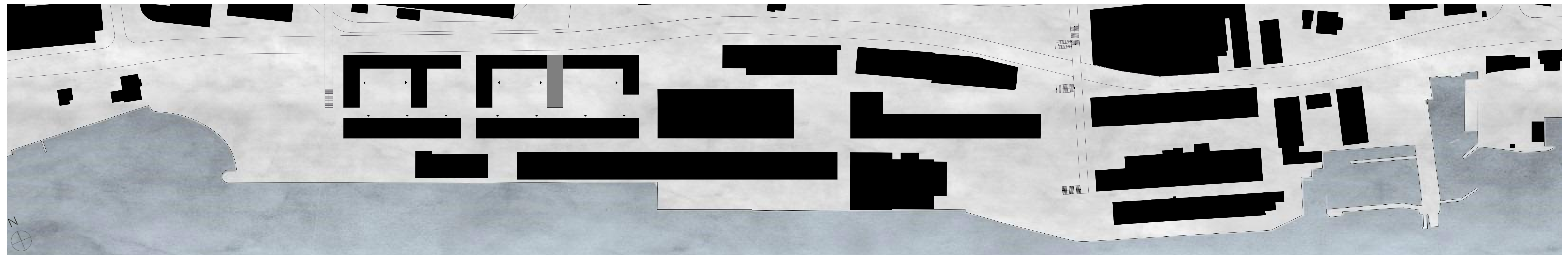
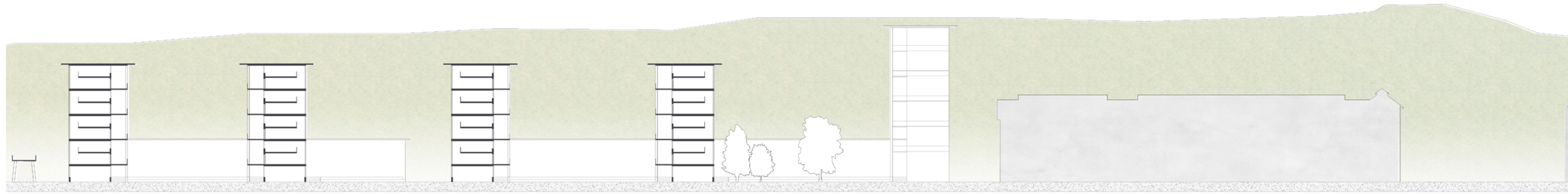


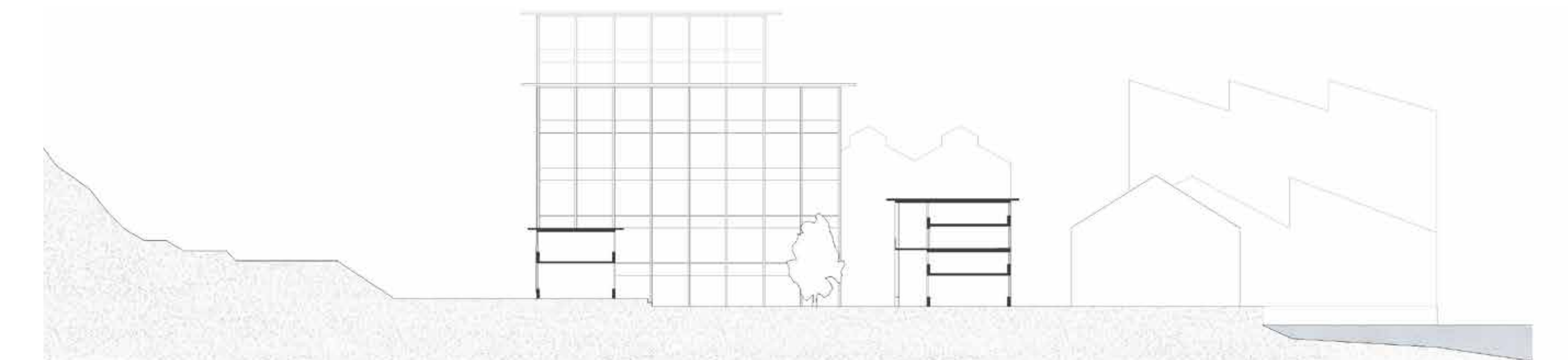
Wohnbau Uetikon am See



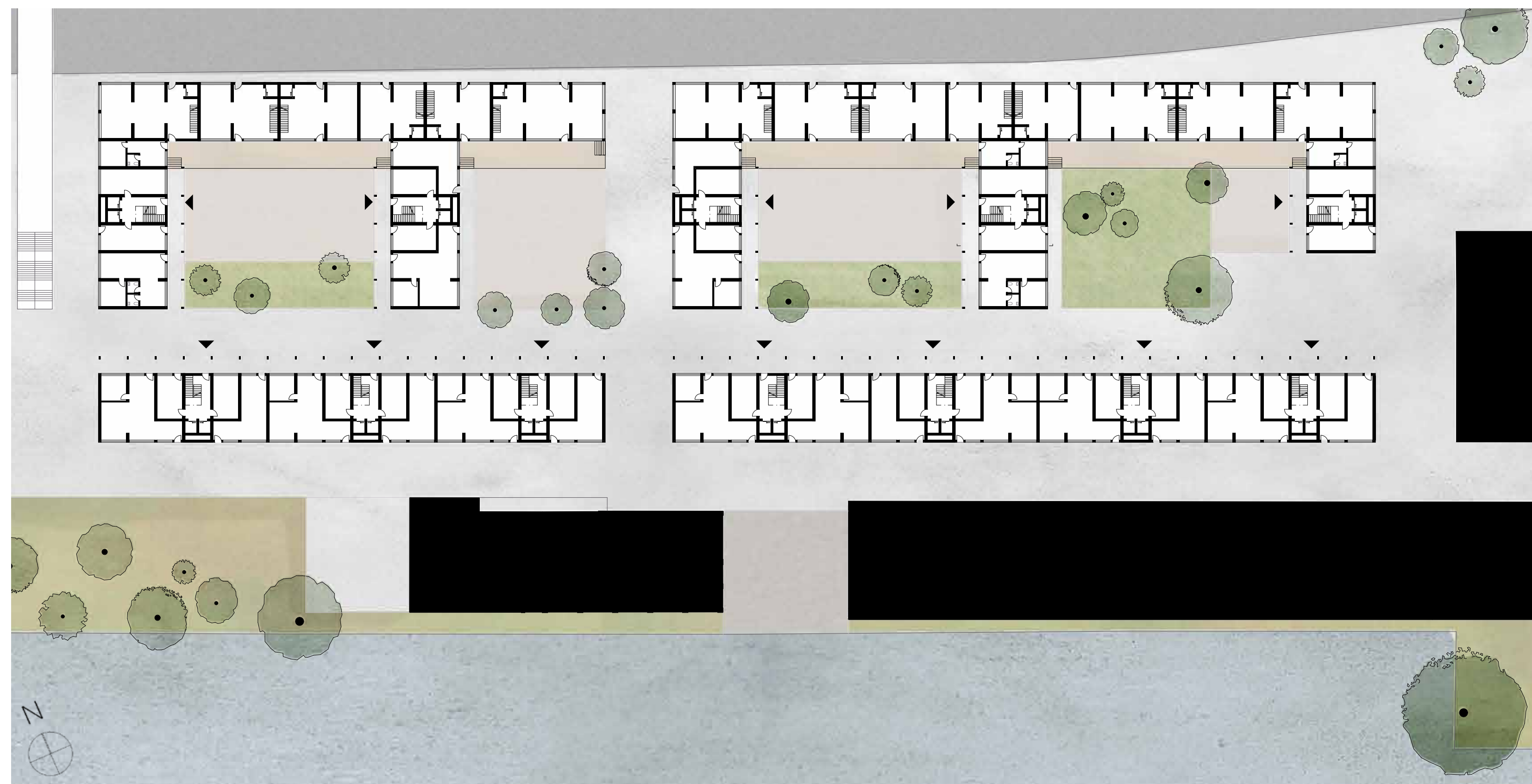
Schwarzplan Industriereal Uetikon am See 1:1000



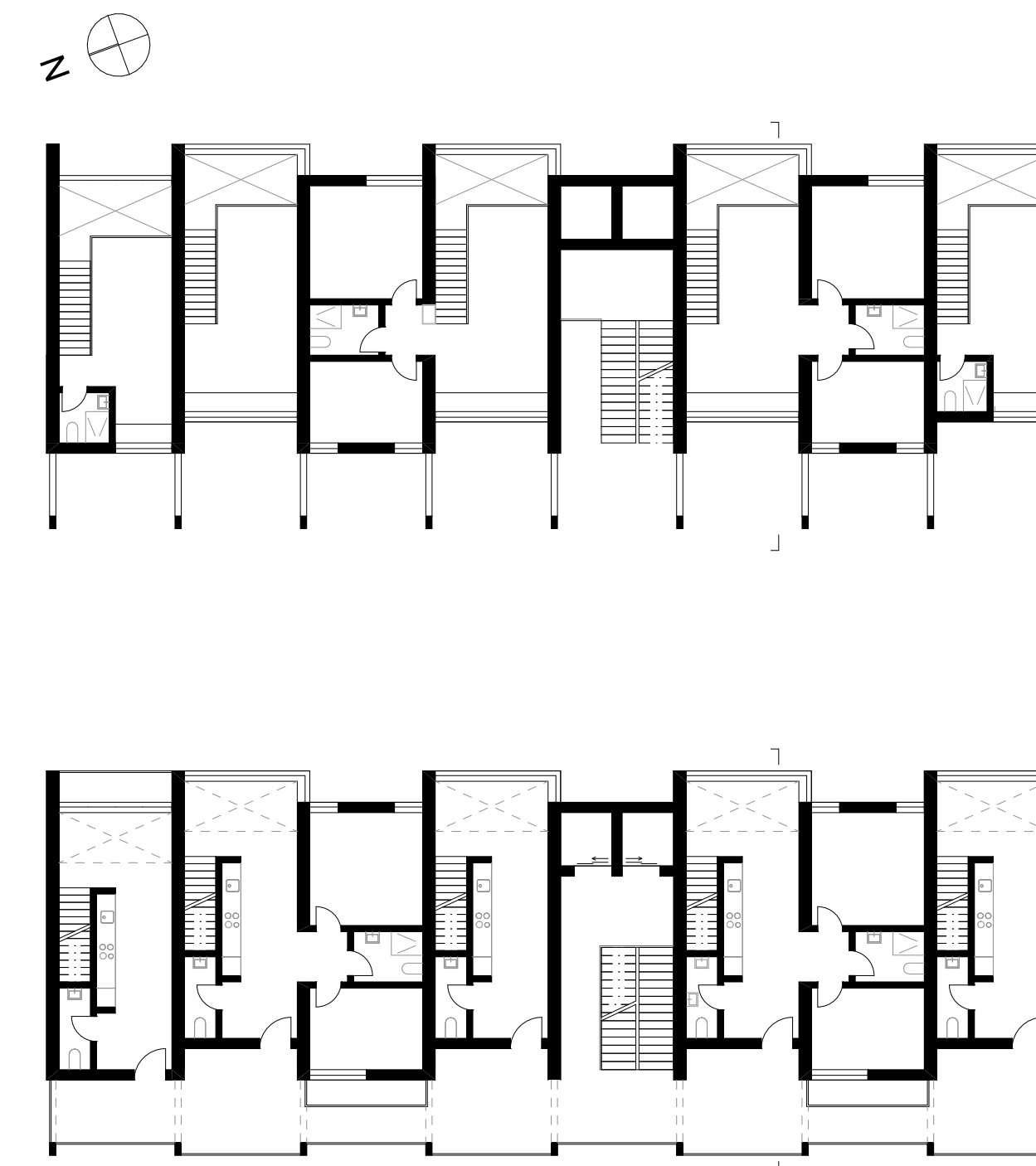
Längsschnitt Baufeld West & Ost 1:500



Querschnitt Baufeld Ost 1:500



Erdgeschoss 1:500



1 & 2 Wohngeschoss 1:200



Querschnitt 1:200

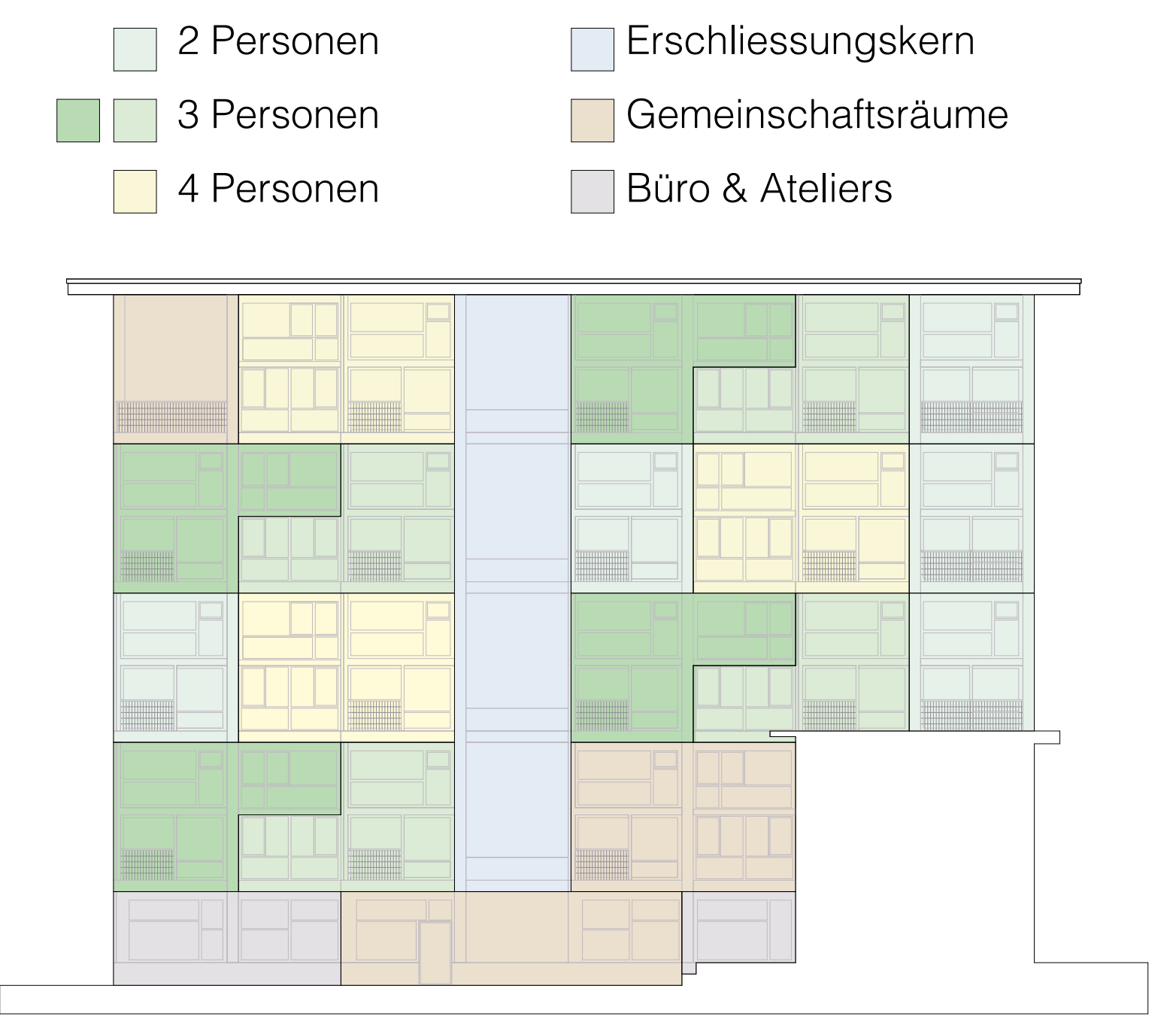
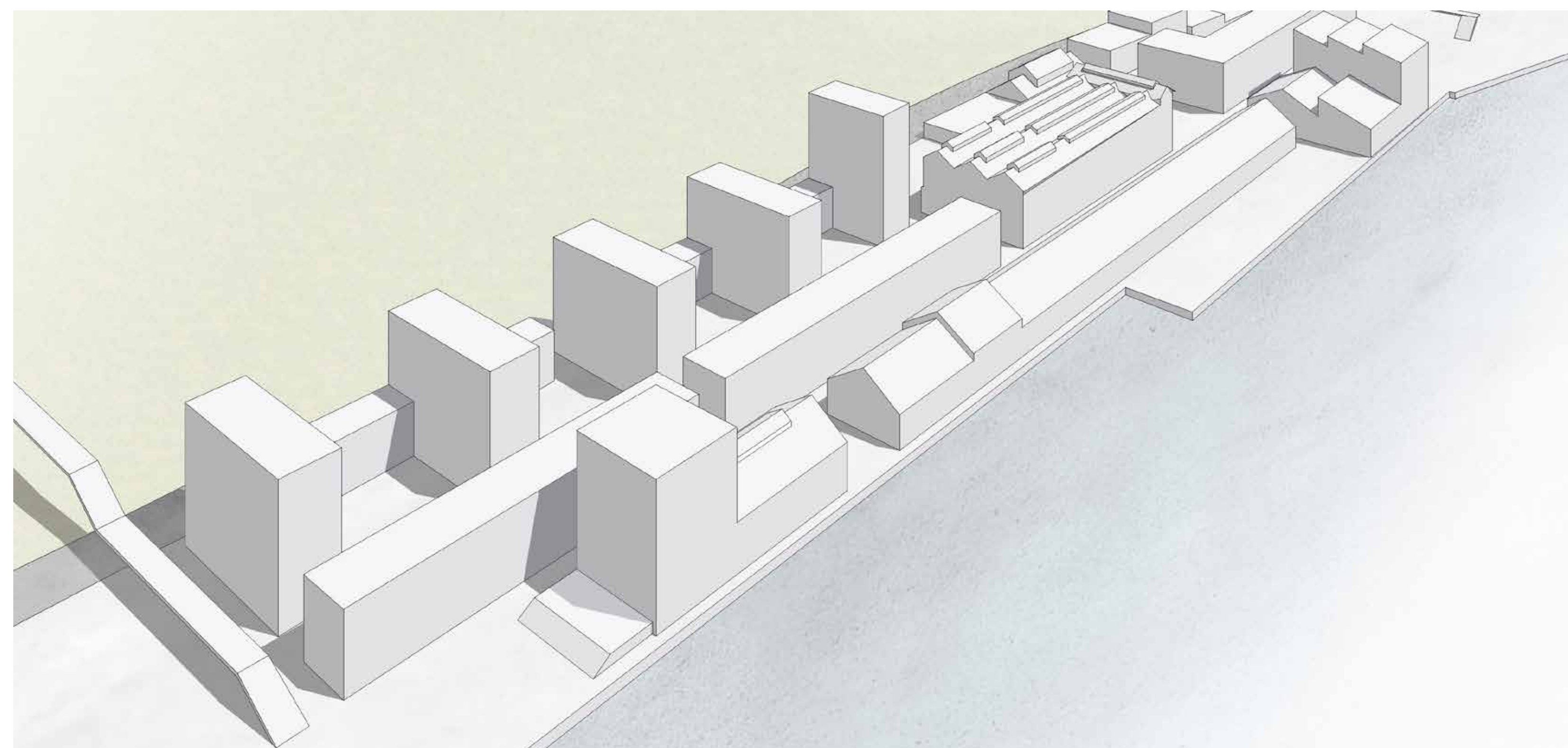
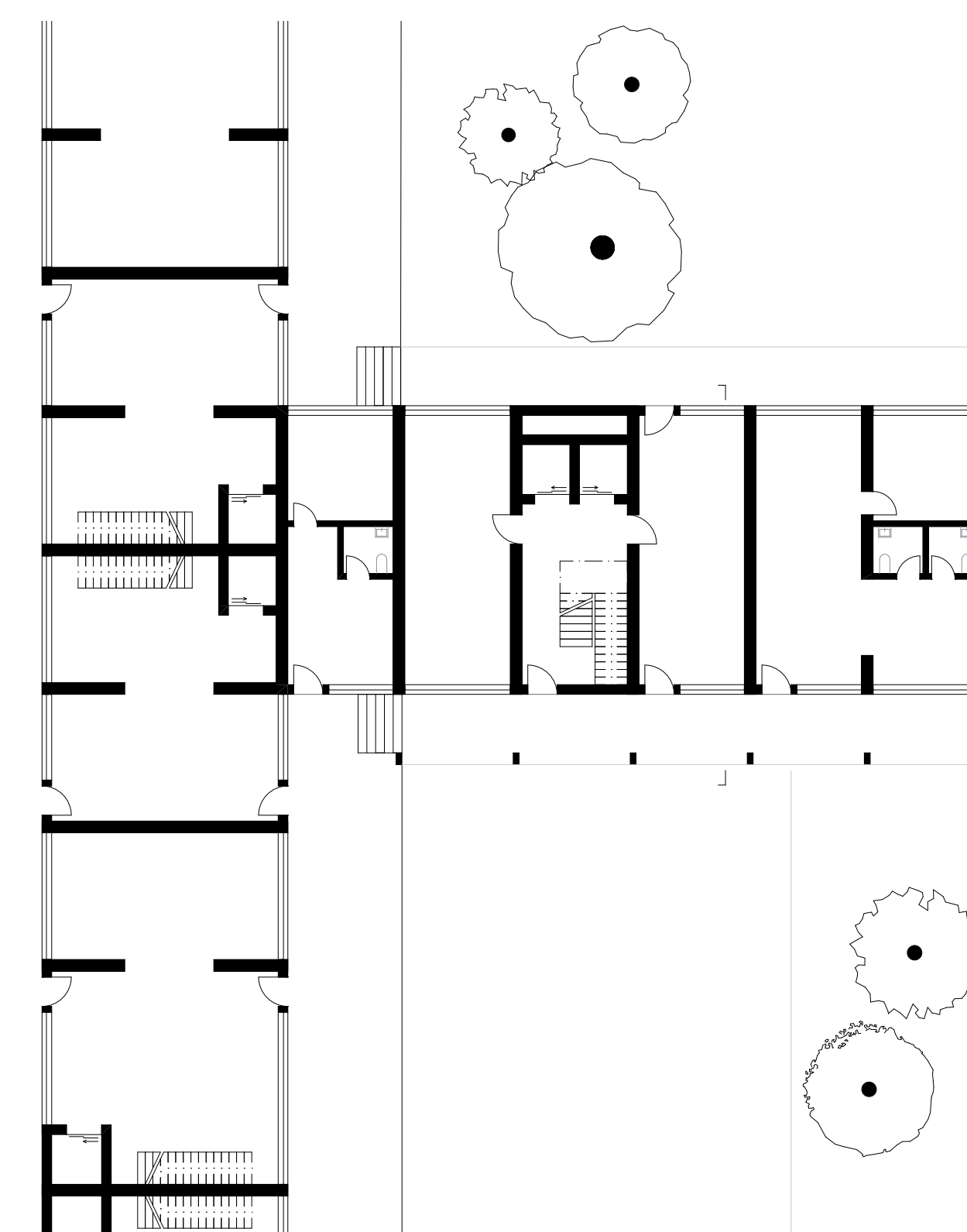


Diagramm Wohnungen



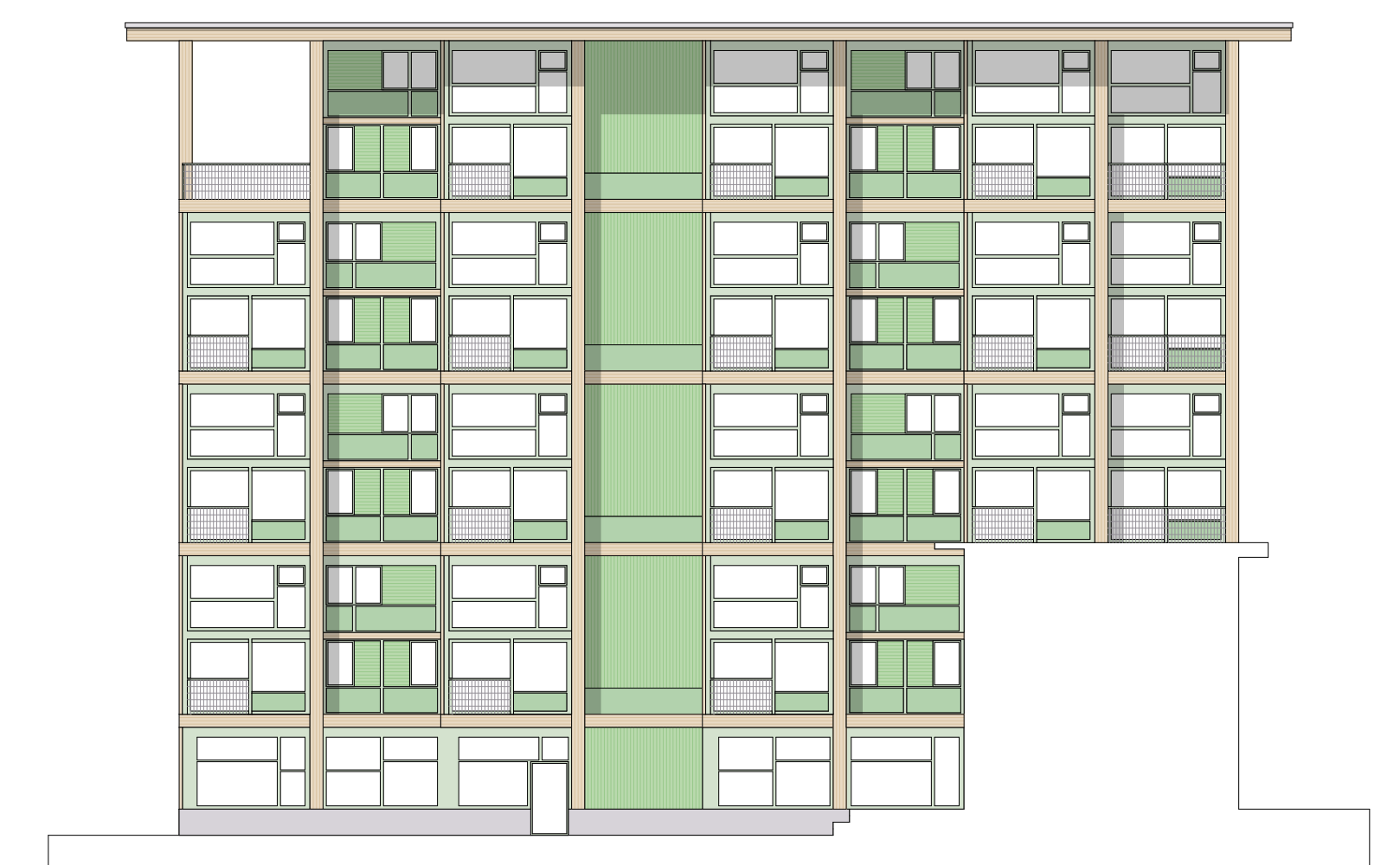
Vogelperspektive Industriereal Uetikon am See



Erdgeschoss 1:200

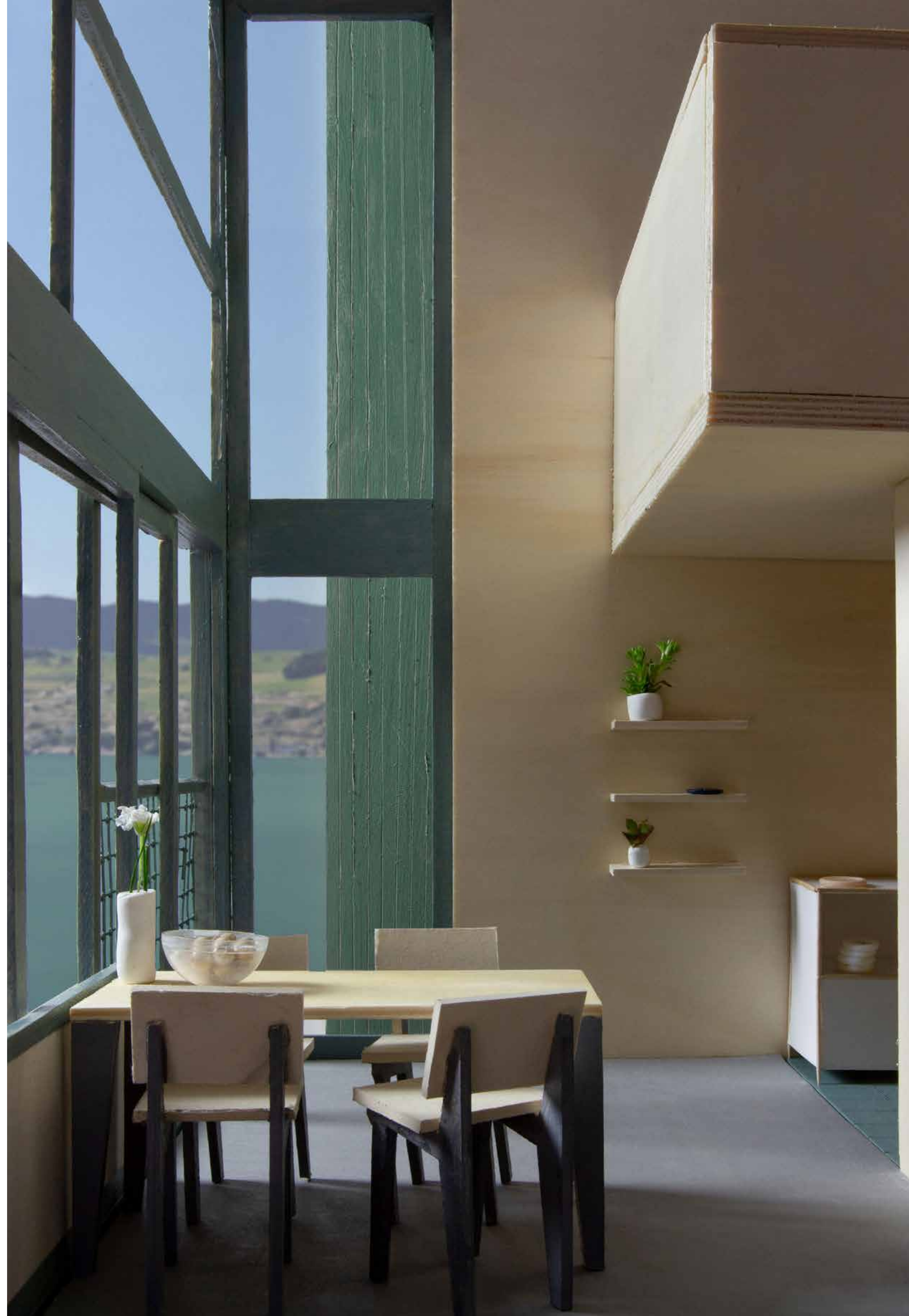


Ansicht Fassade West 1:200

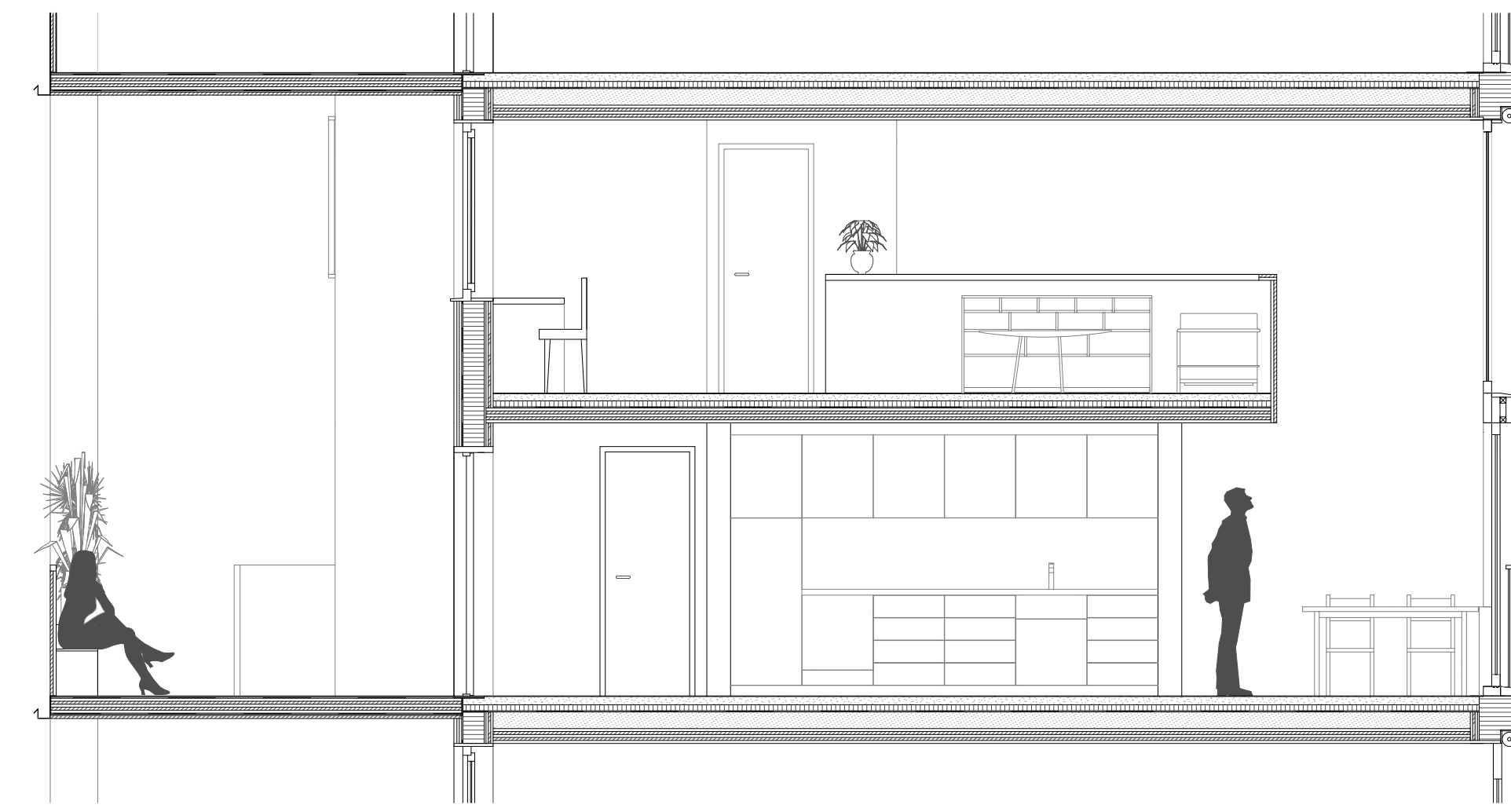


Ansicht Fassade Ost 1:200

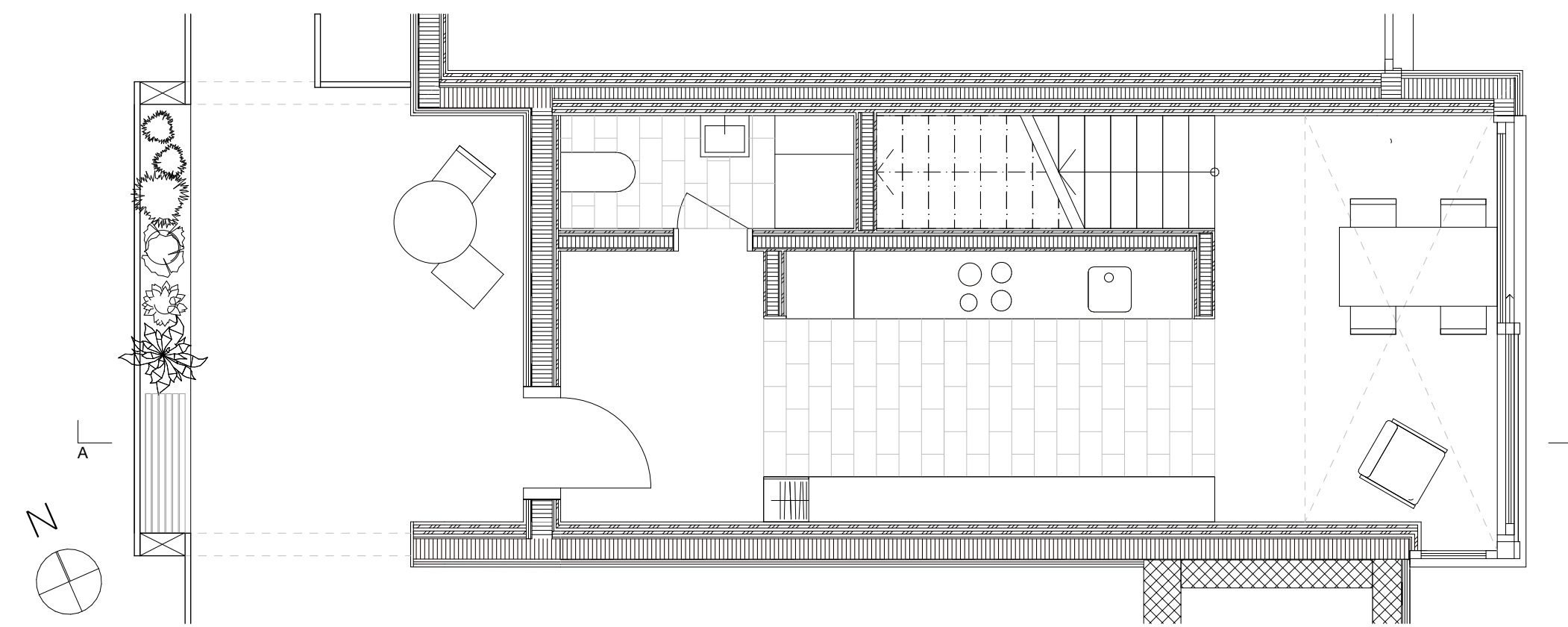
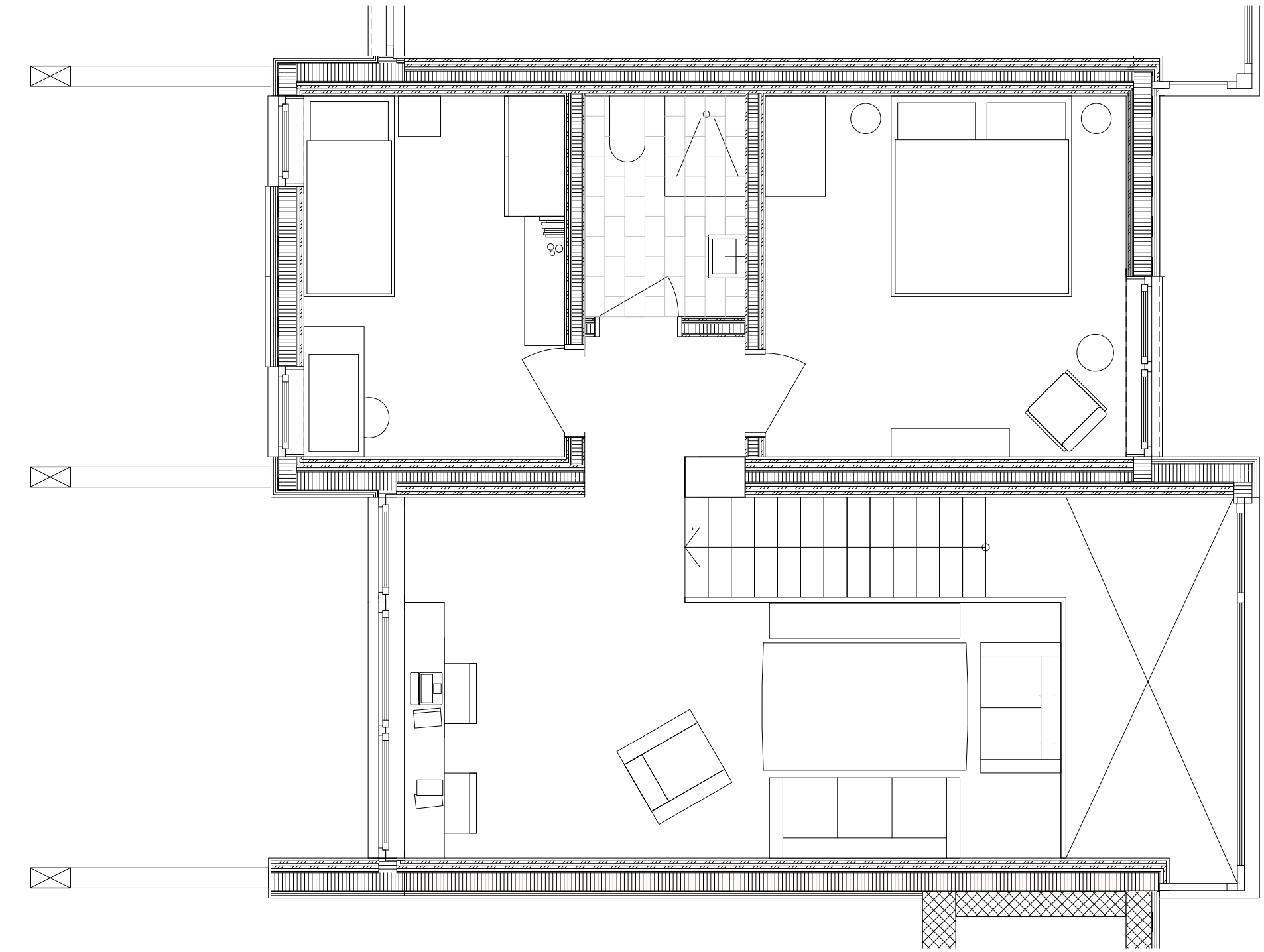
Wohnbau Uetikon am See



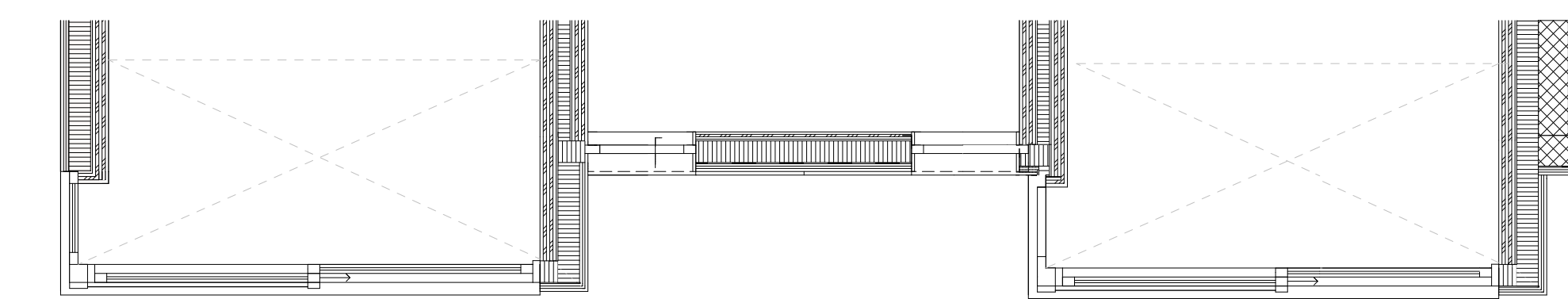
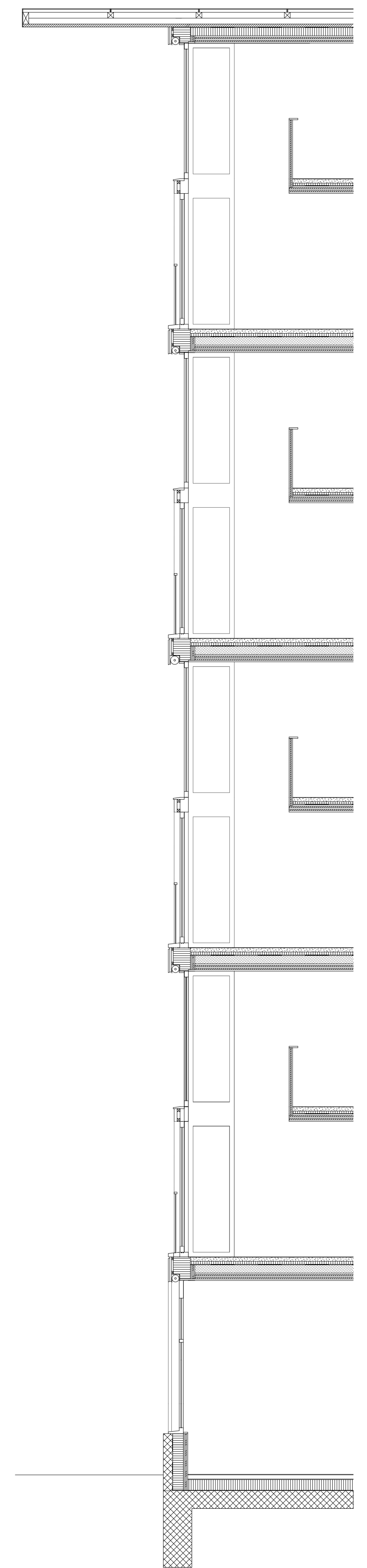
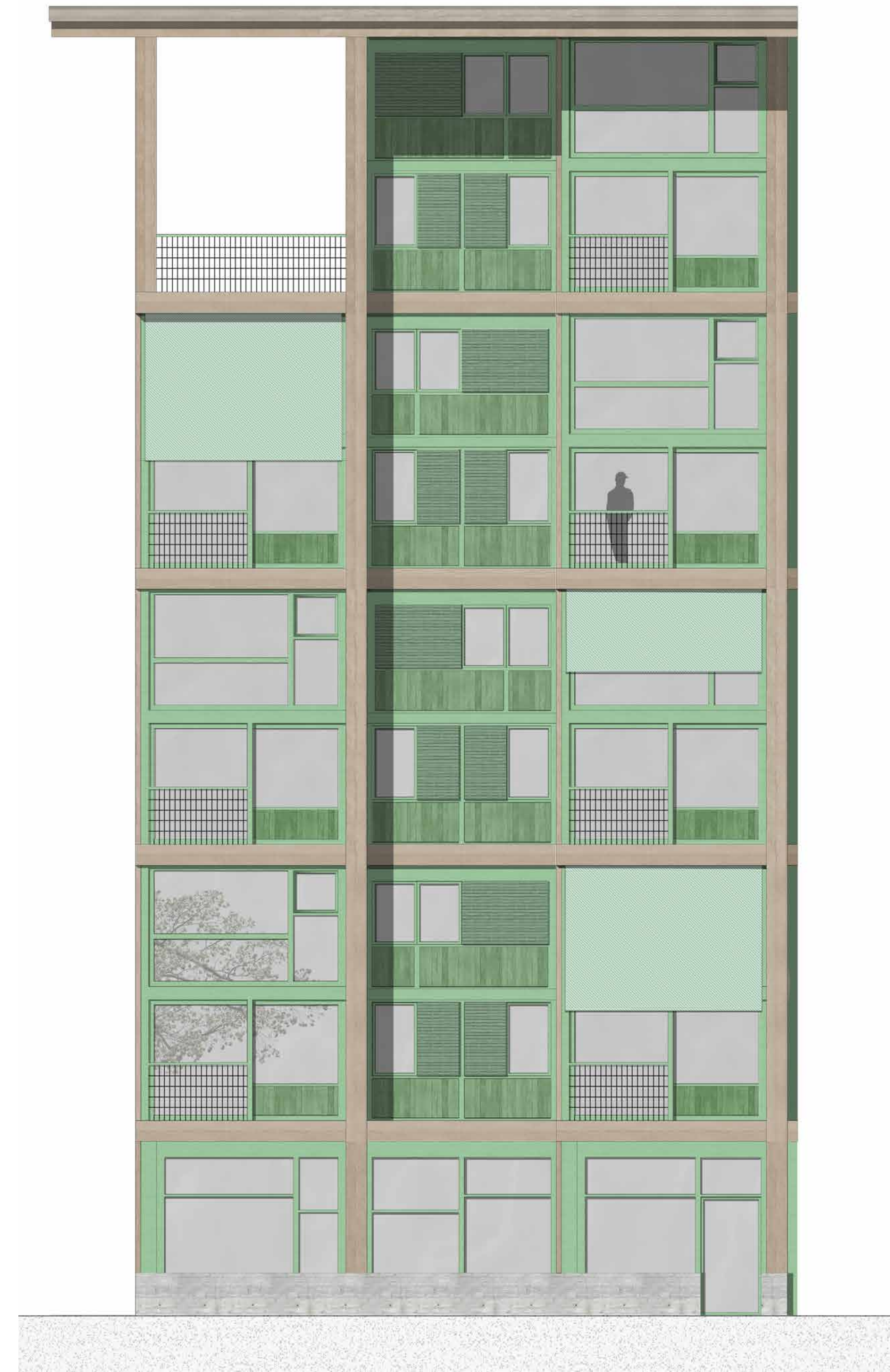
Innenraum Modellbild



Schnitt A-A Wohnung 1:50



1. & 2. Wohngeschoss 1:50



Fassadenschnitt mit Teilansicht 1:50

Bodenaufbau:
5 mm Linoleum
70 mm Heizestrich, PE-Folie
30 mm Trittschalldämmung
10 mm Sperschicht
140 mm Splitschüttung
135 mm Brettsper Holzplatte

Schottenwand:
135 mm Brettsper Holzplatte
15 mm Gipskartonplatte
100 mm Schalldämmung
15 mm Gipskartonplatte
135 mm Brettsper Holzplatte

Fassadenaufbau:
25 mm Schalung Lärche imprägniert
40 mm Unterkonstruktion Holz hinterlüftet
10 mm Feuchtigkeitsabdichtung
180 mm Wärmedämmung
15 mm Gipskartonplatte
60 mm Brettsper Holzplatte

Dachaufbau:
60 mm Photovoltaikmodule
monokristallin gerahmt, verdichtet
Feuchtigkeitsabdichtung
180 mm Wärmedämmung
5 mm Feuchtigkeitsabdichtung
15 mm Gipskartonplatte
135 mm Brettsper Holzplatte