

WHAT IS IT WORTH?

REFERENCES



Martha Rosler (1943-)
House Beautiful: Bringing the War Home. 1967-72



Gordon Matta-Clark (1943-1978)
Walls Paper 1972



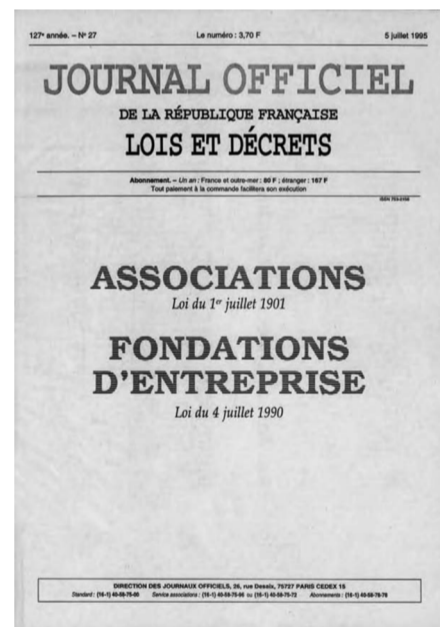
Cindy Sherman (1954-)
Untitled Film Still #21, 1978



Hanne Darboven (1941-2009)
Cultural History, 1880-1983



Andrea Fraser (1965-)
Museum Highlights: A Gallery Talk 1989



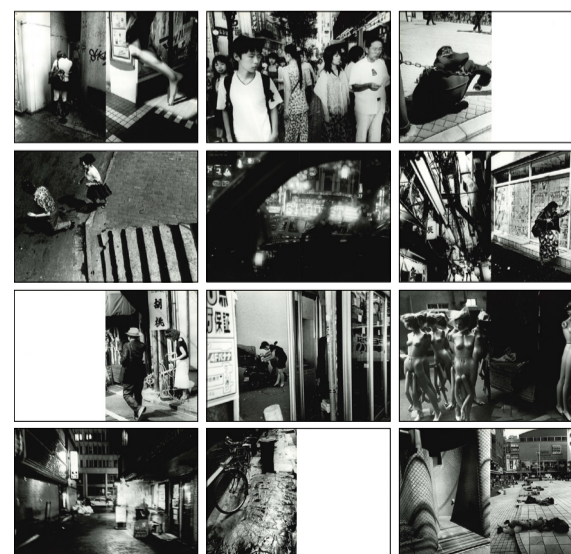
Pierre Huyghe (1962-)
L'association des Temps Libérés (A.T.L.) / Freed time Association 1995



Sophie Calle (1953-)
The Detachment, 1996



Taryn Simon (1975-)
Paperwork and the will of capital, 2015



Daido Moriyama (1938-)
Shinjuku 19XX-20XX, 2002