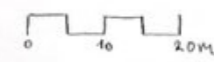
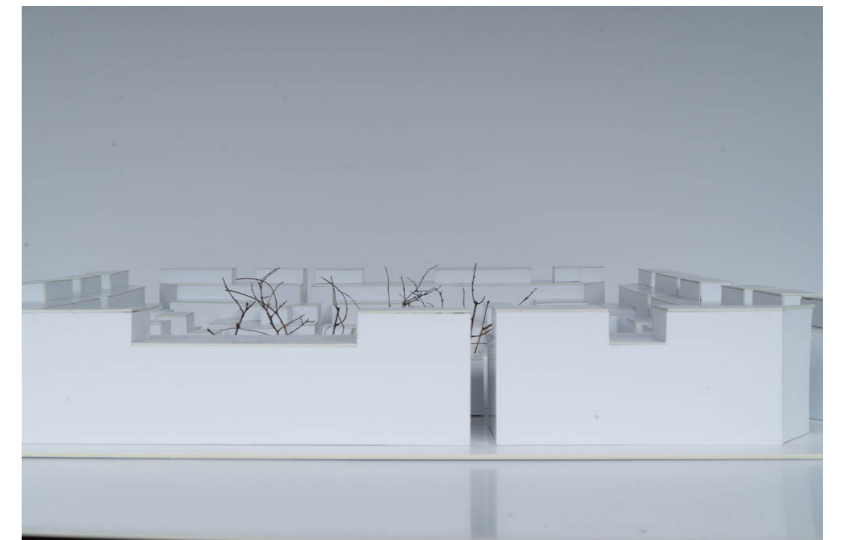
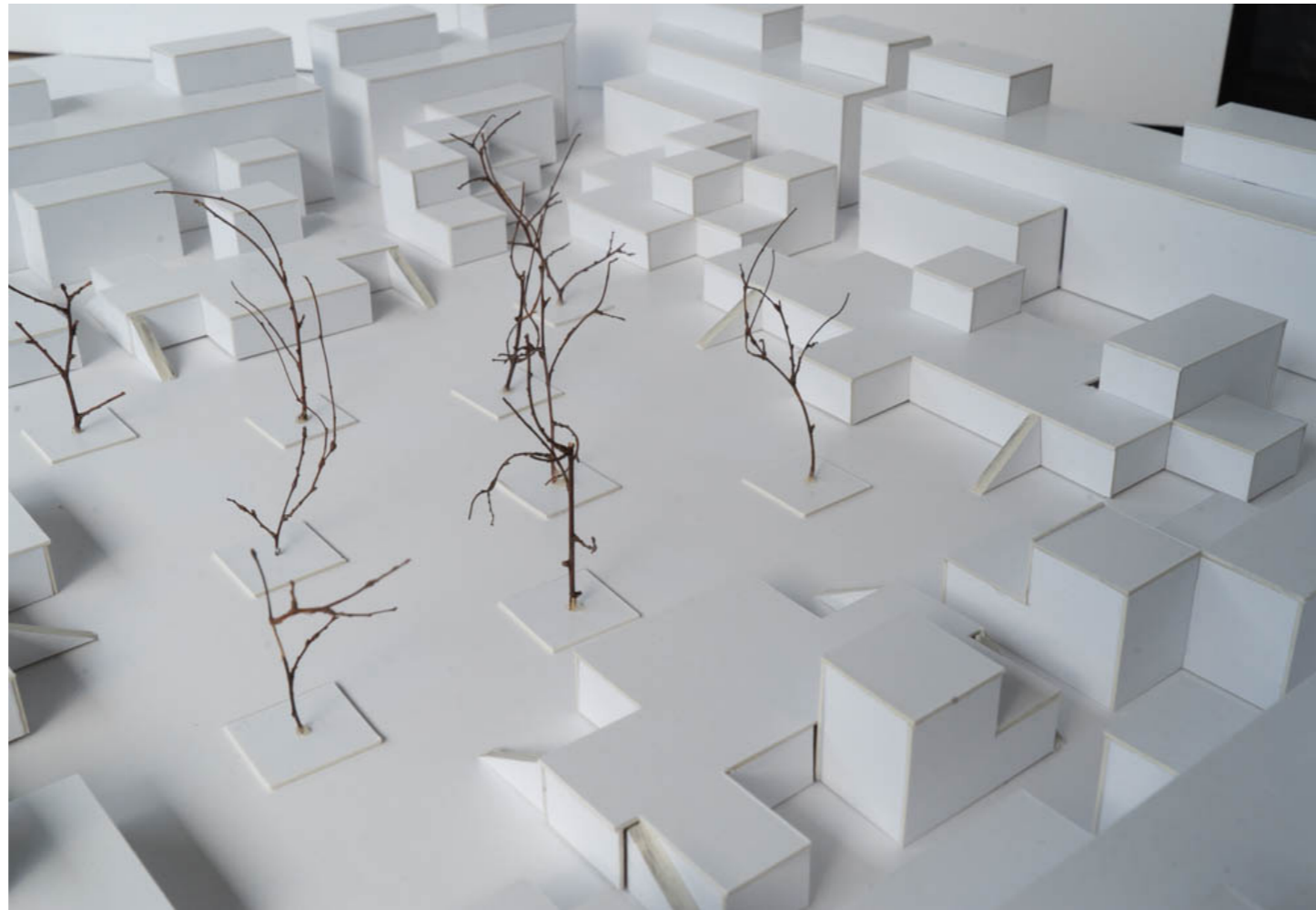
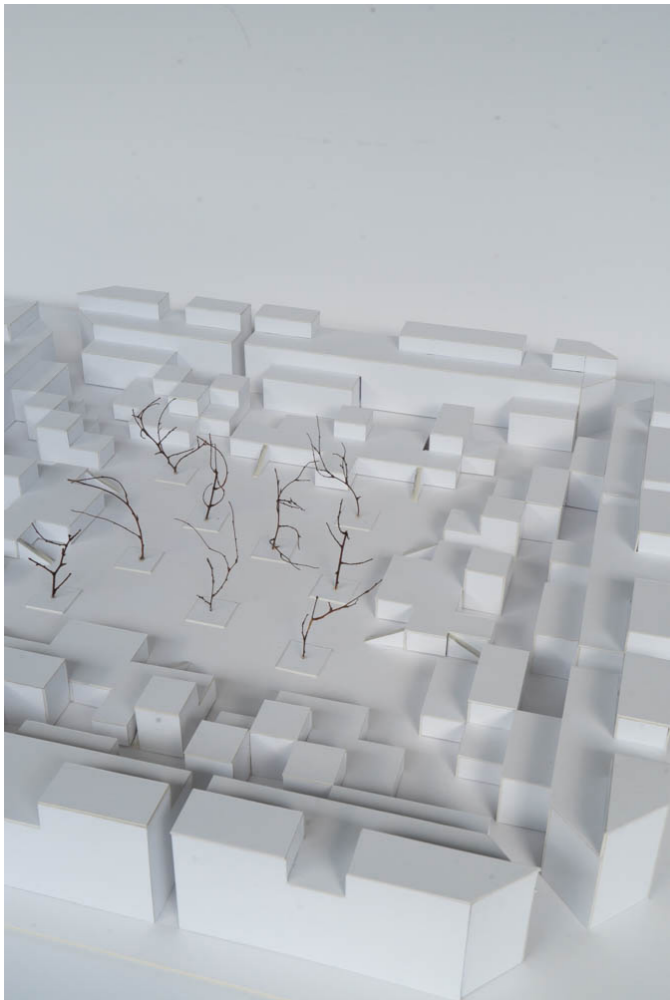
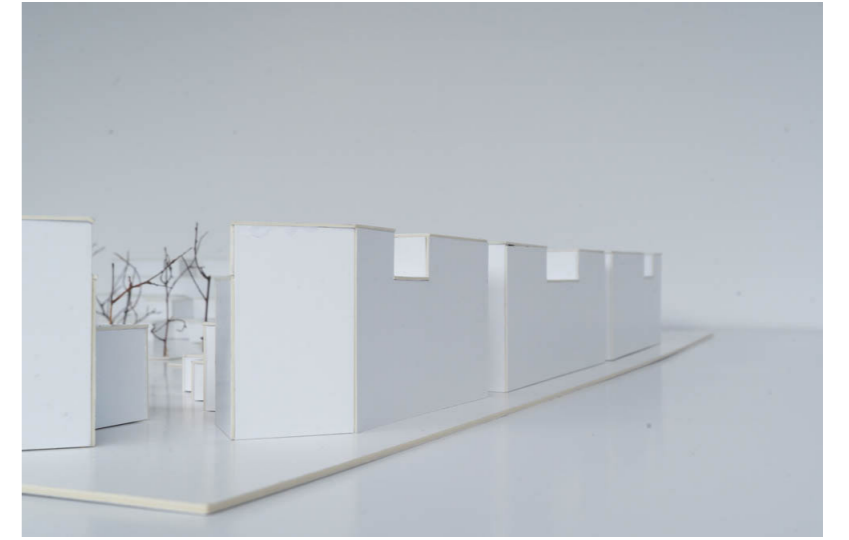
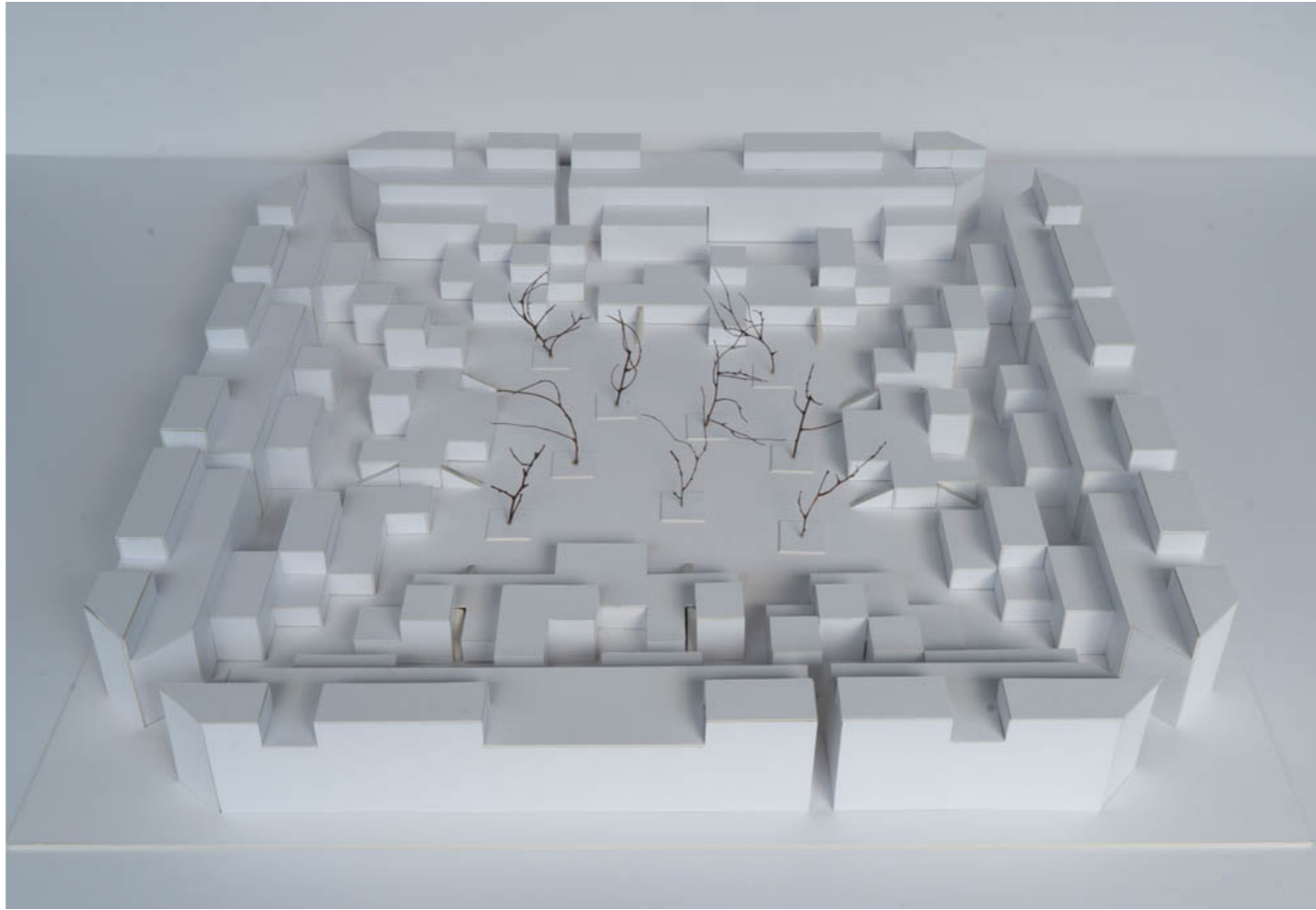


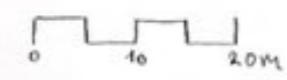
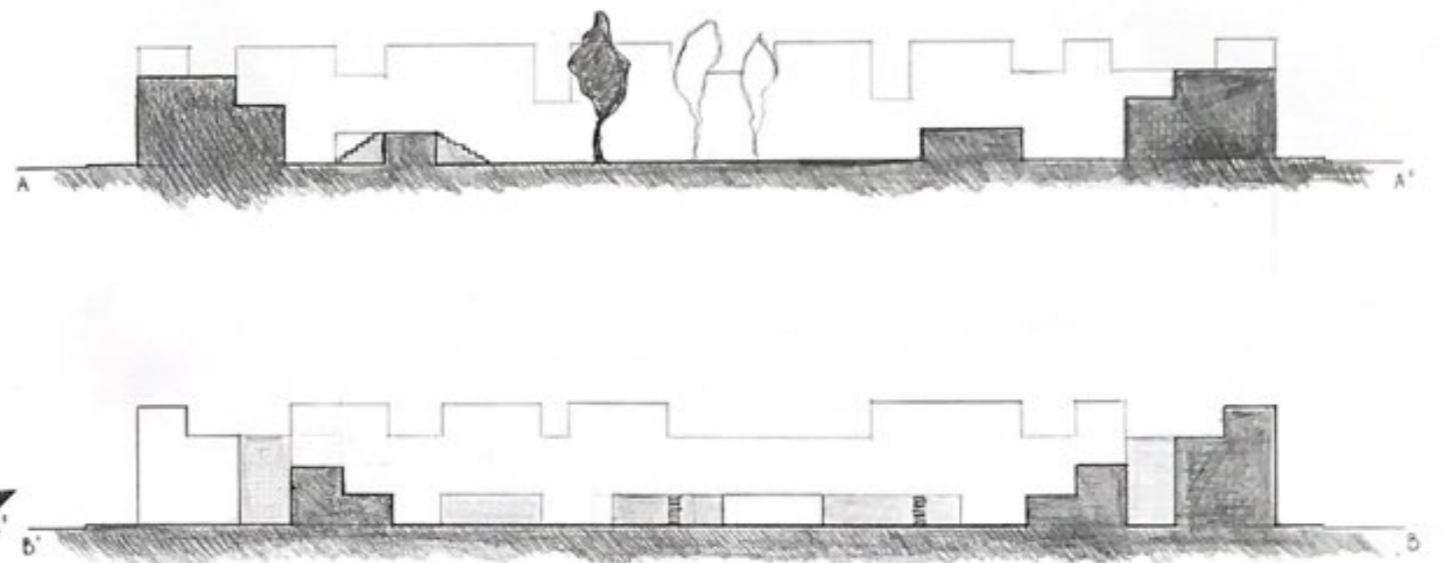
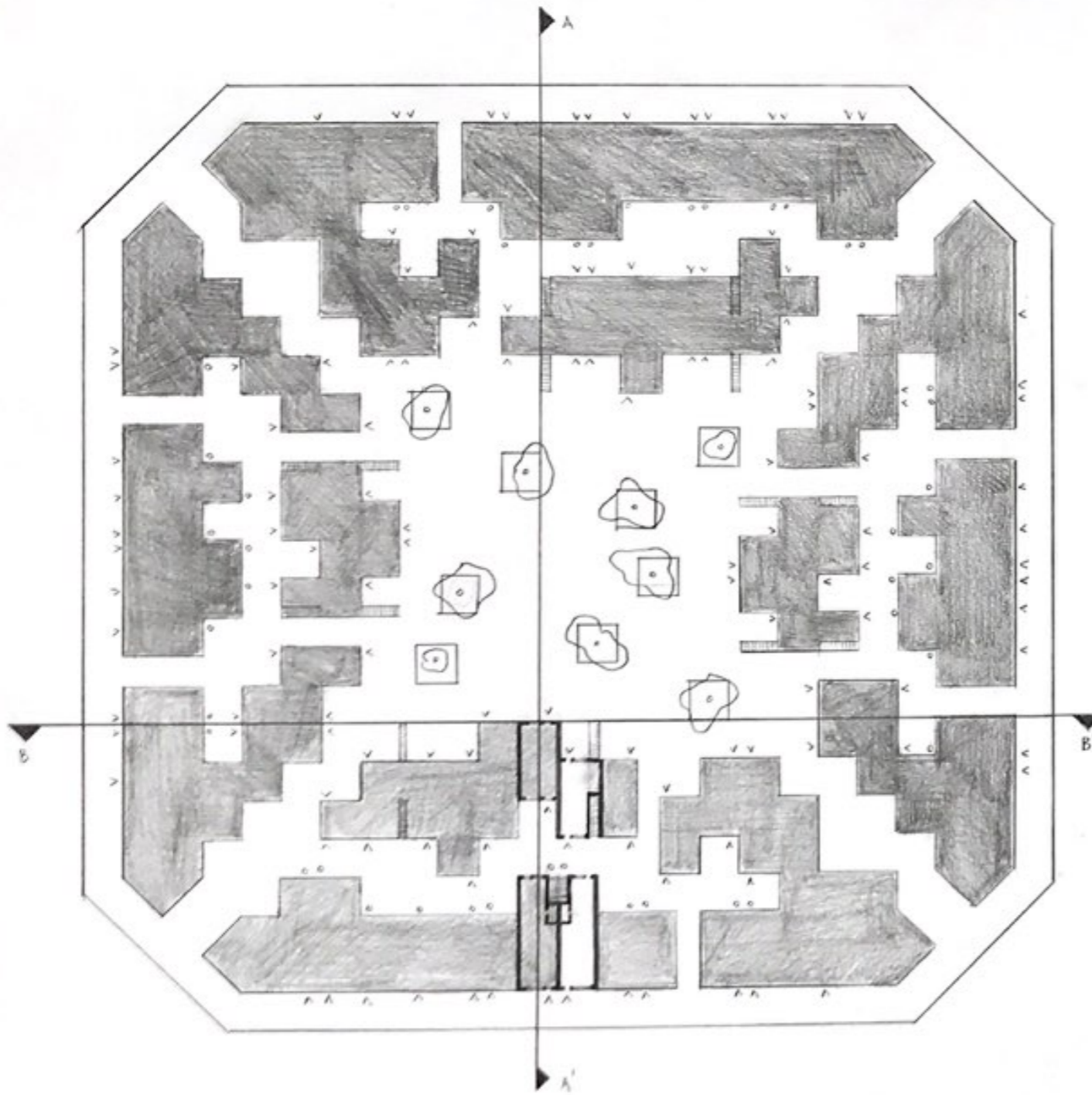


Quartier im Poblenou, Barcelona
Schlussabgabe FS 20
Eva Meier, Koje Zürich

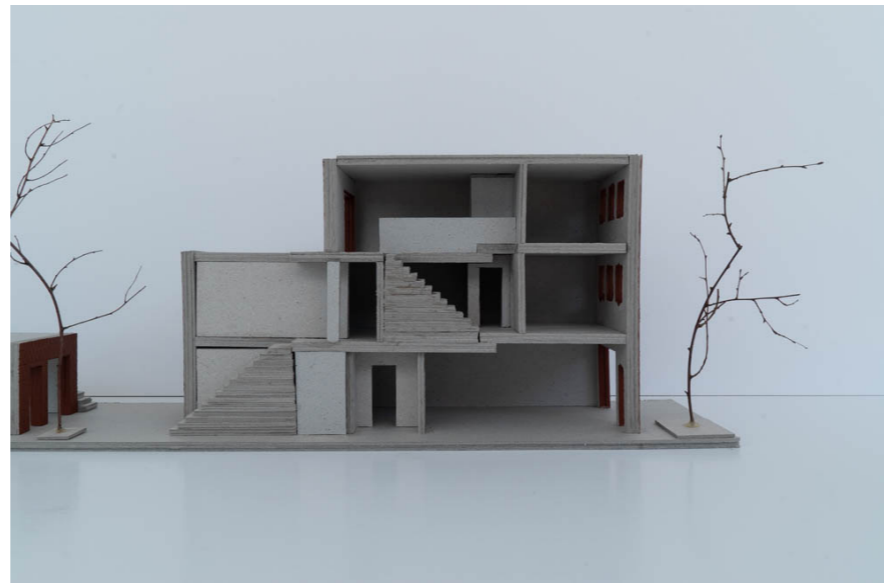


SITUATIONPLAN 1:500
CARRER DEL MARROC 177
POBLENOU, BARCELONA

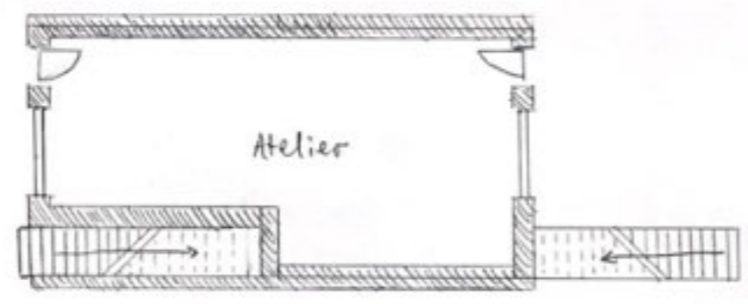
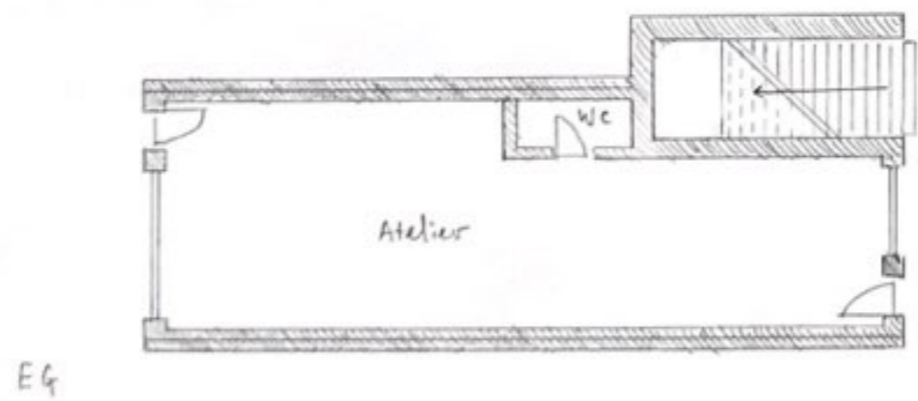
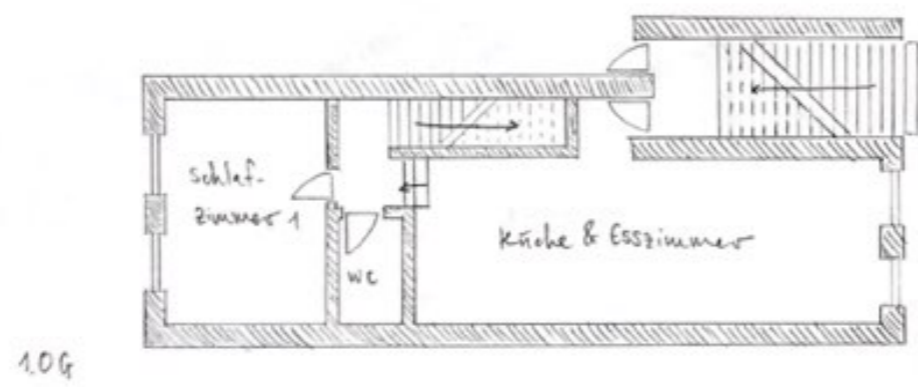
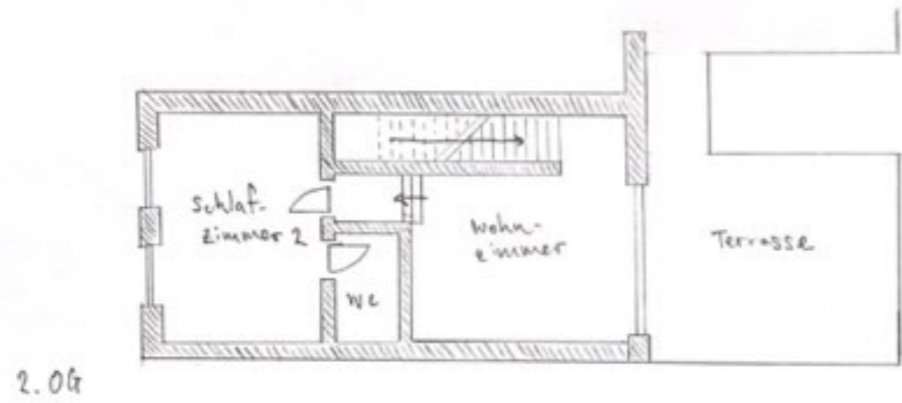




SITUATIONSPLAN 1:500
 CARRER DEL MARROC 177
 POBLENOU, BARCELONA



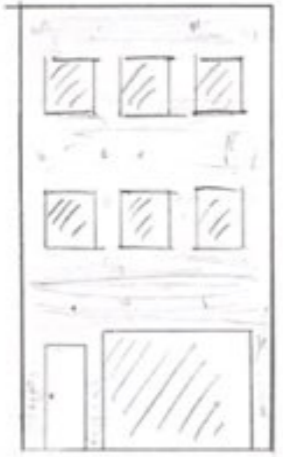
ATELIERHAUS - GRUNDRISS



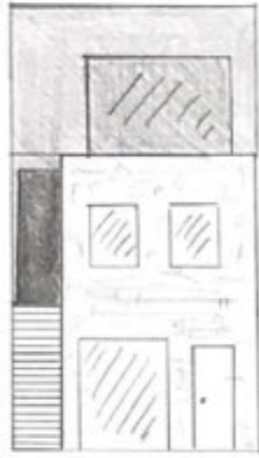
M 1:100

0 2 4m

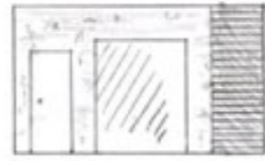
ATELIERHAUS - FASSADEN & SCHNITT



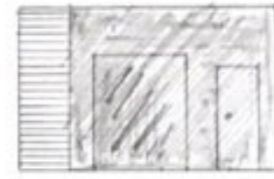
A



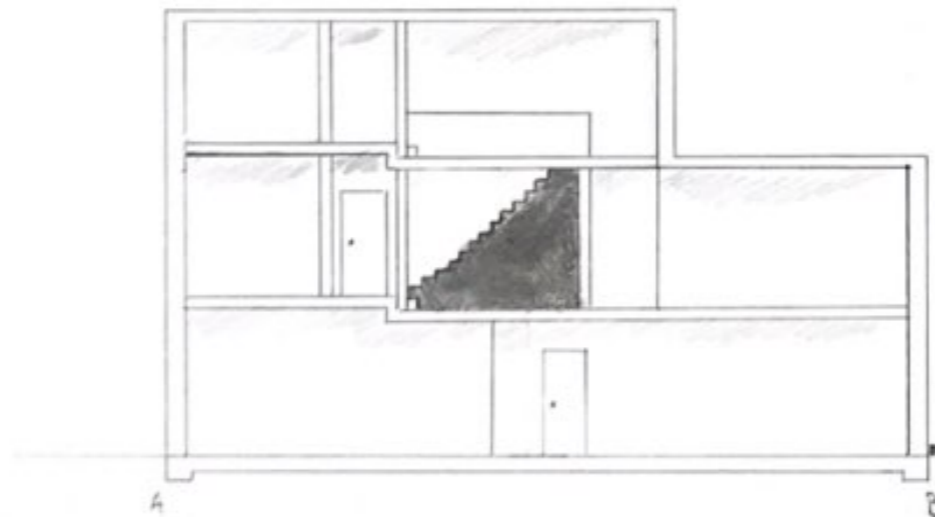
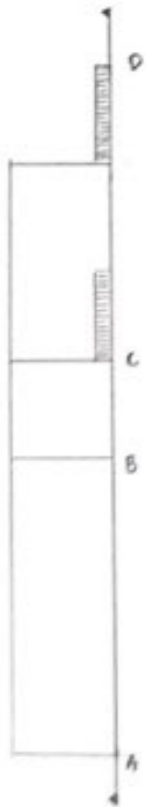
B



C

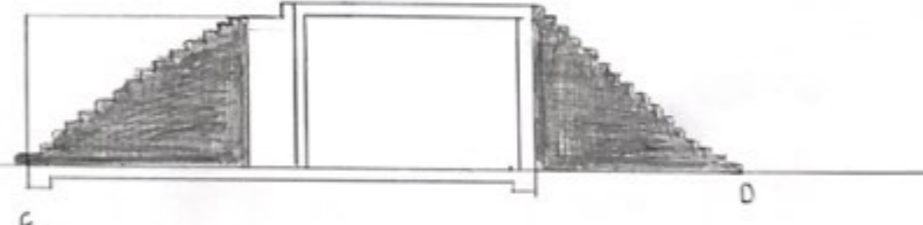


D



A

B



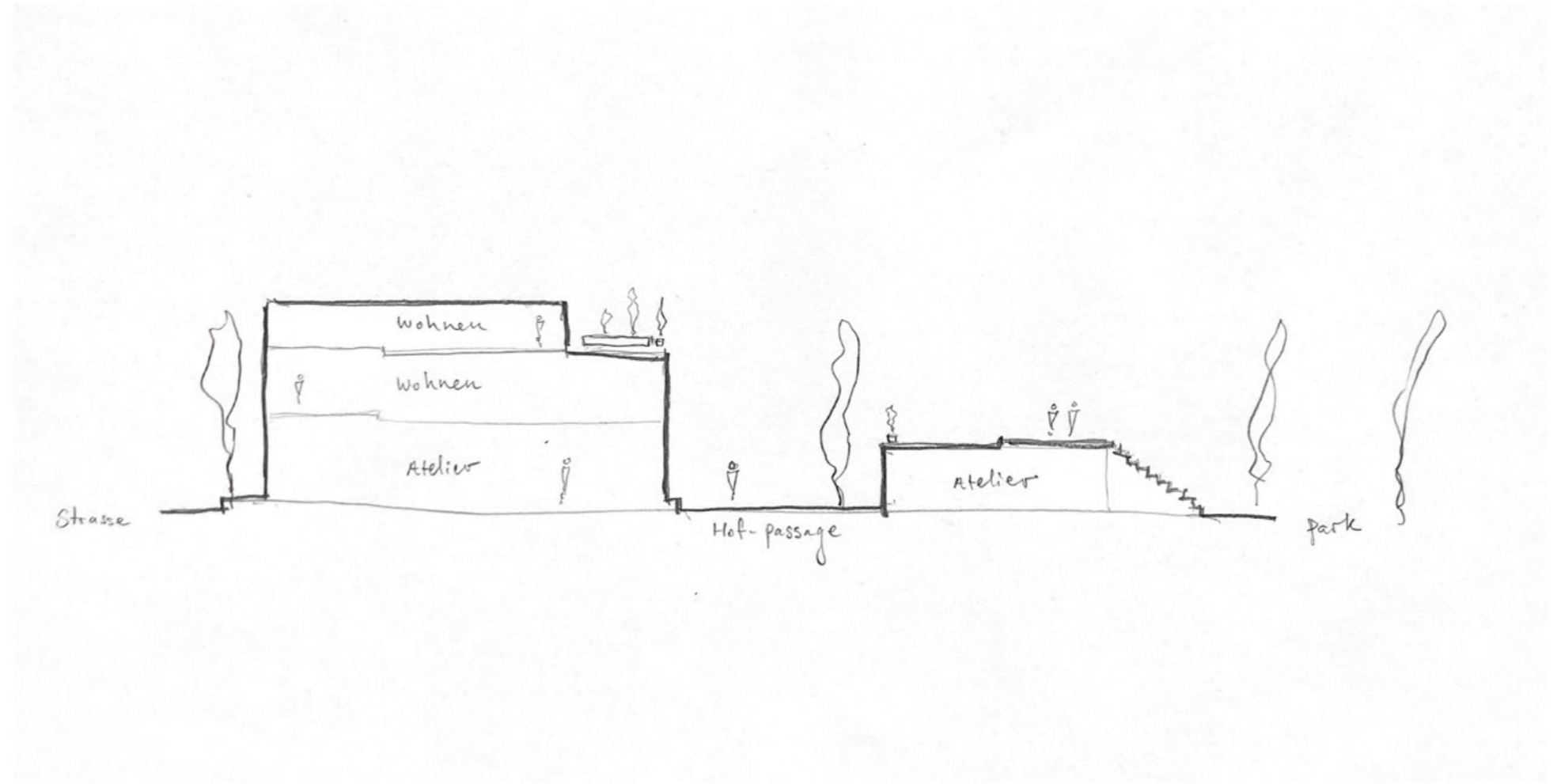
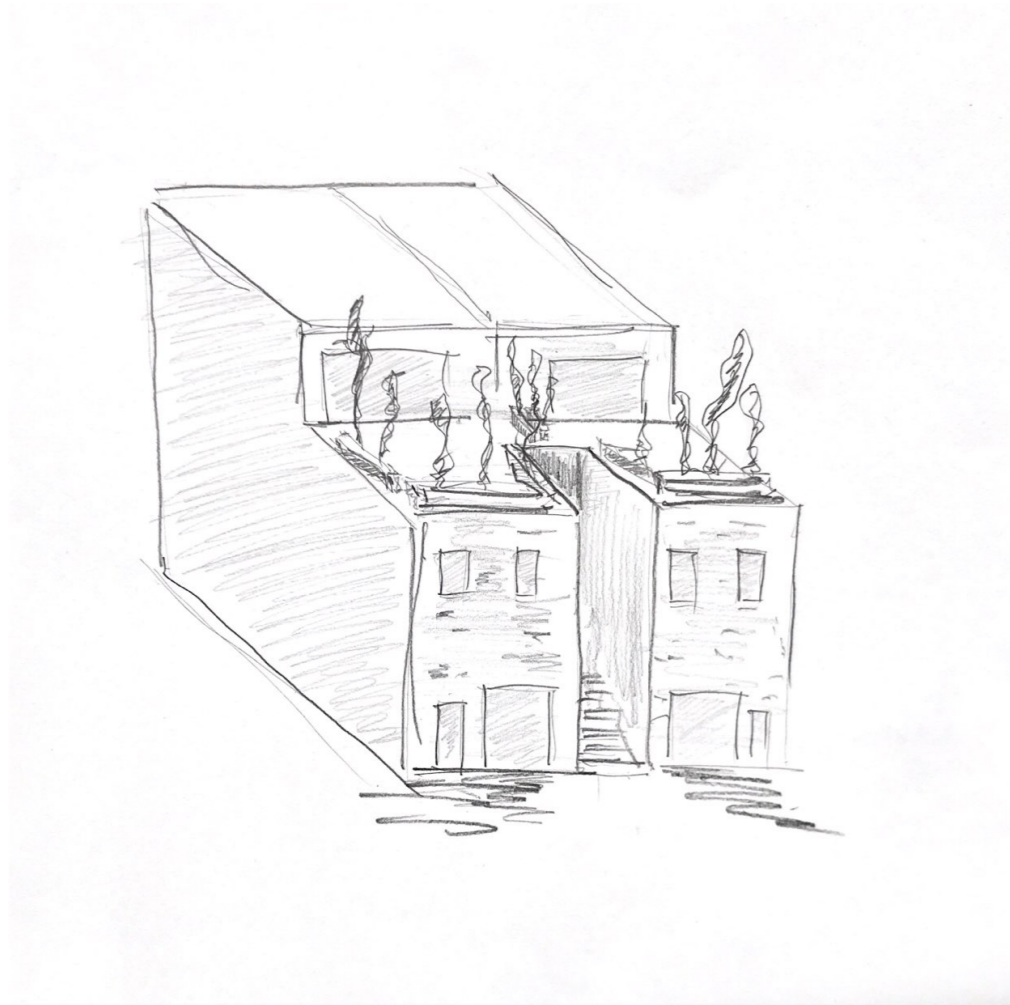
C

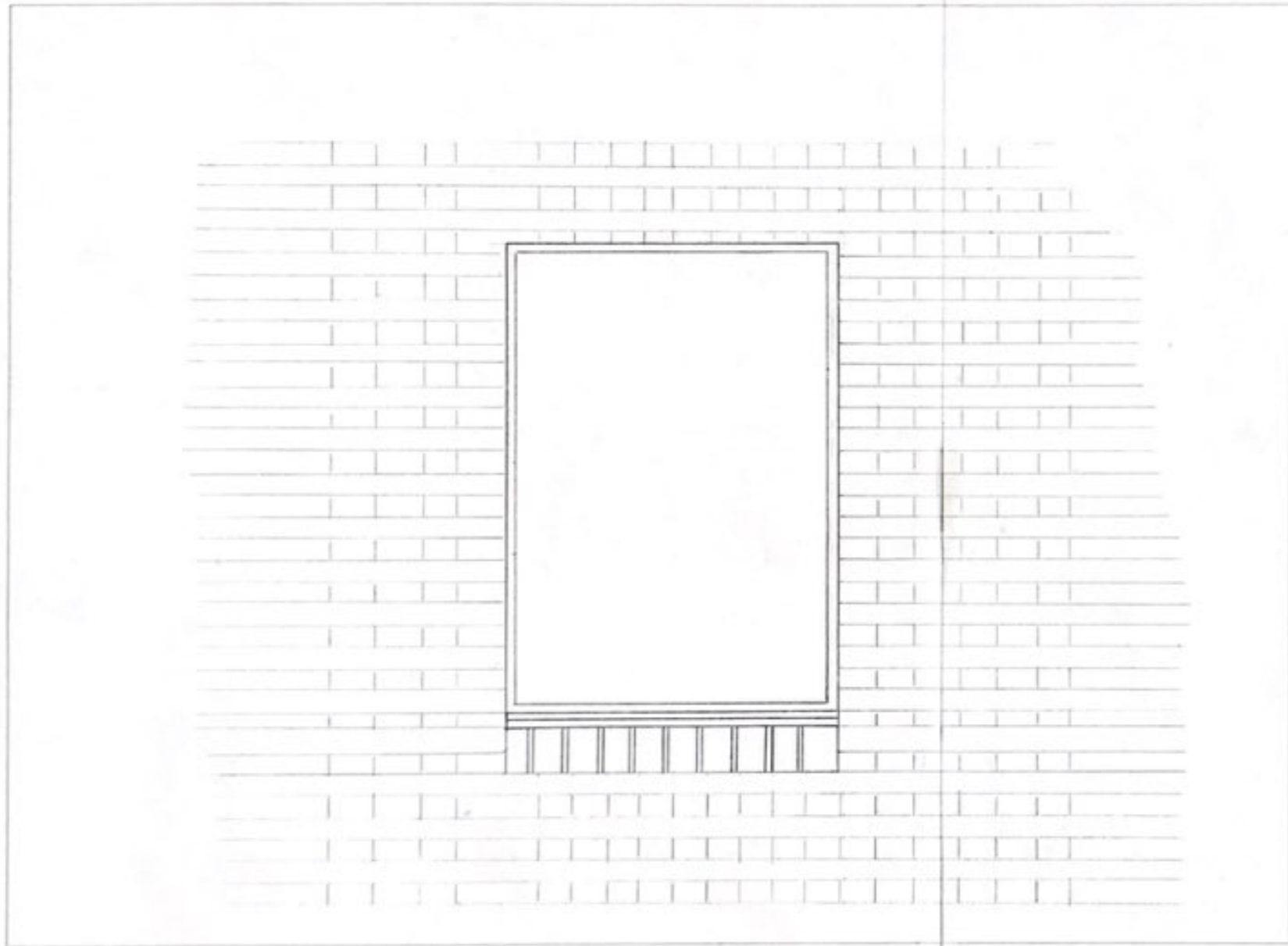
D

M 1:400

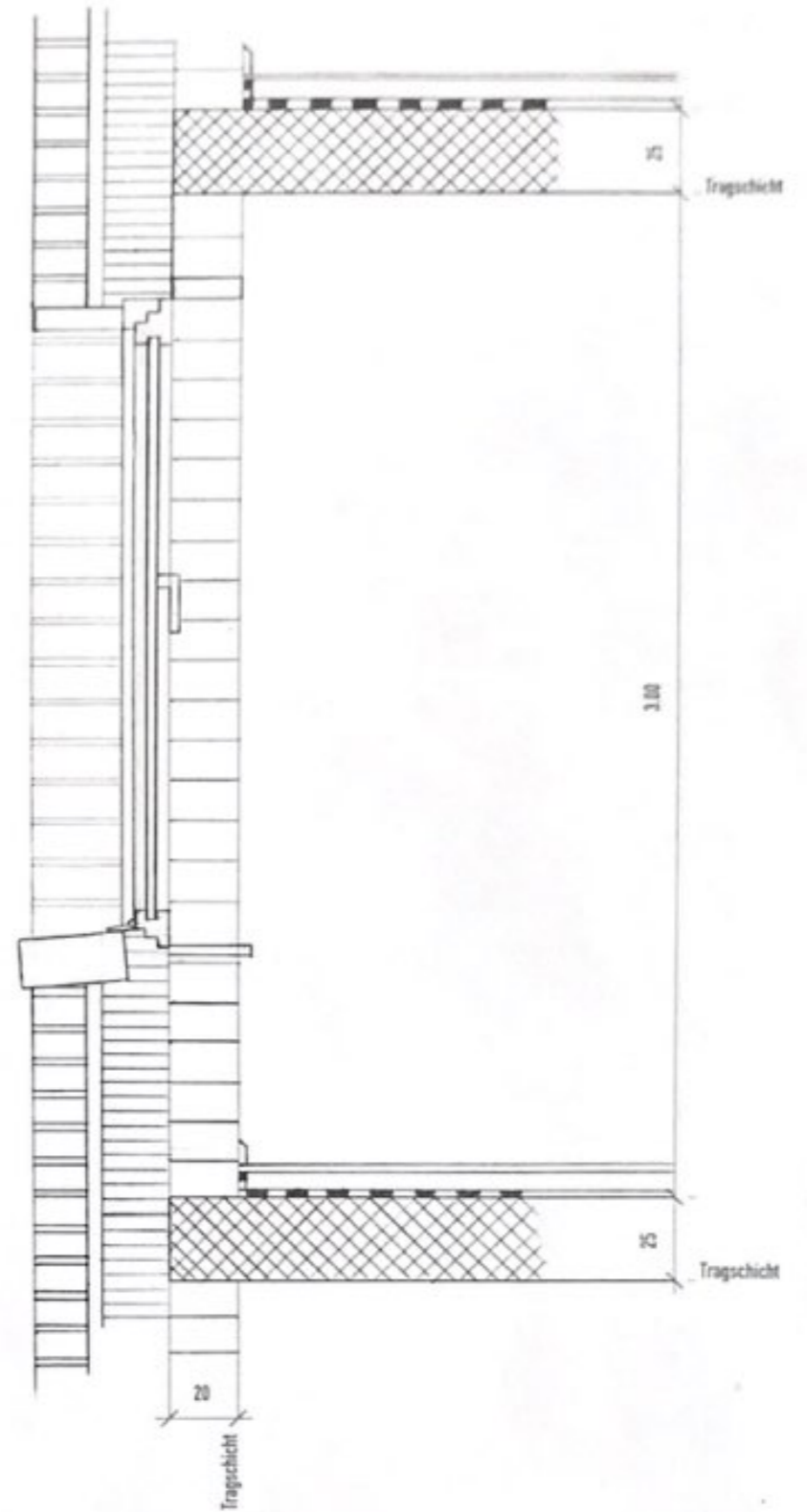


Atelierhaus Skizzen

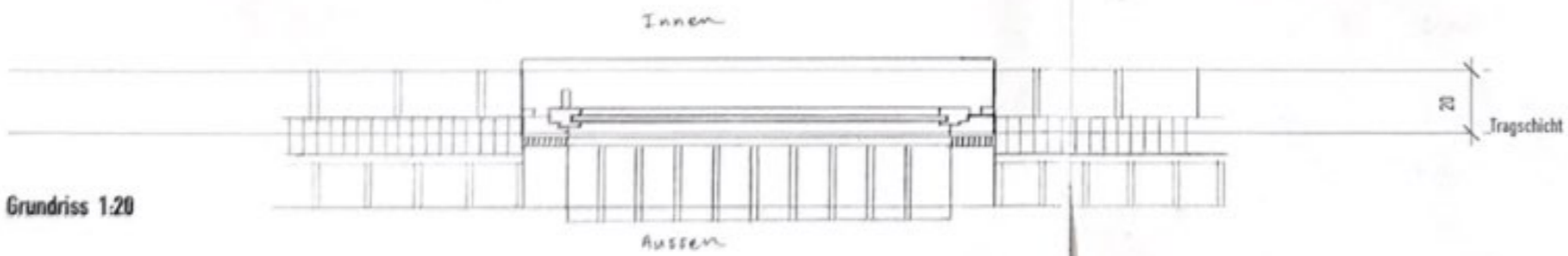




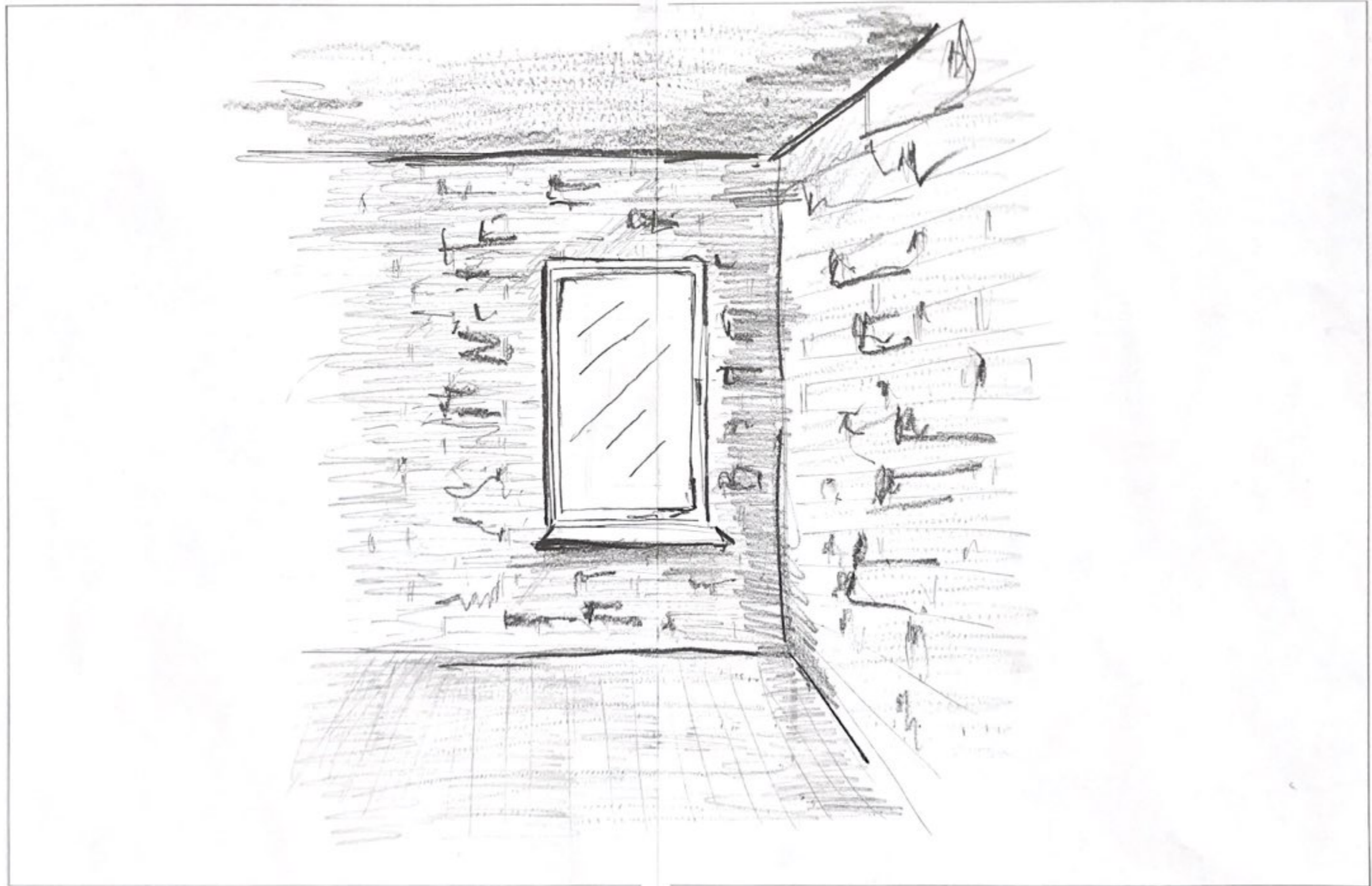
Teilansicht 1:20



Schnitt 1:20



Grundriss 1:20



Perspektive: Innenraum mit Fenster (skizziert)