

# LAB

***laboratory & archive basel***

RE-USE CIBA  
FS 2020

Lena Haechler  
14-923-718



*Imagine the masses demolished with the CIBA area. One asks where does the substance go? Demolition also means releasing resources. It is always a conversion of energies, as we are in constant motion.*

*The laboratory building with new skin, more arms and an expanded blood stream becomes the central body for its neighbourhood by supplying them with physical and virtual resources, offering them a field of experimentation. Therewith life cycles are closing. It collects and distributes. It mediates and stores. It tests and expands. By coordinating, it allows us to deal with the existing and move forward, not to start all over again, but to continue.*

*Located between the Rhine and the central Klybeck plaza, ramps and stairs connect the two levels as well as the building with the surrounding.*

*The repetition of the seven identical storeys and the oversized supporting structure allow the building to become an urban shelf, which is accessed by a new internal atrium. Where a lightweight structure completes the existing and rises from bottom to the top, bringing light in to the earlier dark. In its dimensions it celebrates the artefacts and their stored knowledge and opens them to the public. It acts as point of reference and network with its many stairs and bridges.*

*One day a labyrinth of artefacts, the next an empty arena of digital projections, it undergoes constant transformation. There is the historic and the new, there is the permanent and the fleeting. The space grows and shrinks and extends in different forms outwards to the*

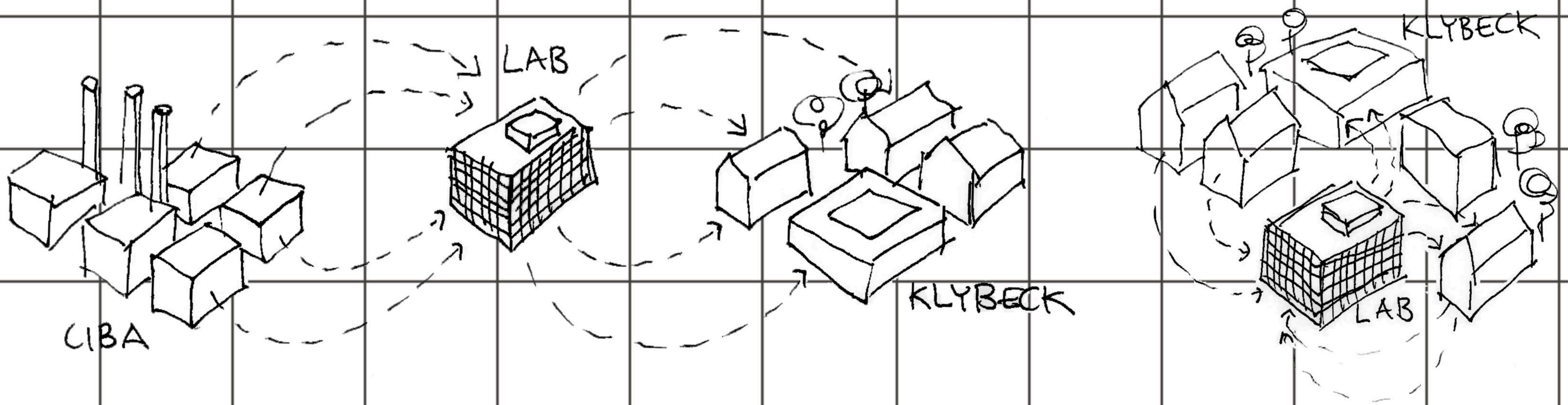
*façade and sometimes through it. With the possibility to expand and deconstruct the structure becomes long-lasting.*

*Goods are supplied on the underground level, where they are sorted and brought up to the central structure. From where they are distributed in the shelf. In the logic of the former laboratory building, the serving space remains in the centre, while the served rooms surround it. With the abundance inside, empty surface is provided on the outside to curate, experiment, use and learn.*

*Different programs linked to the archiving of physical or virtual resources find place in the building. There is a public workshop and remaining old laboratories on the first, a library and exhibition on the sixth floor, to name but four of them. Each department has its place in the structure, where it stores objects of art, books and other tools in its individual configuration. Where the inner stairs arrive, the framework reaches out and connects the innermost to the surrounding rooms.*

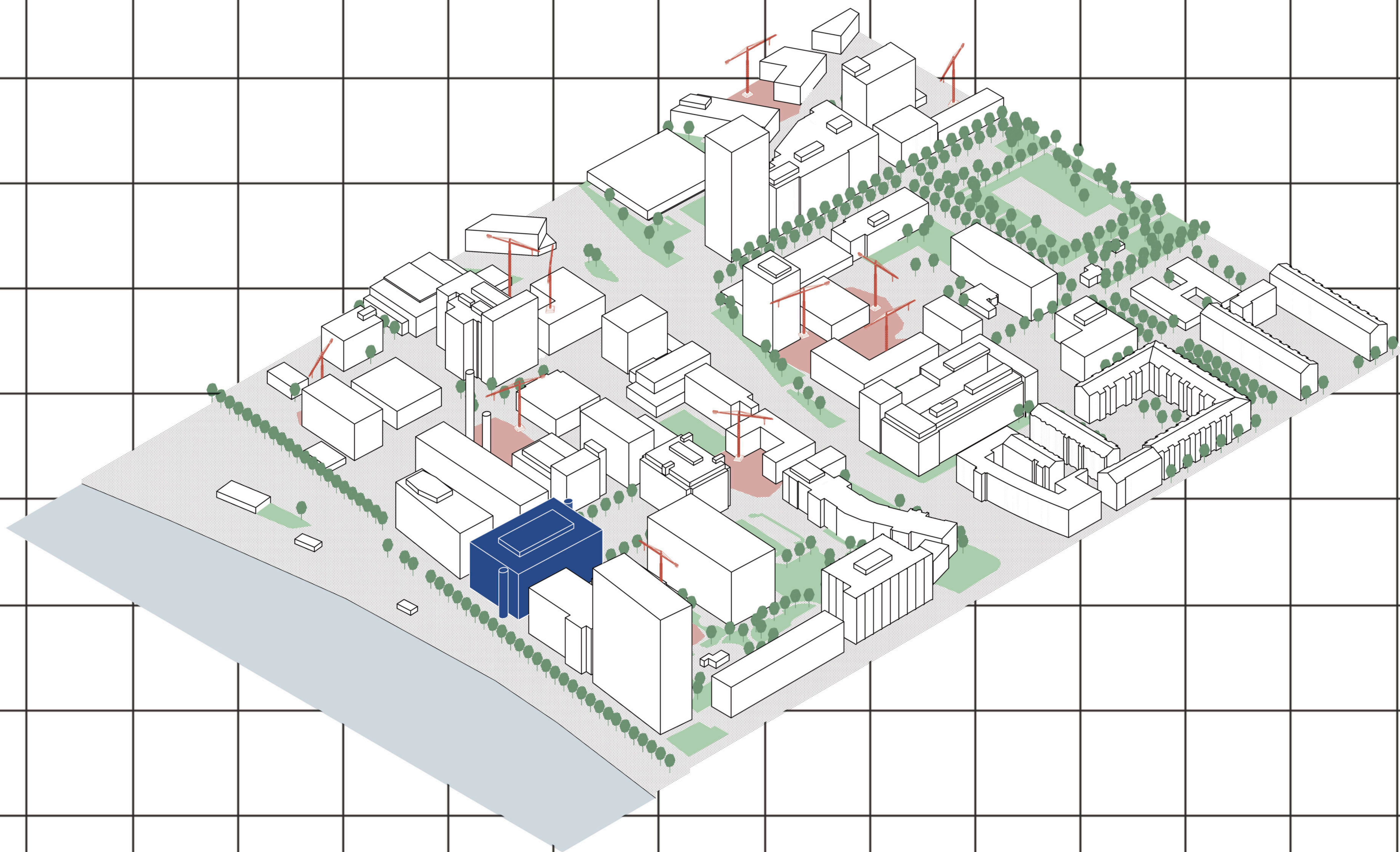
*In the logic of the layers, the façade is formulated by an intermediate climate. The outermost envelope covers the raw concrete structure like a raincoat. The building breathes through top-hung windows, and where the desire for more space arises, a staircase ejects from the homogeneous textile skin. Also on the green rooftop the blue structure emerges and becomes visible from far.*





*collecting and distributing*



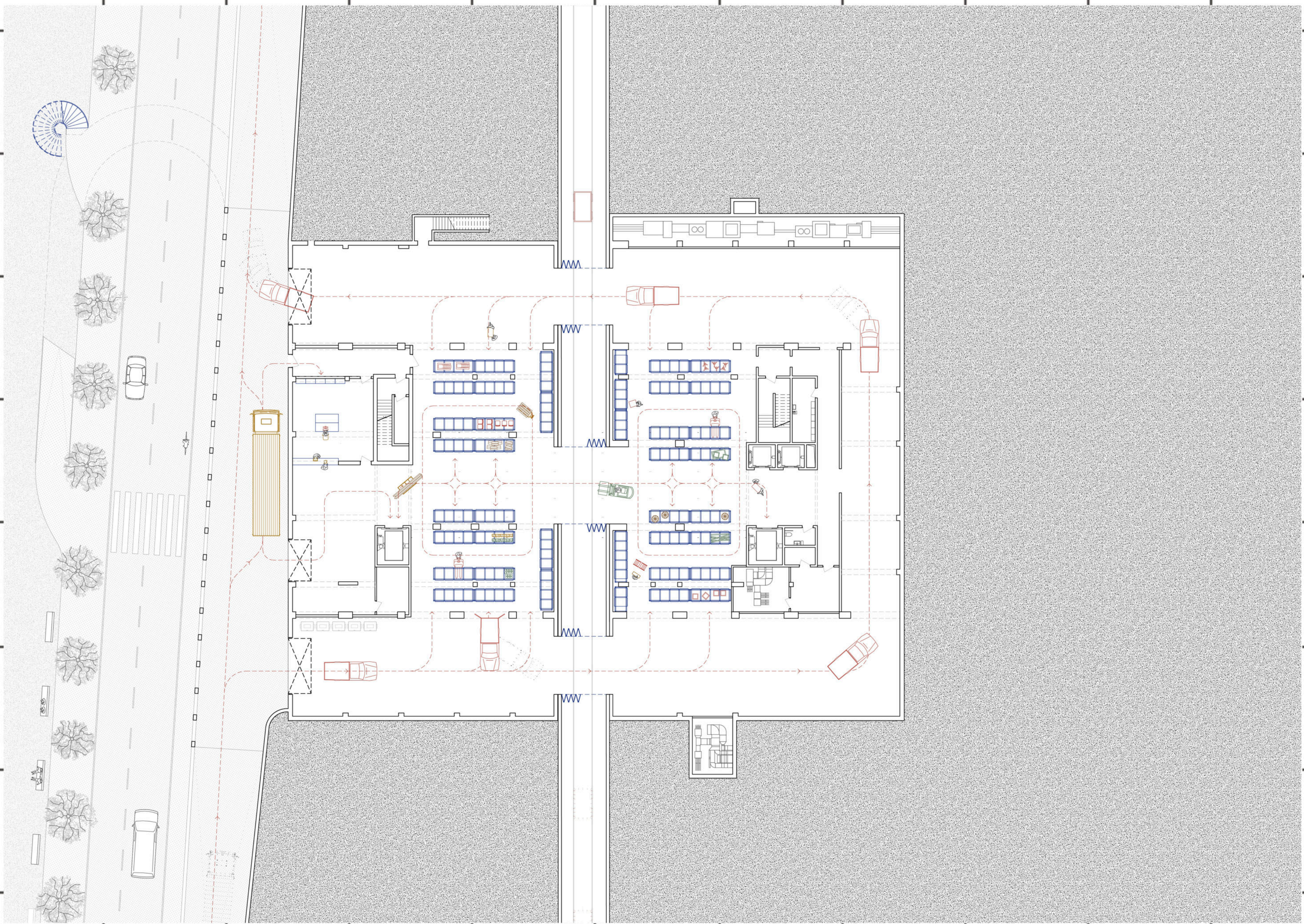


*transformation*

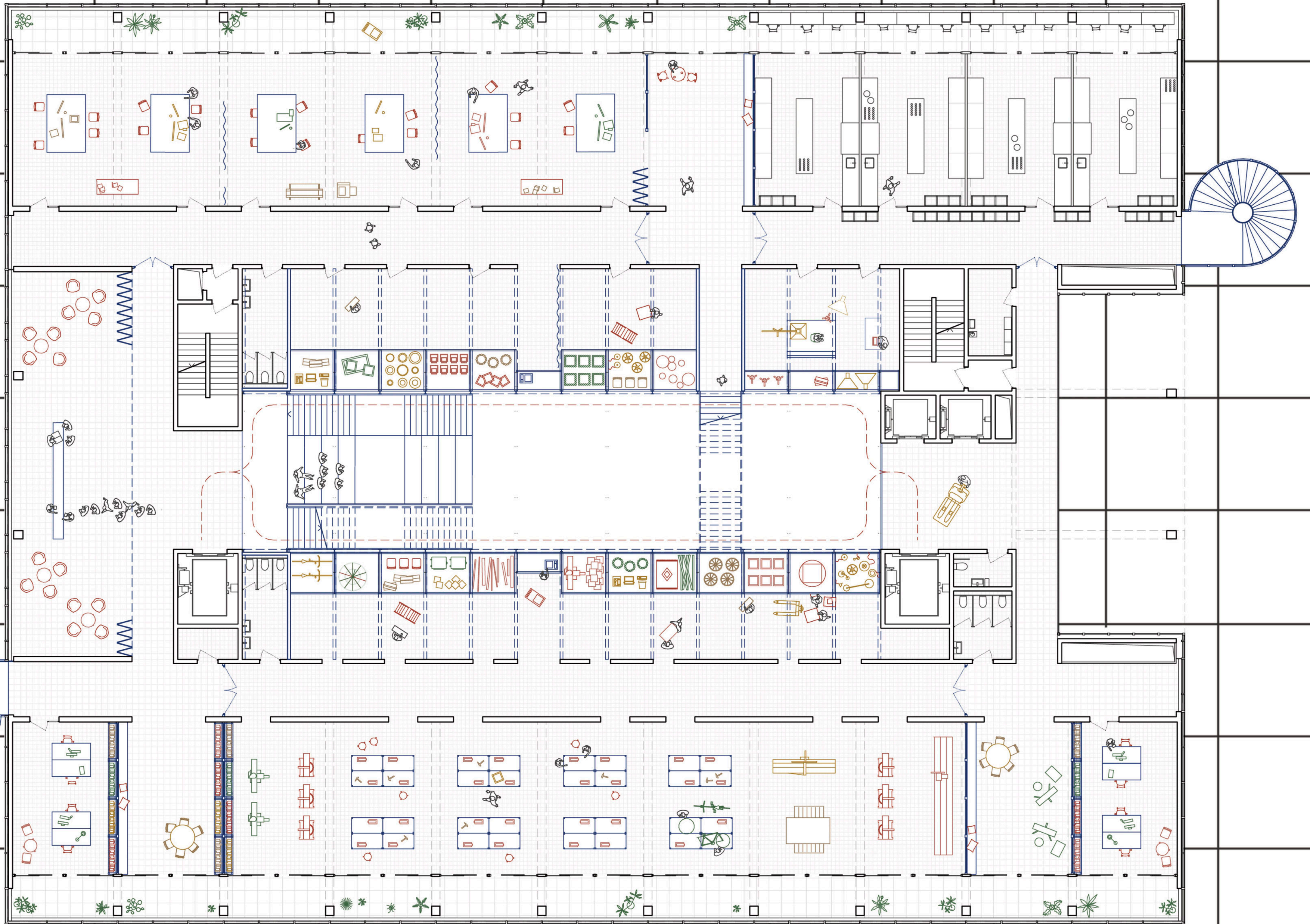






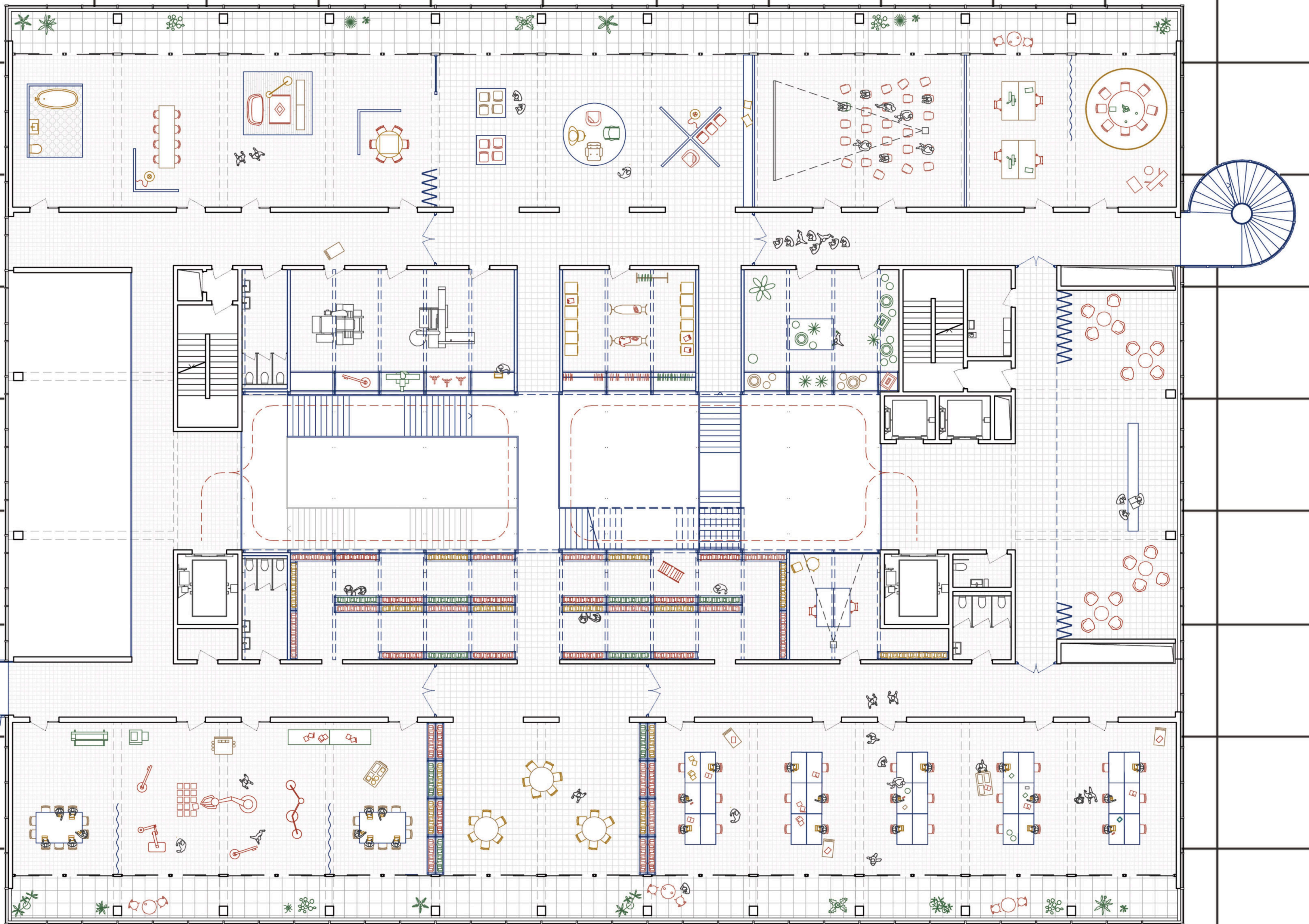




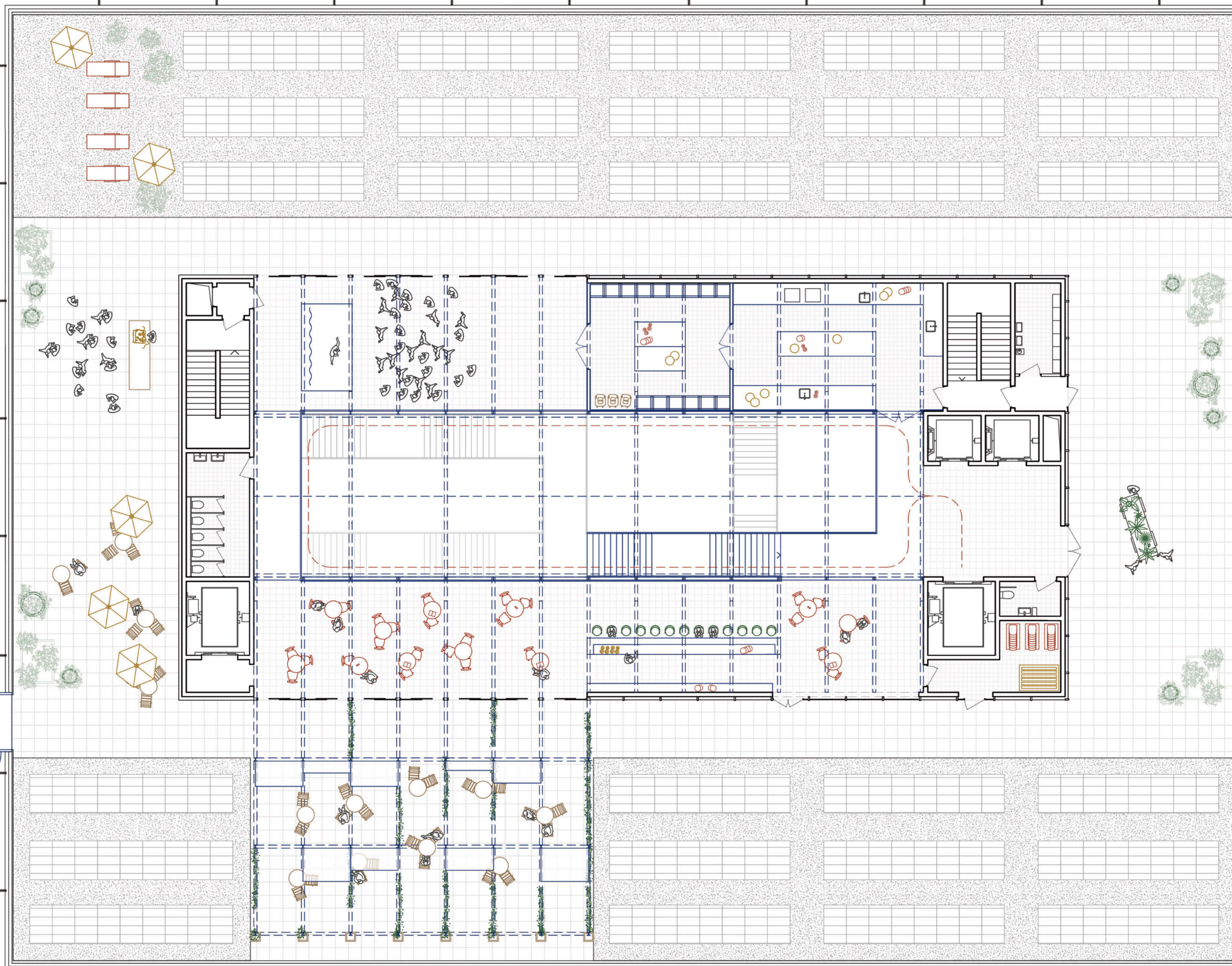


+1



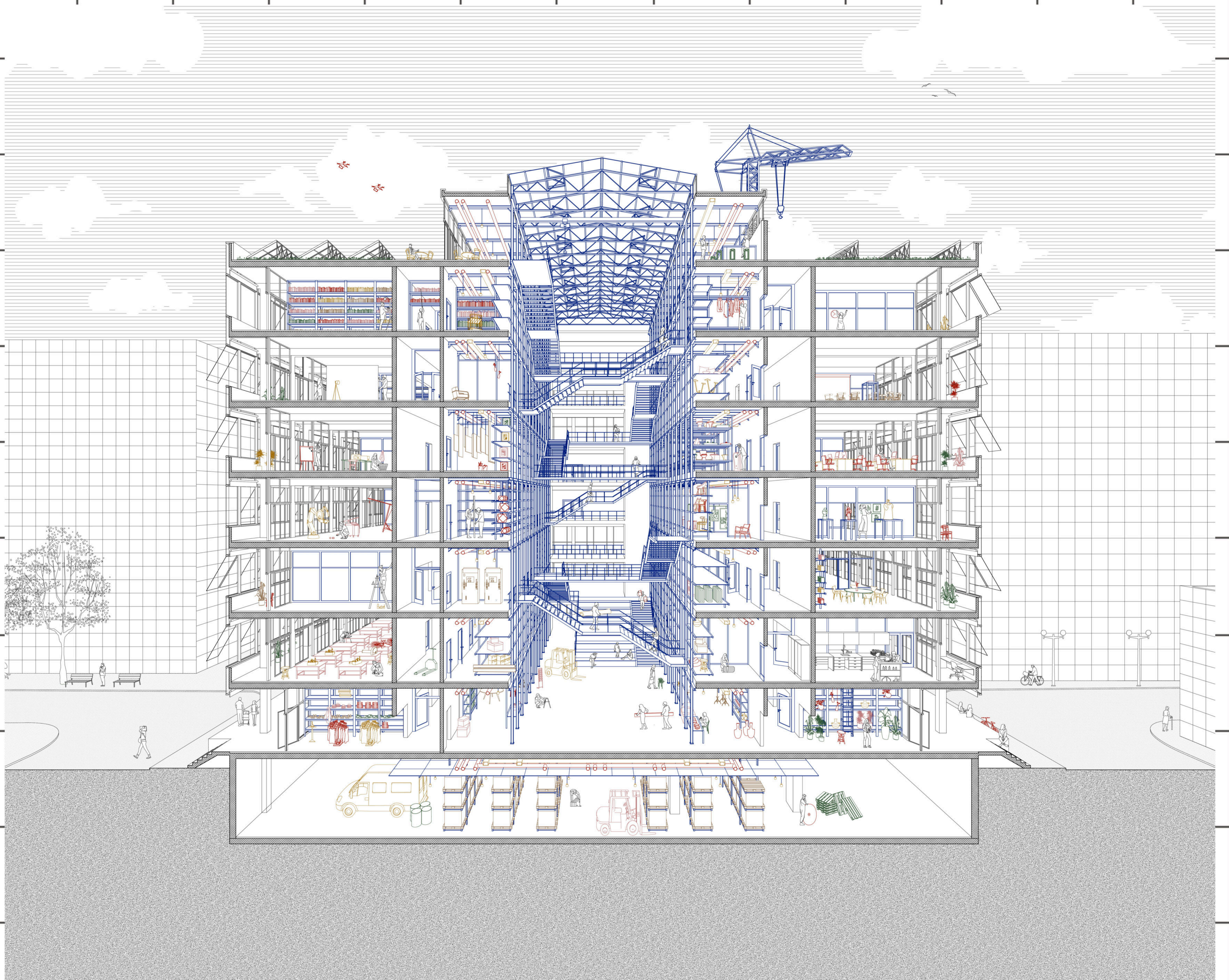






+7





*structure*



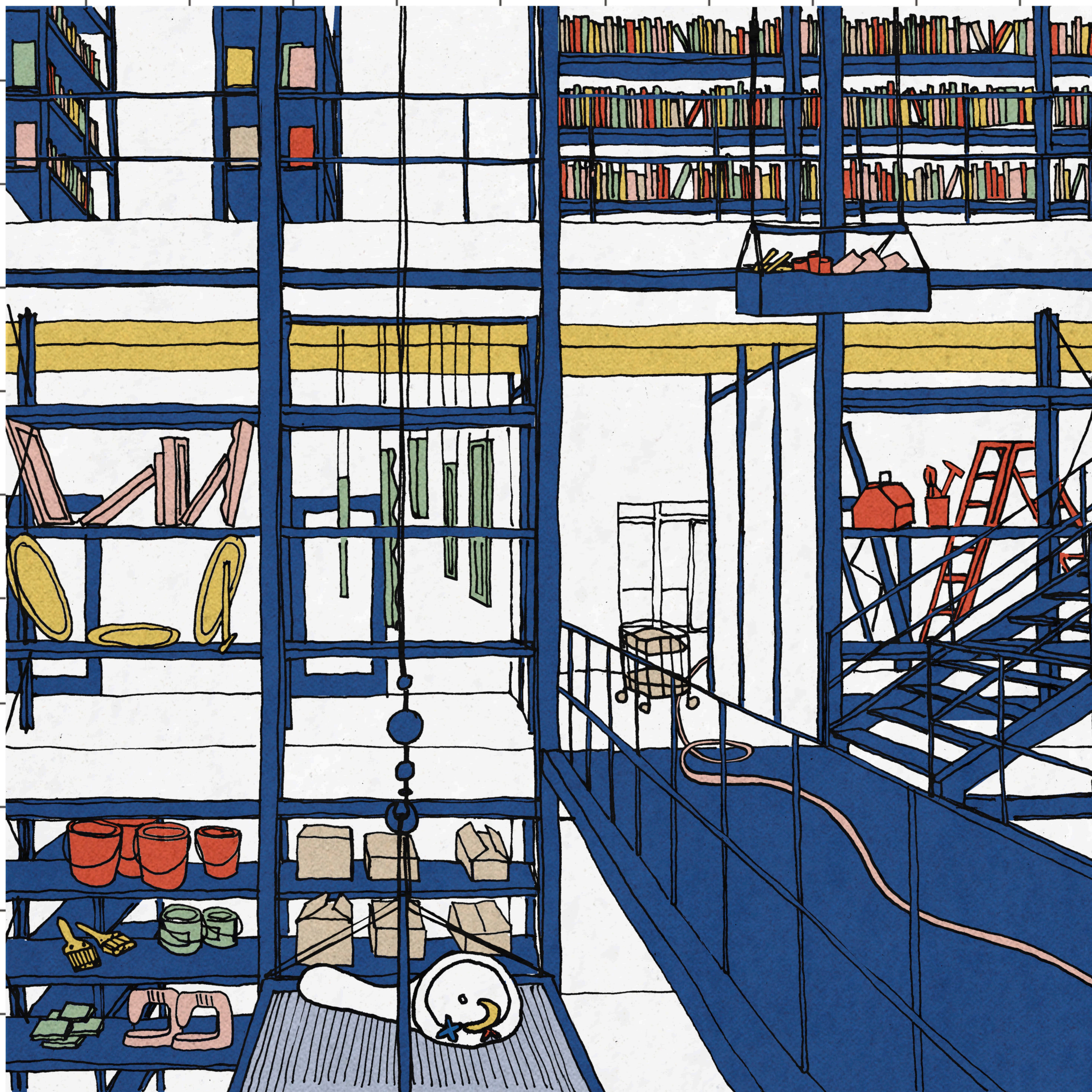


*existing*



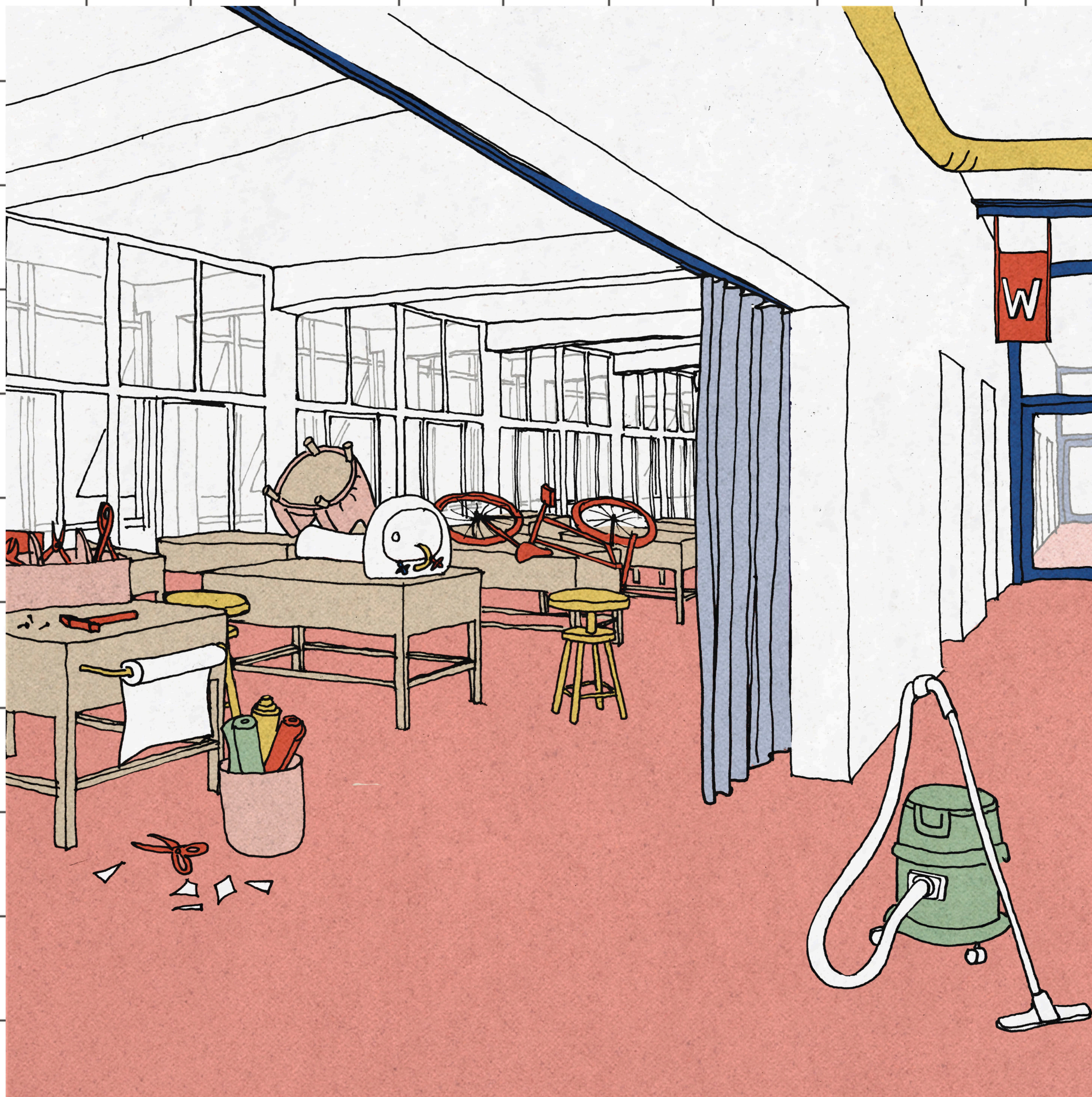






*storing*





*fixing*





testing





*exhibiting*





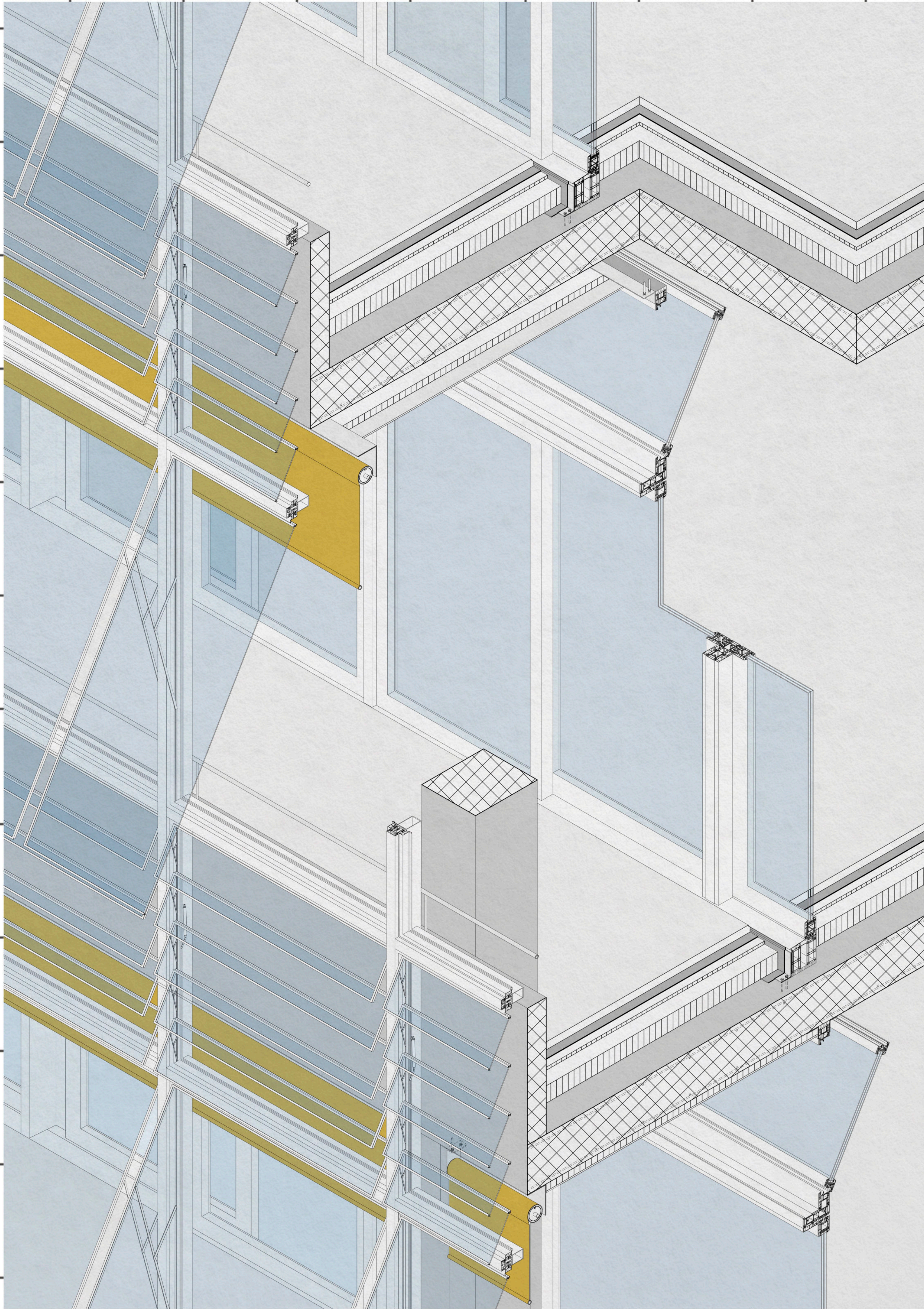
*distributing*





using





*facade*