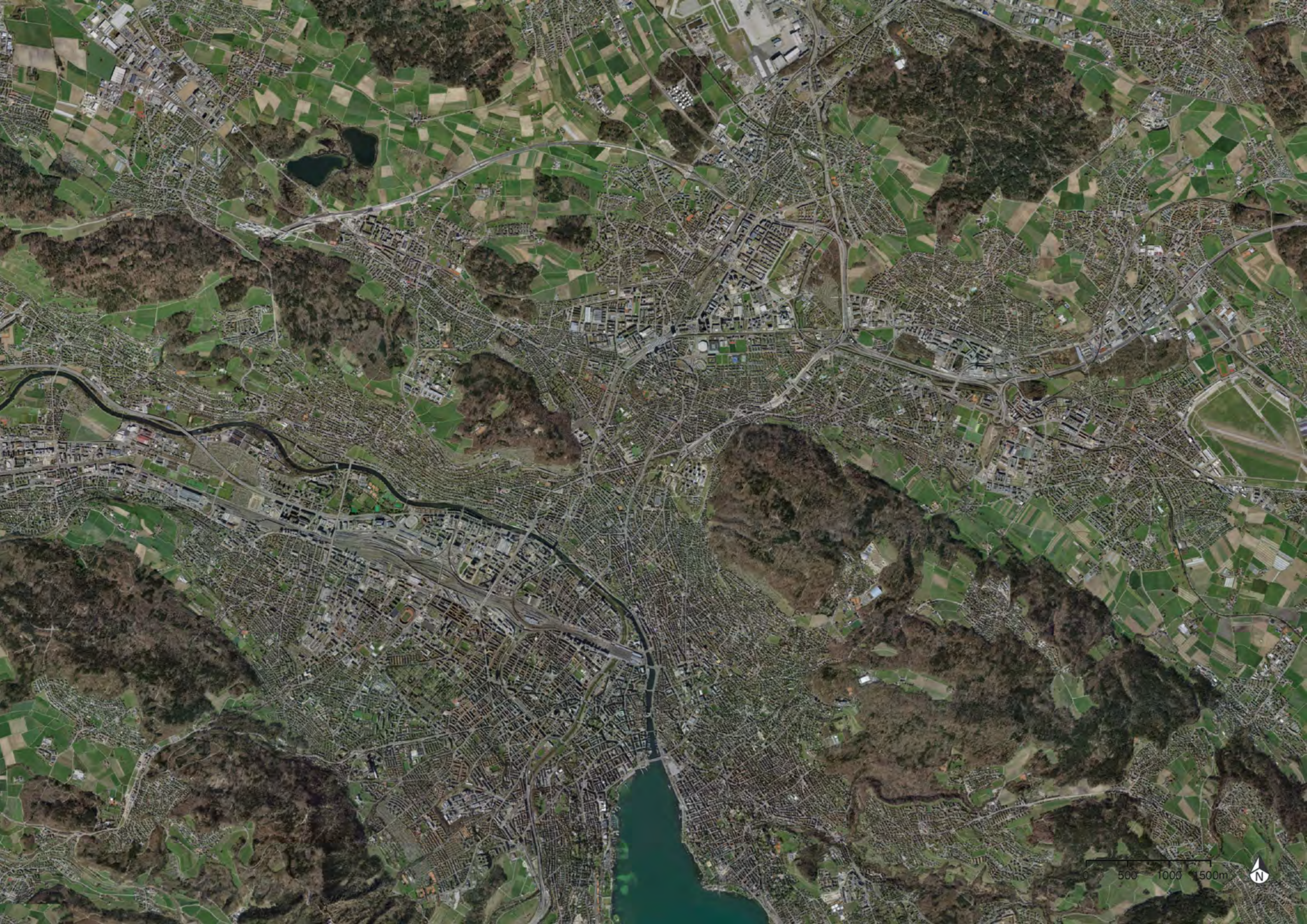


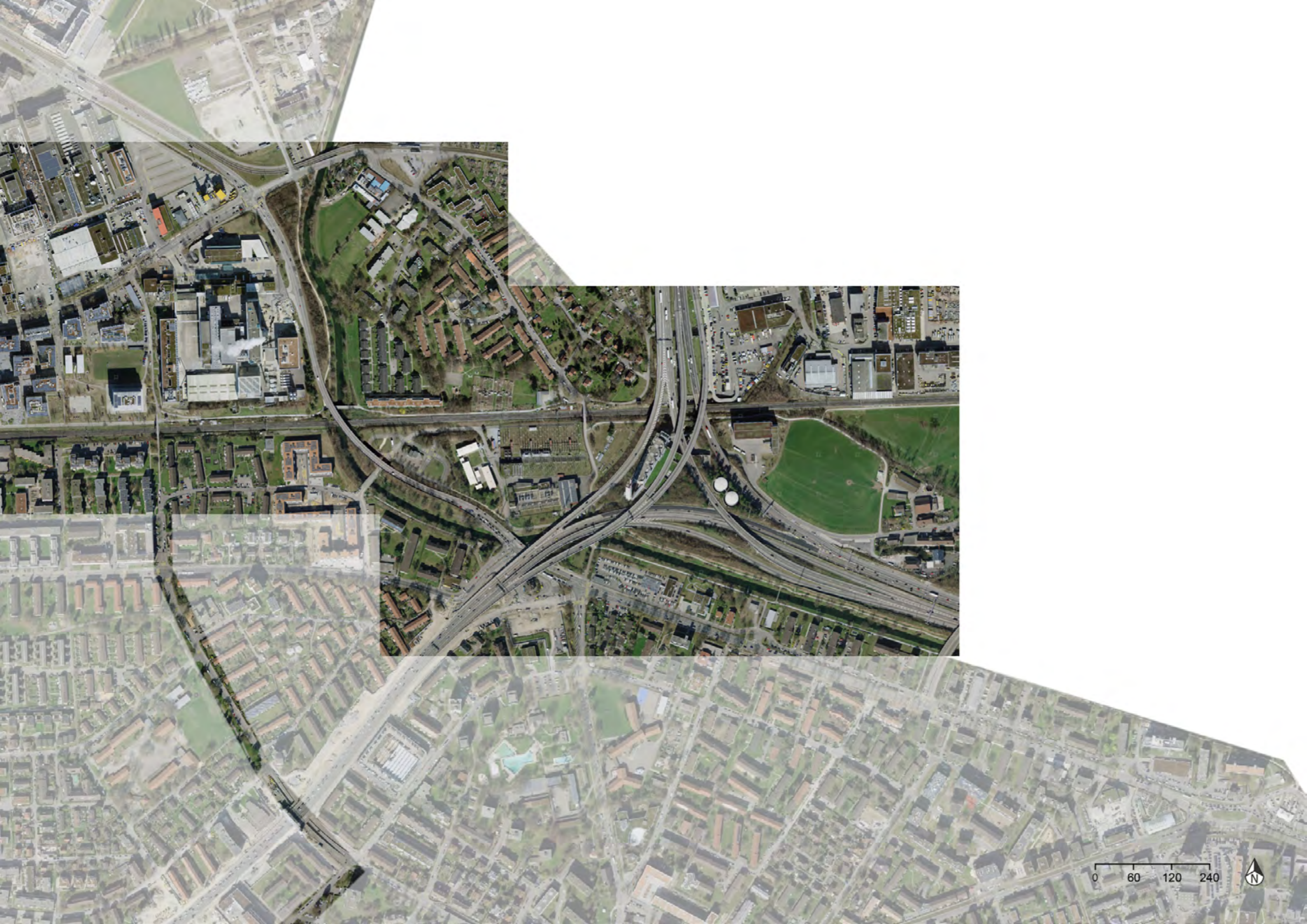
FROM HEATING PLANT TO SWIMMING POOL



0 500 1000 1500m







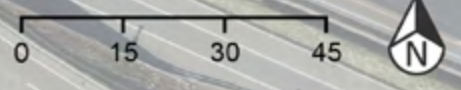
0 60 120 240





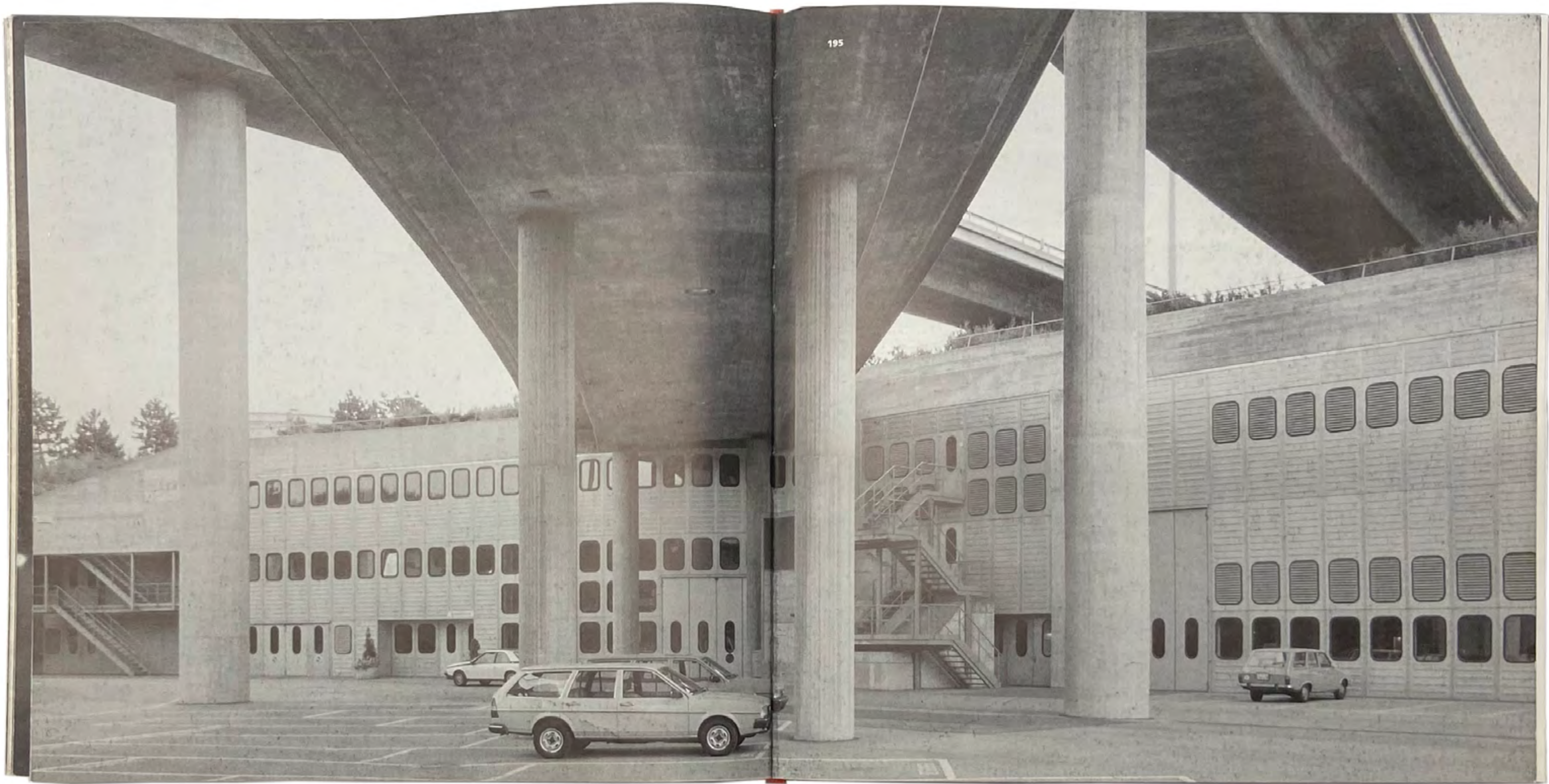
0 15 30 45



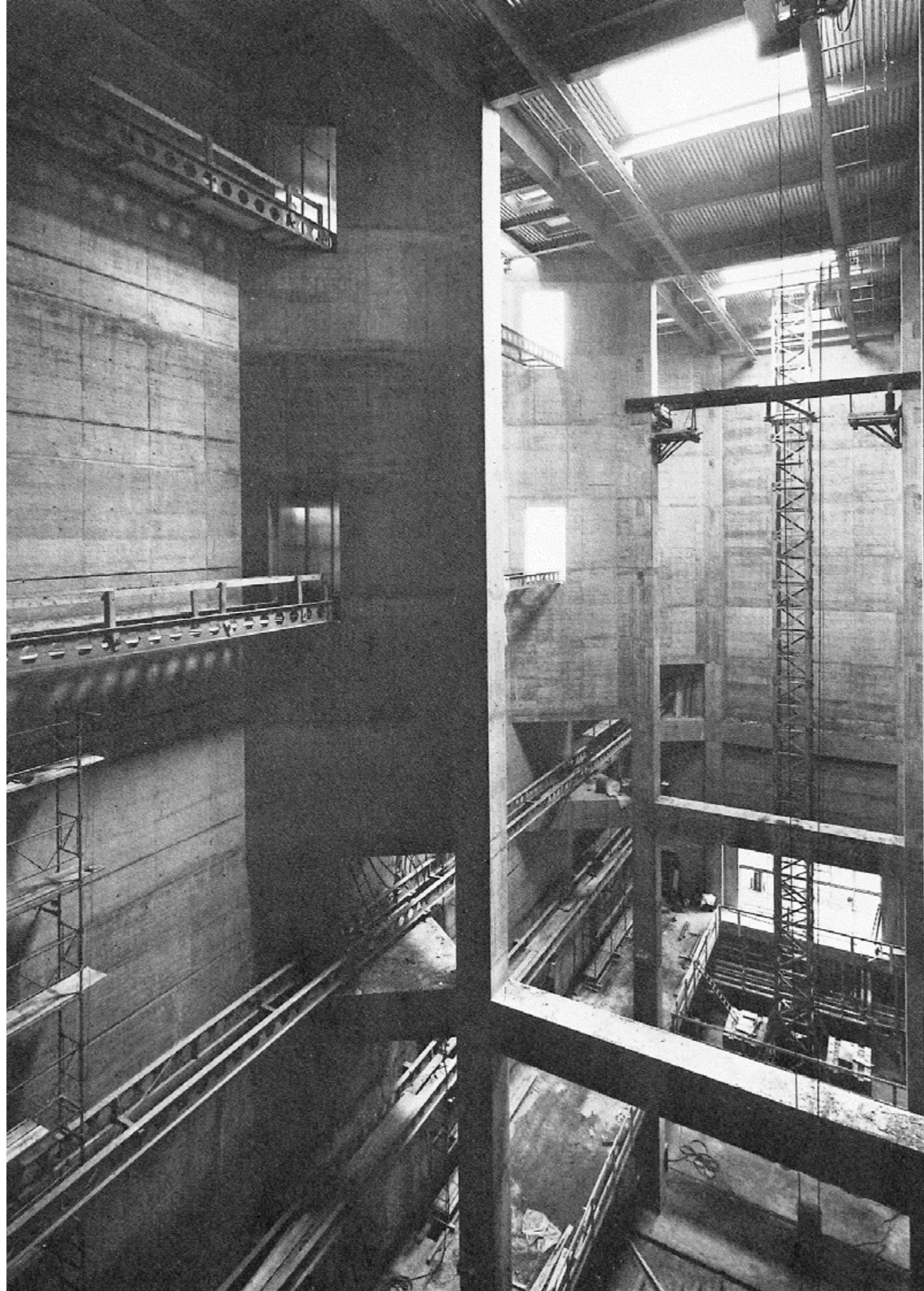




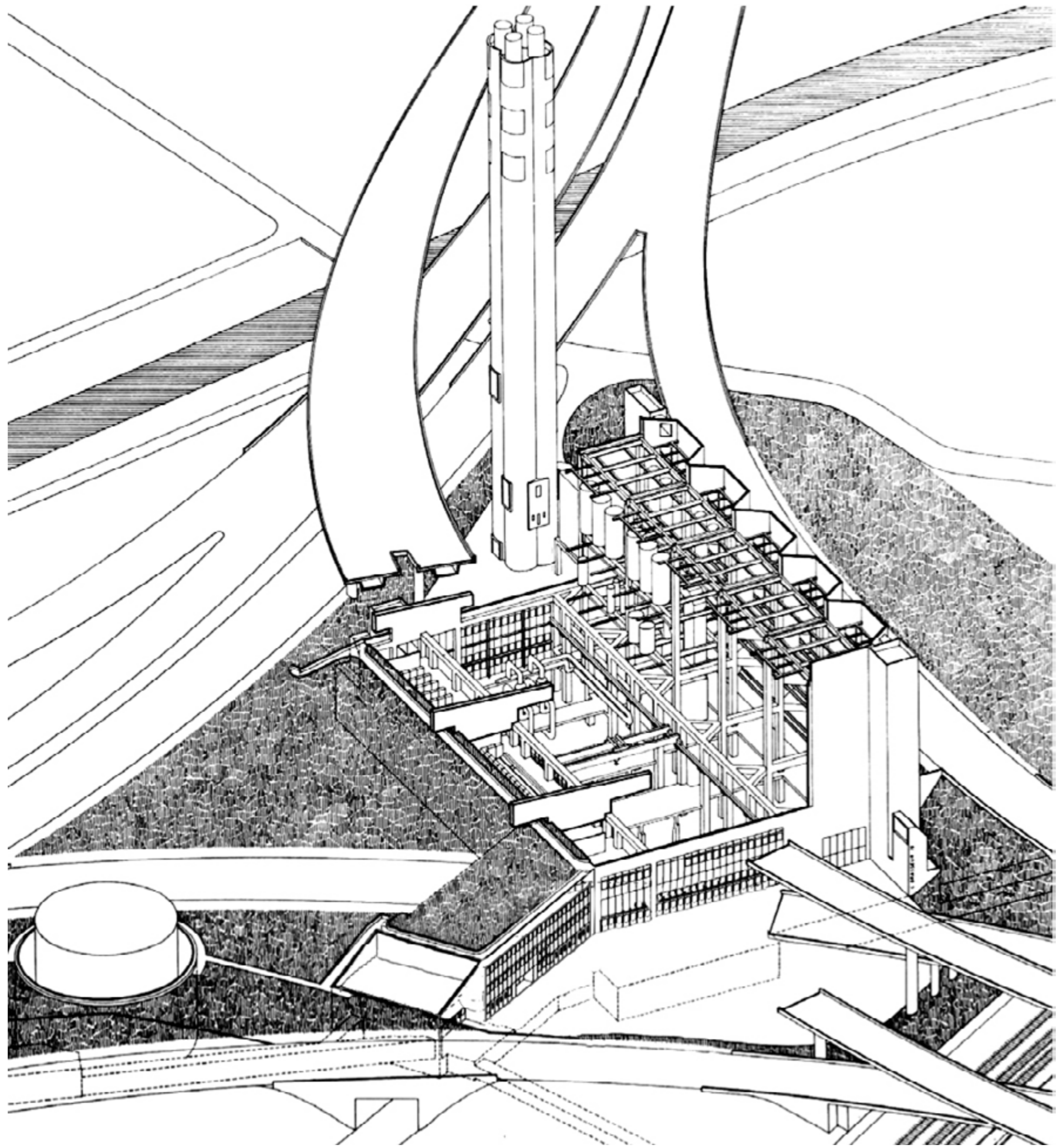


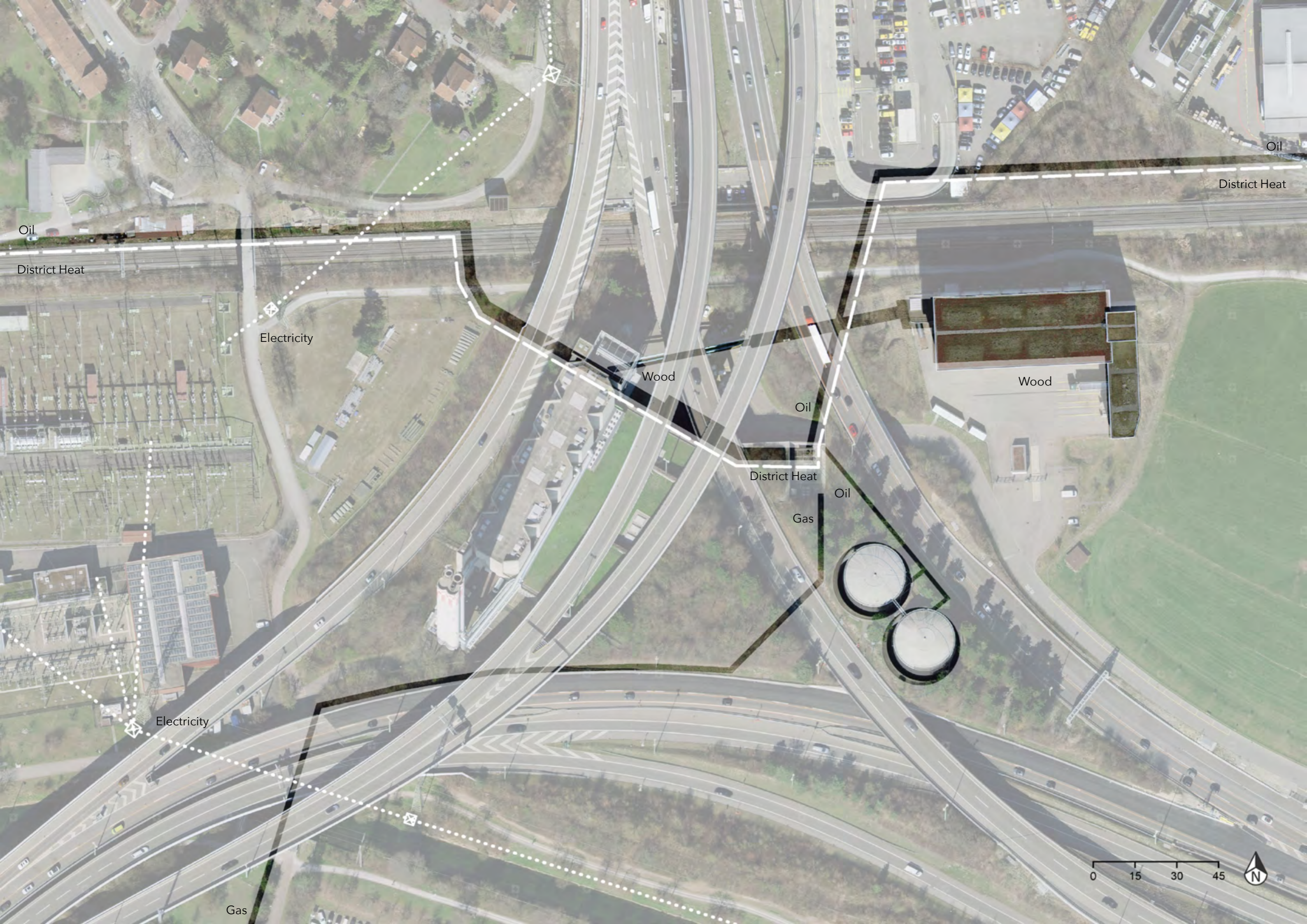












Oil

District Heat

Electricity

Wood

Oil

District Heat

Gas

Oil

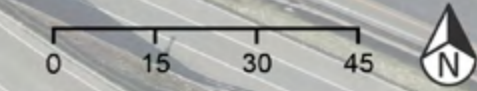
Wood

Oil

District Heat

Electricity

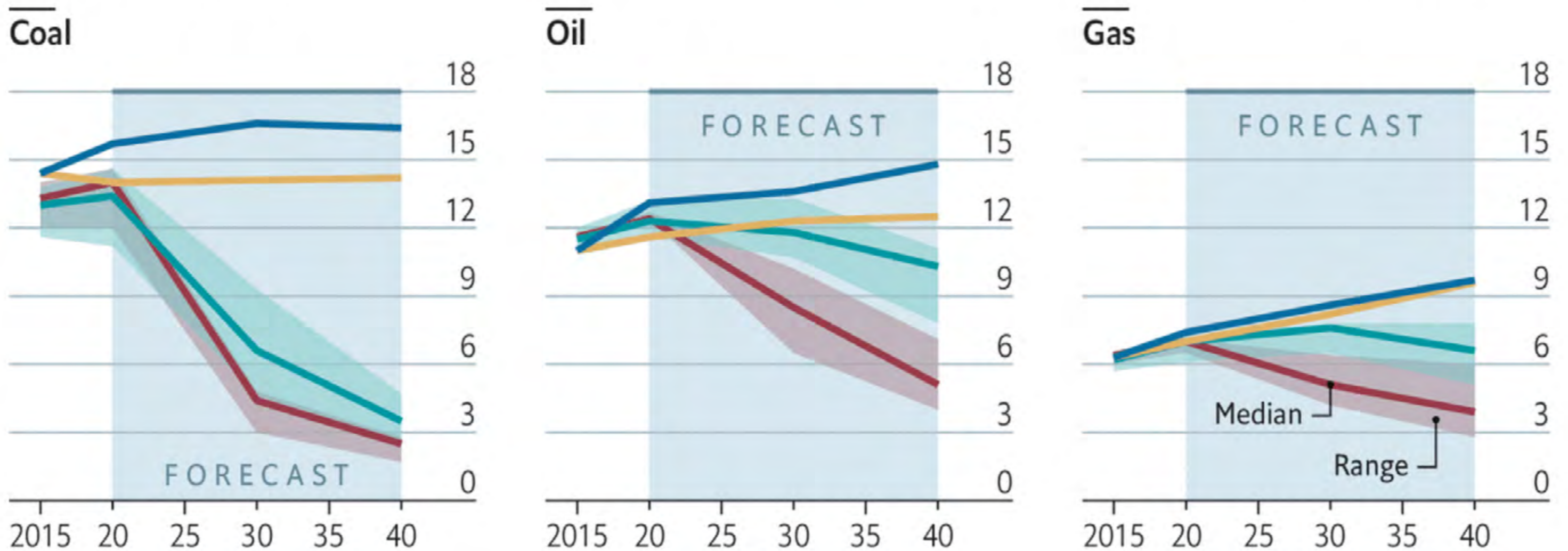
Gas

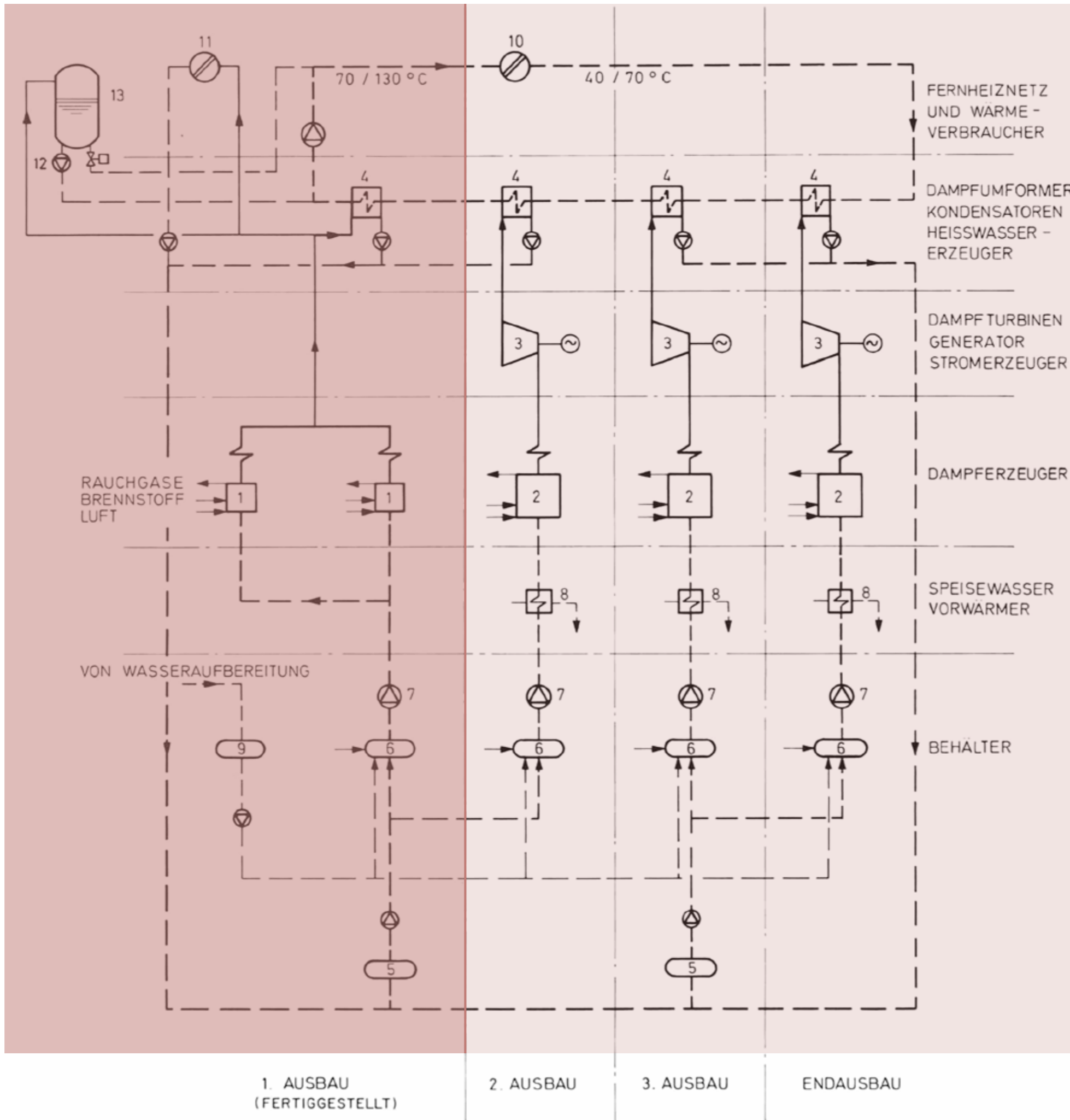


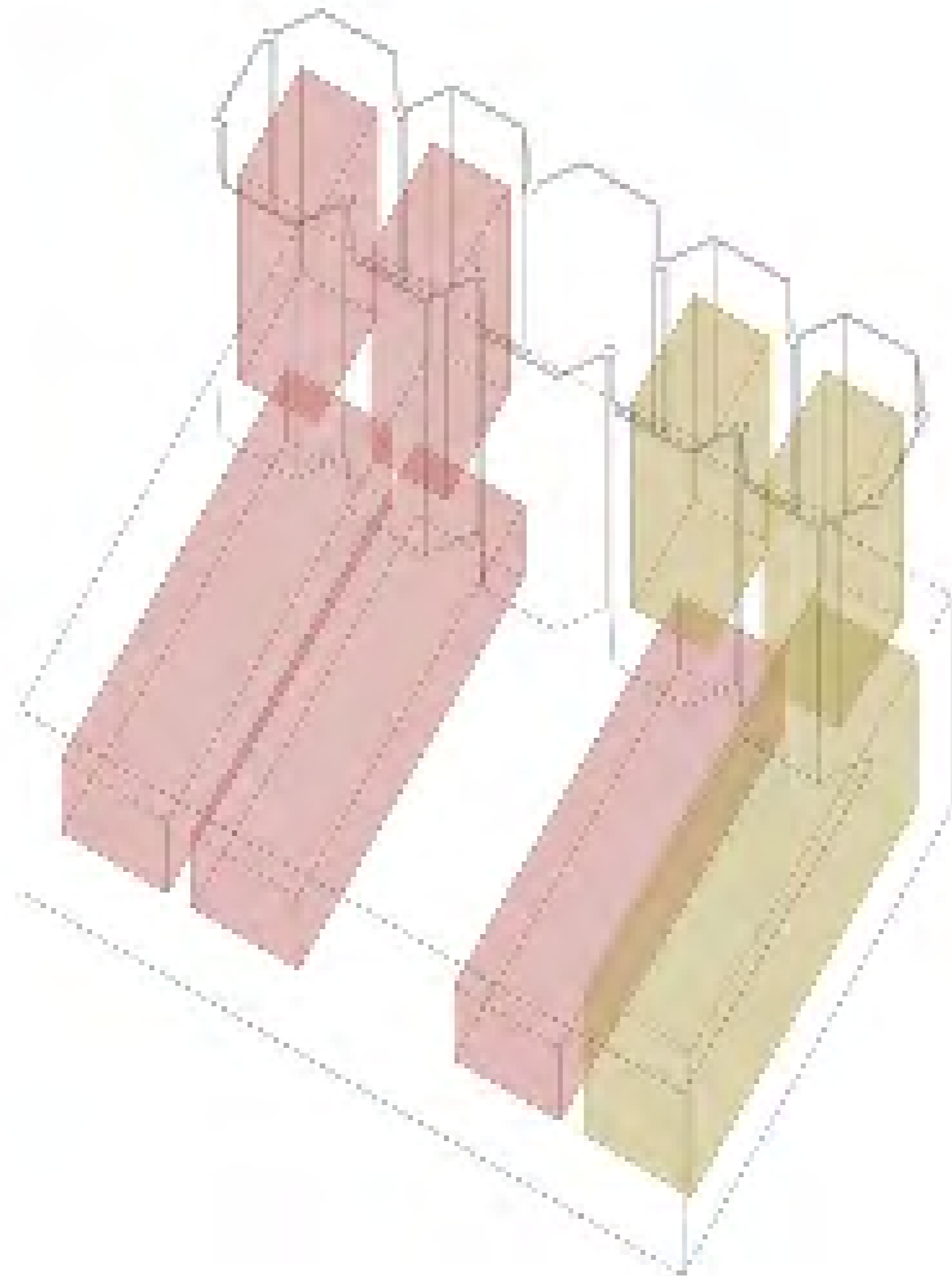
Fatal extraction

Forecast global CO₂ emissions from fossil fuels, gigatonnes per year

- Implied by countries' fossil-fuel production plans
- Implied by emissions reduction pledges
- Needed to limit global warming to 2°C
- Needed to limit global warming to 1.5°C





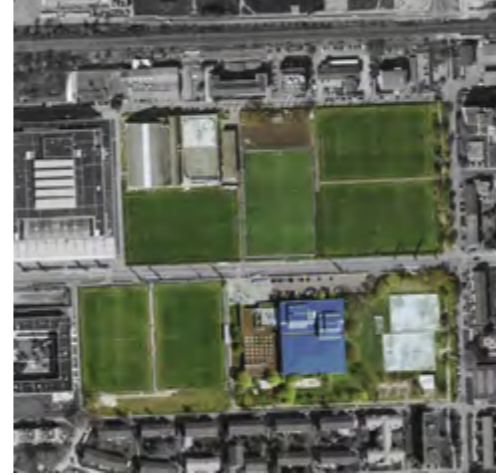


NEUBAU

SPORTZENTRUM OERLIKON

Zürich-Oerlikon

Projektwettbewerb im selektiven Verfahren



Part I

Competition

Part II

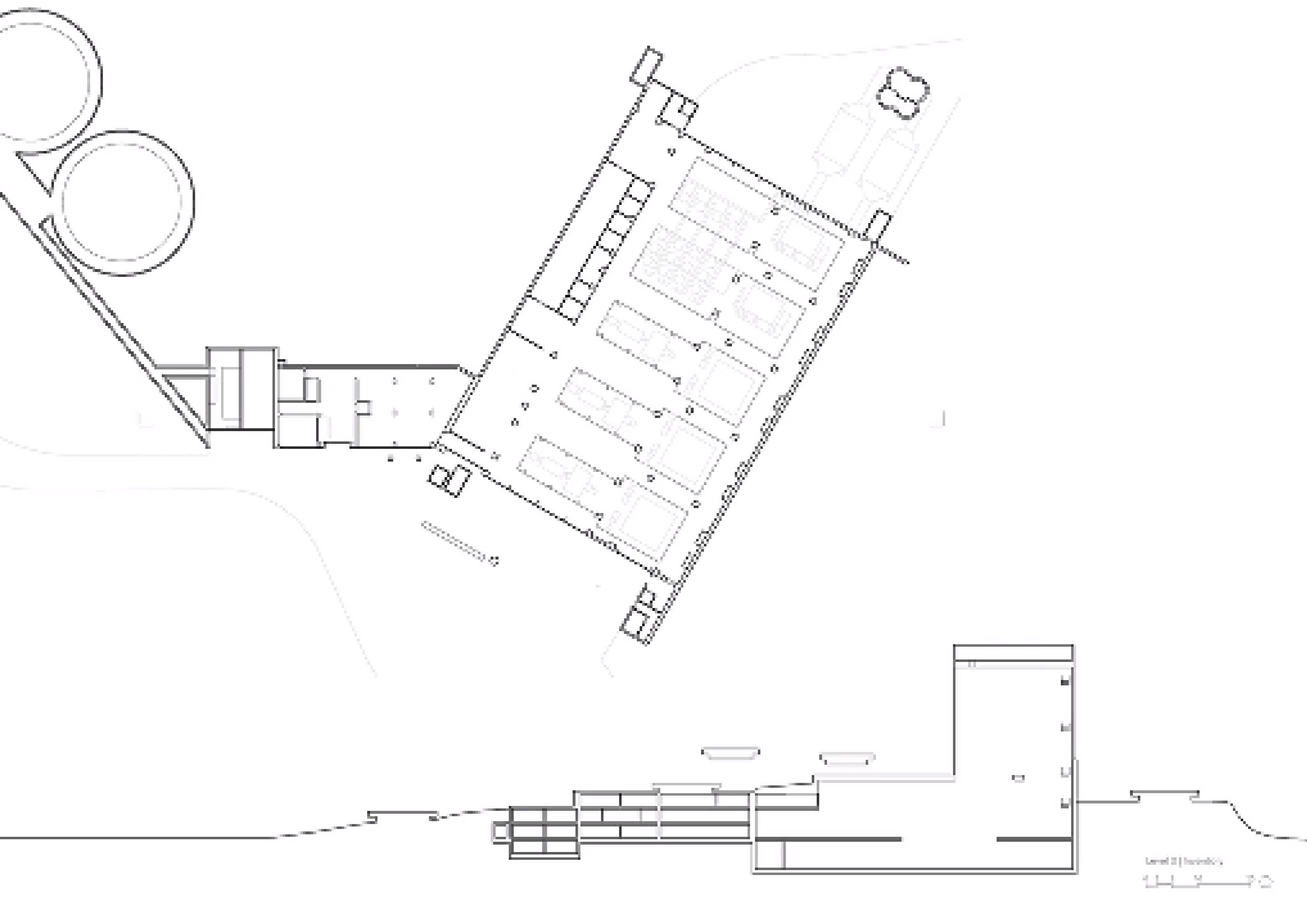
Diving

Part III

Teaching

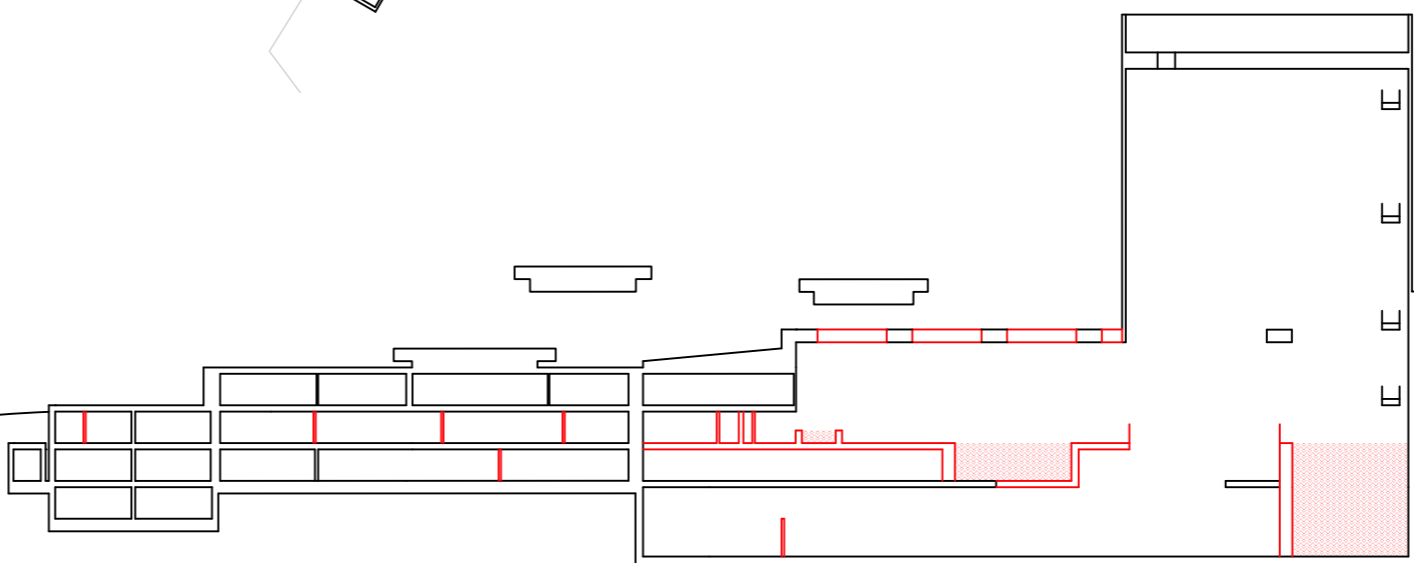
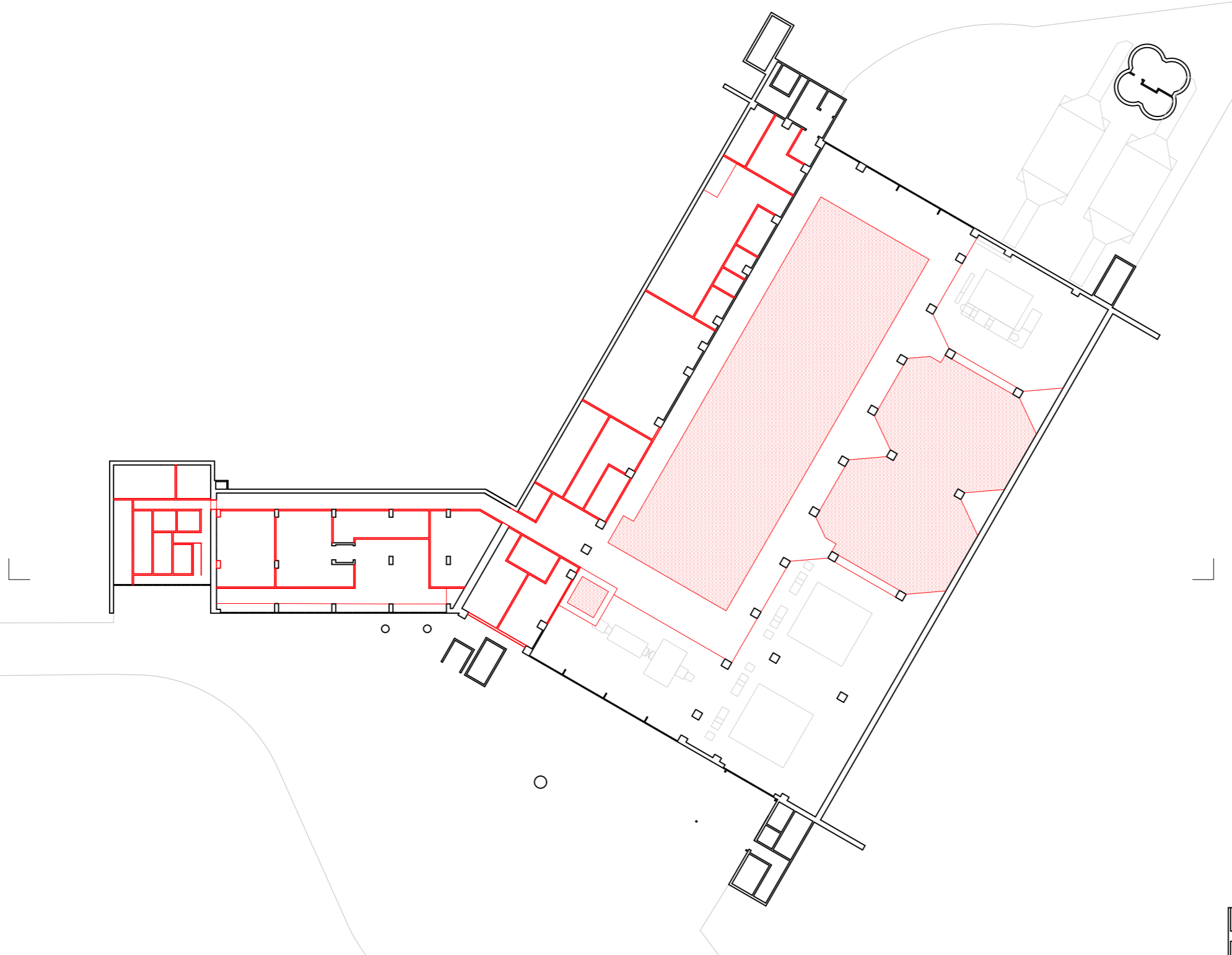
Part IV

Leisure

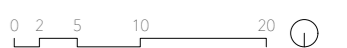


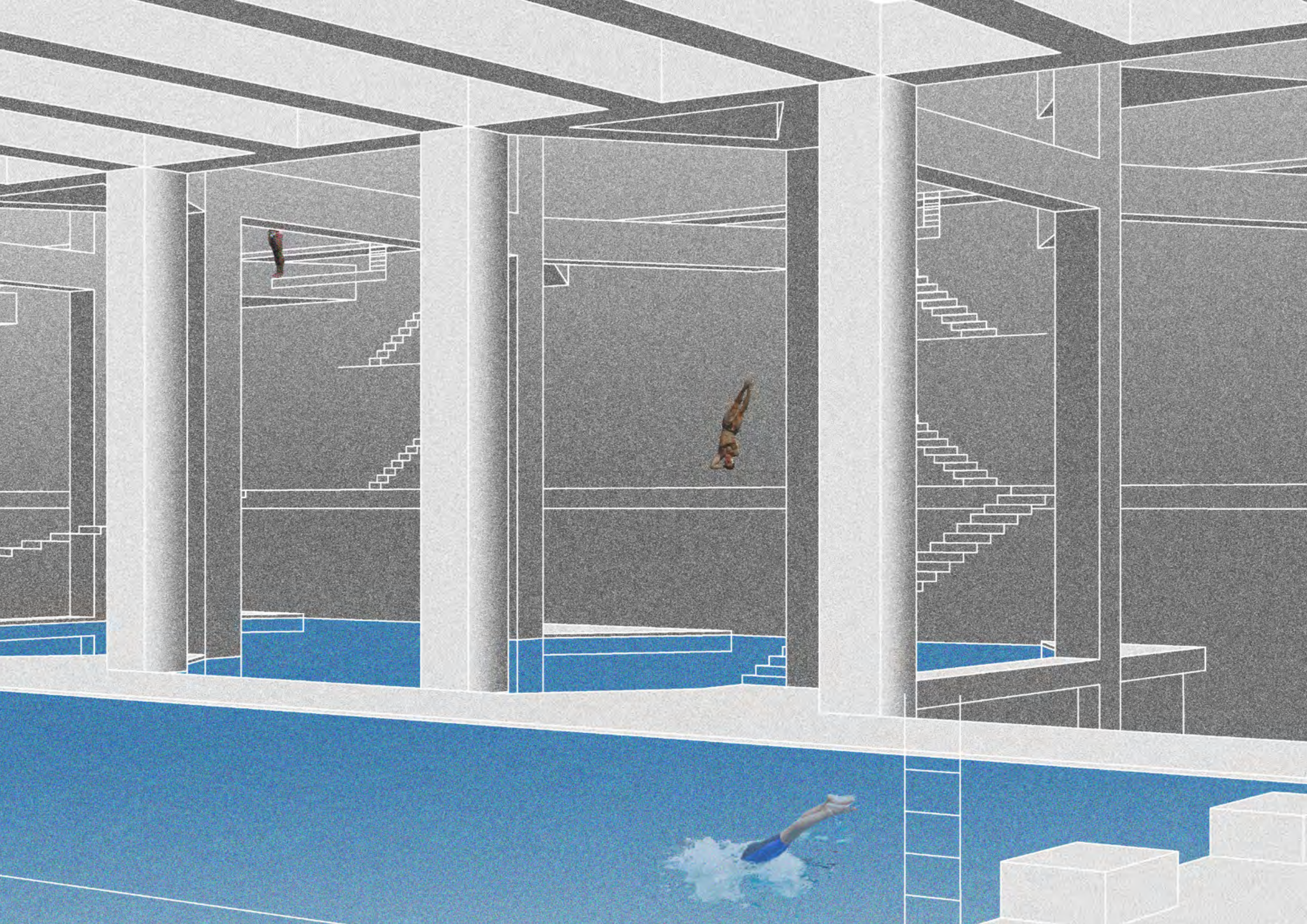
Level 2 | Terrace 001
11 M

Part I
Competition

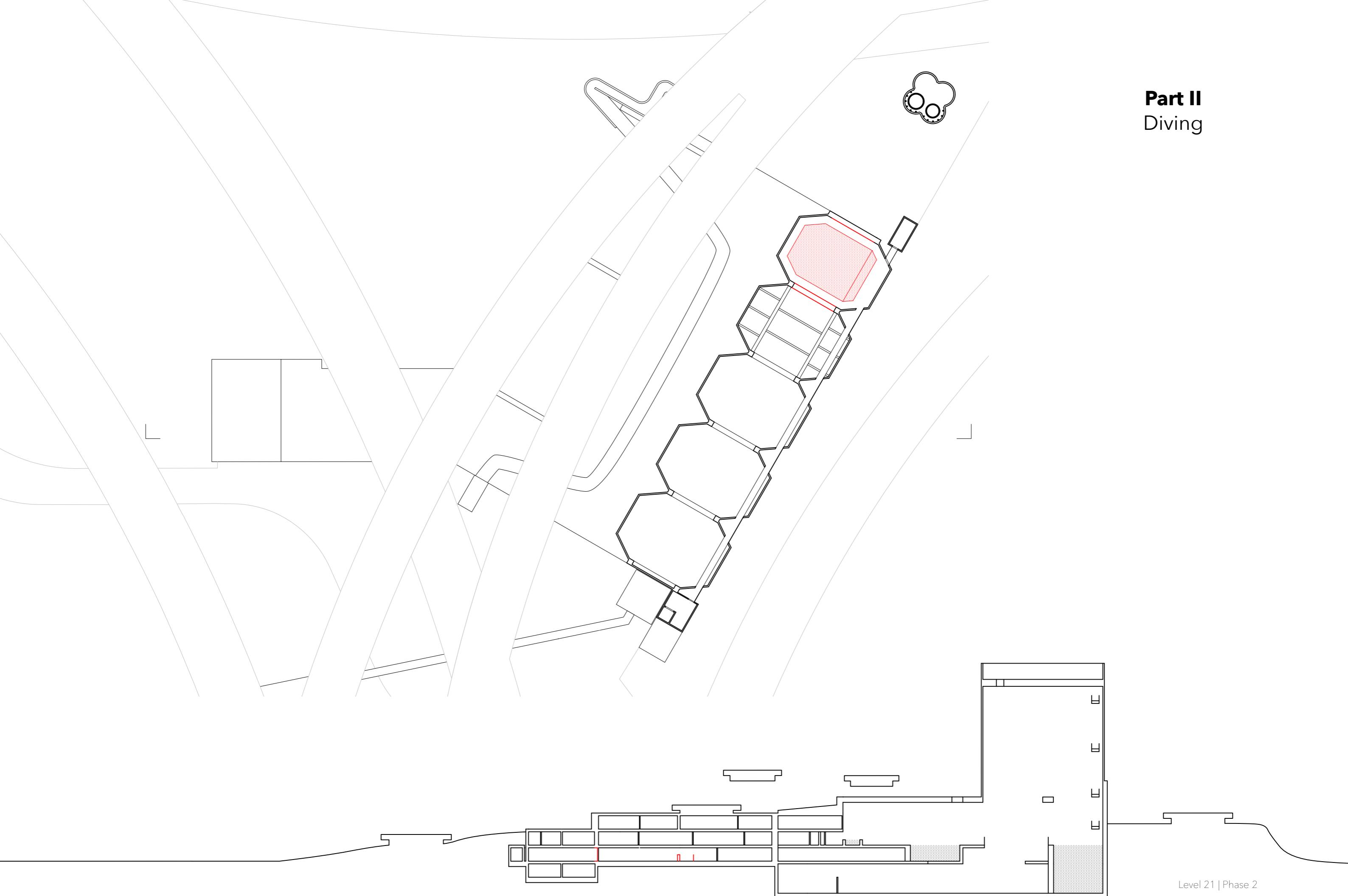


Level 3 | Phase 1



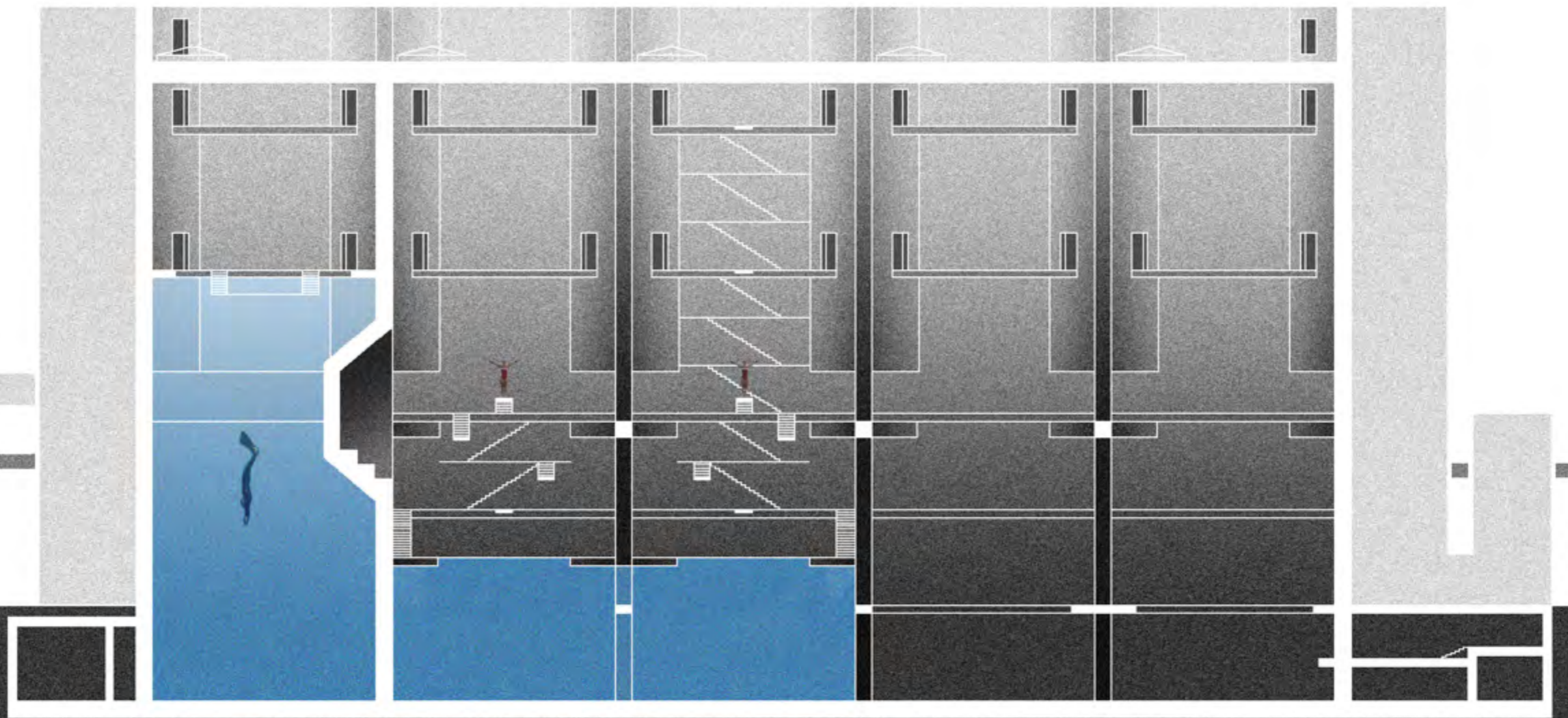


Part II
Diving



Level 21 | Phase 2

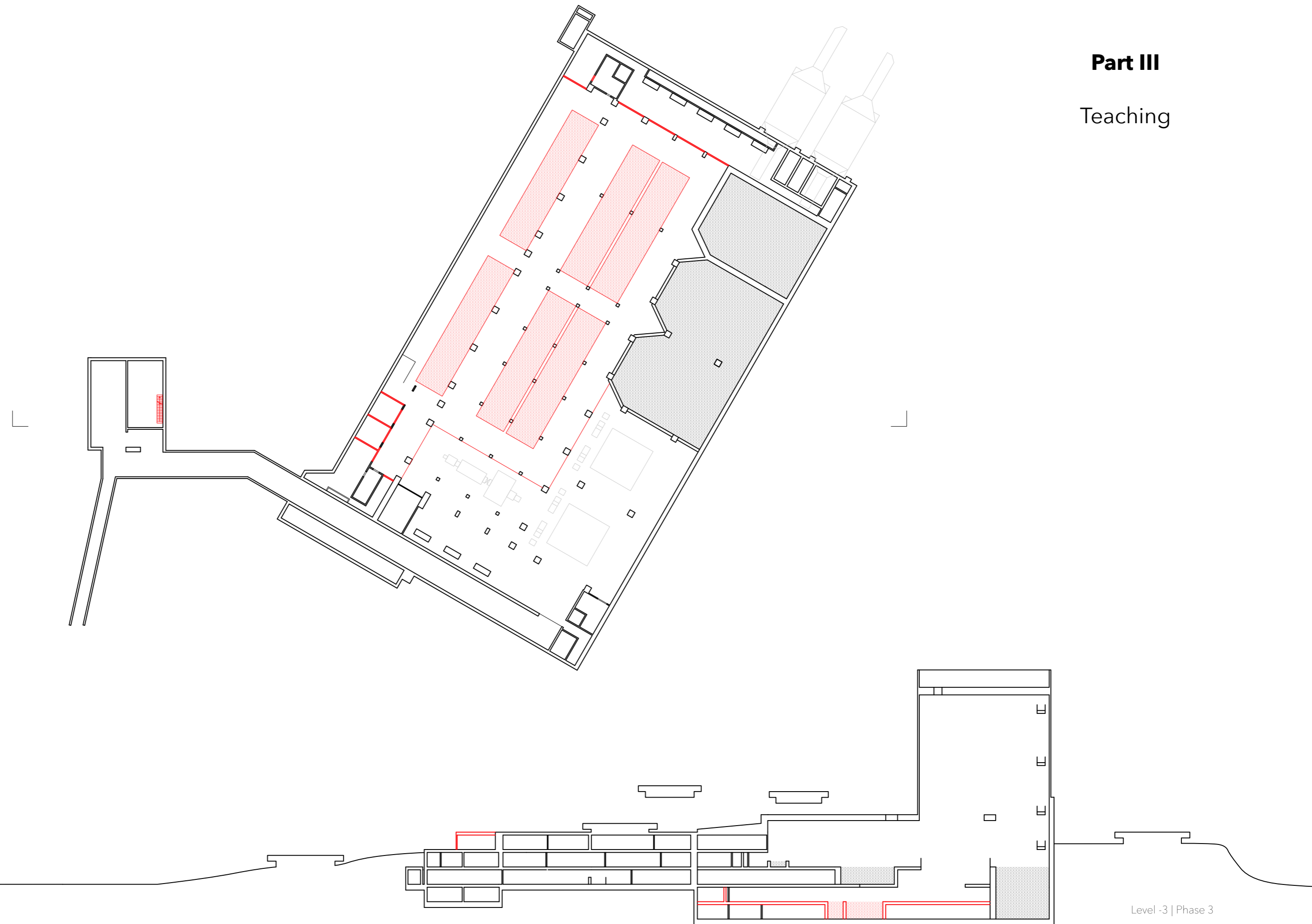




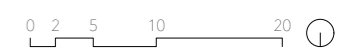
Section | Phase 3

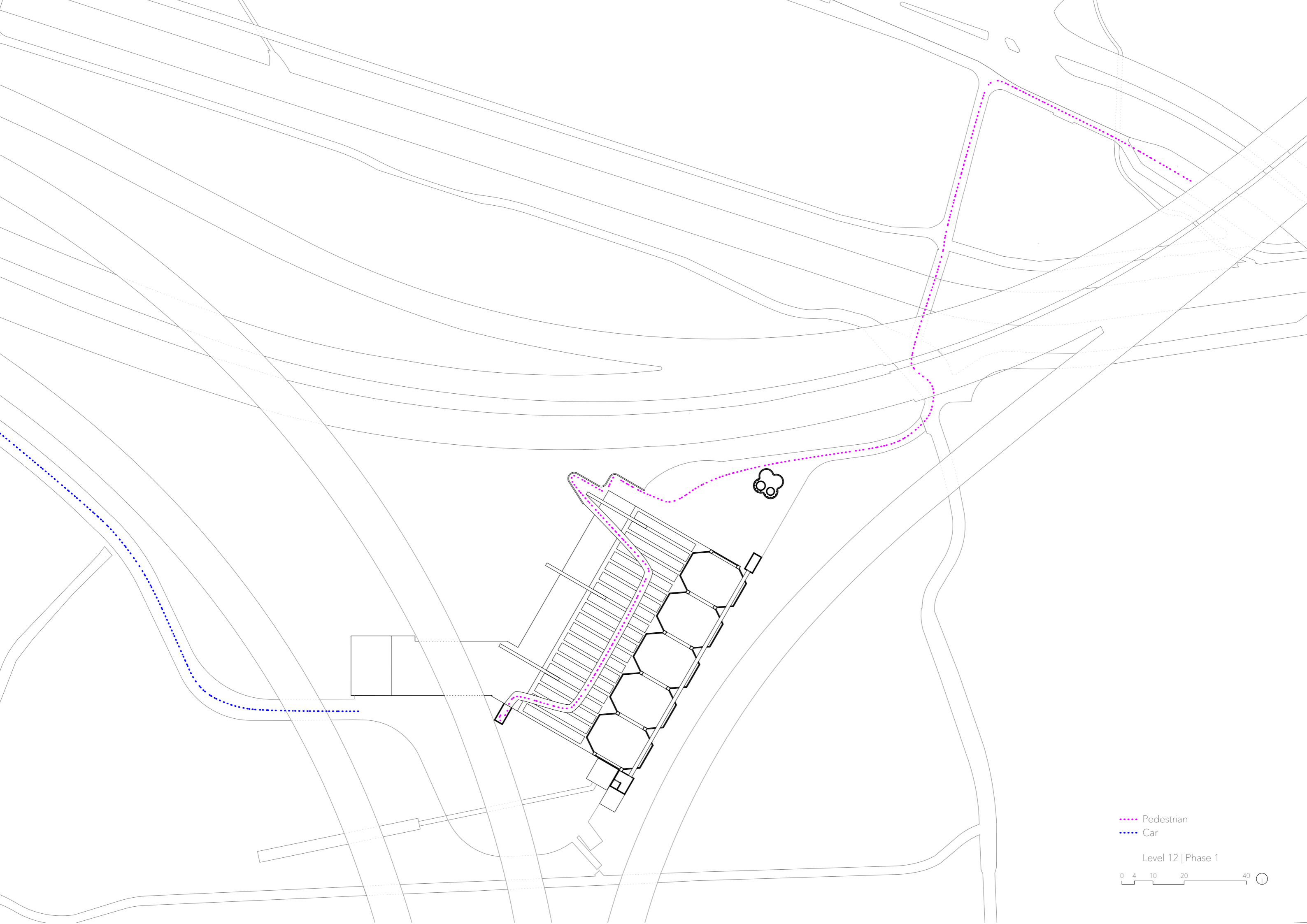


Part III
Teaching



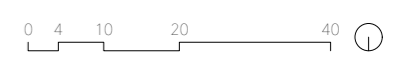
Level -3 | Phase 3





- Pedestrian
- Car

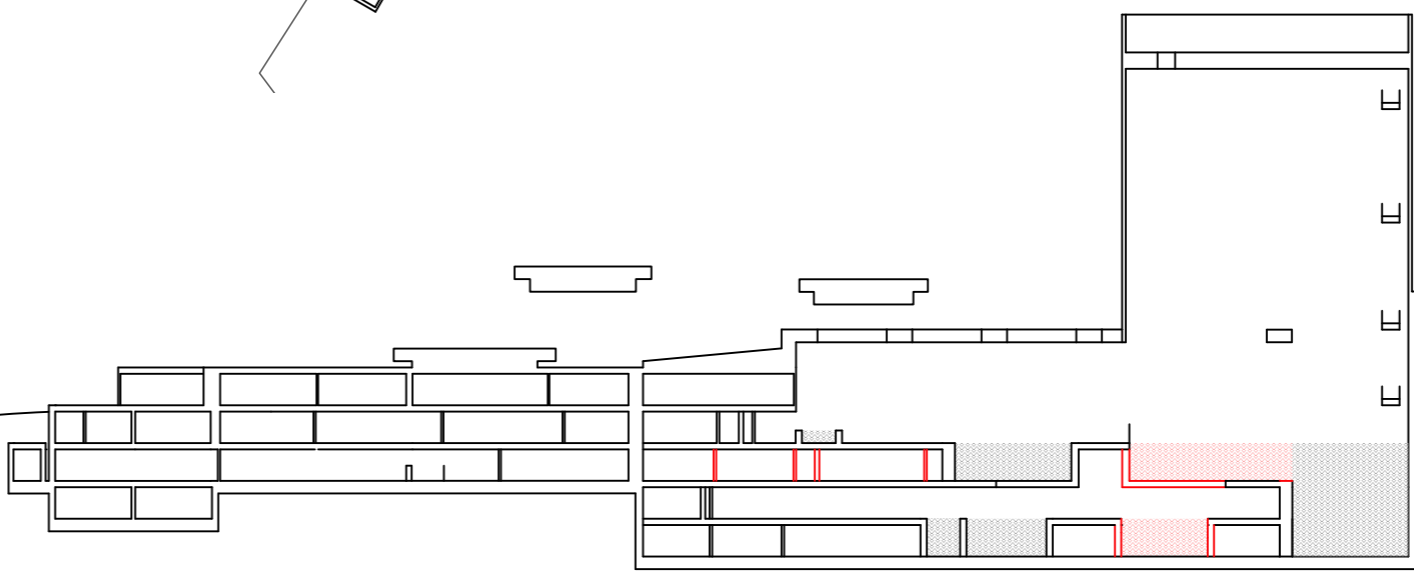
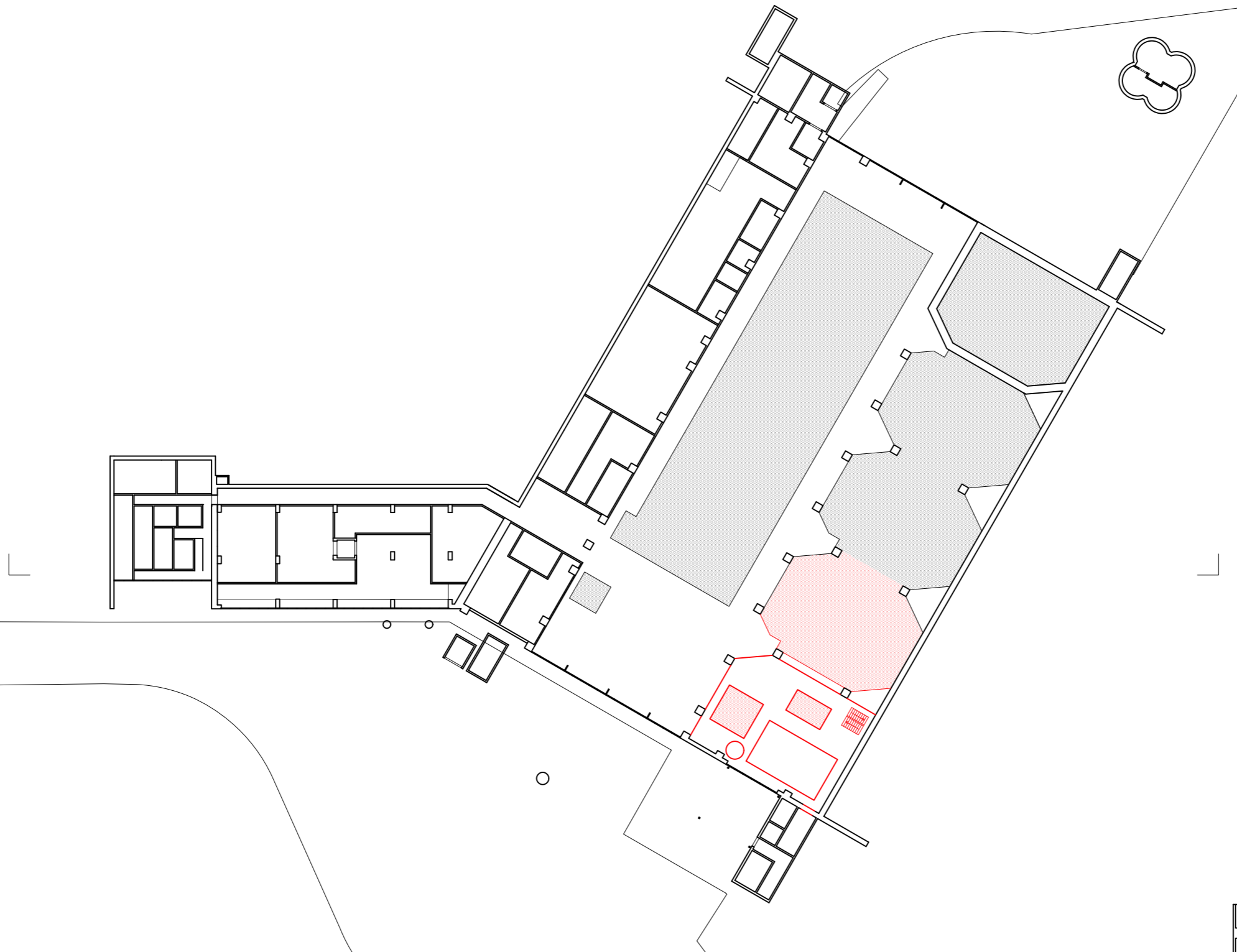
Level 12 | Phase 1





Part IV

Leisure



Level 0 | Phase 4

