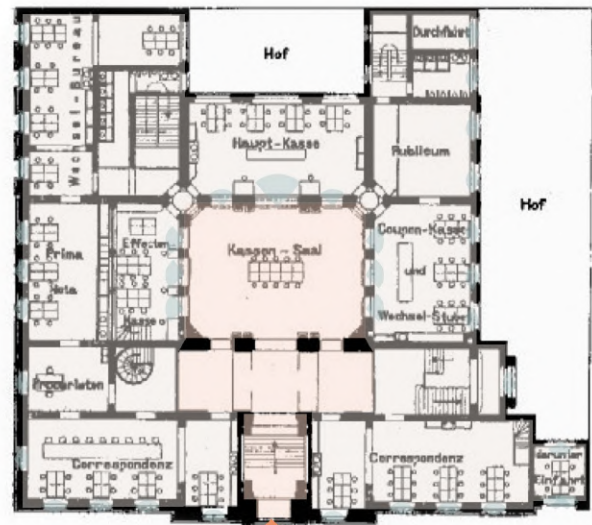
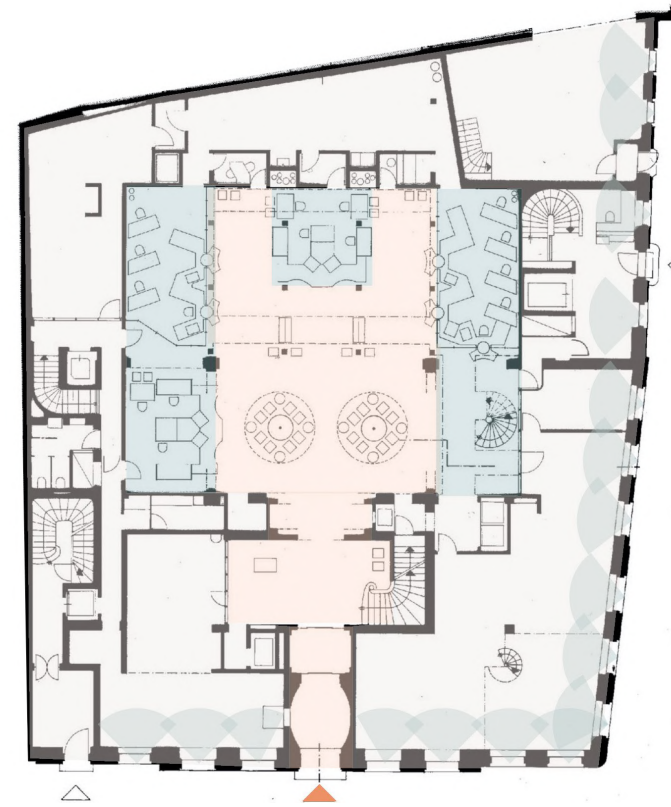


# Private Banking Zürich

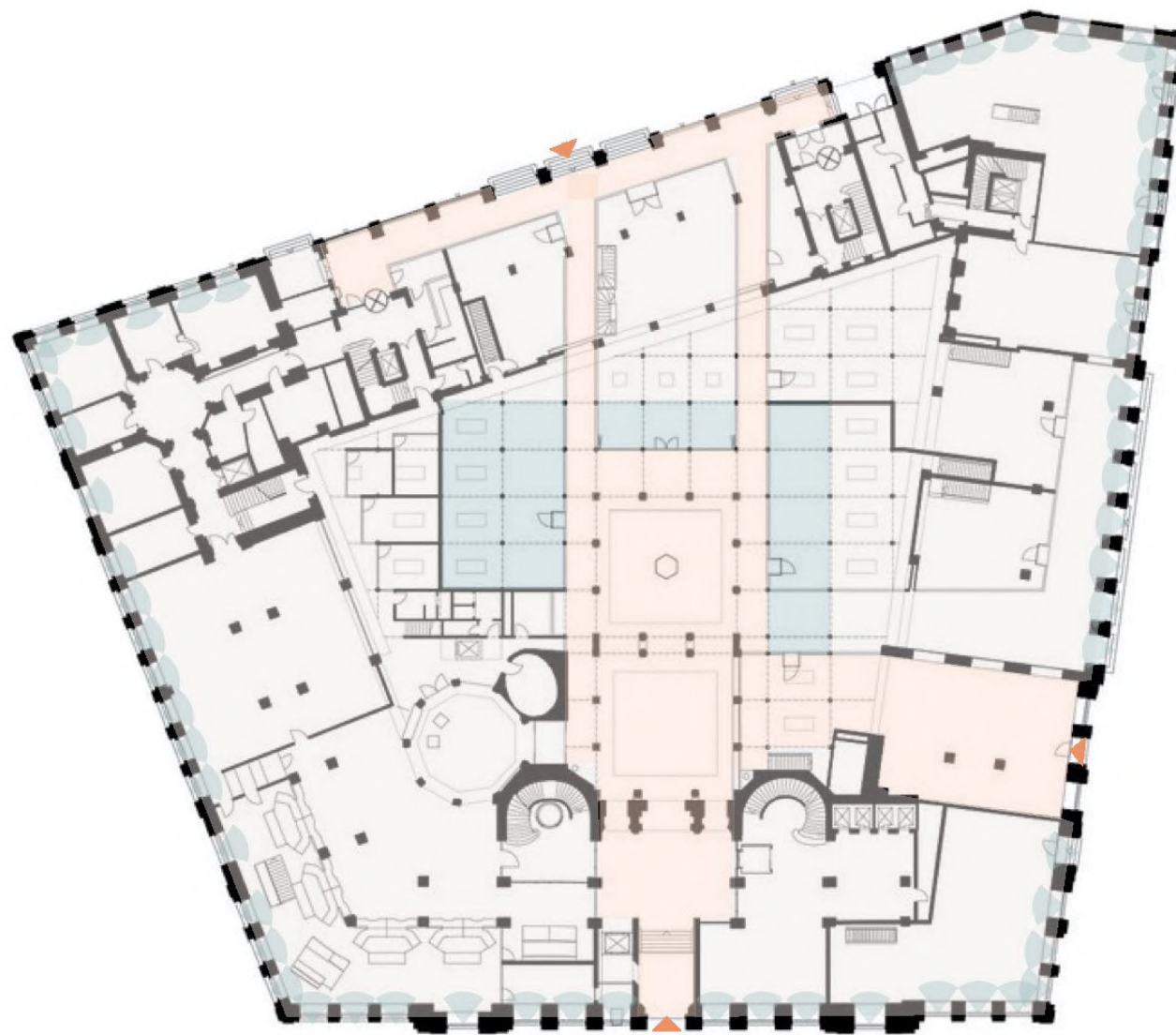
Chiara Bosshard



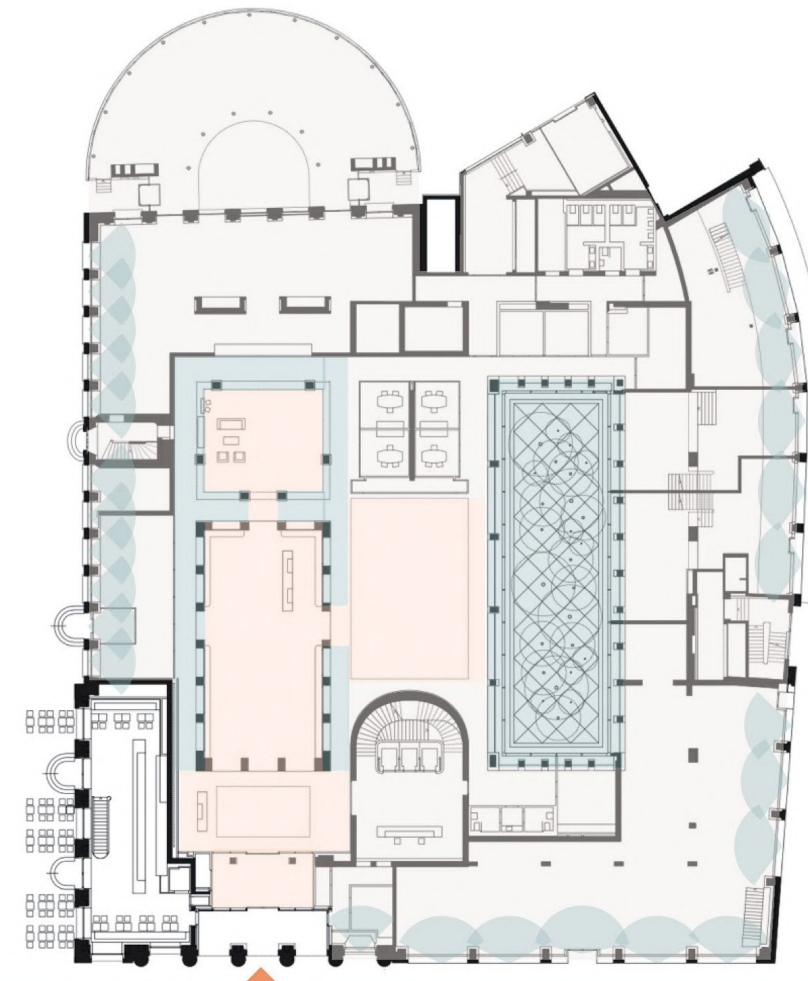
Ehemalige Dresdner Bank HQ - Berlin



Spar- und Leihkasse - Bern



Credit Suisse - Zürich



UBS - Zürich

Öffentlich
  Ermöglichte Einblicke
  Privat



Erste Zentrale - Wien - vor 1840 - Sparkasse



Credit Suisse - Zürich - 1873 - Grossbank



Ehemalige Länderbank - Wien - 1884 -



Dresdner Bank - Berlin - 1889 - Grossbank



Österreichische Postsparkasse - Wien - 1906 - Sparkasse



Bank Austria ehem. Zentrale - Wien - 1912 - Universalbank



Schweizerische Nationalbank - Bern - 1912 - Zentralbank



Banque Heritage - Genf - 1913 - Privatbank



Spar- und Leihkasse - Bern - 1913 - Sparkasse



Alternative Bank - Olten - ca. 1915 - Alternative Bank



Julius Bär - Zürich - vor 1920 - Privatbank



UBS - Zürich - 1945 - Grossbank





Allied Irish Bank - The LAB Store - Dublin



Emirates NBD - Test and Learn Showcase - Dubai



Islandsbanki - Community Banking - Kopavogur



JP Morgan Chase - New Flagship Store - New York



Allied Irish Bank - The LAB Store - Dublin



Emirates NBD - Test and Learn Showcase - Dubai



Islandsbanki - Community Banking - Kopavogur

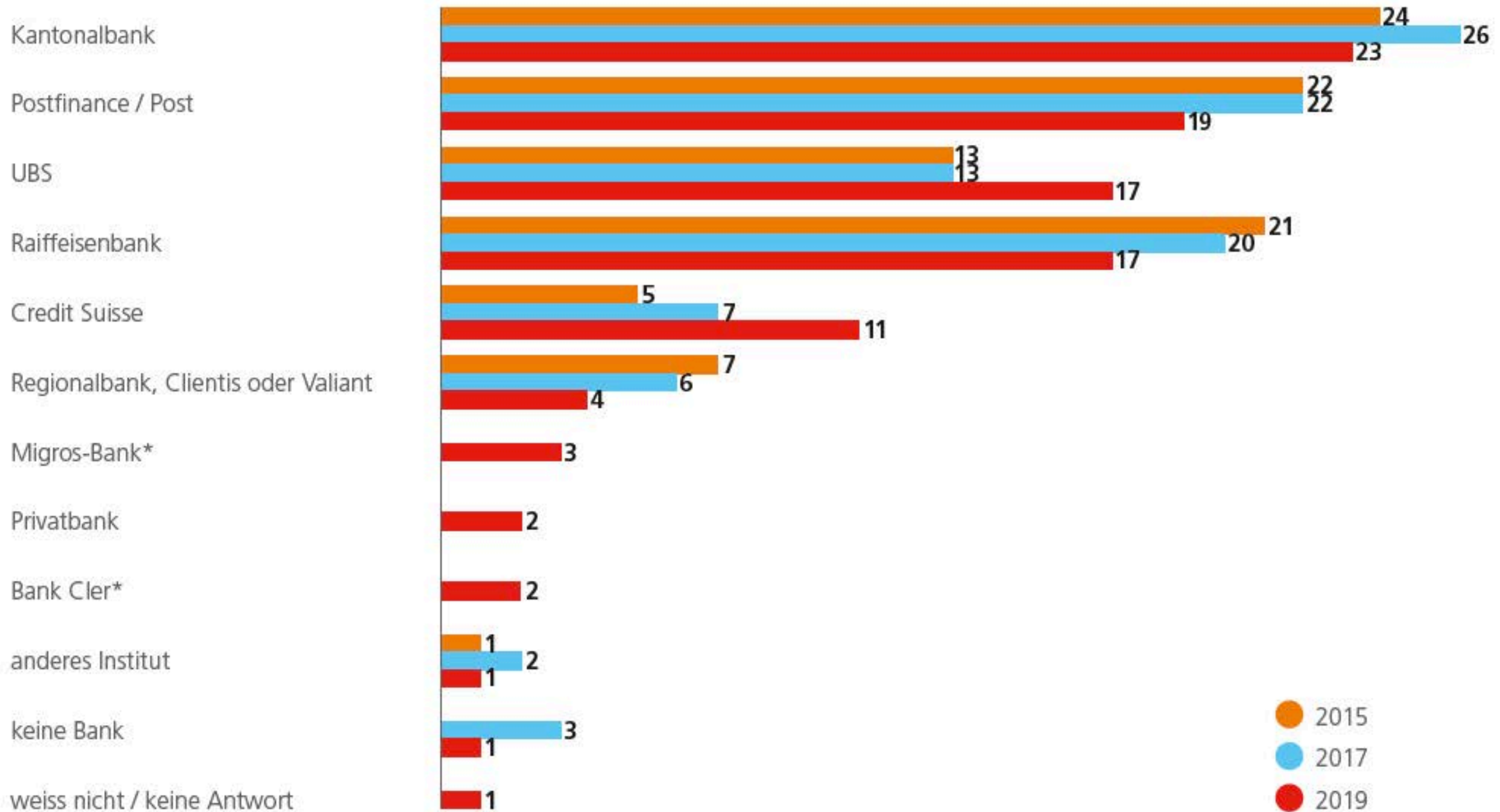


JP Morgan Chase - New Flagship Store - New York

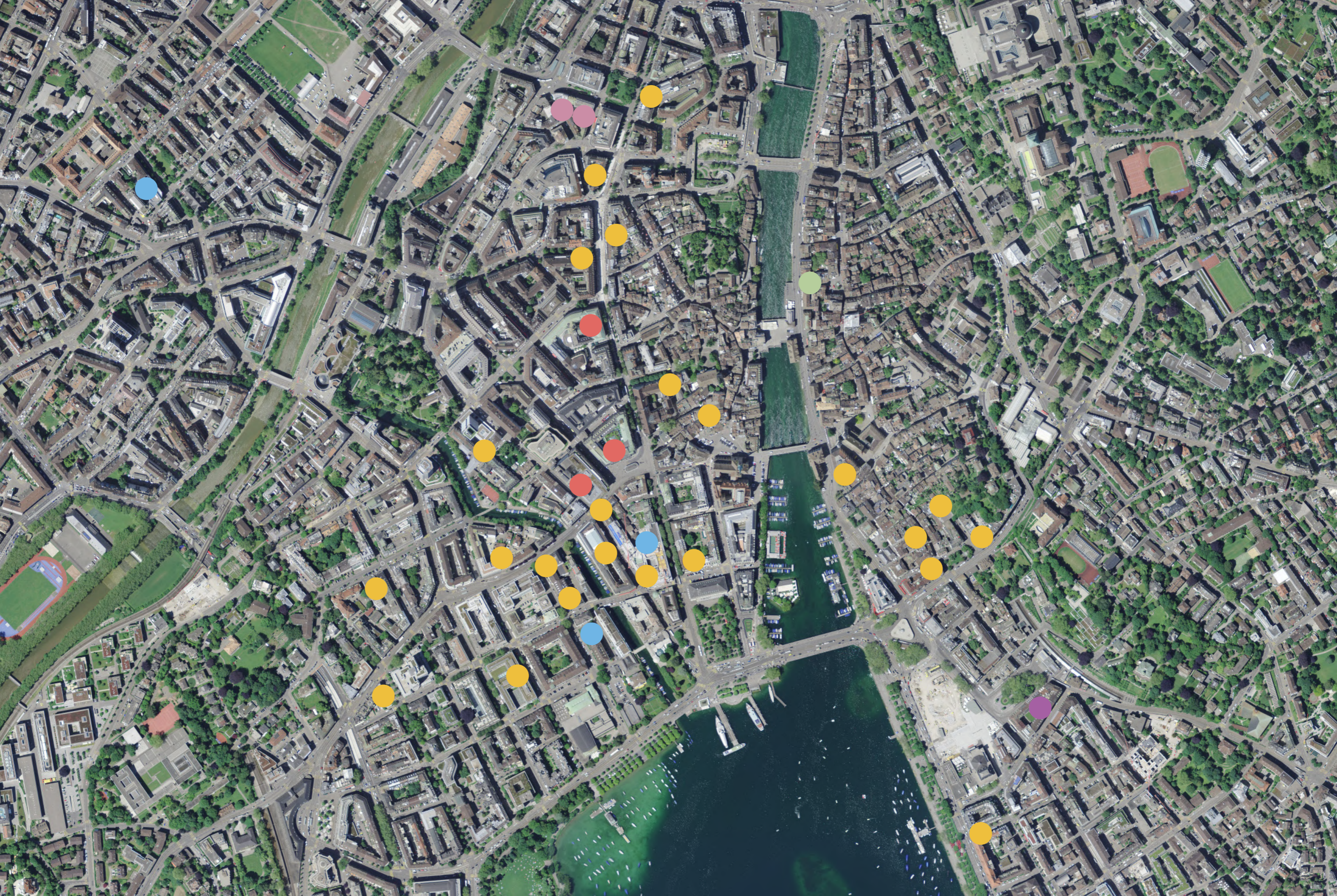
## Hauptbank

«Welches ist das Finanzinstitut, Bank oder Post, mit dem Sie am meisten verkehren?»

in % Stimmberechtigte (N = 1'000)



\* bis 2017: Migros Bank / Bank Coop



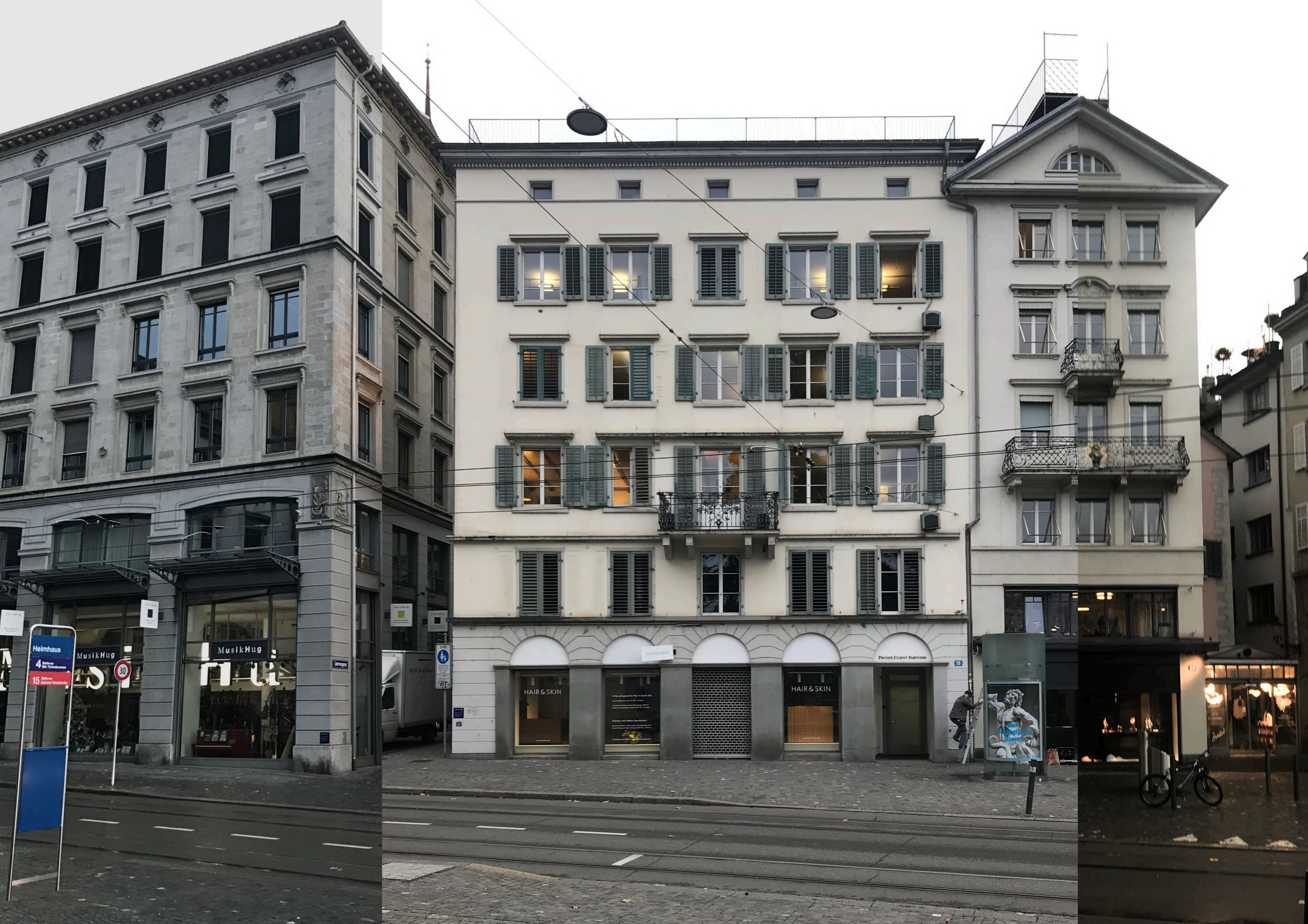
-  Grossbank
-  Kantonalbank
-  Raiffeisen/ Genossenschaftsbank
-  Regionalbank / Sparkasse
-  Migros Bank / Bank Cler
-  Privatbank







© by www.schweizer.ch / D. Linsky



Heimhaus  
4 Rufnummern  
15 Rufnummern

MusikHug

MusikHug

30

HAIR & SKIN

HAIR & SKIN

HAIR & SKIN

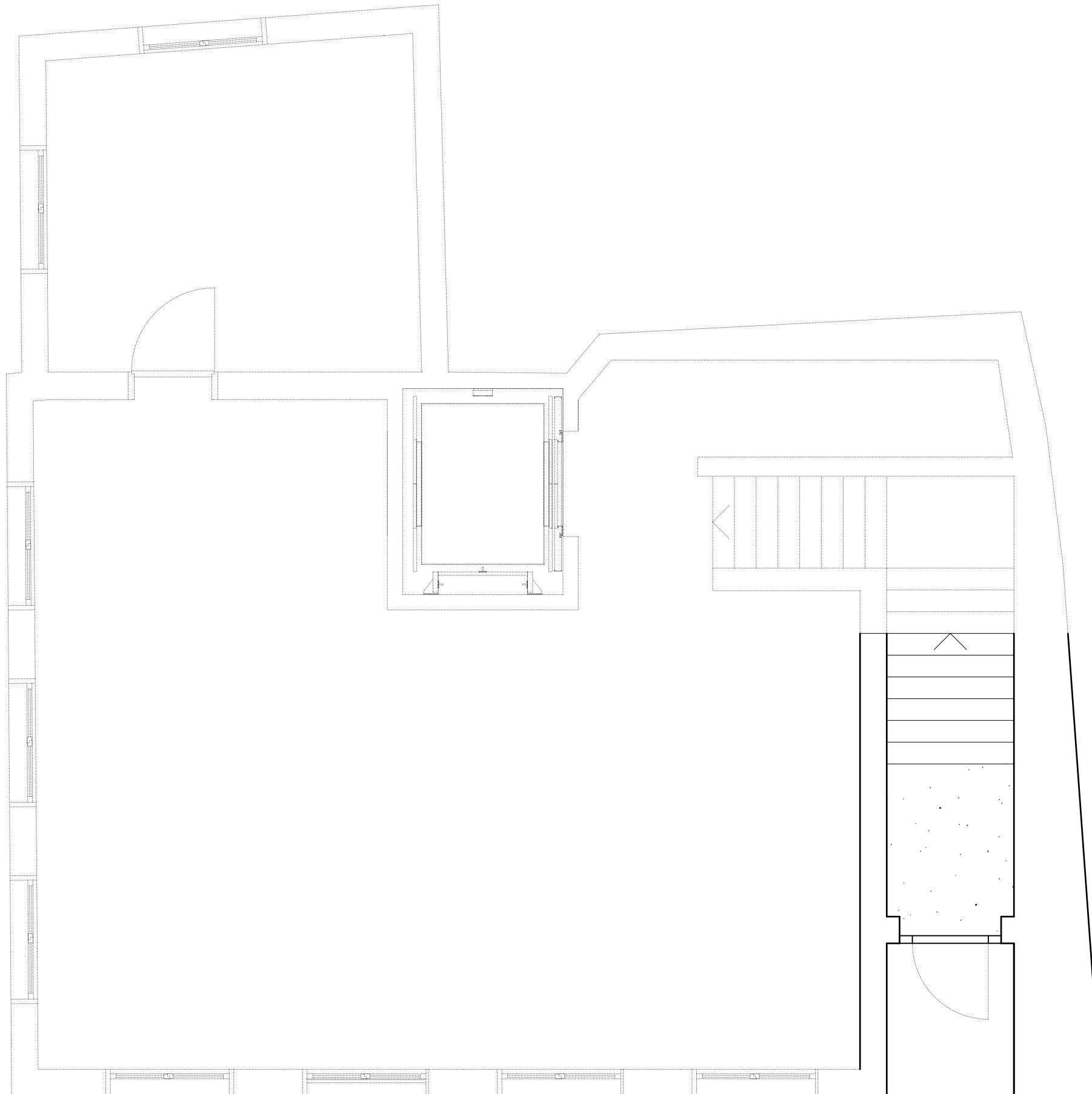
PRIVATE CLIENT PARTNER

76

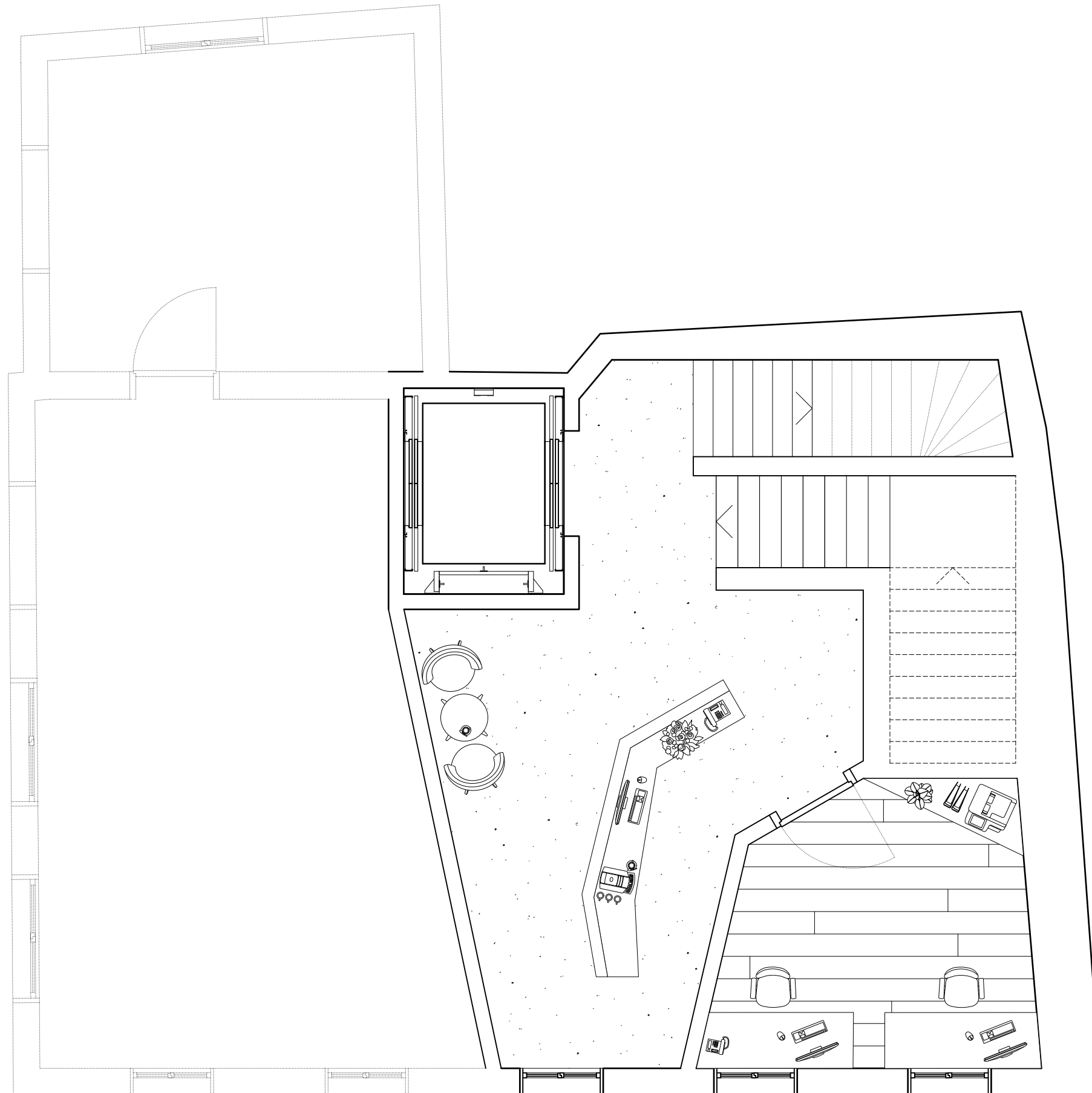




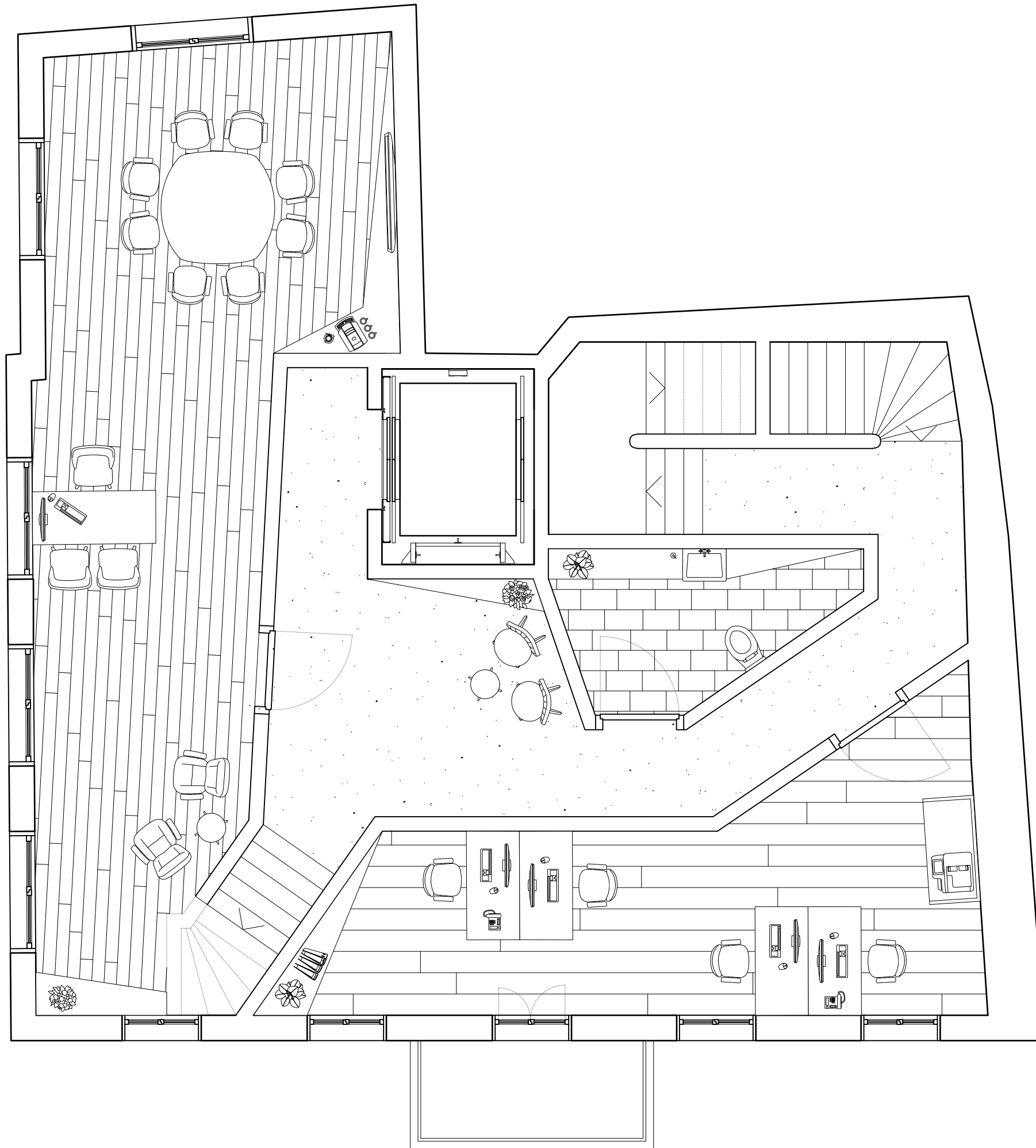




Limmatquai 26, Grundriss, EG

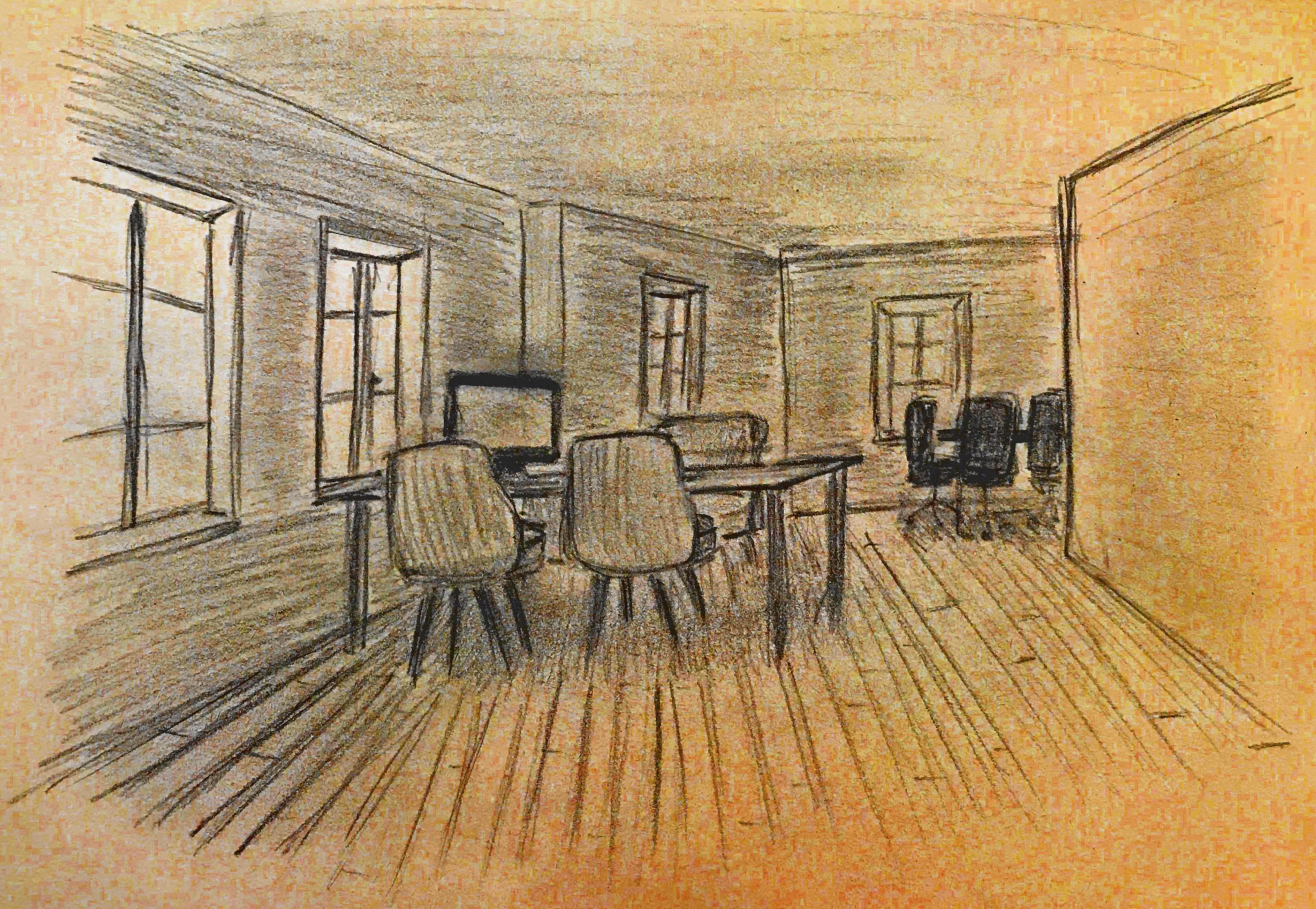


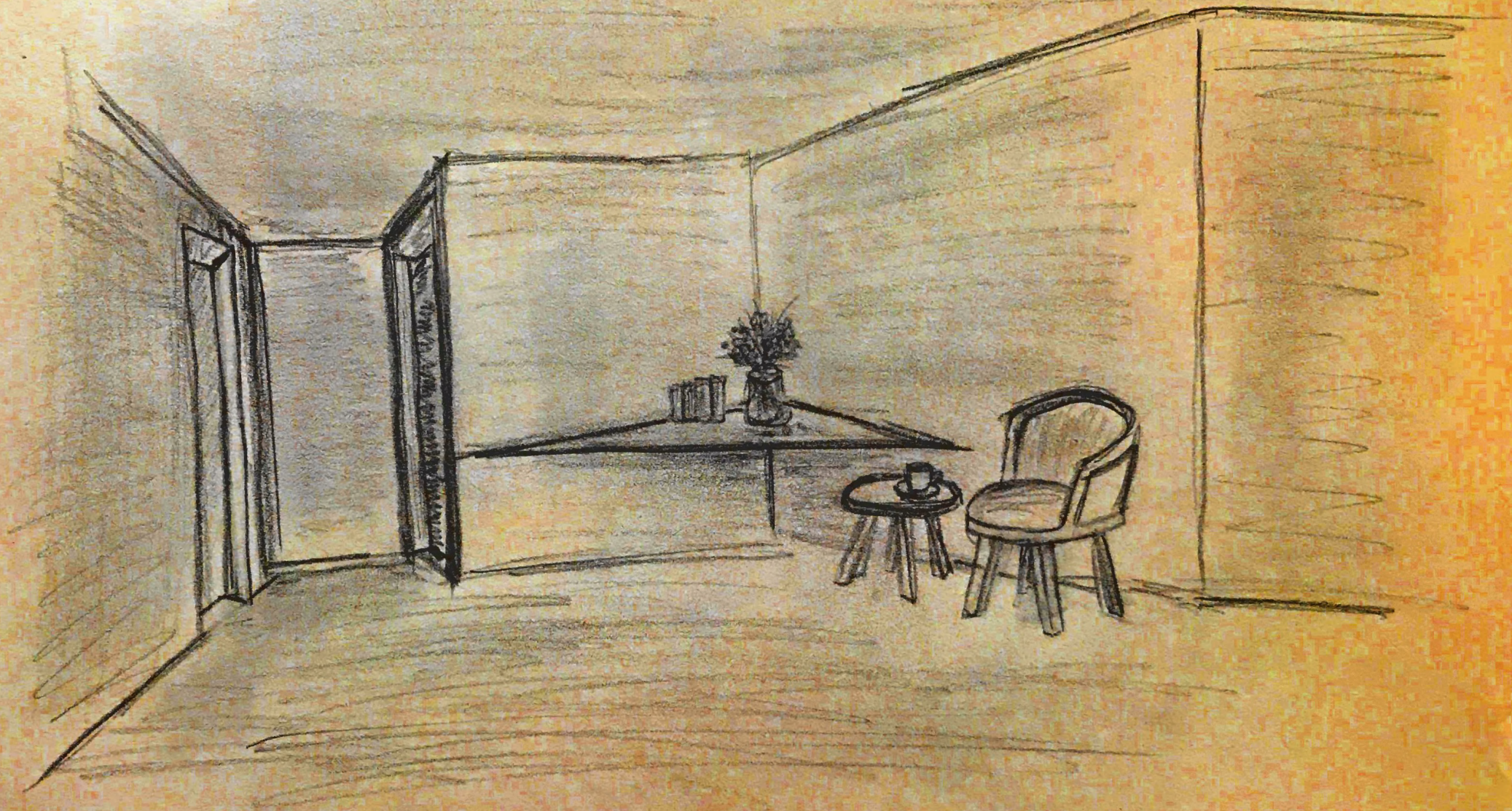
Limmatquai 26, Grundriss, 1.OG

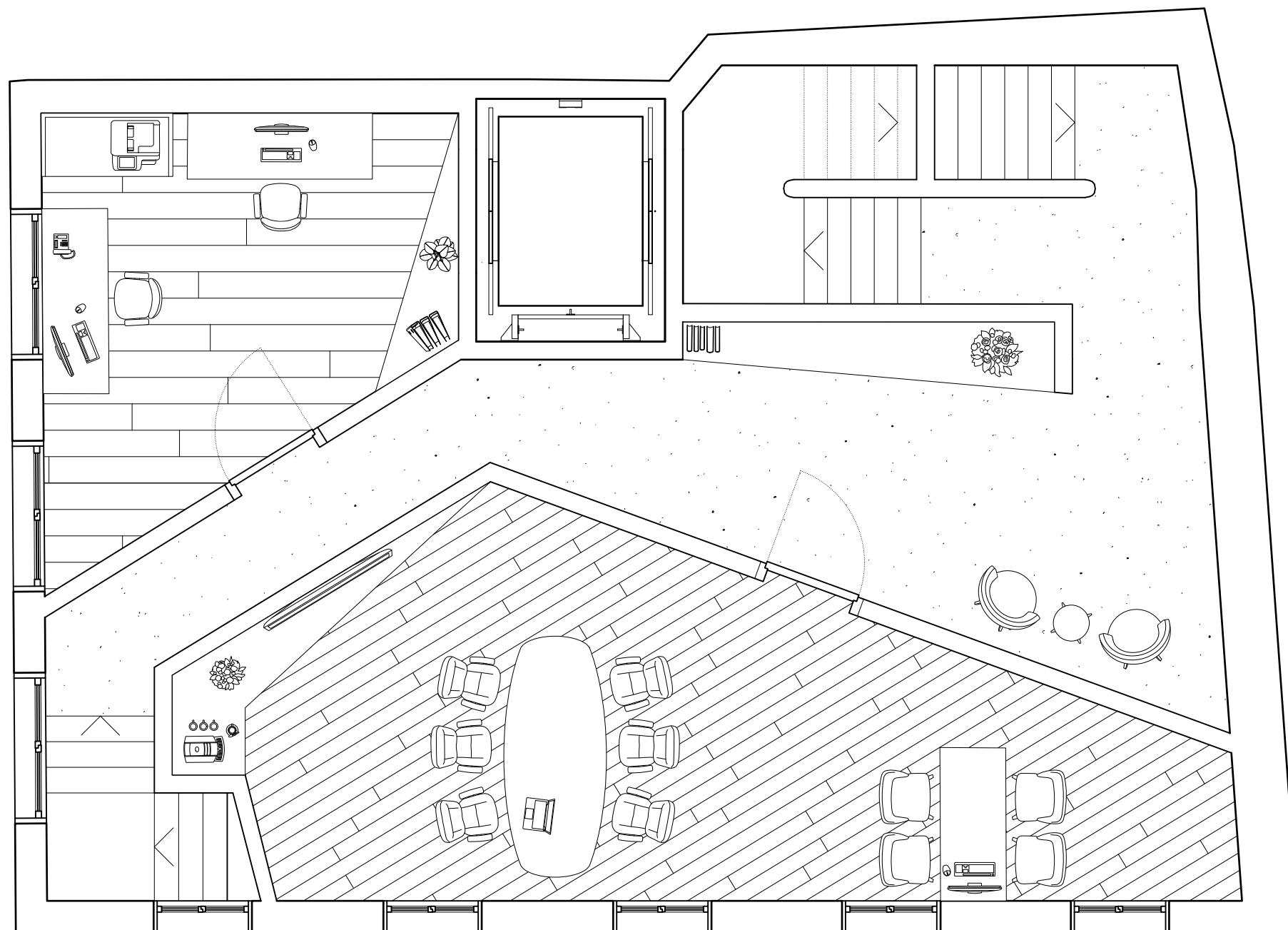


Limmatquai 26, Grundriss, 2.OG

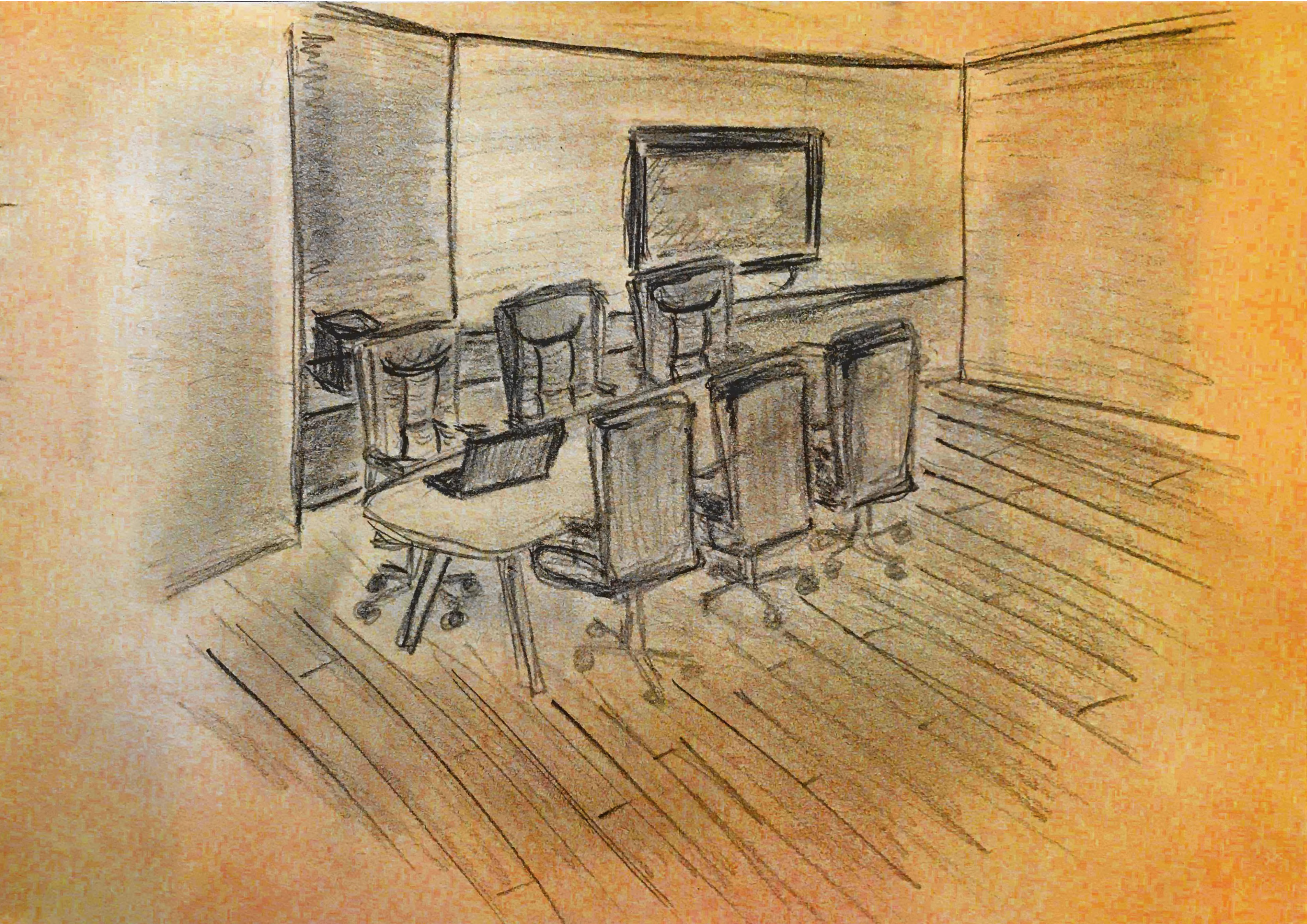


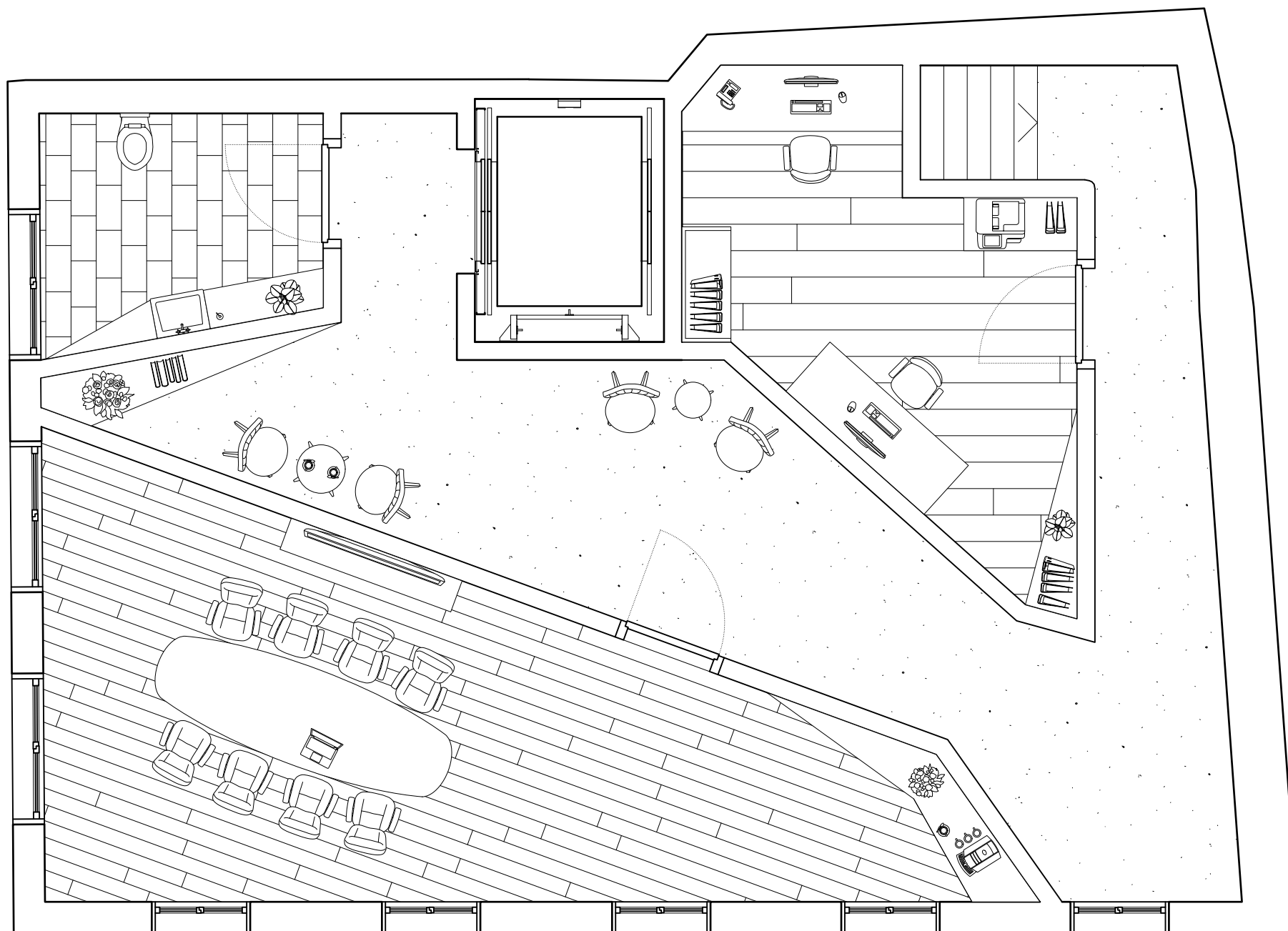




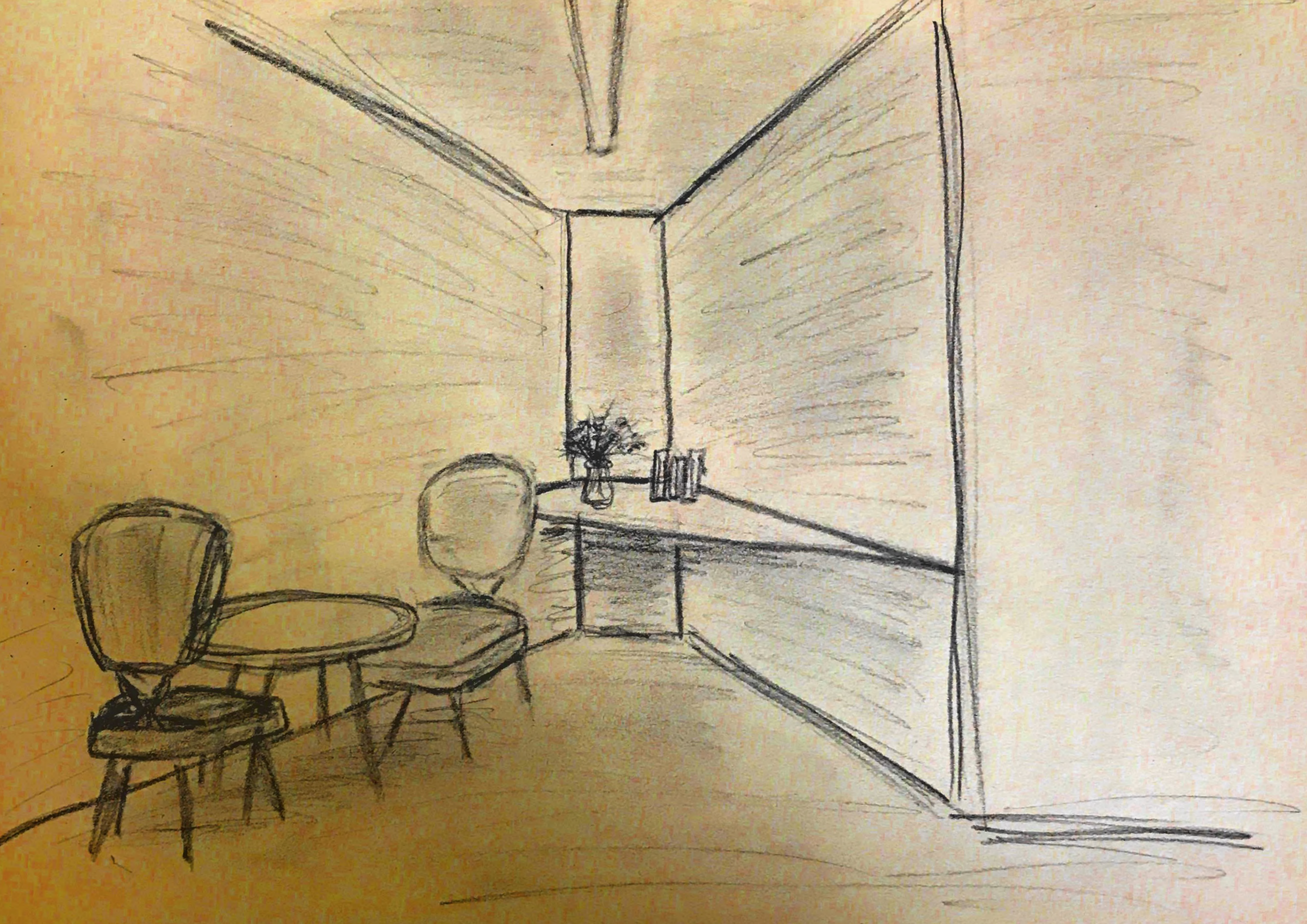







Limmatquai 26, Grundriss, 3.OG

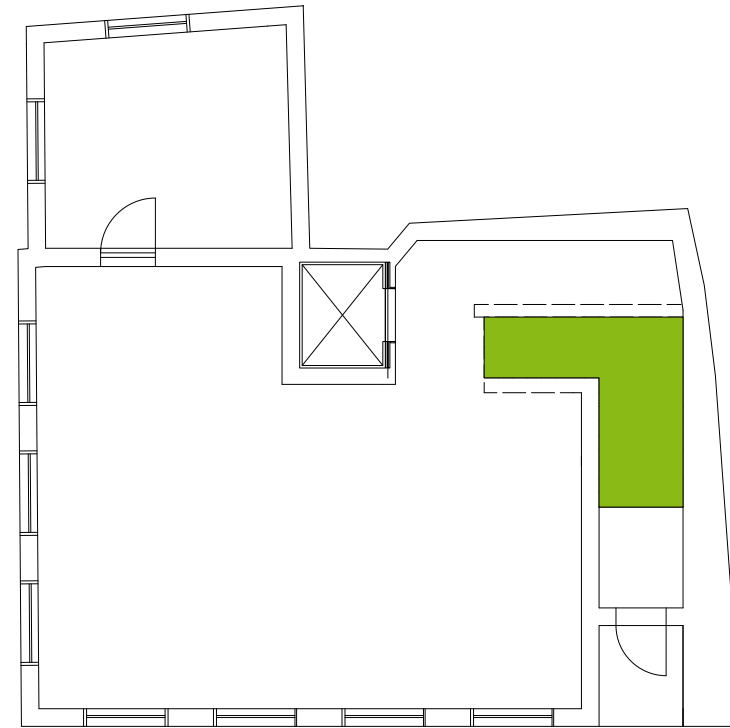




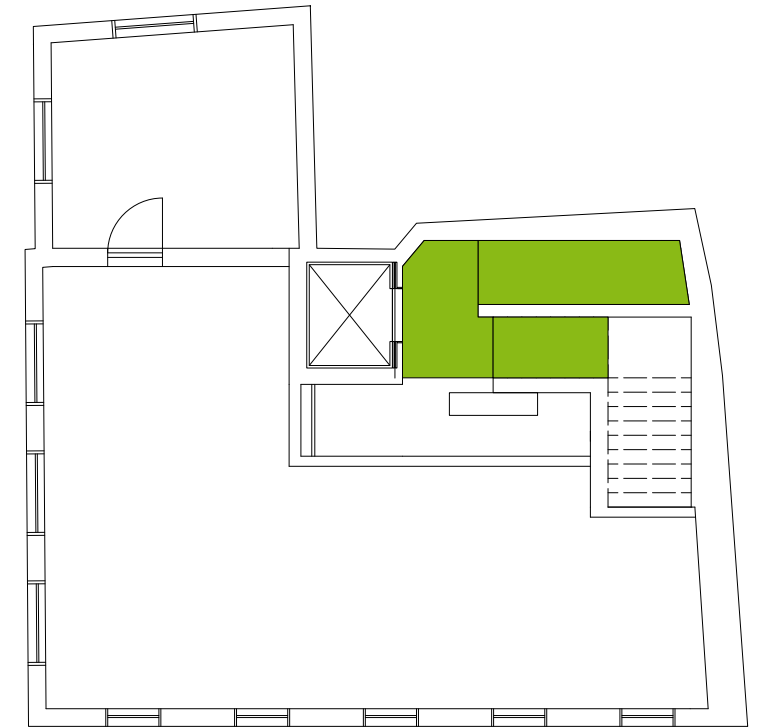
Limmatquai 26, Grundriss, 4.OG



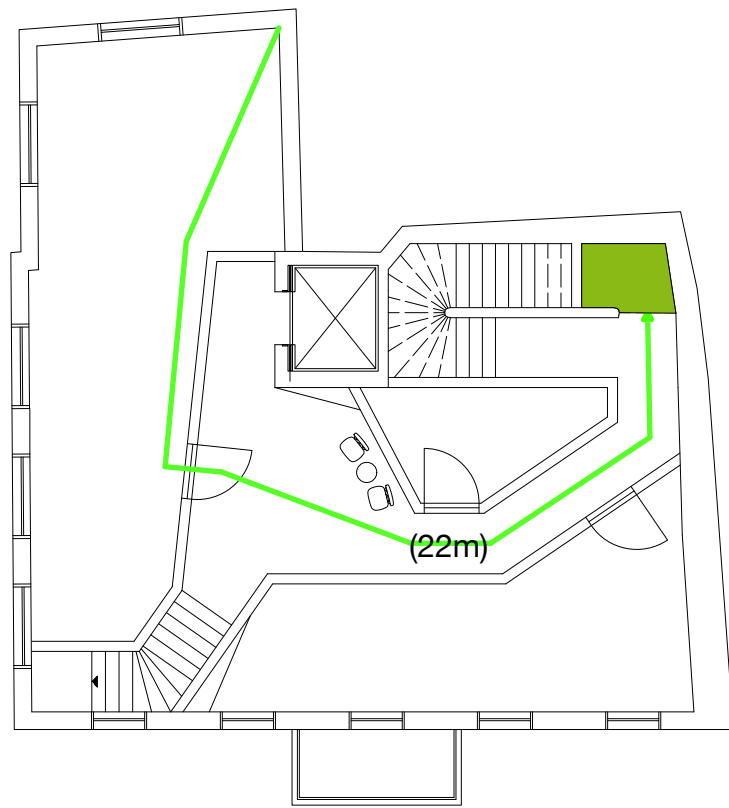
-  Fluchweglänge maximal
-  Fluchweglänge variabel, gültig im dargestellten Beispiel
-  Fluchrichtung, Raumausgang
-  Horizontale Fluchtwege
-  Vertikale Fluchtwege



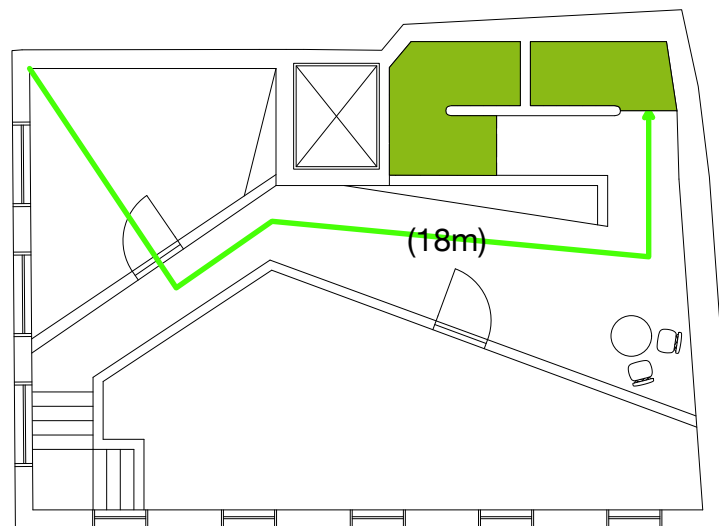
Limmatquai 26, Grundriss, EG



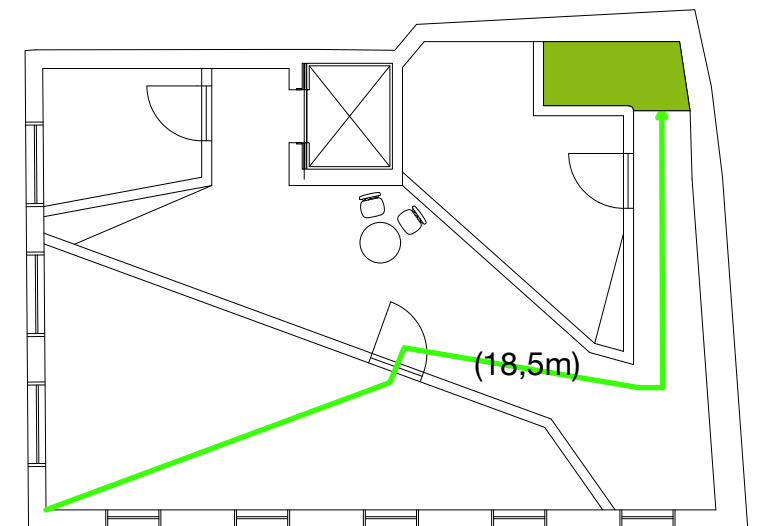
Limmatquai 26, Grundriss, 1.OG



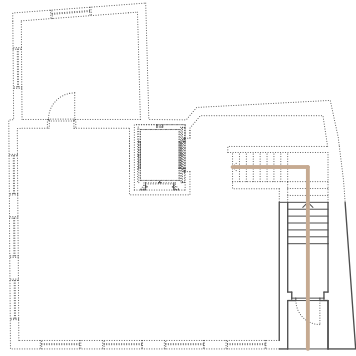
Limmatquai 26, Grundriss, 2.OG



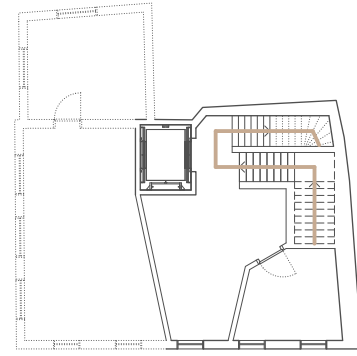
Limmatquai 26, Grundriss, 3.OG



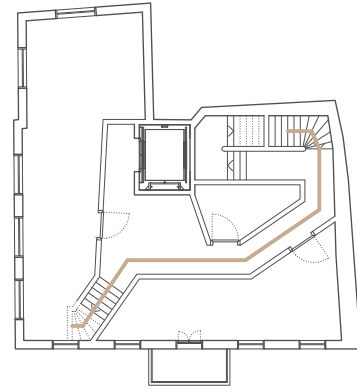
Limmatquai 26, Grundriss, 4.OG



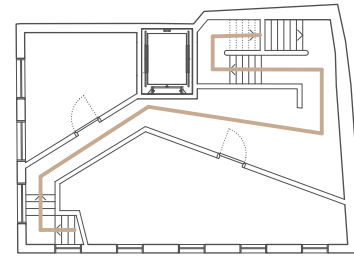
Limmatquai 26, Grundriss, EG



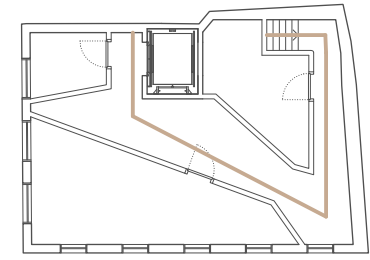
Limmatquai 26, Grundriss, 1.OG



Limmatquai 26, Grundriss, 2.OG



Limmatquai 26, Grundriss, 3.OG



Limmatquai 26, Grundriss, 4.OG

