

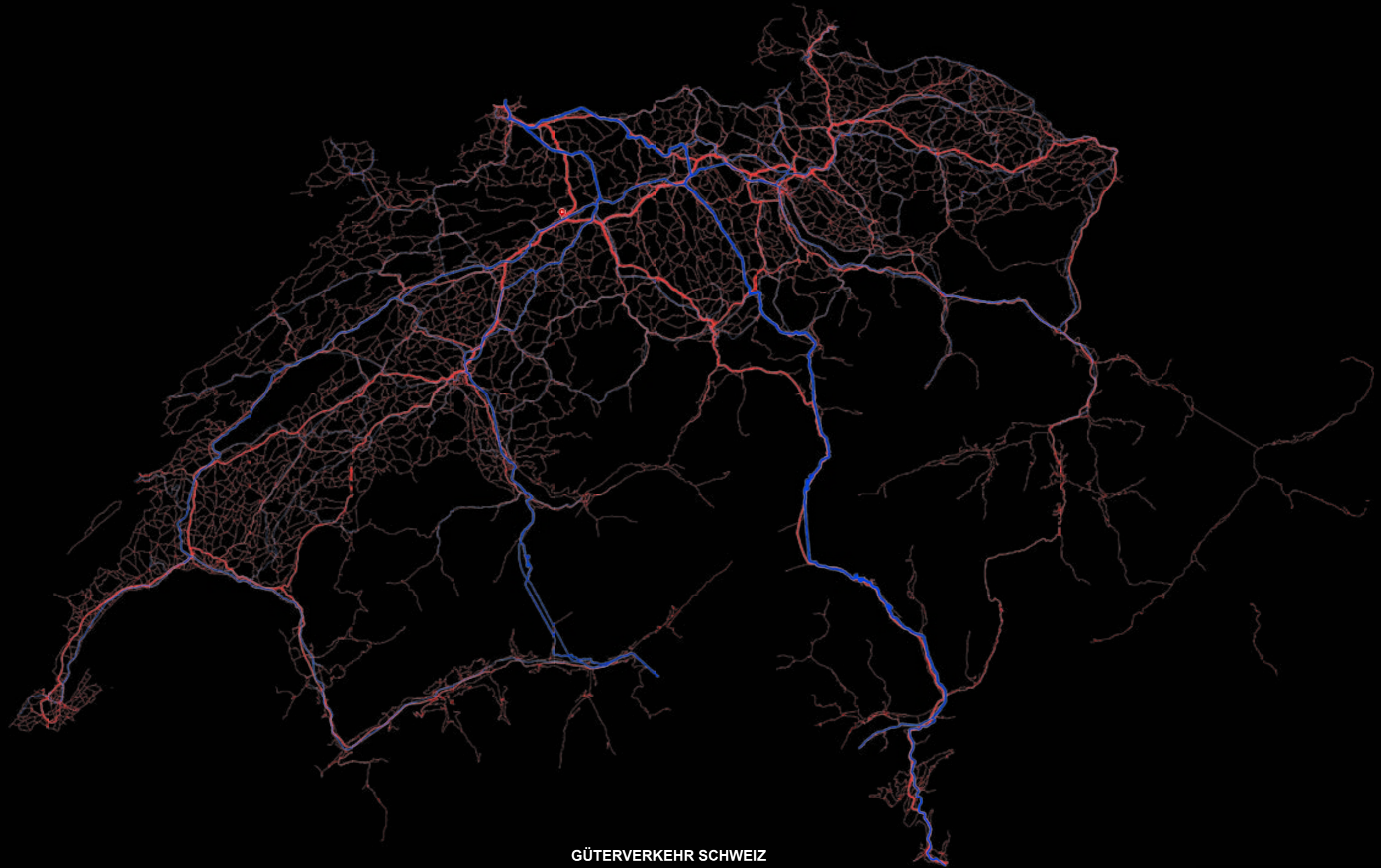


**KV-TERMINAL 35**

HS 20  
PROF. KEREZ  
JANINE ESTELLE HENZ



**ORTHOPHOTO  
SBB BAHNTECHNICKZENTER  
HÄGENDORF**



**GÜTERVERKEHR SCHWEIZ**



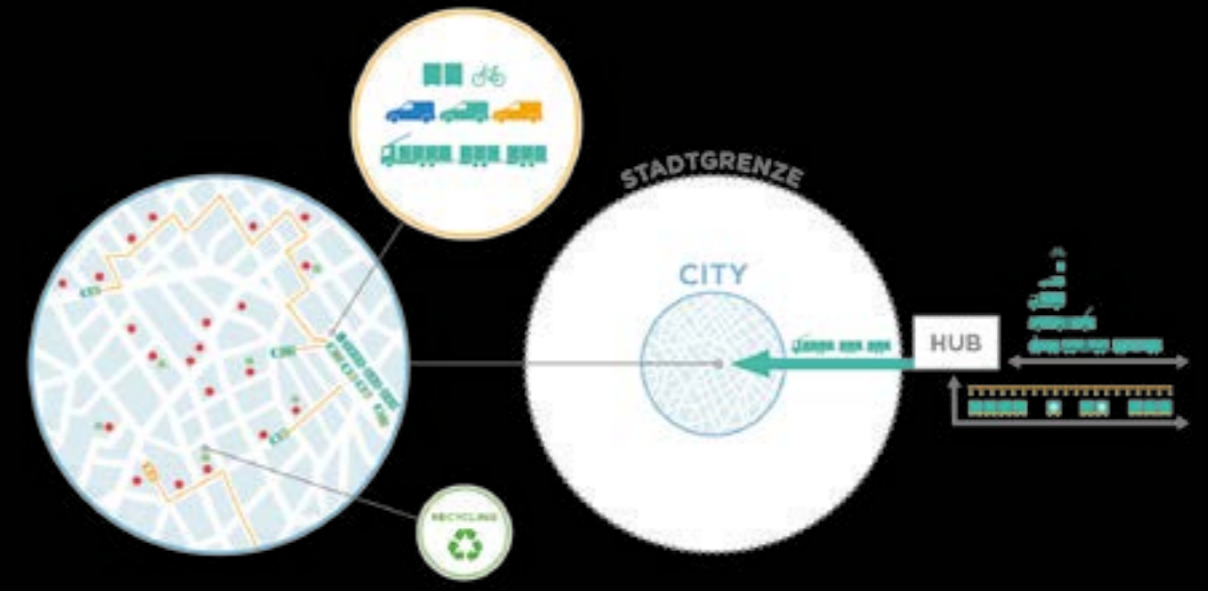
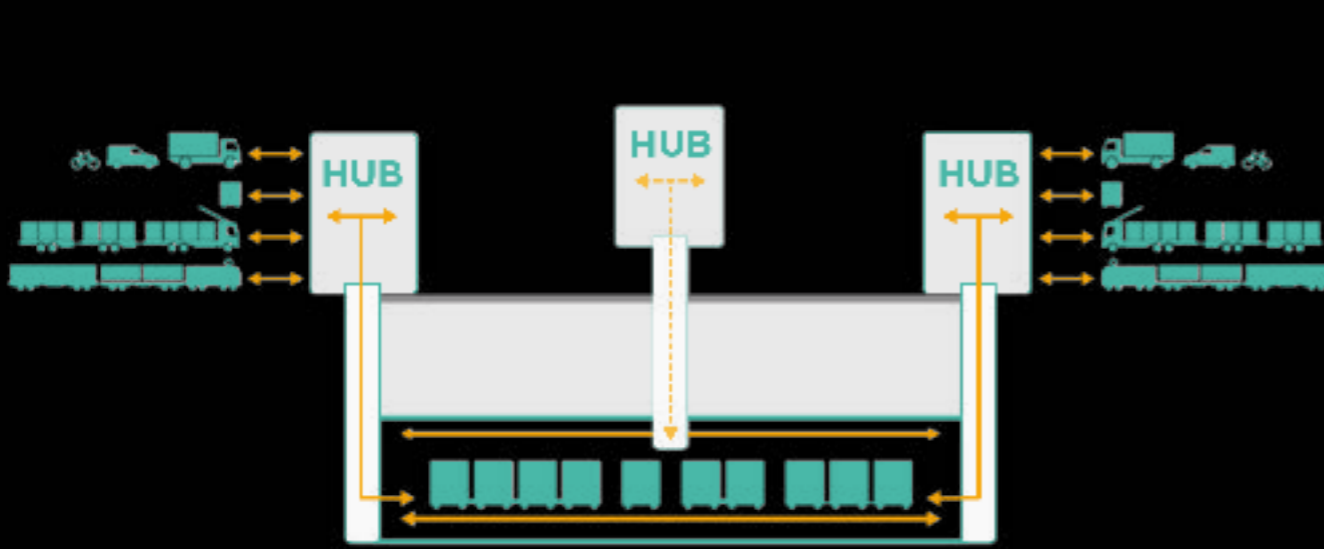
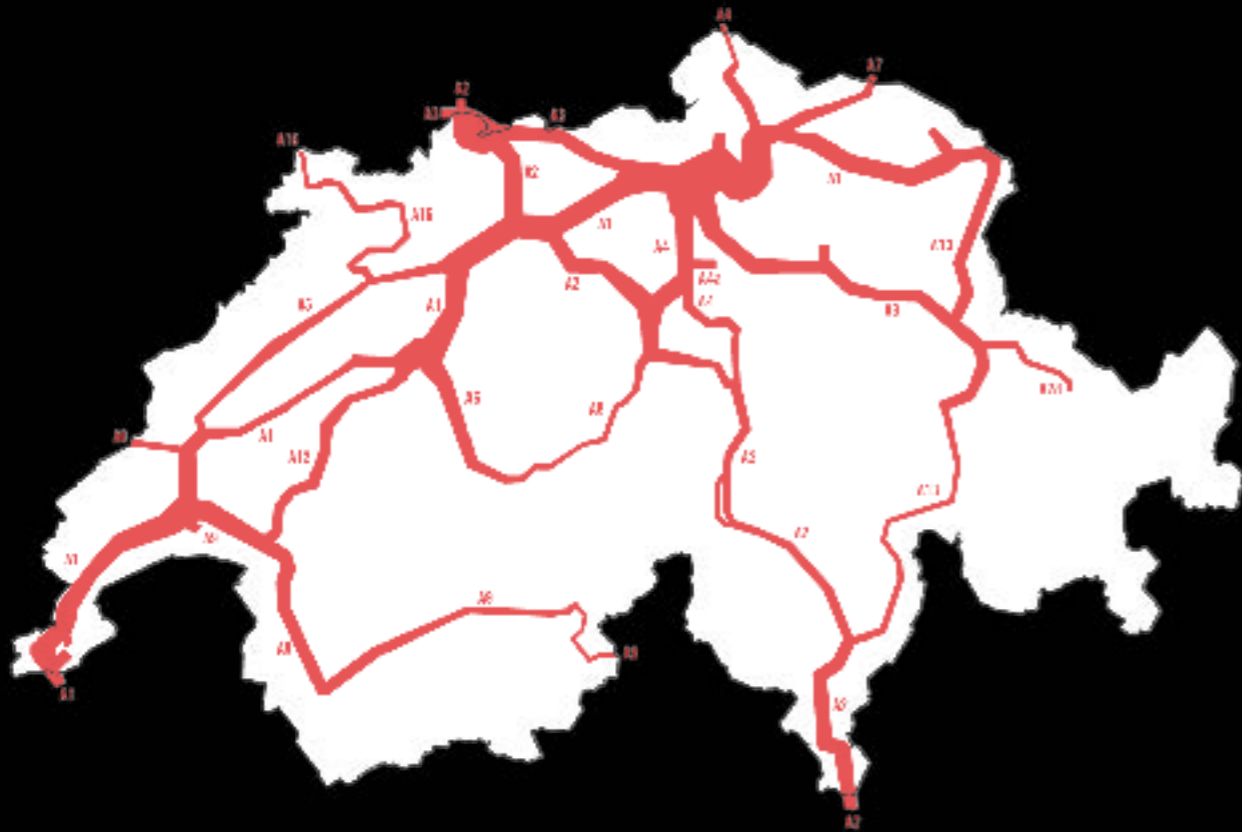
0 2 4 6km  
Massstab 1: 200'000  
Gedruckt am 08.12.2020 19:29 MEZ  
<https://s.geo.admin.ch/8d6ef8ae56>



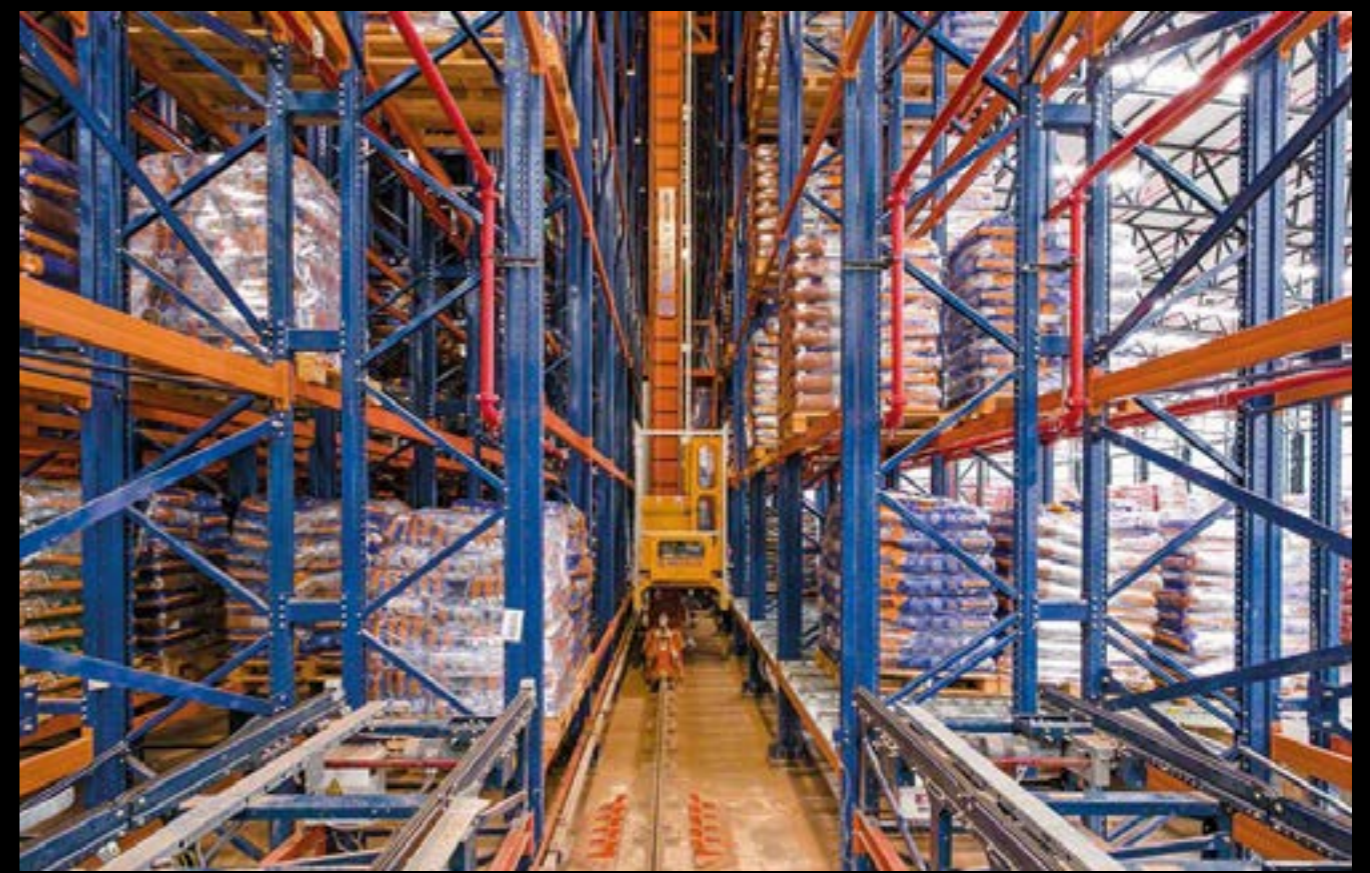
ORTHOPHOTO  
EGERKINGEN GÄU



**KV-TERMINALS SBB  
DIETIKON UND ST.TRIPHONE**

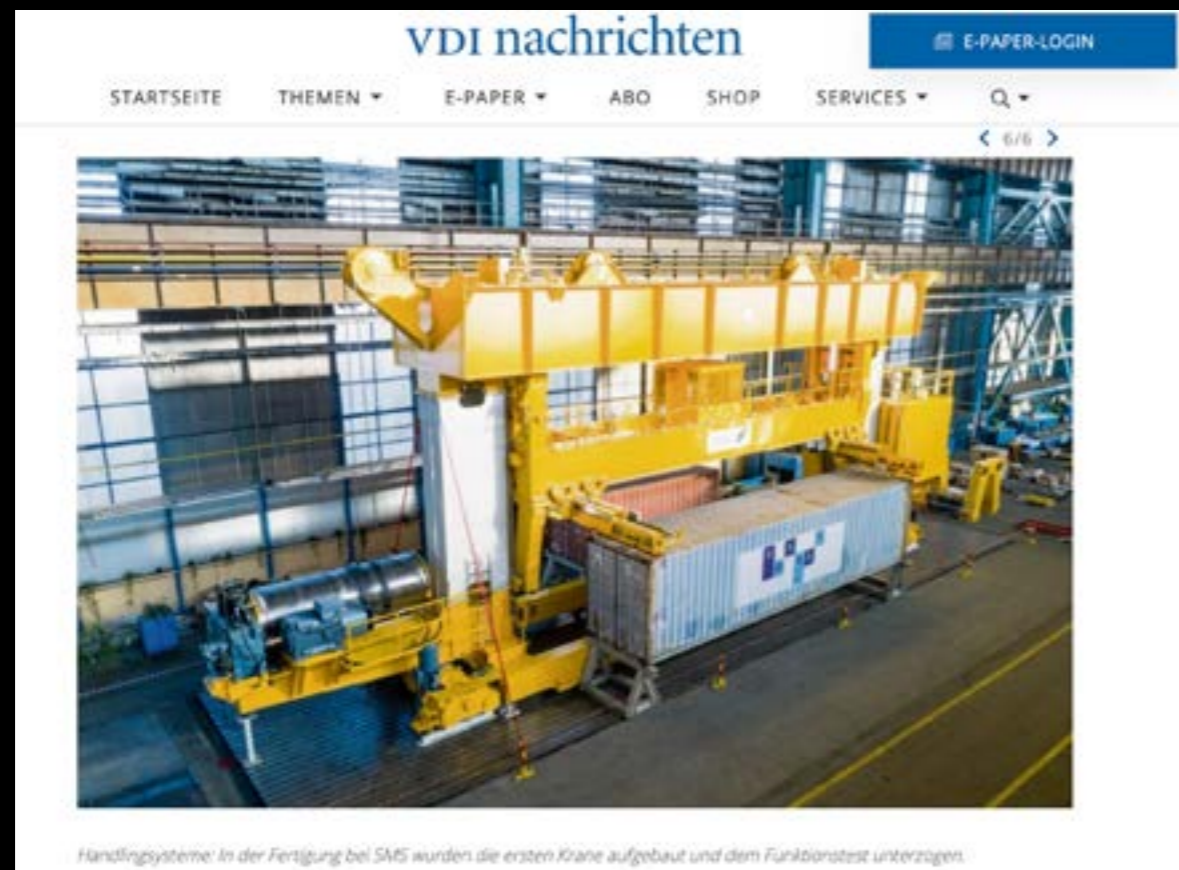


CARGO SOUS TERRAIN KONZEPT



AUSSTATTUNG  
KV-TERMINAL UND HOCHREGALLAGER





## E-MOBILITY FÜR CONTAINER-LOGISTIK

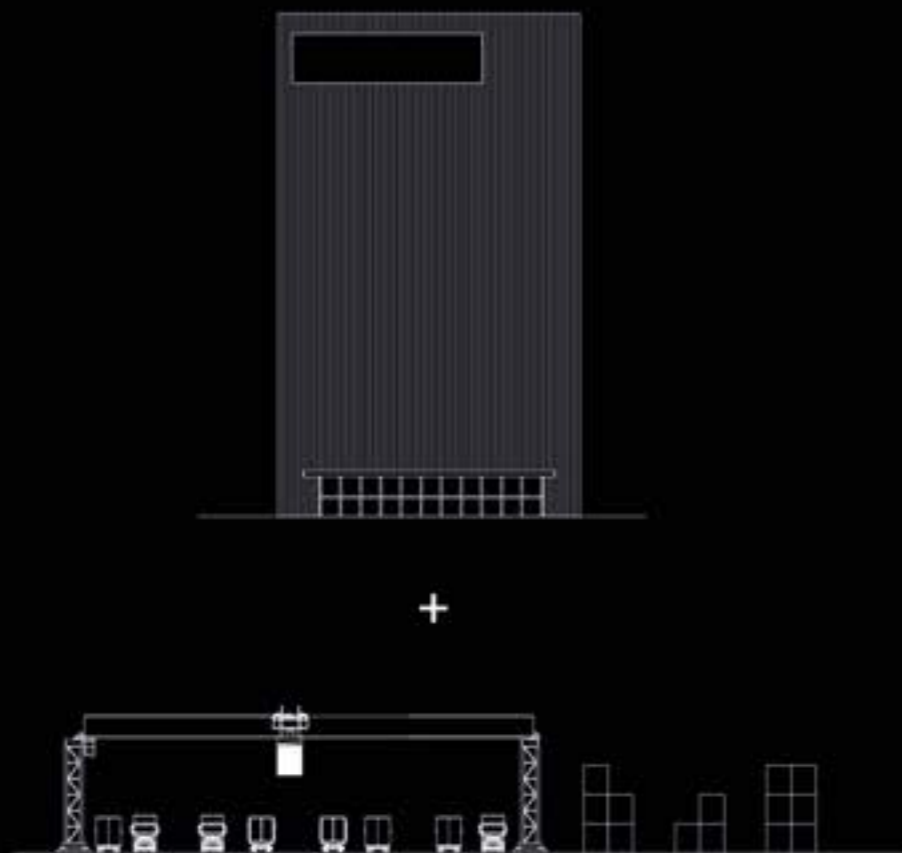


Auf dem HHLA Container Terminal Altenwerder (CTA) kommen erstmals batteriebetriebene und damit abgasfreie fahrerlose Containertransporter zum Einsatz. Zum schnellen und regelmäßigen Austausch der bis zu zwölf Tonnen schweren Batterieträger liefert Vollert Anlagenbau eine vollautomatisierte Batteriewechselstation, die in enger Zusammenarbeit mit der Gottwald Port Technology GmbH entwickelt wurde.

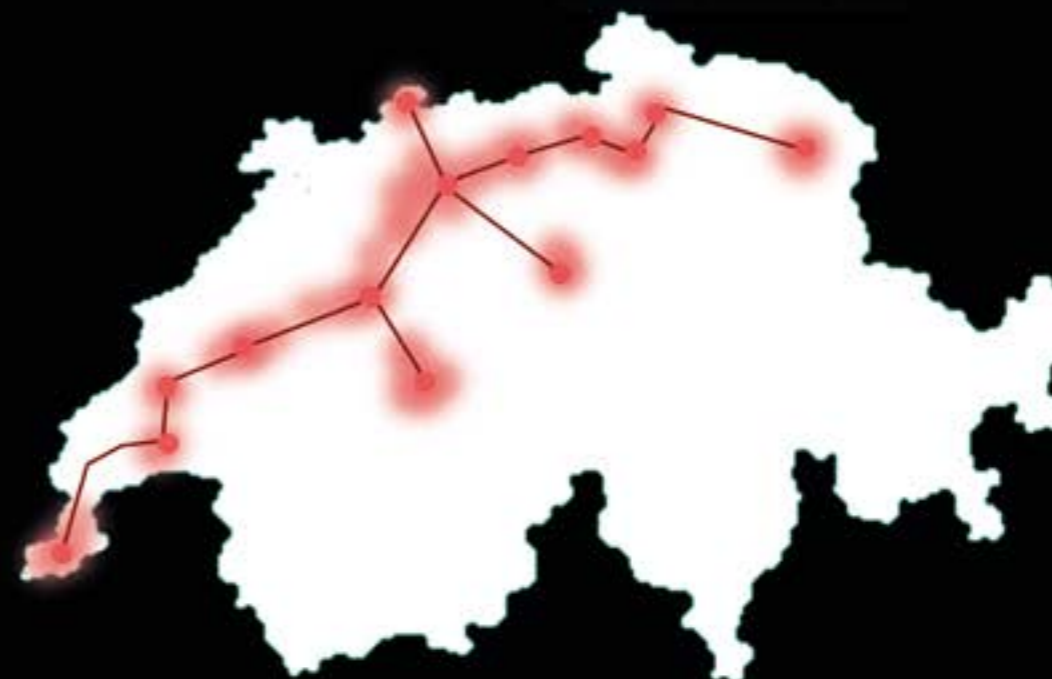
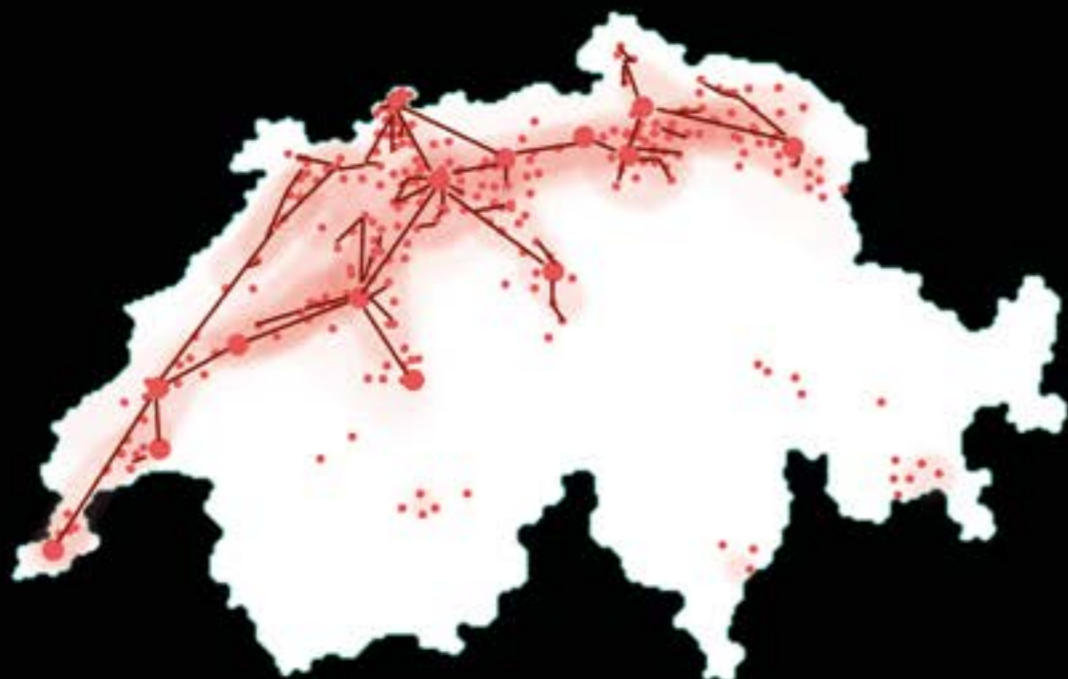
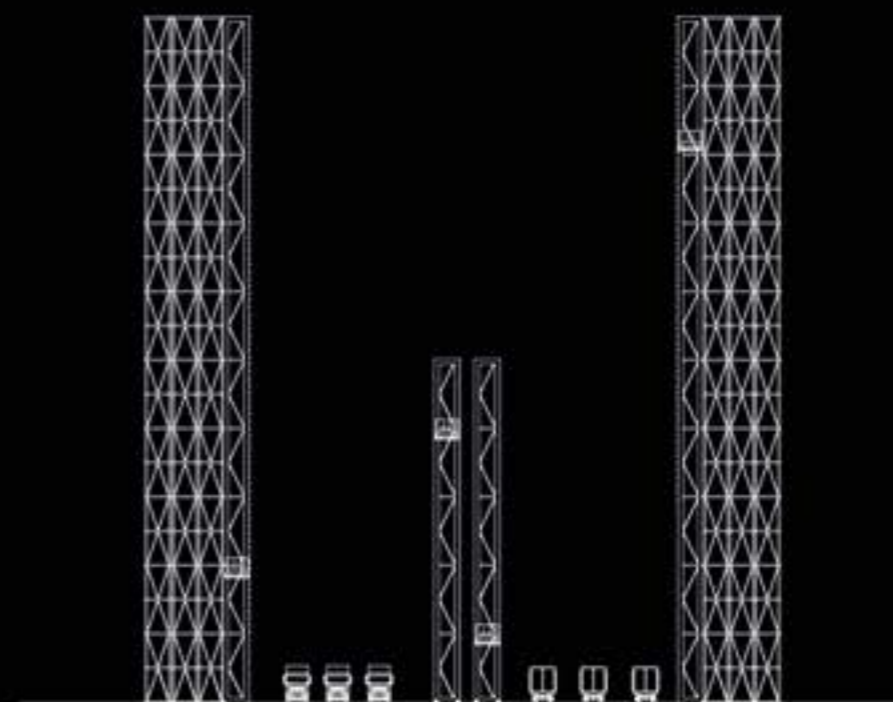


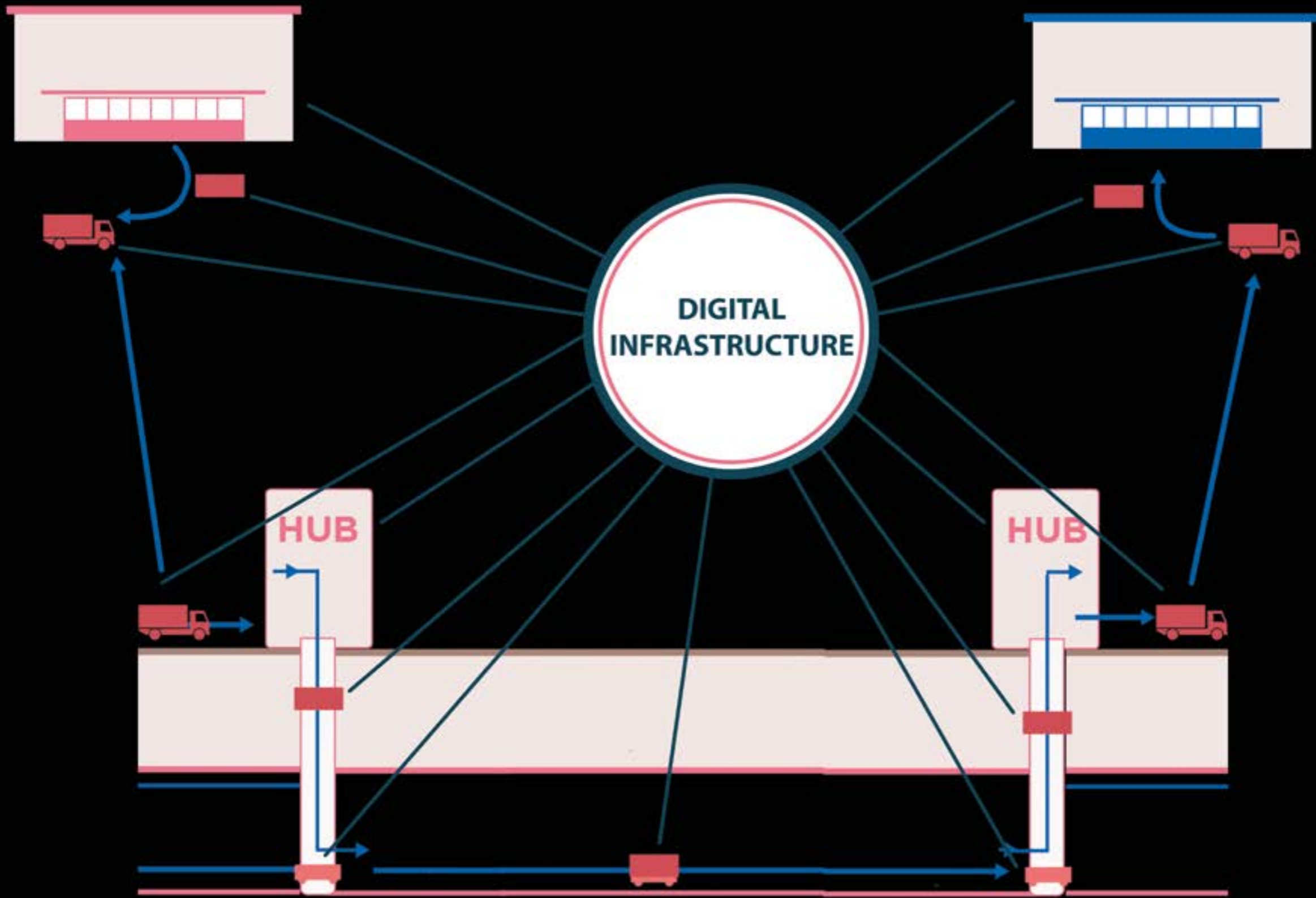
### AUSSTATTUNG KV-TERMINAL UND HOCHREGALLAGER DER ZUKUNFT

2020



2035

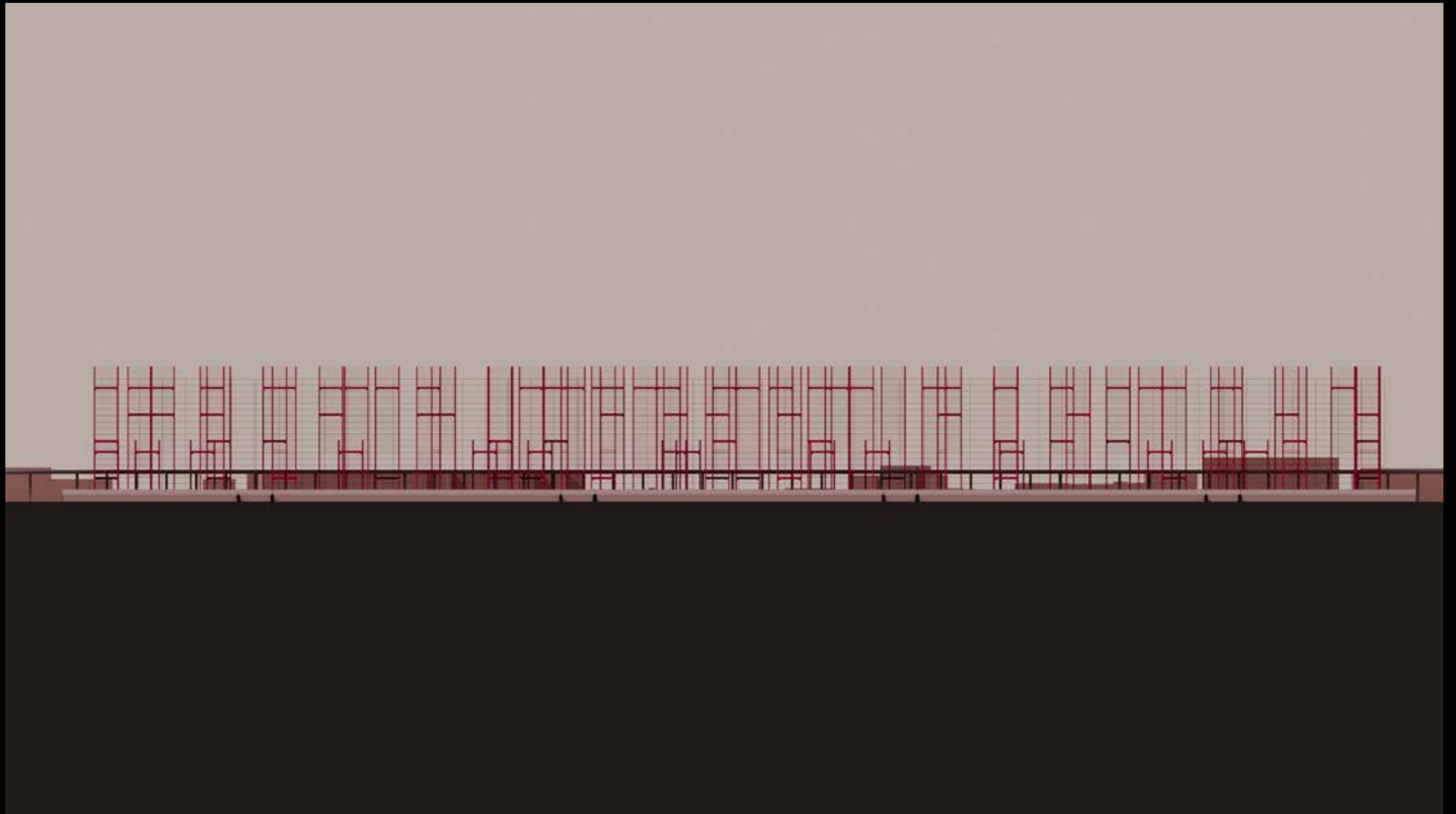




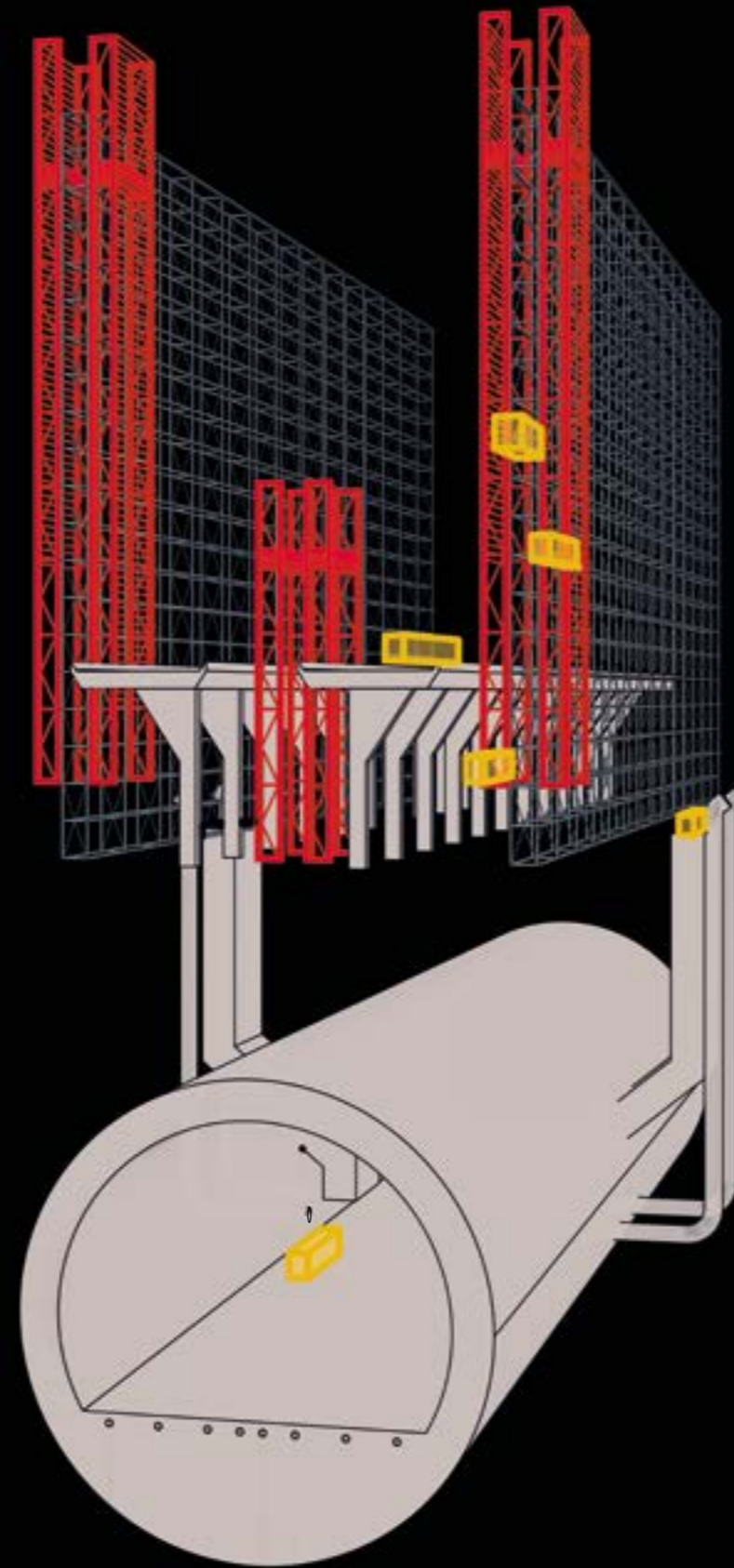
SYSTEM ABLAUF



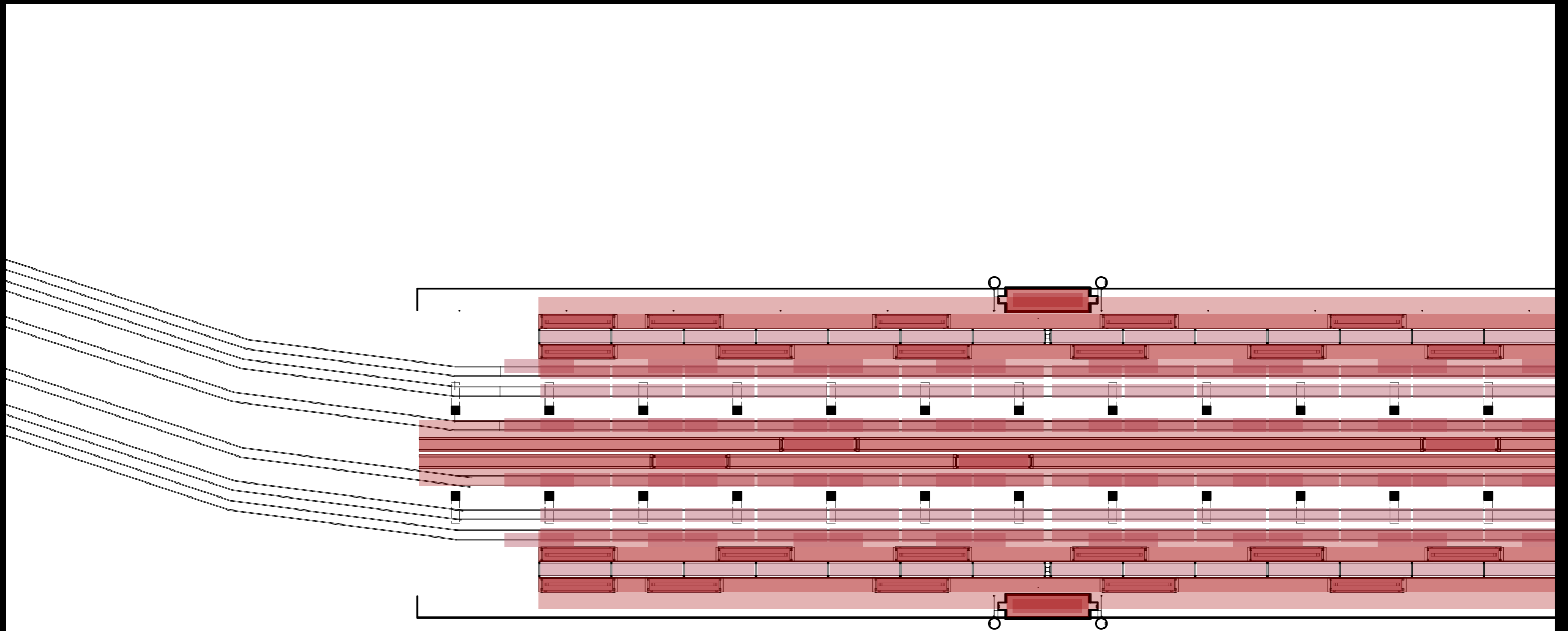
LAGEPLAN



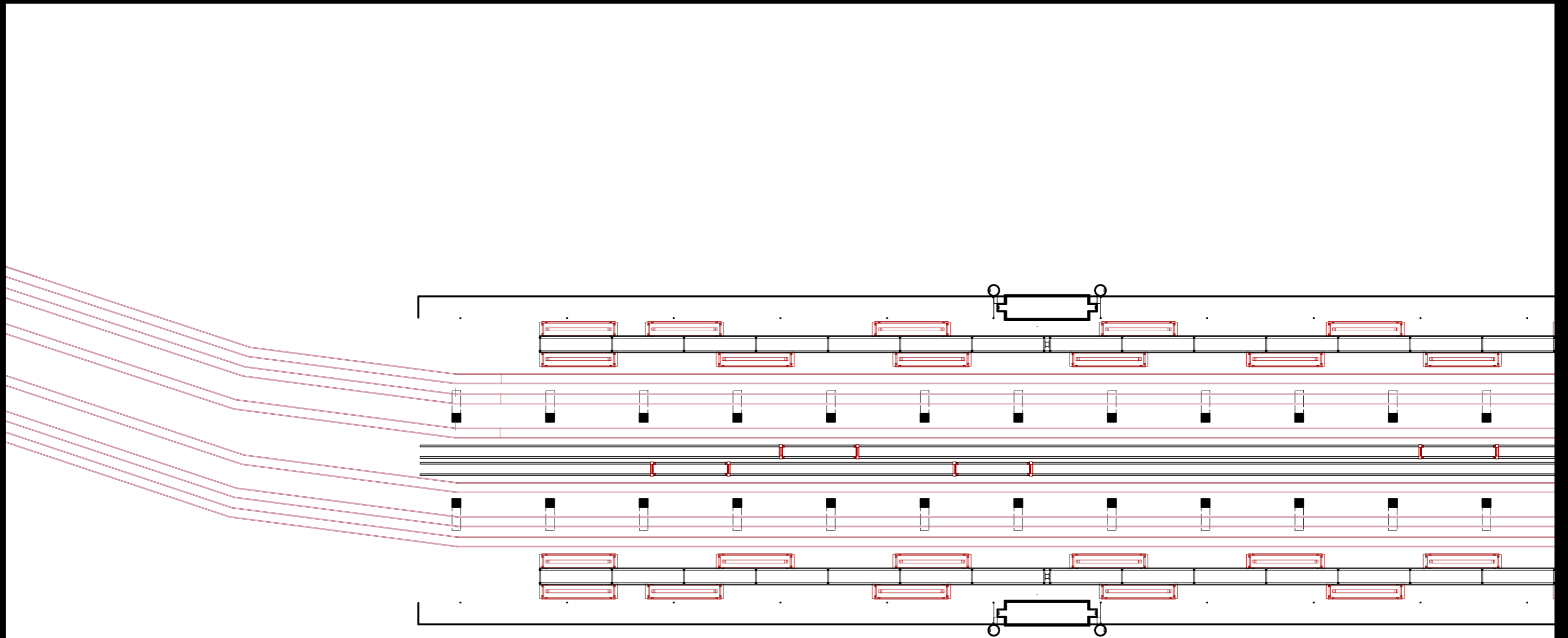
ANSICHT



CONTAINERFLUSS

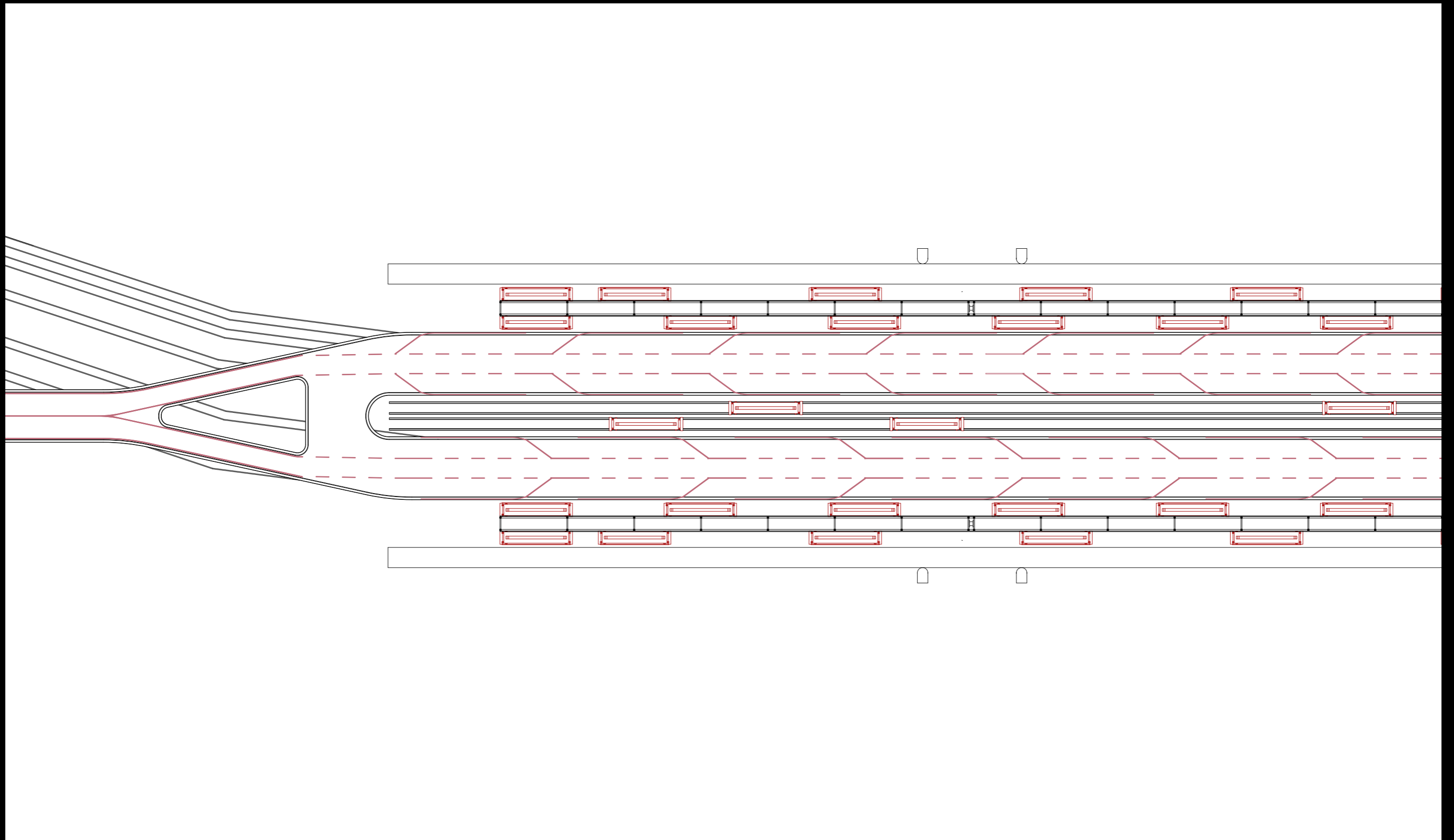


BEWEGUNGSFLUSS

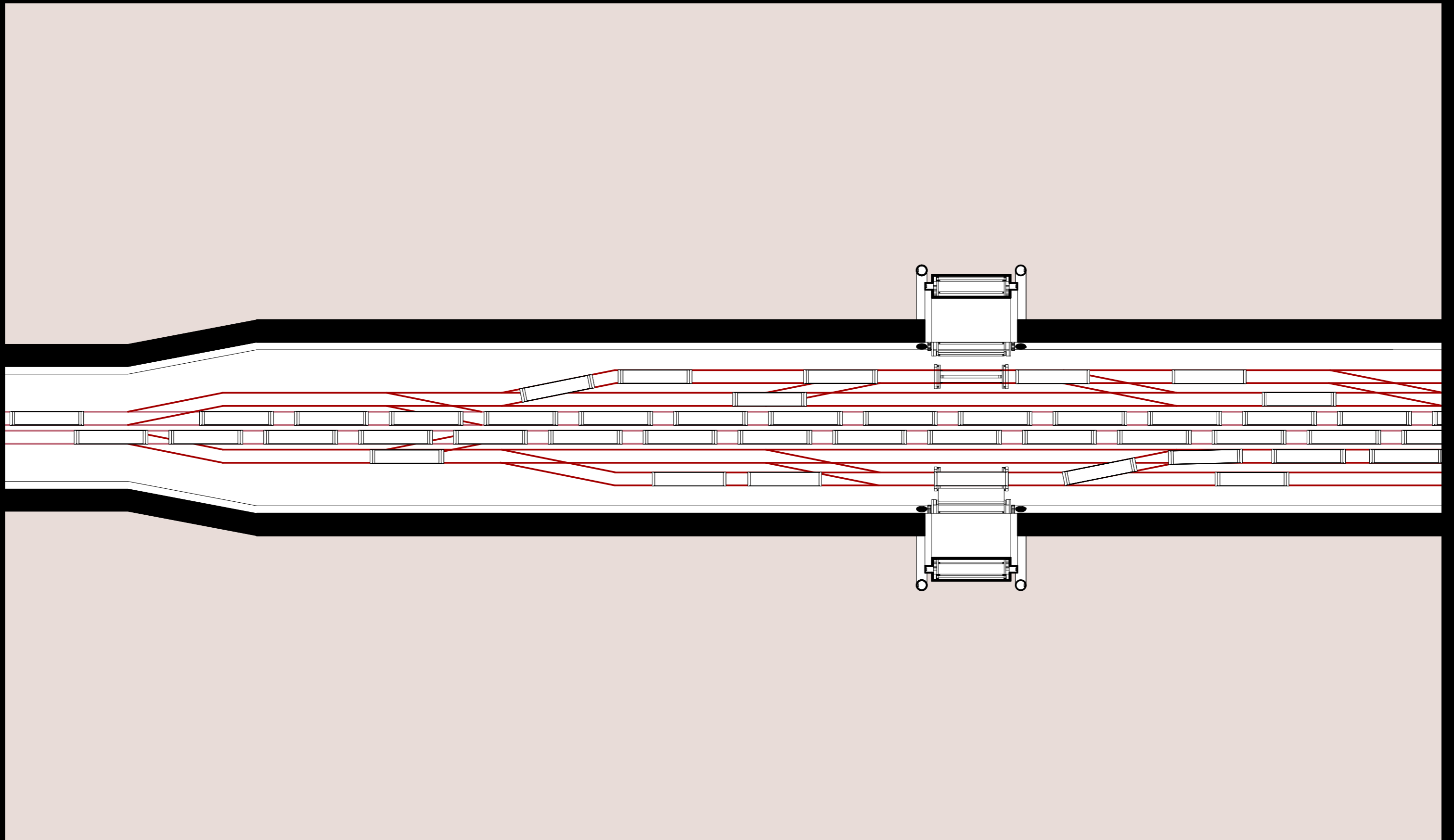


GRUNDRISS  
EG

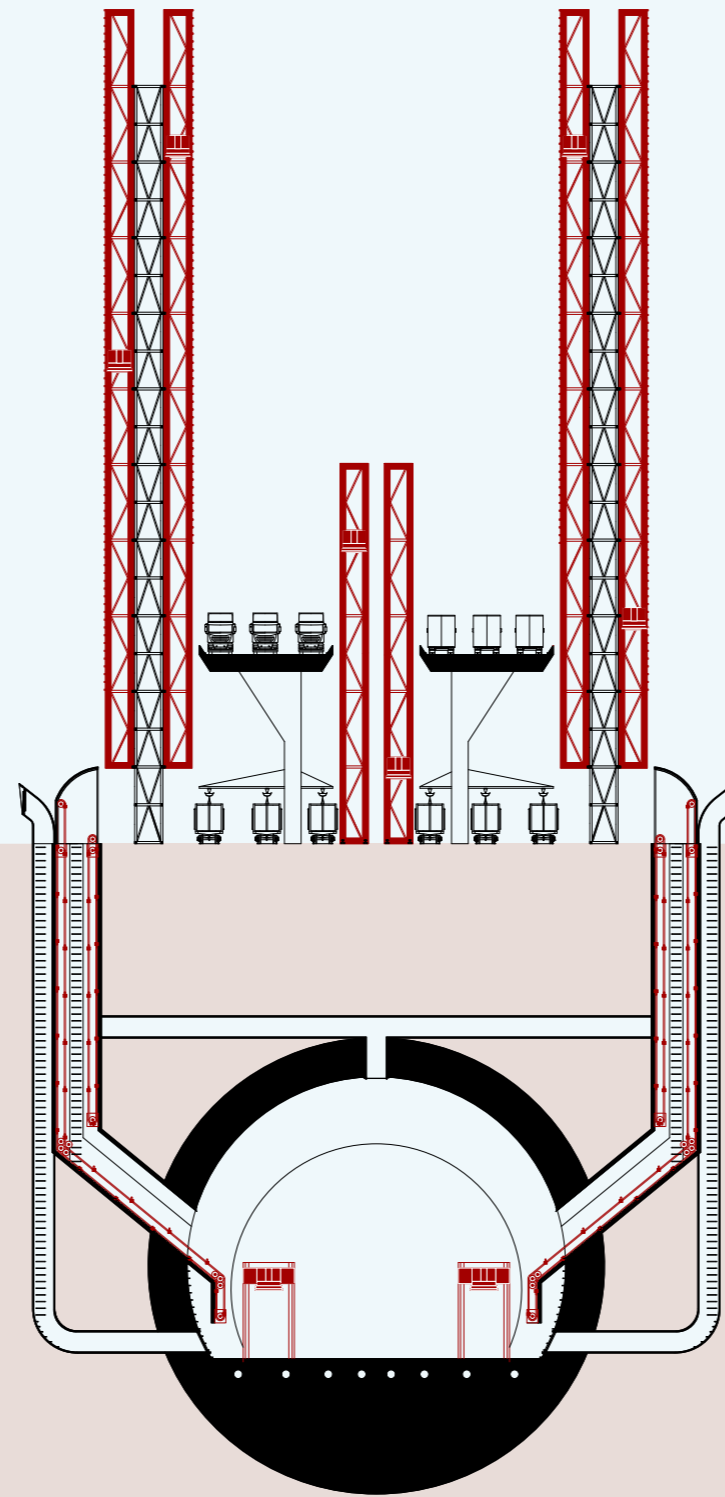




GRUNDRISS  
OG



GRUNDRISS  
UG



SCHNITT  
NORD-SÜD



